

# Service Manual

2-LINE Corded/Cordless Phone with Link-to-Cell

Model No. **KX-TG9581**  
**KX-TG9582**

B: Black Version

*Supplement*

Please file and use this manual together with the service manual for Model No. KX-TG9581B, KX-TG9582B and KX-TGA950B, Order No. KM41409856CE.

## **WARNING**

This service information is designed for experienced repair technicians only and is not designed for use by the general public. It does not contain warnings or cautions to advise non-technical individuals of potential dangers in attempting to service a product. Products powered by electricity should be serviced or repaired only by experienced professional technicians. Any attempt to service or repair the product or products dealt with in this service information by anyone else could result in serious injury or death.

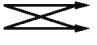
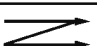
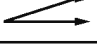
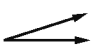
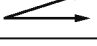
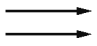
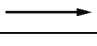
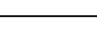
**Panasonic**<sup>®</sup>

© Panasonic Corporation 2017  
Unauthorized copying and distribution is a violation  
of law.

# 1 REPLACEMENT PARTS LIST

## 1.1. REFERENCE CHART

Reason for Change	
*The following items (1-8) indicate the reason for change. See the "Notes" column for each part in <b>ORIGINAL AND NEW PARTS COMPARISON LISTS.</b>	
1. Improve performance	<b>Remarks:</b> *c : To share the parts with other models
2. Change of material or dimension	
3. To meet approved specification	
4. Standardization	
5. Addition	
6. Deletion	
7. Correction	
8. Other	

Interchangeability Code		
**The following items (V-Z) indicate the Interchangeability. See the "Notes" column for each part in <b>ORIGINAL AND NEW PARTS COMPARISON LISTS.</b>		
V	Original  Early (before change) New  Late (after change)	Original or new parts may be used in early or late production sets. Use original parts until exhausted, then stock new parts.
W	Original  Early (before change) New  Late (after change)	Original parts may be used in early production sets only. New parts may be used in early or late production sets. Use original parts where possible, then stock new parts.
X	Original  Early (before change) New  Late (after change)	New parts only may be used in early or late production sets. Stock new parts.
Y	Original  Early (before change) New  Late (after change)	Original parts may be used in early production sets only. New parts may be used in late production sets only. Stock both original and new parts.
Z	Other	

**Note:**

Alphabets in the "Remarks" column in the following lists correspond to the alphabets in the "Remarks" in REFERENCE CHART.

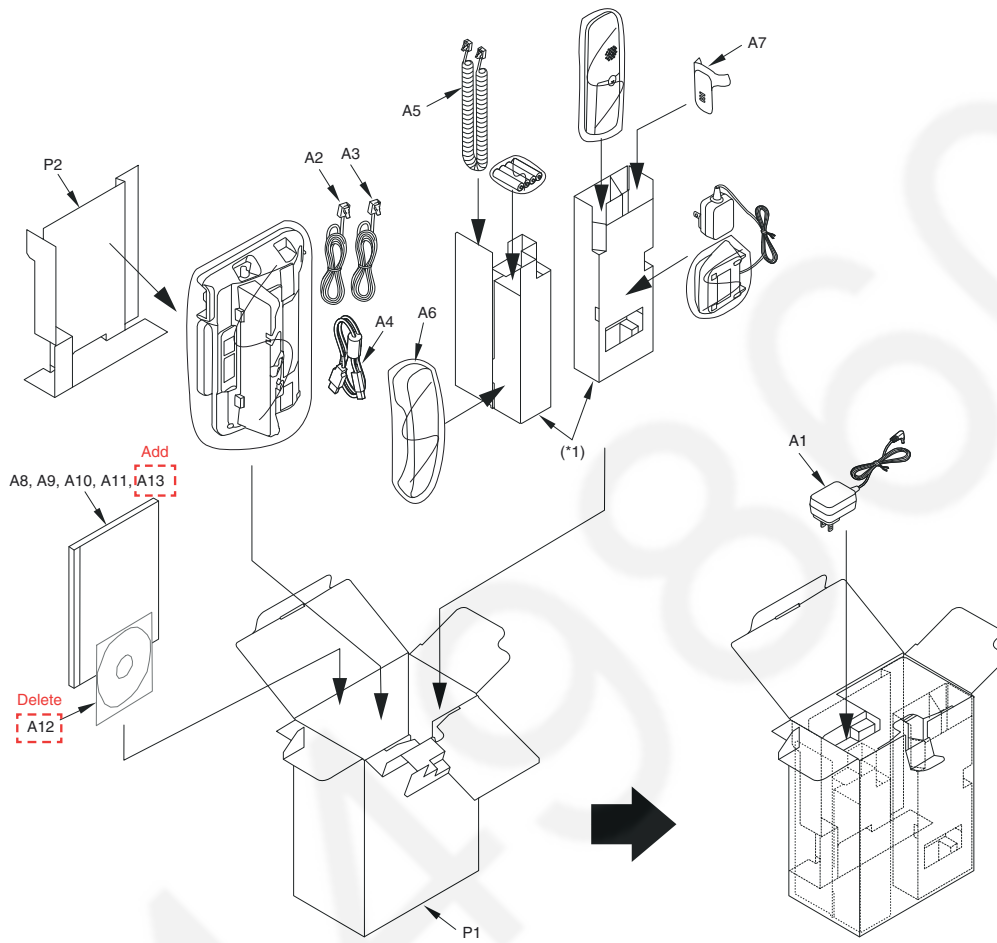
## 1.2. ORIGINAL AND NEW PARTS COMPARISON LISTS

Ref. No.	Part No.		Part Name & Description	Pcs/ Set	Remarks	Notes	Time of Change (Suffix)
	Original (Old)	New					
<b>Accessories and Packing Materials</b>							
A11, A111	PNQW3883Z	PNQW3883X	LEAFLET, QUICK GUIDE	1	*c	4 Y	B to C
A13, A113	--	PNQW5109Z	LEAFLET, TELEPHONE PLUG-IN WEB	1	*c	4 Y	B to C
A8, A108	PNQX6371Z	PNQX6371W	INSTRUCTION BOOK	1	*c	4 Y	B to C
A12, A112	PNJX1051Z	--	CD-ROM	1	*c	4 Y	B to C
P1	PNPK3867001Z	PNPK3867001Y	GIFT BOX (for KX-TG9581B)	1	*c	4 Y	B to C
P101	PNPK3868001Z	PNPK3868001X	GIFT BOX (for KX-TG9582B)	1	*c	4 Y	B to C

## 2 CHANGES

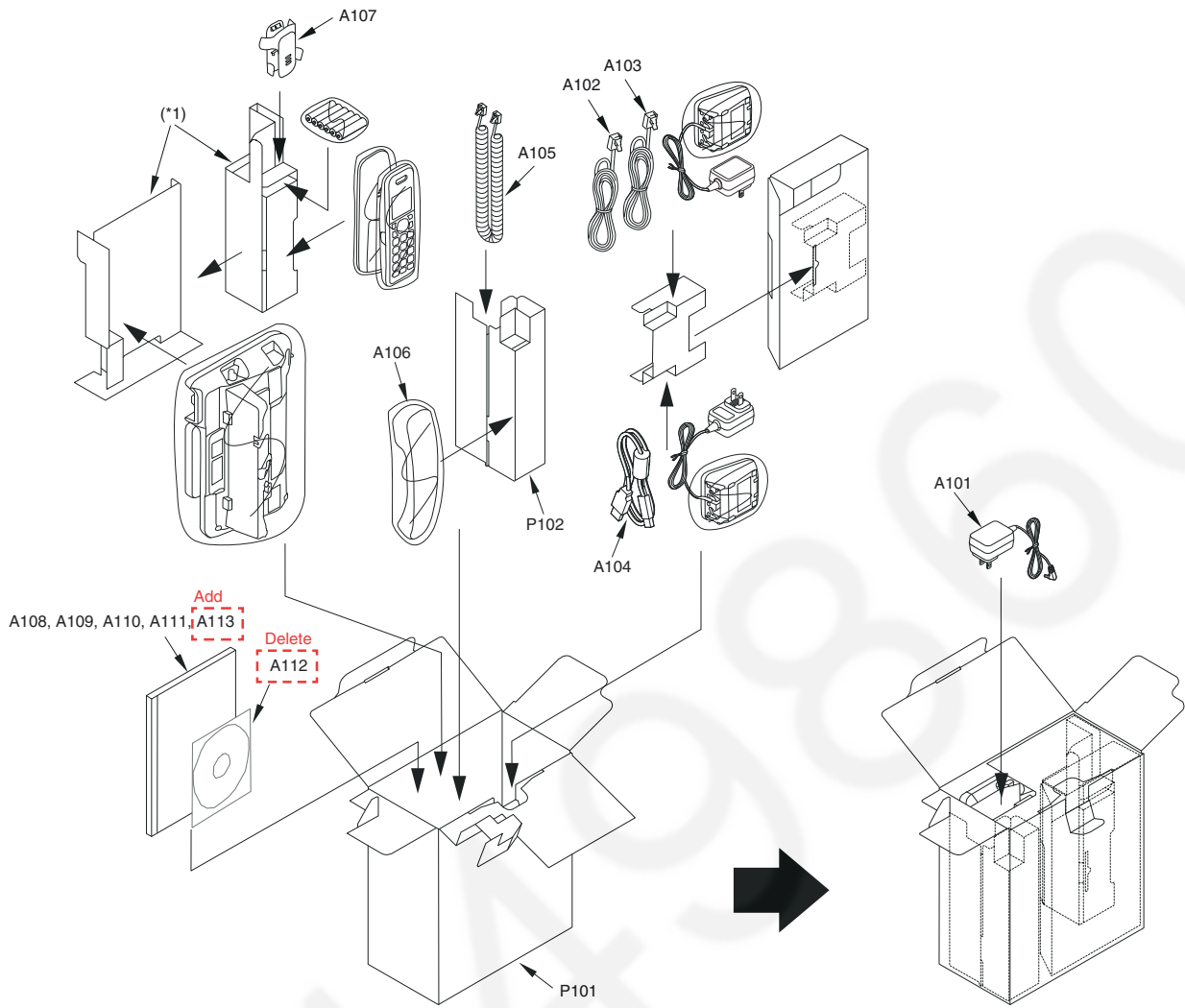
### 2.1. Accessories and Packing Materials

#### 2.1.1. KX-TG9581B



**Note:**  
(\*1) This pad is a piece of Ref No.P2.

## 2.1.2. KX-TG9582B



**Note:**

(\*1) This pad is a piece of Ref No.P102.