

# Service Manual

## Toaster Oven


Model No. **NT-GT1WTN**  
PGF



### **WARNING**

This service information is designed for experienced repair technicians only and is not designed for use by the general public. It does not contain warnings or cautions to advise non-technical individuals of potential dangers in attempting to service a product. Products powered by electricity should be serviced or repaired only by experienced professional technicians. Any attempt to service or repair the product or products dealt with in this service information by anyone else could result in serious injury or death.

### **IMPORTANT SAFETY NOTICE**

There are special components used in this equipment which are important for safety. These parts are marked by  in the Schematic Diagrams, Circuit Board Diagrams, Exploded Views and Replacement Parts List. It is essential that these critical parts should be replaced with manufacturer's specified parts to prevent shock, fire or other hazards. Do not modify the original design without permission of manufacturer.

## TABLE OF CONTENTS

	PAGE
1 SPECIFICATION-----	2
2 LOCATION -----	3
3 TROUBLESHOOTING -----	4
4 OPERATING INSTRUCTIONS-----	5
5 MAINTENANCE-----	7
6 FACTORY SETTING-----	8
7 WIRING DIAGRAM -----	10
8 SCHEMATIC DIAGRAM -----	12
9 REPLACEMENT PARTS -----	13

# 1 SPECIFICATION

Power supply		220V / 240V - 50/60Hz
Power consumption		1200W
Dimensions (W×D×H)	Outer dimensions	37.7cm 27.1cm 21.4cm
	Inner dimensions	26.9cm 20.2cm 6.0cm
Weight(approx.)		3.2kg
Length of the cord		1.0m
Timer		15 minutes timer with bell
Automatic temperature regulator		Thermostat

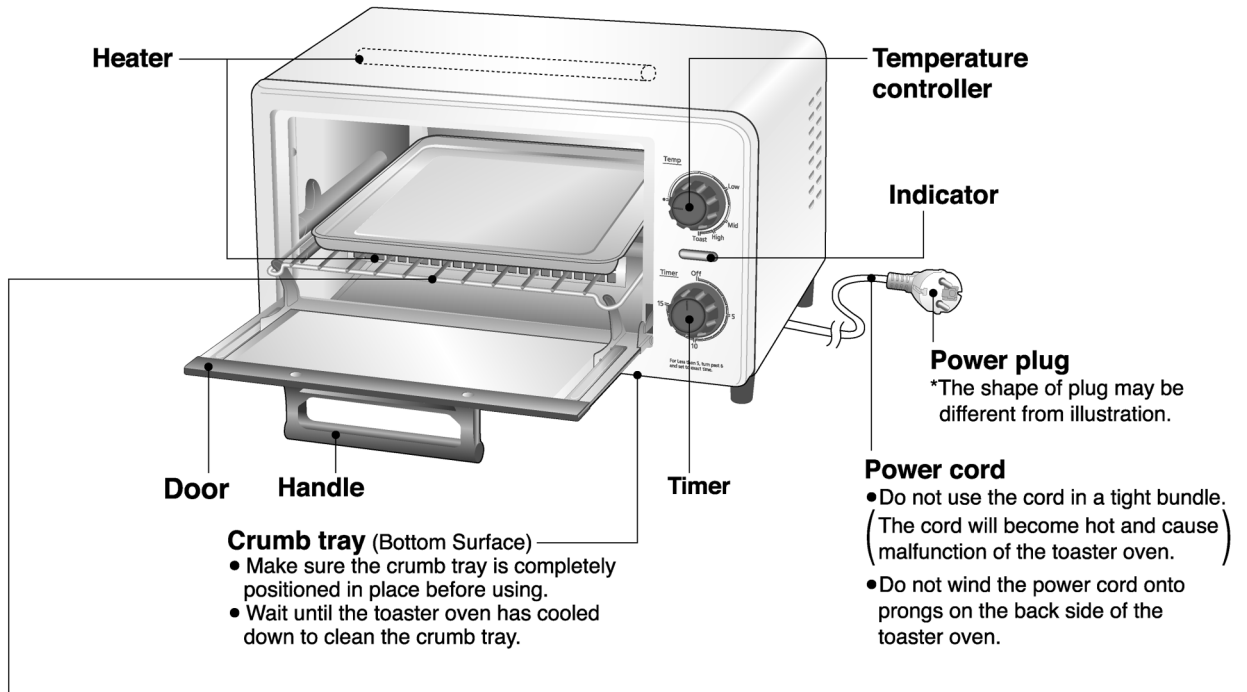
## Cooking temperature settings

Temperature (degree C)	Toast	Approx. 230
	High	Approx. 205
	Mid	Approx. 175
	Low	Approx. 120

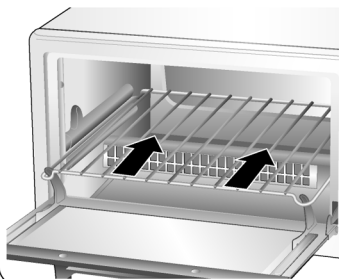
## 2 LOCATION

### Parts Names and Handling Instructions

- Remove packing materials and any stickers. Please wash the oven rack and baking pan before use the appliance for the first time and dry well.



#### Oven rack



##### To attach

- ① Open the door.
- ② Slide the oven rack in to the groove on the both side in the toaster oven until it hooks to the hooks on the door.

##### Note

- Make sure to insert the oven rack correct side up. Otherwise the door may get stuck or bottom of foods will be burnt.

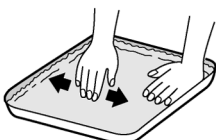


#### Accessory

##### Baking pan (1)



- It is good protection to put a sheet of aluminum foil on the baking pan to prevent contamination.



##### Note

- Do not open the door during cooking. (Cooking will be uneven.)
- The heaters automatically turn off and on during operation to control the temperature during cooking. This is not a malfunction.
- Do not pour water on the door while it is hot. (The glass might break.)
- Smoke or smell occurs when using the toaster oven for the first time, it will not occur along usage.
- Please keep the crumb tray clean. Do not use the unclean crumb tray. (It may cause the table to be burned or lighter color of browning at the bottom surface of bread.)

### 3 TROUBLESHOOTING

#### Quick Performance Test

Check the performance of the device as follows:

#### Request

Be sure to pull the drip pan out of the unit body before doing the following test.

Switch Operations	Operations	Power Consumption (Approximate)
- Connect the power cord to a rated electrical outlet. - Set the temperature to "Toast." - Set the timer to "15."	- The upper and lower heaters will heat up and begin glowing in a short time. - The timer dings when the it reaches the OFF position.	220V-240V 1200W

\* If the temperature is set to "Low," it will take longer for the heater to become hot and glow, and it will take more time to check the performance of the unit.

Make sure to set the temperature to "Toast."

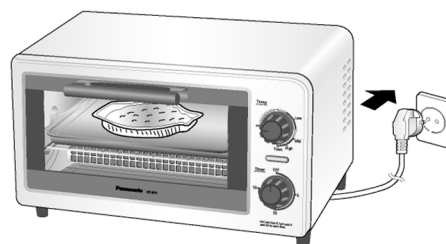
#### Performance test for the thermostat

1. Make sure the body of the appliance is at room temperature.
2. Connect the power cord to a rated electrical outlet.
3. Set the temperature to "Toast."
4. Set the timer to "15."
5. Measure the time from the moment the timer is set (the heaters are powered) to the moment the heaters turn off.  
Check that the heaters turn off after approximately 3 to 6 minutes.

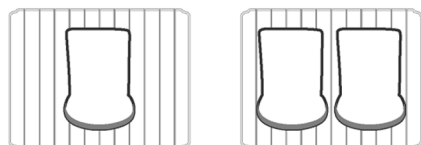
## 4 OPERATING INSTRUCTIONS

# How to Use

- 1** Insert the power plug into the outlet.  
Put the food inside the toaster oven.  
Insert the oven rack correctly.



### For bread



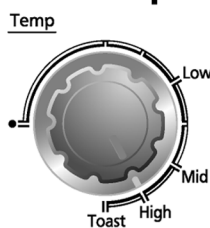
- For better results, be sure the rounded side of sliced bread faces the door.

### For pizza



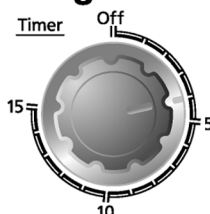
- Place aluminum foil on the baking pan.

- 2** Set the temperature.



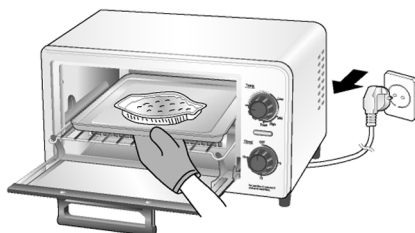
- See the "Cooking Guide" for temperature.

- 3** Set timer to desired cooking time.



- Set timer to start cooking.  
(The indicator will turn on during cooking.)
- For less than 5 minutes cooking, turn past 6 then set to the desired time.
- To stop cooking, turn the timer off.




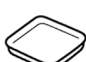
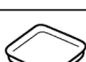
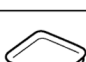

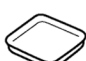
- 4** When cooking is finished, the bell will sound and the timer will be automatically turned off. Take out the food with oven gloves.



- Please be careful when open the door otherwise food may fall behind the oven rack depending on quantity or shape of food.
- After using, unplug the power plug from the outlet.
- Moving sound of the timer can be heard even after the toaster oven has been turned off, but this is not a malfunction.

# Cooking Guide

■ Please use the baking pan for greasy food to prevent from catching a fire due to grease is dropped.

Temperature	Recipe	Quantity	Baking pan	Cooking Time	Preheat
<b>Toast</b>	Toast	1 ~ 2	—	2 ~ 4 min.	—
<b>High</b>	Pizza Toast	1 ~ 2 (25mm of thickness)		7 ~ 10 min.	10 min.
	Gratin	1 (150 g)		9 ~ 12 min.	10 min.
	Frozen Pizza (To heat up)	1 (15 ~ 20cm)		12 ~ 14 min.	10 min.
	Frozen Chicken Nuggets (To heat up)	4 ~ 8 (25 g / piece)		12 ~ 15 min.	10 min.
	Frozen Deep Fry (To heat up)	4 (40 g / piece)		13 ~ 15 min.	10 min.
	Baked Sweet Potatoes	4 (15 mm of sliced) (50 g / piece)		14 ~ 15 min.	10 min.
<b>Mid</b>	Deep Fry Potatoes	1 ~ 4 (60 g / piece)		8 ~ 13 min.	10 min.
	Cookies	6 (10 mm of sliced) (20 ~ 30 g / piece)		9 ~ 12 min.	10 min.
<b>Low</b>	Butter Roll (To heat up)	3 ~ 6 (50 g / piece)	—	3 ~ 5 min.	10 min.

- Cooking times in the table are approximately time which varies depending on the type and quantity of food. Please adjust time by quantity and temperature for your taste.
- Ensure to check condition of food from time to time while cooking.
- Please preheat toaster oven before cooking or heating food up except toast. Without preheat, food may burn or may take longer time to cook.
- When breads are toasted continuously, toasting color get lighter. Please set cooking time longer from second time of toasting.
- If it takes more than 15 minutes to cook the food, set the timer again.
- If the food has not been sufficiently heated, use the timer to heat it further, checking from time to time.
- Do not use the toaster oven for steaming. (Steam will cause malfunction.)
- When cooking with foil, such as when baking large potatoes, use caution to prevent the foil from coming in contact with the heater.  
(The foil might melt away and adhere to the surface of the heater, causing malfunction.)

## 5 MAINTENANCE

# How to Clean

■ Remove the power plug and make sure the toaster oven is cold.

### Note

- Do not use benzin, thinner, polishing powder, metal brush or nylon brush, otherwise the surface will be damaged.
- After cleaning, set the oven rack and crumb tray correctly.
- Please do not use dishwasher.

### Baking pan

Wash with diluted dish soap (neutral) and a soft sponge, and dry well.

- Do not use the metal brush or nylon brush.  
(The surface of the baking pan might be damaged.)

### Exterior / Interior

Wipe with a well-wrung cloth.

- Do not touch the heater.  
(It may cause a damage.)

### Oven rack

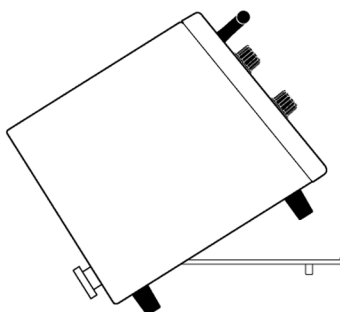
Wash with diluted dish soap (neutral) and a soft sponge, and dry well.

- Do not apply exceeding power on the oven rack. (It may cause a damage.)



### Crumb tray

Wipe with a well-wrung cloth.



### How to open

- Uplift the toaster oven by 45° direction, and press down the tab toward to back and pull down to open the crumb tray.

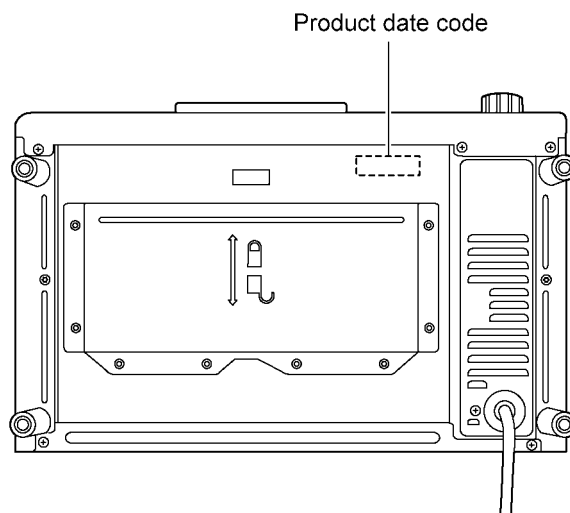
### Note

- Do not use the unclean crumb tray.  
(It may cause the table to be burned or lighter color of browning at the bottom surface of bread.)

## 6 FACTORY SETTING

### 6.1. PLACE OF PRODUCT DATE CODE

The product date code is impressed upon the bottom face of the unit.

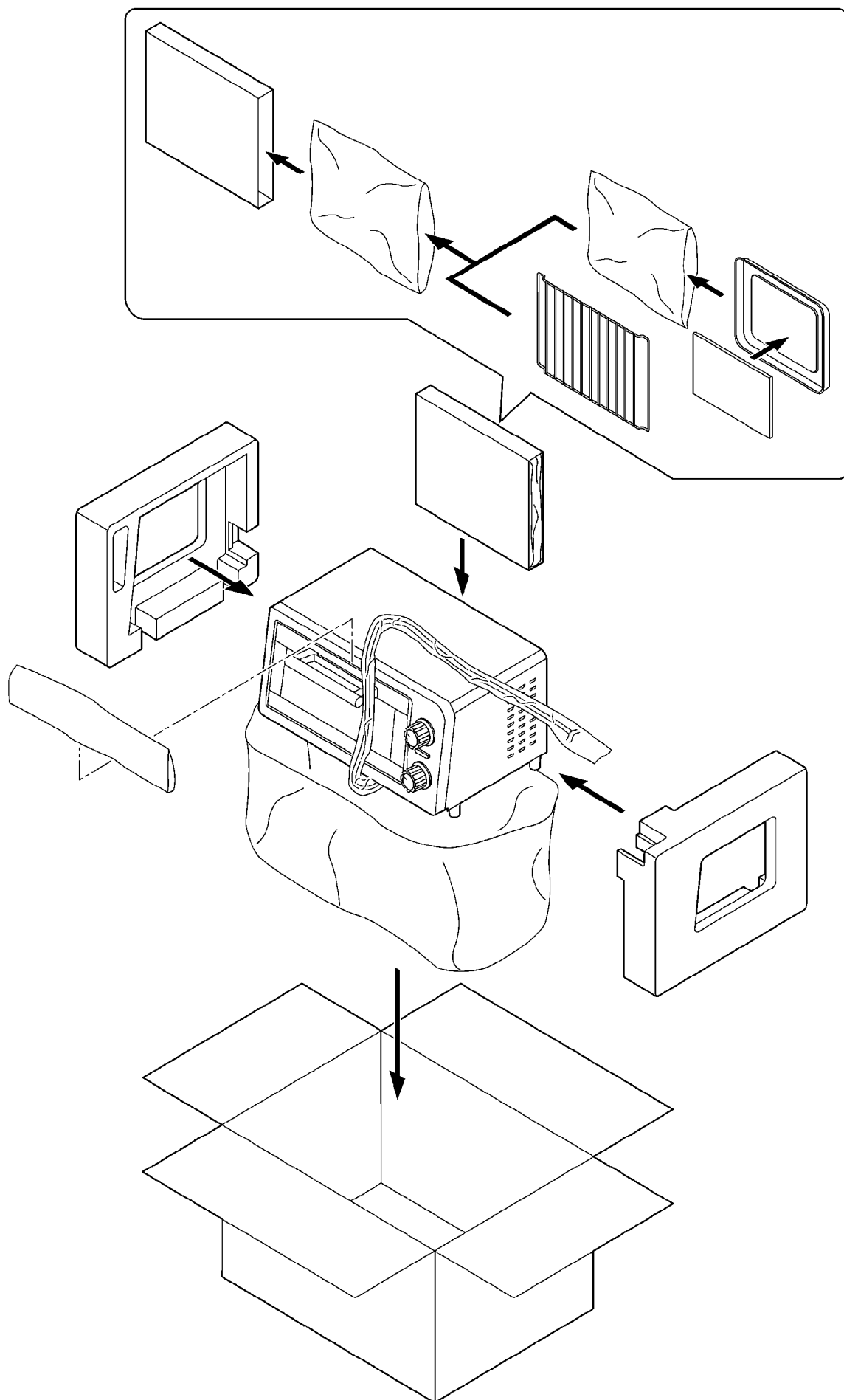


ex.

0	12	06	4	
				Production Line No.
				Manufactured Date
				Manufactured Month (December)
				Last number of Manufactured Year (2010)

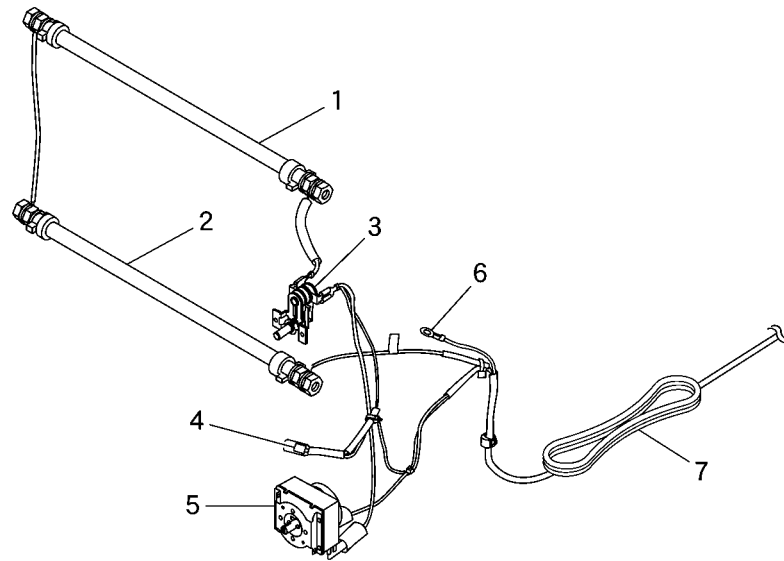


## 6.2. Packing procedure



## 7 WIRING DIAGRAM

### 7.1. Basic wiring diagram

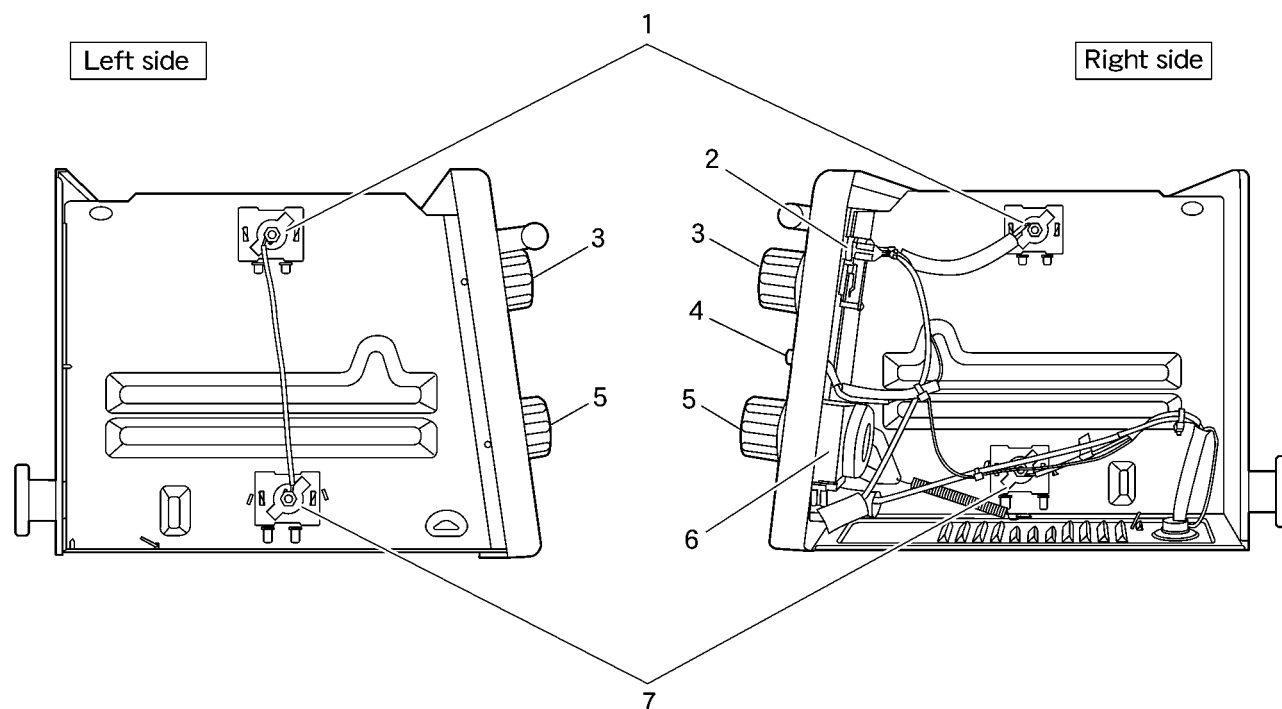


No.	Parts Name
1	Upper heater
2	Lower heater
3	Switch
4	Lamp
5	Timer
6	Ground
7	Power cord

## 7.2. Wiring diagram

### Caution

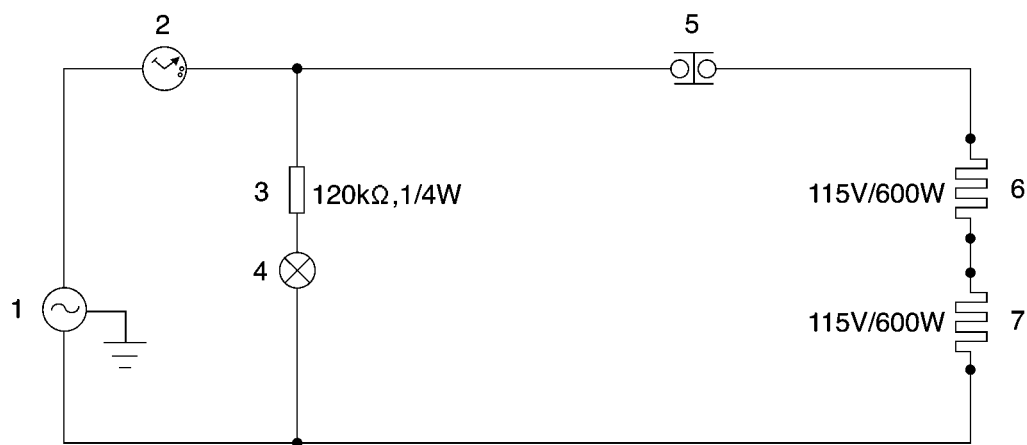
Make sure that the cables are routed as they were before the repair. Otherwise, the lead wire may touch the end face of parts, resulting in a failure or electric shock.



No.	Parts Name
1	Upper heater
2	Switch
3	Switch knob
4	Lamp
5	Timer knob
6	Timer
7	Lower heater

# 8 SCHEMATIC DIAGRAM

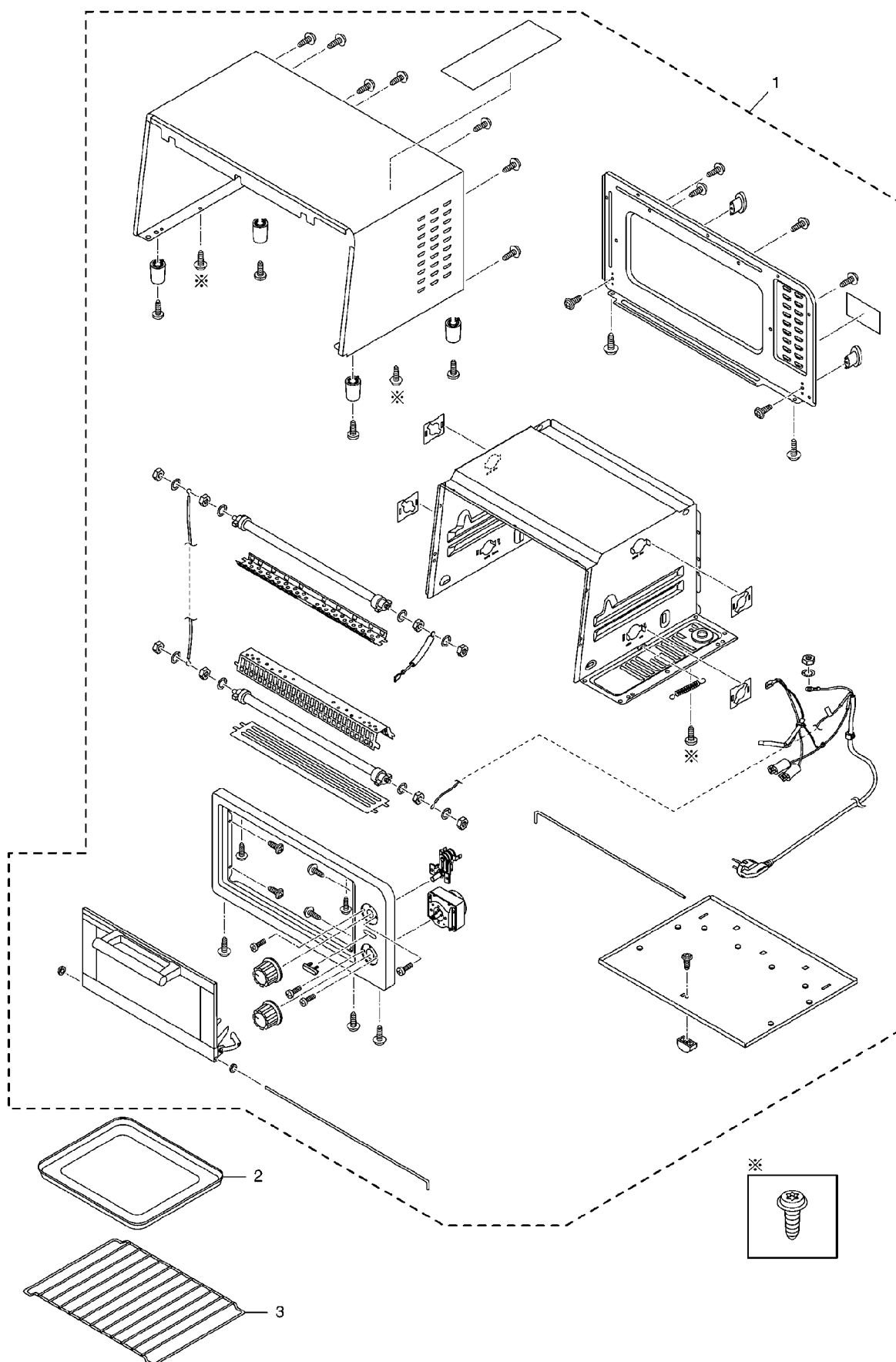
## 8.1. Circuit diagram



No.	Parts Name
1	Power
2	Timer
3	Switch
4	Lamp
5	Thermostat
6	Upper heater
7	Lower heater

## 9 REPLACEMENT PARTS

### 9.1. Parts List



## 9.2. Replacement Parts List

Safety	Ref. No.	Part No.	Part Name & Description	Quantity	Remarks
⚠	1	ABA00Y16900S	Toaster oven A'ssy	1	
	2	ABK00Y169	Tray	1	
	3	ABA50Y169	Oven rack	1	

Safety	Ref. No.	Part No.	Part Name & Description	Quantity	Remarks
⚠		ABZ51Y169	Operating instructions	1	
		ABZ01Y169	Carton box	1	
		ABZ75Y16900S	Cushion set	1	