

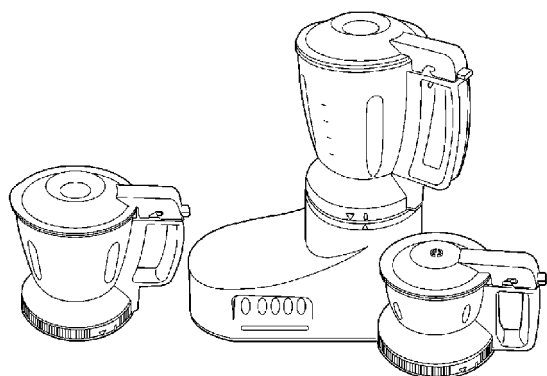
# Service Manual

## Super Mixer Grinder

Model No. **MX-AC300**

Model No. **MX-AC220**

Model No. **MX-AC210**



Color: Grey/Blue  
Destination: India

## TABLE OF CONTENTS

	PAGE	PAGE
<b>1 Safety Precautions</b> -----	<b>2</b>	
<b>2 Specifications</b> -----	<b>3</b>	
<b>3 Location of Controls and Components</b> -----	<b>4</b>	
3.1. Accessories/Parts Identification-----	4	
<b>4 Troubleshooting Guide</b> -----	<b>5</b>	
<b>5 Disassembly and Assembly Instructions</b> -----	<b>7</b>	
5.1. Rubber Cap, Connector U (lower)-----	7	
5.2. Bottom Plate-----	7	
5.3. Power Cord U / Circuit Breaker-----	8	
5.4. Switch Complete-----	9	
5.5. Switch Complete B-----	9	
5.6. Motor Complete / Upper Body-----	10	
5.7. Blender Jar Complete (Mill Cup Complete / Chutney Jar Complete)-----	11	
5.8. Lid C (Lid A)-----	13	
<b>6 Wiring Connection Diagram</b> -----	<b>14</b>	
6.1. Wiring Diagram-----	14	
6.2. Electric Circuit-----	14	
<b>7 Exploded View and Replacement Parts List</b> -----	<b>15</b>	
7.1. Parts Location (MX-AC300)-----	15	
7.2. Replacement parts list (MX-AC300)-----	16	
7.3. Parts Location (MX-AC220)-----	18	
7.4. Replacement parts list (MX-AC220)-----	19	
7.5. Parts Location (MX-AC210)-----	21	
7.6. Replacement parts list (MX-AC210)-----	22	
7.7. Packing Procedure-----	24	




# Panasonic

© 2007 Panasonic Home Appliances India Co., Ltd.  
All rights reserved. Unauthorized copying and distribution is a violation of law.




# 1 Safety Precautions

The precautions listed below must be followed in order to prevent accidents during repair and ensure the safety of the product after repair.






■ The following labels describe the degree of danger and damage that might result through non-compliance with these precautions.

	<b>Danger</b>	This section warns of the urgent danger of death or serious injury.
	<b>Warning</b>	This section warns of the risk of death or serious injury.
	<b>Caution</b>	This section warns of the risk of injury or damage to property.


■ The following labels describe the types of rules that need to be followed.  
(These labels are examples.)

	This label shows a "reminder" action to be paid attention to.
	This label shows a "prohibited" action.
	This label shows a "compulsory" action to be followed without fail.

## **Warning**

 <b>Return the wiring to its original state after repairs have been made</b> Otherwise, the lead wire may touch the rotary parts or edge of a part, causing malfunction, electric shock or fire to occur.	
<p><b>Be careful of electrical shocks</b></p>  <p>High voltage</p> <p>During wiring test, such as measuring voltage, be careful of the high voltage part, such as the battery and the lead wire terminals.</p>	<p><b>Before repair</b></p>  <p>Unplug</p> <p>Make sure to cut off the power line before disassembly, parts replacement and assembly. Otherwise, electrical shock or injury may occur.</p>
<p><b>Use a designated part</b></p>  <p>Make sure to use a designated part when the part is marked in circuit diagrams and parts lists. Otherwise, smoke, fire or failure may occur.</p>	<p><b>Wait until the rotary part has completely stopped.</b></p>  <p>Do not touch</p> <p>You may injure your hands even if the part is only rotating slowly.</p>

## **Caution**

 <p><b>Wear gloves for disassembly, replacement and assembly.</b></p> <p>Make sure to wear gloves in order to prevent injuries from metal edges and electric shock when the power is turned on.</p>
--

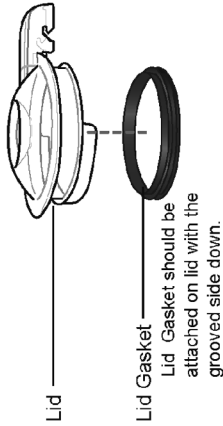
## 2 Specifications

Model No.		MX-AC300	MX-AC220	MX-AC210	
Power Supply		230V~50Hz			
Power Consumption		550W			
Protection		Circuit Breaker			
Rating		30 min			
Material	Housing	Plastic(ABS)			
	Jar	Plastic(Polycarbonate)	Not Available	Plastic(Polycarbonate)	
	Mill Jar	Stainless Steel		Not Available	
	Chutney Jar	Stainless Steel			
	Lid	Plastic(Polycarbonate)			
Blade		Stainless Steel Hard Type			
Speed Control		3 Speed with 1 Pulse & 1 Off Button(piano Type Buttons)			
Capacity	Jar	Max.	1.0L(Wet only)	Not Available	1.0L(Wet only)
	Mill Jar		0.5L(Dry)/0.3L(Wet)		Not Available
	Chutney Jar		0.2L		
Weight		4.6kg	3.9kg	3.9kg	
Accessories		Spatula,Whipping Plate			

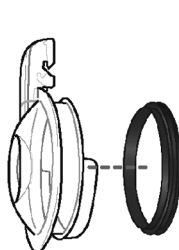
# 3 Location of Controls and Components

## 3.1. Accessories/Parts Identification

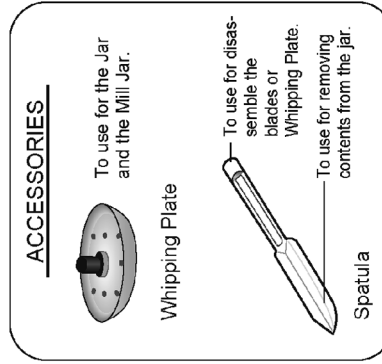
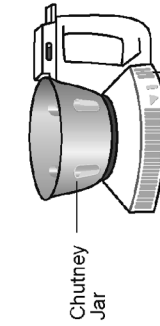
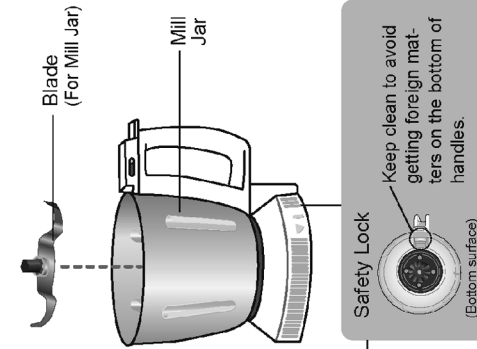
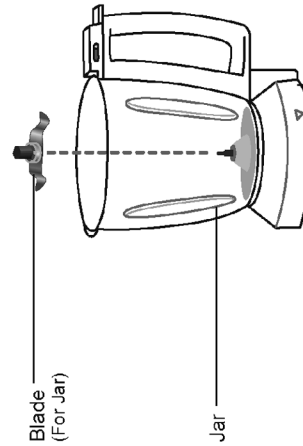
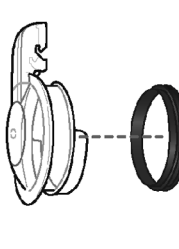
**JAR UNIT**  
(FOR BLENDING)



**MILL JAR UNIT**  
(FOR DRY / WET GRINDING)



**CHUTNEY JAR UNIT**  
(FOR DRY / WET GRINDING)



● Do not switch blades with other Jar.  
(Cause for overflow or leak by assembling a wrong blade.)

● The Chutney Blade is fixed permanently.  
Do not attempt to remove the blade.

## 4 Troubleshooting Guide

TROUBLE	CAUSE	INSPECTION	REMEDY
Abnormal noise & Vibrations.	<ol style="list-style-type: none"> <li>Screws are loose.</li> <li>Cutter shaft is deformed or rubbing.</li> <li>Cutter is de-formed, worn out or broken.</li> </ol>	<ol style="list-style-type: none"> <li>Visual</li> <li>Visual</li> <li>Visual</li> </ol>	<ol style="list-style-type: none"> <li>Tighten</li> <li>Replace cutter assembly.</li> <li>Replace cutter assembly.</li> </ol>
Liquid leakage from jars.	<ol style="list-style-type: none"> <li>Cutter base packing defective.</li> </ol>	<ol style="list-style-type: none"> <li>Dismantle jar and check visually for cutter base packing defect.</li> </ol>	<ol style="list-style-type: none"> <li>Replace Cutter Base Packing.</li> </ol>
Motor doesn't rotate.	<ol style="list-style-type: none"> <li>Power cord is defective.</li> <li>Motor burnt.</li> <li>Circuit breaker tripped off.</li> <li>Carbon brush worn out</li> </ol>	<ol style="list-style-type: none"> <li>Using multimeter check continuity.</li> <li>Using multimeter check Resistance as below               <ol style="list-style-type: none"> <li>Black to Red - 20Ω</li> <li>Black to Blue - 22Ω</li> <li>Black to Yellow - 24Ω</li> </ol> </li> <li>Reset &amp; check continuity with multimeter.</li> <li>Visual</li> </ol>	<ol style="list-style-type: none"> <li>Replace power cord.</li> <li>Replace motor.</li> <li>Reset the circuit breaker.</li> <li>Change carbon brush full set.</li> </ol>
Motor overheats.	<ol style="list-style-type: none"> <li>High voltage.</li> <li>Shorted motor.</li> </ol>	<ol style="list-style-type: none"> <li>Using multimeter check continuity.</li> <li>Using multimeter check Resistance as below               <ol style="list-style-type: none"> <li>Black to Red - 20Ω</li> <li>Black to Blue - 22Ω</li> <li>Black to Yellow - 24Ω</li> </ol> </li> </ol>	<ol style="list-style-type: none"> <li>Check the input voltage from customer end.</li> <li>Replace motor.</li> </ol>

**NOTE: BEFORE DELIVERY CHECK THE MIXER GRINDER IN FRONT OF THE CUSTOMER.**

TROUBLE	CAUSE	INSPECTION	REMEDY
Motor overheats	3. Overload (with solids or highly viscous ingredient). 4. Motor is continuously operated for more than 30 minutes.	3. Check the smoothness of the motor shaft by rotating with hand.	3. Refer to operating instruction. 4. Explain to customer that mixer should be operated only for 30 minutes.
Circuit breaker does not work & motor burns.	1. Circuit breaker failure. 2. Motor burns.	1. Using multimeter check continuity. 2. Using multimeter check Resistance as below a) Black to Red - 20Ω b) Black to Blue - 22Ω c) Black to Yellow - 24Ω	1. Replace circuit breaker. 2. Motor replace.
Circuit breaker does not rest.	1. Circuit breaker is open.	1. Check continuity with multimeter.	1. Replace the circuit breaker.
Blade is not rotating.	1. Connector upper worn out. 2. Connector lower worn out. 3. Foreign materials is between cutter & cutter base assembly.	1. Visual 2. Visual 3. Visual	1. Replace connector upper. 2. Replace connector lower. 3. Clean the cutter base assembly.

**NOTE: BEFORE DELIVERY CHECK THE MIXER GRINDER IN FRONT OF THE CUSTOMER.**

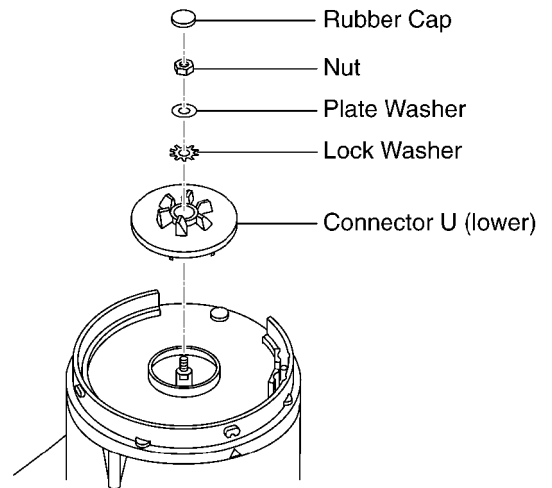
# 5 Disassembly and Assembly Instructions

<b>⚠ Caution</b>	
<b>⚠</b>	<b>Be careful not to injure yourself on the metal edge during disassembly, replacement, or assembly.</b> Make sure to wear gloves.

For assembly, refer to the Assembly Instructions, and perform the procedures in the opposite order of disassembly.

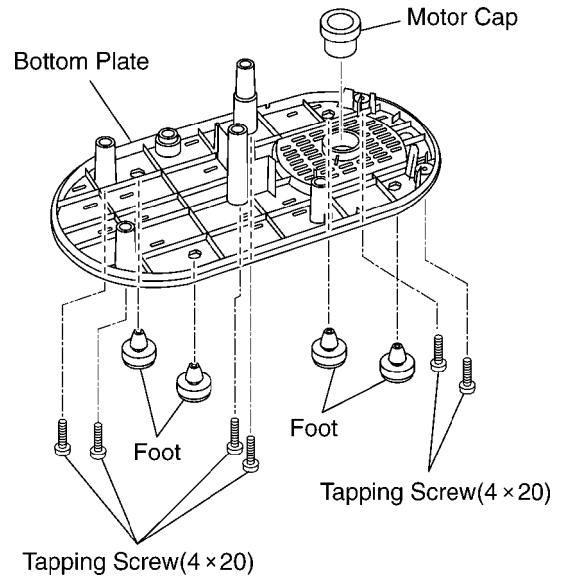
## 5.1. Rubber Cap, Connector U (lower)

1. Remove Rubber Cap
2. Turn the Nut clockwise, and remove it.
3. Pull out Connector U (lower) and remove Plate Washer and Lock Washer.



## 5.2. Bottom Plate

1. Remove the 6 Tapping Screws (4x20), and remove the Bottom Plate.
2. Detach the Motor Cap and Foot from the Bottom Plate.



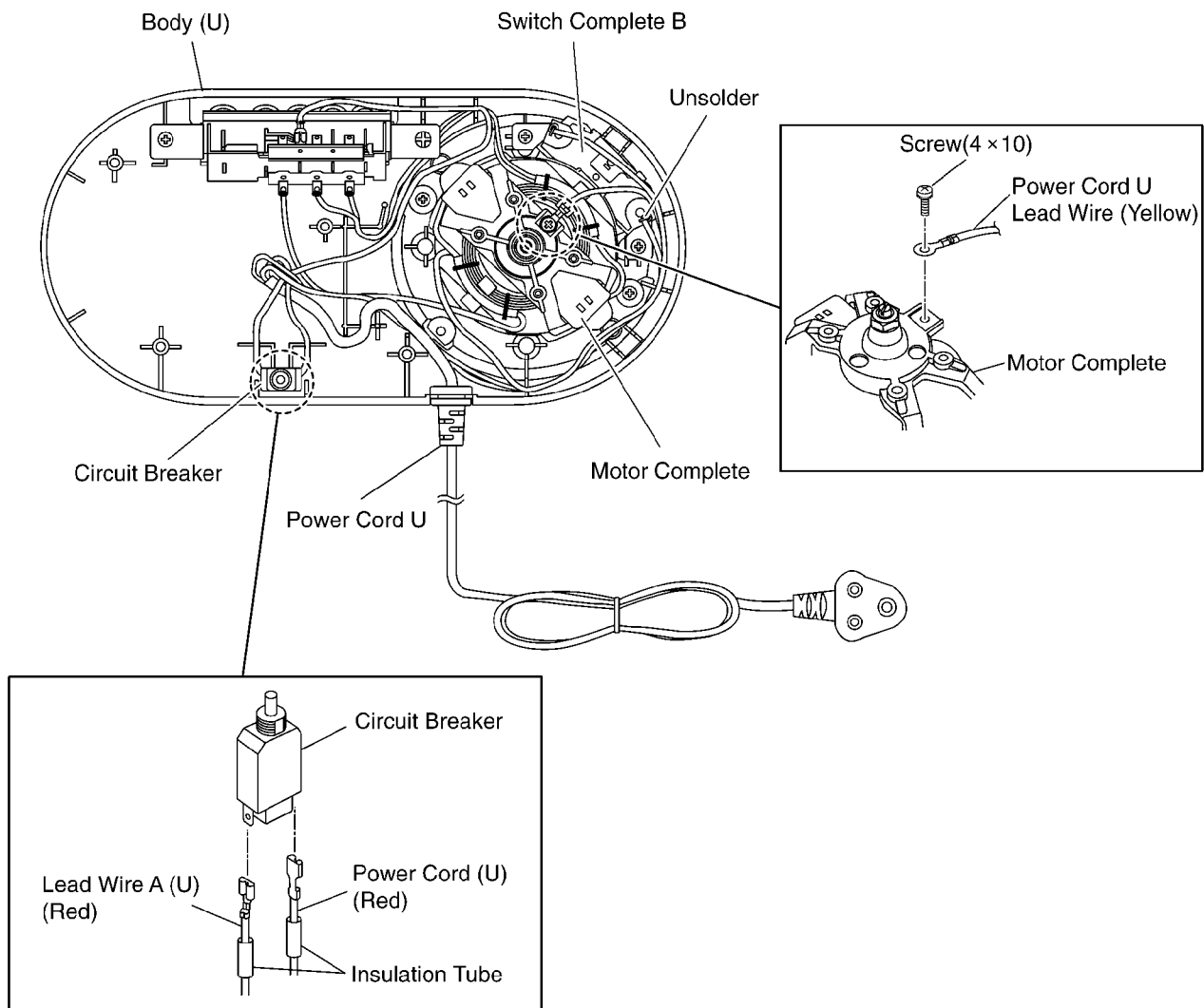
### 5.3. Power Cord U / Circuit Breaker

1. Remove the Screw (4x10) which fixes the Motor Complete, and remove the Lead Wire (Yellow).
2. Move the 2 Insulation Tubes from the Circuit Breaker, remove the faston terminals of Lead Wire A (U) and Power Cord (U), and remove the Circuit Breaker.

#### Assembly Instructions

Attach the Lead Wire to the Circuit Breaker, and set Insulation Tubes firmly.

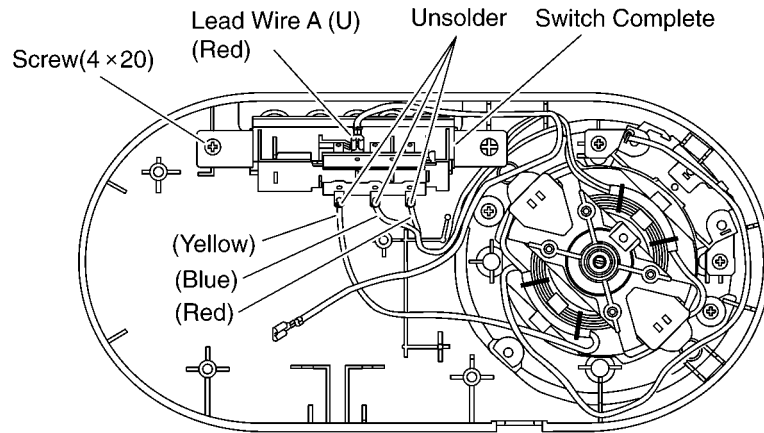
3. Melt the solder which fixes the Lead Wire (Black) on Switch Complete B, and remove the Power Cord (U).





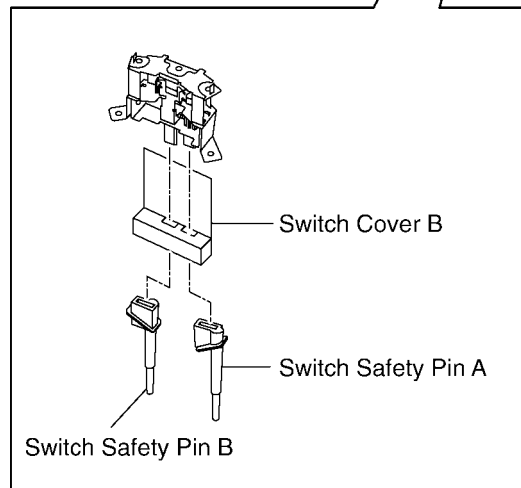
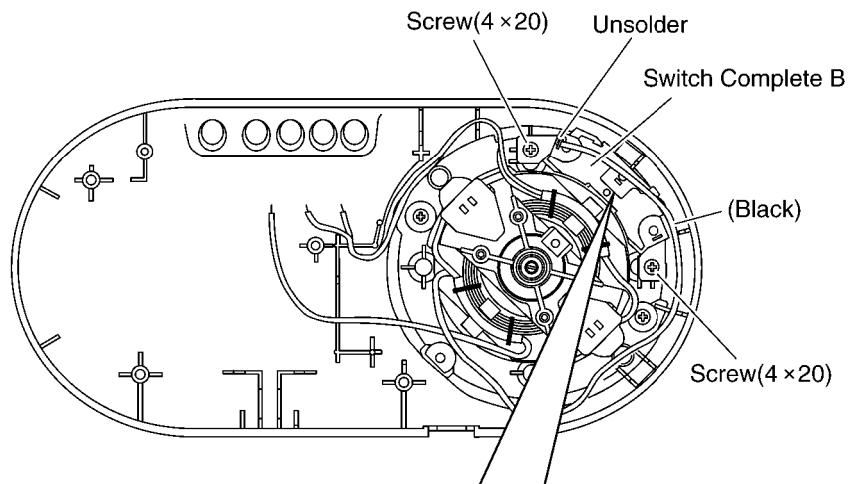
## 5.4. Switch Complete

1. Remove the faston terminal of Lead Wire A (U).
2. Melt the solder and detach the Lead Wire Yellow, Blue, Red from the Motor Complete.
3. Remove the Screw (4x20), and remove the Switch Complete.



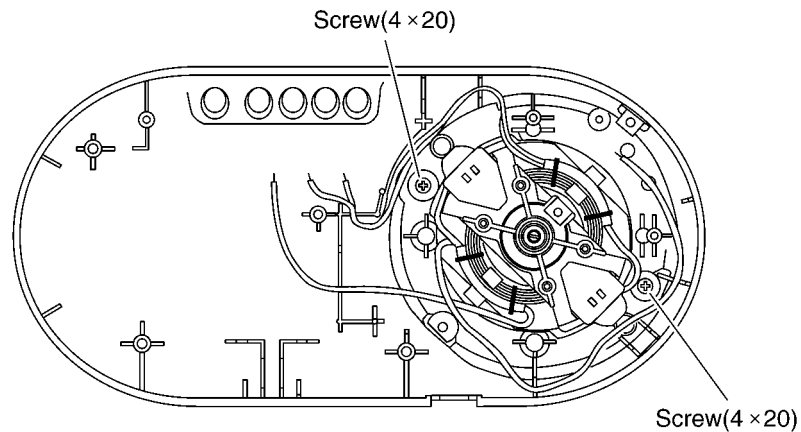
## 5.5. Switch Complete B

1. Melt the solder and detach the Lead Wire (Black) from the Motor Complete.
2. Remove the Screws (4x20) and remove Switch Complete B.

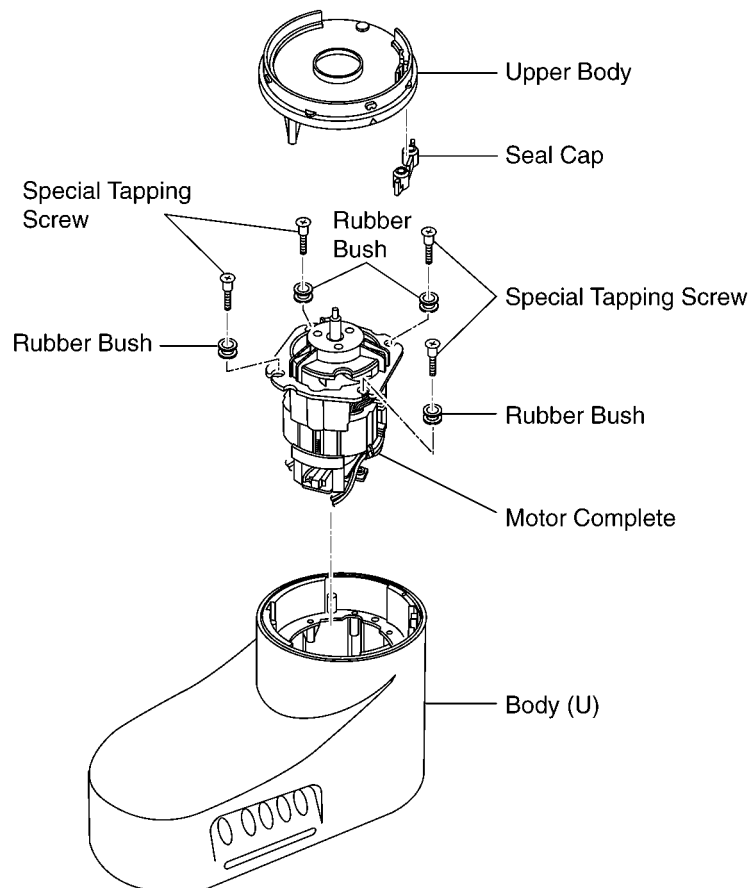


## 5.6. Motor Complete / Upper Body

1. Remove the 2 Screws (4x20)



2. Put the body upside-down and remove the Upper Body.
3. Remove the 4 Special Tapping Screws, which fix the Motor Complete, and remove the Motor Complete.

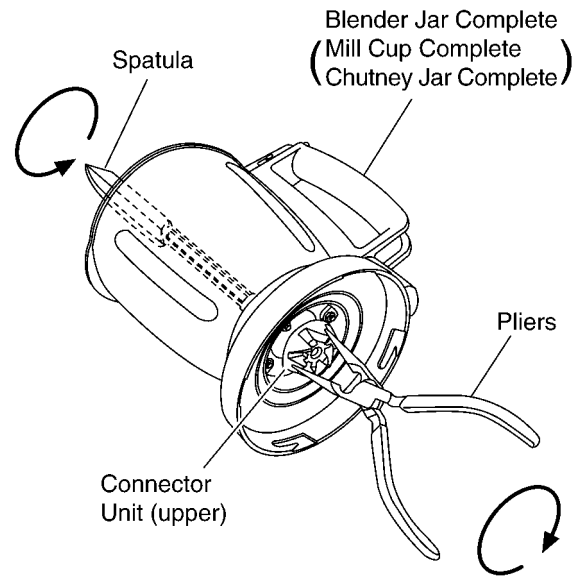


### Assembly Instructions

Add vaseline in 2 hole positions of Seal Cap before assembling into the upper body.

## 5.7. Blender Jar Complete (Mill Cup Complete / Chutney Jar Complete)

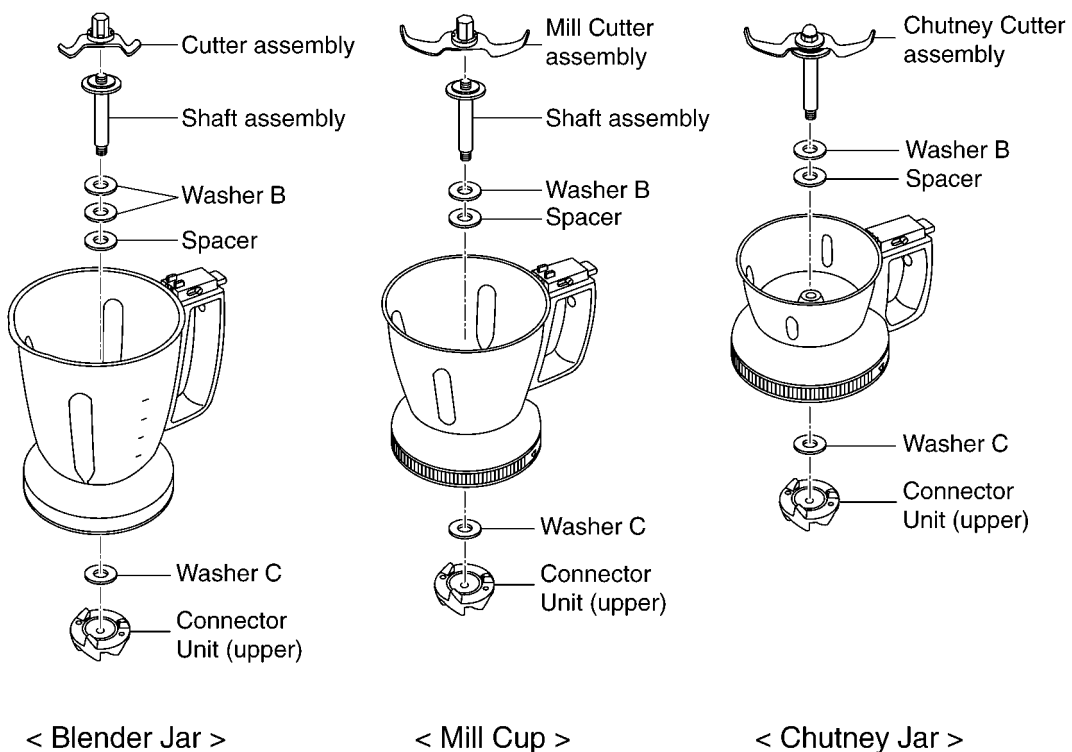
1. Set the Spatula to the Cutter assemble, insert the longnose pliers into the holes of the Connector Insert (upper), turn it as shown in the picture and take out the blade.



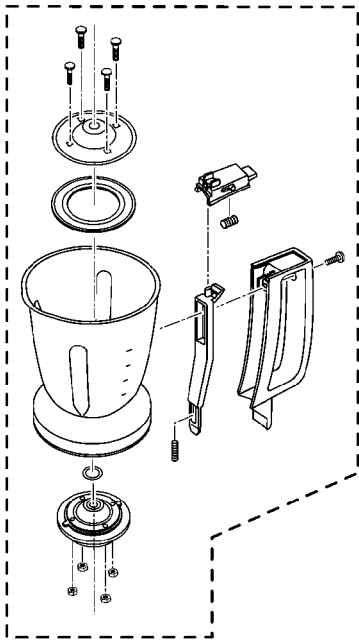
2. Remove Cutter assemble, Shaft assembly, Washer B, Spacer, Washer C and Connector Insert (upper).
  - As the Chutney Cutter assembly consists of Cutter and Shaft integrally, they cannot be separated.
  - The number of the Washer B differs in Blender Jar Complete, Millcut Complete, and Chutney Jar Complete.

### Assembly Instructions

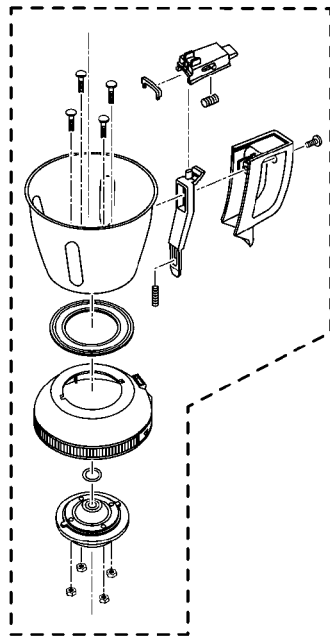
Refer to the picture, and pay attention to the order and the number of Washer B, Spacer, Washer C when you assemble.



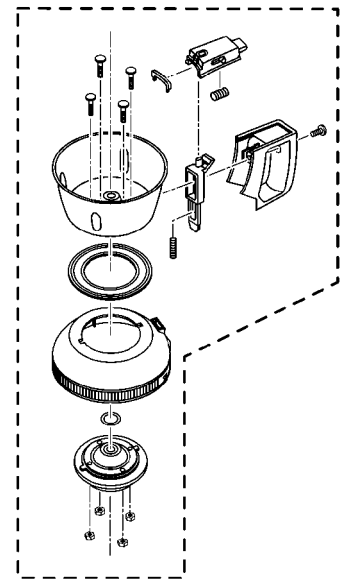
3. Remove 4 pcs of M4 nuts and the truss tapping screw fixing Handle to Jar(Cup) in order to disassemble Blender Jar Assembly, Mill Cup Assembly or Chutney Jar Assembly.



< Blender Jar Assembly >



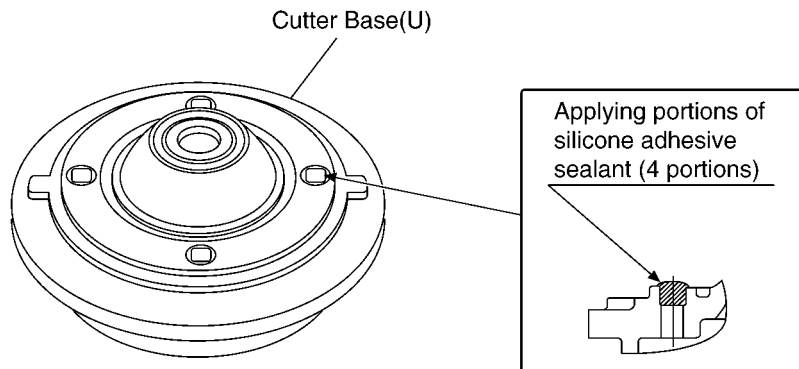
< Mill Cup Assembly >



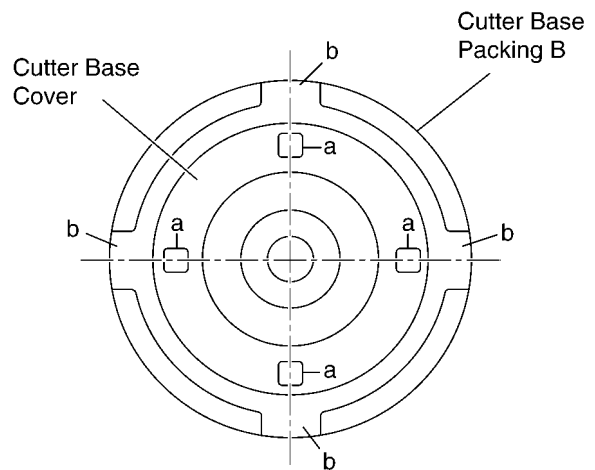
< Chutney Jar Assembly >

**Assembly Instructions**

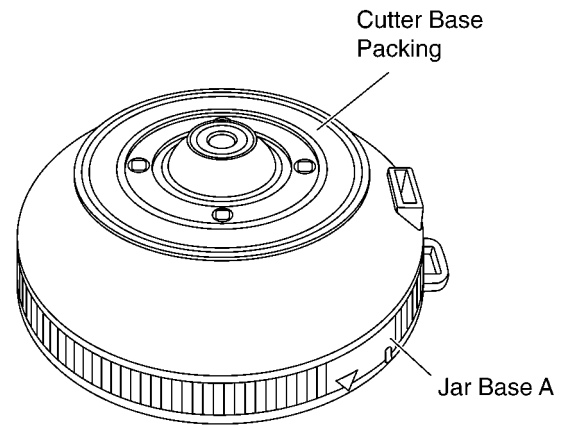
a. Apply Silicone Adhesive Sealant(TSE382C) into the screw holes(4 portions) of Cutter Base (U).



b. Cutter Base Packing B for Blender Jar is to be set in the correct direction as shown in the figure. The grooves b are to be in alignment with the holes a of Cutter Base Cover.



- c. Cutter Base Packing for Mill Cup and Chutney Jar is to be set in the direction of Cutter Base Packing rib side up.



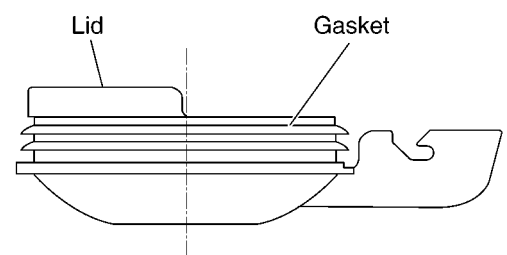
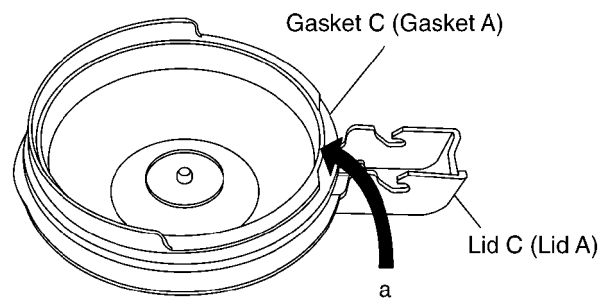
- d. After assembling Blender Jar, Mill Cup or Chutney Jar, fill the Jar(Cup) with maximum quantity of water (Refer to Specifications: Page 3), keep it for 24 hrs and confirm no water leakage. In case of water leakage, reassembly Jar(Cup) in accordance with Assembly Instructions.

## 5.8. Lid C (Lid A)

1. Remove Gasket C (Gasket A) from part "a" of Lid C (Lid A).

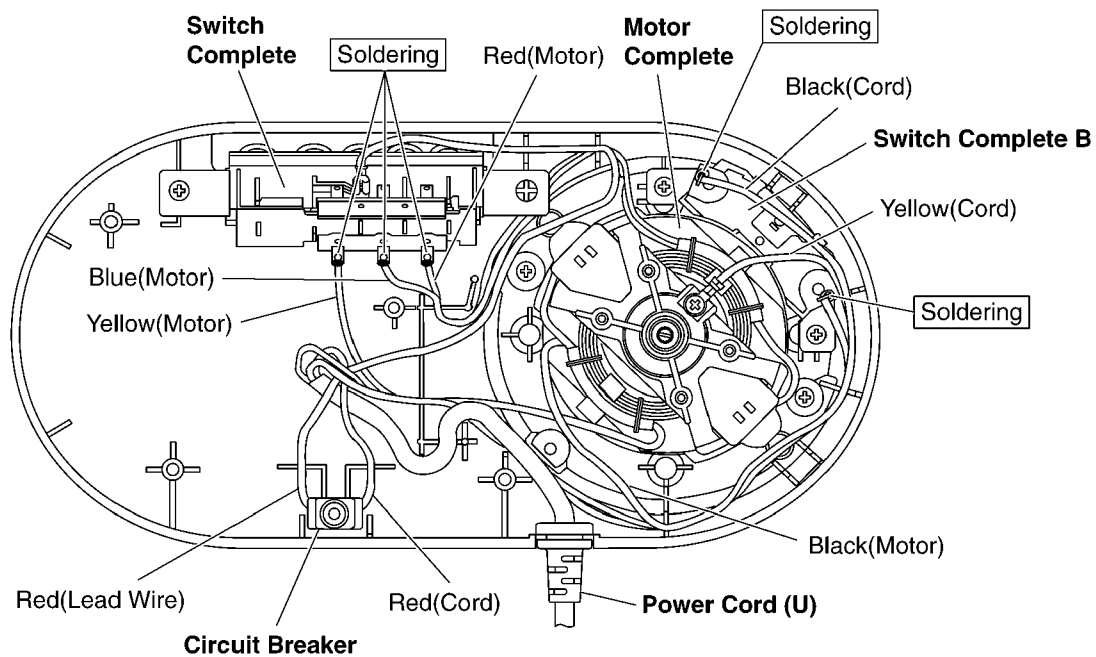
### Assembly Instructions

- a. Pay attention to the orientation of Gasket C (Gasket A). Assemble it in the correct orientation.
- b. Apply cornstarch on Gasket C(Gasket A) after assembling it into Lid.

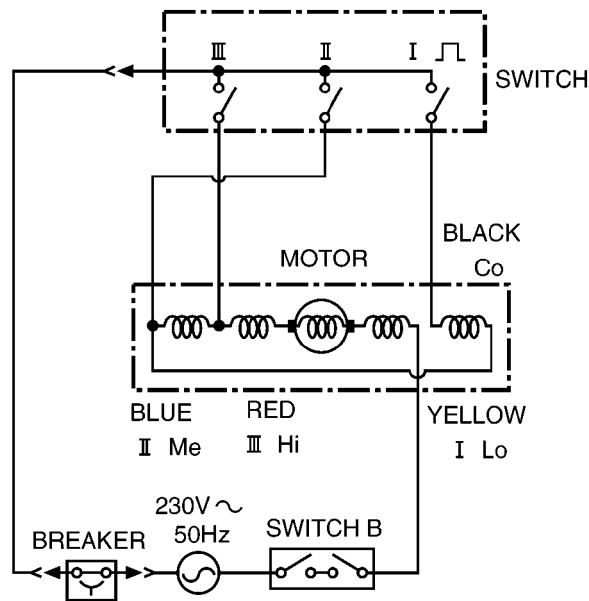


# 6 Wiring Connection Diagram

## 6.1. Wiring Diagram



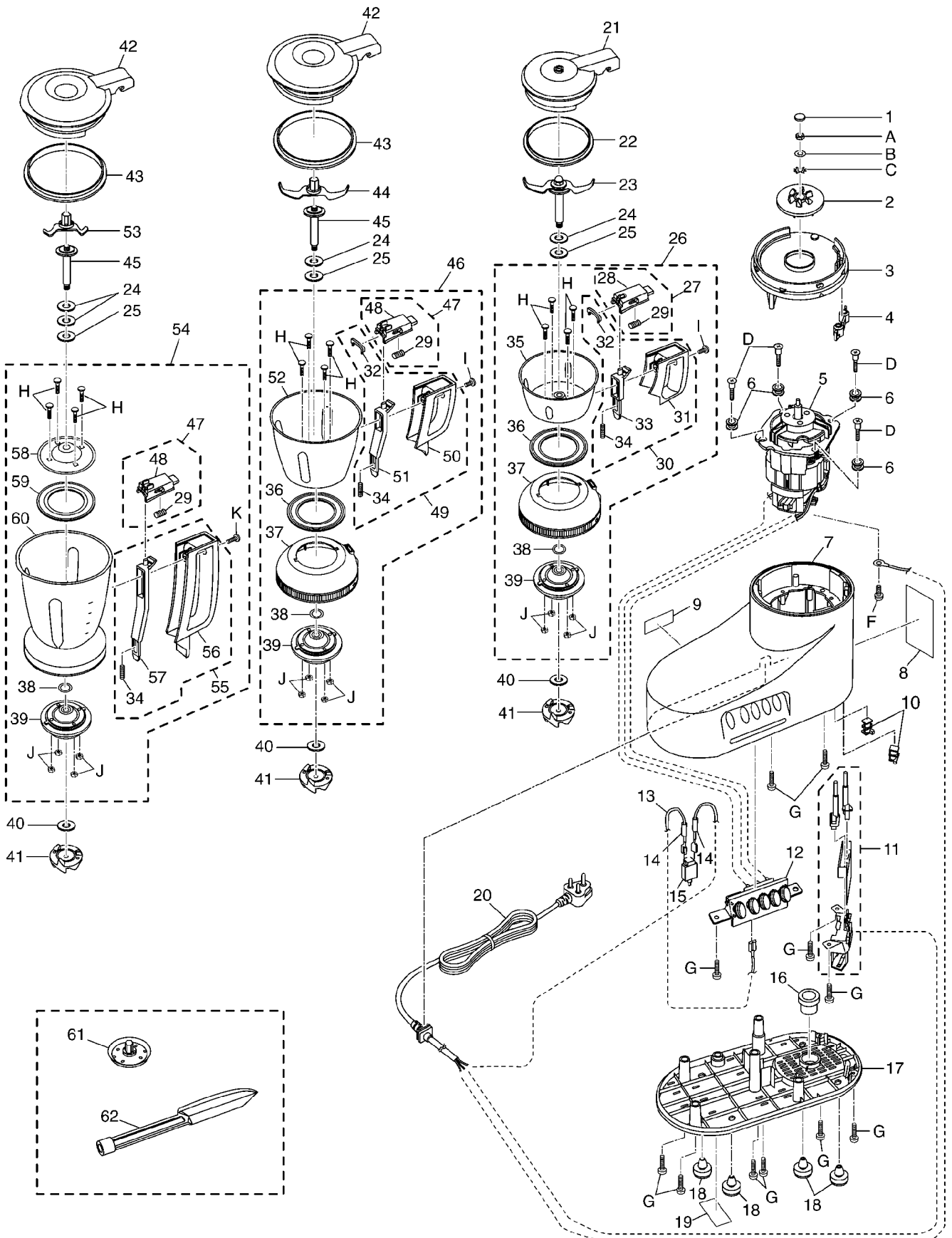
## 6.2. Electric Circuit



As shown in the wiring diagram heavy duty motor's yellow wire is connected with low speed switch terminal, blue wire is connected with medium speed switch terminal, red wire is connected with maximum speed switch terminal. Motor black wire is connected to power cord black wire, Power cord green wire is connected to motor body for earth and Red wire is connected to circuit breaker. One end of the lead wire is connected to the circuit breaker and the other end is connected with switch.

# 7 Exploded View and Replacement Parts List

## 7.1. Parts Location (MX-AC300)



## 7.2. Replacement parts list (MX-AC300)

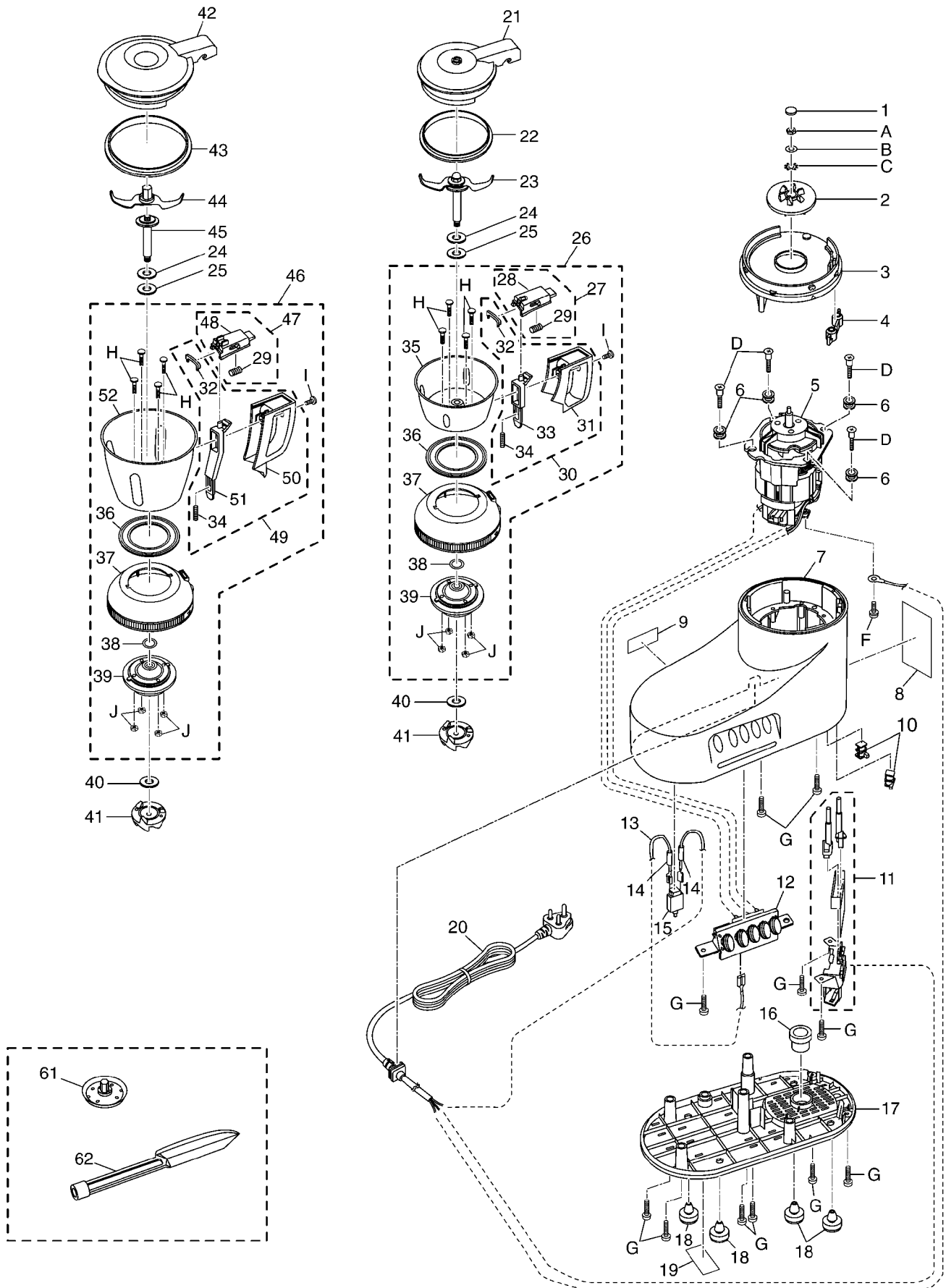
Safety	Ref. No.	Part No.	Part Name & Description	Pcs/ Set	Remarks
	1	AVB05-125	Rubber Cap	1	
	2	AVB99-1251	Connector U(lower)	1	
	3	AVB06-193-H0	Upper Body(Gray)	1	
	3	AVB06-193-A0	Upper Body(Blue)	1	
	4	AVB18-193	Seal Cap	1	
△	5	AVM99-193	Motor Complete	1	
	6	AVB12-125	Rubber Bush	4	
	7	AVB98-193	Body (U)	1	
	8	AVY03-193	Caution Label A	1	
	9	AVY02-151	Caution Label	1	
	10	AVB11-125	Tapping Boss	2	
△	11	AVN23-193	Switch Complete B	1	
△	12	AVN03-158	Switch Complete	1	
△	13	AVP97-193	Lead Wire A(U)	1	
	14	AVP02-125	Insulation Tube	2	
△	15	AVN07-125	Circuit Breaker	1	
	16	AVB04-158	Motor Cap	1	
	17	AVB02-193-H0	Bottom Plate(Gray)	1	
	17	AVB02-193-A0	Bottom Plate(Blue)	1	
	18	AVB03-125	Foot	4	
	19	AVY04-193	Name Plate	1	
△	20	AVP94-193	Power Cord(U)	1	
	21	AVF07-193	Lid A	1	
	22	AVE29-158	Gasket A	1	
	23	AVF93-158	Chutney Cutter assembly	1	
	24	AVF10-125	Washer B	4	Bake t=0.6
	25	AVF04-158	Spacer	3	Metal t=0.3
	26	AVA36-193	Chutney Jar Assembly	1	
	27	AVA38-193-W0	Handle Top Cover(S)	1	
	28	AVE76-193-W0	Handle Top Cover(U)	1	
	29	AVE35-193	Button Spring	3	
	30	AVA41-193-W0	Chutney Handle(S)	1	
	31	AVE21-193-W0	Chutney Handle	1	
	32	AVE39-193	Handle Seal	2	
	33	AVE46-193	Chutney Interlock Rod	1	
	34	AVE18-193	Rod Spring	3	
	35	AVE77-193	Chutney Jar(U)	1	
	36	AVE06-158	Cutter Base Packing	2	
	37	AVE24-193-W0	Jar Base A	2	
	38	AVE28-158	Seal Packing A	3	
	39	AVE92-158	Cutter Base(U)	3	
	40	AVF60-193	Washer C	3	Bake t=0.4
	41	AVF95-1251	Connector U(upper)	3	
	42	AVE09-193	Lid C	2	
	43	AVE22-158	Gasket C	2	
	44	AVF97-158	Mill Cutter assemble	1	
	45	AVF92-158	Shaft assembly	2	
	46	AVA35-193	Mill Cup Assembly	1	
	47	AVA37-193-W0	Handle Top Cover(S)	2	
	48	AVE75-193-W0	Handle Top Cover(U)	2	
	49	AVA40-193-W0	Mill Handle(S)	1	
	50	AVE51-193-W0	Mill Handle	1	
	51	AVE47-193	Mill Interlock Rod	1	
	52	AVE91-193	Mill Cup(U)	1	
	53	AVF96-158	Cutter assemble	1	
	54	AVA34-193	Blender Jar Assembly	1	
	55	AVA39-193-W0	Blender Handle(S)	1	
	56	AVE52-193-W0	Blender Handle	1	
	57	AVE48-193	Blender Interlock Rod	1	
	58	AVE26-193	Cutter Base Cover	1	
	59	AVE29-193	Cutter Base Packing B	1	
	60	AVE01-193	Blender Jar	1	
	61	AVF94-158	Whipping Plate(U)	1	
	62	AVE19-158	Spatula	1	



Safety	Ref. No.	Part No.	Part Name & Description	Pcs/ Set	Remarks
	A	XNG5B	M5 Nut (Left)	1	
	B	XWG5	φ 5 Washer (Plate Washer)	1	
	C	J18C60000	φ 8 Lock Washer	1	
	D	VJ03-125	Special Tapping Screw	4	
	F	XYN4+C10	Screw	1	
	G	XTN4+20B	Tapping Screw	11	
	H	AVJ06-158	Square Neck Bolt	12	
	I	XST4+8VW	Screw	2	
	J	XNG4BVW	M4 Nut	12	
	K	XTT4+12BVW	Truss Tapping Screw	1	

Safety	Ref. No.	Part No.	Part Name & Description	Pcs/ Set	Remarks
		AVZ01-193	Inner Carton	1	L=525mm×W=224mm×H=345mm
		AVZ03-193	Bottom Pad A	1	
		AVZ06-193	Bottom Pad B	1	
		AVZ02-193	Top Covering Pad A	1	
		AVZ07-193	Top Covering Pad B	1	
		AVZ04-193	Pad For Mill Cup	1	
		AVZ50-193	Operating Ins.	1	
		AVZ51-193	Warranty Card	1	
		AVZ57-193	Branch Address List	1	
		AVZ54-193	Recipe Book	1	

### 7.3. Parts Location (MX-AC220)



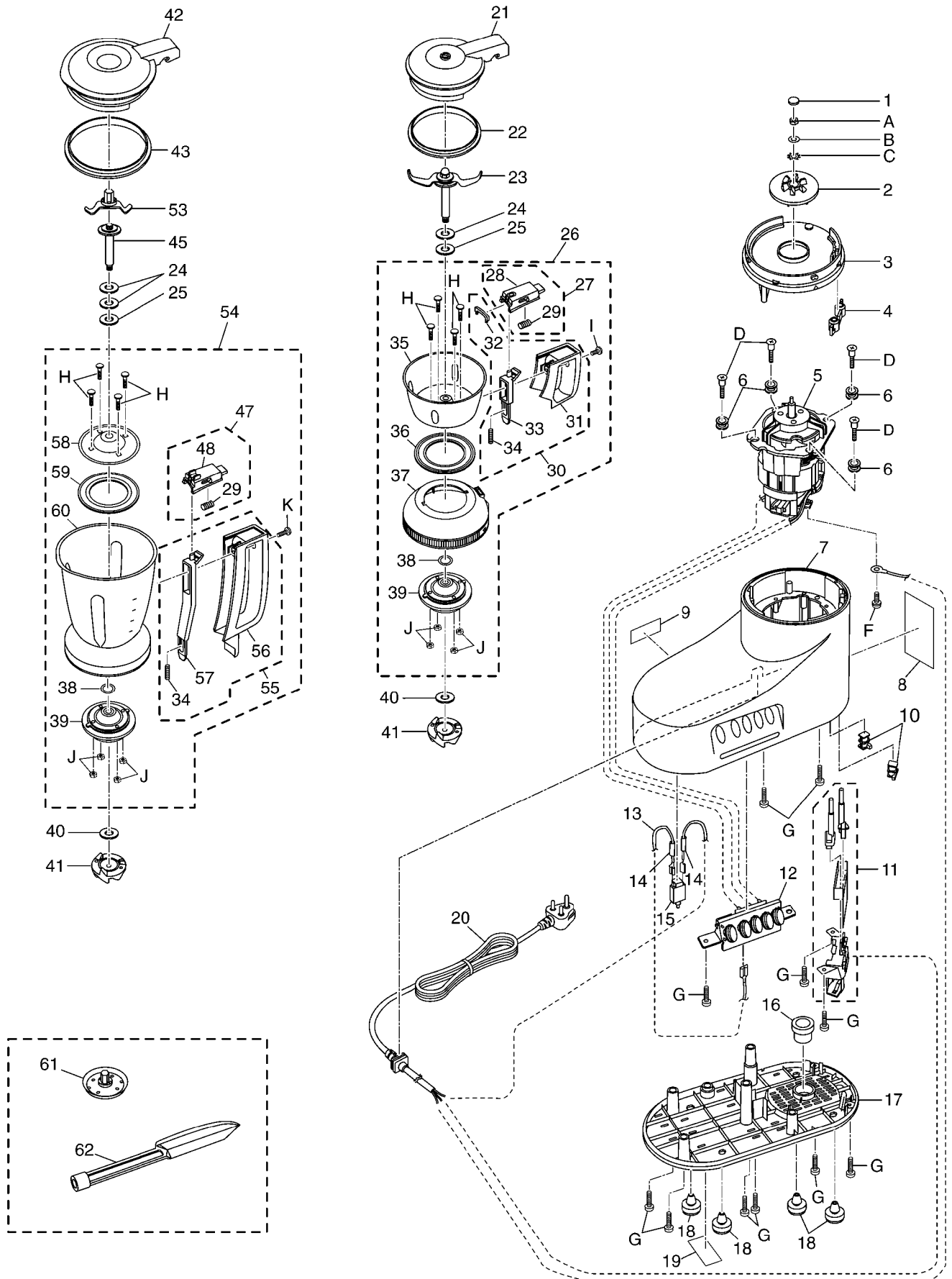
## 7.4. Replacement parts list (MX-AC220)

Safety	Ref. No.	Part No.	Part Name & Description	Pcs/ Set	Remarks
	1	AVB05-125	Rubber Cap	1	
	2	AVB99-1251	Connector U(lower)	1	
	3	AVB06-193-H0	Upper Body(Gray)	1	
	3	AVB06-193-A0	Upper Body(Blue)	1	
	4	AVB18-193	Seal Cap	1	
△	5	AVM99-193	Motor Complete	1	
	6	AVB12-125	Rubber Bush	4	
	7	AVB98-193	Body (U)	1	
	8	AVY03-193	Caution Label A	1	
	9	AVY02-151	Caution Label	1	
	10	AVB11-125	Tapping Boss	2	
△	11	AVN23-193	Switch Complete B	1	
△	12	AVN03-158	Switch Complete	1	
△	13	AVP97-193	Lead Wire A(U)	1	
	14	AVP02-125	Insulation Tube	2	
△	15	AVN07-125	Circuit Breaker	1	
	16	AVB04-158	Motor Cap	1	
	17	AVB02-193-H0	Bottom Plate(Gray)	1	
	17	AVB02-193-A0	Bottom Plate(Blue)	1	
	18	AVB03-125	Foot	4	
	19	AVY04-193	Name Plate	1	
△	20	AVP94-193	Power Cord(U)	1	
	21	AVF07-193	Lid A	1	
	22	AVE29-158	Gasket A	1	
	23	AVF93-158	Chutney Cutter assembly	1	
	24	AVF10-125	Washer B	2	Bake t=0.6
	25	AVF04-158	Spacer	2	Metal t=0.3
	26	AVA36-193	Chutney Jar Assembly	1	
	27	AVA38-193-W0	Handle Top Cover(S)	1	
	28	AVE76-193-W0	Handle Top Cover(U)	1	
	29	AVE35-193	Button Spring	2	
	30	AVA41-193-W0	Chutney Handle(S)	1	
	31	AVE21-193-W0	Chutney Handle	1	
	32	AVE39-193	Handle Seal	2	
	33	AVE46-193	Chutney Interlock Rod	1	
	34	AVE18-193	Rod Spring	2	
	35	AVE77-193	Chutney Jar (U)	1	
	36	AVE06-158	Cutter Base Packing	2	
	37	AVE24-193-W0	Jar Base A	2	
	38	AVE28-158	Seal Packing A	2	
	39	AVE92-158	Cutter Base(U)	2	
	40	AVF60-193	Washer C	2	Bake t=0.4
	41	AVF95-1251	Connector U(upper)	2	
	42	AVE09-193	Lid C	1	
	43	AVE22-158	Gasket C	1	
	44	AVF97-158	Mill Cutter assemble	1	
	45	AVF92-158	Shaft assembly	1	
	46	AVA35-193	Mill Cup Assembly	1	
	47	AVA37-193-W0	Handle Top Cover(S)	1	
	48	AVE75-193-W0	Handle Top Cover(U)	1	
	49	AVA40-193-W0	Mill Handle(S)	1	
	50	AVE51-193-W0	Mill Handle	1	
	51	AVE47-193	Mill Interlock Rod	1	
	52	AVE91-193	Mill Cup(U)	1	
	61	AVF94-158	Whipping Plate(U)	1	
	62	AVE19-158	Spatula	1	

Safety	Ref. No.	Part No.	Part Name & Description	Pcs/ Set	Remarks
	A	XNG5B	M5 Nut(Left)	1	
	B	XWG5	φ 5 Washer(Plate Washer)	1	
	C	J18C60000	φ 8 Lock Washer	1	
	D	VJ03-125	Special Tapping Screw	4	
	F	XYN4+C10	Screw	1	
	G	XTN4+20B	Tapping Screw	11	
	H	AVJ06-158	Square Neck Bolt	8	
	I	XST4+8VW	Screw	2	
	J	XNG4BVW	M4 Nut	8	

Safety	Ref. No.	Part No.	Part Name & Description	Pcs/ Set	Remarks
		AVZ01-195	Inner Carton	1	L=363mm×W=228mm×H=350mm
		AVZ03-193	Bottom Pad A	1	
		AVZ02-193	Top Covering Pad A	1	
		AVZ04-193	Pad For Mill Cup	1	
		AVZ50-193	Operating Ins.	1	
		AVZ51-193	Warranty Card	1	
		AVZ57-193	Branch Address List	1	
		AVZ54-193	Recipe Book	1	

## 7.5. Parts Location (MX-AC210)



## 7.6. Replacement parts list (MX-AC210)

Safety	Ref. No.	Part No.	Part Name & Description	Pcs/ Set	Remarks
	1	AVB05-125	Rubber Cap	1	
	2	AVB99-1251	Connector U(lower)	1	
	3	AVB06-193-H0	Upper Body(Gray)	1	
	3	AVB06-193-A0	Upper Body(Blue)	1	
	4	AVB18-193	Seal Cap	1	
⚠	5	AVM99-193	Motor Complete	1	
	6	AVB12-125	Rubber Bush	4	
	7	AVB98-193	Body (U)	1	
	8	AVY03-193	Caution Label A	1	
	9	AVY02-151	Caution Label	1	
	10	AVB11-125	Tapping Boss	2	
⚠	11	AVN23-193	Switch Complete B	1	
⚠	12	AVN03-158	Switch Complete	1	
⚠	13	AVP97-193	Lead Wire A(U)	1	
	14	AVP02-125	Insulation Tube	2	
⚠	15	AVN07-125	Circuit Breaker	1	
	16	AVB04-158	Motor Cap	1	
	17	AVB02-193-H0	Bottom Plate(Gray)	1	
	17	AVB02-193-A0	Bottom Plate(Blue)	1	
	18	AVB03-125	Foot	4	
	19	AVY04-193	Name Plate	1	
⚠	20	AVP94-193	Power Cord(U)	1	
	21	AVF07-193	Lid A	1	
	22	AVE29-158	Gasket A	1	
	23	AVF93-158	Chutney Cutter assembly	1	
	24	AVF10-125	Washer B	3	Bake t=0.6
	25	AVF04-158	Spacer	2	Metal t=0.3
	26	AVA36-193	Chutney Jar Assembly	1	
	27	AVA38-193-W0	Handle Top Cover(S)	1	
	28	AVE76-193-W0	Handle Top Cover(U)	1	
	29	AVE35-193	Button Spring	2	
	30	AVA41-193-W0	Chutney Handle(S)	1	
	31	AVE21-193-W0	Chutney Handle	1	
	32	AVE39-193	Handle Seal	1	
	33	AVE46-193	Chutney Interlock Rod	1	
	34	AVE18-193	Rod Spring	2	
	35	AVE77-193	Chutney Jar(U)	1	
	36	AVE06-158	Cutter Base Packing	1	
	37	AVE24-193-W0	Jar Base A	1	
	38	AVE28-158	Seal Packing A	2	
	39	AVE92-158	Cutter Base(U)	2	
	40	AVF60-193	Washer C	2	Bake t=0.4
	41	AVF95-1251	Connector U(upper)	2	
	42	AVE09-193	Lid C	1	
	43	AVE22-158	Gasket C	1	
	45	AVF92-158	Shaft assembly	1	
	47	AVA37-193-W0	Handle Top Cover(S)	1	
	48	AVE75-193-W0	Handle Top Cover(U)	1	
	53	AVF96-158	Cutter assemble	1	
	54	AVA34-193	Blender Jar Assembly	1	
	55	AVA39-193-W0	Blender Handle(S)	1	
	56	AVE52-193-W0	Blender Handle	1	
	57	AVE48-193	Blender Interlock Rod	1	
	58	AVE26-193	Cutter Base Cover	1	
	59	AVE29-193	Cutter Base Packing B	1	
	60	AVE01-193	Blender Jar	1	
	61	AVF94-158	Whipping Plate(U)	1	
	62	AVE19-158	Spatula	1	

Safety	Ref. No.	Part No.	Part Name & Description	Pcs/ Set	Remarks
	A	XNG5B	M5 Nut (Left)	1	
	B	XWG5	φ 5 Washer (Plate Washer)	1	
	C	J18C60000	φ 8 Lock Washer	1	
	D	VJ03-125	Special Tapping Screw	4	
	F	XYN4+C10	Screw	1	
	G	XTN4+20B	Tapping Screw	11	
	H	AVJ06-158	Square Neck Bolt	8	
	I	XST4+8VW	Screw	1	
	J	XNG4BVW	M4 Nut	8	
	K	XTT4+12BVW	Truss Tapping Screw	1	

Safety	Ref. No.	Part No.	Part Name & Description	Pcs/ Set	Remarks
		AVZ01-194	Inner Carton	1	L=363mm×W=228mm×H=382mm
		AVZ03-193	Bottom Pad A	1	
		AVZ02-193	Top Covering Pad A	1	
		AVZ04-193	Pad For Mill Cup	1	
		AVZ08-194	Adjustment Pad	1	
		AVZ50-193	Operating Ins.	1	
		AVZ51-193	Warranty Card	1	
		AVZ57-193	Branch Address List	1	
		AVZ54-193	Recipe Book	1	

## 7.7. Packing Procedure

[MX-AC300]

