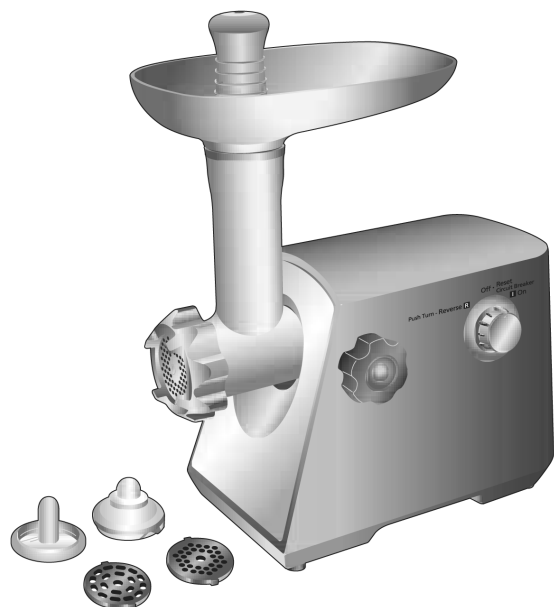


Service Manual

Meat Grinder

Model No. **MK-MG1560WTN**



Destination : PGF

⚠ WARNING

This service information is designed for experienced repair technicians only and is not designed for use by the general public. It does not contain warnings or cautions to advise non-technical individuals of potential dangers in attempting to service a product. Products powered by electricity should be serviced or repaired only by experienced professional technicians. Any attempt to service or repair the product or products dealt with in this service information by anyone else could result in serious injury or death.

IMPORTANT SAFETY NOTICE

There are special components used in this equipment which are important for safety. These parts are marked by ⚠ in the Schematic Diagrams, Circuit Board Diagrams, Exploded Views and Replacement Parts List. It is essential that these critical parts should be replaced with manufacturer's specified parts to prevent shock, fire or other hazards. Do not modify the original design without permission of manufacturer.

TABLE OF CONTENTS

	PAGE		PAGE
1 PRECAUTIONS (Strictly follow these instructions.) -----	3	6 Troubleshooting Guide -----	8
2 Specifications -----	3	6.1. SYMPTOM : A.C. motor interrupted when feeding meat (overloaded).-----	8
3 Schematic Diagram -----	3	6.2. SYMPTOM : Switch turned on, but A.C. motor failure to start.-----	8
4 Basic Wiring Diagram -----	4	6.3. SYMPTOM : A.C. motor running, but feed screw failure to turn.-----	8
5 Disassembly and Assembly Instruction -----	5	6.4. SYMPTOM : A.C. motor running too noisy and meat grinding too slow.-----	8
5.1. Disassembly of Motor Housing-----	5		
5.2. Disassembly of Motor Set-----	6		
5.3. Disassembly of Switch Knob-----	6		
5.4. Disassembly of Gear Box-----	7		

6.5. SYMPTOM : A.C. motor running noise unusual.-----	8
6.6. SYMPTOM : Smell of burning from A.C. motor.-----	8
7 Exploded View and Replacement Parts List -----	9
7.1. Exploded View -----	9
7.2. Packing Instruction-----	10
7.3. Replacement Parts List-----	11

1 PRECAUTIONS (Strictly follow these instructions.)

CAUTION

Do not grind too hard meat. If the grinder gets stuck, do not force meat into it.

CAUTION

You may feel the feed screw vibrating during use. It is not a trouble. Do not over tighten the locking knob.

CAUTION

Keep in mind that some parts of the grinder cannot be washed in a dishwasher.

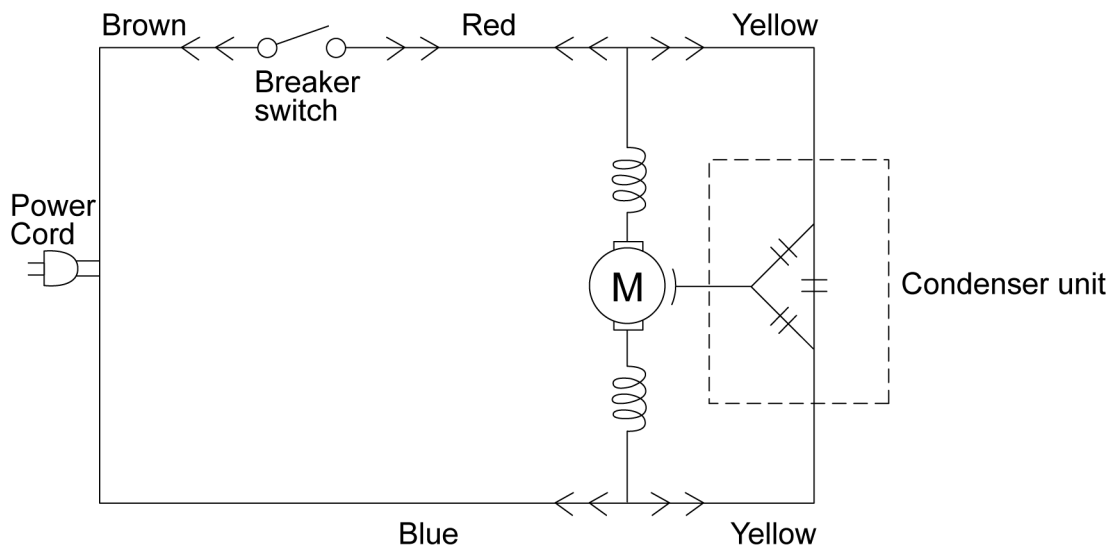
CAUTION

This meat grinder is for household use only.

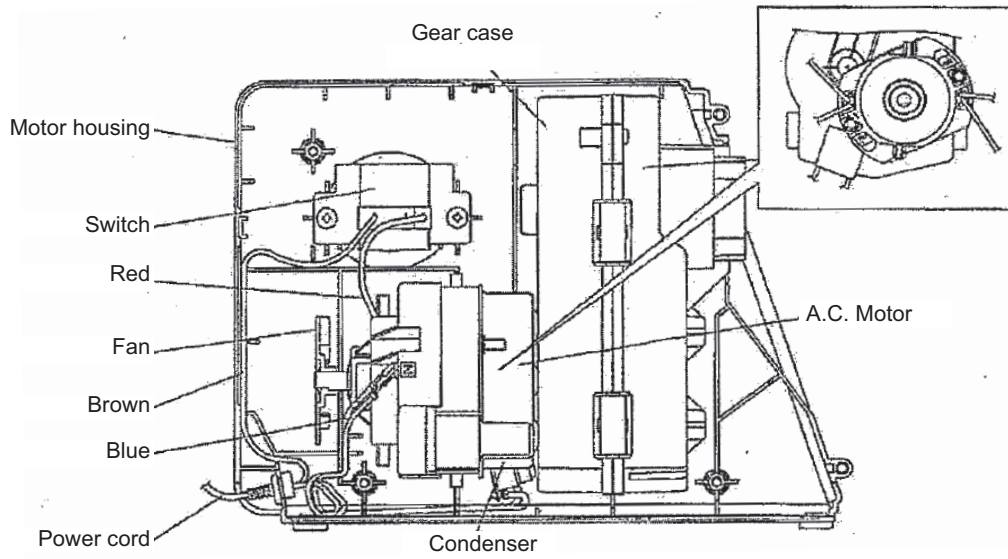
2 Specifications

Destination	PGF
Model	MK-MG1560WTN
Power Source	AC220V~240V~50/60Hz
Motor Power	240W~260W
Protective Device	Circuit Breaker AC250 V 1.6 A (4.5s - 7.0s)
Type of Switch	Rotary Switch
Power Cord Length	0.9 m
Hopper Material	Aluminium
Dimensions (WXDXH)	155mm X 276mm X 214mm
Weight (approx.)	3.8kg
Meat Grinding (Middle Gring Cutter)	Beef 1200 g/min, Mutton 800 g/min
Cutter Type	Rough Grind 0 (Hole 7 x 16 pcs), Middle Grind 0 (Hole 5 x 30 pcs), Fine Grind 0 (Hole 3 x 78 pcs)
Kubbe Attachments	Yes

3 Schematic Diagram



4 Basic Wiring Diagram

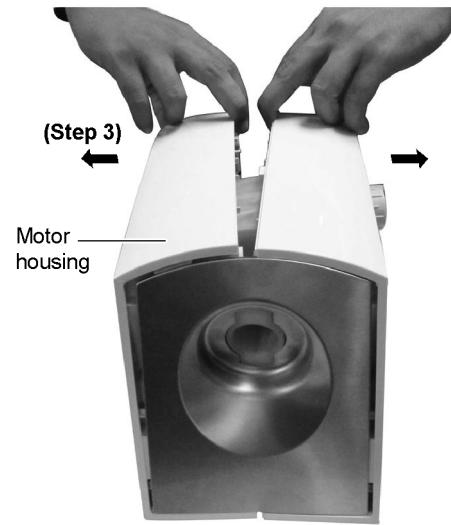
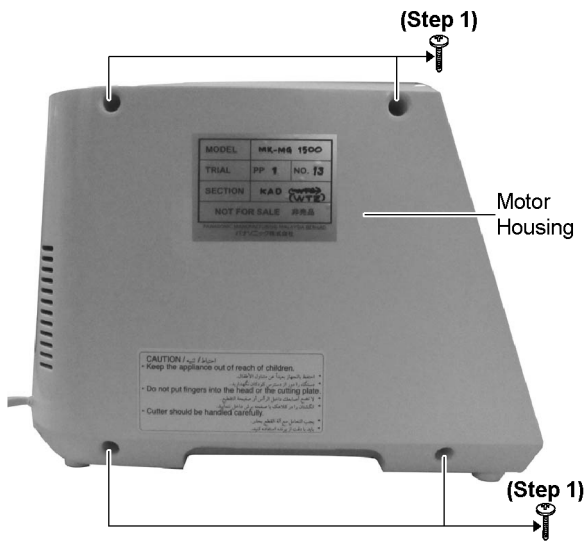


5 Disassembly and Assembly Instruction

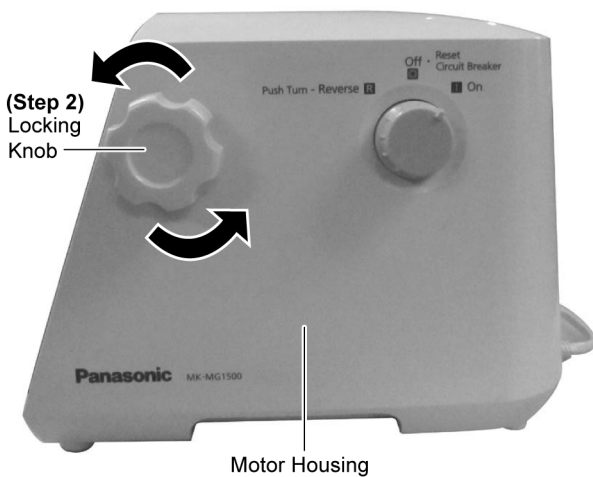
5.1. Disassembly of Motor Housing

Step 3 Open Motor Housing.

Step 1 Remove 4 screws.

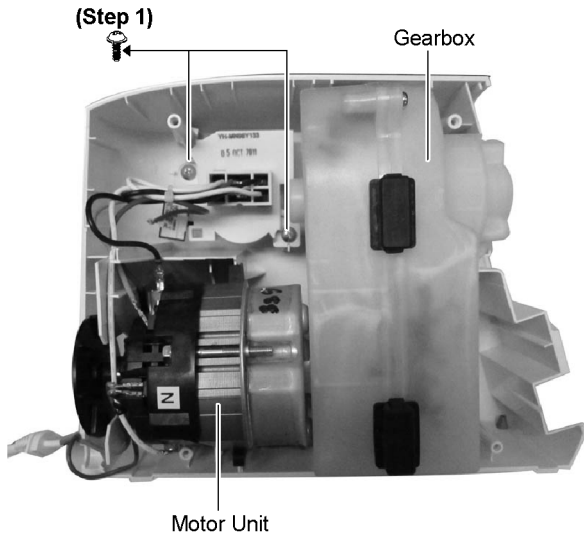


Step 2 Remove Locking Knob.

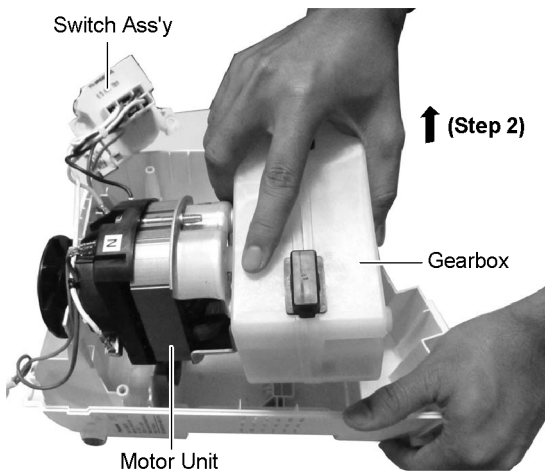


5.2. Disassembly of Motor Set

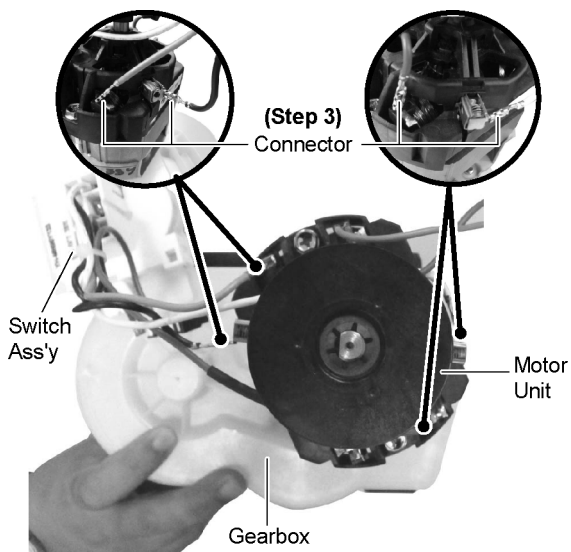
Step 1 Remove 2 screws.



Step 2 Pull up Gear box.

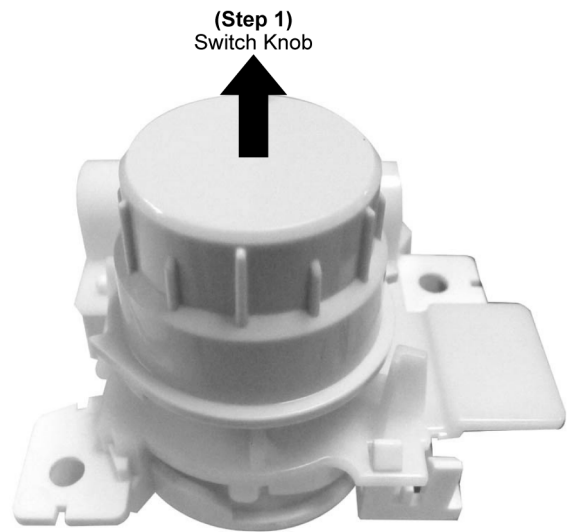


Step 3 Detach Connector from Motor Unit.



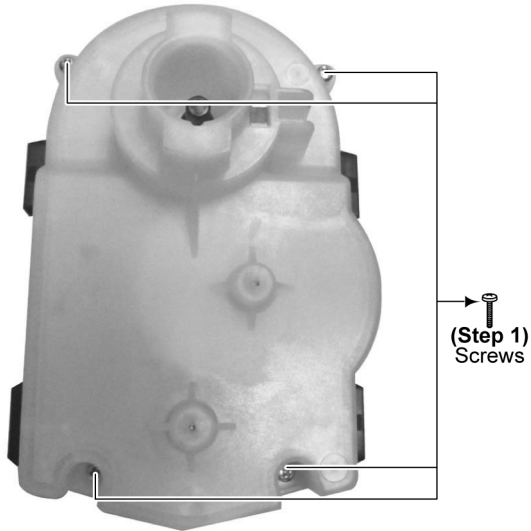
5.3. Disassembly of Switch Knob

Step 1 Remove Switch Knob.

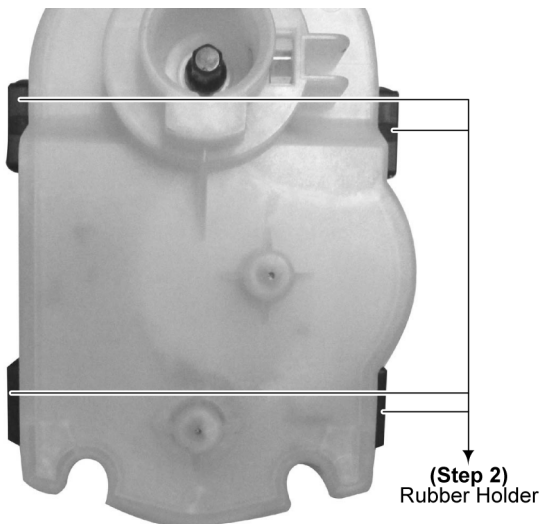


5.4. Disassembly of Gear Box

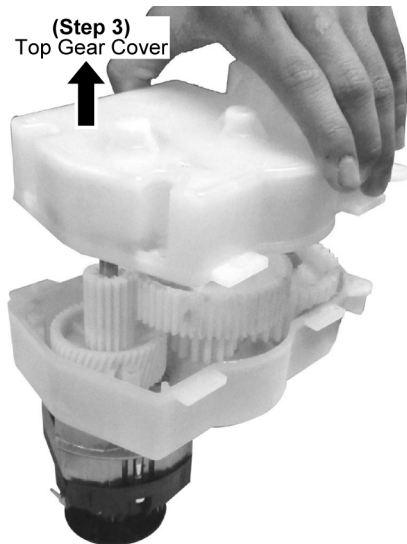
Step 1 Remove 4 screws.



Step 2 Release 4 Rubber Holders.

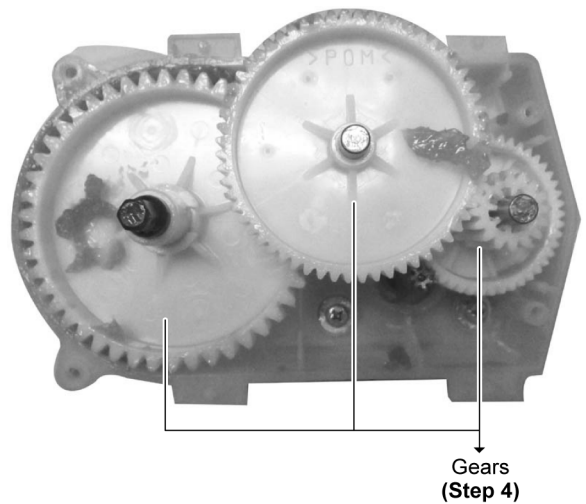


Step 3 Remove Top Gear Cover.



Step 4 Remove Gears

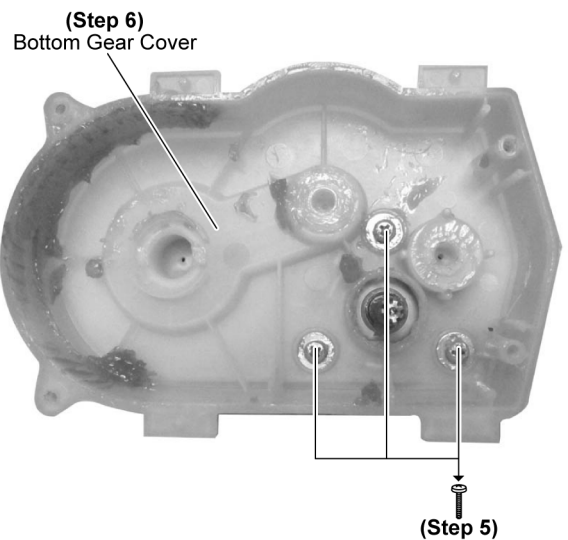
Caution: Wear Glove when take out Gears



Step 5 Remove 3 Screws.

Step 6 Remove Bottom Gear Cover.

Caution: During assembling, ensure that all Gears have been Grease.



6 Troubleshooting Guide

6.1. SYMPTOM : A.C. motor interrupted when feeding meat (overloaded).

Causes	Remedy
Too hard meat being fed.	Take out the hard meat.
Too much meat being fed at once.	Reduce the meat feed rate.
Used for too long continuously.	Follow the specified operating time.
Circuit breaker activated.	Switch off and on again to reset the breaker.

6.2. SYMPTOM : Switch turned on, but A.C. motor failure to start.

Causes	Remedy
Power cord broken.	Replace the power cord.
Lead wire terminal in poor contact.	Repair or replace the lead wire terminal.
Switch in poor contact.	Replace the switch.
Carbon brush worn out.	Replace the carbon brush.
A.C. motor coil broken.	Replace the A.C. motor.

6.3. SYMPTOM : A.C. motor running, but feed screw failure to turn.

Causes	Remedy
Gears worn out.	Replace the gears.
Gears damaged.	Replace the gears.
Feed screw worn out.	Replace the feed screw.
Feed screw damaged.	Replace the feed screw.

6.4. SYMPTOM : A.C. motor running too noisy and meat grinding too slow.

Causes	Remedy
Carbon brush worn out.	Replace the carbon brush.
Gears worn out or damaged.	Replace the gears.
Cutting blade or cutting plate worn out.	Replace the cutting blade or cutting plate.

6.5. SYMPTOM : A.C. motor running noise unusual.

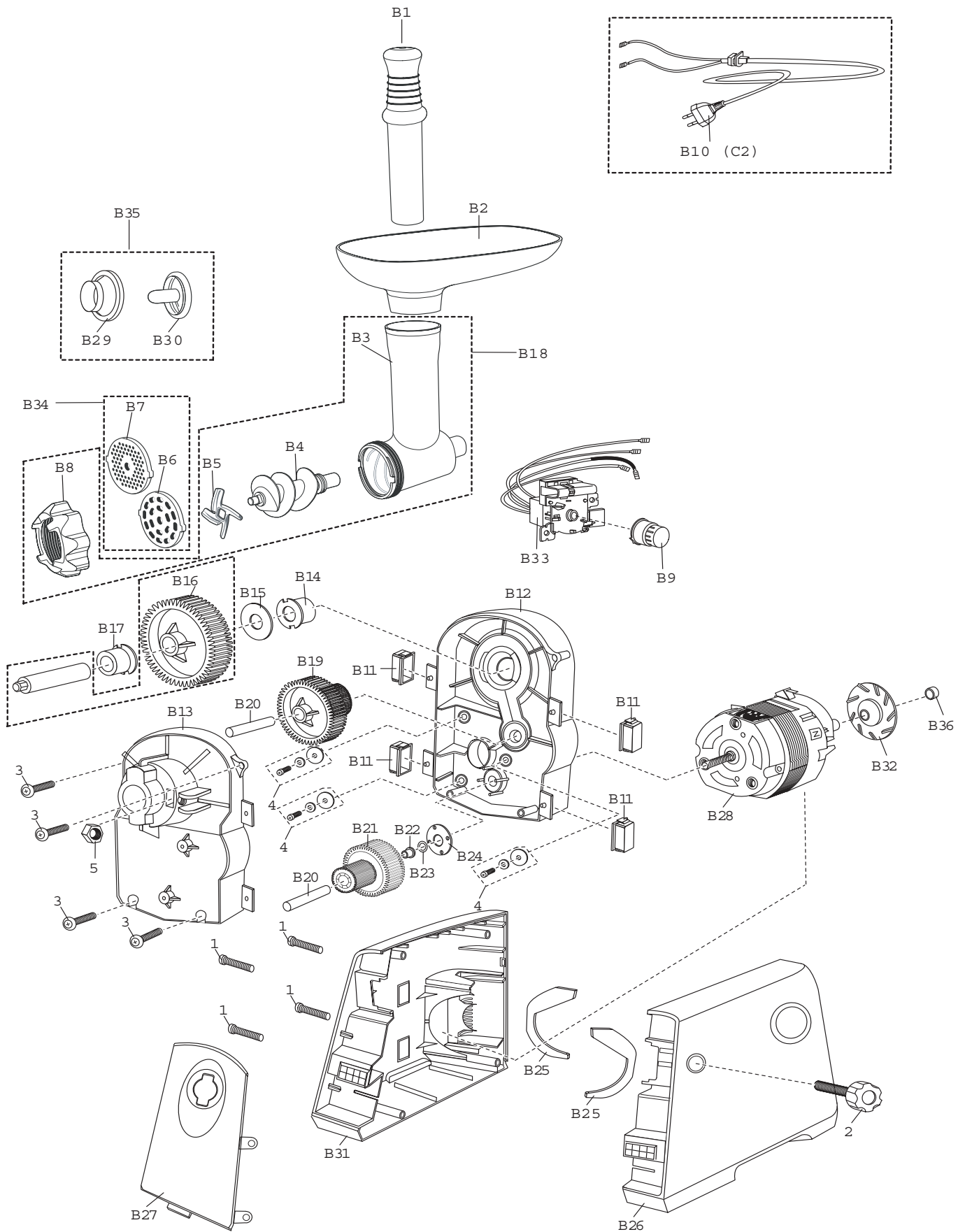
Causes	Remedy
Foreign matter caught in gears.	Take out the foreign matter.
Gears worn out or damaged.	Replace the gears.

6.6. SYMPTOM : Smell of burning from A.C. motor.

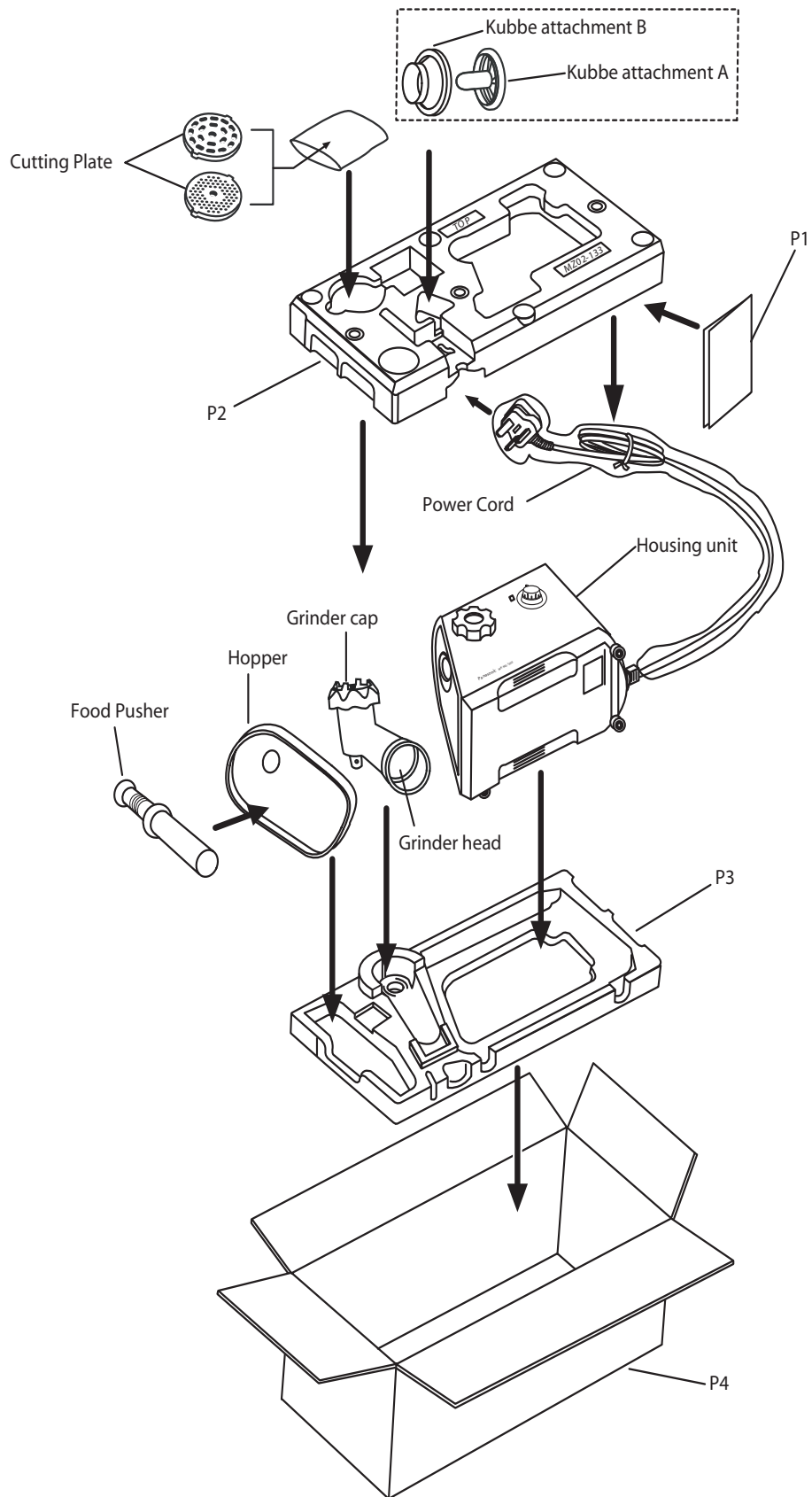
Causes	Remedy
A.C. motor insulation degraded.	Replace the A.C. motor.

7 Exploded View and Replacement Parts List

7.1. Exploded View



7.2. Packing Instruction



7.3. Replacement Parts List

Safety	Ref. No.	Part No.	Part Name & Description	Qty	Remarks
	B1	AME04-1072W0	PLUNGER	1	
	B2	AME03-133-CA	HOPPER	1	ALUMINIUM
	B3	AME01-121	SCREW BODY	1	
	B4	AM98C18000	SCREW (U)	1	
	B5	AM12C18000	ROTATING CUTTER	1	
	B6	AM08C18100	CUTTER A	1	
	B7	AM10C18100	CUTTER C	1	
	B8	AME02-121	BODY COVER	1	
	B9	AMN99-133-W4	ROTARY KNOB UNIT	1	
⚠	B10	AMP96Y133-WZ	CORD UNIT	1	C2 PLUG
	B11	AMB34-133	GEAR CUSHION RUBBER	4	
	B12	AMB26-1103	GEAR CASE	1	
	B13	AMB89-1102	GEAR CASE COVER UNIT	1	
	B14	AM04B18100	OILLESS BEARING A	1	
	B15	AM18B18000	WASHER B	1	
	B16	AMH99-110	C GEAR UNIT	1	
	B17	AM05B18100	OILLESS BEARING B	1	
	B18	AMA32-121	COMPLETE SCREW BODY	1	
	B19	AMH02-110	B GEAR	1	
	B20	AMH61-110	A GEAR SHAFT	2	
	B21	AMH97-110	A GEAR UNIT	1	
	B22	M06B18000	OILLESS BEARING C	1	
	B23	AM36B18100	WASHER C	1	
	B24	AMH53-133	WASHER D	1	
	B25	AMB35-133	MOTOR CUSHION RUBBER	2	
	B26	AMB91Y136-W4	BODY LEFT UNIT	1	
	B27	AMB21-133	FRONT PLATE	1	
	B28	ATXM131Y	MOTOR	1	
	B29	AM24C27300	KUBBE COVER	1	
	B30	AM96C27300	KUBBE UNIT	1	
	B31	AMB19-133-W4	BODY RIGHT	1	
	B32	AMM31-1101K0	FAN	1	
⚠	B33	AMN98Y133-W4	REVERSE SWITCH ASSY	1	
	B34	AMA20-121	FIXED CUTTER COMPLETE	1	
	B35	AM24Q27300	KUBBE COMPLETE	1	
	B36	ASPN-9012	PUSH NUT	1	
	1	XTN4+20BFJ	SCREW	4	
	2	AMB85-133-W4	FIX KNOB UNIT	1	
	3	XTN4+20BFJ	PLUS TAPPING SCREW	4	
	4	XYN4+20BFJ	SCREW WITH SPRING AND ROUND WASHER	3	
	5	XNG8BFJ	HEXAGONAL NUT	1	
			PACKING LIST		
⚠	P1	AMZ50Y133	OPERATING INSTRUCTION	1	
	P2	AMZ02-133	TOP CUSHION	1	
	P3	AMZ03-133	BOTTOM CUSHION	1	
	P4	AMZ01Y136	CARTON BOX	1	

MMH1207