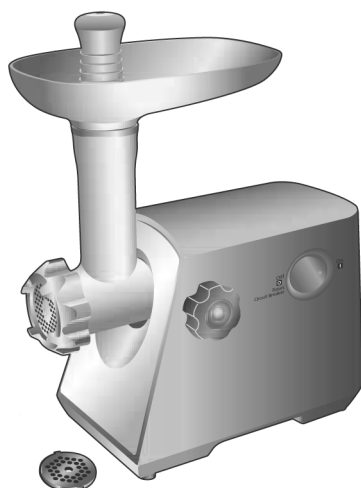


Service Manual

Meat Grinder

Model No. **MK-MG1000WTN**
MK-MG1000WTZ
MK-MG1000WTQ



MK-MG1000WTN (QATAR, ETC)
 MK-MG1000WTZ (UAE, SAUDI, KUWAIT)
 MK-MG1000WTQ (RUSSIA, UKRAINE, ETC)

⚠ WARNING

This service information is designed for experienced repair technicians only and is not designed for use by the general public. It does not contain warnings or cautions to advise non-technical individuals of potential dangers in attempting to service a product. Products powered by electricity should be serviced or repaired only by experienced professional technicians. Any attempt to service or repair the product or products dealt with in this service information by anyone else could result in serious injury or death.

IMPORTANT SAFETY NOTICE

There are special components used in this equipment which are important for safety. These parts are marked by ⚠ in the Schematic Diagrams, Circuit Board Diagrams, Exploded Views and Replacement Parts List. It is essential that these critical parts should be replaced with manufacturer's specified parts to prevent shock, fire or other hazards. Do not modify the original design without permission of manufacturer.

TABLE OF CONTENTS

	PAGE		PAGE
1 PRECAUTIONS (Strictly follow these instructions.) -----	2	6.4. SYMPTOM : A.C. motor running too noisy and meat grinding too slow. -----	7
2 Specifications -----	2	6.5. SYMPTOM : A.C. motor running noise unusual. -----	7
3 Schematic Diagram -----	2	6.6. SYMPTOM : Smell of burning from A.C. motor. -----	7
4 Basic Wiring Diagram -----	3	7 Exploded View and Replacement Parts List -----	8
5 Disassembly and Assembly Instruction -----	4	7.1. Exploded View -----	8
5.1. Disassembly of Motor Housing-----	4	7.2. Packaging Instruction -----	9
5.2. Disassembly of Motor Set & Gear Box-----	5	7.3. Replacement Parts List-----	10
5.3. Disassembly of Switch -----	6		
6 Troubleshooting Guide -----	7		
6.1. SYMPTOM : A.C. motor interrupted when feeding meat (overloaded). -----	7		
6.2. SYMPTOM : Switch turned on, but A.C. motor failure to start. -----	7		
6.3. SYMPTOM : A.C. motor running, but feed screw failure to turn. -----	7		

Panasonic®

© 2011 Panasonic Manufacturing Malaysia Berhad (6100-K). Unauthorized copying and distribution is a violation of law.

1 PRECAUTIONS (Strictly follow these instructions.)

CAUTION

Do not grind too hard meat. If the grinder gets stuck, do not force meat into it.

CAUTION

You may feel the feed screw vibrating during use. It is not a trouble. Do not over tighten the locking knob.

CAUTION

Keep in mind that some parts of the grinder cannot be washed in a dishwasher.

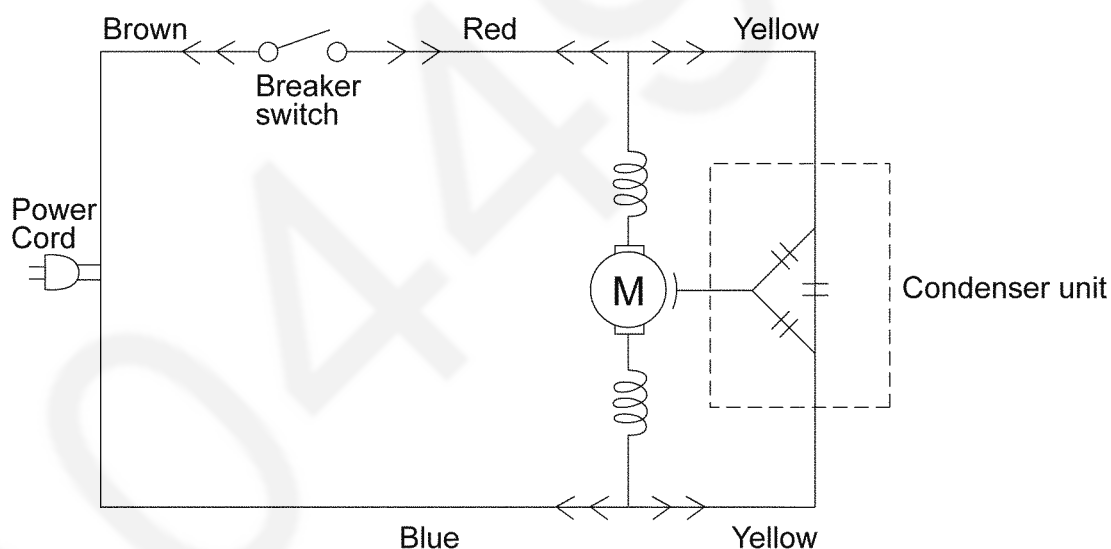
CAUTION

This meat grinder is for household use only.

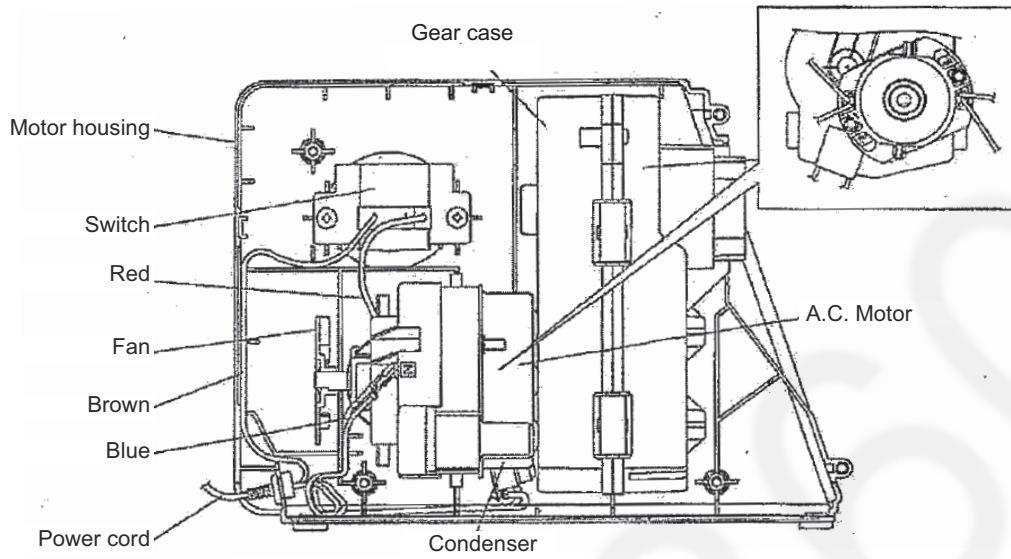
2 Specifications

Destination	Qatar, ETC	Saudi, Kuwait, UAE	Russia, Ukraine, Etc
Model	MK-MG1000WTN	MK-MG1000WTZ	MK-MG1000WTQ
Power Source	AC220V~240V 50/60Hz		
Motor Power	200W - 220W		
Protective Device	CIRCUIT BREAKER AC250V 1.6A (4.5s - 7.0s)		
Type of Switch	THUMBLER SWITCH		
Power Cord Length	0.9 m		
Hopper Material	Aluminium		
Dimensions (WXDXH)	155mm X 255mm X 214mm		
Weight (approx.)	3.0kg		
Meat Grinding (Middle Grind Cutter)	BEEF 800 g/min, MUTTON 500 g/min		
Cutter Type	Middle Grind 0 (Hole 5 x 30 pcs), Fine Grind 0 (Hole 3 x 78 pcs)		

3 Schematic Diagram



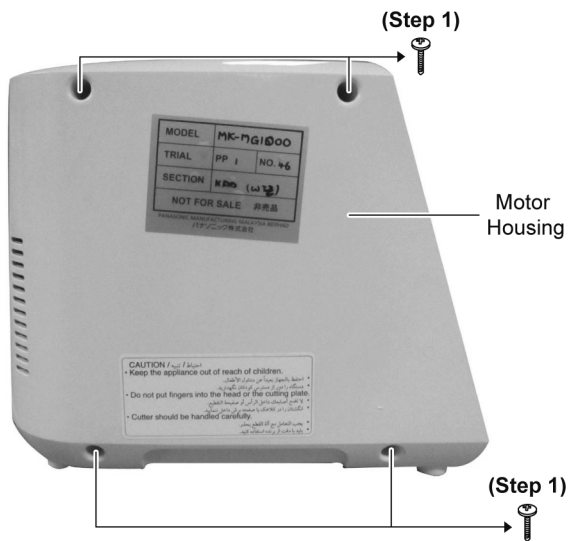
4 Basic Wiring Diagram



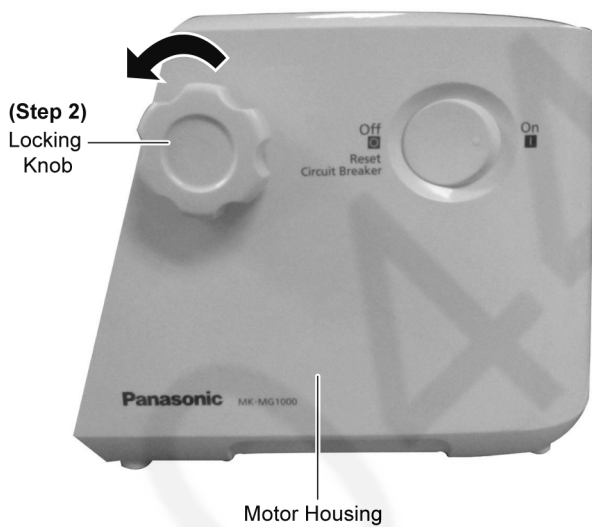
5 Disassembly and Assembly Instruction

5.1. Disassembly of Motor Housing

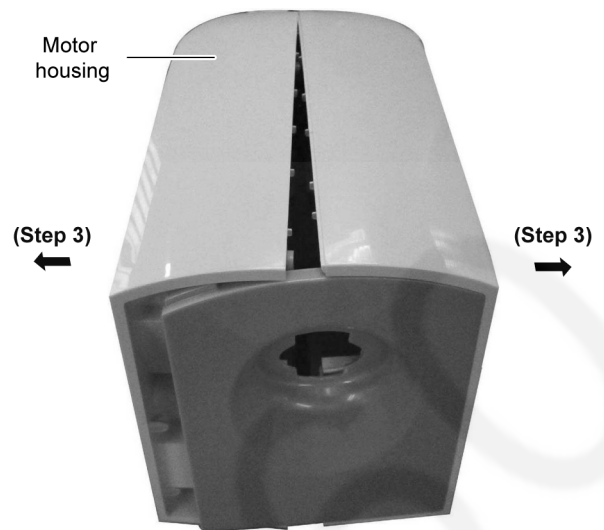
Step 1 Remove 4 screws.



Step 2 Remove Locking Knob.

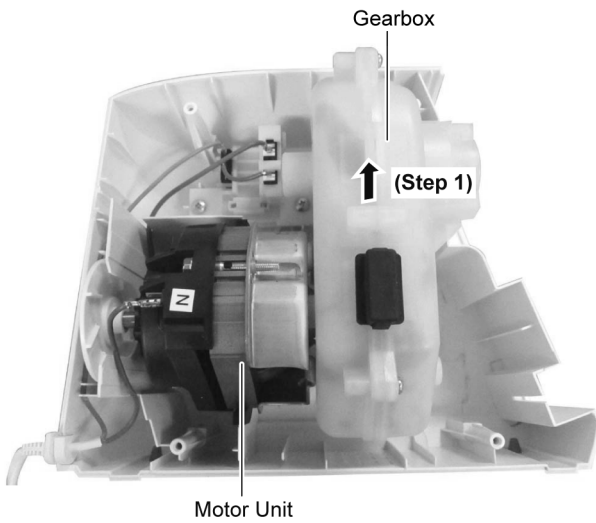


Step 3 Open Motor Housing.

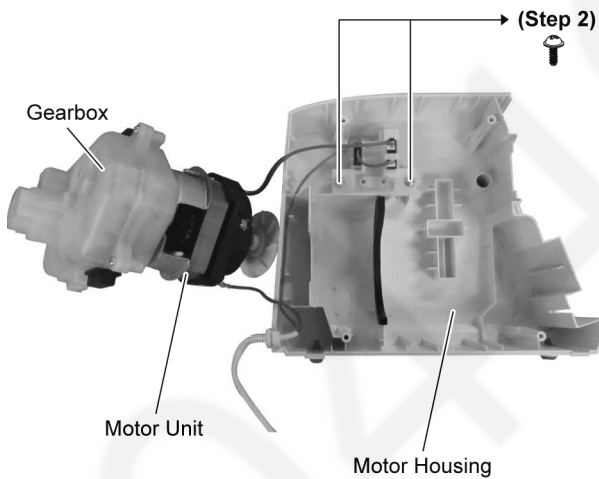


5.2. Disassembly of Motor Set & Gear Box

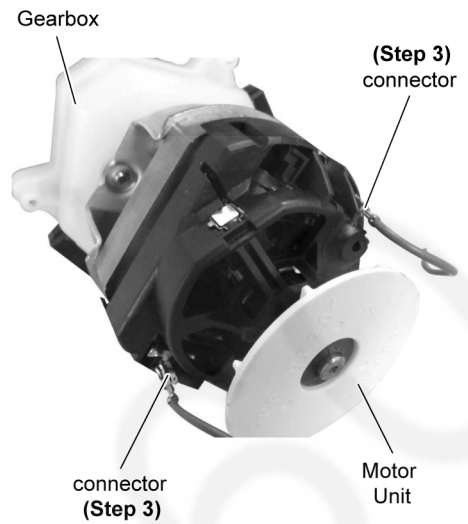
Step 1 Pull up Gear box.



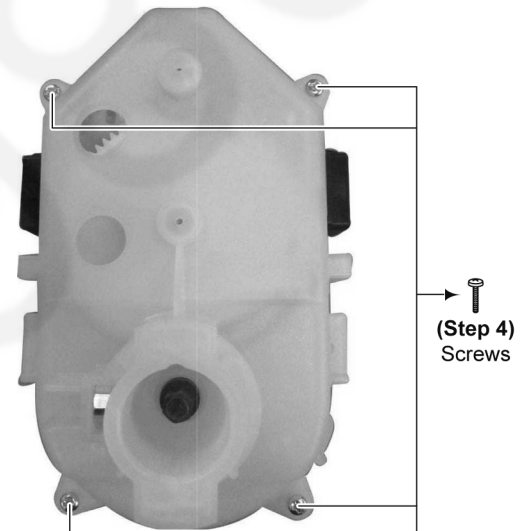
Step 2 Place the Motor Unit as shown in diagram to remove 2 screws.



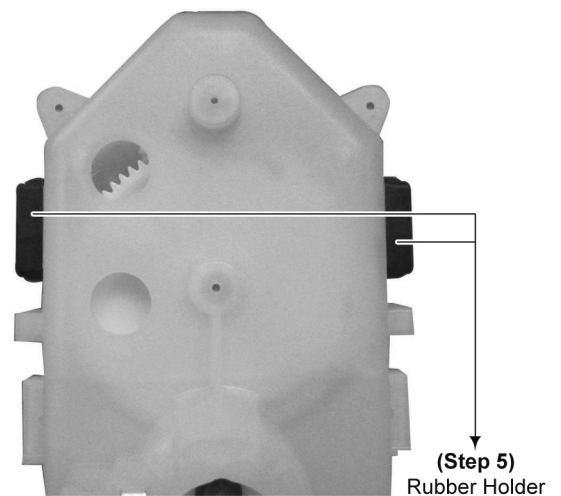
Step 3 Detach connectors from Motor Unit.



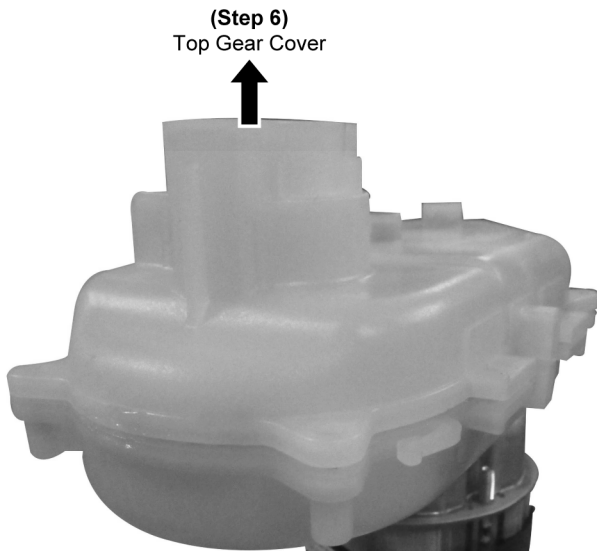
Step 4 Remove 4 screws.



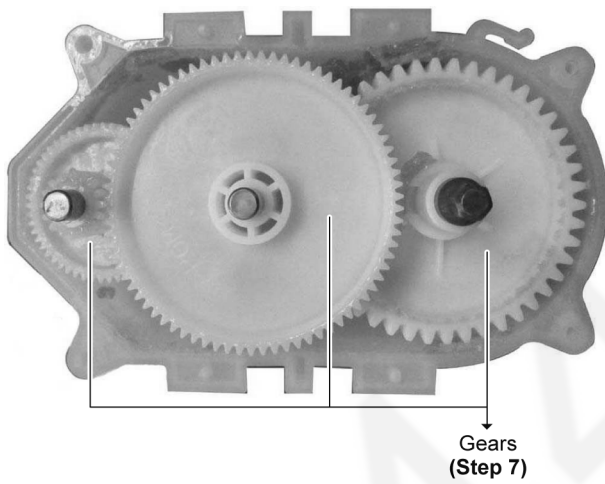
Step 5 Release 2 Rubber Holders.



Step 6 Remove Top Gear Cover.

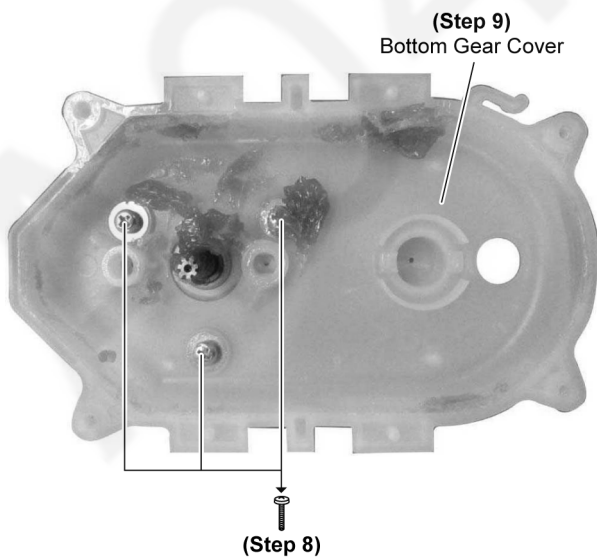


Step 7 Remove Gears



Step 8 Remove 3 screws.

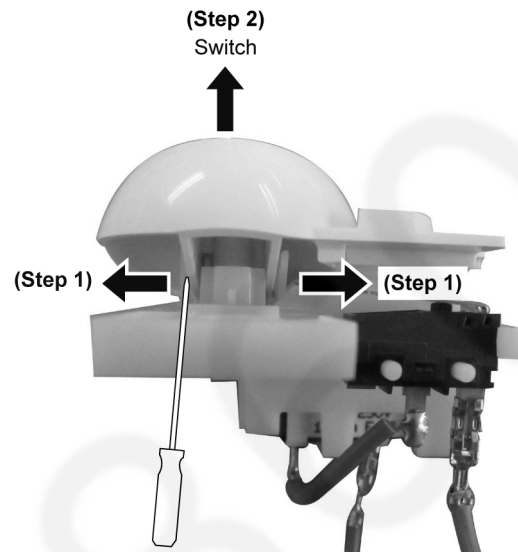
Step 9 Remove Bottom Gear Cover.



5.3. Disassembly of Switch

Step 1 Use small screwdriver to push out the catch as diagram shown.

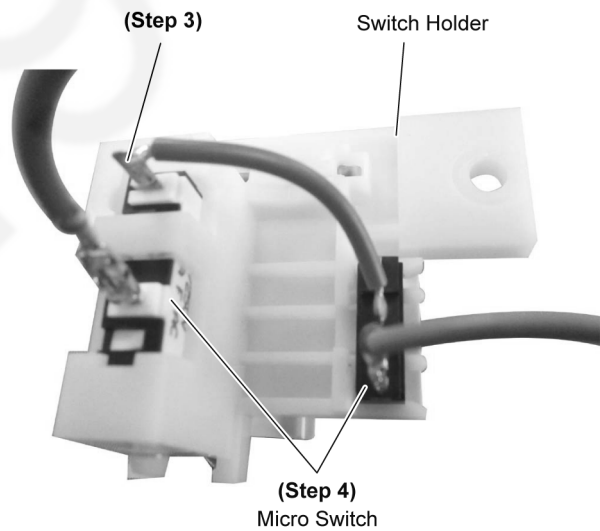
Step 2 Remove Switch.



Step 3 Desolder the pin to detach wire.

Step 4 Remove Micro Switch.

Caution When removing Micro Switch, please take note of the catches.



6 Troubleshooting Guide

6.1. SYMPTOM : A.C. motor interrupted when feeding meat (overloaded).

Causes	Remedy
Too hard meat being fed.	Take out the hard meat.
Too much meat being fed at once.	Reduce the meat feed rate.
Used for too long continuously.	Follow the specified operating time.
Circuit breaker activated.	Switch off and on again to reset the breaker.

6.2. SYMPTOM : Switch turned on, but A.C. motor failure to start.

Causes	Remedy
Power cord broken.	Replace the power cord.
Lead wire terminal in poor contact.	Repair or replace the lead wire terminal.
Switch in poor contact.	Replace the switch.
Carbon brush worn out.	Replace the carbon brush.
A.C. motor coil broken.	Replace the A.C. motor.

6.3. SYMPTOM : A.C. motor running, but feed screw failure to turn.

Causes	Remedy
Gears worn out.	Replace the gears.
Gears damaged.	Replace the gears.
Feed screw worn out.	Replace the feed screw.
Feed screw damaged.	Replace the feed screw.

6.4. SYMPTOM : A.C. motor running too noisy and meat grinding too slow.

Causes	Remedy
Carbon brush worn out.	Replace the carbon brush.
Gears worn out or damaged.	Replace the gears.
Cutting blade or cutting plate worn out.	Replace the cutting blade or cutting plate.

6.5. SYMPTOM : A.C. motor running noise unusual.

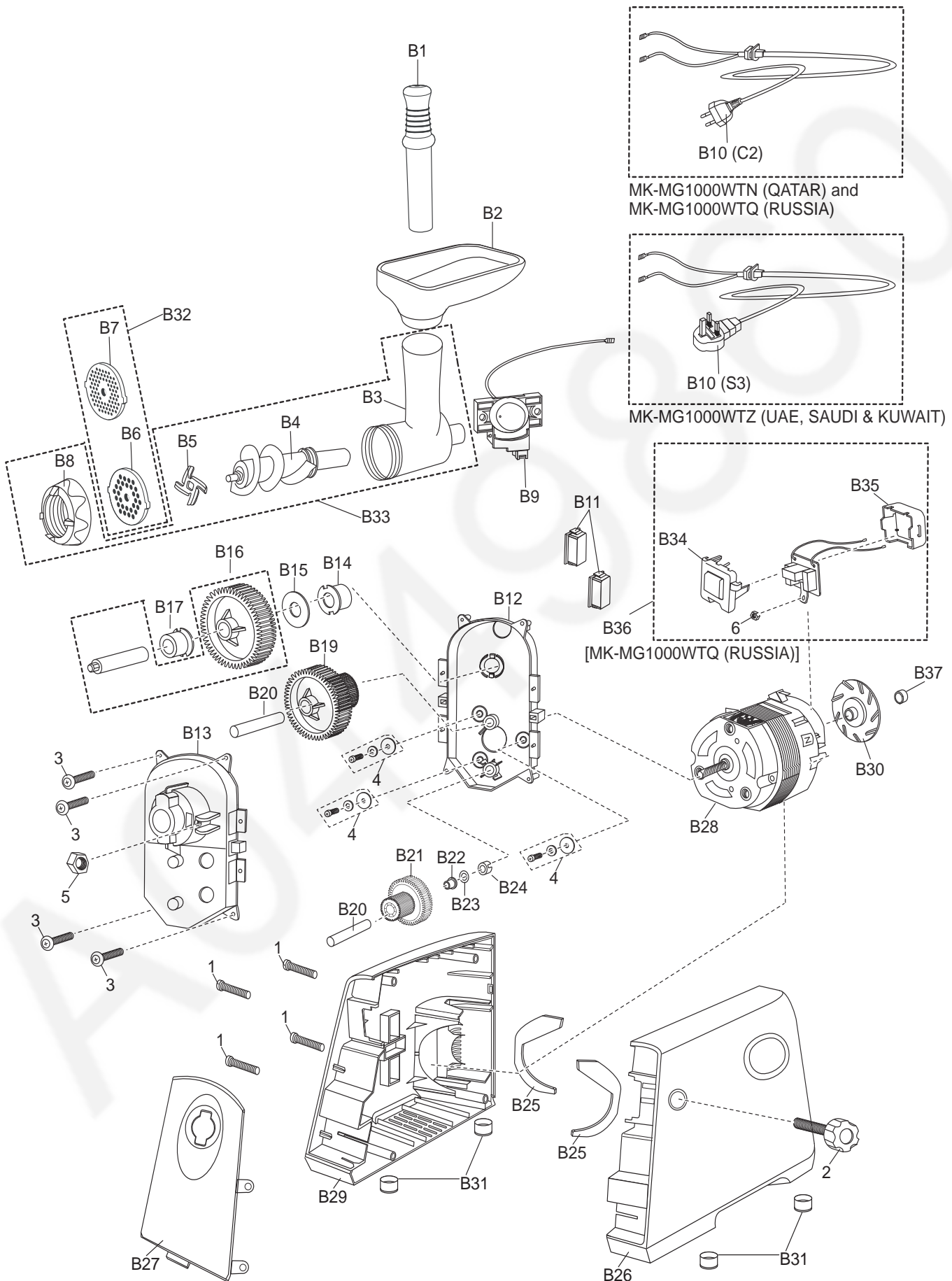
Causes	Remedy
Foreign matter caught in gears.	Take out the foreign matter.
Gears worn out or damaged.	Replace the gears.

6.6. SYMPTOM : Smell of burning from A.C. motor.

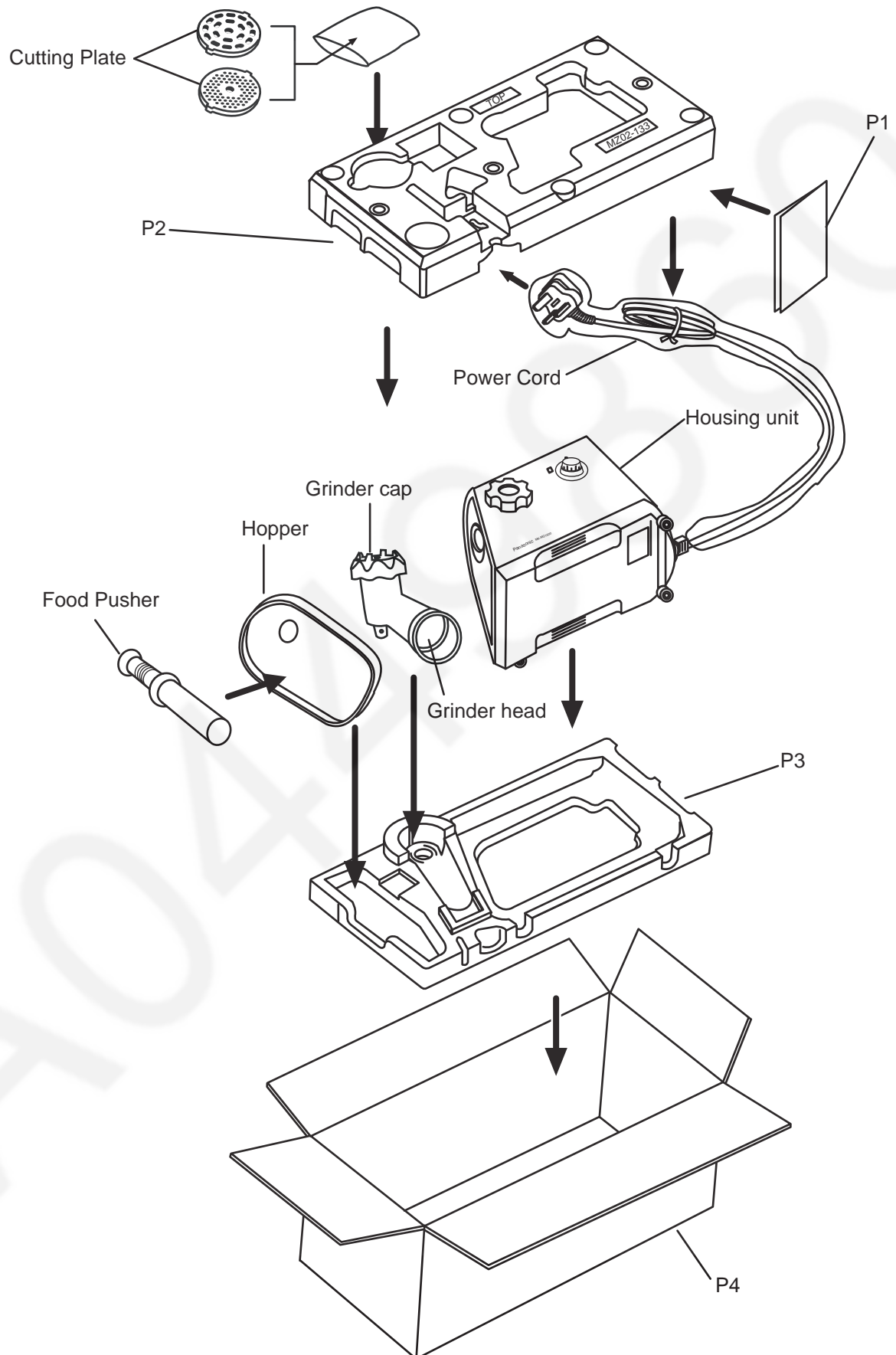
Causes	Remedy
A.C. motor insulation degraded.	Replace the A.C. motor.

7 Exploded View and Replacement Parts List

7.1. Exploded View



7.2. Packaging Instruction



7.3. Replacement Parts List

7.3.1. MK-MG1000WTN (QATAR)

Safety	Ref. No.	Part No.	Part Name & Description	Qty	Remarks
	B1	AME04-1072W0	PLUNGER	1	
	B2	AME03-126-W4	HOPPER	1	PLASTIC
	B3	AME01-121	SCREW BODY	1	
	B4	AME97-121	SCREW (U)	1	
	B5	AM12C18000	ROTATING CUTTER	1	
	B6	AM08C18100	CUTTER A	1	
	B7	AM10C18100	CUTTER C	1	
	B8	AME02-121	BODY COVER	1	
	B9	AMN98-126-W4	COMPLETE SWITCH ASS'Y	1	
△	B10	AMP96-126	CORD UNIT	1	C2 PLUG
	B11	AMB34-133	GEAR CUSHION RUBBER	2	
	B12	AMB26-1073	GEAR CASE	1	
	B13	AMB89-1073	GEAR CASE COVER LID UNIT	1	
	B14	AM04B18100	OILLESS BEARING A	1	
	B15	AM18B18000	WASHER B	1	
	B16	AM95B27300	C GEAR UNIT	1	
	B17	AM05B18100	OILLESS BEARING B	1	
	B19	AM09B27300	B GEAR	1	
	B20	AM26B18300	A GEAR SHAFT	2	
	B21	AM96B18300	A GEAR UNIT	1	
	B22	AM06B18000	OILLESS BEARING C	1	
	B23	AMA36B18100	WASHER C	1	
	B24	AMB38-126	GEAR CASE CAP	3	
	B25	AMB35-133	MOTOR CUSHION RUBBER	2	
	B26	AMB91Y126-W4	BODY LEFT UNIT	1	
	B27	AMB21-126-W4	FRONT PLATE	1	
△	B28	ATXM120A	MOTOR	1	
	B29	AMB19-126-W4	BODY RIGHT	1	
	B30	AMM31-121	FAN	1	
	B31	AJ33A53000	FOOT	4	
	B32	AMA20-126	FIXED CUTTER COMPLETE	1	
	B33	AMA32-121	COMPLETE SCREW BODY	1	
	B37	ASPN-8	PUSH NUT		
	1	XTN4+20BFJ	SCREW	4	
	2	AMB85-133-W4	FIX KNOB UNIT	1	
	3	XTN4+20BFJ	PLUS TAPPING SCREW	4	
	4	XYN4+20BFJ	SCREW WITH SPRING AND ROUND WASHER	3	
	5	XNG8BFJ	HEXAGONAL NUT	1	
			PACKING LIST		
△	P1	AMZ50Y126	OPERATING INSTRUCTION	1	
	P2	AMZ02-126	TOP CUSHION	1	
	P3	AMZ03-126	BOTTOM CUSHION	1	
	P4	AMZ01Y126	CARTON BOX	1	

7.3.2. MK-MG1000WTZ (UAE, SAUDI & KUWAIT)

Safety	Ref. No.	Part No.	Part Name & Description	Qty	Remarks
	B1	AME04-1072W0	PLUNGER	1	
	B2	AME03-126-W4	HOPPER	1	PLASTIC
	B3	AME01-121	SCREW BODY	1	
	B4	AME97-121	SCREW (U)	1	
	B5	AM12C18000	ROTATING CUTTER	1	
	B6	AM08C18100	CUTTER A	1	
	B7	AM10C18100	CUTTER C	1	
	B8	AME02-121	BODY COVER	1	
	B9	AMN98-126-W4	COMPLETE SWITCH ASS'Y	1	
△	B10	AMP91J126	CORD UNIT	1	S3 PLUG WITH CAP
	B11	AMB34-133	GEAR CUSHION RUBBER	2	
	B12	AMB26-1073	GEAR CASE	1	
	B13	AMB89-1073	GEAR CASE COVER LID UNIT	1	
	B14	AM04B18100	OILLESS BEARING A	1	
	B15	AM18B18000	WASHER B	1	
	B16	AM95B27300	C GEAR UNIT	1	
	B17	AM05B18100	OILLESS BEARING B	1	
	B19	AM09B27300	B GEAR	1	
	B20	AM26B18300	A GEAR SHAFT	2	
	B21	AM96B18300	A GEAR UNIT	1	
	B22	AM06B18000	OILLESS BEARING C	1	
	B23	AM36B18100	WASHER C	1	
	B24	AMB38-126	GEAR CASE CAP	3	
	B25	AMB35-133	MOTOR CUSHION RUBBER	2	
	B26	AMB91Y126-W4	BODY LEFT UNIT	1	
	B27	AMB21-126-W4	FRONT PLATE	1	
△	B28	ATXML20A	MOTOR	1	
	B29	AMB19-126-W4	BODY RIGHT	1	
	B30	AMM31-121	FAN	1	
	B31	AJ33A53000	FOOT	4	
	B32	AMA20-126	FIXED CUTTER COMPLETE	1	
	B33	AMA32-121	COMPLETE SCREW COMPLETE	1	
	B37	ASPN-8	PUSH NUT	1	
	1	XTN4+20BFJ	SCREW	4	
	2	AMB85-133-W4	FIX KNOB UNIT	1	
	3	XTN4+20BFJ	PLUS TAPPING SCREW	4	
	4	XYN4+20BFJ	SCREW WITH SPRING AND ROUND WASHER	3	
	5	XNG8BFJ	HEXAGONAL NUT	1	
			PACKING LIST		
△	P1	AMZ50Y126	OPERATING INSTRUCTION	1	
	P2	AMZ02-126	TOP CUSHION	1	
	P3	AMZ03-126	BOTTOM CUSHION	1	
	P4	AMZ01Y126	CARTON BOX	1	

7.3.3. MK-MG1000WTQ (RUSSIA)

Safety	Ref. No.	Part No.	Part Name & Description	Qty	Remarks
	B1	AME04-1072W0	PLUNGER	1	
	B2	AME03-126-W4	HOPPER	1	PLASTIC
	B3	AME01-121	SCREW BODY	1	
	B4	AME97-121	SCREW (U)	1	
△	B5	AM12C18000	ROTATING CUTTER	1	
	B6	AM08C18100	CUTTER A	1	
	B7	AM10C18100	CUTTER C	1	
	B8	AME02-121	BODY COVER	1	
	B9	AMN98-126-W4	COMPLETE SWITCH ASS'Y	1	
△	B10	AMP96-126	CORD UNIT	1	C2 PLUG
	B11	AMB34-133	GEAR CUSHION RUBBER	2	
	B12	AMB26-1073	GEAR CASE	1	
	B13	AMB89-1073	GEAR CASE COVER LID UNIT	1	
	B14	AM04B18100	OILLESS BEARING A	1	
	B15	AM18B18000	WASHER B	1	
	B16	AM95B27300	C GEAR UNIT	1	
	B17	AM05B18100	OILLESS BEARING B	1	
	B19	AM09B27300	B GEAR	1	
	B20	AM26B18300	A GEAR SHAFT	2	
	B21	AM96B18300	A GEAR UNIT	1	
	B22	AM06B18000	OILLESS BEARING C	1	
	B23	AMA36B18100	WASHER C	1	
	B24	AMB38-126	GEAR CASE CAP	3	
	B25	AMB35-133	MOTOR CUSHION RUBBER	2	
	B26	AMB91K126-W4	BODY LEFT UNIT	1	
	B27	AMB21-126-W4	FRONT PLATE	1	
△	B28	ATXM120AR	MOTOR	1	
	B29	AMB19-126-W4	BODY RIGHT	1	
	B30	AMM31-121	FAN	1	
	B31	AJ33A53000	FOOT	4	
	B32	AMA20-126	FIXED CUTTER COMPLETE	1	
	B33	AM32-121	COMPLETE SCREW BODY	1	
	B34	AME20-1211	CAPACITOR BASE COVER A	1	
	B35	AME21-1211	CAPACITOR BASE COVER B	1	
	B36	AMQ98J113	CAPACITOR BASE UNIT	1	
	B37	ASPN-8	PUSH NUT	1	
	1	XTN4+20BFJ	SCREW	4	
	2	AMB85-133-W4	FIX KNOB UNIT	1	
	3	XTN4+20BFJ	PLUS TAPPING SCREW	4	
	4	XYN4+20BFJ	SCREW WITH SPRING AND ROUND WASHER	3	
	5	XNG8BFJ	HEXAGONAL NUT	1	
	6	XNG5EFJ	HEXAGONAL NUT	1	
			PACKING LIST		
△	P1	AMZ99K126	OPERATING INSTRUCTION ASS'Y	1	
△	P1	AMZ50K126	OPERATING INSTRUCTION	1	
△	P1	AMZ52K126	OPERATING INSTRUCTION B	1	
	P2	AMZ02-126	TOP CUSHION	1	
	P3	AMZ03-126	BOTTOM CUSHION	1	
	P4	AMZ01K126	CARTON BOX	1	

MMH1112