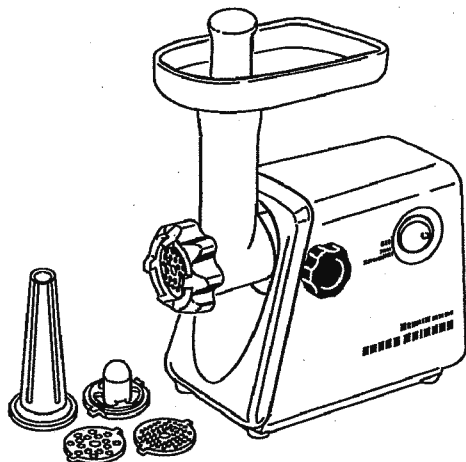


# Service Manual

## Meat Grinder

### MK-G20NR

USA



## Specification

Rated voltage:	AC120V	Dimensions:	386(H) x 166(W) x 310(D)mm
Power consumption:	180W	Weight:	Approx. 3.3kg
Rated power frequency:	60Hz	Types of cutters:	Coarse(1), medium, and fine(1) grinding cutters
Feed screw speed	135rpm	Accessories:	Attachment for sausage(A), Attachment for sausage(B)
Motor protection:	Circuit breaker(manual resetting)		
Type of switch:	Tumbler switch (ON/OFF)		

### **⚠ WARNING**

This service information is designed for experienced repair technicians only and is not designed for use by the general public. It does not contain warnings or cautions to advise non-technical individuals of potential dangers in attempting to service a product. Products powered by electricity should be serviced or repaired only by experienced professional technicians. Any attempt to service or repair the product or products dealt with in this service information by anyone else could result in serious injury or death.

## CONTENTS

	Page		Page
1 PRECAUTIONS (Strictly follow these instructions.)	2	5 DISASSEMBLY INSTRUCTIONS	4
2 SCHEMATIC DIAGRAM	2	6 PARTS LOCATION	7
3 BASIC WIRING DIAGRAM	2	7 REPLACEMENT PARTS LIST	8
4 TROUBLESHOOTING GUIDE	3	8 PACKING INSTRUCTION	9

 **National**

© 2000 Matsushita Electric Industrial Co., Ltd. All rights reserved. Unauthorized copying and distribution is a violation of law.

# 1 PRECAUTIONS (Strictly follow these instructions.)

## CAUTION

Do not grind too hard meat. If the grinder gets stuck, do not force meat into it.

## CAUTION

You may feel the feed screw vibrating during use. It is not a trouble. Do not over tighten the locking knob.

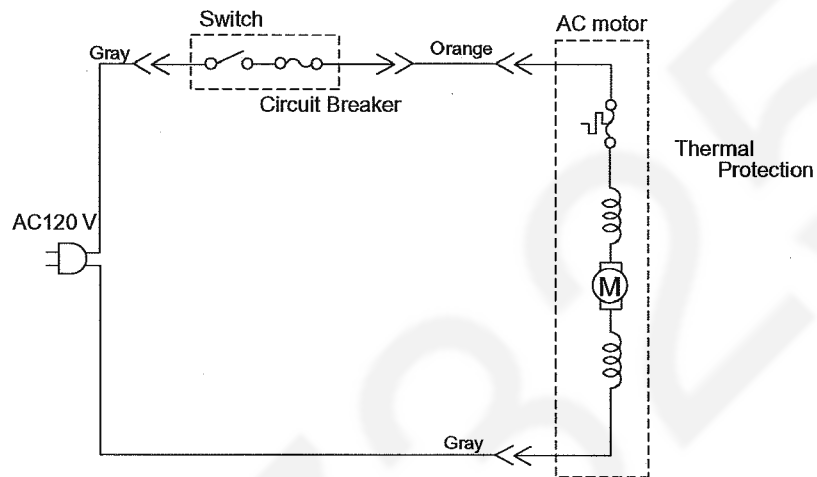
## CAUTION

Keep in mind that some parts of the grinder cannot be washed in a dishwasher.

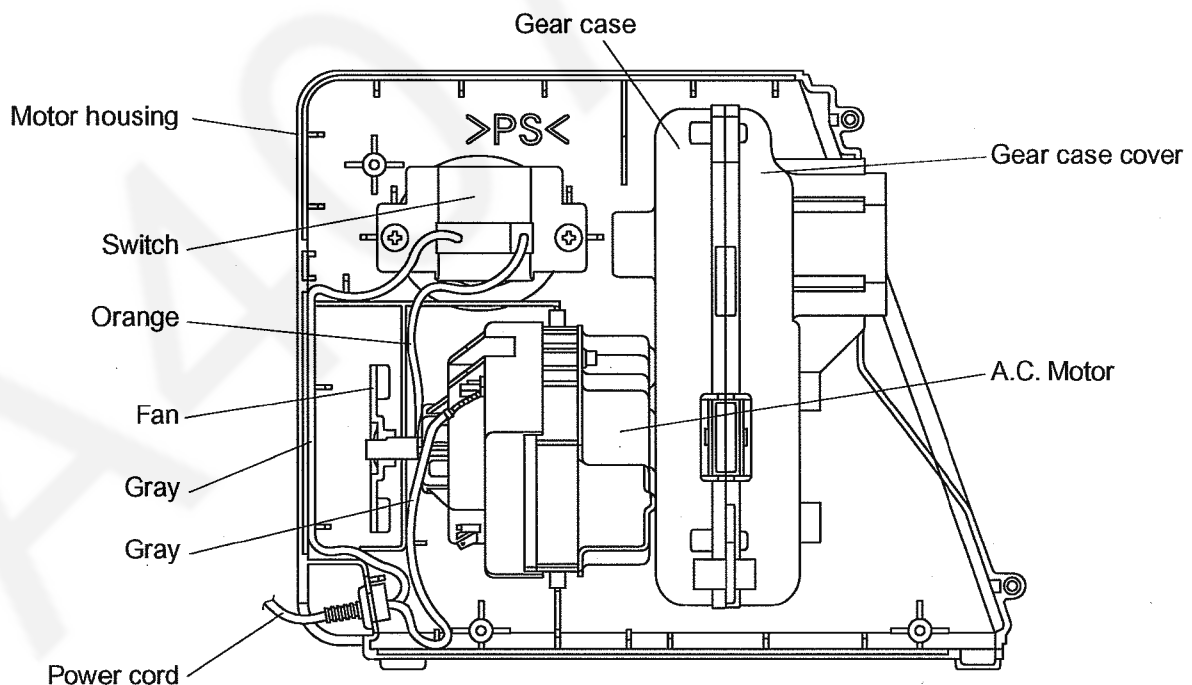
## CAUTION

This meat grinder is for home use only.

# 2 SCHEMATIC DIAGRAM



# 3 BASIC WIRING DIAGRAM



## 4 TROUBLESHOOTING GUIDE

### 4.1. SYMPTOM : A.C. motor interrupted when feeding meat (overloaded).

Causes	Remedy
Too hard meat being fed.	Take out the hard meat.
Too much meat being fed at once	Reduce the meat feed rate.
Used for too long continuously.	Follow the specified operating time.
Circuit breaker activated.	Switch off and on again to reset the breaker.

### 4.2. SYMPTOM : Switch turned on, but A.C. motor failure to start.

Causes	Remedy
Power cord broken.	Replace the power cord.
Lead wire terminal in poor contact.	Repair or replace the lead wire terminal.
Switch in poor contact.	Replace the switch.
Carbon brush worn out.	Replace the carbon brush.
A.C. motor coil broken.	Replace the A.C. motor.

### 4.3. SYMPTOM : A.C. motor running, but feed screw failure to turn.

Causes	Remedy
Gears worn out.	Replace the gears.
Gears damaged.	Replace the gears.
Feed screw worn out.	Replace the feed screw.
Feed screw damaged.	Replace the feed screw.

### 4.4. SYMPTOM : A.C. motor running too noisy and meat grinding too slow.

Causes	Remedy
Carbon brush worn out.	Replace the carbon brush.
Gears worn out or damaged.	Replace the gears.
Cutting blade or cutting plate worn out.	Replace the cutting blade or cutting plate.

### 4.5. SYMPTOM : A.C. motor running noise unusual.

Causes	Remedy
Foreign mater caught in gears.	Take out the foreign matter.
Gears worn out or damaged.	Replace the gears.

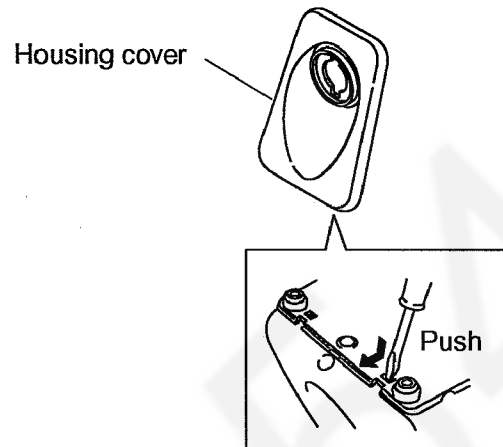
### 4.6. SYMPTOM : Smell of burning from A.C. motor.

Causes	Remedy
A.C. motor insulation degraded.	Replace the A.C. motor.

## 5 DISASSEMBLY INSTRUCTIONS

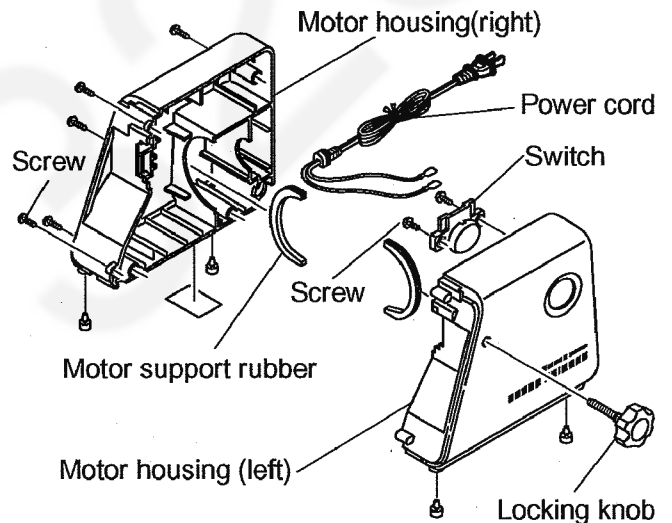
### 5.1. Removing the locking knob, housing cover and A.C. motor housing

1. Turn the locking knob counterclockwise to remove it.
2. Put a bladed screwdriver into each of the two holes at the grinder bottom. Push down the housing cover claws to detach the cover.
3. Lay the grinder with its left side down.
4. Remove the five pan head tapping screws and detach the A.C. motor housing (left).



### 5.2. Disconnecting the power cord and switch

1. Lift the A.C. motor and disconnect the lead wire terminal.
2. Pull and disconnect the power cord terminal out of the switch.
3. Disconnect the lead wire terminal from the switch.
4. Remove the two switch lock screws and take out the switch.

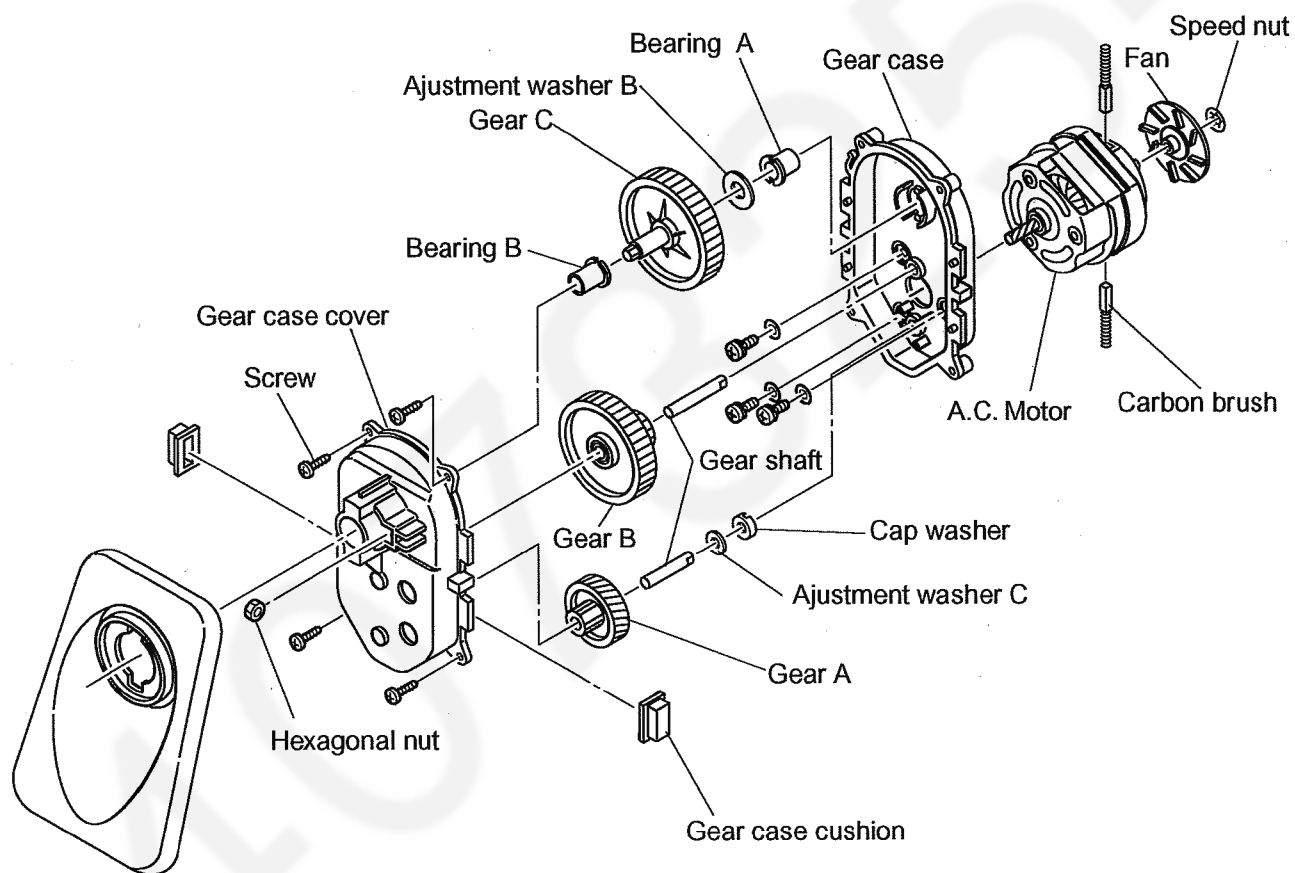


### 5.3. Removing the gear case cover, gears and gear case.

1. Remove the two gear case cushions.
2. Remove the four lock screws and detach the gear case cover.
3. Take out the bearing B from inside the gear case cover.
  - When reassembling, exactly fit the bearing B to gear case cover.
4. Take out the gears B, A and C in this order.
  - The bearing B, washers and other parts come out together, attached by grease on the gears. Remember their positions and assembling steps. Be also careful not to lose them.
5. Take out the bearing A, gear shaft and washers out of the gear case.
6. Remove the three gear case lock screws and detach the gear case from the motor.
  - To reassemble the gear case, take the reverse steps.

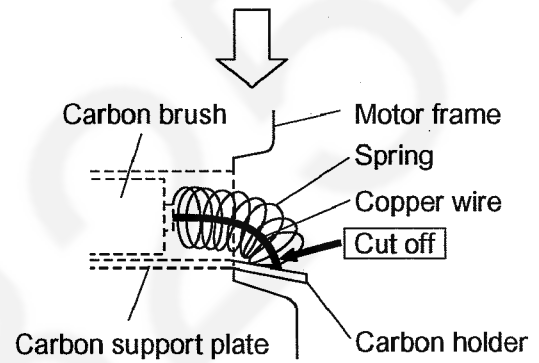
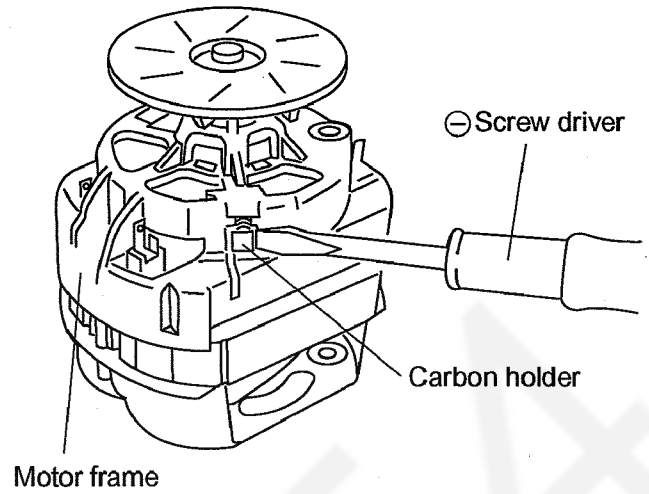
Be very careful to put all the parts (gears, washers, bearings A and B, and gear shaft) together in the correct procedure into right position and the right direction.

- Before placing the gears in position, apply grease on them.

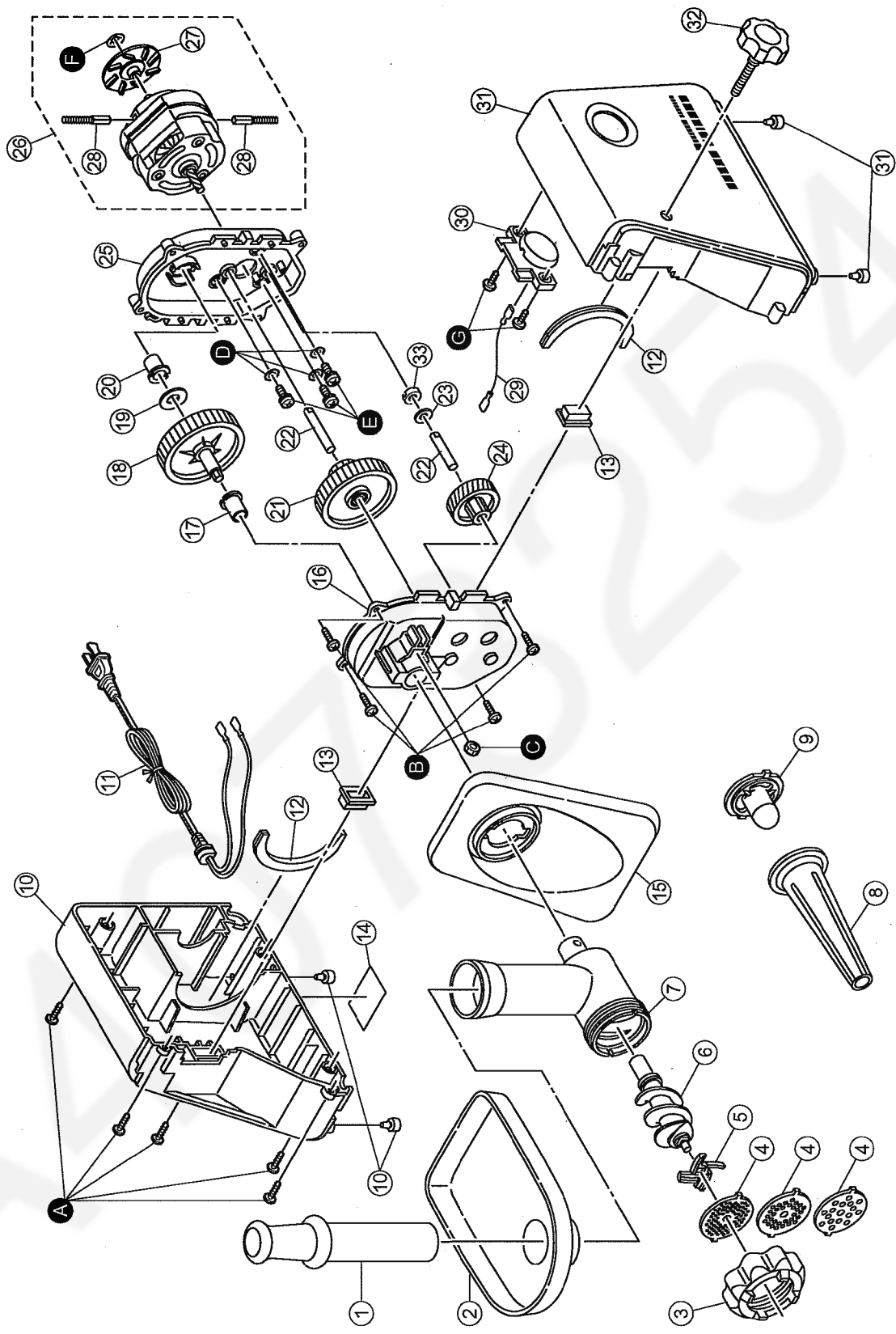


## 5.4. Replacing the Carbon brush

1. Using a bladed screwdriver, widen the carbon holder.
2. Cut the carbon brush copper wire with nippers. Take out the carbon brush.
3. Fit a new carbon brush in the carbon support plate.
4. Finally close the carbon holder.  
(Replace both the carbon brushes at once.)



# 6 PARTS LOCATION



# 7 REPLACEMENT PARTS LIST

## Important safety notice :

Components identified by  $\Delta$  mark have special characteristics important for safety.

When replacing any of these component, use only manufacturer's specified part.

Ref. No.	Part No.	Part Name & Description	Remarks
1	AME04-107-W	Food pusher	
2	AME03-107	Hopper	
3	AME02-107	Grinder cap	
4	AMM08C-180	Cutting plate	Fine 3mm
4	AMM10C-180	Cutting plate	Medium 5mm
4	AME05-107	Cutting plate	Coarse 7mm
5	AMM12C-180	Cutting blade	
6	AMM98C-180	Feed screw	
7	AME01-1071	Grinder head	
8	AME96A107	Sausage attachment A	
9	AMM96C-273	Kubbe attachment A	Sausage attachment B
10	AMB19-107-W	Motor housing(Right)	w/foot
11	AJA05A111	Power cord	$\Delta$
12	AMM38A-491	Motor support rubber	
13	AMM37A-180	Gear case cushion	
14	AMY10A107	Rating plate	
15	AMB21-107-S	Housing cover	
16	AMB27-107	Gear case cover	
17	AMM05B-180	Bearing B	
18	AMM95B-270	Gear C	
19	AMM18B-180	Adjustment washer B	
20	AMM04B-180	Bearing A	
21	AMM09B-270	Gear B	
22	AMM26B-180	Gear shaft	
23	AMM36B-180	Adjustment washer C	
24	AMM08B-180	Gear A	
25	AMB26-107	Gear case	
26	AMA08A107-0S	A.C. Motor	$\Delta$
27	AMM18F-180	Fan	
28	AMJ16F-K70	Carbon brush	$\Delta$
29	AMP93A107	Lead wire A	$\Delta$
30	AMN01-108	Switch	$\Delta$
31	AMB91-107-W	Motor housing(Left)	w/foot
32	AMM99A-300H	Locking knob	
33	AMM40B-180	Cap washer	
A	XTN4+20B	Pan head tapping screw	
B	XTN4+20B	Pan head tapping screw	
C	XNG8B	Hexagonal nut	
D	XWG5F14	Flat washer	
E	XYN5+C10	Pan head tapping screw	
F	SPN-8	Speed nut	
G	XTF4+16B	Pan head tapping screw	
	AMZ50A1071	Operating instructions	
	AMZ01A1071	Individual carton	
	AMZ47-107-0S	Carton filler	



# 8 PACKING INSTRUCTION

