

Service Manual

KETTLE



NC-SK1

Model No. NC-SK1BTZ

Chassis

Product Color B:Black

Destination PGF / UAE / Kuwait / Oman / Qatar / Saudi Arabia

⚠ WARNING

This service information is designed for experienced repair technicians only and is not designed for use by the general public. It does not contain warnings or cautions to advise non-technical individuals of potential dangers in attempting to service a product. Products powered by electricity should be serviced or repaired only by experienced professional technicians. Any attempt to service or repair the product or products dealt with in this service information by anyone else could result in serious injury or death.

IMPORTANT SAFETY NOTICE

There are special components used in this equipment which are important for safety. These parts are marked by ⚠ in the Schematic Diagrams, Circuit Board Diagrams, Exploded Views and Replacement Parts List. It is essential that these critical parts should be replaced with manufacturer's specified parts to prevent shock, fire or other hazards. Do not modify the original design without permission of manufacturer.

TABLE OF CONTENTS

	PAGE	PAGE
1 Safety Precautions -----	2	
2 Specifications -----	3	
3 Installation Instructions -----	4	
3.1. Parts Names and Handling Instructions -----	4	
4 Operating Instructions -----	5	
4.1. How to Use-----	5	
4.2. How to Clean -----	7	
4.3. Troubleshooting-----	8	
4.4. Safety Precations-----	10	
5 Troubleshooting Guide -----	11	
5.1. Check point -----	11	
5.2. Symptom and Trouble cause-----	11	
6 Schematic Diagram -----	12	
6.1. Model NC-SK1 -----	12	
7 Exploded View and Replacement Parts List -----	13	
7.1. Part Location-----	13	
7.2. Replacement Parts List -----	14	
7.3. Packing Instruction-----	15	




Panasonic

© Panasonic Corporation 2014 Unauthorized copying and distribution is a violation of law.




1 Safety Precautions

The precautions listed below must be followed in order to prevent accidents during repair and ensure the safety of the product after repair.




■ The following labels describe the degree of danger and damage that might result through non-compliance with these precautions.

	Danger	This section warns of the urgent danger of death or serious injury.
	Warning	This section warns of the risk of death or serious injury.
	Caution	This section warns of the risk of injury or damage to property.

■ The following labels describe the types of rules that need to be followed.
(These labels are examples.)

	This label shows a "reminder" action to be paid attention to.
	This label shows a "prohibited" action.
	This label shows a "compulsory" action to be followed without fail.

Warning

<p>After repair, return wiring to its original condition.</p> <p> Rotary parts or part extremities that contact lead may cause failure, electrical shock, or fire.</p>	<p>Before repair.</p> <div style="border: 1px solid black; padding: 2px; display: inline-block;"> <p>CUT A.C. POWER LINE</p> </div> <p>Make sure to cut off the power line before disassembly, parts replacement, and assembly. Otherwise, electrical shock or injury may occur.</p>
<p>Use a designated part</p> <p> Make sure to use a designated part when the part is marked in circuit diagrams and parts lists. Otherwise, smoke, fire, or failure may occur.</p>	<p>Wait until the rotary part has stopped completely.</p> <p> You may injure your hands even when the part is rotating slowly.</p> <p>Do not touch</p>

Caution

<p> Wear gloves for disassembly, replacement and assembly.</p> <p>Make sure to wear gloves in order to prevent injuries by metal edges and electric shock when the power is turned on.</p>
--

2 Specifications

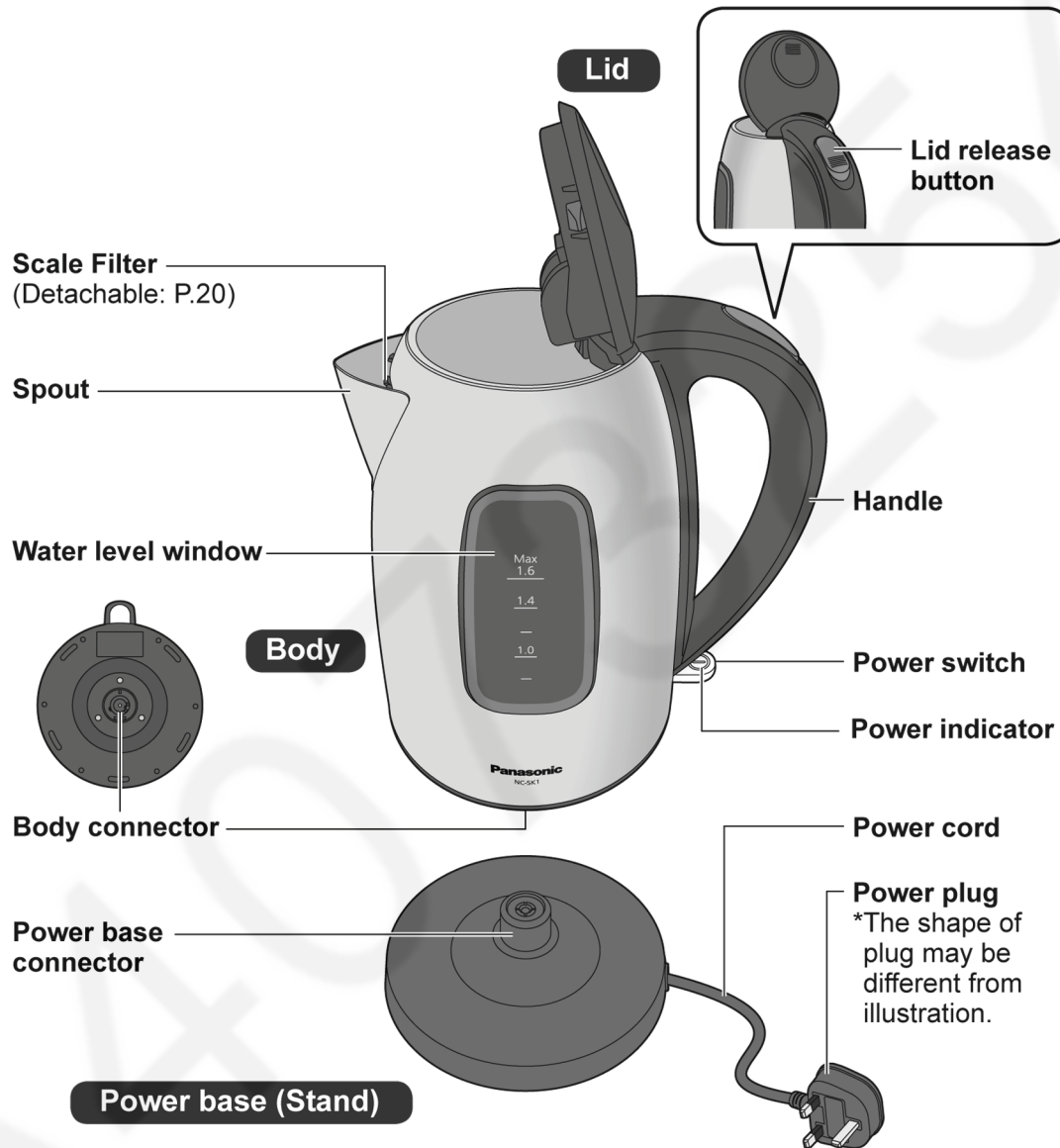
		NC-SK1
Power supply		220 - 240 V ~ 50 - 60 Hz
Power consumption		1850 - 2200 W
Dimensions (W × D × H) (approx.)	Body	21.7 cm × 15.4 cm × 23.0 cm
	Body + Power base	21.7 cm × 15.8 cm × 24.9 cm
Mass (approx.)	Body	0.9 kg
	Body + Power base	1.2 kg
Rated capacity		1.6 L
Length of the power cord (approx.)		0.7 m

- In certain regions (high altitude, very cold locations), it may not be possible to obtain the predetermined performance.

3 Installation Instructions

3.1. Partts Names and Handling Instructions

Parts Names and Handling Instructions



English

Before use

- Clean the appliance by following the steps below for the first time or when you have not used it for a while.
- ① Fill water up to the maximum water level and boil. (P.18)
- ② Pour the water out from the spout. (P.19 After use, pour out any remaining water.)
- Do not use a socket or extension cord.

4 Operating Instructions

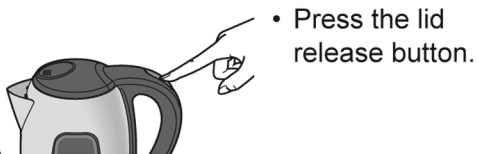
4.1. How to Use

How to Use

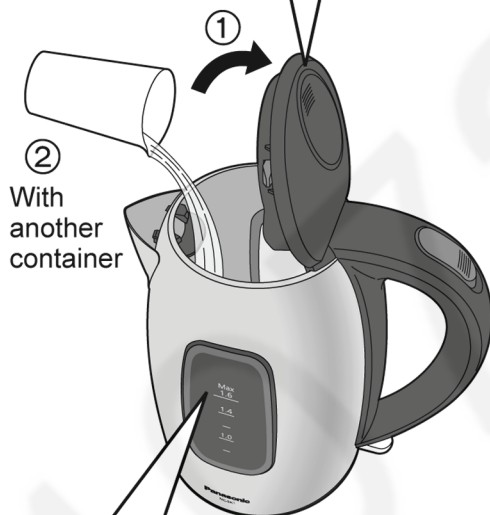
1 Open the lid and fill with water.

- Make sure the scale filter is set.

Opening the lid



- Press the lid release button.



②
With another container

Max
1.6

----- Maximum water level

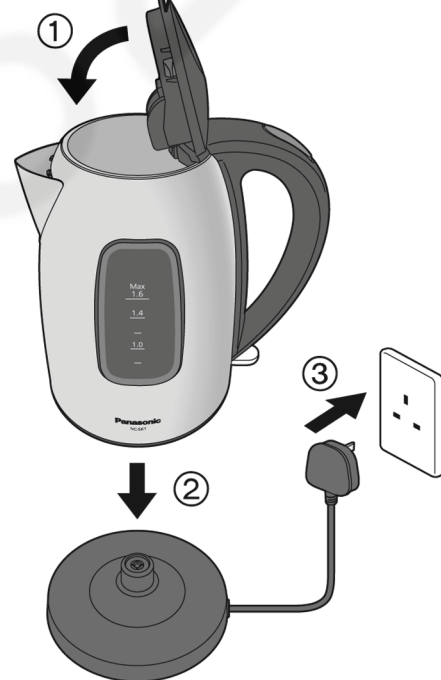
- Minimum water level is the position that can be seen through from the water level window.

2 Close the lid, put the kettle on the power base and insert the power plug.

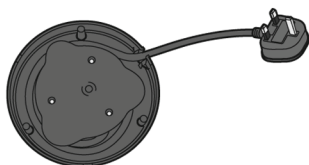
Closing the lid



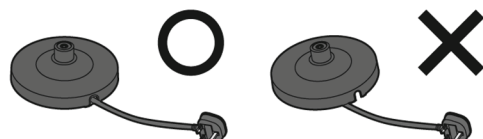
- Close the lid firmly as illustrated until you hear a click.



Adjusting the length of the power cord

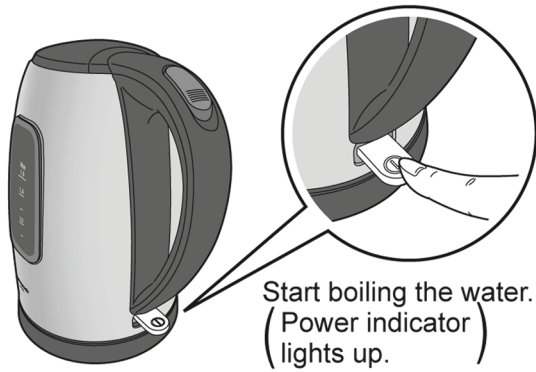



- * Wind the power cord on the bottom of the power base to adjust the length.



- * Pass the power cord out through the cut out section.
(Do not put the power base on the power cord.)

3 Turn on the power switch. (Press “”)



 During use, the power indicator lights up.

When the water has boiled, the power switch turns off automatically.
(The kettle takes around 6 minutes to boil. Water temperature 23 °C, room temperature 23 °C, water to max level, 230 V.)

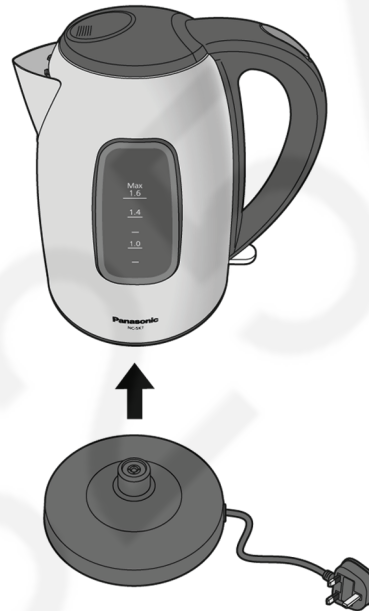
- To stop boiling before the water has boiled, turn off the power switch.



Note

- Immediately after the water has boiled, do not force the kettle to continue heating the water by keep pressing the power switch. (It may cause malfunction.)

4 Remove from the power base and pour.



- After use, pour out any remaining water.



*Keep the lid closed when pouring away the water.

Empty-use prevention function

When the power switch is on without water, an empty-use prevention function works to automatically turn off the power in order to prevent accidents and malfunction due to overheating.

- ① Allow the body to cool sufficiently.
- ② Remove the body from the power base and fill the water.
- ③ Place it on the power base and turn on the power switch again.

*If you boil the kettle without water, it may smell strange.

4.2. How to Clean

How to Clean

- Clean the appliance after every use.
- Before cleaning, unplug the power plug, pour away the hot water, and cool the body.
 - Do not use dish soap. (This may cause a residual odour.)
 - Do not use benzine, thinner, alcohol, bleach, polishing powder, metal brush or nylon brush, otherwise the surface will be damaged.
 - Do not wash in a dishwasher.

Scale Filter

Wash carefully using a brush etc.

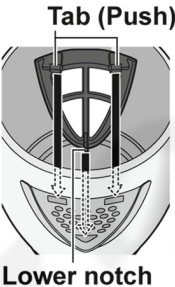
- If the spout is blocked by scale, hot water will pour less easily.
- After cleaning, always attach it to the body.

How to detach

- Pull the scale filter from the body.


How to attach

- Place the lower notch of the scale filter in the triangle hole inside of the spout, and insert the tabs into the rectangles to click them in. (Both side)



Lid

Wipe with a well-wrung cloth.



Body connector

English

Body

<p>(Outside)</p> <p>Wipe with a well-wrung cloth.</p>	<p>(Inside)</p> <p>Rub with a soft sponge and rinse.</p>
---	--

Scale build-up

Minerals such as calcium carbonate contained in the water build up in the kettle.

■ Please remove the scale.

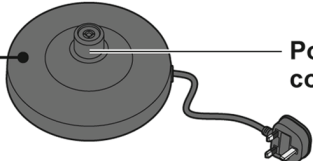
① Remove it regularly using:

- scale remover
Follow the instructions supplied with the scale remover.
- citric acid
Fill the kettle with water half way up and boiled it. After switch is off, put approx. 80 g of citric acid and stir it well. Let it still for approx. 30 min.
- vinegar
Fill the kettle with water up to Max level and boiled it. After switch is off, put approx. 100 mL of vinegar and stir it well. Let it still for approx. 2 hours.

② After removal, repeat the following steps a few times: fill with water, boil, pour away.

Power base

Wipe with a well-wrung cloth.



Power base connector

To store

- Dry thoroughly.
- Seal in a plastic bag to prevent insects etc. from entering.

4.3. Troubleshooting

Troubleshooting

Check the following before contacting the shop or asking for a repair.

Problem	Cause	How to correct
Power indicator does not lights up.	● Is the power plug plugged in?	● Insert the power plug into the outlet. (P.18)
	● Is the body set correctly on the power base?	● Ensure the body is set correctly.
	● Is there a piece of metal or foreign material adhered to the power base connector or body connector?	● Remove the piece of metal or foreign material. (P.20–21)
Power switch does not turn on.	● Once the kettle has boiled, the power switch is automatically turned off and cannot be turned on for approximately 3 minutes.	
Water does not boil.	● Did you try to turn on the power switch without water in the kettle? (The Empty-use prevention function will work to turn off the power switch.)	● Fill with water and turn on the power switch. (P.18)
	● Is the power switch turned off?	● Press “ⓘ”, and turn on the power switch. (P.19)

English

Troubleshooting

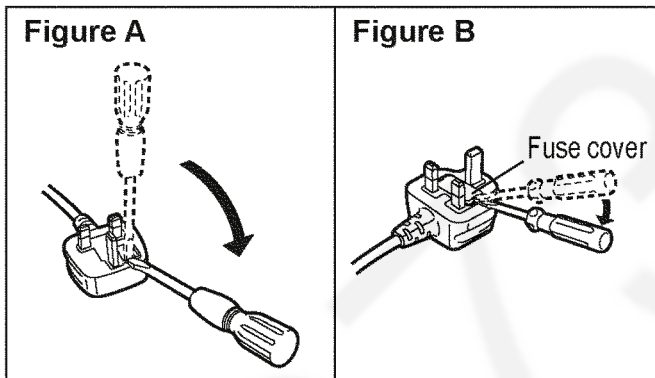
Problem	Cause	How to correct
Hot water may burst out from the spout.	<ul style="list-style-type: none"> ● Is the water level above the maximum water level? 	<ul style="list-style-type: none"> ● Reduce the water down to the maximum water level or lower. (P.18)
Water is dripping from the bottom of the body.	<ul style="list-style-type: none"> ● Since the kettle is designed to sense steam and turn off the power switch, the steam can condense and drip from the bottom of the body as water droplets. This is not malfunction. 	
The hot water has a strange smell.	<ul style="list-style-type: none"> ● Depending on the amount of chloride contained in the water supply, there may be a residual chalky smell. 	
	<ul style="list-style-type: none"> ● The first time of use, there may be plastic smell, but this will disappear as you continue to use the kettle. 	
Shiny white or brown substances are floating in the hot water.	<ul style="list-style-type: none"> ● This is scale. Scale is more likely to be generated when using water with a high mineral content. • Mineral water. • Water from ionic water purifiers. 	<ul style="list-style-type: none"> ● Clean the kettle with a scale remover. (P.20)
Rough milky white substances are adhered to parts inside the body.		
The sound of water boiling has become very loud.		
Hot water is difficult to pour.	<ul style="list-style-type: none"> ● Has the scale filter been blocked by foreign matter or scale? 	<ul style="list-style-type: none"> ● Detach and clean with a brush etc. (P.20) ● Clean the kettle with a scale remover. (P.20)
A clicking sound is heard a short time after use.	<ul style="list-style-type: none"> ● This sound is made when an internal heat component cools down. This is not malfunction. 	
The kettle is taking a long time to boil.	<ul style="list-style-type: none"> ● Did you boil with the lid open? 	<ul style="list-style-type: none"> ● Close the lid. (P.18)
	<ul style="list-style-type: none"> ● Scale build up. 	<ul style="list-style-type: none"> ● Clean the kettle with a scale remover. (P.20)
	<ul style="list-style-type: none"> ● If the water is very cold, the kettle will take longer time to boil. 	

4.4. Safety Precautions

How to replace the fuse

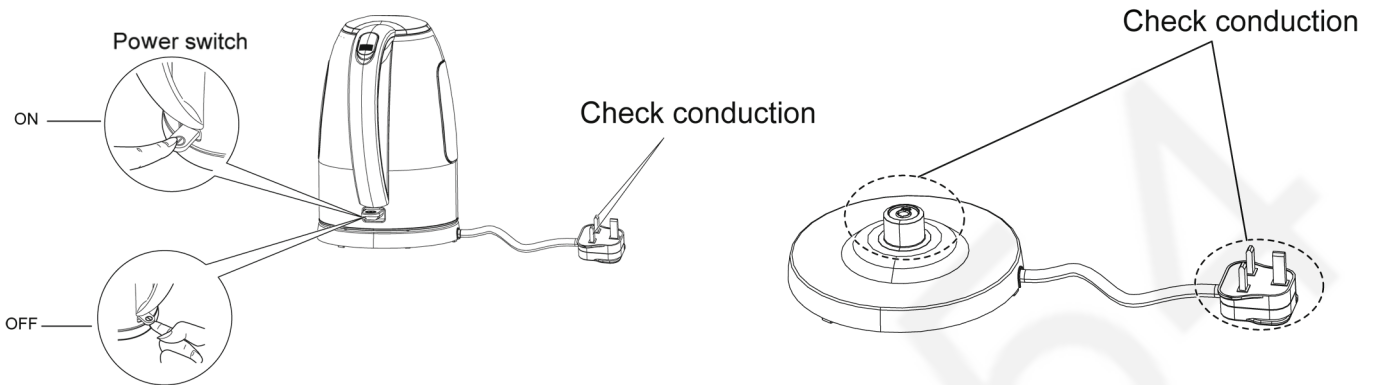
The location of the fuse differs according to the type of AC mains plug (figures A and B). Confirm the AC mains plug fitted and follow the instructions below. Illustrations may differ from actual AC mains plug.

Open the fuse cover with a screwdriver and replace the fuse and close or attach the fuse cover.



5 Troubleshooting Guide

5.1. Check point



5.2. Symptom and Trouble cause

5.2.1. Hot water is not boiled.

Q-1 When "ON" does power switch, the power indicator lamp turns on.

- Check the conduction of the main body unit. : Conduction less / heater disconnection is thought about.
- Heater disconnection : Exchange of the main body unit.

Q-2 Even if "ON" does power switch, the power indicator lamp does not turn on.

- Check the conduction of power supply cord, the main body unit : Conduction less /Defectiveness of the power switch, disconnection of the power supply cord and the main body and the contact defectiveness of the joint of the power base are thought about.
- Power switch, the main body and the contact of the joint of the power base : Exchange of the main body unit.
- Poor in power supply cord disconnection and the main body and the contact of the joint of the power base. : Exchange of the power base.

5.2.2. Power indicator lamp does not turn on.

Q-1 Even if "ON" does power switch, the power indicator lamp does not turn on. (Hot water is boiled.)

- Check the conduction of the main body. : Power switch is "OFF", but there is conduction. /Short circuit of the power switch is thought about.
- Poor power switch : Exchange of the main body unit.

5.2.3. Even if hot water is boiled, it is not cut off.

Q-1 Even if "ON" does power switch, the power indicator lamp does not turn on. (Hot water is boiled.)

- The power indicator lamp that power switch does not become "OFF" turns on.
- Poor power indicator lamp : Exchange of the main body unit.

5.2.4. Hot water is not sometimes boiled.

Q-1 It is not sometimes heated with time when hot water is boiled in a state of power switch "ON".

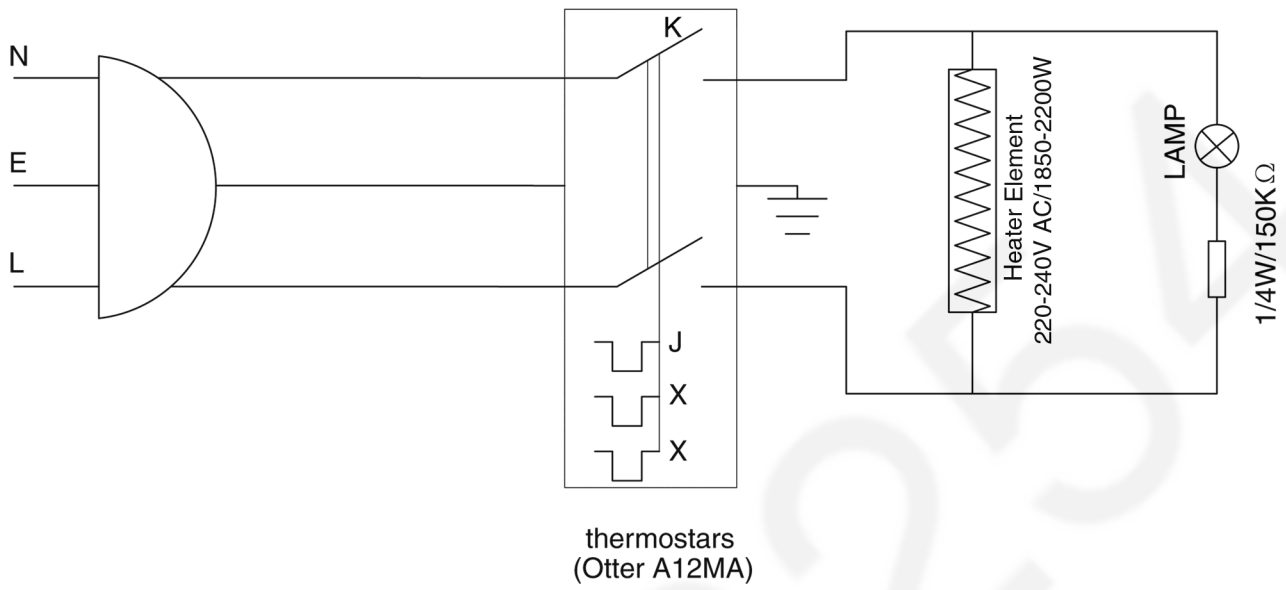
- With power switch as "ON", Check conduction while investing the main body on the power base in right and left: Poor contact of the joint of the power base is regarded as the main body unit.
- The defectiveness of the joint of the main body and the power base: Exchange of the main body or the power base.

Q-2 When hot water is boiled in power switch "ON", it is not sometimes heated.

- Twist power supply cord and, with power switch as "ON", check conduction: When poor conduction is sometimes caused, poor power supply cord is thought about.
- Defectiveness of the power supply cord: Exchange of the power base.

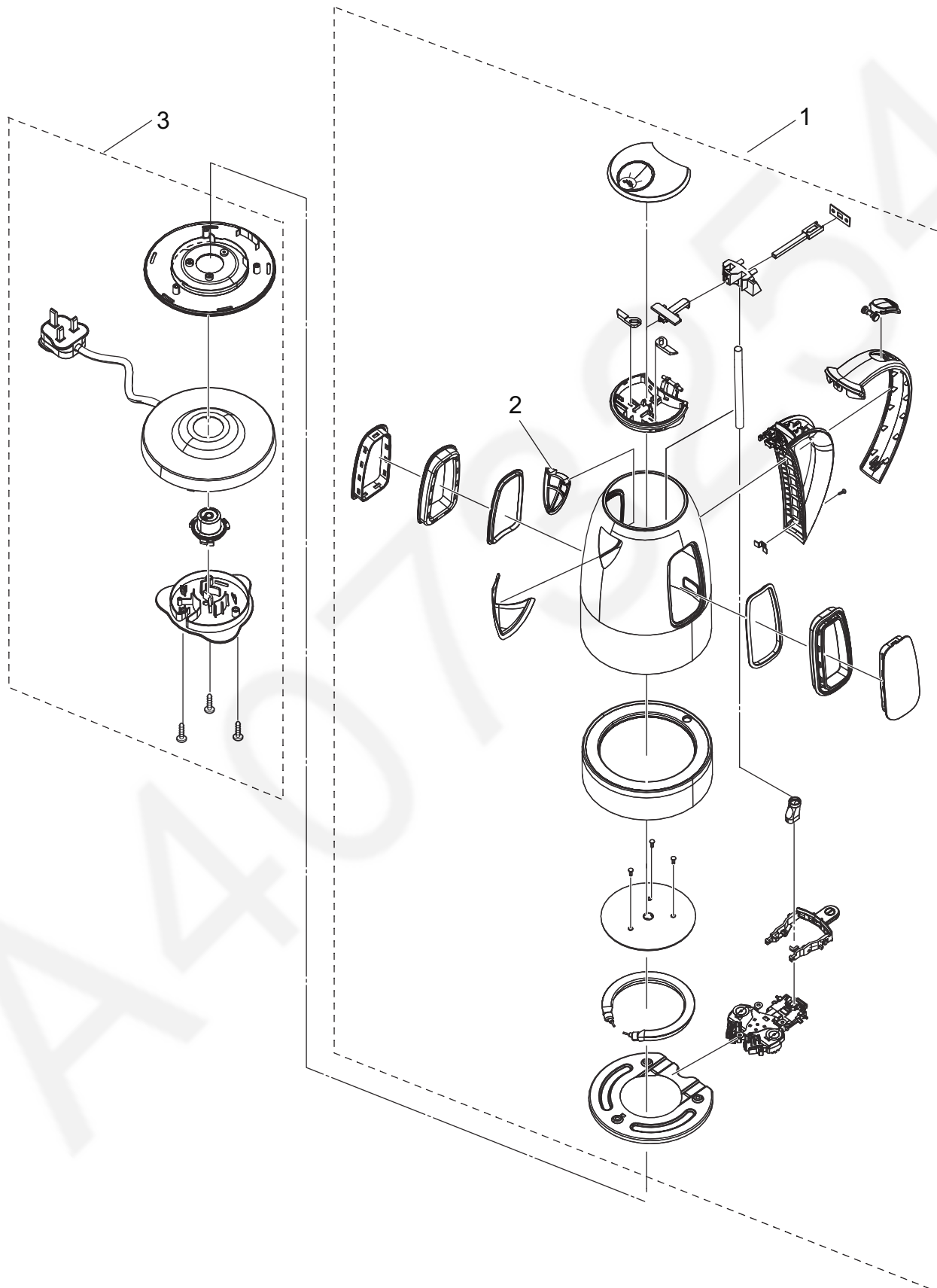
6 Schematic Diagram

6.1. Model NC-SK1



7 Exploded View and Replacement Parts List

7.1. Part Location



7.2. Replacement Parts List

Notes: Important safety notice

- Components identified by ⚠ mark have special characteristics important for safety.
- " When replacing any of these components use only manufacturer's specified parts."
- Please order " Individual box " ten by a unit.

Safety	Ref. No.	Part No.	Part Name & Description	Pcs/Set	Remarks
<PARTS LIST>					
⚠	1	APA40J673-K0S	Main body unit	1	
	2	APB96-673-00U	Mesh filter	1	
⚠	3	APC78J673-K0S	Power base	1	
<PACKING SPECIFICATIONS>					
		APZ01J673-K0U	Individual box	1	with POS Label
		APZ62-673-00S	Cushion set	1	
⚠		APZ05J673	Operating instructions	1	

7.3. Packing Instruction

