

Service Manual

[TOP NEXT](#)

KAD0402545C3

Service Manual

Juicer/ Blender

- MJ-W176PWTC

PGF



Specifications are subject to change without notice.

Specification

Power Source	A.C. 220-240V 50-60Hz
Power Consumed	210-230W
Rotation Speed	(Juicer) 12,000-13,100r.p.m. (Blender) 11,700-12,700r.p.m.
Switch Control	(Juicer) ON/ OFF Push button type (Blender) 2 Speed Push button and pulse
Power Cord	0.9m(With C2 plug)
Dimensions	(Juicer) 323(H)× 288(W)× 212(D)mm (Blender) 382(H)× 288(W)× 171(D)mm (Mill) 264(H)× 288(W)× 171(D)mm
Weight	(Juicer) approx. 3.0Kg (Blender) approx. 3.4Kg (Mill) approx. 2.6Kg
Rated Capacity	(Blender) max. 1,000ml (Mill) max. 50g coffee bean

Blender Container

Glass

Attachment

Cleaning brush

© 2004 Matsushita Electric Industrial Co., Ltd. All rights reserved. Unauthorized copying and distribution is a violation of law.

 **WARNING**

This service information is designed for experienced repair technicians only and is not designed for use by the general public. It does not contain warnings or cautions to advise non-technical individuals of potential dangers in attempting to service a product. Products powered by electricity should be serviced or repaired only by experienced professional technicians. Any attempt to service or repair the product or products dealt with in this service information by anyone else could result in serious injury or death.

Panasonic

[TOP NEXT](#)

1 PRECAUTIONS(Strictly follow these instructions.)

[TOP](#) [PREVIOUS](#) [NEXT](#)

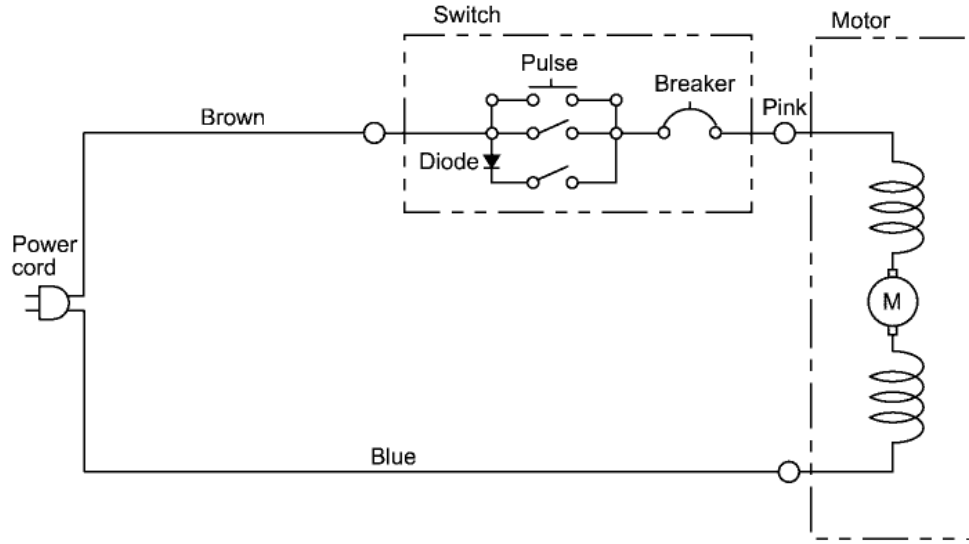
CAUTION

- Maximum capacity : 1,000ml. (Blender)
- Do not crush ice cubes alone.
- Dice solid foods first. Blend with liquid.
- Do not operate blender longer than 3 minutes at one time. Stop for 1 minutes, then resume.

[TOP](#) [PREVIOUS](#) [NEXT](#)

2 SCHEMATIC DIAGRAM

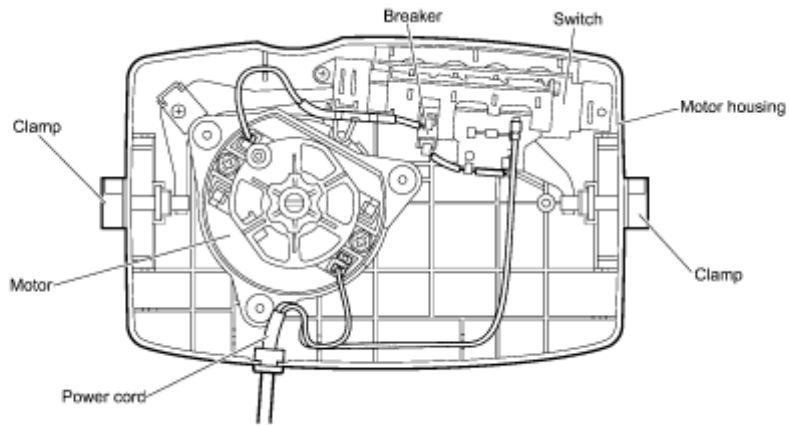
[TOP](#) [PREVIOUS](#) [NEXT](#)



[TOP](#) [PREVIOUS](#) [NEXT](#)

3 BASIC WIRING DIAGRAM

[TOP](#) [PREVIOUS](#) [NEXT](#)



[TOP](#) [PREVIOUS](#) [NEXT](#)

4.1.1 SYMPTOM : Motor doesn' t rotate.

[TOP](#) [PREVIOUS](#) [NEXT](#)

Cause	Remedy
Switch malfunction	Replace the switch
Cord cut or disconnected	Replace the cord

[TOP](#) [PREVIOUS](#) [NEXT](#)

4.1.1 SYMPTOM : Motor doesn' t rotate.

[TOP](#) [PREVIOUS](#) [NEXT](#)

Cause	Remedy
Switch malfunction	Replace the switch
Cord cut or disconnected	Replace the cord

[TOP](#) [PREVIOUS](#) [NEXT](#)

4.1.2 SYMPTOM : Motor“ roars” but doesn’ t rotate.(Turn the switch off immediately.)

[TOP](#) [PREVIOUS](#) [NEXT](#)

Cause	Remedy
Motor bearing rushed	Disassemble and apply oil, or replace the motor

[TOP](#) [PREVIOUS](#) [NEXT](#)

4.1.3 SYMPTOM : Motor overheats.

[TOP](#) [PREVIOUS](#) [NEXT](#)

Cause	Remedy
High voltage	Adjust it
Shorted motor	Replace the motor
Eccentric main shaft gear part	Replace the part
Main shaft is hard to operate	Disassemble and adjust it or replace it
Unloaded operation	Be sure that something is in the container before operating
Overload (rotation is impeded by a hard object, or a high viscosity substance in the container)	Refer to operation

[TOP](#) [PREVIOUS](#) [NEXT](#)

4.1.4 SYMPTOM : Unusual odor

[TOP](#) [PREVIOUS](#) [NEXT](#)

Cause	Remedy
Overheating	Refer to the section concerning overheating of the motor
Liquid leaking into motor	Refer to the section concerning liquid leakage
Motor absorbing moisture	Dry the motor or replace it

[TOP](#) [PREVIOUS](#) [NEXT](#)

4.2.1 SYMPTOM : Motor“ roars” but doesn’ t rotate (switch off immediately)

[TOP](#) [PREVIOUS](#) [NEXT](#)

Cause	Remedy
The spinner is contacting bottom of inlet	After removing cutter base, decrease the number of adjustment rings
Foreign materials are clogged between the spinner and the cutter	Remove them
Hard materials or seeds are clogged between the inlet bottom and the cutter	Remove them

[TOP](#) [PREVIOUS](#) [NEXT](#)

4.2.2 SYMPTOM : Noise, vibration

[TOP](#) [PREVIOUS](#) [NEXT](#)

Case	Remedy
Deformation of spinner	Replace the spinner
Residue has collected unevenly	Clean the spinner
Incompletely fastened clasp	Fasten it completely Replace it
The fastening part of the container cover clasp is worn out	Replace the cover
Incompletely fastened back cover	Fasten it completely
Incorrect placement of the main unit	Inspect the rubber feet Use on a level surface

[TOP](#) [PREVIOUS](#) [NEXT](#)

4.2.3 SYMPTOM : The spinner is difficult to install and remove

[TOP](#) [PREVIOUS](#) [NEXT](#)

Cause	Remedy
The clutch pin of the cutter base doesn't operate smoothly	Examine the clutch pin; replace it if necessary
Foreign materials are clogged between the cutter base and the spinner base	Remove them

[TOP](#) [PREVIOUS](#) [NEXT](#)

4.2.4 SYMPTOM : Juice is poorly extracted

[TOP](#) [PREVIOUS](#) [NEXT](#)

Cause	Remedy
Cutter doesn't operate well	Replace complete spinner
Spinner is broken	Replace complete spinner
Continuous use for a long period	Remove the residue
Too large a gap between inlet bottom and cutter blade	Adjust it within the range of 0.5 - 0.9mm

[TOP](#) [PREVIOUS](#) [NEXT](#)

4.2.5 SYMPTOM : Juice contains too much residue

[TOP](#) [PREVIOUS](#) [NEXT](#)

Cause	Remedy
Cutter blade is worn out	Replace the spinner (complete)
Gap between inlet bottom and cutter blade is too large	Use two or three adjusting washers on the motor shaft

[TOP](#) [PREVIOUS](#) [NEXT](#)

4.2.6 SYMPTOM : Cutter rubs against inlet bottom

[TOP](#) [PREVIOUS](#) [NEXT](#)

Cause	Remedy
Gear incompletely engaged between cutter base and spinner	Engage the gear
Too many adjustment rings on the motor shaft	Decrease the number of adjustment rings and adjust the gap within the range of 0.5 - 0.9mm

[TOP](#) [PREVIOUS](#) [NEXT](#)

4.2.7 SYMPTOM : Leakage of juice

[TOP](#) [PREVIOUS](#) [NEXT](#)

Cause	Remedy
Container and/or cover deformed or broken	Replace the container or cover
Incorrect clasp fastening	Examine the clasp; adjust the fastening force
Foreign materials are clogged between the container cover and the container	Clean it and remove them
Excessive vibration	Clean it and adjust the spinner balance

[TOP](#) [PREVIOUS](#) [NEXT](#)

4.3.1 SYMPTOM : Cutter won' t rotate

[TOP](#) [PREVIOUS](#) [NEXT](#)

Cause	Remedy
Main shaft binding	Disassemble and oil, or replace

[TOP](#) [PREVIOUS](#) [NEXT](#)

4.3.2 SYMPTOM : Motor rotates but cutter doesn' t rotate

[TOP](#) [PREVIOUS](#) [NEXT](#)

Cause	Remedy
Gear is worn out	Replace the gear (cutter base)

[TOP](#) [PREVIOUS](#) [NEXT](#)

4.3.3 SYMPTOM : Noise, vibration

[TOP](#) [PREVIOUS](#) [NEXT](#)

Cause	Remedy
Bad gearing of container and motor	Make the gearing correct
Gear is eccentric (bearing)	Repair or replacement (bearing)
Deformed or broken cutter	Repair or replacement

[TOP](#) [PREVIOUS](#) [NEXT](#)

4.3.4 SYMPTOM : Juice leakage

[TOP](#) [PREVIOUS](#) [NEXT](#)

Cause	Remedy
Broken container	Replace the container
Bad container base	Replace the packing
Loose fastened part	Fasten it tightly
Main shaft is worn out	Replace the main shaft and bearing

(Notes)

Do not attempt to clean parts with boiling water.

Do not attempt to use fire to quickly dry parts.

Orange juice stains, etc. can be removed by using alcohol or detergent. Avoid using volatile substances when cleaning.

[TOP](#) [PREVIOUS](#) [NEXT](#)

5.1 Coupler (Fig.1)

[TOP](#) [PREVIOUS](#) [NEXT](#)

1. Remove the coupler cap.
2. With the coupler fixed, remove the coupler nut by using a screwdriver.
3. Remove the coupler by pulling it upward.

[TOP](#) [PREVIOUS](#) [NEXT](#)

5.2 Bottom plate and motor (Fig.1)

[TOP](#) [PREVIOUS](#) [NEXT](#)

1. The bottom plate can be detached by removing the 4 setscrews.
2. Pull out the connection terminal of the AC motor. Then the motor can be detached.

[TOP](#) [PREVIOUS](#) [NEXT](#)

5.3 Carbon brush (Fig.1)

[TOP](#) [PREVIOUS](#) [NEXT](#)

1. Remove the AC motor.
2. Raise the carbon brush terminal claws to detach the carbon brush.

Cautions for Replacement

- Replace the right and left carbon brushes simultaneously.

[TOP](#) [PREVIOUS](#) [NEXT](#)

5.4 Power cord (Fig.1)

[TOP](#) [PREVIOUS](#) [NEXT](#)

1. Remove the bottom plate.
2. Remove the power cord from the AC motor housing and replace it with new one.

[TOP](#) [PREVIOUS](#) [NEXT](#)

5.5 Clamps A and B (Fig.2)

[TOP](#) [PREVIOUS](#) [NEXT](#)

1. Remove the bottom plate.
2. Detach the E-clip for each clamp.
Then the clamps can be replaced.
 - o Clamps A and B are marked with “A” and “B” on the rear side respectively. Therefore, check the marks and install the clamps A and B in correct positions.

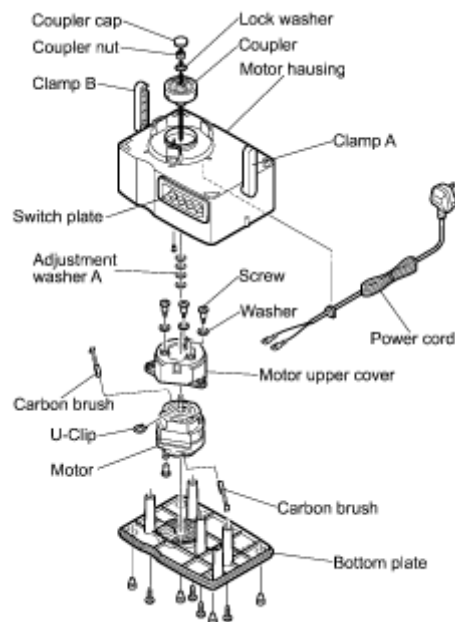
[TOP](#) [PREVIOUS](#) [NEXT](#)

5.6 Switch, Switch plate (Fig.2)

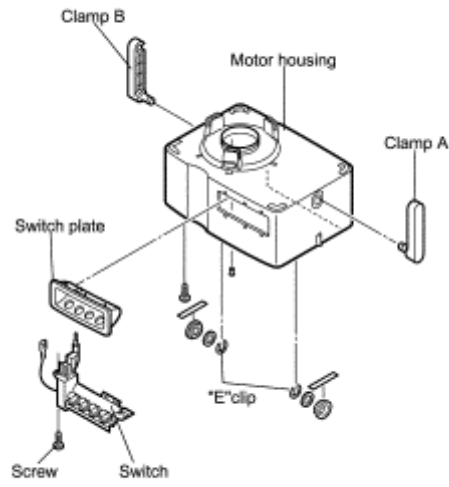
[TOP](#) [PREVIOUS](#) [NEXT](#)

1. Remove the bottom plate.
2. Remove the 1 setscrew of the switch.
3. Pull out the connection terminal of the switch.
4. To remove the switch plate, remove the switch beforehand. Next, remove the two claws of the switch plate out of the motor housing.

(Fig.1)



(Fig.2)



[TOP](#) [PREVIOUS](#) [NEXT](#)

5.7 Clearance adjustment **(Fig.3)**

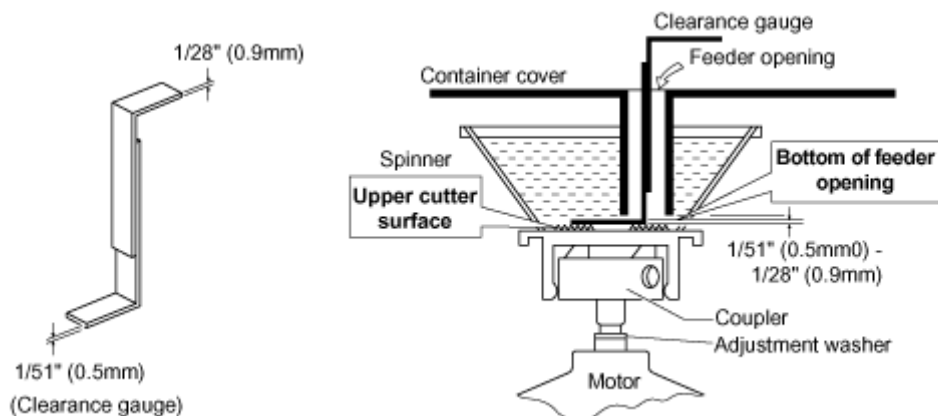
[TOP](#) [PREVIOUS](#) [NEXT](#)

1. Insert the clearance gauge between the upper cutter surface of spinner (extractor) and the bottom of feeder opening. **(Fig.3)**
2. when the thinner side ($1/51''$... 0.5mm) can be inserted and the thicker side ($1/28''$... 0.9mm) cannot, the clearance is appropriate.
3. If the thicker side ($1/28''$... 0.9mm) can be inserted, the clearance is too large.

In that case, remove the coupler and add some adjustment washers onto the motor shaft.

4. In the thinner side ($1/51''$... 0.5mm) cannot be inserted, the clearance is too narrow.
In that case, remove the coupler and take off some adjustment washers from the motor shaft.

(Fig.3)



[TOP](#) [PREVIOUS](#) [NEXT](#)

5.8 Glass container and cutting blade(Fig.4, 5, 6)

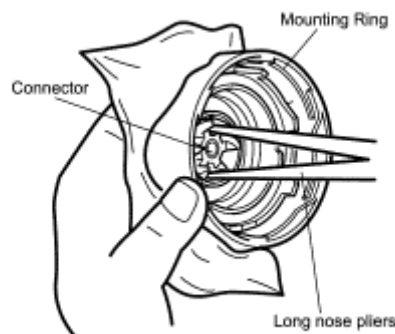
[TOP](#) [PREVIOUS](#) [NEXT](#)

1. Remove the cover, then turn the glass container up-sidedown.
2. Secure the glass cup and turn the mounting ring counterclockwise. [\(Fig.4\)](#)
3. The gasket (upper) can be removed.
4. Wrap the cutting blade with a cloth for protection and secure it.
5. Turn the upper connector clockwise with long nose pliers. [\(Fig.5\)](#)
 - o The parts can be assembled by reversing the disassembly procedure.

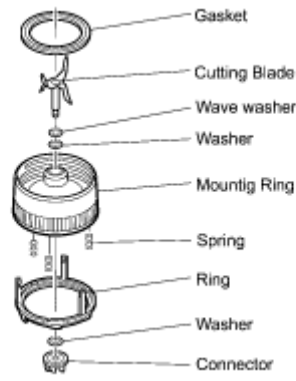
(Fig.4)



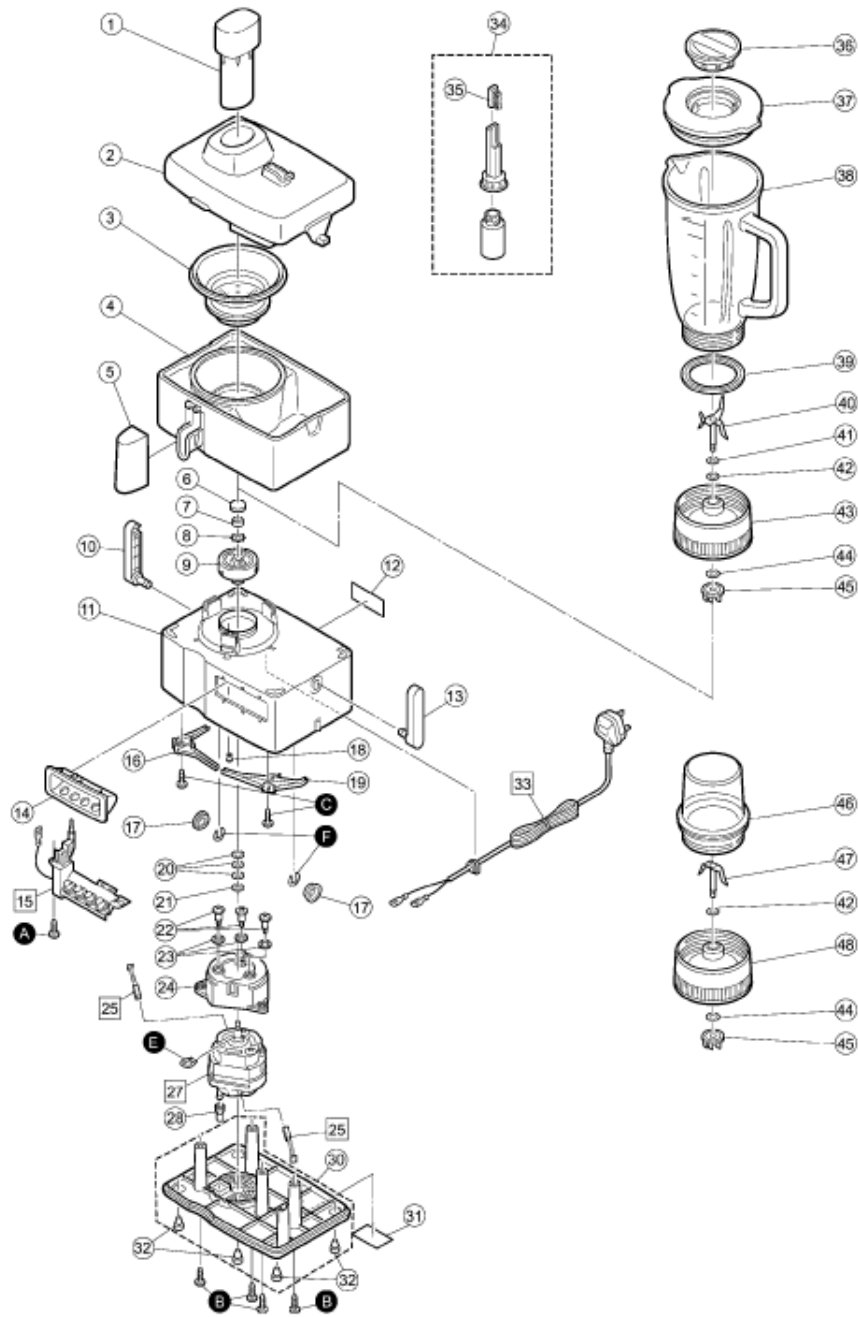
(Fig.5)



(Fig.6)



[TOP](#) [PREVIOUS](#) [NEXT](#)



7 REPLACEMENT PARTS LIST

[TOP PREVIOUS](#)

Important safety notice :

Components identified by  mark have special characteristics important for safety.

When replacing any of these component, use only manufacturer's specified part.

Ref. No.	Part No.	Part Name & Description	Remarks
1	AJD08-129-W	Food pusher	
2	AJD93-129-H	Container cover	
3	AMJ99D-660	Strainer	
4	AJD98-129-W	Container	
5	AJD07-129-W	Spout cover	
6	AJF03-123	Coupler cap	
7	AJF02-108	Coupler nut	
8	AMJ18C-600	Lock washer	
9	AMJ99C-A00	Coupler	
10	AJG04-129-W	Clamp B	
11	AJA02-129-W	Motor housing	
12	AJY02-129-W	Caution label	
13	AJG03-129-W	Clamp A	
14	AJB03-129-S	Switch plate	
15	AJN99J129-A	Switch	
16	AJG94-129	Clamp link B unit	
17	AJG09-129	Spacer	
18	AMJ50G-C30	Seal cap	
19	AJG93-129	Clamp link A unit	
20	AMJ09C-A00	Adjustment washer A	
21	AMU64C-J710	Adjustment washer	
22	AMX56A-980	Motor screw	
23	AMJ26A-530	Rubber washer	
24	AJF11-129	Motor upper cover	
25	AMJ16F-K70-2	Carbon brush	Supplies two by the set.
26	-	-	
27	SMS-293C	AC Motor	
28	AMJ31A-440	Motor support rubber	
29	-	-	
30	AJB98-129-0S	Bottom plate	Foot set
31	AJY03Y129	Name plate	
32	AJB05-108-H	Foot	
33	AJP99-129-W	Power cord	
34	AMJ14Q-F60W	Cleaning brush	
35	AMJ51B-421W	Brush	
36	AVE44-180-X	Cover B	
37	AVE02-180-W	Cover A	
38	AMX03B-R60	Glass container	

39	AMX05B-831	Gasket	
40	AMX21B-G50	Cutting blade	
41	AMX13B-451	Wave washer	
42	AMX27B-692	Washer	
43	AVE86-180-W	Mounting ring	
44	AMX27B-A10	Washer	
45	AMX94B-H10	Connector	
46	AMX61B-L50	Mill container	
47	AMX95B-Q90	Mill cutter	
48	AVE88-180-W	Mounting ring	
SMALL STANDARDIZED METAL PARTS			
A	XTN4+16B	Screw	For switch
B	XTN4+20B	Screw	For bottom plate
C	XTN4+16B	Screw	For clamp unit
E	XUE6FP	U-clip	For motor
F	XUC7FM	E-clip	For clamp
PACKING SPECIFICATIONS			
	AJZ48Y129-0S	Individual carton	POS label set
	AJZ02-129	Carton filler(upper)	
	AJZ03-129	Carton filler(lower)	
	AJZ50-129	Operating instructions	
	AJZ05-108	Protect of cutter	
	AMJ70Z-K60	Protect plate	
	XZB15X55A015	Plastic bag	For cord

[TOP PREVIOUS](#)