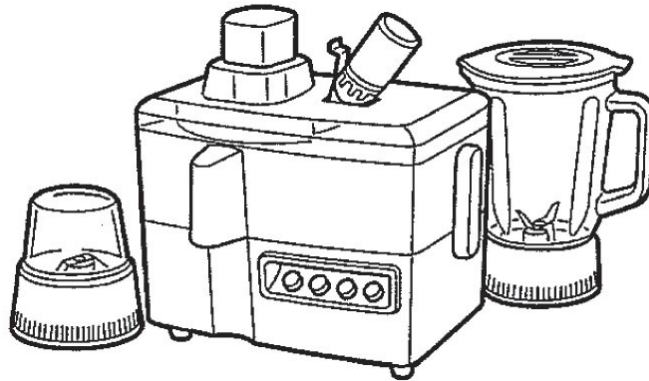


Service Manual

Juicer / Blender
MJ-M176PWTC
MJ-M176PWTZ
MJ-M176PWSG



SPECIFICATION

POWER SOURCE	AC220V~240V 50 - 60Hz	
POWER CONSUMED	210-230W	
ROTATION SPEED	JUICER : 12,000 - 13,100 rpm	BLENDER : 11,700 - 12,700 rpm
SWITCH CONTROL	JUICER : ON/OFF PUSH BUTTON TYPE	BLENDER : 2 SPEED PUSH BUTTON AND PULSE
POWER CORD (U)	QATAR & PERU : 0.9m (WITH C2 PLUG)	KUWAIT & SAUDI ARABIA : 0.9m (WITH S3 PLUG)
DIMENSIONS (H x W x D) JUICER	323 X 288 X 212 mm	
DIMENSIONS (H x W x D) BLENDER	382 X 288 X 171 mm	
DIMENSIONS (H x W x D) MILL	264 X 288 X 171 mm	
NETT WEIGHT (kg) JUICER	3.0Kg	
NETT WEIGHT (kg) BLENDER	3.4Kg	
NETT WEIGHT (kg) MILL	2.6Kg	
RATED CAPACITY BLENDER	1,000ml	
RATED CAPACITY MILL	50g COFFEE BEAN	
CONTAINER MATERIAL BLENDER	GLASS	
ATTACHMENT	CLEANING BRUSH	

WARNING

This service information is designed for experienced repair technicians only and is not designed for use by the general public. It does not contain warnings or cautions to advise non-technical individuals of potential dangers in attempting to service a product. Products powered by electricity should be serviced or repaired only by experienced professional technicians. Any attempt to service or repair the product or products dealt with in this service information by anyone else could result in serious injury or death.

Panasonic

© 2009 Panasonic Manufacturing Malaysia Berhad (6100-K). Unauthorized copying and distribution is a violation of law.

CONTENTS

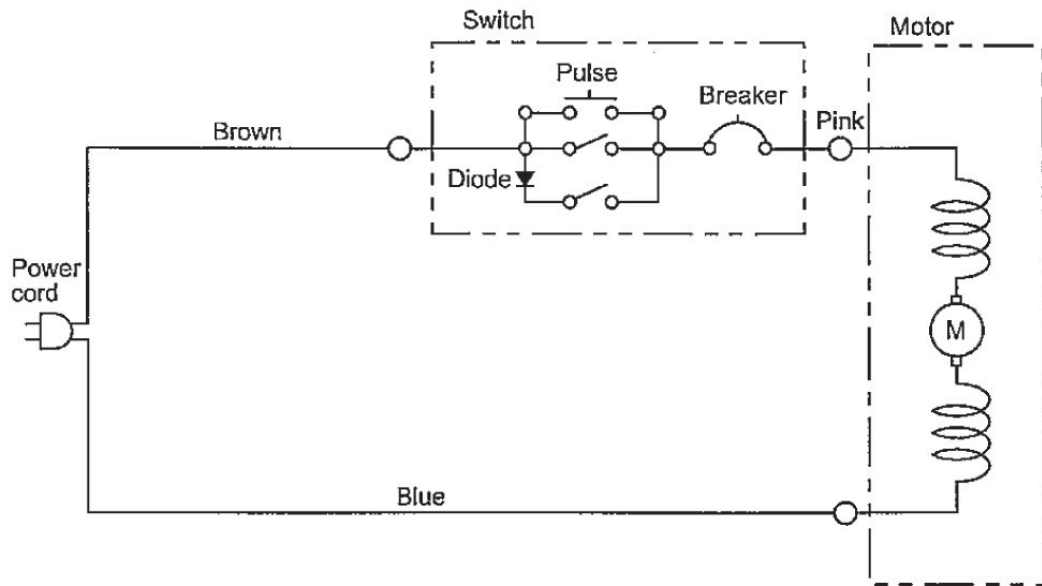
	Page
1 PRECAUTIONS (Strictly follow these instructions)	3
2 SCHEMATIC DIAGRAM	3
3 BASIC WIRING DIAGRAM	3
4 TROUBLESHOOTING GUIDE	4-5
4.1 The Juicer, the Blender commons	
4.1.1 SYMPTOM: Motor doesn't rotate.	
4.1.2 SYMPTOM: Motor "roars" but doesn't rotate. (Turn the switch off immediately)	
4.1.3 SYMPTOM: Motor overheats.	
4.1.4 SYMPTOM: Unusual odor.	
4.2 The Juicer	
4.2.1 SYMPTOM: Motor "roars" but doesn't rotate. (Turn the switch off immediately)	
4.2.2 SYMPTOM: Noise, Vibration.	
4.2.3 SYMPTOM: The spinner is difficult to install and remove.	
4.2.4 SYMPTOM: Juice is poorly extracted.	
4.2.5 SYMPTOM: Juice contains too much residue.	
4.2.6 SYMPTOM: Cutter rubs against inlet bottom	
4.2.7 SYMPTOM: Leakage of juice.	
4.3 The Blender	
4.3.1 SYMPTOM: Cutter won't rotate.	
4.3.2 SYMPTOM: Motor rotates but cutter doesn't rotate.	
4.3.3 SYMPTOM: Noise, Vibration.	
4.3.4 SYMPTOM: Juice leakage.	
5 DISASSEMBLY INSTRUCTIONS	6-9
6 PARTS LOCATION	10
REPLACEMENT PARTS LIST	11
SMALL STANDARDIZED METAL PARTS	12
PACKING SPECIFICATIONS	12

1 PRECAUTIONS (Strictly follow these instructions.)

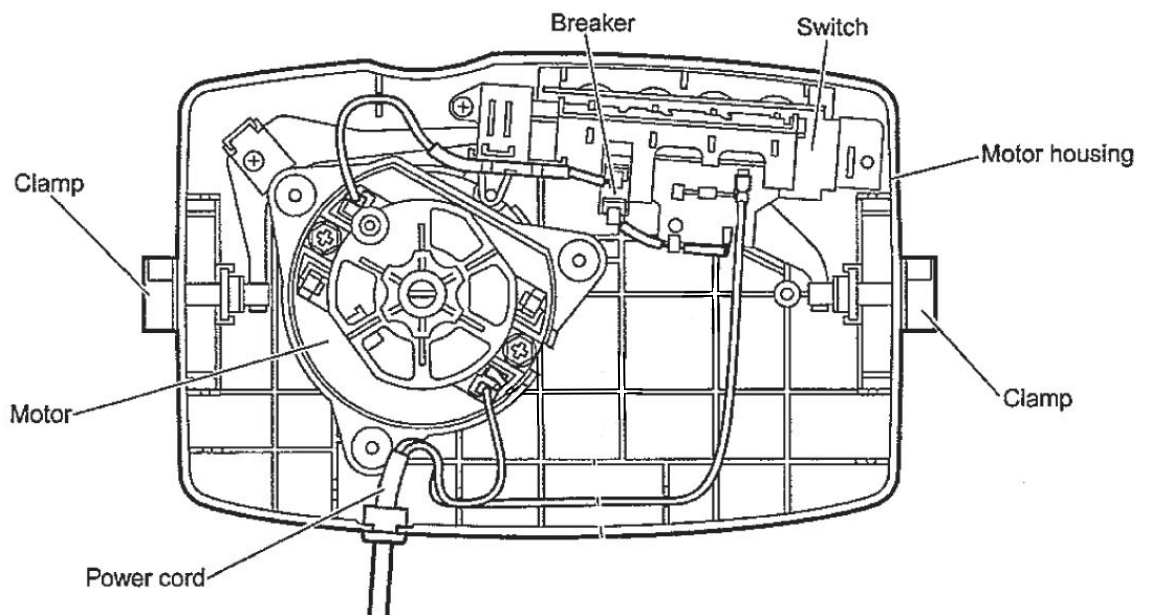
CAUTION

- Maximum capacity : 1,000ml. (Blender)
- Do not crush ice cubes alone.
- Dice solid foods first. Blend with liquid.
- Do not operate blender longer than 3 minutes at one time.
Stop for 1 minutes, then resume.

2 SCHEMATIC DIAGRAM



3 BASIC WIRING DIAGRAM



4 TROUBLESHOOTING GUIDE

4.1. The Juicer, the Blender commons

4.1.1. SYMPTOM : Motor doesn ' t rotate.

Cause	Remedy
Switch malfunction	Replace the switch
Cord cut or disconnected	Replace the cord

4.1.2. SYMPTOM : Motor “ roars ” but doesn ' t rotate.(Turn the switch off immediately.)

Cause	Remedy
Motor bearing rushed	Disassemble and apply oil, or replace the motor

4.1.3. SYMPTOM : Motor overheats.

Cause	Remedy
High voltage	Adjust it
Shorted motor	Replace the motor
Eccentric main shaft gear part	Replace the part
Main shaft is hard to operate	Disassemble and adjust it or replace it
Unloaded operation	Be sure that something is in the container before operating
Overload (rotation is impeded by a hard object, or a high viscosity substance in the container)	Refer to operation

4.1.4. SYMPTOM : Unusual odor

Cause	Remedy
Overheating	Refer to the section concerning overheating of the motor
Liquid leaking into motor	Refer to the section concerning liquid leakage
Motor absorbing moisture	Dry the motor or replace it

4.2. The Juicer

4.2.1. SYMPTOM : Motor “ roars ” but doesn ' t rotate (switch off immediately)

Cause	Remedy
The spinner is contacting bottom of inlet	After removing cutter base, decrease the number of adjustment rings
Foreign materials are clogged between the spinner and the cutter	Remove them
Hard materials or seeds are clogged between the inlet bottom and the cutter	Remove them

4.2.2. SYMPTOM : Noise, vibration

Case	Remedy
Deformation of spinner	Replace the spinner
Residue has collected unevenly	Clean the spinner
Incompletely fastened clasp	Fasten it completely Replace it
The fastening part of the container cover clasp is worn out	Replace the cover
Incompletely fastened back cover	Fasten it completely
Incorrect placement of the main unit	Inspect the rubber feet Use on a level surface

4.2.3. SYMPTOM : The spinner is difficult to install and remove

Cause	Remedy
The clutch pin of the cutter base doesn't operate smoothly	Examine the clutch pin; replace it if necessary
Foreign materials are clogged between the cutter base and the spinner base	Remove them

4.2.4. SYMPTOM : Juice is poorly extracted

Cause	Remedy
Cutter doesn't operate well	Replace complete spinner
Spinner is broken	Replace complete spinner
Continuous use for a long period	Remove the residue
Too large a gap between inlet bottom and cutter blade	Adjust it within the range of 0.5 - 0.9mm

4.2.5. SYMPTOM : Juice contains too much residue

Cause	Remedy
Cutter blade is worn out	Replace the spinner (complete)
Gap between inlet bottom and cutter blade is too large	Use two or three adjusting washers on the motor shaft

4.2.6. SYMPTOM : Cutter rubs against inlet bottom

Cause	Remedy
Gear incompletely engaged between cutter base and spinner	Engage the gear
Too many adjustment rings on the motor shaft	Decrease the number of adjustment rings and adjust the gap within the range of 0.5 - 0.9mm

4.2.7. SYMPTOM : Leakage of juice

Cause	Remedy
Container and/or cover deformed or broken	Replace the container or cover
Incorrect clasp fastening	Examine the clasp; adjust the fastening force
Foreign materials are clogged between the container cover and the container	Clean it and remove them
Excessive vibration	Clean it and adjust the spinner balance

4.3. The blender

4.3.1. SYMPTOM : Cutter won ' t rotate

Cause	Remedy
Main shaft binding	Disassemble and oil, or replace

4.3.2. SYMPTOM : Motor rotates but cutter doesn ' t rotate

Cause	Remedy
Gear is worn out	Replace the gear (cutter base)

4.3.3. SYMPTOM : Noise, vibration

Cause	Remedy
Bad gearing of container and motor	Make the gearing correct
Gear is eccentric (bearing)	Repair or replacement (bearing)
Deformed or broken cutter	Repair or replacement

4.3.4. SYMPTOM : Juice leakage

Cause	Remedy
Broken container	Replace the container
Bad container base	Replace the packing
Loose fastened part	Fasten it tightly
Main shaft is worn out	Replace the main shaft and bearing

(Notes)

Do not attempt to clean parts with boiling water.

Do not attempt to use fire to quickly dry parts.

Orange juice stains, etc. can be removed by using alcohol or detergent. Avoid using volatile substances when cleaning.

5 DISASSEMBLY INSTRUCTIONS

5.1. Coupler(Fig.1)

1. Remove the coupler cap.
2. With the coupler fixed, remove the coupler nut by using a screwdriver.
3. Remove the coupler by pulling it upward.

5.2. Bottom plate and motor(Fig.1)

1. The bottom plate can be detached by removing the 4 setscrews.
2. Pull out the connection terminal of the AC motor. Then the motor can be detached.

5.3. Power cord(Fig.1)

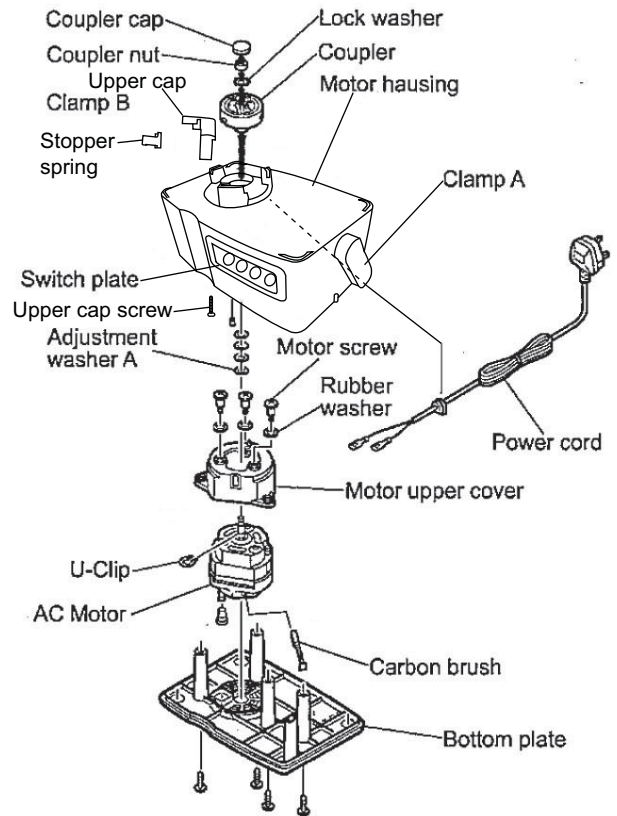
1. Remove the bottom plate.
2. Remove the power cord from the AC motor housing and replace it with new one.

5.4. Clamps A and B(Fig.2)

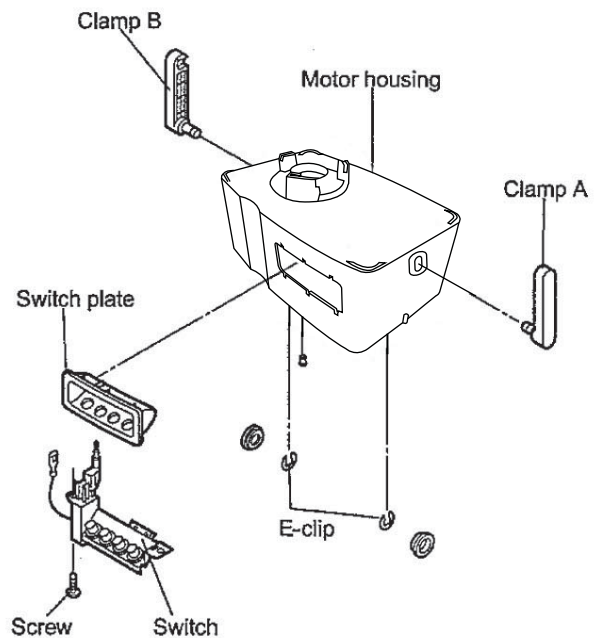
1. Remove the bottom plate.
 2. Detach the E-clip for each clamp.
Then the clamps can be replaced.
- Clamps A and B are marked with "A" and "B" on the rear side respectively. Therefore, check the marks and install the clamps A and B in correct positions.

5.5. Switch, Switch plate(Fig.2)

1. Remove the bottom plate.
2. Remove the 1 setscrew of the switch.
3. Pull out the connection terminal of the switch.
4. To remove the switch plate, remove the switch beforehand.
Next, remove the two claws of the switch plate out of the motor housing.



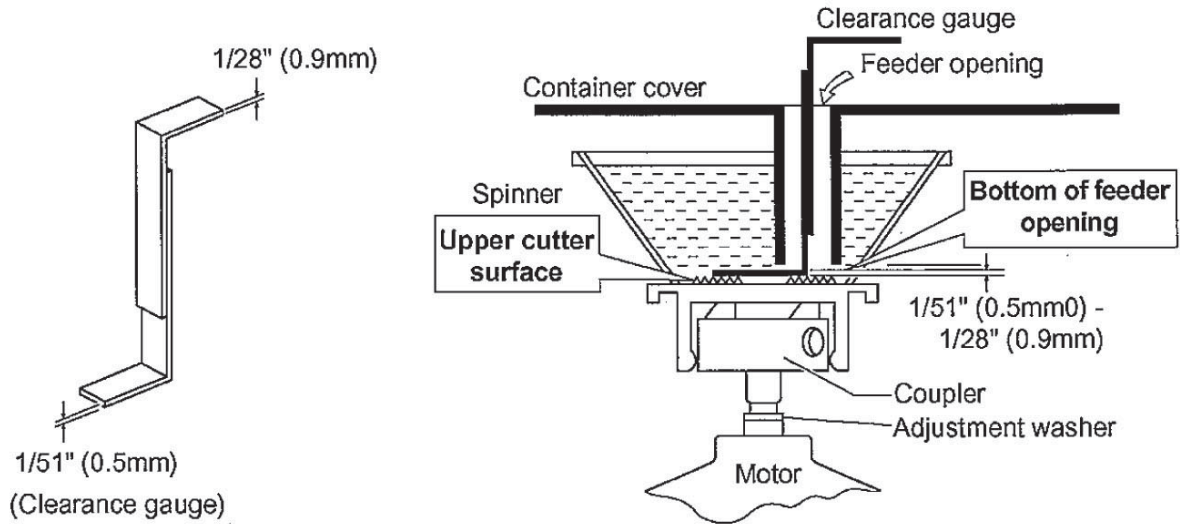
(Fig.1)



(Fig.2)

5.6. Clearance adjustment (Fig.3)

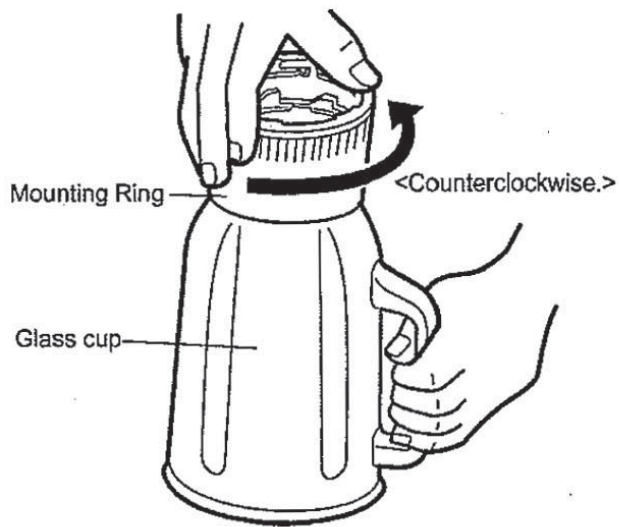
1. Insert the clearance gauge between the upper cutter surface of spinner (extractor) and the bottom of feeder opening. (Fig.3)
2. when the thinner side ($1/51'' \dots 0.5\text{mm}$) can be inserted and the thicker side ($1/28'' \dots 0.9\text{mm}$) cannot, the clearance is appropriate.
3. If the thicker side ($1/28'' \dots 0.9\text{mm}$) can be inserted, the clearance is too large.
In that case, remove the coupler and add some adjustment washers onto the motor shaft.
4. In the thinner side ($1/51'' \dots 0.5\text{mm}$) cannot be inserted, the clearance is too narrow.
In that case, remove the coupler and take off some adjustment washers from the motor shaft.



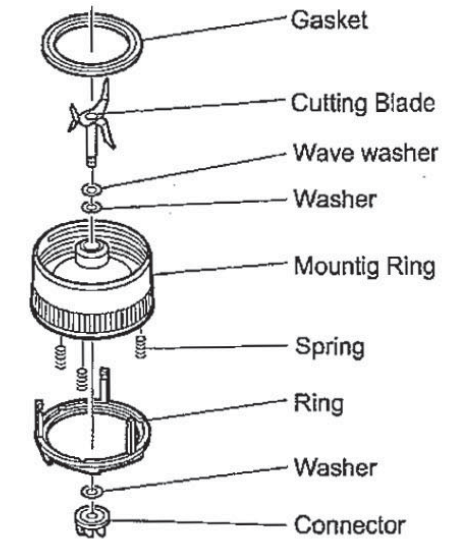
(Fig.3)

5.7. Glass container and cutting blade(Fig.4, 5, 6)

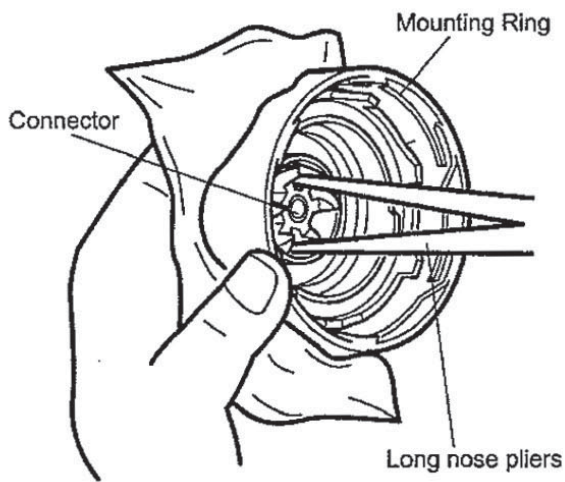
1. Remove the cover, then turn the glass container up-sidedown.
 2. Secure the glass cup and turn the mounting ring counterclockwise.(Fig.4)
 3. The gasket (upper) can be removed.
 4. Wrap the cutting blade with a cloth for protection and secure it.
 5. Turn the upper connector clockwise with long nose pliers.
- Then the cutting blade, and upper connector can be removed.(Fig.5)
- The parts can be assembled by reversing the disassembly procedure.



(Fig.4)



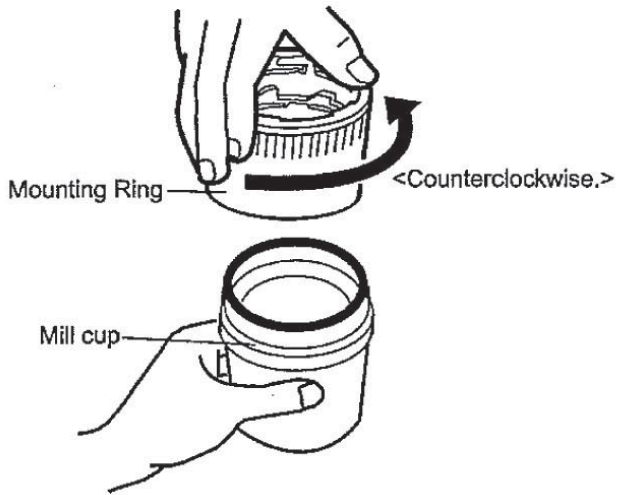
(Fig.6)



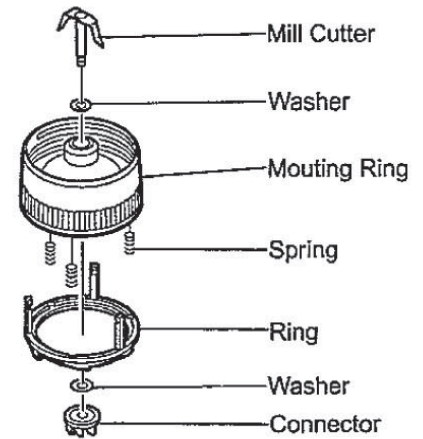
(Fig.5)

5.8. Mill container and mill cutter(Fig.7, 8, 9)

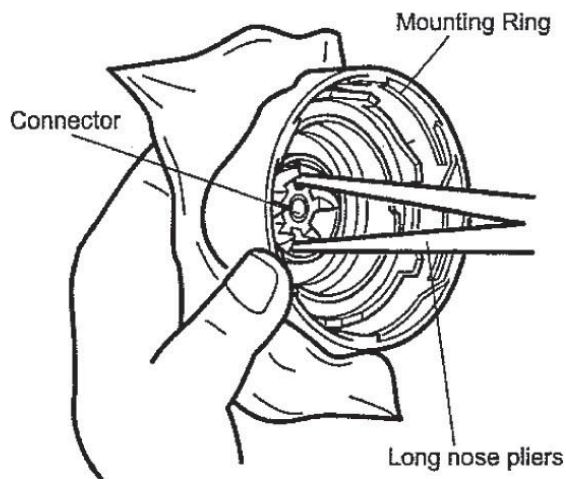
1. Remove the cover, then turn the mill container up-sidedown.
 2. Secure the glass cup and turn the mounting ring counterclockwise.(Fig.7)
 3. Wrap the cutting blade with a cloth for protection and secure it.
 4. Turn the upper connector clockwise with long nose pliers.
- Then the mill cutter, and upper connector can be removed.(Fig.8)
- The parts can be assembled by reversing the disassembly procedure.



(Fig.7)

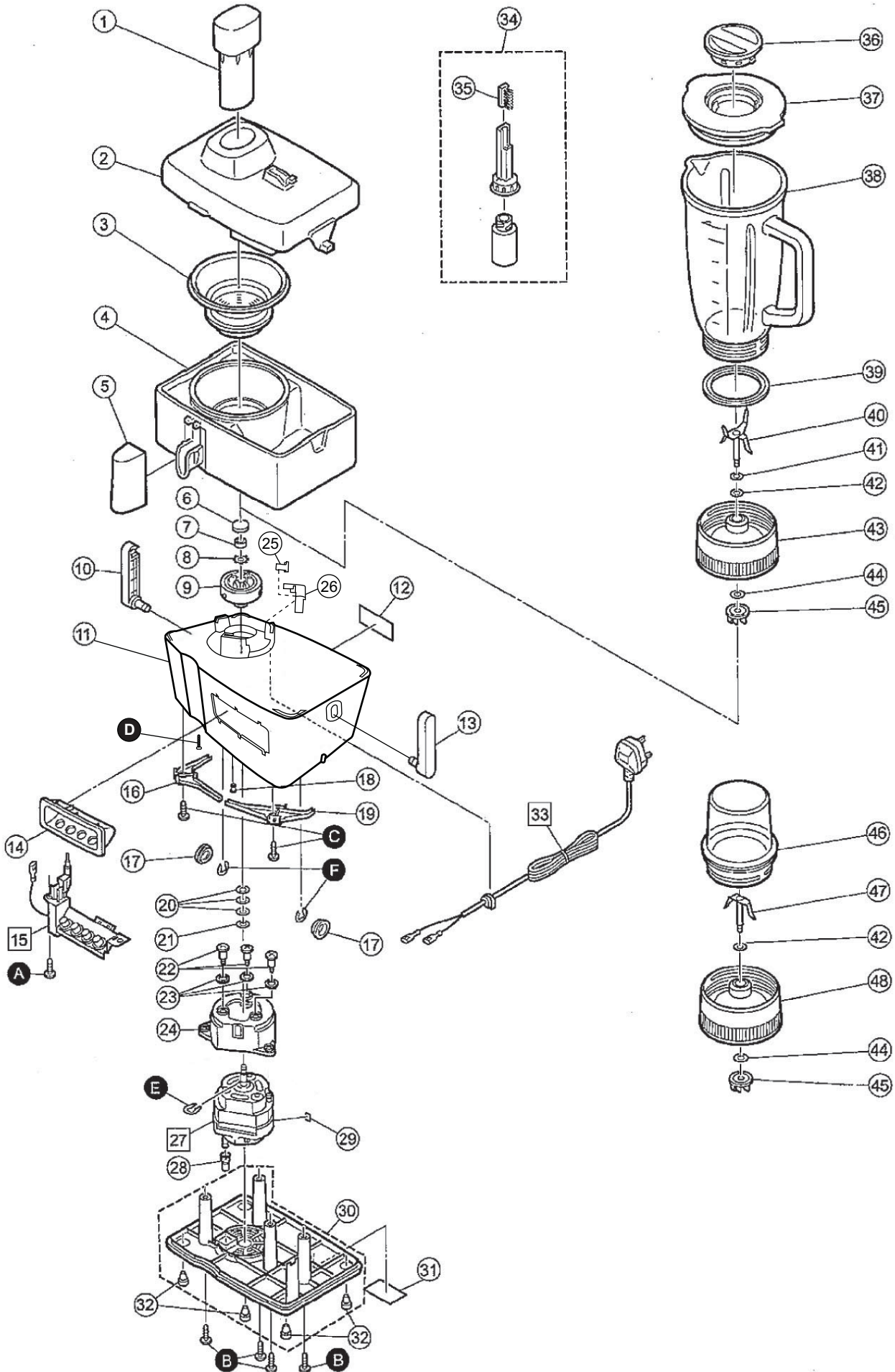


(Fig.9)



(Fig.8)

6 PARTS LOCATION



REPLACEMENT PARTS LIST

REF. NO.	SAFETY PART	PART NAME	PART NO.	QTY	REMARKS
1		PLUNGER	AJD08-129-W4	1	
2		CONTAINER LID UNIT ASSY	AJD93-142-H2	1	
3	△	SPINNER COMPLETE	AJ08QK5200	1	
4		CONTAINER UNIT ASSY	AJD98-142-W4	1	
5		SPOUT COVER	AJD07-1291W4	1	
6		CONNECTOR INSULATION RUBBER	AJF03-123	1	
7		NUT	AJF02M1141	1	
8		TOOTH LOCK WASHER	AJJ03M1141	1	
9		CONNECTOR COMPLETE	AJ07QA0600	1	
10		CLAMP B	AJG04-1291W4	1	
11		MOTOR HOUSING UNIT	AJA02-142-W4	1	
12	△	CAUTION LABEL	AJY02-1291	1	QATAR, KUWAIT, SAUDI ARABIA
12	△	CAUTION LABEL	AJY02P142	1	PERU
13		CLAMP A	AJG03-1291W4	1	
14		SWITCH PLATE	AJB03-1293S0	1	
15	△	SWITCH	AJN99J1294A0	1	
15	△	SWITCH	AJN99J1295A0	1	
16		CLAMP LINK B	AJG94-1292	1	
17		SPACER	AJG09-1291	2	
18		SEAL CAP	AVB18M216	1	
19		CLAMP LINK A	AJG93-1292	1	
20		ADJUSMENT WASHER A	AJJ01M114	2	
21		ADJUSMENT WASHER B	AJJ02M114	3	
22		MOTOR SCREW	X56A98200	3	
23		MOTOR SCREW RUBBER	AJ26A53000	3	
24		MOTOR COVER	AJF11-1292	1	
25		UPPER CAP	AJB04-142-W4	1	
26		STOPPER SPRING	AJG01-142	1	
27	△	MOTOR	SMS293C2	1	220 - 240V
28		BOTTOM RUBBER	AJ31A44200	1	
29		N LABEL	AJY07-1291	1	KUWAIT, SAUDI ARABIA
30		BOTTOM PLATE	AJB02-142-W4	1	
31	△	NAME PLATE	AJY03Y142	1	QATAR
31	△	NAME PLATE	AJY03J142	1	KUWAIT, SAUDI ARABIA
31	△	NAME PLATE	AJY03P142	1	PERU
32		FOOT	AJ33A53000	4	
33	△	POWER CORD (C2)	AJP99-129-W0	1	QATAR. PERU.
33	△	POWER CORD (S3)	AJP99J129-W0	1	KUWAIT, SAUDI ARABIA
34		BRUSH COMPLETE	AJ14QF6200	1	
35		BRUSH	AJ51B42100	1	
36		INNER LID	AVE44-180-X0	1	
37		OUTER LID	AVE02-1801W4	1	
38		CUP (GLASS)	AX03BR6300	1	
39		UPPER GASKET	AX05B83100	1	
40	△	CUTTING BLADE UNIT	AX95BG5200	1	
41		WAVE WASHER	AX13B451000	1	
42		SHAFT WASHER (B)	AX27B69200L	2	
43		MOUNTING RING ASSY	AVE86-219-W4	1	
44		SHAFT WASHER	AX27BA1000L	1	
45		CONNECTOR UPPER	AMX94BH1100	1	
46		MILL CUP (GLASS)	AX61BL5000	1	
47	△	MILL CUTTER BLADE UNIT	AX95BQ9300	1	
48		MILL MOUNTING RING	AVA88-219-W4	1	

SMALL STANDARDIZED METAL PARTS

REF. NO.	SAFETY PART	PART NAME	PART NO.	QTY	REMARKS
A		TAPPING SCREW	XTN4+16BFJ	1	
B		PAN HEAD TAPPING SCREW	XTN4+20BFJ	4	
C		TAPPING SCREW	XTN4+16BFJ	2	
D		TAPPING SCREW	XTN4+16BFJ	1	
E		U-CLIP	XUE6FP	1	
F		E-CLIP	XUC7FJ	1	

PACKING SPECIFICATIONS

REF. NO.	SAFETY PART	PART NAME	PART NO.	QTY	REMARKS
		CARTON BOX	AJZ49J142	1	
		TOP CUSHION	AJZ02-142	1	
		BOTTO CUSHOIN	AJZ03-142	1	
	△	OPERATING INSTRUCTION	AJZ50Y142	1	QATAR, KUWAIT, SAUDI ARABIA
	△	OPERATING INSTRUCTION	AJZ50P142	1	PERU
		SPINNER PAD	AJZ05-1082	1	
		AIR BUBBLE SHEET	AJ70ZK6100	1	