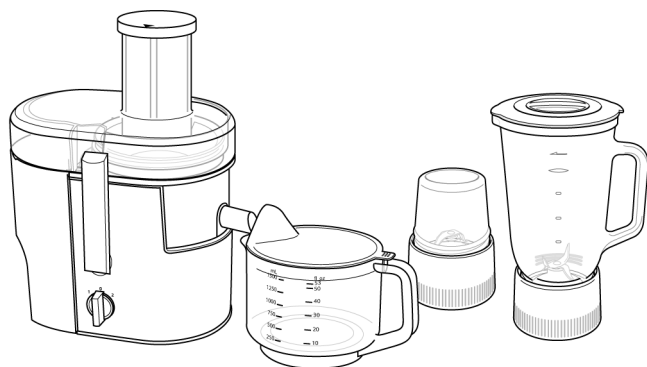


Service Manual

Juicer/Blender



Model No. **MJ-DJ31SRA-VN**

MJ-DJ31SSD-HK

MJ-DJ31SSL-MY

MJ-DJ31SSP-SG

MJ-DJ31SST-AU

MJ-DJ31SST-NZ

MJ-DJ31STN-AE

MJ-DJ31STN-OM

MJ-DJ31STN-QA

MJ-DJ31STQ-KZ

MJ-DJ31STQ-RU

MJ-DJ31STQ-UR

MJ-DJ31STZ-AE

MJ-DJ31STZ-KW

MJ-DJ31STZ-SA

Destination : HONGKONG, VIETNAM, SINGAPORE,
MALAYSIA, AUSTRALIA, NEW
ZEALAND, SAUDI ARABIA, UAE,
KUWAIT, OMAN, QATAR, KAZAKH-
STAN, RUSSIA, UKRAINE

⚠ WARNING

This service information is designed for experienced repair technicians only and is not designed for use by the general public. It does not contain warnings or cautions to advise non-technical individuals of potential dangers in attempting to service a product. Products powered by electricity should be serviced or repaired only by experienced professional technicians. Any attempt to service or repair the product or products dealt with in this service information by anyone else could result in serious injury or death.

IMPORTANT SAFETY NOTICE

There are special components used in this equipment which are important for safety. These parts are marked by **⚠** in the Schematic Diagrams, Circuit Board Diagrams, Exploded Views and Replacement Parts List. It is essential that these critical parts should be replaced with manufacturer's specified parts to prevent shock, fire or other hazards. Do not modify the original design without permission of manufacturer.

Panasonic®

© 2014 Panasonic Manufacturing Malaysia Berhad (6100-K). Unauthorized copying and distribution is a violation of law.

TABLE OF CONTENTS

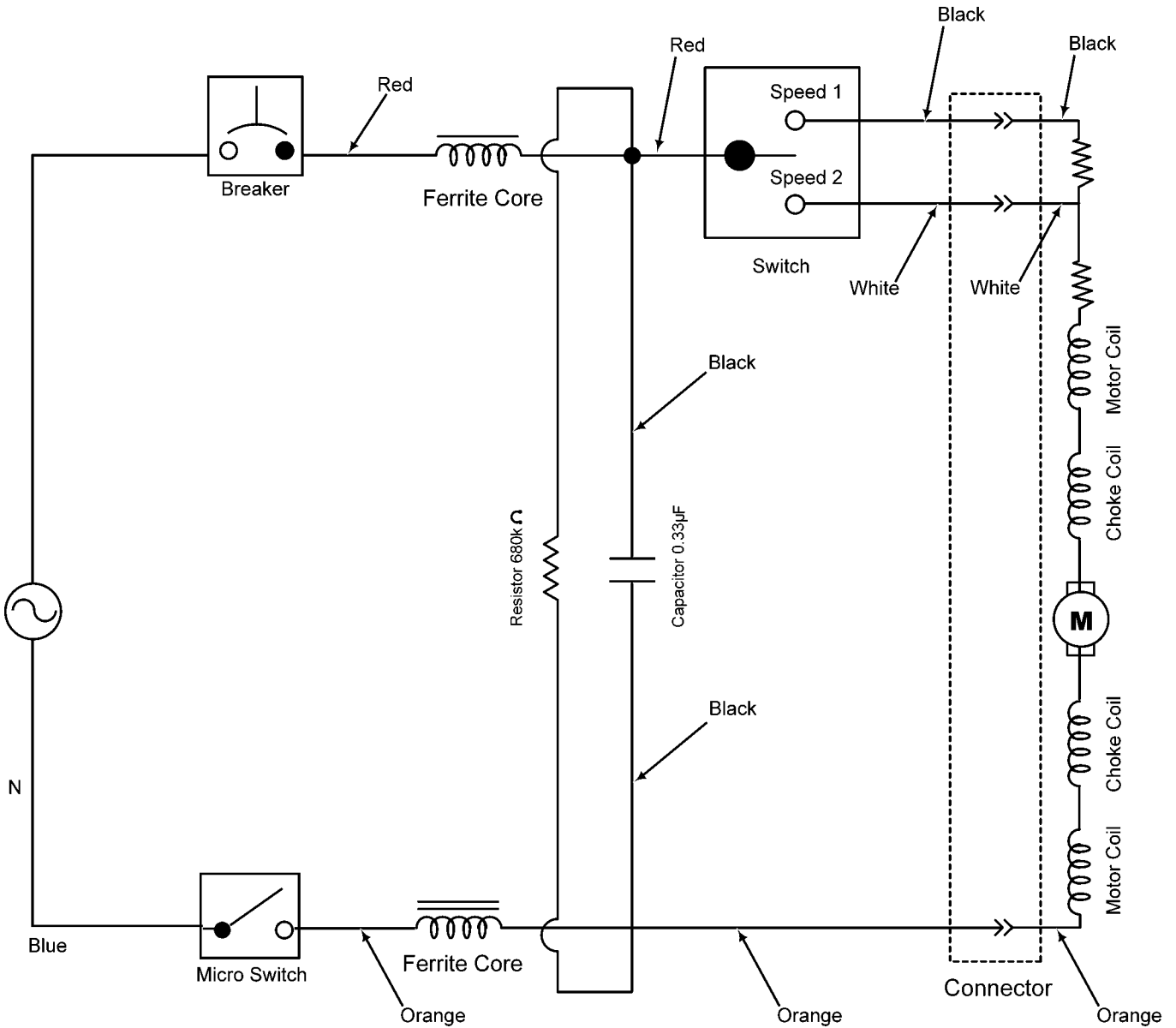
	PAGE	PAGE
1 Specifications	3	
2 Schematic Diagram	3	
2.1. With EMC	3	
2.2. Without EMC	4	
3 Basic Wiring Diagram	4	
4 Troubleshooting Guide	5	
4.1. The Juicer commons	5	
4.2. The Juicer.....	5	
5 Disassembly Instructions	7	
5.1. Disassembly Procudere	7	
5.2. Clearance Adjustment (Fig.3).....	10	
5.3. Glass Container and Cutting Blade (Fig.4, 5, 6)	11	
5.4. Mill Container and Mill Cutter (Fig.7, 8, 9)	12	
6 Exploded View and Replacement Parts List	13	
6.1. Exploded View	13	
6.2. Replacement Parts List.....	14	

1 Specifications

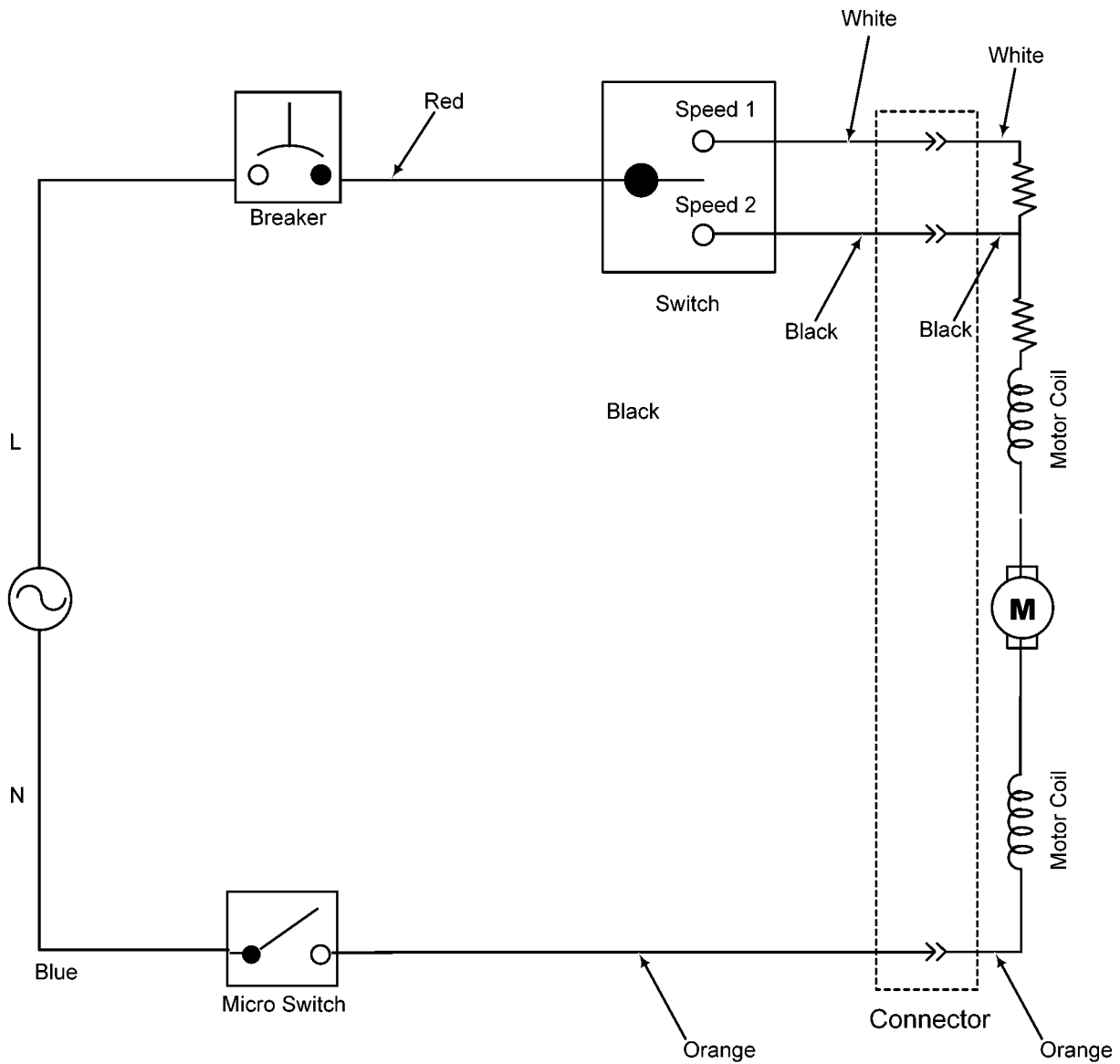
MODEL	MJ-DJ31SSD-HK	MJ-DJ31SRA-VN, MJ-DJ31SSL-MY, MJ-DJ31SSP-SG, MJ-DJ31SST-AU, MJ-DJ31SST-NZ, MJ-DJ31STN-AE, MJ-DJ31STN-OM, MJ-DJ31STN-QA, MJ-DJ31STQ-KZ, MJ-DJ31STQ-RU, MJ-DJ31STQ-UR, MJ-DJ31STZ-AE, MJ-DJ31STZ-KW, MJ-DJ31STZ-SA
Power supply	220 V ~ 50-60 Hz	220 V - 240 V ~ 50-60 Hz
Power consumption	240 W	240 - 270 W
Operation rating	Continuous {Repetition 2 min. ON, 2 min. OFF}	
Dimensions(HxWxD) (approx.)	384 mm x 216 mm x 305 mm	
Weight (approx.)	4.1 kg	4.4 kg
Attachments	1.5 L Juice Cup, 2.0 L Pulp Container	
Rotary switch	2 Speed	

2 Schematic Diagram

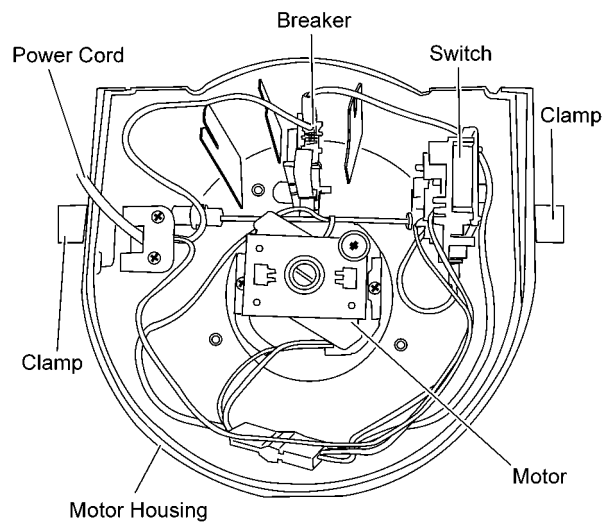
2.1. With EMC



2.2. Without EMC



3 Basic Wiring Diagram



4 Troubleshooting Guide

4.1. The Juicer commons

4.1.1. SYMPTOM : Motor doesn't rotate

Cause	Remedy
Switch malfunction	Replace the switch
Cord cut or disconnected	Replace the cord

4.1.2. SYMPTOM : Motor "roars" but doesn't rotate. (Turn the switch off immediately)

Cause	Remedy
Motor bearing rushed	Disassemble and apply oil, or replace the motor

4.1.3. SYMPTOM : Motor overheats

Cause	Remedy
High voltage	Adjust it
Shorted motor	Replace the motor
Unloaded operation	Be sure that something is in the container before operating
Overload (rotation is impeded by a hard object, or a high viscosity substance in the container)	Refer to operation

4.1.4. SYMPTOM : Unusual odor

Cause	Remedy
Overheating	Refer to the section concerning overheating of the motor
Liquid leaking into motor	Refer to the section concerning liquid leakage
Motor absorbing moisture	Dry the motor or replace it

4.2. The Juicer

4.2.1. SYMPTOM : Motor "roars" but doesn't rotate. (Switch off immediately)

Cause	Remedy
The spinner is contacting bottom of inlet	After removing cutter base, decrease the number of adjustment rings
Foreign materials are clogged between the spinner and the cutter	Remove them
Hard materials or seeds are clogged between the inlet bottom and the cutter	Remove them

4.2.2. SYMPTOM : Noise, vibration

Case	Remedy
Deformation of spinner	Replace the spinner
Residue has collected unevenly	Clean the spinner
Incompletely fastened clasp	Fasten it completely Replace it
The fastening part of the container cover clasp is worn out	Replace the cover
Incompletely fastened back cover	Fasten it completely
Incorrect placement of the main unit	Inspect the rubber feet Use on a level surface

4.2.3. SYMPTOM : The spinner is difficult to install and remove

Cause	Remedy
The clutch pin of the cutter base doesn't operate smoothly	Examine the clutch pin; replace it if necessary
Foreign materials are clogged between the cutter base and the spinner base	Remove them

4.2.4. SYMPTOM : Juice is poorly extracted

Cause	Remedy
Cutter doesn't operate well	Replace complete spinner
Spinner is broken	Replace complete spinner
Continuous use for a long period	Remove the residue
Too large a gap between inlet bottom and cutter blade	Adjust it within the range of 1.0 - 1.4mm

4.2.5. SYMPTOM : Juice contains too much residue

Cause	Remedy
Cutter blade is worn out	Replace the spinner (complete)
Gap between inlet bottom and cutter blade is too large	Use two or three adjusting washers on the motor shaft

4.2.6. SYMPTOM : Cutter rubs against inlet bottom

Cause	Remedy
Gear incompletely engaged between cutter base and spinner	Engage the gear
Too many adjustment rings on the motor shaft	Decrease the number of adjustment rings and adjust the gap within the range of 1.0 - 1.4mm

4.2.7. SYMPTOM : Leakage of juice

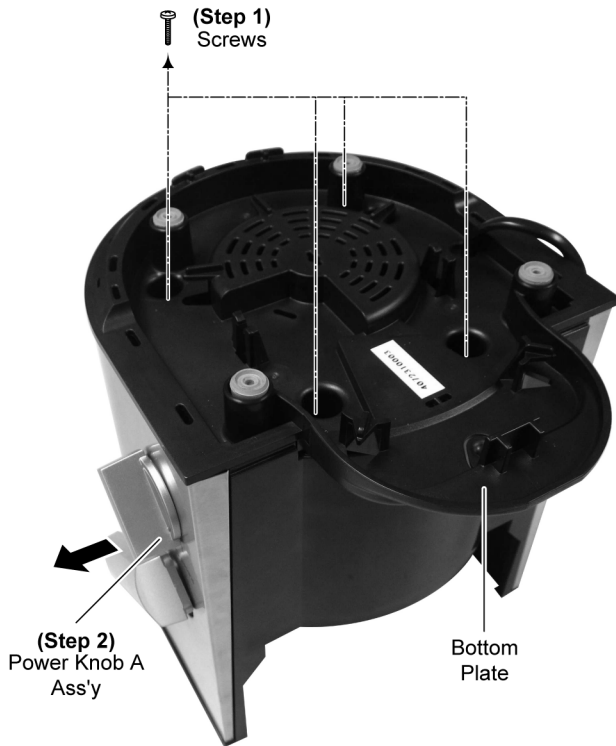
Cause	Remedy
Container and/or cover deformed or broken	Replace the container or cover
Incorrect clasp fastening	Examine the clasp; adjust the fastening force
Foreign materials are clogged between the container cover and the container	Clean it and remove them
Excessive vibration	Clean it and adjust the spinner balance

5 Disassembly Instructions

5.1. Disassembly Procedure

Step 1 Unscrew 4 screws from Bottom Plate.

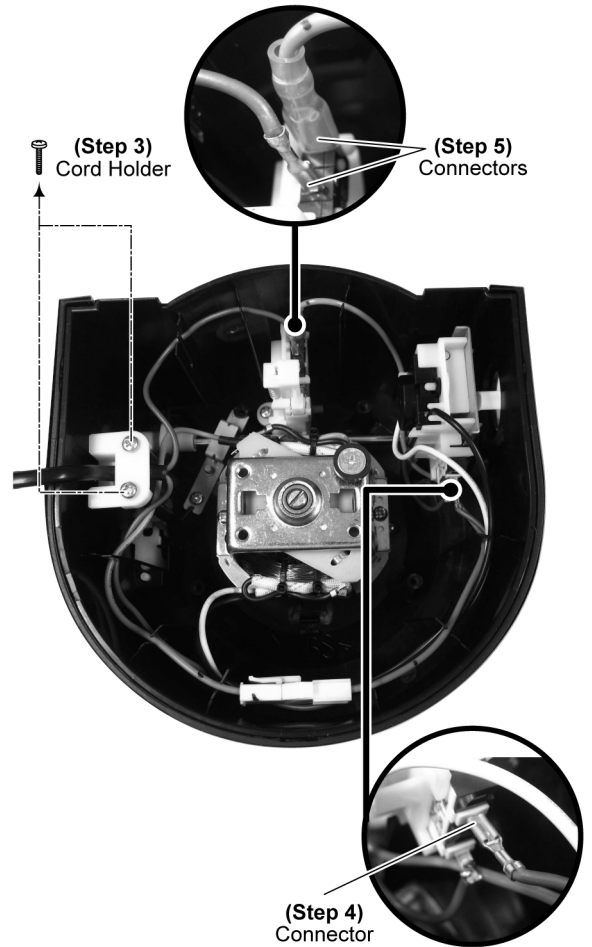
Step 2 Remove Power Knob A Assy.



Step 3 Unscrew 2 screws from Cord Holder.

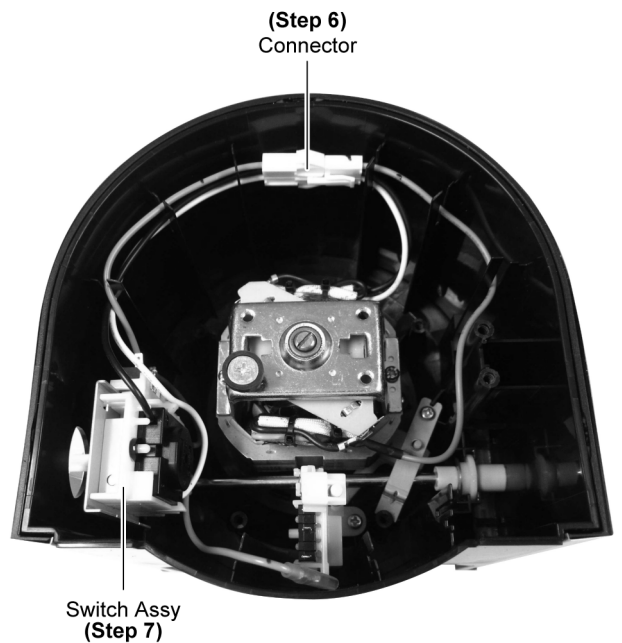
Step 4 Detach Connector.

Step 5 Detach Connectors.

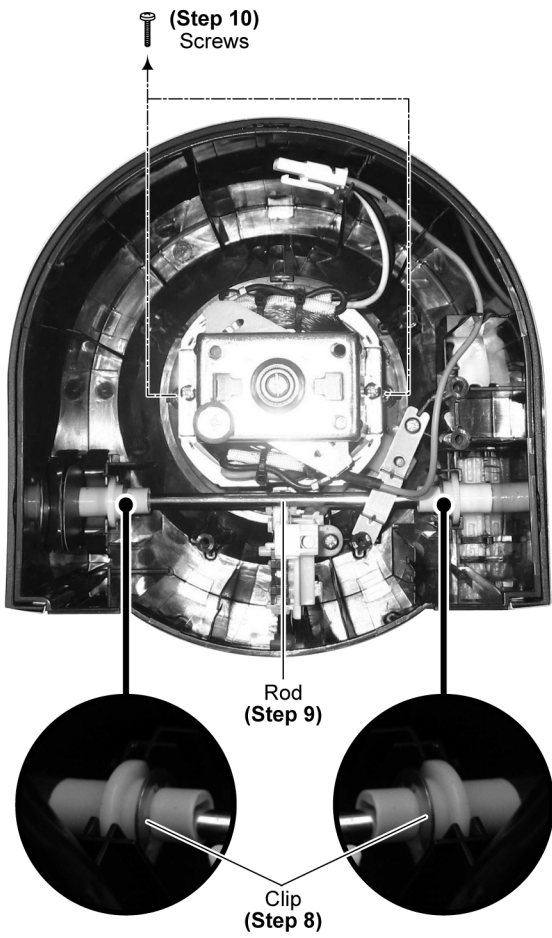


Step 6 Detach Connector.

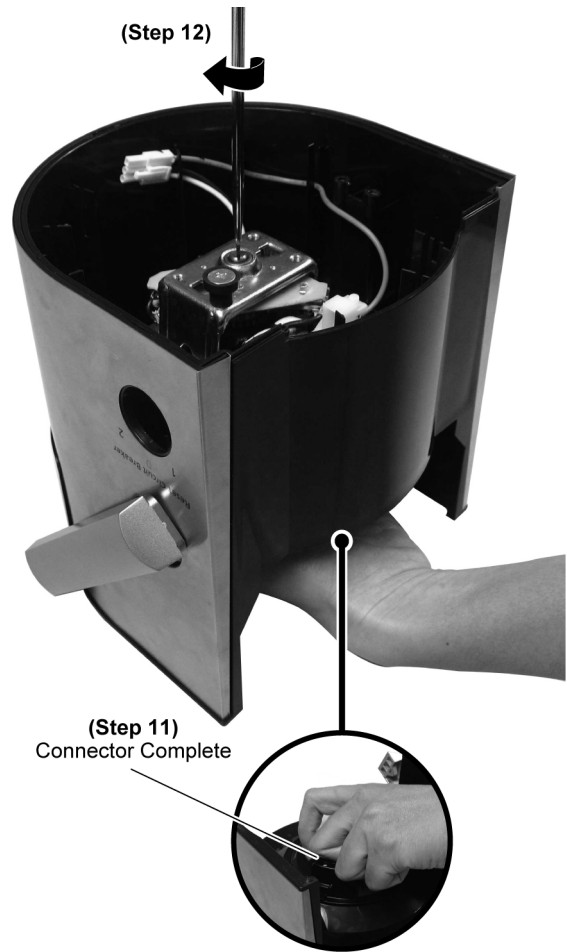
Step 7 Remove Switch Assy.



- Step 8** Release Clip.
- Step 9** Release Rod.
- Step 10** Unscrew 2 screws.



- Step 11** Hold Connector Complete.
- Step 12** Unscrew with screwdriver.



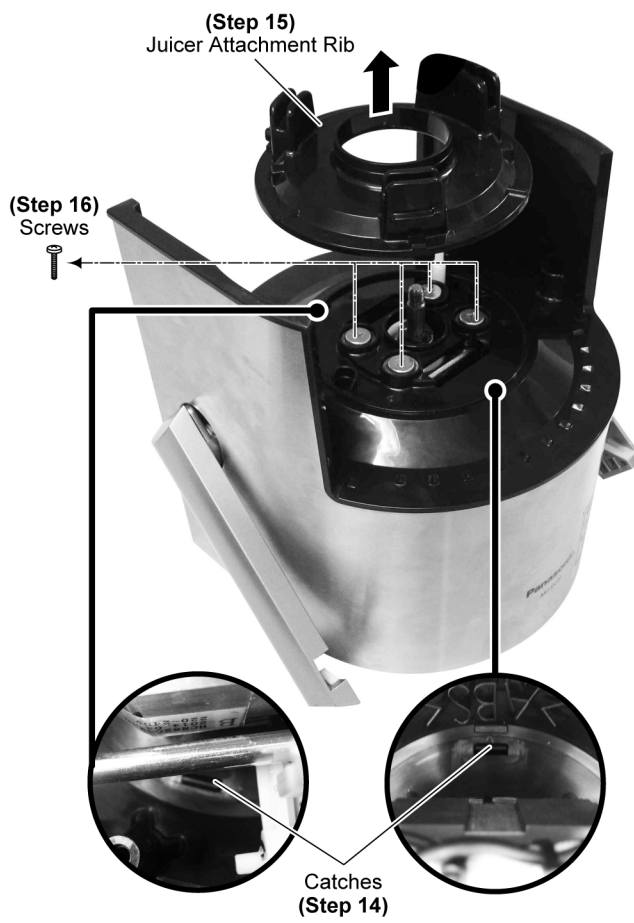
- Step 13** Remove Connector Complete.



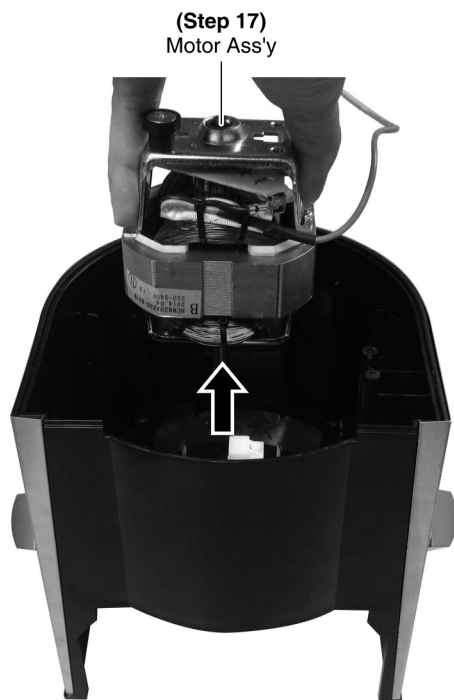
Step 14 Release Catches.

Step 15 Remove Juicer Attachment Rib.

Step 16 Unscrew 4 screws.

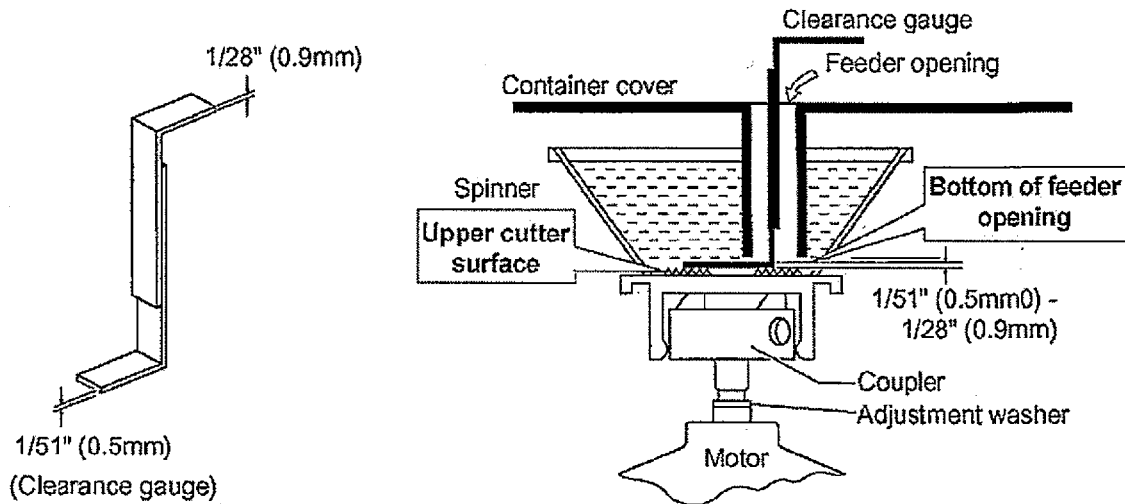


Step 17 Remove Motor Ass'y.



5.2. Clearance Adjustment (Fig.3)

1. Insert the clearance gauge between the upper cutter surface of spinner (extractor) and the bottom of feeder opening. (Fig.3)
2. When the thinner side (1/51" ... 0.5mm) can be inserted and the thicker side (1/28" ... 0.9mm) cannot, the clearance is appropriate.
3. If the thicker side (1/28" ... 0.9mm) can be inserted, the clearance is too large.
In that case, remove the coupler and add some adjustment washers onto the motor shaft.
4. If the thinner side (1/51" ... 0.5mm) cannot be inserted, the clearance is too narrow.
In that case, remove the coupler and take off some adjustment washers from the motor shaft.

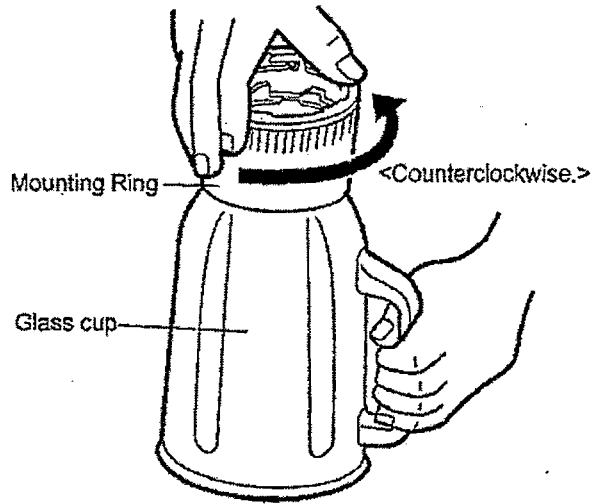


(Fig.3)

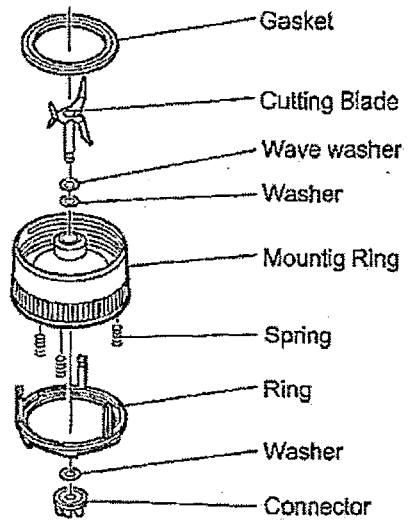
5.3. Glass Container and Cutting Blade (Fig.4, 5, 6)

1. Remove the cover, then turn the glass container up-sidedown.
2. Secure the glass cup and turn the mounting ring counterclockwise. (Fig.4)
3. The gasket (upper) can be removed.
4. Wrap the cutting blade with a cloth for protection and secure it.
5. Turn the upper connector clockwise with long nose pliers.

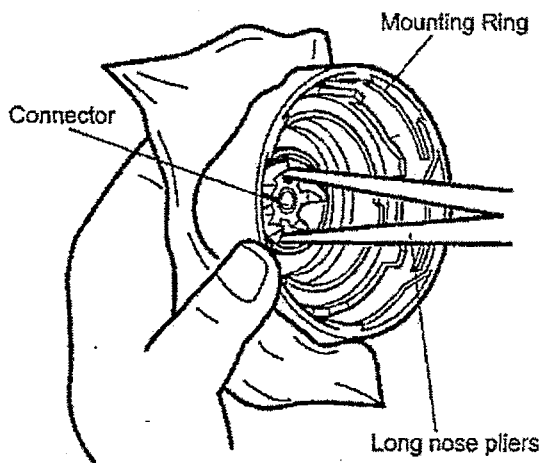
Then the cutting blade, and upper connector can be removed. (Fig.5)
• The parts can be assembled by reversing the disassembly procedure.



(Fig.4)



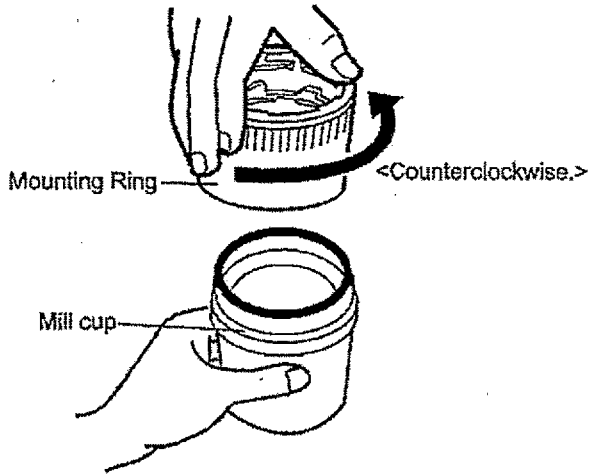
(Fig.6)



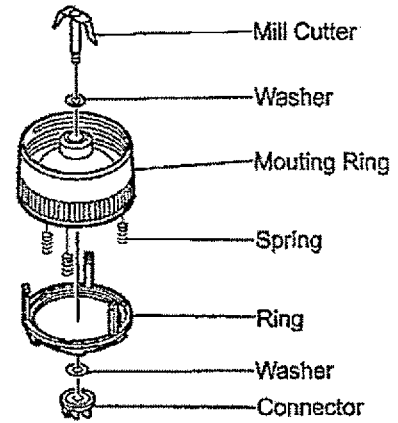
(Fig.5)

5.4. Mill Container and Mill Cutter (Fig.7, 8, 9)

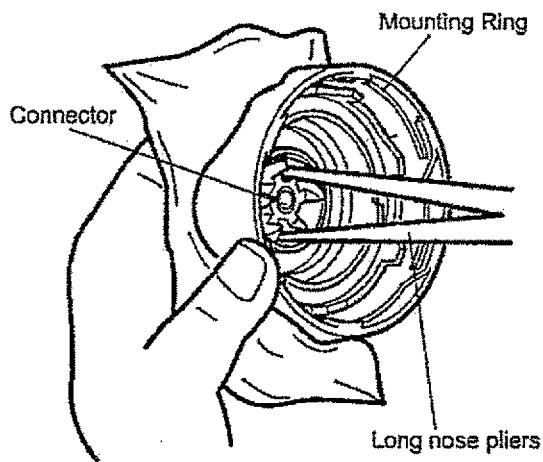
1. Remove the cover, then turn the mill container up-sidedown.
 2. Secure the glass cup and turn the mounting ring counterclockwise. (Fig.7)
 3. Wrap the cutting blade with a cloth for protection and secure it.
 4. Turn the upper connector clockwise with long nose pliers.
- When the mill cutter and upper connector can be removed. (Fig.8)
- The parts can be assembled by reversing the disassembly procedure.



(Fig.7)



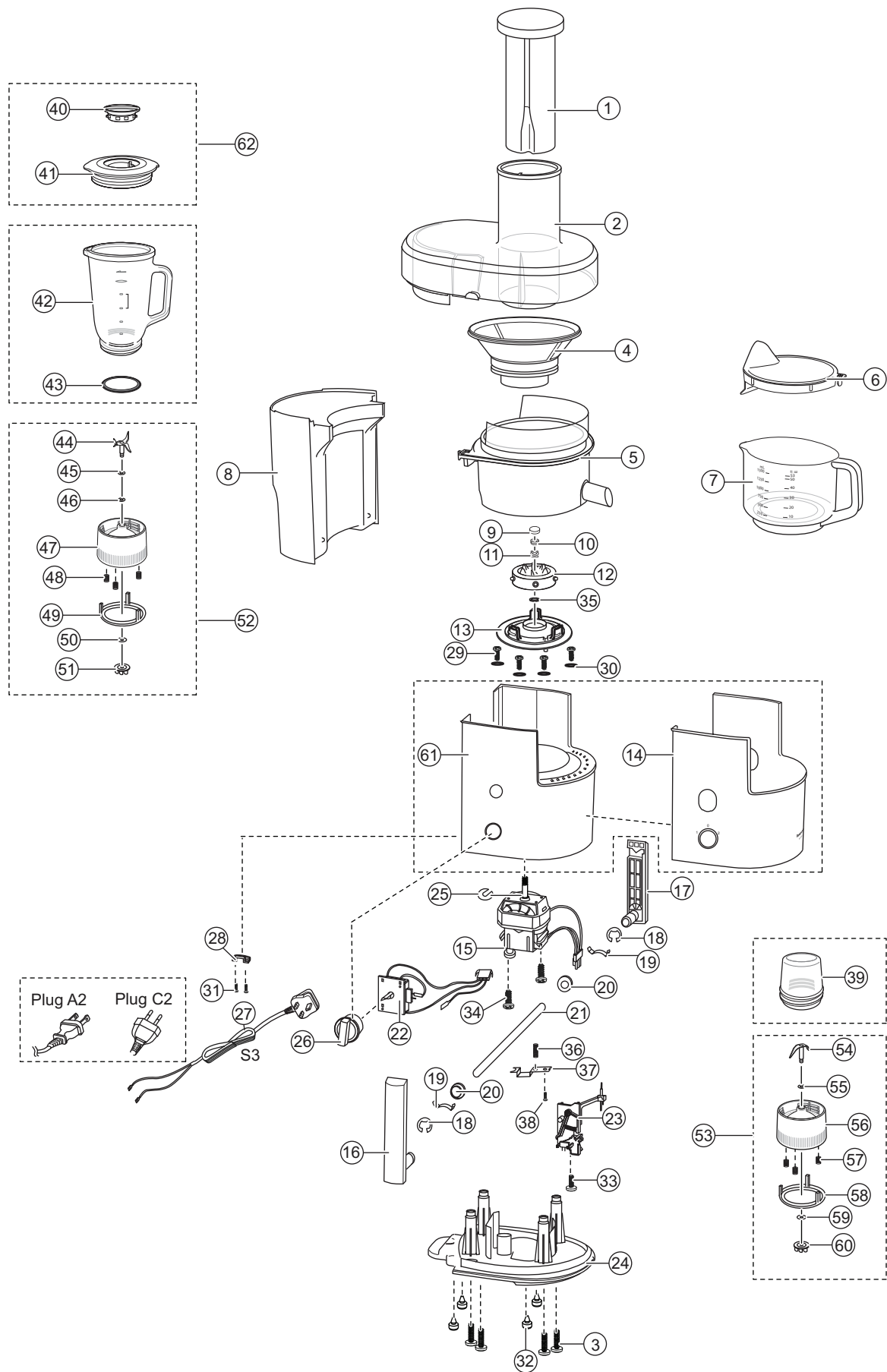
(Fig.9)



(Fig.8)

6 Exploded View and Replacement Parts List

6.1. Exploded View



6.2. Replacement Parts List

Safety	Ref. No.	Part No.	Part Name & Description	Qty	Remarks
			REPLACEMENT PARTS LIST		
	1	AJD58-151-K0	PLUNGER UNIT	1	
	2	AJD89P1512K0	CONTAINER LID UNIT	1	MALAYSIA
	3	AJJ12-1511	STAR SHAPE SCREW	4	
△	4	AJA04-154	SPINNER COMPLETE	1	
	5	AJD98P1515K0	CONTAINER ASSY	1	
	6	AJD87-151-K0	JUICE CUP COVER UNIT	1	
	7	AJD05-1511X0	JUICE CUP	1	
	7	AJD05-154-X0	JUICE CUP	1	EXCEPT MALAYSIA
	8	AJD24-151-K0	PULP CONTAINER	1	
	9	AJF03-123	CONNECTOR INSULATION RUBBER	1	
	10	AJF02M1141	NUT	1	
	11	AJJ03M1141	TOOTH LOCK WASHER	1	
	12	AJ07QA0700	CONNECTOR COMPLETE	1	
	13	AJA14-154-K0	BLENDER ATTACHMENT RIB	1	
	14	AJA94E154-K0	MOTOR HOUSING PANEL ASS'Y	1	VIETNAM, HONG KONG, SINGAPORE, AUSTRALIA, NEW ZEALAND, UAE, OMAN, QATAR, KUWAIT, SAUDI ARABIA, MALAYSIA
	14	AJA94K154-K0	MOTOR HOUSING PANEL ASS'Y	1	KAZAKHSTAN, RUSIA, UKRINE
△	15	AHC8820A230601B	MOTOR ASS'Y	1	MALAYSIA, VIETNAM, SINGAPORE, UAE, OMAN, QATAR, KUWAIT, SAUDI ARABIA
△	15	AHC8820A230601	MOTOR ASS'Y	1	HONG KONG, AUSTRALIA, NEW ZEALAND, KAZAKHSTAN, RUSIA, UKRINE
	16	AJG98-151-S2	CLAMP B UNIT	1	
	17	AJG99-1511S2	CLAMP A UNIT	1	
	18	XUC9FJ	E-RING	2	
	19	AJG05-151	CLAMP SPRING	2	
	20	AJG09-151	SPACER	2	
	21	AJG06-151	CLAMP SHAFT	1	
△	22	AJN96V154	COMPLETE SWITCH ASS'Y	1	MALAYSIA, VIETNAM, QATAR, SAUDI ARABIA
△	22	AJN96V1512	COMPLETE SWITCH ASS'Y	1	SINGAPORE.OMAN, KUWAIT
△	22	AJN96K1512	COMPLETE SWITCH ASS'Y	1	AUSTRALIA, NEW ZEALAND, KAZAKHSTAN
△	22	AJN96K154	COMPLETE SWITCH ASS'Y	1	HONG KONG, UAE, RUSIA. UKRINE
	23	AJG92-154	MICRO SWITCH ASS'Y	1	
	24	AJB98-1512K0	BOTTOM PLATE UNIT	1	
	25	XUE6FP	RETAINING RING (TYPE U)	1	
	26	AJN97-151-S2	ROTARY KNOB ASS'Y	1	
△	27	AJP99M151-K0	POWER CORD UNIT (C2)	1	MALAYSIA, VIETNAM, SINGAPORE, UAE, OMAN, QATAR, KAZAKHSTAN, RUSIA, UKRINE
△	27	AJP99R151-K0	POWER CORD	1	AUSTRALIA, NEW ZEALAND
△	27	AJP99H1511K0	POWER CORD	1	HONG KONG. KUWAIT, SAUDI ARABIA
	28	AJB13-151	CORD CLIP	1	
	29	AX56A98100	MOTOR SCREW	4	
	30	AJB06M114	MOTOR SCREW RUBBER	4	
	31	XTN4+16BFJ	PAN HEAD TAPPING SCREW	2	
	32	AJ33A53000	FOOT RUBBER	4	
	33	XTN4+16BFJ	PAN HEAD TAPPING SCREW	1	
	34	XTN4+16BFJ	PAN HEAD TAPPING SCREW	2	
	35	AJJ01M114	ADJUSTMENT WSHER A	1	
	36	AJG28-154	STOPPER PLATE SPRING	1	
	37	AJG27-154	METAL STOPPER PLATE	1	
	38	XTN4+16BFJ	PAN HEAD TAPPING SCREW	1	

Safety	Ref. No.	Part No.	Part Name & Description	Qty	Remarks
	39	AX61BL5000	MILL CUP (GLASS)	1	
	40	AVE44-180-X0	INNER LID	1	
	41	AVE02-1802K0	OUTER LID	1	
	42	AX03BR6300	CUP (GLASS)	1	
	43	AX05B83100	GASKET (UPPER)	1	
	44	AX95BG5200	CUTTING BLADE UNIT	1	
	45	AMX13B45100	WAVING WASHER	1	
	46	AMX27B69200L	SHAFT WASHER B	1	
	47	AVE87-2195K0	MOUTING RING SUB ASS'Y	1	
	48	AVE18-1802	SLIDE PIECE SPRING	3	
	49	AVE17-2191X1	SLIDE PIECE	1	
	50	AX27BA1000L	SHAFT WASHER	1	
	51	AX94BH1200	CONNECTOR UPPER UNIT	1	
	52	AVE86-2195K0	ASS'Y MOUTING RING	1	
	53	AVE88-2195K0	ASS'Y MILL MOUTING RING	1	
	54	AX95BQ9400	MILL CUTTER BLADE UNIT	1	
	55	AMX27B69200L	SHAFT WASHER B	1	
	56	AVE89-2195K0	MILL MOUTING RING SUB ASS'Y	1	
	57	AVE18-1802	SLIDE PIECE SPRING	3	
	58	AVE17-2191X1	SLIDE PIECE	1	
	59	AX0227-060	SHAFT WASHER	1	
	60	AX94BH1100	CONNECTOR UPPER UNIT	1	
	61	AJB00-154-K0	MOTOR HOUSING	1	
	62	AVA10-1802K0	OUTER LID ASS'Y	1	
			PACKING SPECIFICATIONS		
		AJZ01Z154	CARTON BOX	1	MALAYSIA, VIETNAM, SINGAPORE, AUSTRALIA, NEW ZEALAND, UAE, OMAN, QATAR, KUWAIT, SAUDI ARABIA
		AJZ01H154	CARTON BOX	1	HONG KONG
		AJZ01K154	CARTON BOX	1	KAZAKHSTAN. RUSIA, UKRINE
		AJZ02M154	TOP CUSHION	1	
		AJZ03M154	BOTTOM CUSTION	1	
△		AJZ50H154	OPERATING INSTRUCTION	1	MALAYSIA, VIETNAM, HONG KONG, SINGAPORE
△		AJZ50Y154	OPERATING INSTRUCTION	1	UAE,OMAN, QATAR, KUWAIT, SAUDI ARABIA
△		AJZ50R154	OPERATING INSTRUCTION	1	AUSTRALIA, NEW ZEALAND
△		AJZ50K154	OPERATING INSTRUCTION	1	KAZAKHSTAN, RUSIA, UKRINE
		AJZ05-151	SPINNER PAD	1	

MMH1305