

Model No. MK-F500WSD-HK

MK-F500WXE-NL

Panasonic®

© 2016 Panasonic Manufacturing Malaysia Berhad (6100-K). Unauthorized copying and distribution is a violation of law.

WARNING

This service information is designed for experienced repair technicians only and is not designed for use by the general public. It does not contain warnings or cautions to advise non-technical individuals of potential dangers in attempting to service a product. Products powered by electricity should be serviced or repaired only by experienced professional technicians. Any attempt to service or repair the product or products dealt with in this service information by anyone else could result in serious injury or death.

IMPORTANT SAFETY NOTICE


There are special components used in this equipment which are important for safety. These parts are marked by  in the Schematic Diagrams, Circuit Board Diagrams, Exploded Views and Replacement Parts List. It is essential that these critical parts should be replaced with manufacturer's specified parts to prevent shock, fire or other hazards. Do not modify the original design without permission of manufacturer.

TABLE OF CONTENTS

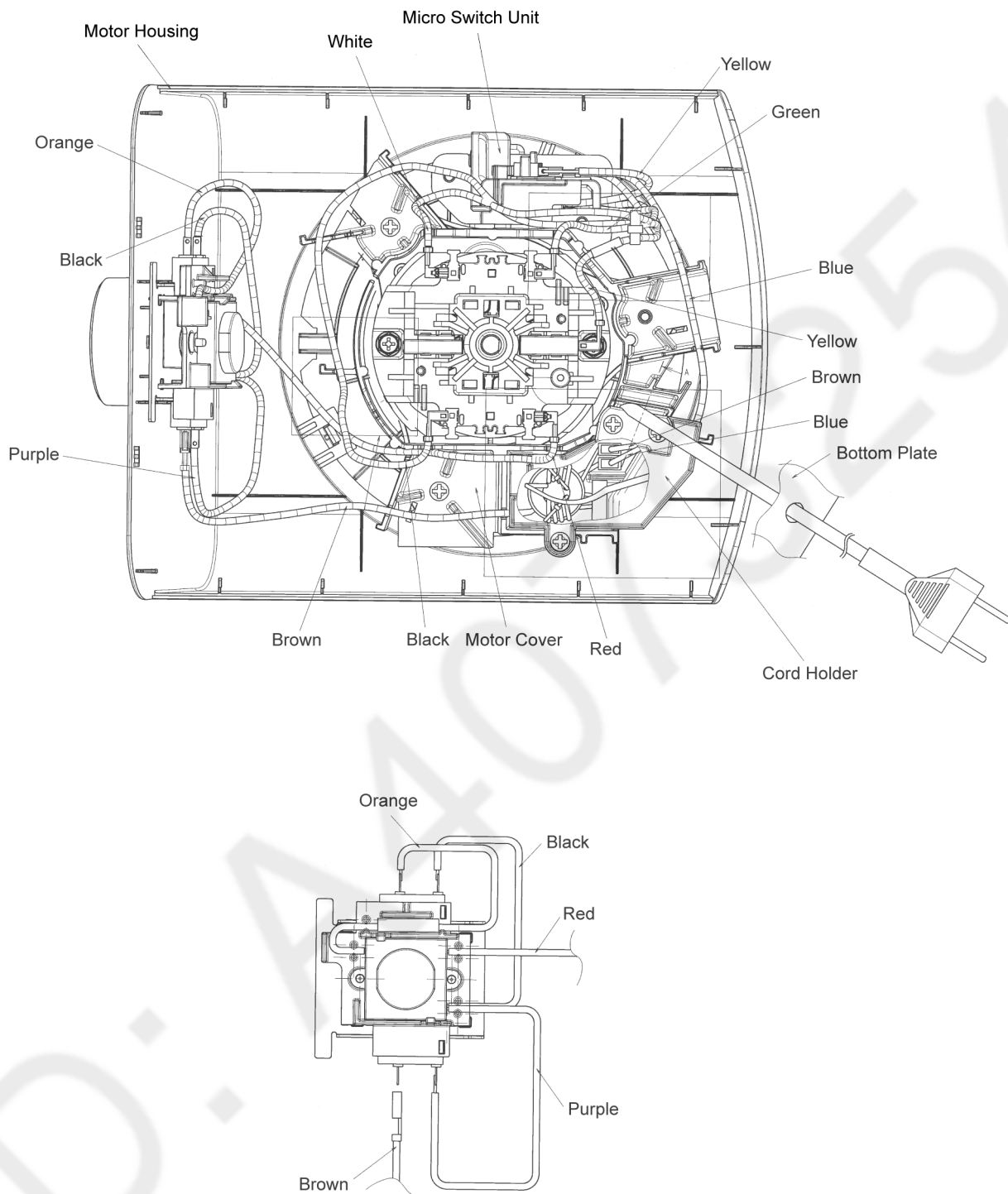
	PAGE	PAGE
1 Specifications -----	3	
2 Wiring Connection Diagram -----	4	
2.1. Actual Wiring Diagram-----	4	
2.2. Wiring Connection Diagram (EMC Model)-----	5	
2.3. Wiring Connection Diagram (Non-EMC Model)-----	6	
3 Schematic Diagram -----	7	
3.1. EMC Model-----	7	
3.2. Non-EMC Model-----	7	
4 Troubleshooting Guide -----	8	
5 Disassembly and Assembly Instructions -----	9	
5.1. Disassembly of Bottom Assembly-----	9	
5.2. Disassembly of Switch-----	10	
5.3. Disassembly of Speed Controller-----	10	
5.4. Disassembly of Motor Unit-----	11	
6 Exploded View and Replacement Parts List -----	13	
6.1. Location of Parts-----	13	
6.2. Packing Instruction-----	15	
6.3. Replacement Part List-----	16	
6.3.1. Part List-----	16	
6.3.2. Packing List-----	17	

1 Specifications

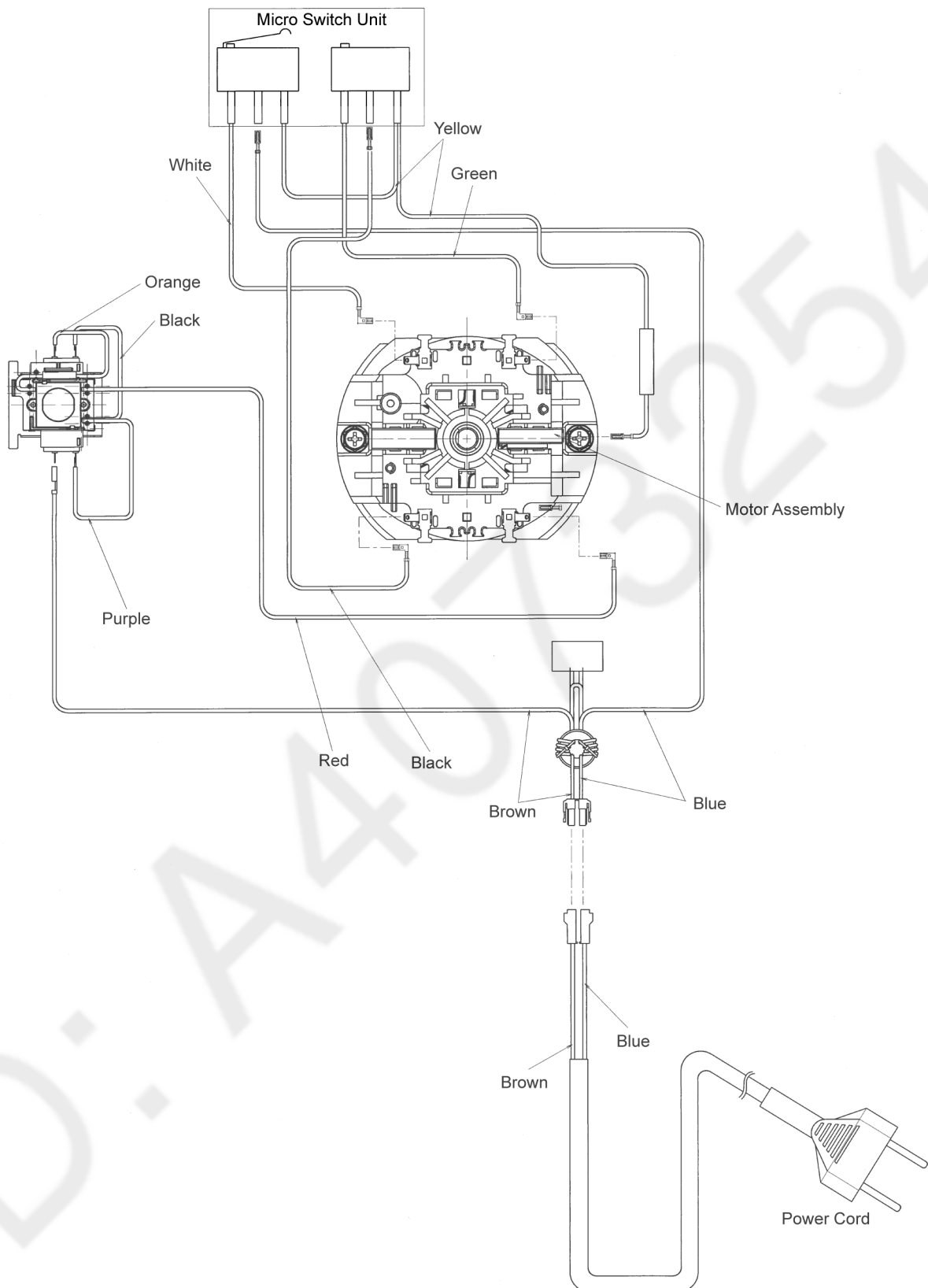
Product No.	MK-F500	
Function	Food Processor	Blender & Dry Mill
Rated Voltage	220 V - 240 V	
Rated Frequency	50 Hz - 60 Hz	
Rated Power Consumption	180 W - 200 W	
Rated Time	2 minutes ON, 4 minutes OFF	Blender : 2 minutes ON, 2 minutes OFF Dry Mill : 1 minute ON, 2 minutes OFF
Switch	Rotary Switch	
Product Size (H x W x D)	H437 x W263 x D259 mm	Blender : H395 x W208 x D259 mm Dry Mill : H299 x W202 x D259 mm
Product Weight	Approx. 3.1 kg	Blender : Approx. 2.8 kg Dry Mill : Approx. 2.6 kg
Capacity	Container Capacity : 2.5 L Maximum working capacity : Solids = 400 g Liquids = 1.5 L	Blender : 1 L Dry Mill : 50 g (Coffee Beans)
Attachment & Accessories	Knife Blade, Blade Stand, Slicing Blades (Thick & Thin), Shredding Blades (Coarse & Fine), French Fry Blade, Kneading Blade, Whipping Blade, Grating Blade, Citrus Press, Salad Drainer, Storage Case Unit	Blender Unit, Dry Mill Unit
Common Accessories	Brush with Spatula	
Dishwasher Safe Items	Bowl and Bowl Cover	

2 Wiring Connection Diagram

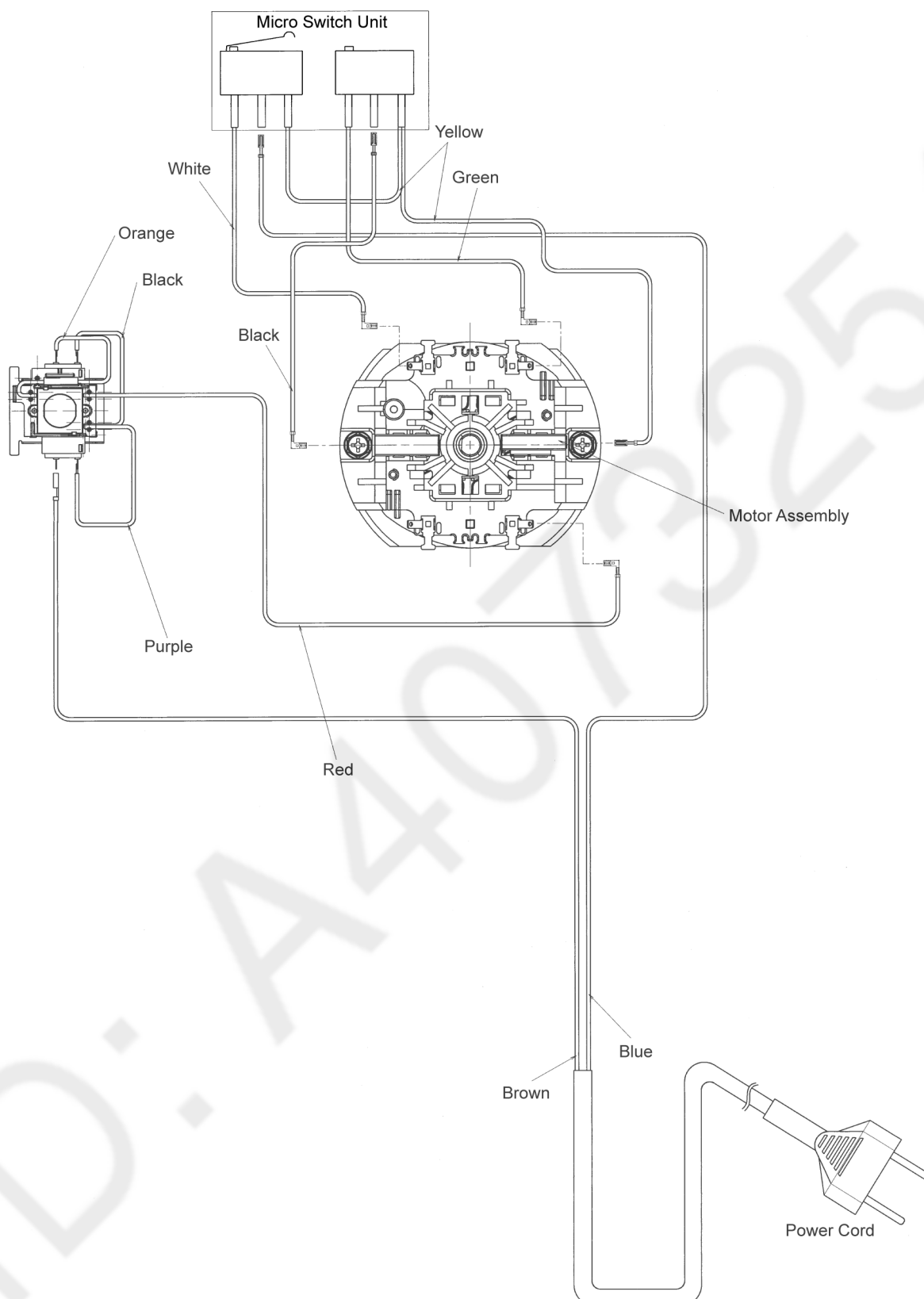
2.1. Actual Wiring Diagram



2.2. Wiring Connection Diagram (EMC Model)

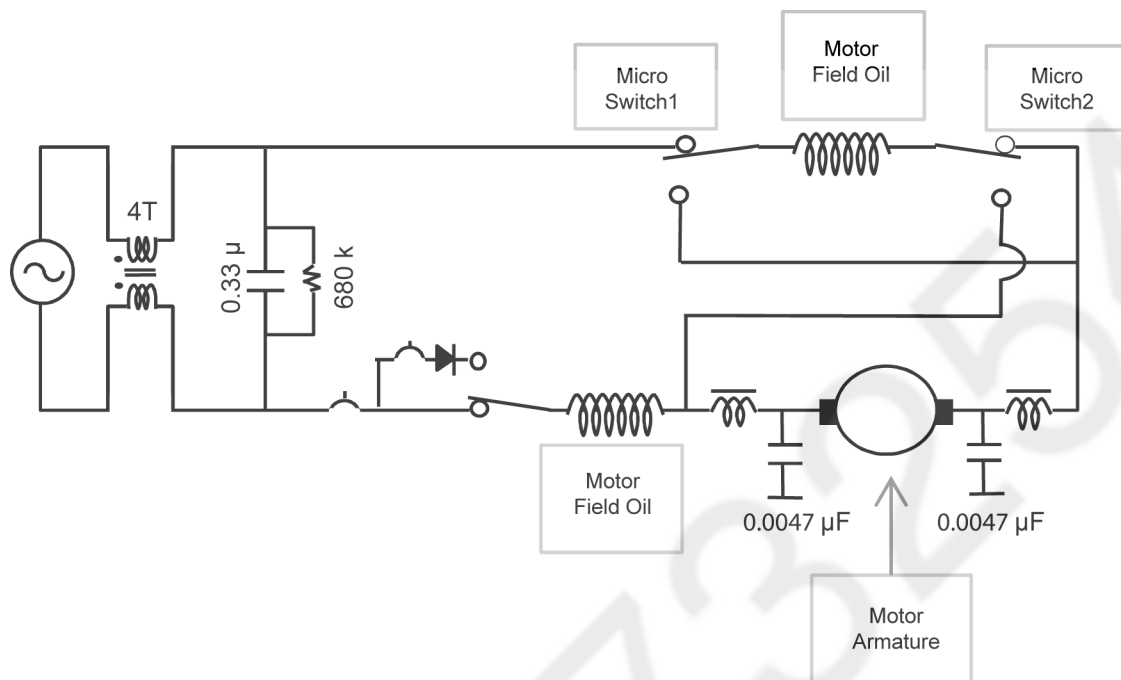


2.3. Wiring Connection Diagram (Non-EMC Model)

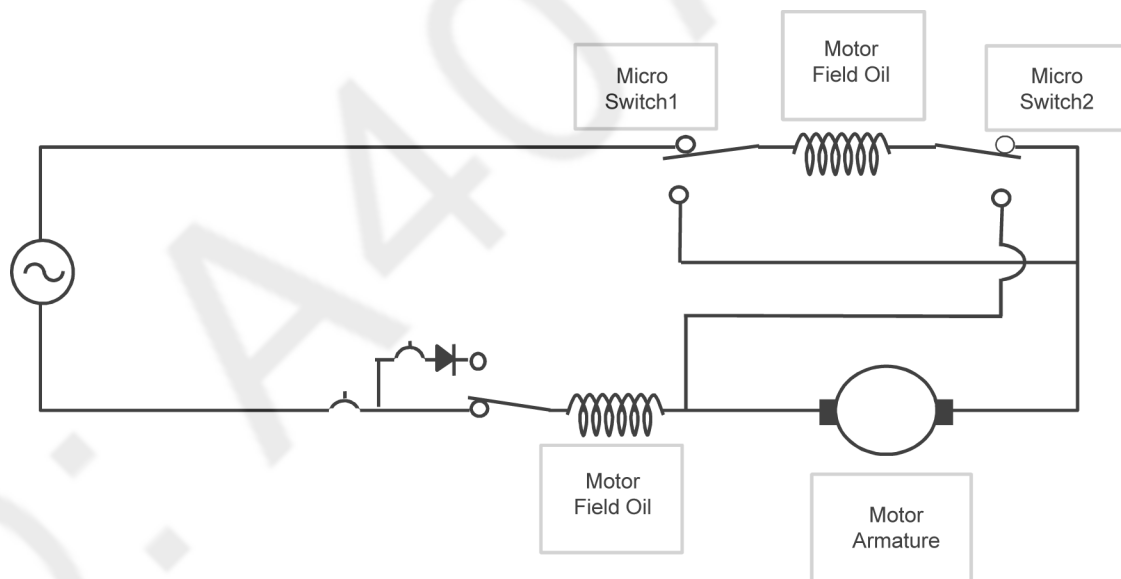


3 Schematic Diagram

3.1. EMC Model



3.2. Non-EMC Model



4 Troubleshooting Guide

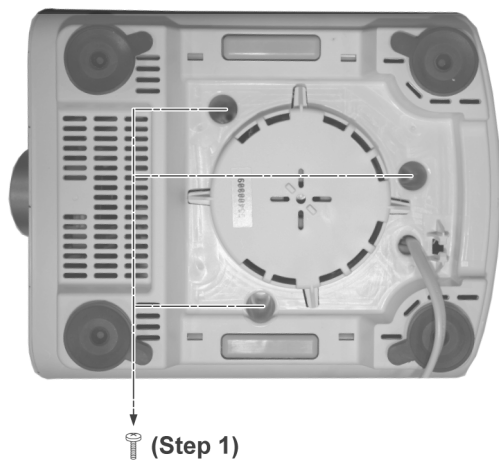
Please check the following points before arranging for service.

Problem		Cause and Action
The appliance does not turn on.	▷	<ul style="list-style-type: none"> ● The plug is loose in the outlet. <ul style="list-style-type: none"> ➔ Plug in firmly into the outlet.
The appliance does not operate even when the Rotary Switch is activated.	▷	<ul style="list-style-type: none"> ● The Bowl is not properly locked onto the Motor Housing. <ul style="list-style-type: none"> ➔ Ensure that the triangle mark on the attachments are aligned with the rectangular mark on the Motor Housing. ● The Bowl Cover is not fully locked onto the Bowl. <ul style="list-style-type: none"> ➔ Fully secure the Bowl Cover onto the Bowl. ● The ingredients are jammed. <ul style="list-style-type: none"> ➔ Remove the ingredients carefully and ensure that the amount used is as stated.
The appliance suddenly stops during operation.	▷	<ul style="list-style-type: none"> ● The circuit breaker protection is activated. <ul style="list-style-type: none"> • Too much ingredients were inserted. <ul style="list-style-type: none"> ➔ Remove the excess ingredients and ensure that the amount used is as stated. • Large chunks or hard ingredients were used. <ul style="list-style-type: none"> ➔ Ensure that the ingredients are cut into the stated sizes. Do not use hard ingredients such as frozen foods or highly dense solids. ● The safety lock was triggered. <ul style="list-style-type: none"> • Abnormal vibration during operation may offset the safety lock engagement. <ul style="list-style-type: none"> ➔ Ensure that the ingredients used and the amount are as stated. ➔ Lock the Bowl Cover onto the Bowl firmly, and ensure that the Bowl is locked firmly onto the Motor Housing.
There is abnormal vibration and noise during operation.	▷	<ul style="list-style-type: none"> ● The appliance is not placed on a clean and smooth surface. <ul style="list-style-type: none"> ➔ The Rubber Foot is only effective when placed on a clean, smooth and flat surface. ● The ingredients used for processing is either too much or too hard. <ul style="list-style-type: none"> ➔ Ensure that the ingredients used are as stated, reduce the ingredients if it is over the stated amount.
The texture and consistency of the processed ingredients did not turn out well.	▷	<ul style="list-style-type: none"> ● The maximum ingredient amount and processing duration are meant to serve as a guideline, lesser ingredient amount and different ingredients will affect the performance. <ul style="list-style-type: none"> ➔ Process the ingredients with a suitable duration till the desired texture and consistency.

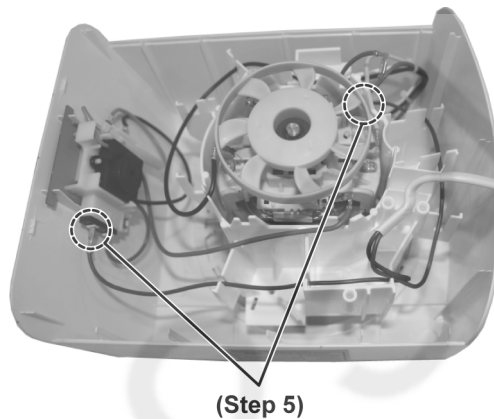
5 Disassembly and Assembly Instructions

5.1. Disassembly of Bottom Assembly

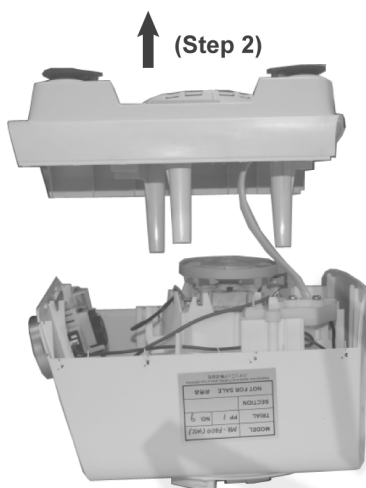
Step 1 Remove 3 Screws.



Step 5 Detach the Wire Connector (Blue and Brown) and remove the Bottom Assembly.

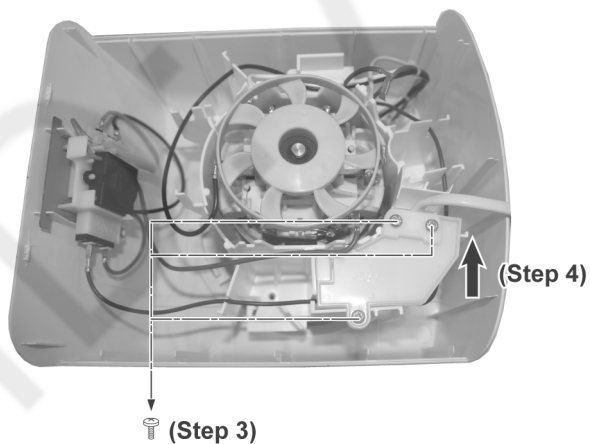


Step 2 Pull up the Bottom Assembly.



Step 3 Remove 3 Screws.

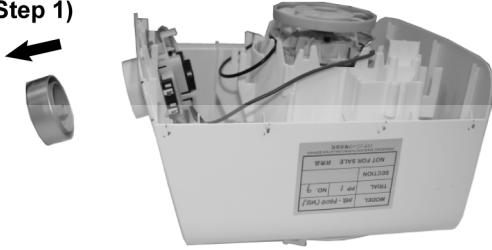
Step 4 Take out the Dressing Box Cover.



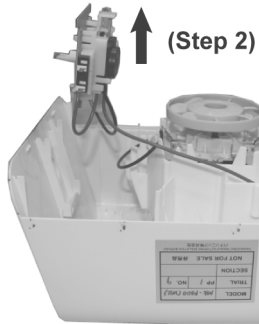
5.2. Disassembly of Switch

Step 1 Pull out the Knob.

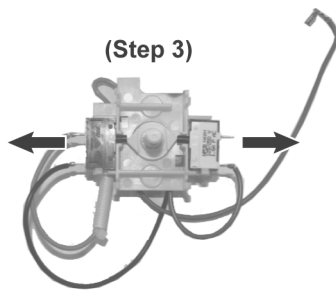
(Step 1)



Step 2 Pull out the Rotary Switch.

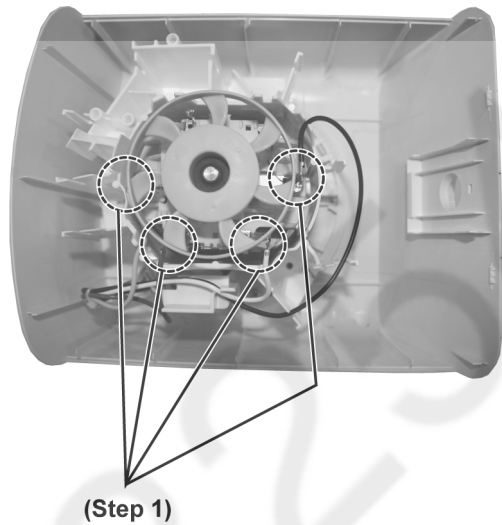


Step 3 Pull out the Left and Right Circuit Breaker.

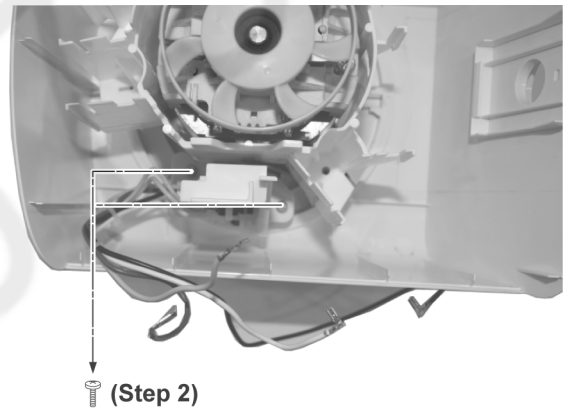


5.3. Disassembly of Speed Controller

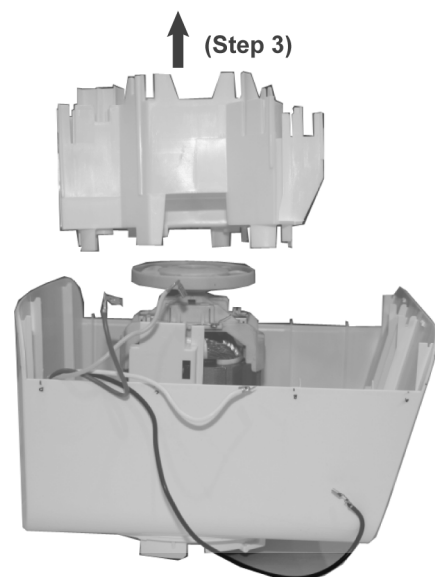
Step 1 Detach the 4 Wire Connector (Yellow, Green, White & Black) and pull out the Speed Controller.



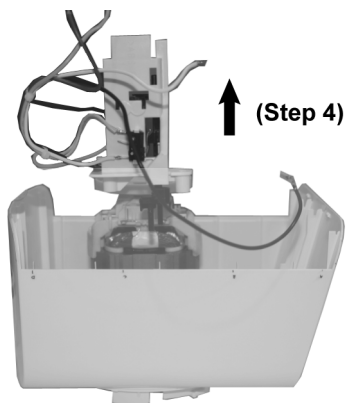
Step 2 Remove 2 screws.



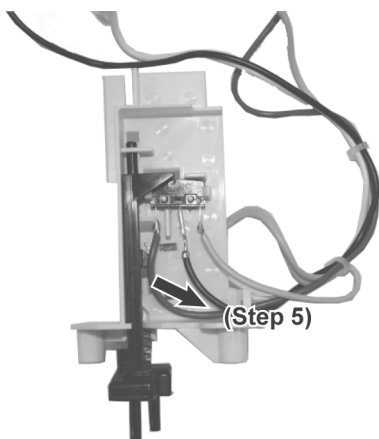
Step 3 Pull up the Motor Protector.



Step 4 Pull up the Speed Controller.

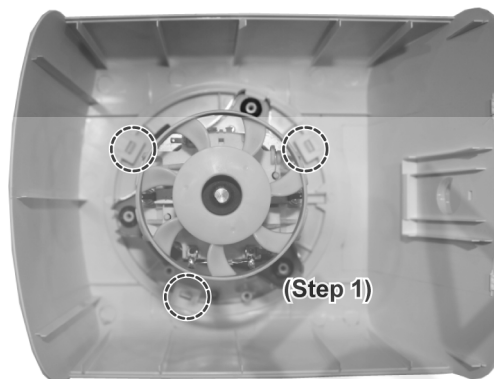


Step 5 Pull out the Spring from Speed Controller.



5.4. Disassembly of Motor Unit

Step 2 Release 3 Catches and pull out the Motor.



Step 2 Hold the bottom side and turn the Top Side to clockwise and release the Motor Unit.

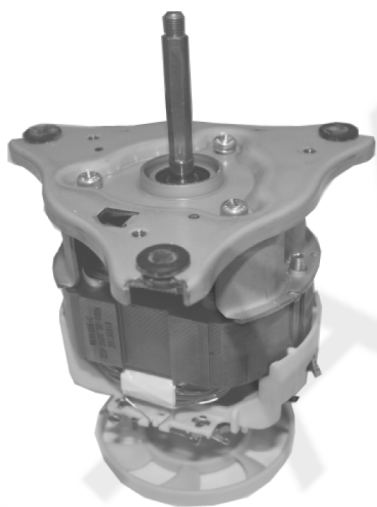
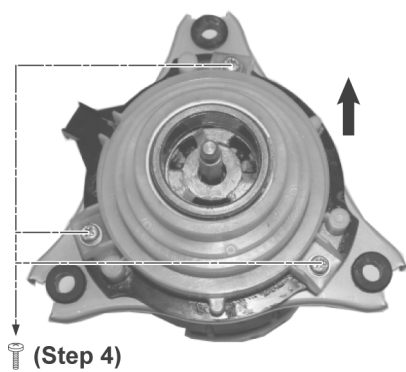


Step 3 Remove others part from Motor Unit.



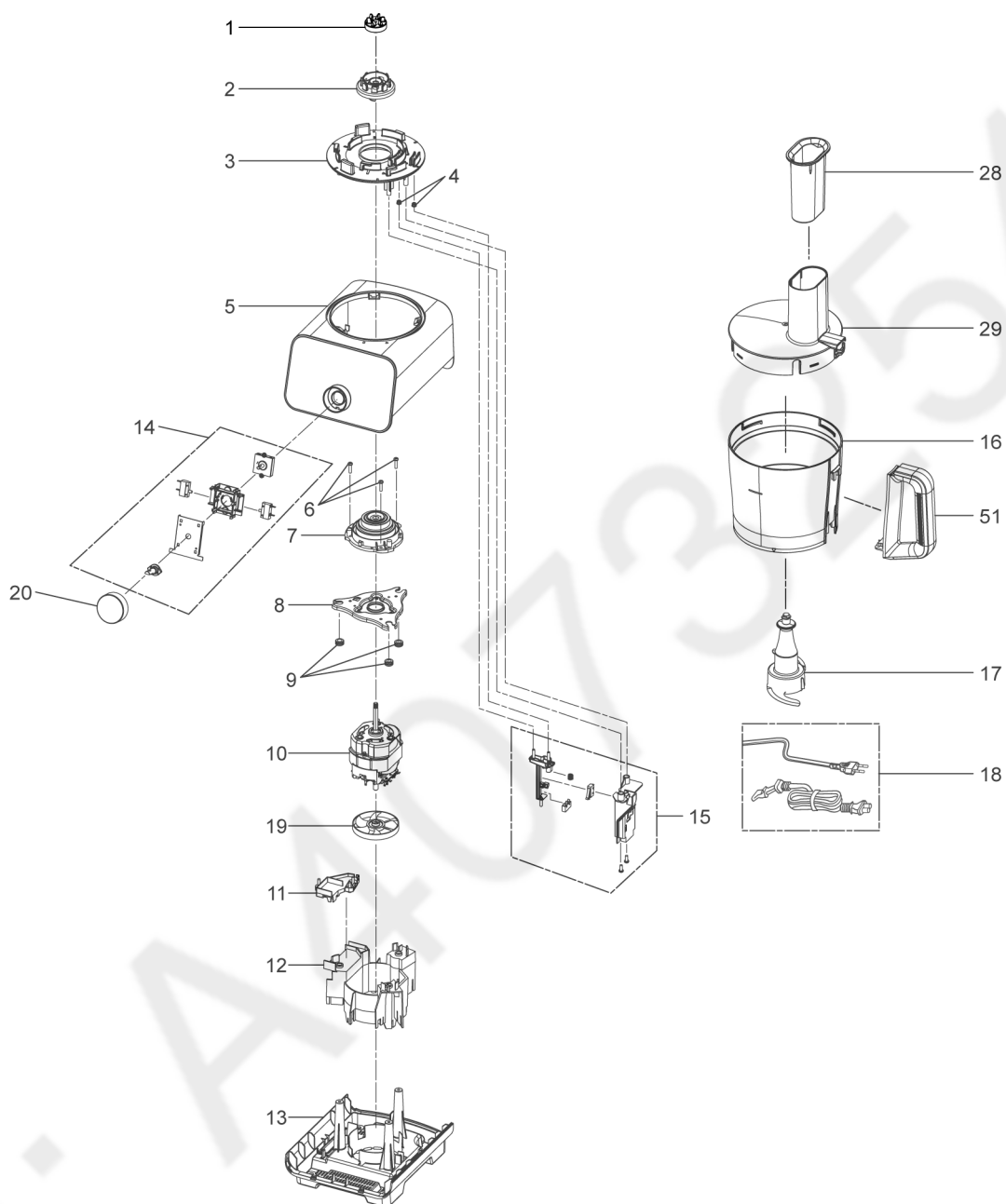


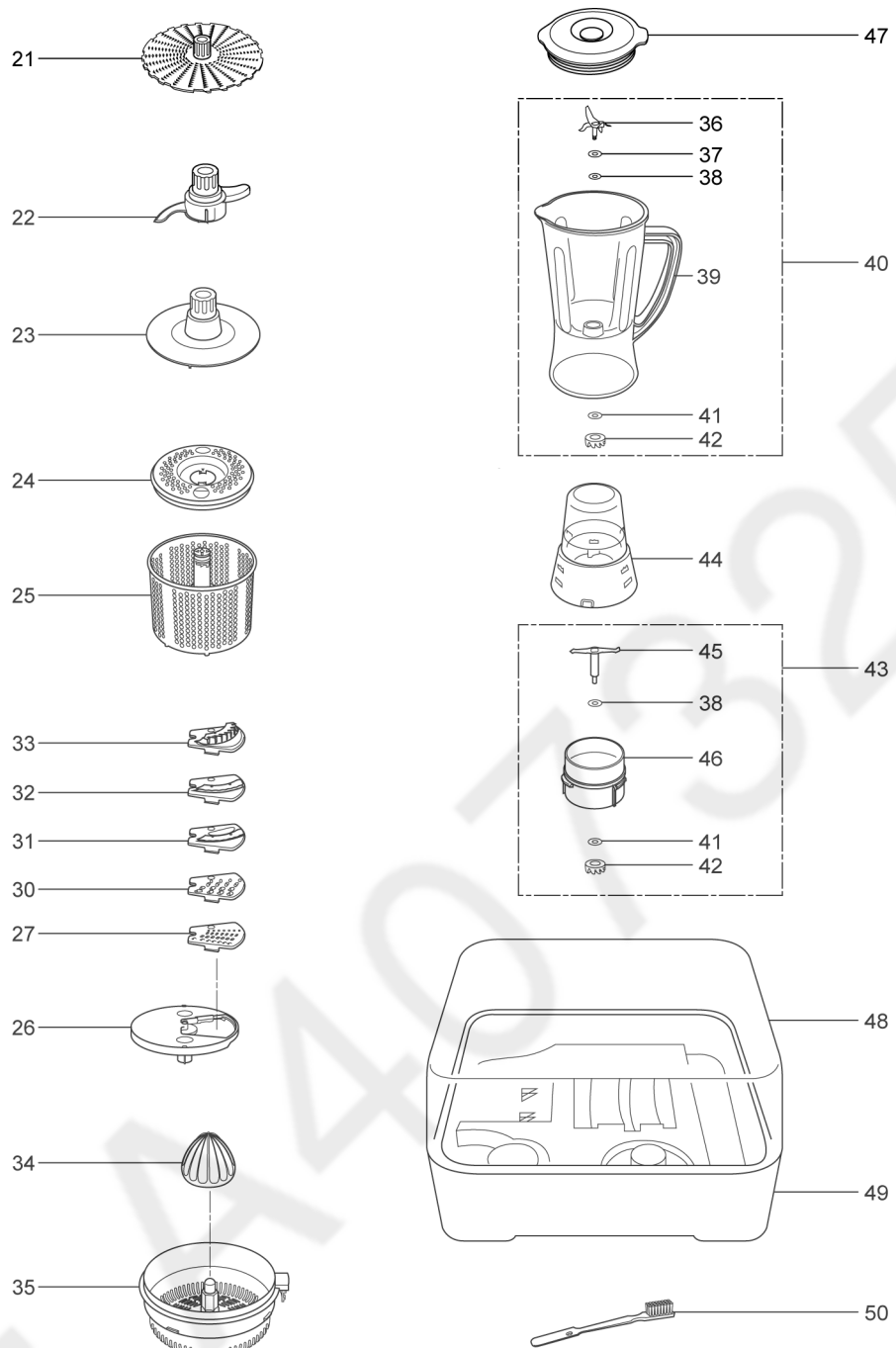
Step 4 Remove 3 Screws and pull up the part.



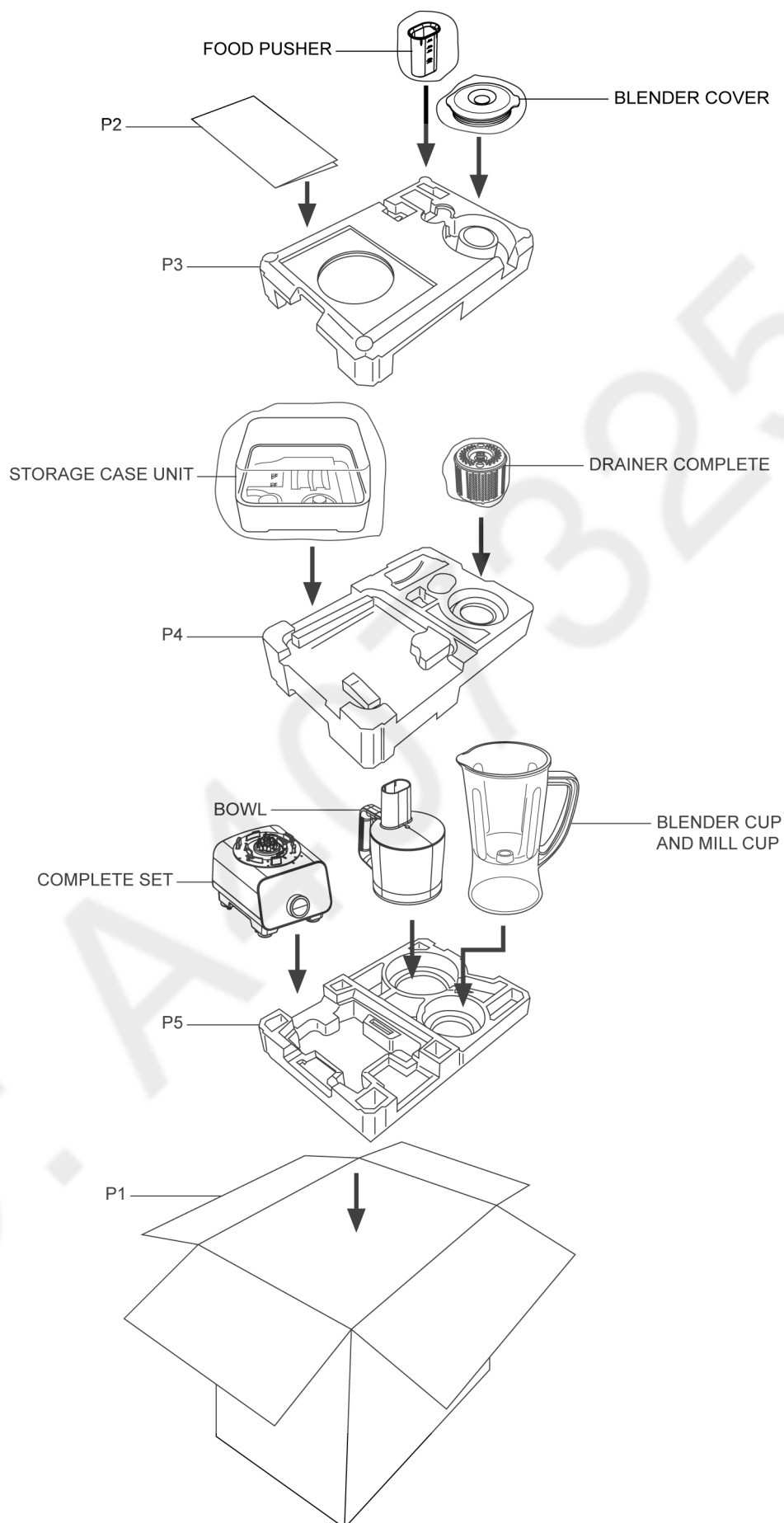
6 Exploded View and Replacement Parts List

6.1. Location of Parts





6.2. Packing Instruction



6.3. Replacement Part List

Important safety notice:

Components identified by △ mark have special characteristics important for safety.

When replacing any of these components, use only manufacturer's specified parts.

6.3.1. Part List

Safety	Ref. No.	Part No.	Part Name & Description	Qty	Remarks
	1	AUG91-153-K0	CONNECTOR B UNIT		
	2	AUG90-153-K0	CONNECTOR UNIT		
	3	AUB03-153-W4	MOTOR HOUSING COVER		
	4	AVB18M216-H3	SEAL CAP		
	5	AUB00-155-W4	MOTOR HOUSING		
	6	XYN4+J14FJ	WASHERED PAN HEAD MACHINE SCREW		
	7	AUG92-153	GEAR UNIT		
	8	AUG00-153	CHASSIS		
	9	AU37B30000	RUBBER CUSHION		
△	10	AWKH8825-C	MOTOR ASS'Y		CHINA
△	10	AWKH8825-D	MOTOR ASS'Y		
	11	AUB11-153	CORD HOLDER		
	12	AUM02-153	MOTOR COVER		
	13	AUC99-155-W4	BOTTOM PLATE UNIT		
△	14	AUA05-155	SWITCH ASS'Y		
△	15	AU05J155	MICRO SWITCH ASS'Y		
△	15	AU05Y155	MICRO SWITCH ASS'Y		CHINA
	16	AUD91-153-X0	BOWL UNIT		
△	17	AUF87-153-H3	KNIFE BLADE UNIT		
△	18	AUP86Y155-W4	CORD UNIT		C2
△	18	AUP86W155-W4	CORD UNIT		B3
△	18	AUP86J155-W4	CORD UNIT		S3
△	18	AUP86G155-W4	CORD UNIT		C2
	19	AUM03-153	MOTOR FAN		
	20	AUN88-155-H3	SWITCH KNOB UNIT		
△	21	AUF81-153-K0	OROSHI CUTTER UNIT		
	22	AUF84-153-K0	KNEADER BLADE UNIT		
	23	AUF78-153-K0	WHIPPING BLADE UNIT		
	24	AUF46-153-K0	DRAINER BASKET COVER		
	25	AUF45-153-K0	DRAINER BASKET		
	26	AUF82-153-H3	BLADE STAND UNIT		
	27	AUF95-153	FINE SHREDDING BLADE UNIT		
	28	AUD94-153-X0	FOOD PUSHER UNIT		
	29	AUD99-153-X0	BOWL COVER UNIT		
△	30	AUF79-153	COARSE SHREDDING BLADE UNIT		
△	31	AUF90-153	FINE SLICING BLADE UNIT		
	32	AUF80-153	COARSE SLICING BLADE UNIT		
△	33	AUF99-153	FRENCH FRY BLADE UNIT		
	34	AUF76-153-K0	CONE UNIT		
	35	AUD10-153-K0	STRAINER		
△	36	AX95BG5200	CUTTER BLADE UNIT		
	37	AMX13B45100	WAVING WASHER		
	38	AX27BA100L	SHAFT WASHER		
	39	AVE70M1984X0-B	CUP SUB ASS'Y		
	40	AVE701M2271X0-B1-P	CUP SUB ASS'Y 2		
	41	AMX27B69200L	SHAFT WASHER B		
	42	AVF95M1981	CONNECTOR UPPER UNIT		
	43	AVE69M187	SHAFT MOUNTING COMPLETE		
	44	AVE13M1873X0	MILL CONTAINER		
△	45	AVF97M198	CUTTING BLADE UNIT		
	46	AVE89M1873	SHAFT MOUNTING ASS'Y		
	47	AVE94-153-W2	COVER UNIT		
	48	AUF11-153-K0	STORAGE CASE		
	49	AUF12-153-K0	STORAGE CASE LID		
	50	AJ37B30300K0	BRUSH		
	51	AUD92-153-H3	HANDLE UNIT		

6.3.2. Packing List

Safety	Ref. No.	Part No.	Part Name & Description	Qty	Remarks
	P1	AUZ01E155	CARTON BOX		
	P1	AUZ01K155	CARTON BOX		RUSSIA
	P1	AUZ01J155	CARTON BOX		PGF, SUDAN, PAKISTAN, AFGHANISTAN, NIGERIA, UAE, SAUDI ARABIA, KUWAIT, OMAN, QATAR, IRAN, IRAQ, EGYPT, JORDAN, SOUTH AFRICA, HONG KONG
⚠	P2	AUZ50H155	OPERATING INSTRUCTION		HONG KONG
⚠	P2	AUZ50K155	OPERATING INSTRUCTION		RUSSIA
⚠	P2	AUZ50J155	OPERATING INSTRUCTION		PGF, SUDAN, PAKISTAN, AFGHANISTAN, NIGERIA, UAE, SAUDI ARABIA, KUWAIT, OMAN, QATAR, IRAN, IRAQ, EGYPT, JORDAN, SOUTH AFRICA
⚠	P2	AUZ50G155	OPERATING INSTRUCTION		
	P3	AUZ02-153	TOP CUSHION		
	P4	AUZ13-153	CENTRE CUSHION		
	P5	AUZ03-153	BOTTOM CUSHION		