

## Specification

Power supply	Local supply rating	Blender Container	Maximum 1,250ml (Glass)
Operation rating	Continuous (Repetition 3 min. ON, 1 min. OFF)	Dimensions (H×W×D)	38.0×19.6×21.0 cm
Rating Speed	11,100~13,900r.p.m	Weight	3.6kg
		Accessories	Mill attachment

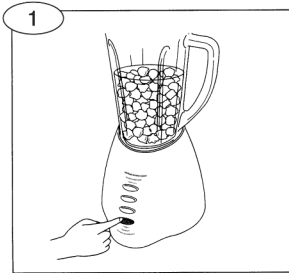
\*Specifications are subject to change without notice.

# GENERAL

## BREAKER

A breaker is provided at the switch, for protection of the motor against rare short-circuiting. Therefore, when the motor is overloaded (i.e. when the breaker is subjected to the current larger than specified), the breaker will operate to open the circuit, causing the motor to stop. The breaker can be reset by depressing the 'OFF' button of switch. When the motor is stopped, take the following actions.

1. Switch to 'OFF'. Disconnect the power plug. Then, the OFF switch will reset the breaker.



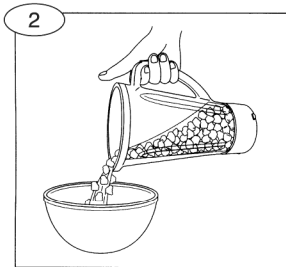
## BREAKER PERFORMANCE

Take the reading of current at which the breaker operates under the constant-current power source (D.C) at 20°C.

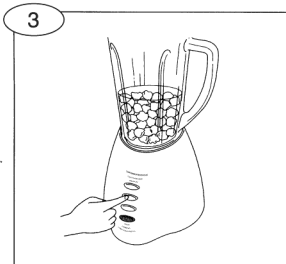
### Breaker for 240V Rating

- . not to operate within 1 minute under
- . to operate within 1 minute under

2. Reduce the ingredients to less than a half in volume.



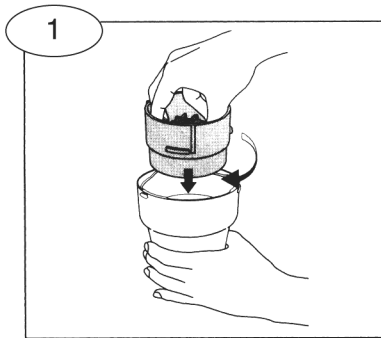
3. Resume operation.



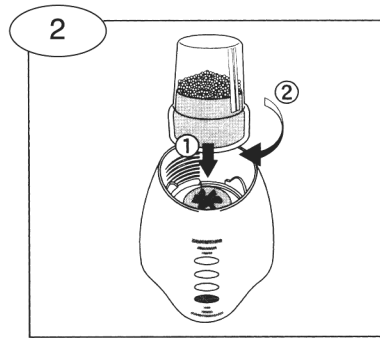
## CAUTIONS

- Maximum ingredient volume: 1,250 ml.
- Do not crush ice cubes only.
- Do not operate blender longer than 3 min. at one time. Rest for 1 min., than resume.
- Dice solid foods first. Blend with water.
- Before using, make sure voltage and frequency indicated on the bottom plate are the same as your local supply.
- When blending meat, fish, garlic or beans, do not fill the blender container over 1/3 full or operate more than 2 min.
- Do not immerse motor housing in water.
- Never remove or attach container when motor is operating.

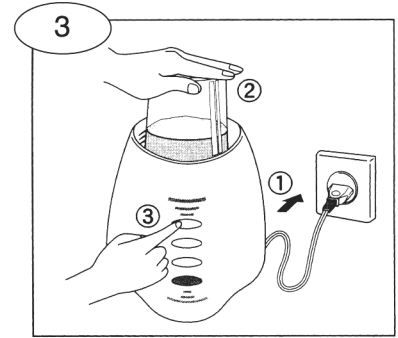
# How To Use Dry Mill



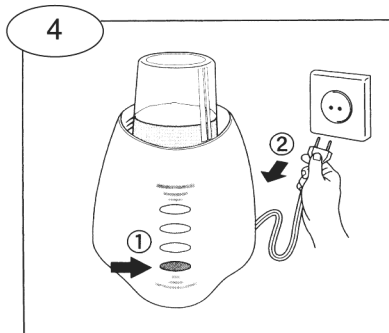
Turn mill upside down, and place ingredients in. Twist blade base onto mill container and lock.



Place container and blade base on motor housing. Twist container clockwise to lock.

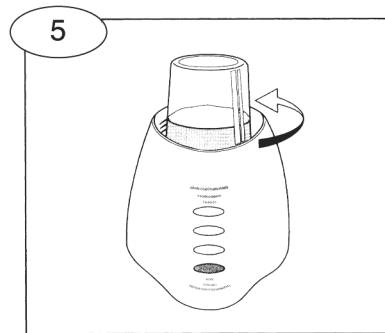


Plug in. Support container than select one of the speed buttons as required. Use PULSE button for precision blending.



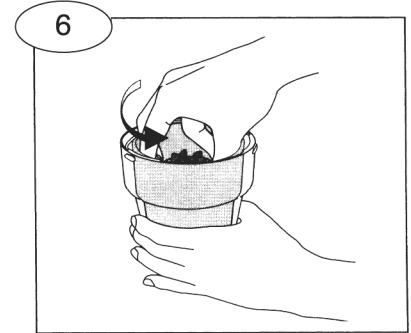
Swich off. Unplug.

Support container untill operation finishes completely.



Twist container counterclockwise to remove.

Be sure to grip plug when unplugging. Never pull on the cord.



Turn container upside down and tap with hand to release ingredients stuck in blades. Twist blade base counterclockwise to remove. Remove ingredients.

## CAUTION :

- Do not place any ingredients more than maximum amount of 50 g .
- Do not operate With empty container.
- Do not operate more than 90 seconds at one time.

# TROUBLE SHOOTING GUIDE

Symptom	Possible Cause	Countermeasure
·Motor fails to Armature Ass'y Or humming noise is heard	1.Motor(Armature Ass'y,Field Ass'y) defective. 2.Wiring connection improper 3.Switch defective 4.Cord U broken 5.The current breaking function of switch is on 6.Motor short-circuited 7.Wear of Brush Ass'y	1.Replace Motor(Armature Ass'y,Field Ass'y) 2.Correct it 3.Replace Switch 4.Replace Cord U 5.Push "OFF" and then "ON" of Switch 6.Replace Motor(Armature Ass'y, Field Ass'y) 7.Replace the two Brush Ass'y at the same time
·Cutter Ass'y fails to rotate	1.Cutter Ass'y shaft seizes up 2.Wear of Connector	1.Replace Cutter Ass'y and Cup Base Ass'y 2.Replace Connector(Upper or lower)
·Noises and vibrations are observed	1.Fastened conditions of screws improper 2.Cutter Ass'y deformed 3.Motor Shaft eccentric 4.Assembly of Juice Cup improper or fastened conditions of Cup Base Ass'y to Juice cup improper.	1.Fasten tightly 2.Replace Cutter Ass'y 3.Replace Armature Ass'y 4.Reassemble properly
·Juice or other material leaks	1.Juice cup cracked 2.Packing improperly fixed 3.Packing damaged 4.Juice cup and Cup Base Ass'y insufficiently fastened	1.Replace Juice cup 2.Properly fix Packing 3.Replace Packing 4.Fasten them firmly
·Current Breaking Function of Switch Ass'y fails and cause motor burning	Breaker of Switch Ass'y short-circuited	Replace both Motor(Armature Ass'y and Field Ass'y) and Switch Ass'y

# DISASSEMBLY INSTRUCTIONS

## 1. Juice cup and Cutter Ass'y --Fig.1,2,3

1. Remove the cover A and cover B, then turn the Juice cup up-side-down.
2. Secure the Juice cup and turn the cup base Ass'y counter clockwise. then the packing can be removed.
3. Turn the connector upper clockwise with long nose pliers. Then the Cutter Ass'y and connector upper can be removed.
4. The safety device lever A; safety device lever B safety device lever C ,can be remove when its three screws are loosened.

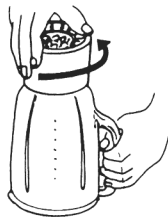


Fig. 1

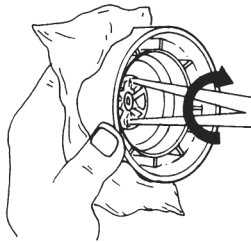


Fig. 2

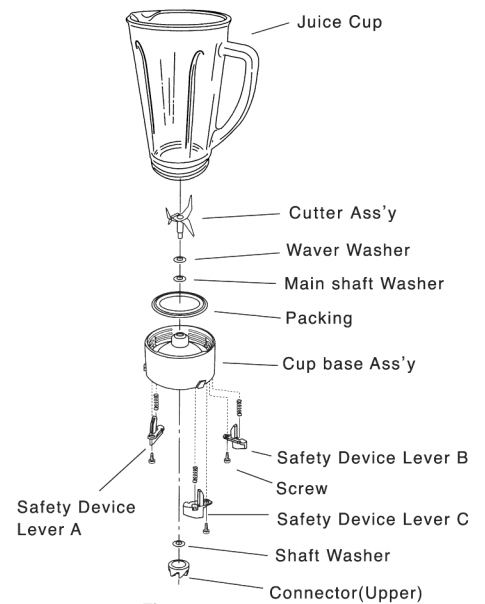


Fig. 3

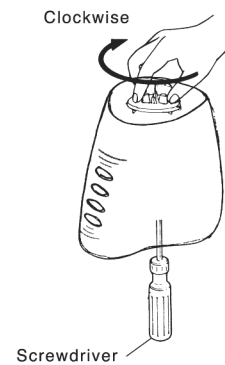


Fig. 4

## 2. Connector(Lower) -Fig.4

1. The bottom plate can be removed when its three screws are loosened.
  2. Hold the part under the motor shaft by means of a screws-driver, then turn the connector (lower) clockwise. The connector (lower) can be removed.
- . The connector (lower) can be relatively easily removed by means of hitting its projecting section clockwise with use of a screwdriver grip in a forceful manner.

## 3. Botton plate, Body U and Cord U - Fig. 5

1. The Body U can be removed downwards from its cover when the Cord U and the breaker switch both held by the Body U are taken out.

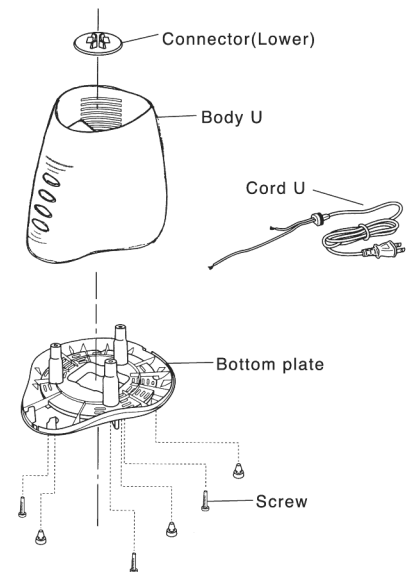
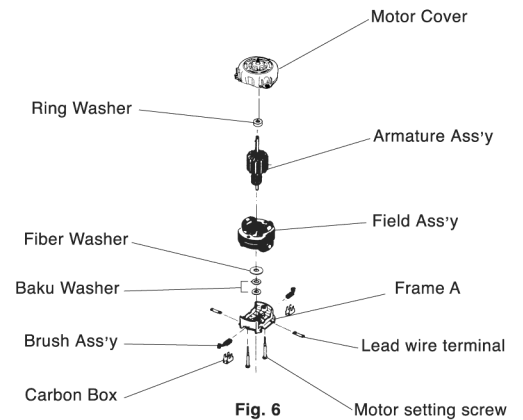


Fig. 5

#### 4. Motor Cover ,Frame A ,Armature Ass'y and Field Ass'y -Fig.6

1. Remove the bottom plate and Body U .( Fig.4)
2. The motor cover, the frame A ,the Armature Ass'y and Field Ass'y can be disassembled when the motor setting screws and the wiring between the lead wire terminal of the frame and the Brush Ass'y guide are all removed.



#### 5. Brush Ass'y

1. Remove the bottom plate.
2. The Brush Ass'y are fixed on Carbon Box. Pull out the Brush Ass'y by retracting claws of the Brush Ass'y terminals , protruding from the sides of the Carbon Box.
3. Be sure to replace the two Brush Ass'y at the same time.

#### 6. Reassembly of Motor Cover,Frame A,Armature Ass'y and Field Ass'y -Fig.7, 8

1. Put the motor cover upside-down and set on it the Ring Washer the Armature Ass'y, the Baku Washer and the Field Ass'y frame in this order.(Note that lead wire terminal should be fixed beforehand.)then, fix them to the motor cover by means of motor setting screws. In this case adjust clearance in the thrust direction and rotability of the Armature Ass'y by adding or reducing the number of Ring washers.
2. Set the Brush Ass'y guide and the Brush Ass'y in the frame. ( Fig.8)
3. Solder the four lead coils of the Field Ass'y to the Brush Ass'y guide and the lead wire terminal,for wiring. ( Fig.8)

#### Note:

When the motor is found out of order, requiring replacement, be sure to renew the Armature Ass'y, the Field Ass'y and the Brush Ass'y at the same time . Furthermore, when the motor cover and/or the frame A are found defective on that occasion, replace them with new ones, as well, without fail.

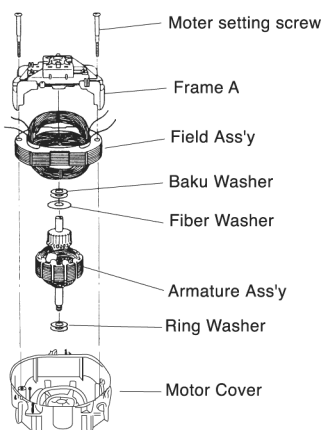


Fig. 7

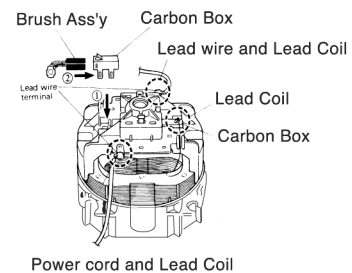
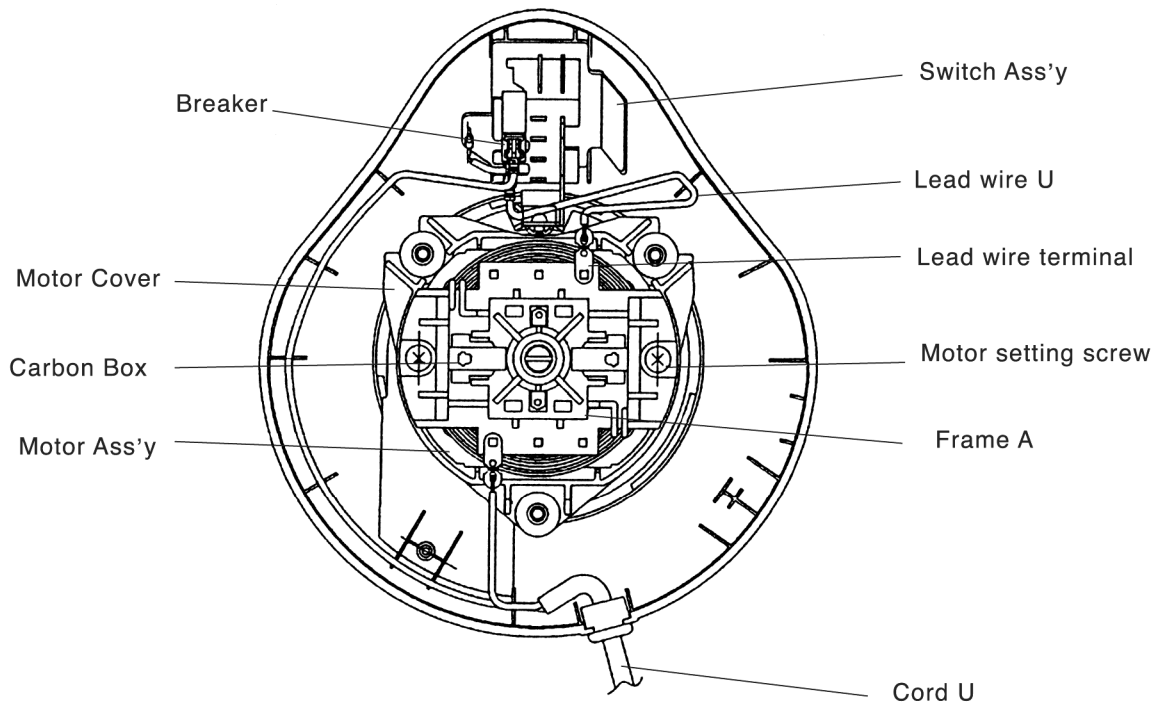


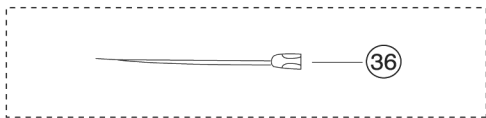
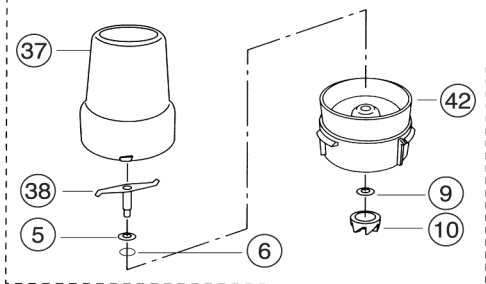
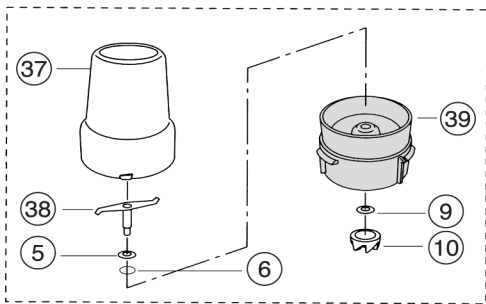
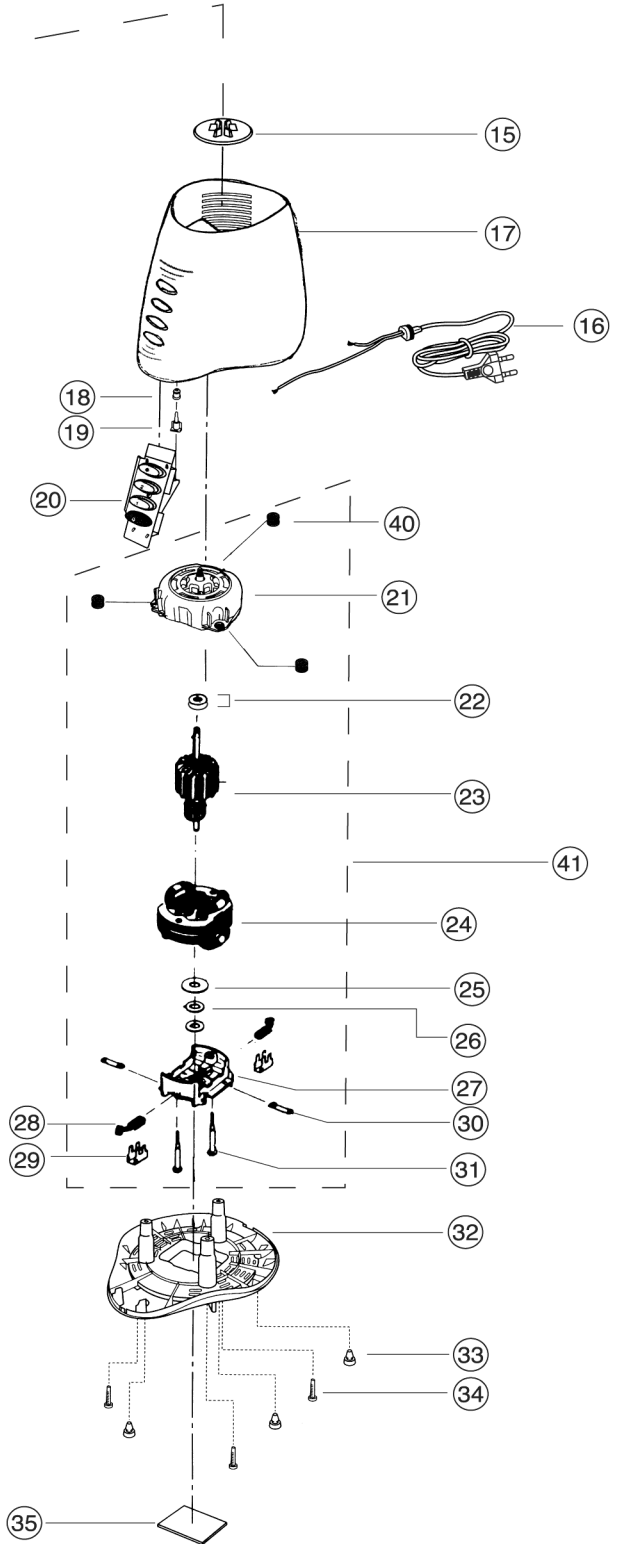
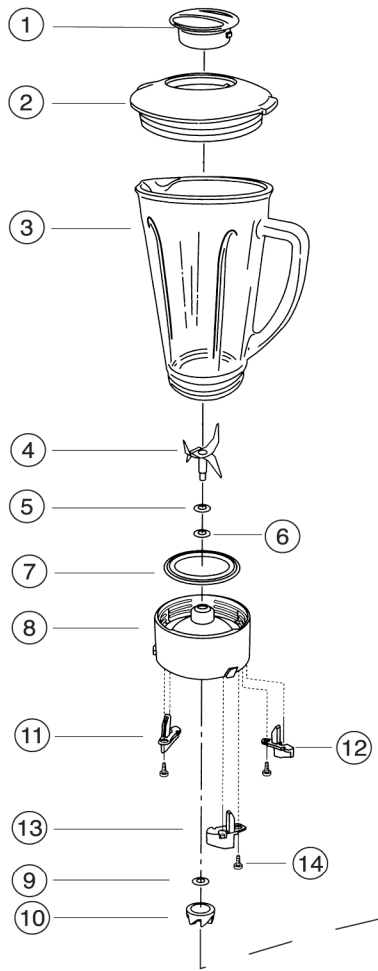
Fig. 8

# SCHEMATIC DIAGRAM

MX-J225GWTN  
MX-J225GWTH  
MX-J225GWTM




# PARTS LOCATION: Model No. MX-J225GWTN





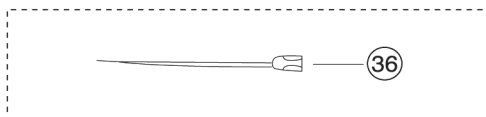
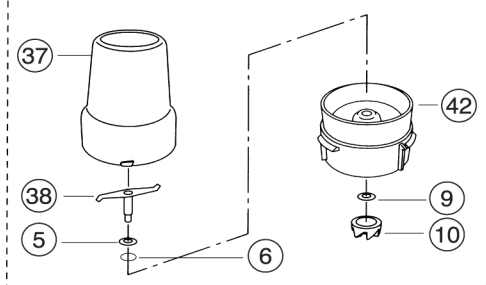
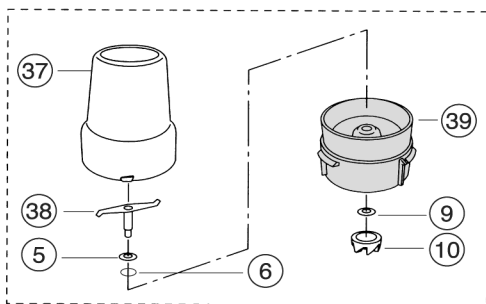
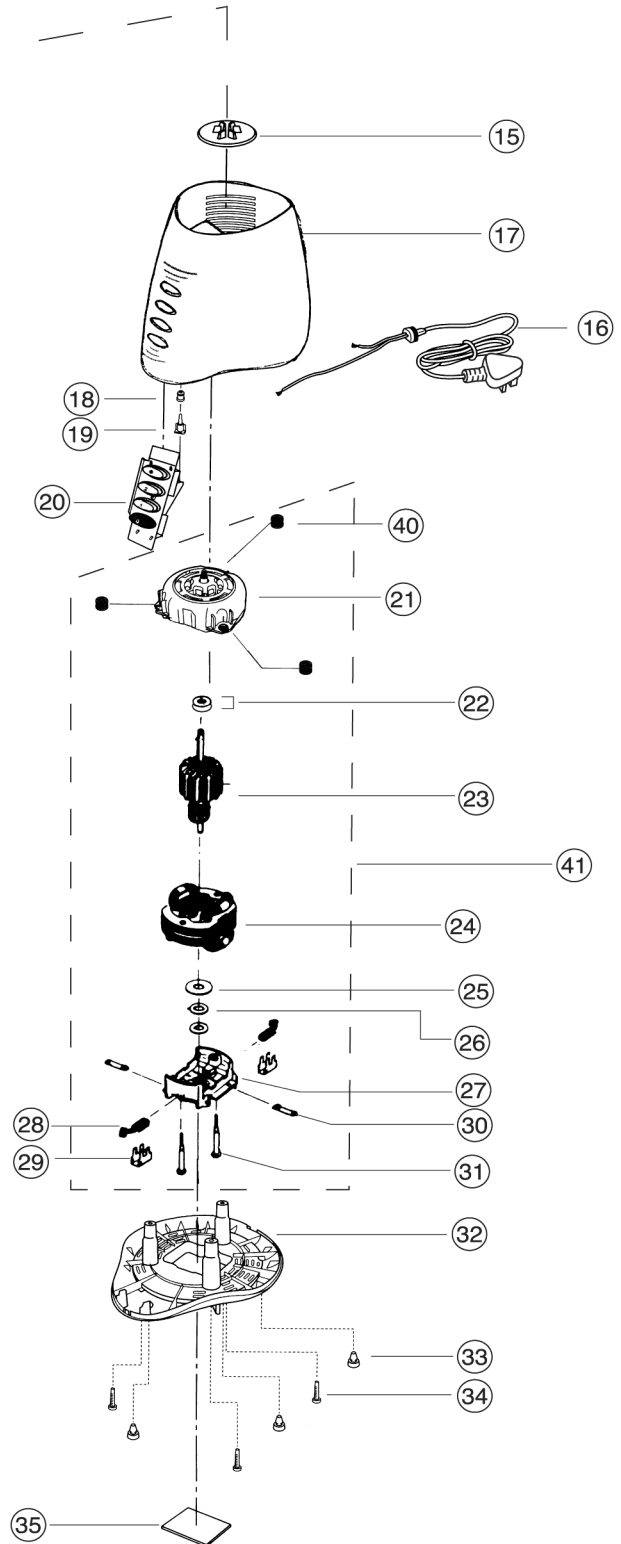
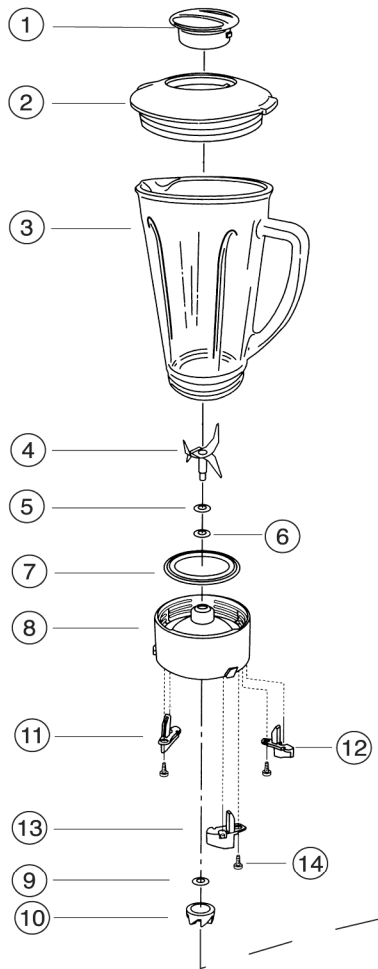
## REPLACEMENT PARTS LIST: Model No. MX-J225GWTN

### Important safety notice

Components identified by  mark have special characteristics for safety  
When replacing any of these components, use only manufacturer's specified parts.


Ref. No.	Part No.	Part Name & Description	Remarks
1	X0202-060	Cover B	
2	X0201-110	Cover A	
3	X0203-250	Juice Cup (G)	
4	X0224-110T	Juice Cutter Ass'y	
5	X0217-010	Waver Washer	
6	X0227-030	Main Shaft Washer	
7	X0205-050	Packing	
8	X0195-090	Cup Base Ass'y	
9	X0227-060	Shaft Washer	
10	X0411-100R	Connector (Upper)	
11	X0213-010	Safety Device Lever A	
12	X0213-020	Safety Device Lever B	
13	X0213-030	Safety Device Lever C	
14	XTW3+10BVW	Screw	
15	VB99-184-\$	Connector (Lower)	
16	X0550-710	Cord U	 PGF/UAE/OMAN
17	X0110-440	Body U	
18	X0104-010	Seal Cap	
19	X0505-010	Safety Devica Pin	
20	X0501-270	Switch Ass'y	
21	X0705-020	Motor Cover	
22	35-069117	Ring Washer	
23	92-029889C	Armature Ass'y	
24	91-0292145C	Field Ass'y	
25	35-069102	Fiber Washer	
26	35-069069	Baku Washer	
27	X0712-020	Frame A	
28	53-029086	Brush Ass'y	
29	21-029011	Carbon Box	
30	21-019034	Lead Wire Terminal	
31	38-109103R	Motor Setting Screw	
32	X0130-120	Bottom Plate	
33	X0133-020	Leg	
34	XTN4+20BFJ	Screw	
35	X0173-271	Name Plate	PGF/UAE/OMAN
36	X0535-120	Lead Wire U	
37	X0203-210	Mill Cup	
38	X0224-120T	Mill Cutter Ass'y	
39	X0195-100	Mill Cup Base Ass'y	
40	X0103-020	Body Cover Gum	
41	X0701-391	Motor Ass'y	
	X0920-100	Post Card	
	X0911-250	Protection A	
	X0912-250	Protection B	
	X0915-090	Paper Plate	
	X0909-830	Operation Book	PGF/UAE/OMAN
	X0903-780	Carton	PGF/UAE/OMAN
42	X0195-100D	Mill Cup Base Ass'y (White)	

# PARTS LOCATION: Model No. MX-J225GWITH



# REPLACEMENT PARTS LIST: Model No. MX-J225GWTH

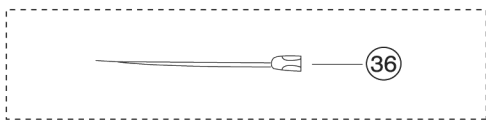
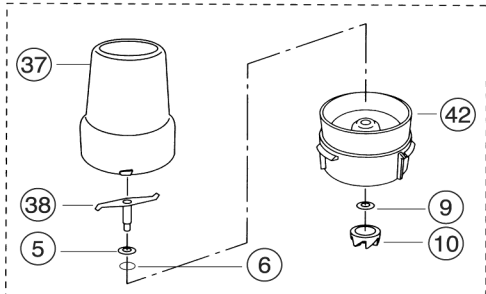
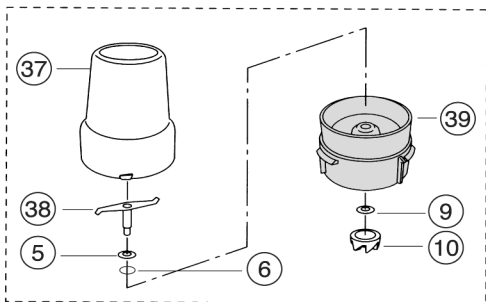
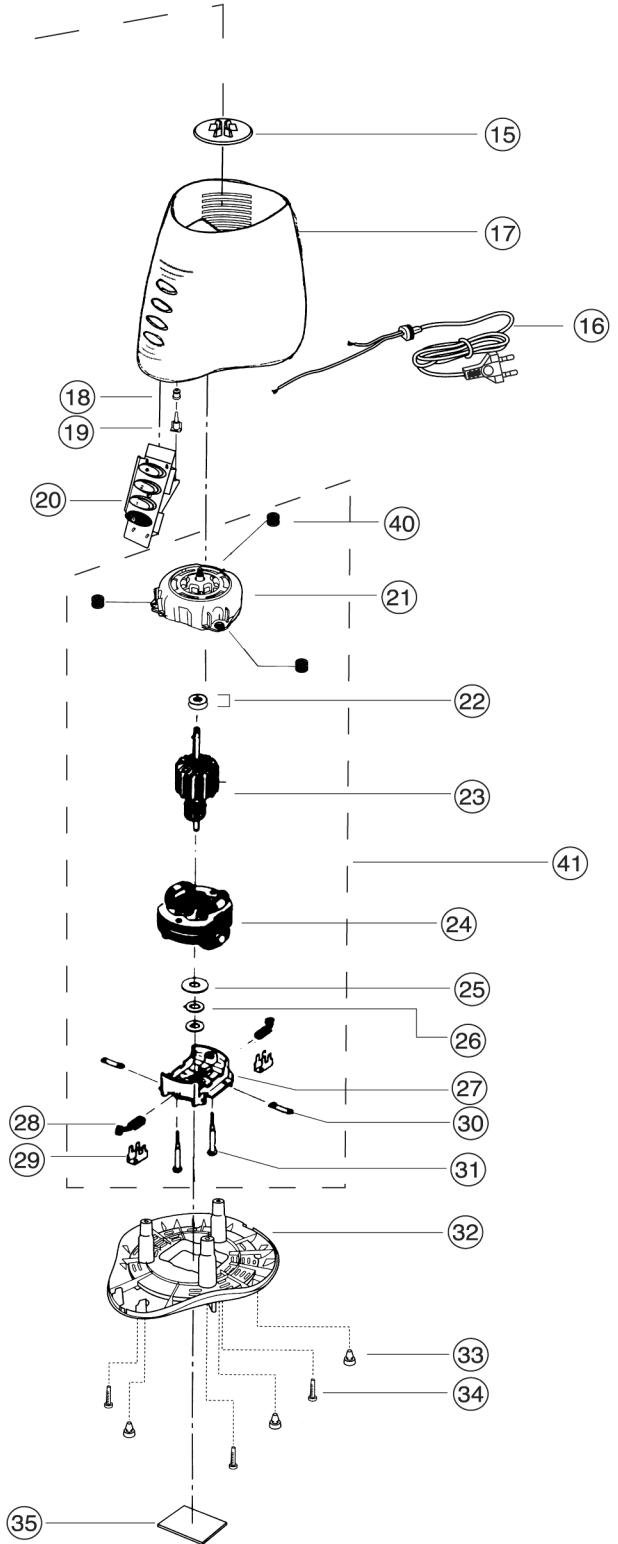
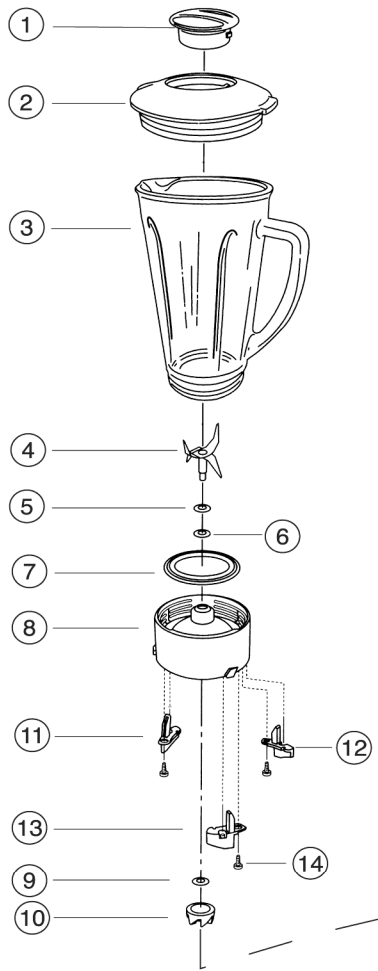
## Important safety notice

Components identified by  mark have special characteristics for safety

When replacing any of these components, use only manufacturer's specified parts.

Ref. No.	Part No.	Part Name & Description	Remarks
1	X0202-060	Cover B	
2	X0201-110	Cover A	
3	X0203-250	Juice Cup (G)	
4	X0224-110T	Juice Cutter Ass'y	
5	X0217-010	Waver Washer	
6	X0227-030	Main Shaft Washer	
7	X0205-050	Packing	
8	X0195-090	Cup Base Ass'y	
9	X0227-060	Shaft Washer	
10	X0411-100R	Connector (Upper)	
11	X0213-010	Safety Device Lever A	
12	X0213-020	Safety Device Lever B	
13	X0213-030	Safety Device Lever C	
14	XTW3+10BVW	Screw	
15	VB99-184-\$	Connector (Lower)	
16	X0550-670	Cord U	 KUWAIT
17	X0110-440	Body U	
18	X0104-010	Seal Cap	
19	X0505-010	Safety Devica Pin	
20	X0501-270	Switch Ass'y	
21	X0705-020	Motor Cover	
22	35-069117	Ring Washer	
23	92-029889C	Armature Ass'y	
24	91-0292145C	Field Ass'y	
25	35-069102	Fiber Washer	
26	35-069069	Baku Washer	
27	X0712-020	Frame A	
28	53-029086	Brush Ass'y	
29	21-029011	Carbon Box	
30	21-019034	Lead Wire Terminal	
31	38-109103R	Motor Setting Screw	
32	X0130-120	Bottom Plate	
33	X0133-020	Leg	
34	XTN4+20BFJ	Screw	
35	X0173-281	Name Plate	KUWAIT
36	X0535-120	Lead Wire U	
37	X0203-210	Mill Cup	
38	X0224-120T	Mill Cutter Ass'y	
39	X0195-100	Mill Cup Base Ass'y	
40	X0103-020	Body Cover Gum	
41	X0701-391	Motor Ass'y	
	X0920-100	Post Card	
	X0911-250	Protection A	
	X0912-250	Protection B	
	X0915-090	Paper Plate	
	X0909-830	Operation Book	KUWAIT
	X0903-790	Carton	KUWAIT
42	X0195-100D	Mill Cup Base Ass'y (White)	

# PARTS LOCATION: Model No. MX-J225GWTM



## REPLACEMENT PARTS LIST: Model No. MX-J225GWTM

### Important safety notice

Components identified by ⚠ mark have special characteristics for safety

When replacing any of these components, use only manufacturer's specified parts.

Ref. No.	Part No.	Part Name & Description	Remarks
1	X0202-060	Cover B	
2	X0201-110	Cover A	
3	X0203-250	Juice Cup (G)	
4	X0224-110T	Juice Cutter Ass'y	
5	X0217-010	Waver Washer	
6	X0227-030	Main Shaft Washer	
7	X0205-050	Packing	
8	X0195-090	Cup Base Ass'y	
9	X0227-060	Shaft Washer	
10	X0411-100R	Connector (Upper)	
11	X0213-010	Safety Device Lever A	
12	X0213-020	Safety Device Lever B	
13	X0213-030	Safety Device Lever C	
14	XTW3+10BVW	Screw	
15	VB99-184-\$	Connector (Lower)	
16	X0550-710	Cord U	⚠ QATAR/BAHRAIN
17	X0110-440	Body U	
18	X0104-010	Seal Cap	
19	X0505-010	Safety Devica Pin	
20	X0501-270	Switch Ass'y	⚠
21	X0705-020	Motor Cover	
22	35-069117	Ring Washer	
23	92-029889C	Armature Ass'y	⚠
24	91-0292145C	Field Ass'y	⚠
25	35-069102	Fiber Washer	
26	35-069069	Baku Washer	
27	X0712-020	Frame A	
28	53-029086	Brush Ass'y	⚠
29	21-029011	Carbon Box	⚠
30	21-019034	Lead Wire Terminal	⚠
31	38-109103R	Motor Setting Screw	
32	X0130-120	Bottom Plate	
33	X0133-020	Leg	
34	XTN4+20BFJ	Screw	
35	X0173-291	Name Plate	QATAR/BAHRAIN
36	X0535-120	Lead Wire U	⚠
37	X0203-210	Mill Cup	
38	X0224-120T	Mill Cutter Ass'y	
39	X0195-100	Mill Cup Base Ass'y	
40	X0103-020	Body Cover Gum	
41	X0701-391	Motor Ass'y	⚠
	X0911-250	Protection A	
	X0912-250	Protection B	
	X0915-090	Paper Plate	
	X0909-830	Operation Book	QATAR/BAHRAIN
	X0903-790	Carton	QATAR/BAHRAIN
42	X0195-100D	Mill Cup Base Ass'y (White)	

# PACKING INSTRUCTIONS: MODEL NO. MX-J225G

