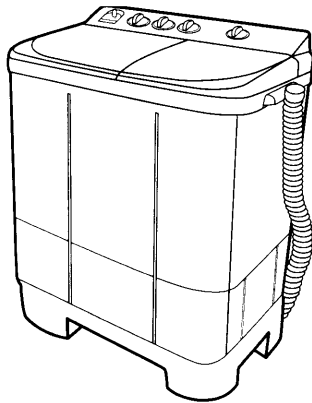


# Service Manual

Washing Machine

NA-W7000X

NA-W8000X



22 JAN 2002

## ⚠ WARNING

This service information is designed for experienced repair technicians only and is not designed for use by the general public. It does not contain warnings or cautions to advise non-technical individuals of potential dangers in attempting to service a product. Products powered by electricity should be serviced or repaired only by experienced professional technicians. Any attempt to service or repair the product or products dealt with in this service information by anyone else could result in serious injury or death.

## IMPORTANT SAFETY NOTICE

There are special components used in this equipment which are important for safety. These parts are marked by ⚠ in the Schematic Diagrams, Circuit Board Diagrams, Exploded Views and Replacement Parts List. It is essential that these critical parts should be replaced with manufacturer's specified parts to prevent shock, fire or other hazards. Do not modify the original design without permission of manufacturer.

## Specifications

Lists		Particulars	
Voltage		AC127V/60Hz, 220V/50Hz, 220V/60Hz, 230V/50Hz, 240V/50Hz	
Machine Weight		26 Kg.	
External Dimension		Width 782 mm. Depth 473.5 mm. Height 952 mm.	
Rotation	Pulsator r/min.	50Hz:190 r/min., 60Hz:210 r/min.	
	Spin Tub r/min.	50Hz:1,300 r/min., 60Hz:1,500 r/min.	
Motor	Wash	650 Watts	
	Spin	170 Watts	
Wash Level		High	49 L
		Med.	43 L
		Low	37 L
		Little	28 L
Wash Timer		0 To 45 Min. ( NA-W8000X )	0 To 15 Min. ( NA-W7000X )
Wash selector	NA-W7000X	REGULAR (4.0 Sec. ON-4.0Sec. OFF) , GENTLE (3.0 Sec.ON-5.0 Sec.OFF)	
	NA-W8000X	REGULAR (3.85 Sec. ON-3.0Sec. OFF) , GENTLE (2.85 Sec.ON-4.0 Sec.OFF)	
Spin Timer		0 To 5 Min. Mechanical	
Spinning System		Centrifugal type	
Braking System		Mechanical type	

# National

© 2002 Matsushita Home Appliance (Thailand) Co.,Ltd  
All rights reserved. Unauthorized copying  
and distribution is a violation of law

## CONTENTS

Substantial accessories.....	3-4
Electric circuit.....	5
Accessory and spare parts removing .....	6-7
Analyzing the operating problem.....	8
Section illustration of the abovea ccessories .....	9
The head spare part items.....	10
Section illustration of the middle accessories.....	11
The middle spare parts item .....	12
Section illustration of the bottomaccessories.....	13
The bottom spare parts items.....	14
Procedure of packing.....	15
Items of packing.....	16

**Usage** : Using for a repair and changing spare parts for products of washing machines of only National Model NA-W7000X,NA-W8000X

**Instruction for Usage** : The application for repair and changing spare parts should be operated by skillful technician from the stores of agents for distribution, or service

**Warning** : As repairing or changing spare parts, prior it shall be switched off, and may by caused for short circuit

## NAME OF PARTS

### NA-W8000X

1.Control Panel of Washing Tub, Spinner tub Lid

2.Inlet Hose Connector

3.Water Supply Selector

4.Wash Lid

5.Wash Tub

6.Overflow filter

7.Pulsator

8.Spinner Lid

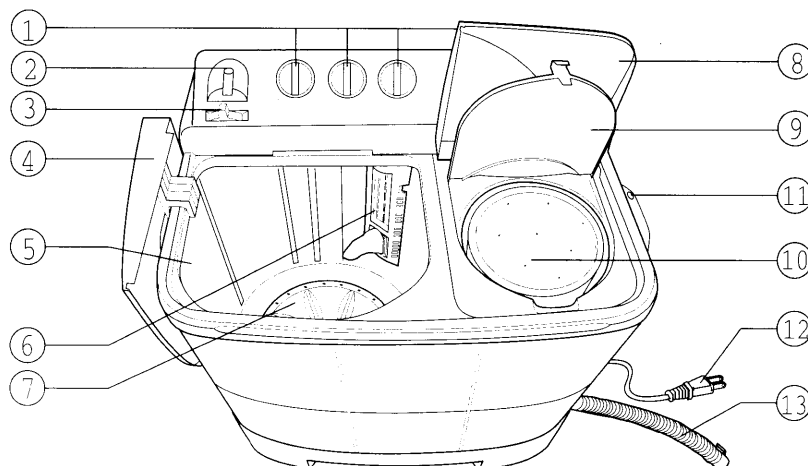
9.Inner Lid

10.Spinner Tub

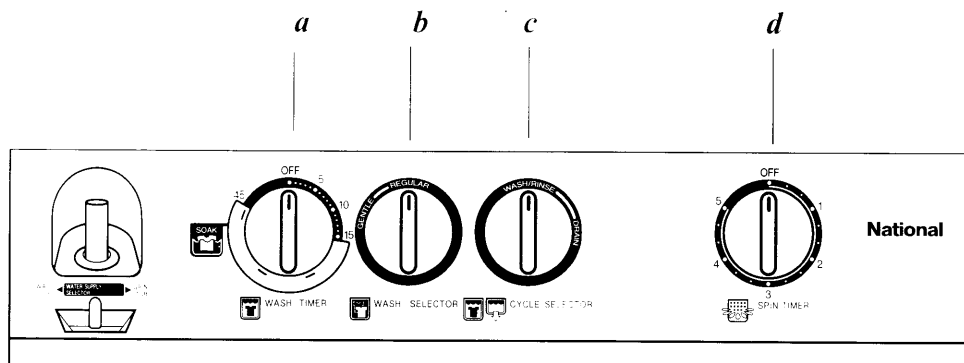
11.Drain Hose Hanger

12.Power cord

13.Drain Hose



## Control Switch



a) WASH TIMER : After washing or water washing in washing container, the time selection can be operated to wash with wash timer

You can control the wash ( WASH/RINSE ) time anywhere between 15 minutes of time. When adjusting the timer to less than 2 minutes, first turn the knob all the way to 5 minutes, then turn it back to the desired time.

WASH TIMER : it contains program of soaking fabric as the following:

Work (5 Min.)	stop (7 Min.)	Work (2 Min.)	Stop (7 Min.)	Work (2 Min.)	Stop (7 Min.)	Work (15 Min.)
45.00'	40.00'	38.00'	31.00'	29.00'	22.00'	15.00'
						0.00'

b) WASH SELECTOR : Selective Knob for washing contains 2 positions

- REGULAR : Using with ordinary fabric
- GENTLE : Using with plain fabric

c) CYCLE SELECTOR

Use this choose between WASH, rinse and DRAIN

d) SPIN TIMER : it is determinative tool in order to spin throwing off water. if it is required to stop working, turn anti-clockwise till hearing the sound "click"

## NAME OF PARTS

### NA-W7000X

1.Control Panel of Washing Tub, Spinner tub Lid

2.Inlet Hose Connector

3.Water Supply Selector

4.Wash Lid

5.Wash Tub

6.Overflow filter

7.Pulsator

8.Spinner Lid

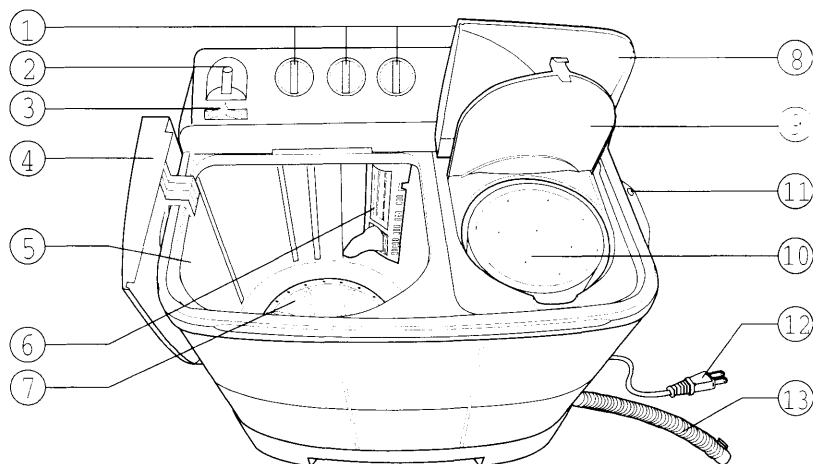
9.Inner Lid

10.Spinner Tub

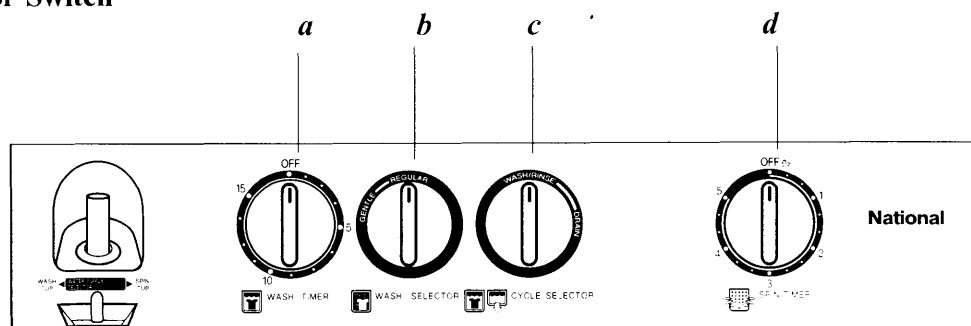
11.Drain Hose Hanger

12.Power cord

13.Drain Hose



## Control Switch



a) WASH TIMER : After washing or water washing in washing container,the time selection can be operated to wash with wash timer  
You can control the wash ( WASH/RINSE ) time anywhere between 15 minutes of time. When adjusting the timer to less 2 minutes, first turn the knob all the way to 5 minutes,then turn it back to the desired time.

b) WASH SELECTOR : Selective Knob for washing contains 2 positions

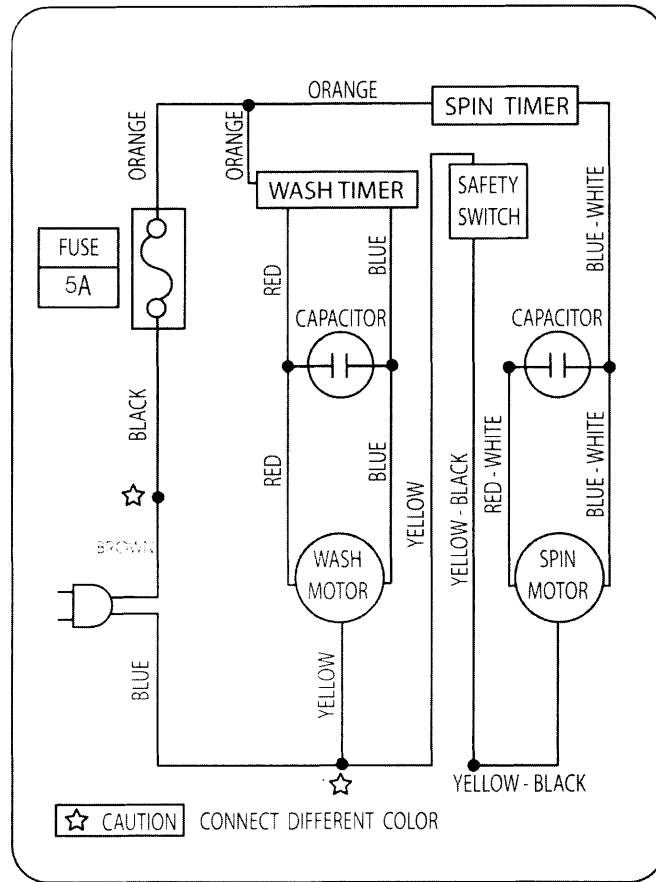
- REGULAR : Using with ordinary fabric
- GENTLE : Using with plain fabric

c) CYCLE SELECTOR

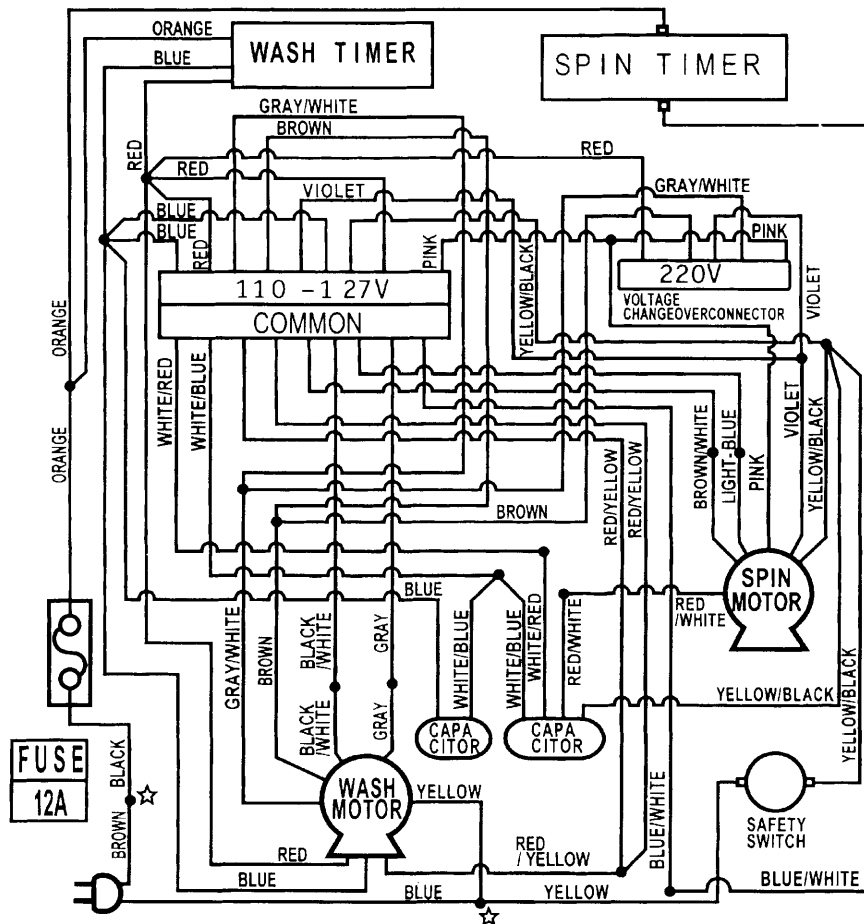
Use this choose between WASH,rinse and DRAIN

d) SPIN TIMER : it is deterinative tool in order to spin throwing off water. if it is required to stop working,turn anti-clockwise till hearing the sound "click"

## WIRING DIAGRAM



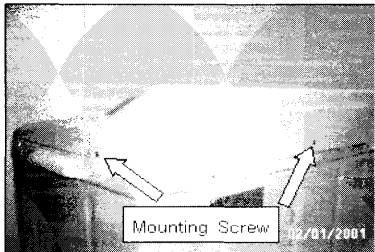
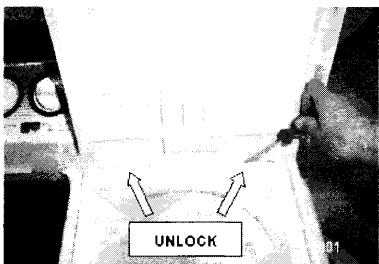
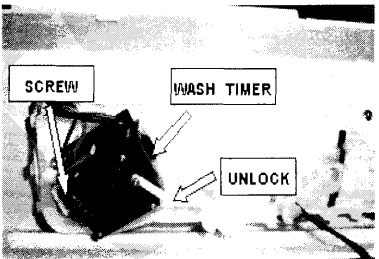
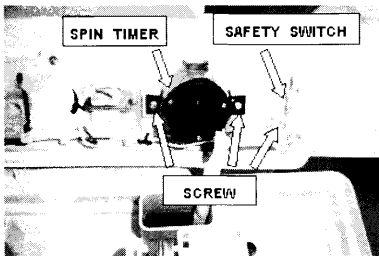
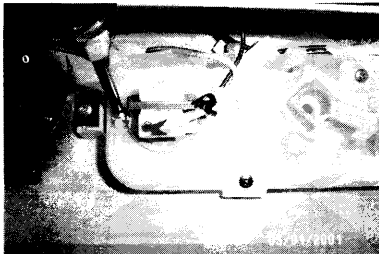
\*FOR SIN/REX,FIJ,MAD,TAH,MALKUW,QAT,SEY,BAH, UAE, OMA, JOR, LEB,UAE/PGF


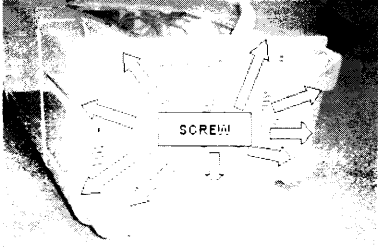

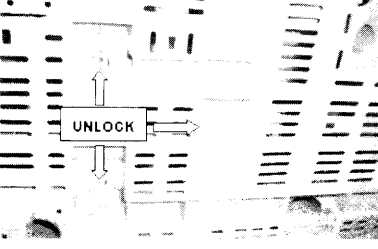
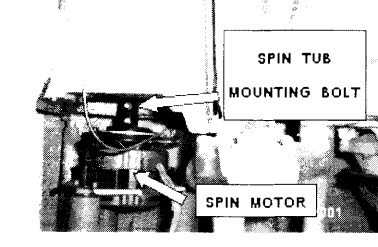
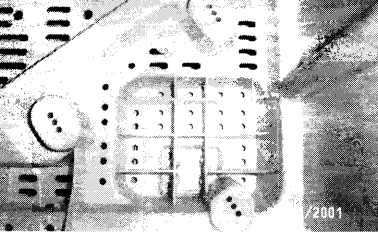


\*FOR SAU

## DISASSEMBLY

Warning	Warning
Linking an electric circuit between repairing. Please check at the picture of the electric circuit and strictly link the circuit because it may cause a damage or fire.	Before attempting to service or adjust any part of the machine, Disconnect the electrical power supply from the wall outlet

NO.	PICTURE	Step of taking off
1		<p><b>The tool : Screwdriver, flat screw driver, special screwdriver pincer about 3.5 cm. long</b></p> <ul style="list-style-type: none"> <li>● <b>Taking panel A off</b></li> </ul> <ol style="list-style-type: none"> <li>1 Take the 3 switches off knob in front of the machine off.</li> <li>2 Release the screw next to panel A (3 pieces) as in the 1st picture</li> <li>3 Open the cover of dry spin tub and release 2 fangs as in the second picture by screwdriver and pull panel A</li> <li>4 Release the garter at the electric fire and raise panel A</li> </ol>
2		<ul style="list-style-type: none"> <li>● <b>Taking wash timer ( setting clock washing time ) 3rd picture</b></li> </ul> <ol style="list-style-type: none"> <li>5 Take valve roc C off</li> <li>6 Release the tape that twist around the wire of Wash Timer</li> <li>7 Release the screw of Wash Timer and pull the wash</li> <li>8 Cut the wire of Wash Timer</li> </ol>
3		<ul style="list-style-type: none"> <li>● <b>Taking spin timer 4th picture</b></li> </ul> <ol style="list-style-type: none"> <li>5 Release the tape that twist around the wire of spin timer</li> <li>6 Release the screw of spin timer and pull spintimer. While pulling it, You must twist timer to the position "OFF"</li> <li>7 Cut the wire of spin timer</li> </ol>
4		<ul style="list-style-type: none"> <li>● <b>Taking safety switch off 4th picture</b></li> </ul> <ol style="list-style-type: none"> <li>5 Release the tape from the wire of safety switch.</li> <li>6 Release screw of safety switch</li> <li>7 Cut the wire of safety switch.</li> </ol>
5		<ul style="list-style-type: none"> <li>● <b>Taking buzzer off 5th picture</b></li> </ul> <ol style="list-style-type: none"> <li>5 Release the tape that twist around the wire of buzzer</li> <li>6 Release the 2 screws of buzzer</li> <li>7 Cut the wire of buzzer</li> </ol>

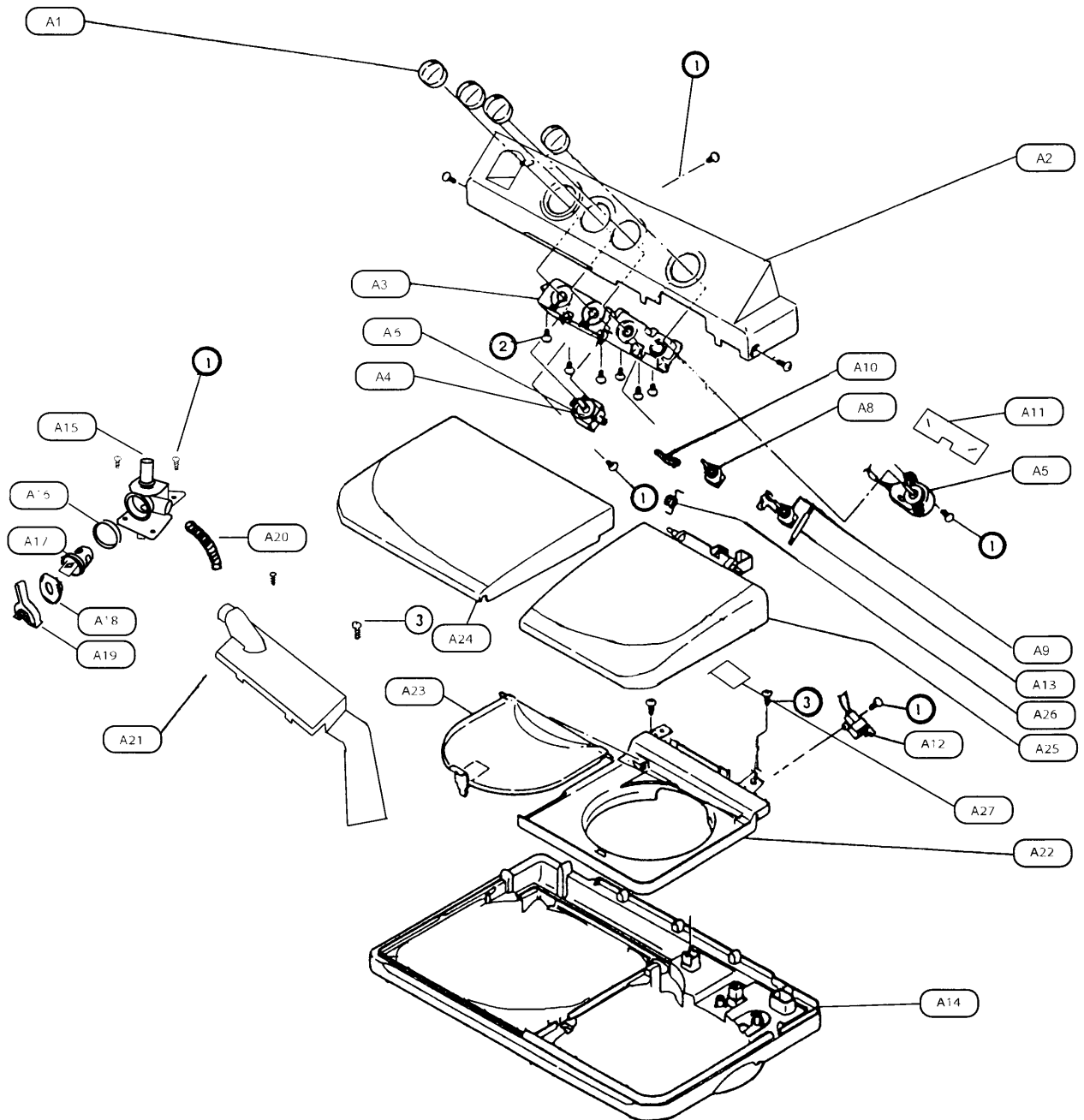
NO.	PICTURE	Steps of Taking off
6		<ul style="list-style-type: none"> <li>● <b>Taking motor spin off</b></li> </ul>
7		<ol style="list-style-type: none"> <li>1. Take the back panel off by release 1 screw and 4 locked fang and slide back panel then turn upside down the machine on the floor with something that protect the machine from the floor.</li> <li>2. Take valve rod C off</li> <li>3. Release nut and bolt that hold coupling together with brake wheel of motor spin as the 10th picture</li> <li>4. Release the flexible wire unit from motor spin as the 10th picture</li> <li>5. Take off v-belt from impeller Pulley and Motorwash as the 8th picture</li> <li>6. Release the 7 screws of base A and tub A by using the special screwdriver and pull its base as the 7th picture</li> <li>7. Cut the wire of motor wash and take off the 3bolt of motor wash then can raise motor wash.</li> </ol>
8		<ul style="list-style-type: none"> <li>● <b>Take motor spin off</b></li> </ul>
9		<ol style="list-style-type: none"> <li>1. Take the back panel off by release 1 screw and 4 locked fang and slide panel then turn upside down the machine on the floor with something that protect the machine from the floor</li> <li>2. Tack valve Rod C off</li> <li>3. Release nut and bolt that hold coupling together whit brake wheel of motor spin as the tenth picture</li> <li>4. Release the flexible wire unit from motor spin as the tenth picture</li> <li>5. Take off v-belt from impeller pulley and motor wash asthe 8th picture</li> <li>6. Release the 9 screws of base a and tub A by using the special screwdriver and pullits base as the 7th picture</li> <li>7. Cut the wire of the motor spin and release locked fang of suuspension holder B of 3 motor spin then you can raise</li> </ol>
10		<ul style="list-style-type: none"> <li>● <b>Adjust the v-belt</b></li> </ul>
11		<ul style="list-style-type: none"> <li>● <b>Adjustment of motor'sbrake</b></li> </ul>

## PROBLEM ANALYSIS

DAMAGE	POSSIBLE MOTIVE	IMPROVEMENT
<b>General</b> <b>Machine dose not work</b>	<ul style="list-style-type: none"> <li>- loose-fitting plug</li> <li>- electric current problem</li> <li>- machine's input wire was torn</li> </ul>	<ul style="list-style-type: none"> <li>- pull a cut-out and tight it or change the new one.</li> <li>- change a fuse or reset circuit breaker</li> <li>- change the new wire</li> </ul>
<b>Washing system</b> <b>Washing motor dose not work</b>	<ul style="list-style-type: none"> <li>- a contact of wash timer was out of action</li> <li>- motor's coil was torn</li> <li>- capacitor was short or torn</li> <li>- a wire got loose at the linked point of wash timer's leg</li> <li>- a wire was torn</li> </ul>	<ul style="list-style-type: none"> <li>- change wash timer</li> <li>- change wash timer</li> <li>- change a motor</li> <li>- change capacitor</li> <li>- solder again</li> <li>- put together tightly or change the new one</li> </ul>
<b>Loudly motor does not work</b> <b>and can not start</b>	<ul style="list-style-type: none"> <li>- washing propellant was locked</li> <li>- capacitor was short or torn</li> </ul>	<ul style="list-style-type: none"> <li>- fix the part that have problem or take something that hinder out</li> <li>- change capacitor</li> </ul>
<b>Washing motor spin only one way</b>	<ul style="list-style-type: none"> <li>- two-way contact of wash selector was out of action</li> </ul>	<ul style="list-style-type: none"> <li>- change wash timer</li> </ul>
<b>Washing motor works in two-way but</b> <b>in one-way it spins too long</b>	<ul style="list-style-type: none"> <li>- contact of washing timer was out of action</li> </ul>	<ul style="list-style-type: none"> <li>- change wash timer</li> </ul>
<b>Clothes was torn after washing</b>	<ul style="list-style-type: none"> <li>- the quantity of clothes and water are not balanced</li> </ul>	<ul style="list-style-type: none"> <li>- introduce the users the way to use the machine</li> <li>- fix or replace the new lathe-strap</li> </ul>
<b>Clothes was torn after washing</b>	<ul style="list-style-type: none"> <li>- clearance between washing propellant and tub doesn't correct</li> <li>- there is sharpness of the screw's head of washing propellant</li> <li>- too little water</li> </ul>	<ul style="list-style-type: none"> <li>- adjust washing propellant to be equal with a tub</li> <li>- erase sharpness or change a new screw</li> <li>- add water so that clothes can float and easily are spin</li> </ul>
<b>Dry spin system</b> <b>Dry spin tub doesn't spin</b>	<ul style="list-style-type: none"> <li>- a cover of dry spin tub was opened</li> <li>- break was out of action</li> <li>- break strap got loose or was torn</li> <li>- safety strap wasn't in the right position</li> <li>- capacitor was short or torn</li> <li>- coil of dry spin motor was torn of dry spin tub was torn</li> <li>- brake wheel's screw was not tight</li> <li>- spin timer was out of action</li> <li>- the link point of spin timer or capacitor got loose</li> <li>- litter colled around coupling shaft</li> </ul>	<ul style="list-style-type: none"> <li>- close a cover of dry spin tub</li> <li>- adjust clearance of brake wheel and brake strap by do it at the brake strap</li> <li>- put it again or change the new strap</li> <li>- adjust the position</li> <li>- change the capacitor</li> <li>- change new motor</li> <li>- screw tightly</li> <li>- change spin timer</li> <li>- link again</li> <li>- take litter out</li> </ul>
<b>Dry spin tub vibrated</b>	<ul style="list-style-type: none"> <li>- the machine was on the unstable area</li> <li>- outer tub buffer was out of action</li> <li>- clothes inside the dry spin tub was not balanced</li> <li>- middle axis of dry spin tub grazed with something that fallen into outer tub cover</li> </ul>	<ul style="list-style-type: none"> <li>- put the machine on the stable area</li> <li>- change outer tub buffer A</li> <li>- adjust suspension</li> <li>- take litter that fallen into outer tub cover out</li> </ul>
<b>Others</b> <b>Water leaked</b>	<ul style="list-style-type: none"> <li>- outer tub buffer A was out of action</li> <li>- drain pipe was torn</li> <li>- overflow pipe was broken</li> <li>- tub A was broken</li> </ul>	<ul style="list-style-type: none"> <li>- change outer tub A</li> <li>- change new pipe</li> <li>- change overflow</li> <li>- change tub A</li> </ul>
<b>Drain valve was not closed</b>	<ul style="list-style-type: none"> <li>- there's litter fallen inside the space between valve frame and valve packing</li> <li>- valve packing was out of action</li> <li>- screw of pulley at the side of motor was loose</li> </ul>	<ul style="list-style-type: none"> <li>- take off valve lid assembly and litter</li> <li>- change all set of outer tub buffer A</li> <li>- screw tightly</li> </ul>



# LOCATION OF PARTS-A

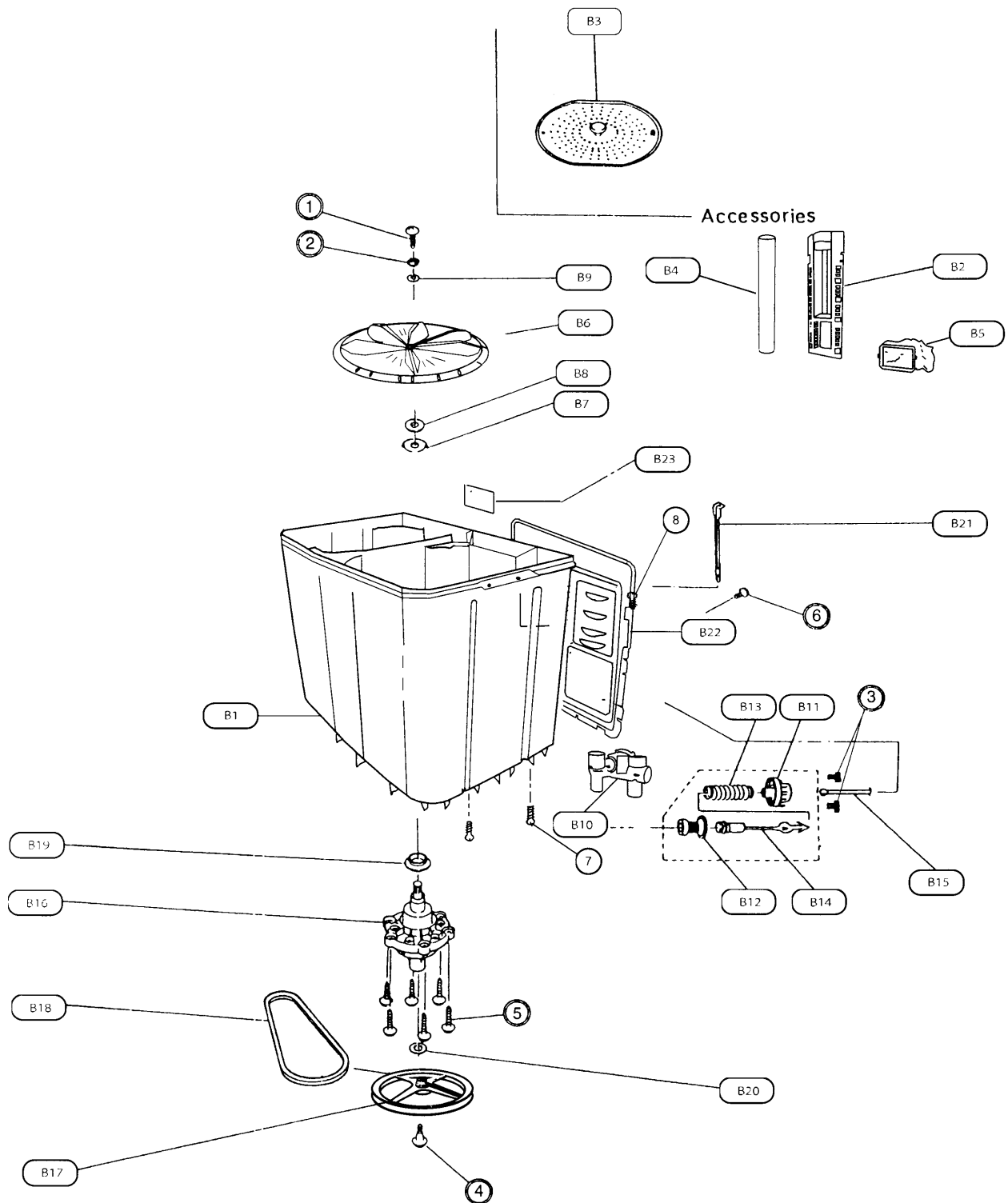


**NOTE** All of replacement spare parts listed below except Ref.No. C-4 will be supplied from MAT ( Matsushita Home Appliance ( Thailand ) Co.,Ltd. ) through PLGA in Singapore Ref. No. C-4 AXW3226-4135 (Outer Tub Buffer A ) is supplied from Home Utility Appliances Division in Japan

## REPLACEMENT PARTS LIST-A

REF.NO	DESCRIPTION	PART NO.	PCS/SET	REMARKS
A-1	TIMER KNOB A	AXW6050DC00D	1	*For KUW, QAT, SEY, BAH, UAE, OMA, JOR, LEB,UAE/PGF,SAU
A-1	TIMER KNOB A	AXW6050DC0PS	1	*For SIN/REX,FIJ,MAD,TAH,MAL
A-2	PANEL A	AXW1300DT00D	1	NA-W7000X *For KUW, QAT, SEY, BAH, UAE, OMA, JOR, LEB,UAE/PGF,SAU
A-2	PANEL A	AXW1300DU0PS	1	NA-W7000X *For SIN/REX,FIJ,MAD,TAH,MAL
A-2	PANEL A	AXW1300DR00D	1	NA-W8000X *For KUW, QAT, SEY, BAH, UAE, OMA, JOR, LEB,UAE/PGF,SAU
A-2	PANEL A	AXW1300DS0PS	1	NA-W8000X *For SIN/REX,FIJ,MAD,TAH,MAL
A-3	SWITCH COVER	AXW0184-0DG0	1	NA-W7000X
A-3	SWITCH COVER	AXW0184-0DC0	1	NA-W8000X
A-4	TIMER SWITCH WASH	AXW601-28000	1	NA-W7000X
A-4	TIMER SWITCH WASH	AXW601-27700	1	NA-W8000X
A-5	TIMER SWITCH SPIN	AXW601-15550	1	
A-6	WRINGER FRAME PACKING A	AXW212-0M20A	1	
A-8	VALVE LEVER A	AXW911-0AR0A	1	NA-W8000X
A-9	VALVE LEVER A	AXW911-4L0	1	
A-10	VALVE ROD C	AXW986-0AR0A	1	NA-W8000X
A-11	MAGNET BOARD	AXW1197-0DC0	1	
A-12	SAFETY SWITCH	AXW1661-G100	1	
A-13	FLAT SPRING	AXW951-01G00	1	
A-14	BODY B	AXW1020DC00D	1	*For KUW, QAT, SEY, BAH, UAE, OMA, JOR, LEB,UAE/PGF,SAU
A-14	BODY B	AXW1020DC0PS	1	*For SIN/REX,FIJ,MAD,TAH,MAL
A-15	FEEDING PORT A	AXW265-0DC00	1	
A-16	JOINT PACKING	AXW1292-0DC0	1	
A-17	VALVE ROTOR	AXW0904-0DC0	1	
A-18	CAP A	AXW0514-0DC0	1	
A-19	VALVE KNOB	AXW9610DC00D	1	*For KUW, QAT, SEY, BAH, UAE, OMA, JOR, LEB,UAE/PGF,SAU
A-19	VALVE KNOB	AXW9610DC0PS	1	*For SIN/REX,FIJ,TAH,MAL
A-20	FEED HOSE B	AXW1260-0DC0	1	
A-21	NOZZLE HOLDER	AXW0839-0DC0	1	
A22	OUTER TUB COVER	AXW322ADC00D	1	*For KUW, QAT, SEY, BAH, UAE, OMA, JOR, LEB,UAE/PGF,SAU
A22	OUTER TUB COVER	AXW322ADC0PS	1	*For SIN/REX,FIJ,MAD,TAH,MAL
A-23	INNER LID	AXW200-4L0	1	
A-24	LID	AXW1590DC00D	1	*For KUW, QAT, SEY, BAH, UAE, OMA, JOR, LEB,UAE/PGF,SAU
A-24	LID	AXW1590DC0PS	1	*For SIN/REX,FIJ,MAD,TAH,MAL
A-25	SPINNER LID	AXW3102DC00D	1	*For KUW, QAT, SEY, BAH, UAE, OMA, JOR, LEB,UAE/PGF,SAU
A-25	SPINNER LID	AXW3102DC0PS	1	*For SIN/REX,FIJ,MAD,TAH,MAL
A-26	LID HINGE SPRING	AXW1116-0DC0	1	
A-27	SPINNER LID LABEL	AXW1117-0AT5	1	*For KUW, QAT, SEY, BAH, UAE, OMA, JOR, LEB,UAE/PGF,SAU
A-27	SPINNER LID LABEL	AXW1117-0AR0	1	*For SIN/REX,FIJ,MAD,TAH,MAL
1	BIND TAPPING SCREW	XTB4+12C	8	
1	BIND TAPPING SCREW	XTB4+12C	3	
1	BIND TAPPING SCREW	XTB4+15C	4	

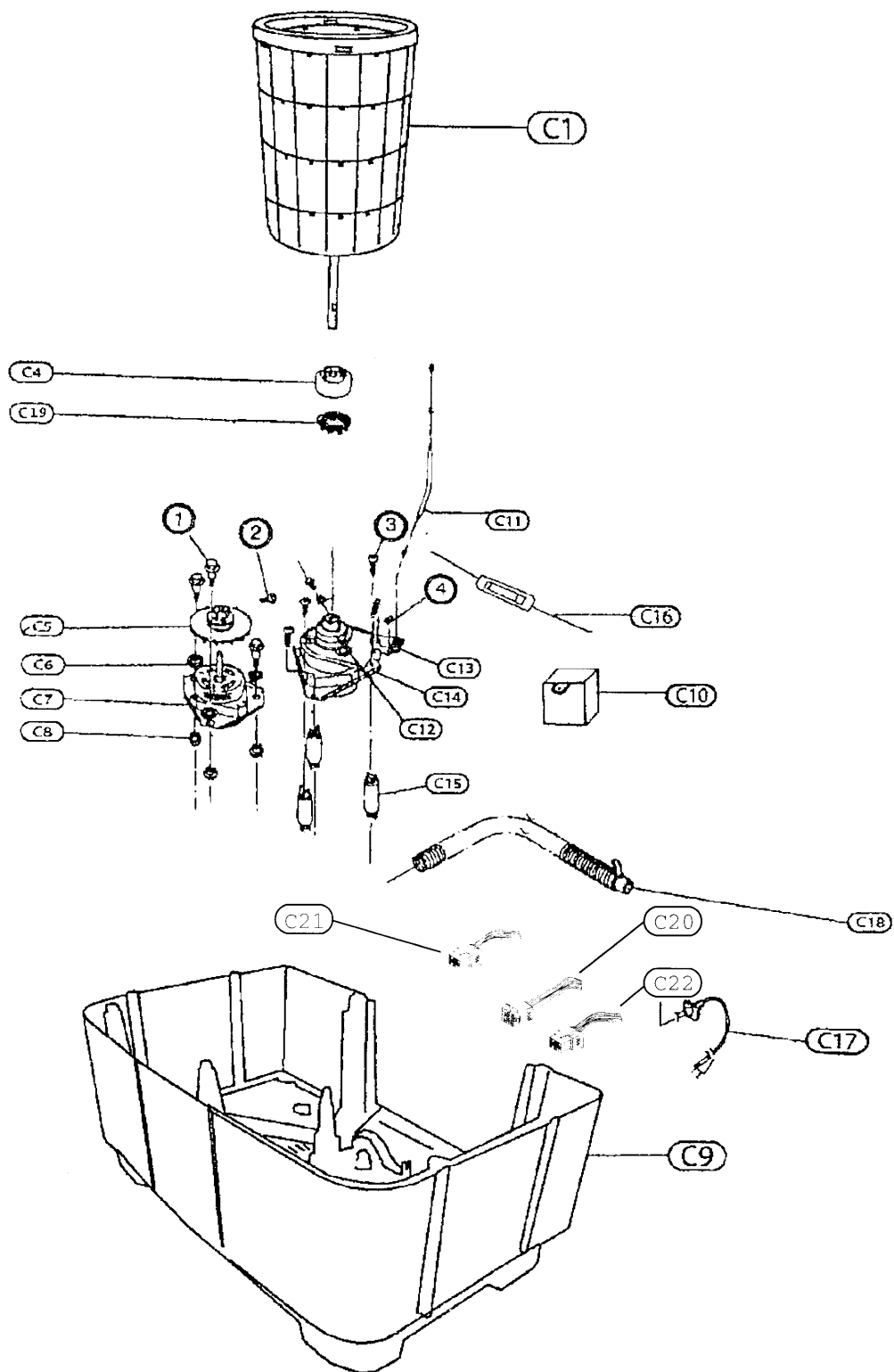
# LOCATION OF PARTS-B



## REPLACEMENT PARTS LIST-B

REF.NO	DESCRIPTION	PART NO.	PCS/SET	REMARKS
B-1	TUB A	AXW2010DC00D	1	*For KUW, QAT, SEY, BAH, UAE, OMA, JOR, LEB,UAE/PGF,SAU
B-1	TUB A	AXW2010DC0PS	1	*For SIN/REX,FIJ,MAD,TAH,MAL
B-2	OVERFLOW FILTER A	AXW2760DG50D	1	*For KUW, QAT, SEY, BAH, UAE, OMA, JOR, LEB,UAE/PGF,SAU
B-2	OVERFLOW FILTER A	AXW2760DG5PS	1	*For SIN/REX,FIJ,MAD,TAH,MAL
B-3	SPINNER CAP	AXW3215-G20A	1	
B-4	OVERFLOW PIPE	AXW0208-0L00	1	
B-5	FILTER UNIT	AXW022A-01G0	1	
B-6	PULSATOR UNIT	AXW005E-0DF0	1	
B-7	SHAFT BUSHING	AXW0504-0DC0	1	
B-8	BEARING CASE PACKING	AXW0215-4L0	1	
B-9	O-RING	AXW257-80200	1	
B-10	VALVE FRAME A	AXW0901-0DC0	1	
B-11	VALVE LID A	AXW0903-H20A	1	
B-12	VALVE PACKING	AXW909-00G00	1	
B-13	VALVE SPRING	AXW922-4L0	1	
B-14	VALVE ROD B	AXW981-0H20A	1	
B-15	VALVE ROD A	AXW0932-0DC0	1	
B-16	BEARING CASE UNIT	AXW05C-0L000	1	
B-17	IMPELLER PULLEY	AXW0502-0DF0	1	
B-18	V-BELT	AXW412-0L000	1	
B-19	BEARING CASE WASHER A	AXW507-00G0A	1	
B-20	PULSATOR SHAFT WASHER	AXW532-1060A	1	
B-21	ACTUATING LEVER A	AXW3469-0G0C	1	
B-22	BACK PANEL	AXW0156-0DC0	1	
B-23	SPECIFICATION PLATE	AXW0153-0DT0	1	NA-W7000X *For SIN/REX, FIJ, MAD, TAH
B-23	SPECIFICATION PLATE	AXW0153-0DU5	1	NA-W7000X *For OMA, UAE/REX
B-23	SPECIFICATION PLATE	AXW0153-0DU0	1	NA-W7000X *For KUW, QTA, SEY, BAH, UAE, JOR, LEB
B-23	SPECIFICATION PLATE	AXW0153-0DUB	1	NA-W7000X *For SAU
B-23	SPECIFICATION PLATE	AXW0153-0DR0	1	NA-W8000X *For SIN/REX, FIJ, MAD, TAH
B-23	SPECIFICATION PLATE	AXW0153-0DRB	1	NA-W8000X *For MAL
B-23	SPECIFICATION PLATE	AXW0153-0DS5	1	NA-W8000X *For OMA, UAE/REX
B-23	SPECIFICATION PLATE	AXW0153-0DS0	1	NA-W8000X *For KUW, QTA, SEY, BAH, UAE, JOR, LEB
B-23	SPECIFICATION PLATE	AXW0153-0DSB	1	NA-W8000X *For SAU
1	SPECIAL WASHER	XSSAXW673	1	
2	SPECIAL WASHER	X-W0651	1	
3	BIND TAPPING SCREW	XTB4+12C	1	
4	SPECIAL BOLT	XVGAXW653A	1	
5 6	BIND TAPPING SCREW	XTB4+12C	6 4	
7	BIND TAPPING SCREW	XTB4+15C	9	
8	BIND TAPPING SCREW	XTB4+12C	4	
9	SPECIAL TAPPING SCREW	XTWAXW436	2	

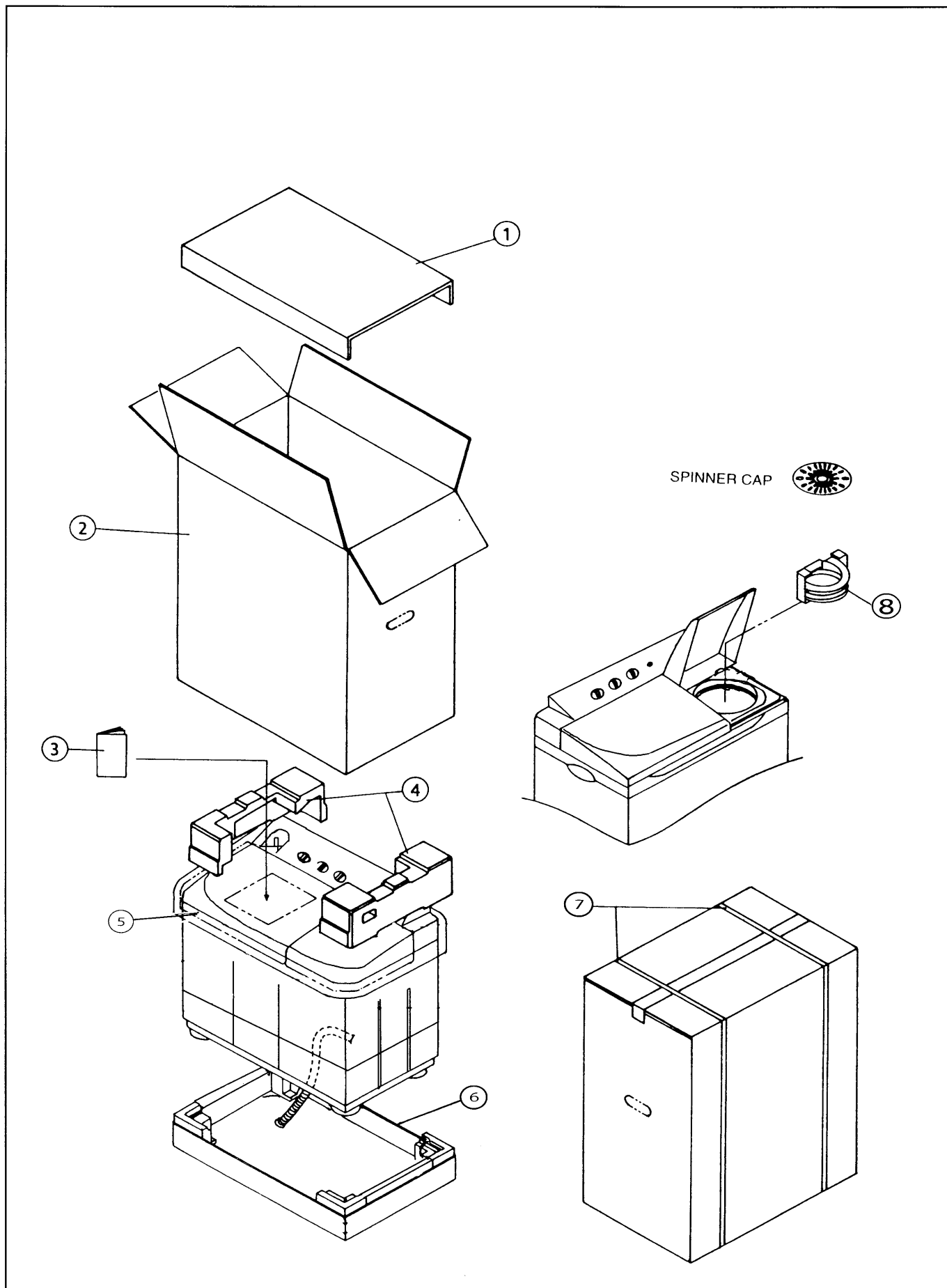
# LOCATION OF PARTS-C



## REPLACEMENT PARTS LIST-C

REF.NO	DESCRIPTION	PART NO.	PCS/SET	REMARKS
C-1	SPIN TUB A UNIT	AXW032A-0DC0	1	
C-4	OUTER TUB BUFFER A	AXW3226-4135	1	FROM HUD JAPAN/Inc C-19
C-5	MOTOR PULLEY	AXW0410-0DF0	1	
C-6	MOTOR WASHER B	AXW421-74100	1	
C-7	MOTOR WASH	AXW401-28404	1	*For SIN/REX,FIJ,MAD,TAH,MAL,KUW, QAT, SEY, BAH, UAE, OMA, JOR, LEB,UAE/PGF
C-7	MOTOR WASH	AXW401-28508	1	*For SAU
C-8	MOTOR WASHER A UNIT	AXW4E-87400	3	
C-9	BASE A	AXW3010DC00D	1	*For KUW, QAT, SEY, BAH, UAE, OMA, JOR, LEB,UAE/PGF,SAU
C-9	BASE A	AXW3010DC0PS	1	*For SIN/REX,FIJ,MAD,TAH,MAL
C-10	CAPACITOR	AXW403-88307	1	*For SIN/REX,FIJ,MAD,TAH,MAL,KUW, QAT, SEY, BAH, UAE, OMA, JOR, LEB,UAE/PGF
C-10	CAPACITOR	AXW403-88203	1	*For SAU
C-10	CAPACITOR	AXW403-7J807	1	*For SAU
C-11	FLEXIBLE WIRE UNIT	AXW015C-0DC0	1	
C-12	BRAKE WHEEL UNIT	AXW034E0DC60	1	
C-13	SPINNER PLATE UNIT	AXW34A-51520	1	
C-14	MOTOR SPIN	AXW401-28304	1	*For SIN/REX,FIJ,MAD,TAH,MAL,KUW, QAT, SEY, BAH, UAE, OMA, JOR, LEB,UAE/PGF
C-14	MOTOR SPIN	AXW401-28608	1	*For SAU
C-15	SUSPENSION UNIT	AXW034J-00G0	1	
C-16	FUSE UNIT	AXW14C-32300	1	*For SIN/REX,FIJ,MAD,TAH,MAL,KUW, QAT, SEY, BAH, UAE, OMA, JOR, LEB,UAE/PGF
C-16	FUSE UNIT	AXW14C-32400	1	*For SAU
C-17	POWER CORD UNIT	AXW04A-73701	1	*For FIJ
C-17	POWER CORD UNIT	AXW04A-77105	1	*For KUW, QUA, SEY,BAH, UAE, OMA
C-17	POWER CORD UNIT	AXW04A-77205	1	*For MAL
C-17	POWER CORD UNIT	AXW04A-77005	1	*For SAU
C-17	POWER CORD UNIT	AXW04A-72504	1	*For SIN/REX,MAD,TAH,JOR, LEB,UAE/PGF
C-18	HOSE B	AXW12701G00F	1	
C-19	BUFFER HOLDER A	AXW3227-4130	1	
C-20	CONNECTOR LEAD WIRE A	AXW2412-0DS0	1	*For SAU
C-21	CONNECTOR LEAD WIRE B(127V)	AXW2413-0DS0	1	*For SAU
C-22	CONNECTOR LEAD WIRE B(220V)	AXW2413-0DS5	1	*For SAU
1	SPECIAL TAPPING SCREW	XTWAXW525	3	
2	STOP SCREW	XXE08C12	1	
3	TRUSS TAPPING SCREW	XTT5+25A	3	
4	BIND TAPPING SCREW	XTB4+15C	1	

## PACKING INSTRUCTION



## REPLACEMENT PARTS PACKING

REF.NO	DESCRIPTION	PART NO.	PCS/SET	REMARKS
1	UPPER PAD	AXW9007-0DC0	1	
2	CASE A UNIT	AXW9001-0DT5	1	NA-W7000X*For SIN/REX,FIJ,MAD,TAH
2	CASE A UNIT	AXW9001-0DU0	1	NA-W7000X*For KUW, QAT, SEY, BAH, UAE, JOR, LEB, SAU
2	CASE A UNIT	AXW9001-0DU5	1	NA-W7000X*For OMA, UAE/PGF
2	CASE A UNIT	AXW9001-0DR5	1	NA-W8000X*For SIN/REX,FIJ,MAD,TAH
2	CASE A UNIT	AXW9001-0DV0	1	NA-W8000X*For MAL
2	CASE A UNIT	AXW9001-0DW0	1	NA-W8000X*For KUW, QAT, SEY, BAH, UAE, JOR, LEB, SAU
2	CASE A UNIT	AXW9001-0DS5	1	NA-W8000X*For OMA, UAE/PGF
3	OPERATING INSTRUCTION	AXW9901-0EG0	1	*FOR MAL
3	OPERATING INSTRUCTION	AXW9901-0DR0	1	*FOR FIJ, MAD, TAH
3	OPERATING INSTRUCTION	AXW9901-00DS	1	*For KUW, QAT, SEY, BAH, UAE, JOR, LEB, UAE/PGF
3	OPERATING INSTRUCTION	AXW9901-0DR5	1	*For SIN/REX
3	OPERATING INSTRUCTION	AXW9901-0DS5	1	*For SAU
4	SIDE CUSHION	AXW9004-0DC0	1	
5	POLYETHYLENE	AXW9060-04L0	1	
6	CASE B UNIT	AXW090B-0DC0	1	
7	PACKING BELT	AXW90951511A	1	
8	SPIN TUB SUPPORT FOAM	AXW90850BX0A	1	