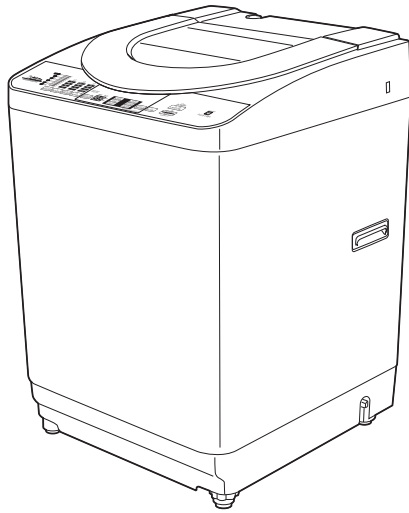


Service Manual

Fully Automatic Washing Machine



NA-F80G5
NA-F80X5
NA-F90G5
NA-F90X5
Export

⚠ WARNING

This service information is designed for experienced repair technicians only and is not designed for use by the general public. It does not contain warnings or cautions to advise non-technical individuals of potential dangers in attempting to service a product. Products powered by electricity should be serviced or repaired only by experienced professional technicians. Any attempt to service or repair the product or products dealt with in this service information by anyone else could result in serious injury or death.

IMPORTANT SAFETY NOTICE

There are special components used in this equipment which are important for safety. These parts are marked by **⚠** in the Schematic Diagrams, Circuit Board Diagrams, Exploded Views and Replacement Parts List. It is essential that these critical parts should be replaced with manufacturer's specified parts to prevent shock, fire or other hazards. Do not modify the original design without permission of manufacturer.

Specification

Model		NA-F80G5	NA-F80X5	NA-F90G5	NA-F90X5
Rate Voltage and Frequency	220V/50Hz	-	-	-	-
	230V/50Hz	Singapore	-	-	Singapore (IEC)
	240V/50Hz	Malaysia	Malaysia	Malaysia	Malaysia
Rate Power Consumption	220V/50Hz	-	-	450	-
	230V/50Hz	440	-	-	460
	240V/50Hz	450	450	470	470
Standard Water Consumption	172 Liter			177 Liter	
Standard Capacity	8 Kg			9 Kg	
Water Supply Pressure	0.03 to 1Mpa (0.3 to 10 kgf/cm ²)				
Outer Dimension	643 mm X 637 mm X 1042 mm				
Weight	41 Kg				

Contents

	Page
1. Specification.....	3
2. Features and Technical Information.....	4–5
3. Installation	6–7
4. Operations Panel.....	8
5. Wiring Diagram.....	9
6. Table of Errors.....	10
7. Troubleshooting.....	11–14
8. Location of Parts and Replacement Parts List	15–21

Usage : For repairs and change of spare part only for washing machine type
Panasonic Model NA-F80G5/NA-F80X5/NA-F90G5/NA-F90X5

Instruction for Usage : The work repair and changing of spare part should be operated
by a skilled technician from the distribution agents, or Panasonic' s
standard service center.

Warning : Switch off electrical power before commencing work to avoid a potential
short circuit or injury.

1. Specifications

NA-F80G5 / NA-F80X5

Voltage (AC)	230 V/50Hz : Singapore (IEC)		
	240 V/50Hz : Malaysia		
External Dimension	Width	Depth	Height
	643 mm	637 mm	1042 mm
Water Consumption (Normal Program)	172 liter		
Water Pressure	0.3-10 Kg.f/cm ² (8-25 liter/min)		
Pulsator (r.p.m)	110 r/min		
Spin Tub (r.p.m)	740 r/min		
Machine Weight	1 Kg		
Colour	Grey		

Motor Power	Input 320 Watts	Output 180 Watts
Safety Switch	Checking unbalance/ tub lid	
Alarm	Rings when finish washing or unusual	
Thermoprotector	Motor	
Water Inlet Hole	○	
Fabric softener dispenser	○	
Filter	○	
Automatic power-cut switch	○	
Accessories	Inlet pipe (1.2 m) Tab joint Drain pipe (80 cm) Rat –prevention screen	

NA-F90G5 / NA-F90X5

Voltage (AC)	220 V/50Hz : Indonesia, Iran (PGF)		
	230 V/50Hz : Singapore (IEC)		
	240 V/50Hz : Malaysia		
External Dimension	Width	Depth	Height
	643 mm	637 mm	1042 mm
Water Consumption (Normal Program)	177 liter		
Water Pressure	0.3-10 Kg.f/cm ² (8-25 liter/min)		
Pulsator (r.p.m)	110 r/min		
Spin Tub (r.p.m)	740 r/min		
Machine Weight	41 Kg		
Colour	Grey , Silver		

Motor Power	Input 320 Watts	Output 180 Watts
Safety Switch	Checking unbalance/ tub lid	
Alarm	Rings when finish washing or unusual	
Thermoprotector	Motor	
Water Inlet Hole	○	
Fabric softener dispenser	○	
Bleach dispenser	○	
Filter	○	
Automatic power-cut switch	○	
Accessories	Inlet pipe (1.2 m) Tab joint Drain pipe (80 cm) Rat prevention screen	

Standard Water Consumption Model NA-F80G5 / NA-F80X5

Wash Level	Water	Clothes Weight	
High	74 liters	8.0 Kg	66 liters
<High Lower>	69 liters	6.0 Kg	62 liters
Medium	62 liters	5.0 Kg	57 liters
<Medium Lower>	58 liters	4.2 Kg	53 liters
Low 1	52 liters	3.5 Kg	49 liters
<Lower 1 Lower>	48 liters	2.5 Kg	45 liters
Low 2	42 liters	1.5 Kg	40 liters
<Lower 2 Lower>	38 liters	1.1 Kg	35 liters
Low 3	32 liters	0.8 Kg	30 liters
<Lower 3 Lower>	16 liters	0.3 Kg	16 liters

Standard Water Consumption Model NA-F90G5 / NA-F90X5

Wash Level	Water	Clothes Weight	
High	74 liters	9.0 Kg	68 liters
<High Lower>	69 liters	6.0 Kg	62 liters
Medium	62 liters	5.0 Kg	57 liters
<Medium Lower>	58 liters	4.2 Kg	53 liters
Low 1	52 liters	3.5 Kg	49 liters
<Lower 1 Lower>	48 liters	2.5 Kg	45 liters
Low 2	42 liters	1.5 Kg	40 liters
<Lower 2 Lower>	38 liters	1.1 Kg	35 liters
Low 3	32 liters	0.8 Kg	30 liters
<Lower 3 Lower>	16 liters	0.3 Kg	16 liters

2. Features and Technical Information

Model NA-F80G5 / NA-F80X5 / NA-F90G5 / NA-F90X5

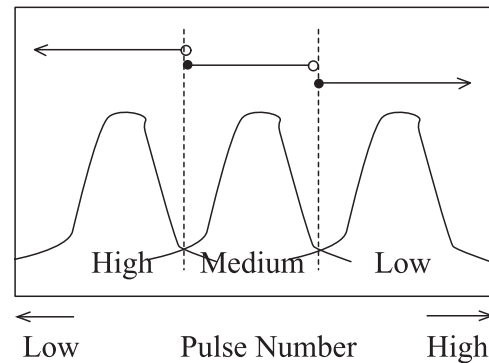
Program	Time
Normal	approx. 47-56 min
Mini	approx. 20 min
Speedy	approx. 26-32 min
Blanket	approx. 55 min
Delicate	approx. 29-32 min
Tub Hygiene	approx. 150 min
Soak 1 hour	approx. 107 min
Soak 8 hour	approx. 527 min

Product special features

Dial indicating detergent level after sensing wash level
 Pre-set timer
 Fabric softener dispenser
 Detergent dispenser
 Automatic power-off when finish
 Dial indicating unusual sign (LED will blink)
 Alarm ON-OFF
 Overflow sensing device

Weight Sensor

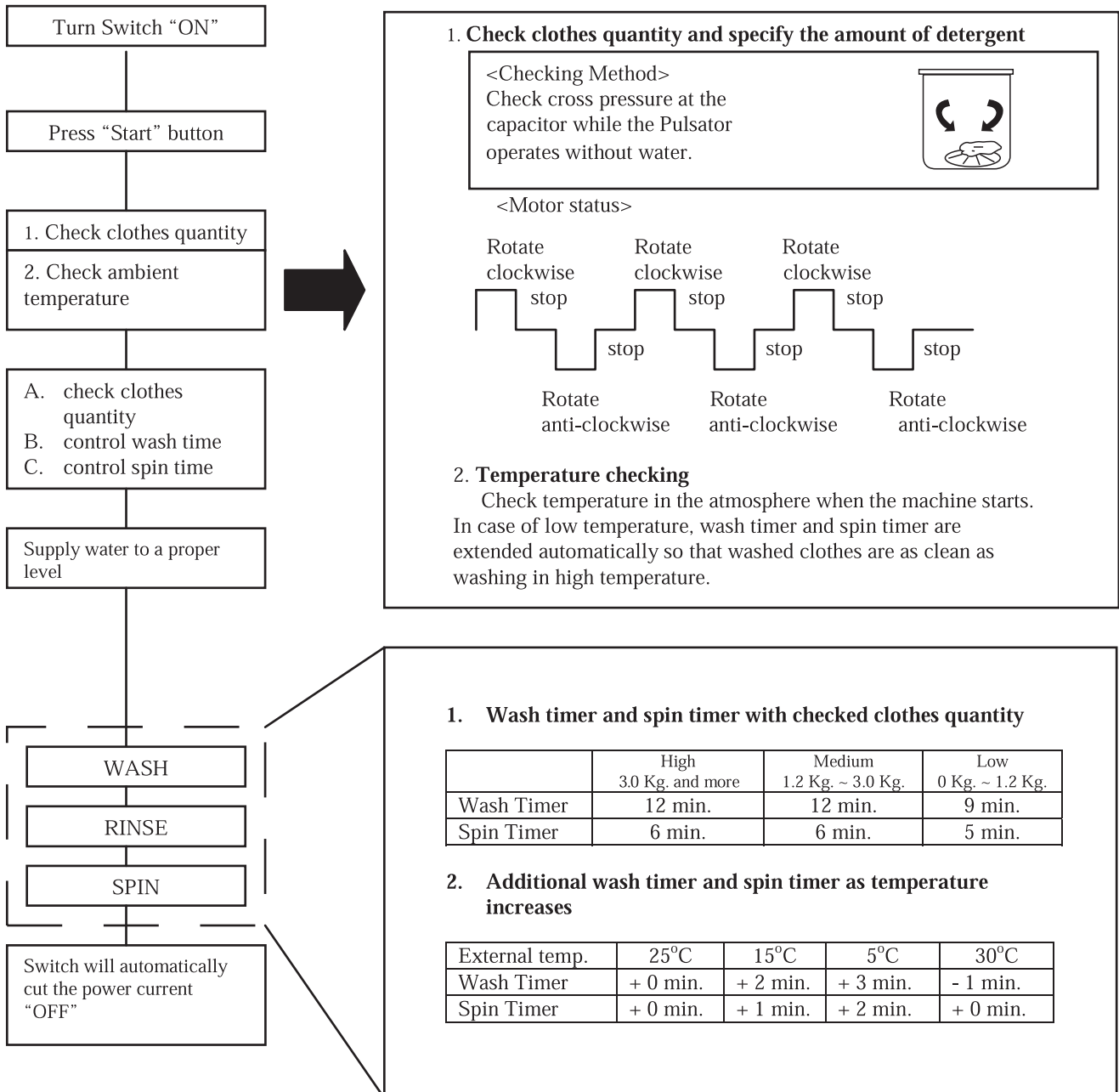
The weight is sensed by the moving force of the Pulsator, which changes a capacitor pole and releases a signal wave. The wave is changed into a pulse number from which the clothes weight is sensed. Prior to weight sensing for Normal and Strong program, the machine runs without water by spinning the Pulsator to left and right for 4.2 seconds (NO 0.3 second - OFF 0.4 second). The motor stops (OFF), a water system counts the pulse number, then calculates the accumulated pulse numbers for drawing water into the tub over a defined level. The dial will indicate High wash level.



2. Features and Technical Information

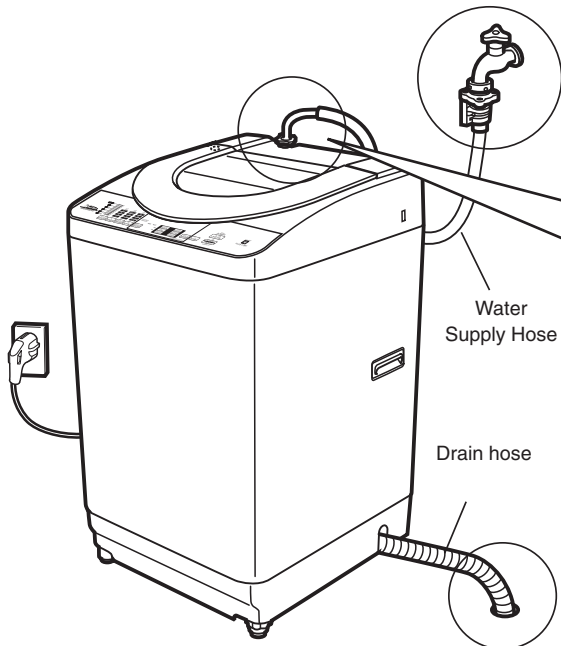
Function Control with Fuzzy sensor

Clothes quantity checking, wash level indication and detergent consumption indication with Fussy Logic system

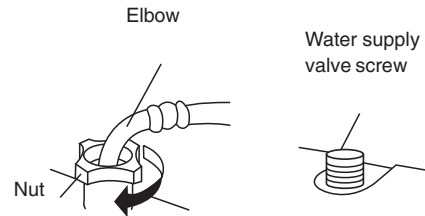


3. Installation

3.1 Checking of Placement



Connect the water supply hose to the water supply valve screw.



1. Push the water supply hose nut straight onto the water supply valve screw.
2. Hold the elbow by lifting it up, screw the nut onto the water supply valve screw, and firmly tighten the nut.
3. After the nut is tightened, check whether or not the elbow is unsteady or loose.
4. After tightening, open the faucet to confirm that there is no water leakage.

[Cautions]

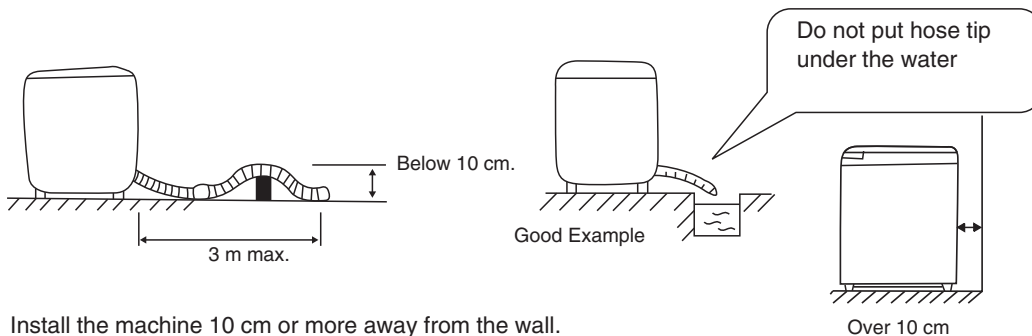
Firmly tighten the nut, otherwise water leakage will result.

Water Pressure Rating :

$2.9 \times 10^4 \sim 9.8 \times 10^5 \text{ Pa}$

Hose extension

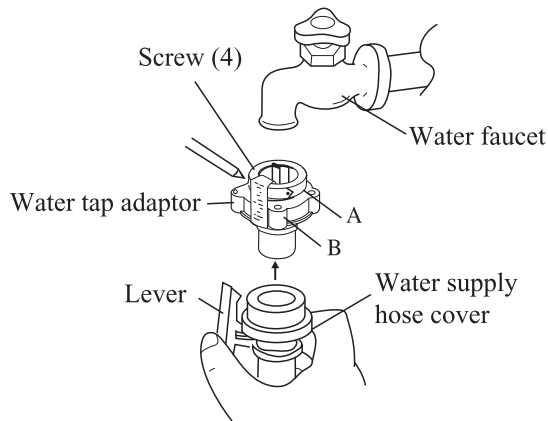
If extended external part is necessary when connecting the drain hose, the length of the drain hose should be less than 3 m and the height should be below 10 cm.



Install the machine 10 cm or more away from the wall.

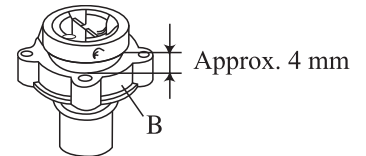
3. Installation

3.2 Connect the water supply hose



[Note]

- Firmly tighten part B of the water tap adaptor, otherwise water leakage will result.
- When the hose must be reinstalled (after you remove, for example), turn B to the left until about 4 mm of the thread becomes visible, then carry out the procedure described above.

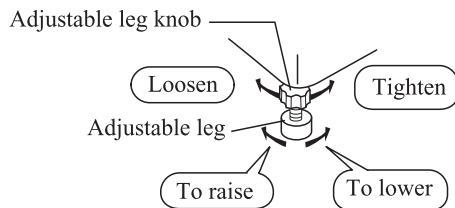


- If a water tap adaptor is already connected, replace with the attached new one.

3.3 Install Washing Machine to steady

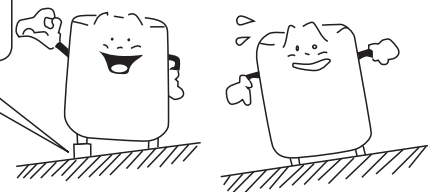
Adjust Hight of leg

1. Turn the adjustable leg knob towards (Loosen) direction to loose it.
2. Turn the adjustable leg to adjust the levelness.
 - 2.1 When increasing height, turn adjustable leg towards (Loosen) direction.
 - 2.2 When decreasing height, turn adjustable leg towards (Tighten) direction.
3. Turn the adjustable leg knob towards (Tighten) direction to tighten it.

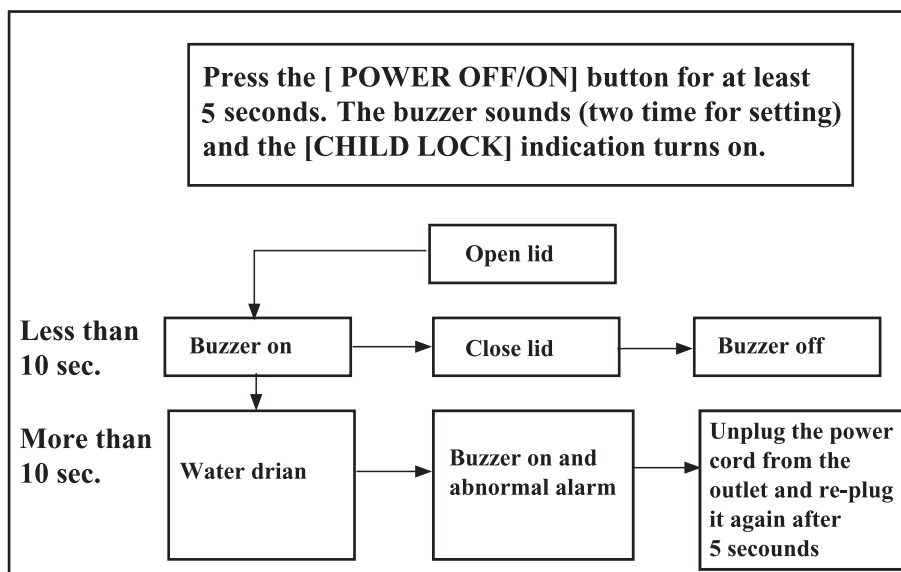


If the floor is largely inclined

Use board or a like for prop up under leg of washing machine



3.4 CHILD LOCK Program



Operations Panel



Fuzzy logic control is used to recommend the proper water level and amount of detergent for the amount of laundry being done.

RESERVE

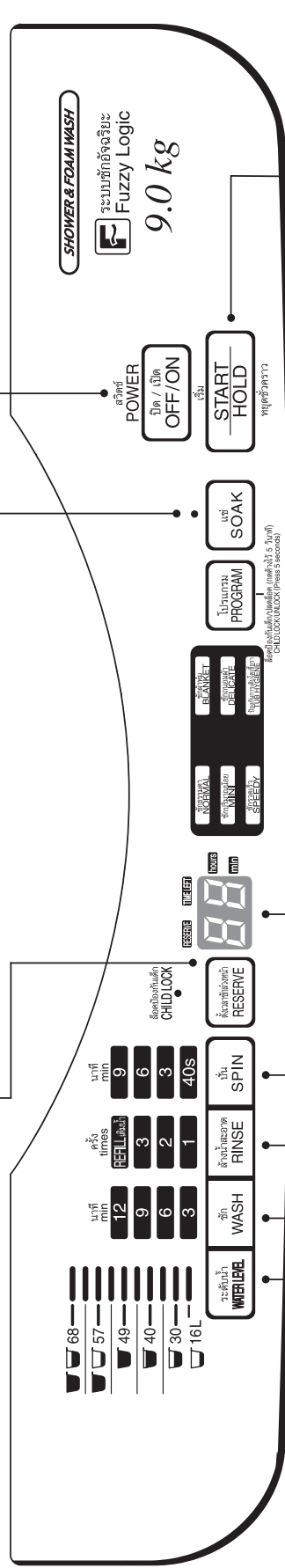
- Press the [RESERVE] button to set how many hours later you would like the wash to be completed. See page 24 to 25 for details.

SOAK

- Operations course for heavily washed laundry.
- You can adjust soak time based on the condition of dirt.
- You can choose your soak time from 1, 3, 5, 8 hours.

OFF/ON

- The power automatically turns off when total operations is finished.
- The power automatically turns off if [START/HOLD] button is not pressed within 10 minutes after turning on the power.



WATER LEVEL (Water volume display)

- The appropriate WATER LEVEL for the size and type of your laundry will be displayed.
- You can adjust the WATER LEVEL according to your desired level.
- The water level varies for models NA-F80X5.

RINSE

- Press this button, and the pre-set laundry cycle display will turn off allowing you to choose your own laundry setting.
- At "REFILL" selection, water will be supplied while "RINSE" process is in operation.

WASH, SPIN

- Press this button, and the pre-set laundry cycle display will turn off allowing you to choose your own laundry setting.

Time display

- When the machine is in operation, the time display shows how much time (in minutes) is left.
- When the programmable timer has been set, this display shows how much time is left until the wash is finished by pressing the [RESERVE] button.
- Timer indication on the panel will show longer time than selected time as it includes water feeding, draining, etc.

START/HOLD

- Press this to start.
- Press this to stop in the middle of the cycle.

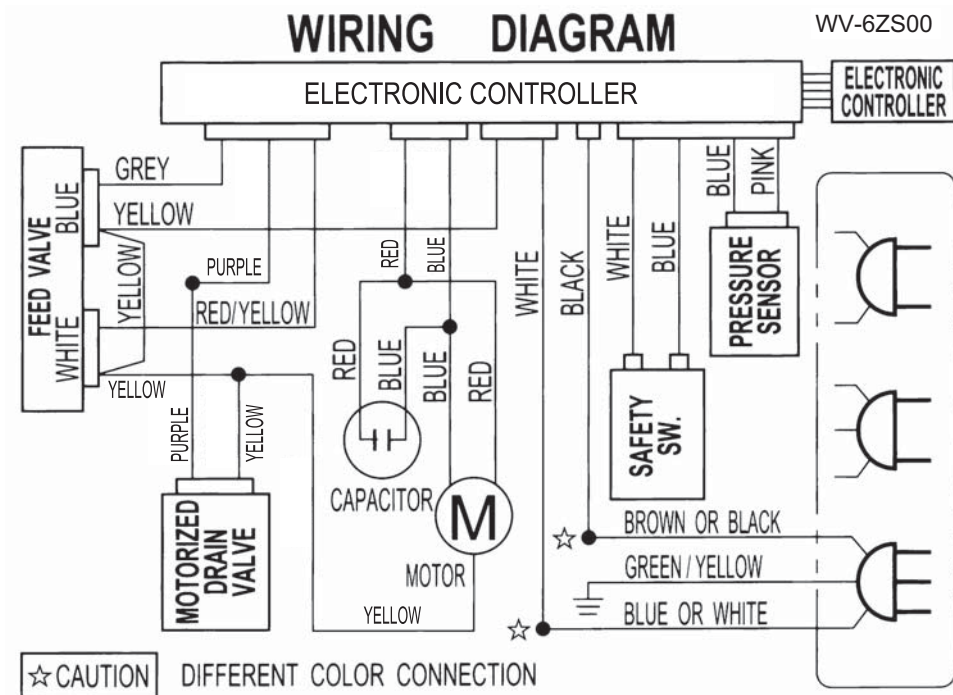
PROGRAM (Course Select)

- According to type of laundry and stain, you can select suitable course yourself.

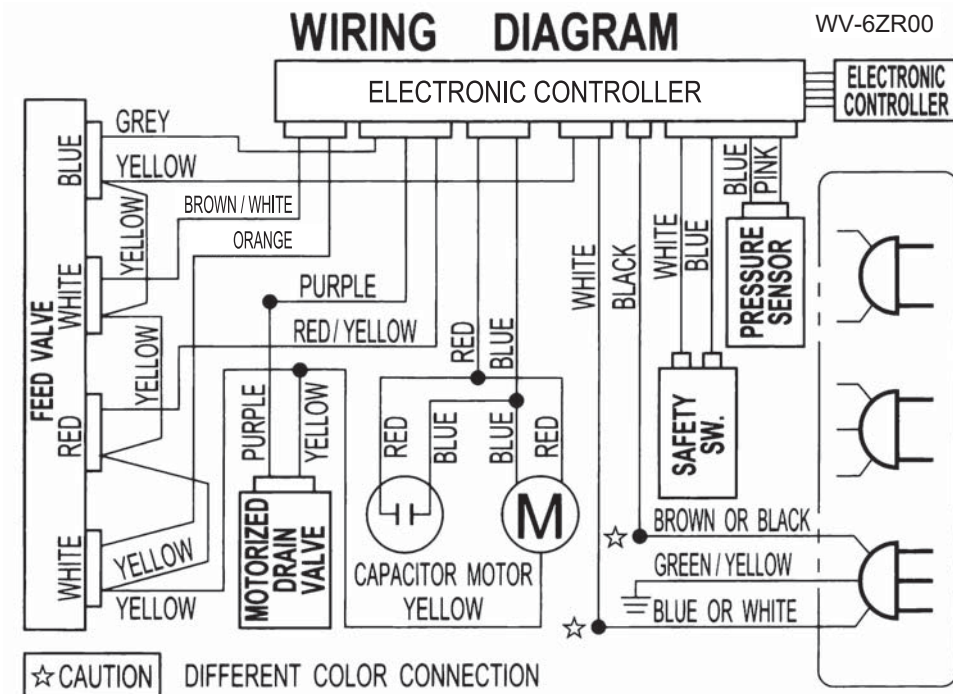
Caution: If you need to change the [PROGRAM] and [SOAK] settings after the cycle has already started, turn the power off and on it back.

5. WIRING DIAGRAM

5.1 MODEL NA-F80G5 / NA-F90G5



5.2 MODEL NA-F80X5 / NA-F90X5



6. TABLE OF ERRORS

Error Indication

If the following indications appear on the display panel (buzzer sounds, U and H Characters appear).

U11	<ul style="list-style-type: none">• Check if abnormalities listed below are seen in the external water hose.• Is the hose connected?• Is it clogged with lint?• Is it crushed?• Is the tip soaked in water?• Is a part of hose at a height of over 10 cm midway?• Is the extension hose longer than 3 m?• Is the hose being used too small?	Restart with opening and closing the lid.
U12	<ul style="list-style-type: none">• Check if the lid is opened.• Close the lid.	
U13	<ul style="list-style-type: none">• Is the washing machine is an unsteady position, or is it on an inclined floor surface?• Is the laundry unevenly distributed in the tub?• Arrange the laundry evenly in the tub, then close the lid.	
U14	<ul style="list-style-type: none">• Check if you have forgotten to connect the water hose and to turn on the faucet.• Is the water supply cut off?	Restart with opening and closing the lid.
U99	<ul style="list-style-type: none">• Check if lid is open when draining operation of the [CHILD LOCK] program is ON.	
H01	<ul style="list-style-type: none">• In case of H displays such as "H01", with no buzzer sounds pull out the power plug, and contact your dealer for service.	

7. TROUBLESHOOTING

7.1 Table of Troubleshooting

Problem (have to check)		Corresponding device									Others
		Control panel	Water Inlet Valve	Water level sensor	Safety switch	Gear motor	Capacitor	Mechanism case	Holding spring	Packing valve	
Machine doesn't work	No light at the dial	0									
	Dial light is on	0	0								
Unusual amount of water inside machine	No sound of water from inlet valve	0	0								
	There is sound of water from inlet valve										Check water supply
	Not enough water flow										Check water supply
	Water never stops flowing in	0	0	0							
Washing system doesn't work	Pulsator does not spin (no sound of motor)	0									Motor
	Pulsator does not spin (there is sound of motor)						0	0			Belt, Motor
	Pulsator spins only one way	0						0			Pulley, Motor
	Pulsator spins slowly	0									Belt, Motor
Unusual draining	No draining	0									
	Drains slowly	0				0				0	
Unusual spinning system	No spinning (no sound of motor)									0	
	No spinning (Pulsator spins)	0			0						
	No force in spinning (tub spins slowly)							0			
Unusual loud noise	Loud noise during washing										Belt, Motor
	Loud noise during dry spinning							0			Check installation
Water leak	Water leaks from drain pipe							0	0		Something clogged
	Water leaks at the bottom of machine										Drain pipe A, Pulsator
Incorrect working	Water is supplied during spinning										Unbalanced tub, leaning
	Rinses more than 3 times				0				0		Unbalanced tub, leaning
	Pulsator spins despite no water				0						Air pipe clogged
	Cannot change function program	0	0								Description of usage
	Water does not flow out of a filter										Description of usage
	No overflow during water filling as rinsing										Description of usage
	Selected washing program cannot be memorized										Description of usage
	Fabric softener flows away too fast										Description of usage
	Pulsator spins in short range as washing and rinsing										Description of usage
	Works at low wash level then supplies water again										Description of usage

Troubleshooting

The following symptoms are not trouble.

Symptoms	Causes
Machine begins filling water in the middle of the wash.	<ul style="list-style-type: none">• When the laundry amount is large at the HIGH water level, the machine sometimes fills automatically. When level goes down, the machine fills automatically.
The water level is too high for the amount of laundry being washed.	<ul style="list-style-type: none">• When the laundry is already soaked with water before the wash is started, or if there is water in the tub before the wash is started, the water level will sometimes be higher.
The water level is too low for the amount of laundry being washed.	<ul style="list-style-type: none">• With light laundry made of synthetic or blended fabric, the water level will sometimes be lower.
Midway during spinning, the operation suddenly changes to rinsing.	<ul style="list-style-type: none">• When the laundry is unbalanced during spin, rinsing and automatic correction of unbalanced laundry will begin. Later spinning will return to normal condition.
Water does not flow through the lint filter. Double Cascade does not operate.	<ul style="list-style-type: none">• When the water level is set to very low, water sometimes will not flow through the lint filter. Double Cascade does not operate when these settings have been selected.
Softener spills out from softener drawer.	<ul style="list-style-type: none">• Keep the level of the softener indicated to prevent the softener from flowing immediately.• If you close the softener drawer forcefully, softener may spill out of the drawer.

The following symptoms are not trouble.

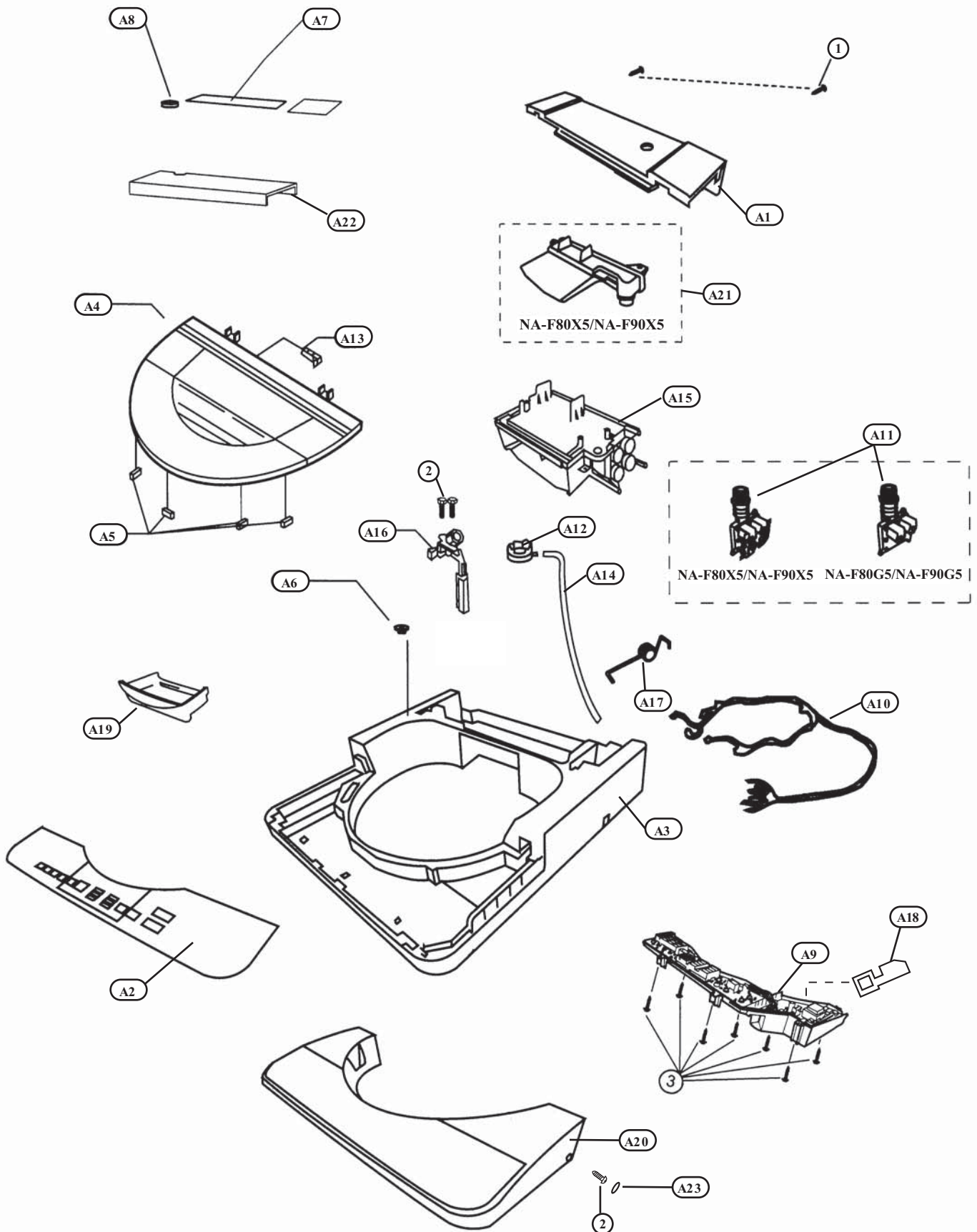
Symptoms	Causes
During draining, the laundry and the spinner rotates with irregular movements.	<ul style="list-style-type: none">• To suppress soap suds build-up, the washing tub turns slowly and quickly.
The buttons do not work.	<ul style="list-style-type: none">• Only the [WATER LEVEL] button is available after the machine begins washing.• To change the setting, press the [START/HOLD] button or press the [POWER OFF/ON] button and reconfigure the setting.
If you start with the rinse cycle, the tub is not filled with water.	<ul style="list-style-type: none">• When there is water in the tub, the operation starts with the draining. After spin cycle is finished, the tub will be filled with water.
Washing machine does not run at all.	<ul style="list-style-type: none">• Check if there is power failure.• Check if the power fuse has blown out or the breaker is actuated.• Check if the power plug is plugged in thoroughly.• Check if the “power switch” has been pressed.• Has the water faucet been turned on?• Check if the [START/HOLD] button has been pressed.• Has the machine been programmed under [RESERVE] timer?

The following symptoms are not trouble.

Symptoms	Causes
Water is not supplied.	<ul style="list-style-type: none">• Check if the water faucet is turned on.• Is the water supply cut off?• Check if the connection of the water supply hose is clogged with dirt.• Please refer to page 28 for cleaning water supply hose filter.• Check if the lid is opened. Close the lid.
Washing operation still continue even though the expected finishing time had passed on Reserve Program.	Washing time will be longer because of laundry unbalance, water feeding and draining condition.
Buzzer sounds followed by a draining when opening the lid during wash and rinse.	In the case when open the lid after setting the [CHILD LOCK] mode, it will force the draining process. Pull out power plug from the outlet and replug it after 5 seconds.
Tub shaking with the sound of water.	This is the sound of the liquid to maintain the balance during spinning.
Water supply failure.	Normally after the water supply failure, the water will become muddy. Detach the water feeding hose and turn on the water faucet to release to due muddy water. Fix water hose and start washing.

8. LOCATION OF PARTS AND REPLACEMENT PARTS

8.1 Location of Parts - A NA-F80G5/NA-F80X5 NA-F90G5/NA-F90X5



8. LOCATION OF PARTS AND REPLACEMENT PARTS

8.2 Replacement of Parts List - A

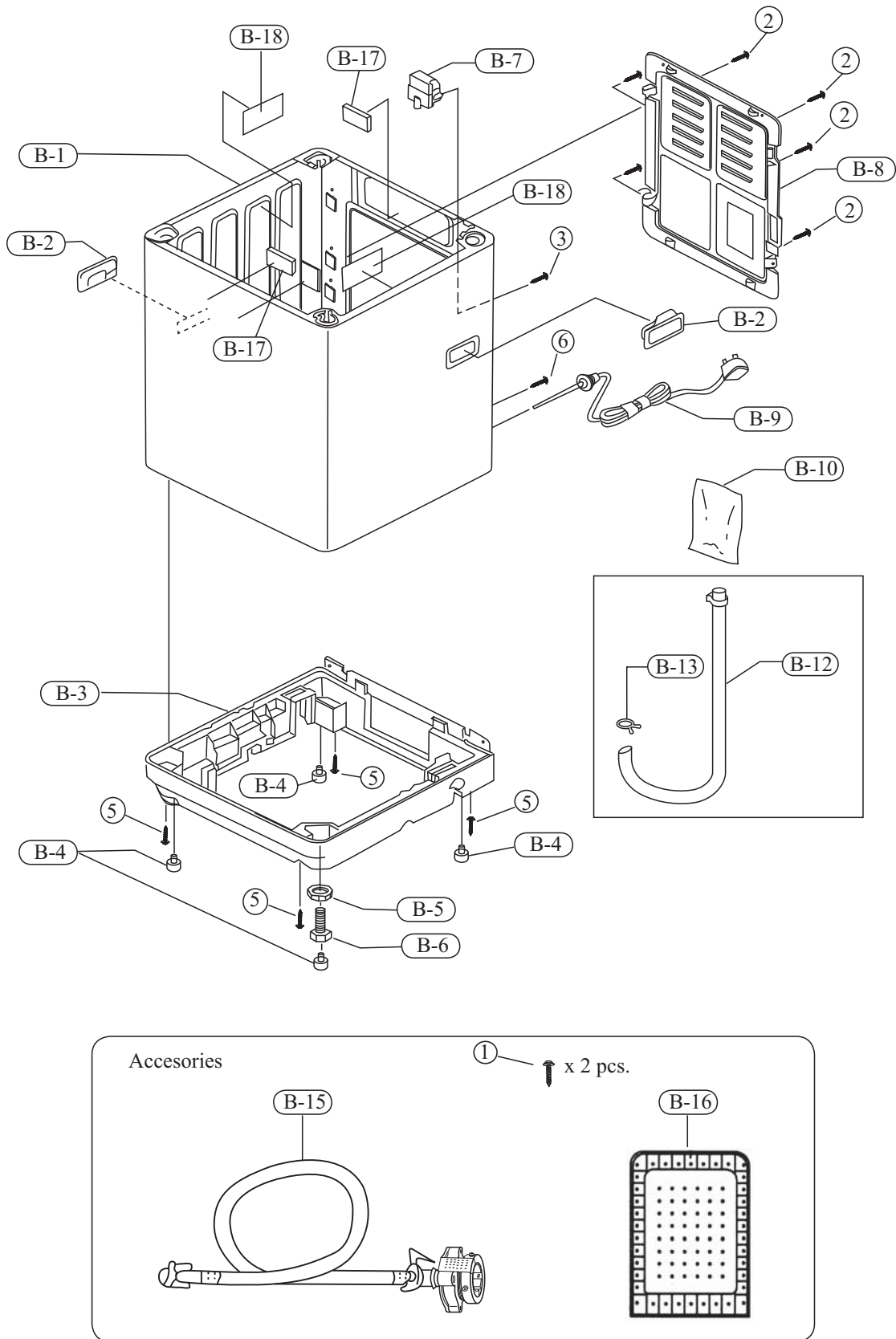
Ref	Part Name & Descriptic	Part Number	NA-F80G5		NA-F90G5		NA-F80X5		NA-F90X5
			Mal	Sin	Mal	Indo	Mal	Mal	Sin
			A1	Panel A	AXW01306XB0A	1	1	1	1
A2	Panel face B	AXW01466ZR5A						1	1
		AXW01466ZR5J			1	1			
		AXW01466ZT5A					1		
		AXW01466ZT5J	1	1					
A3	Body B	AXW01026XB0A					1	1	1
		AXW01026XB0J	1	1	1	1			
A4	LidUnit	AXW001G6ZR0A						1	1
		AXW001G6ZT0A					1		
		AXW001G6ZS0A			1	1			
		AXW001G6ZU0A	1	1					
A5	Lid Packnig	AXW01646UP00	1	1	1	1	1	1	1
A6	Leveller	AXW03536DKA0	1	1	1	1	1	1	1
A7	Spinner lid label	AXW11176ZR50						1	1
		AXW11176ZR5A	1	1	1	1	1		
A8	Feeding port packing	AXW02676UP00	1	1	1	1	1	1	1
A9	Controller Unit	AXW024C6ZR16						1	1
		AXW024C6ZS16			1	1			
		AXW024C6ZT16					1		
		AXW024C6ZU16	1	1					
A10	Connecter Lead wire unit	AXW014A6ZR00					1	1	1
		AXW014A6ZS00	1	1	1	1			
A11	Feed Valve	AXW292120806					1	1	1
		AXW292120906	1	1	1	1			
A12	Pressure sensor unit	AXW024T02800	1	1	1	1	1	1	1
		AXW024T03300	1	1	1	1	1	1	1
A13	Lid Hinge Shaft	AXW01936UP00	1	1	1	1	1	1	1
A14	Sub drain hose unit	AXW002Q6XB00	1	1	1	1	1	1	1
A15	Detergent case unit	AXW021B6XB00					1	1	1
		AXW021B6XC00	1		1	1			
A16	Safety switch	AXW166123400	1	1	1	1	1	1	1
		AXW166122910	1	1	1	1	1	1	1
A17	Lid hing spring	AXW11166XB00	1	1	1	1	1	1	1
A18	Insulation Spacer A	AXW04866ZR00	1	1	1	1	1	1	1
A19	Detergent case B	AXW21516XB0A					1	1	1
		AXW21516XC0J	1	1	1	1			
A20	Panel face A	AXW01456XB0J	1	1	1	1			
		AXW01456XB0A					1	1	1
A21	Nozzel unit	AXW008E6XB00					1	1	1
A22	Penel B	AXW01406XB0L			1	1			
		AXW01406XB0A						1	1
A22	Panel B	AXW01406XB0K					1		
A23	Wringer Port Frame Packnig	AXW01636XB0J	1	1	1	1			
		AXW01636XB0A					1	1	1

SCREWS

No	Part Name	Part Number	NA-F80G5		NA-F90G5		NA-F80X5		NA-F90X5
1	Special Tapping Screw	XTWAXW469J	1	1	1	1	1	1	1
2	Special Tapping Screw	XTB4+15CFJ	1	1	1	1	1	1	1
3	Special Tapping Screw	XTB4+12CFJ	1	1	1	1	1	1	1

8. LOCATION OF PARTS AND REPLACEMENT PARTS

8.3 Location of Parts List - B



8. LOCATION OF PARTS AND REPLACEMENT PARTS

8.4 Replacement of Parts List - B

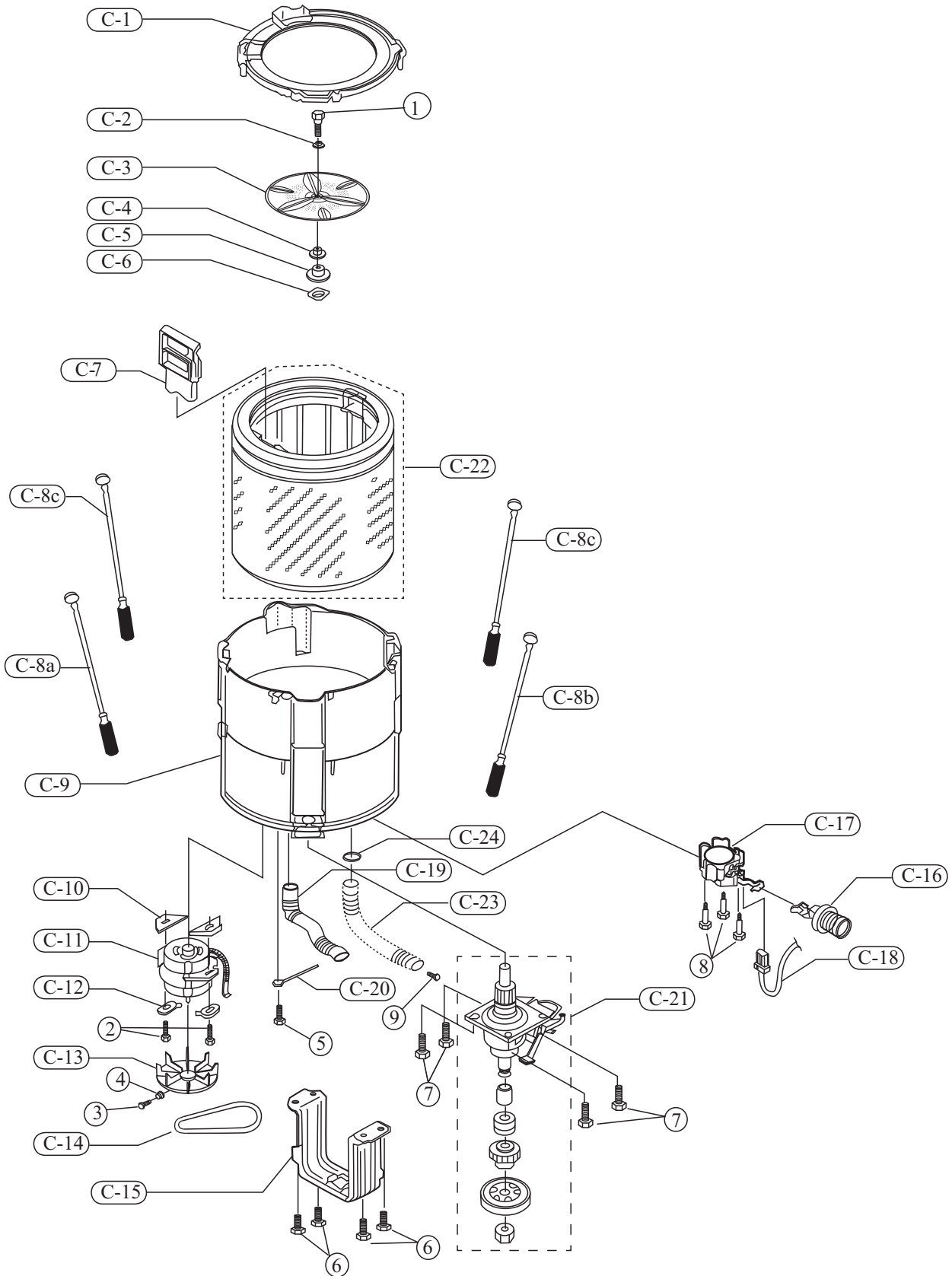
Ref										
	No.	Part Name & Descriptive	Part Number	NA-F80G5		NA-F90G5		NA-F80X5	NA-F90X5	
				Mal	Sin	Mal	Indo	Mal	Mal	Sin
B1	Body A Unit	AXW001A6XB0J	1	1	1					
B1	Body A Unit	AXW001AXB0A					1	1	1	
B1	Body A Unit	AXW001A6XD0J				1				
B2	Grip	AXW01106UP0J	1	1	1	1	1	1	1	1
B3	Base A	AXW03016XB00	1	1	1	1	1	1	1	1
B4	Leg Covering	AXW03396UP00	1	1	1	1	1	1	1	1
B5	Adjustable Leg Thumb	AXW03436ZV00	1	1	1	1	1	1	1	1
B6	Adjustable Leg	AXW03356UP00	1	1	1	1	1	1	1	1
B7	Capacitor	AXW04037P907	1	1	1	1	1	1	1	1
B8	Back Panle	AXW01566ZV00	1	1	1	1	1	1	1	1
B9	Power Cord Unit	AXW004A72914								
B9	Power Cord Unit	AXW004A77254	1		1		1	1		
B9	Power Cord Unit	AXW004A73014				1				
B9	Power Cord Unit	AXW004A83400	1	1	1	1	1	1	1	1
B9	Power Cord Unit	AXW004A78115	1	1	1		1	1	1	1
B10	Chemical Cover	AXW04486UP10	1	1	1	1	1	1	1	1
B12	Flexible Hose B Unit	AXW002E6XB00	1	1	1	1	1	1	1	1
B13	Hose B and	AXW02546XB00	1	1	1	1	1	1	1	1
B15	Service Pressure Hose Unit	AXW012C6ZY00	1	1	1	1	1	1	1	1
B16	Bottom Cover	AXW21586ZR00	1	1	1	1	1	1	1	1
B17	Body A Protection	AXW90466NTA0	1	1	1	1	1	1	1	1
B18	Body A Protection	AXW90466AA5M	1	1	1	1	1	1	1	1

SCREWS

No.	Part Name	Part Number	NA-F80G5		NA-F90G5		NA-F80X5	NA-F90X5	
1	Special Tapping Screw	XTTAXW444J	1	1	1	1	1	1	1
2	Special Tapping Screw	XTTAXW444J	1	1	1	1	1	1	1
3	Special Tapping Screw	XYNAXW438J	1	1	1	1	1	1	1
4	Special Tapping Screw	XTTAXW444J	1	1	1	1	1	1	1
5	Pan Head Screw	XSN5+10BNS	1	1	1	1	1	1	1

8. LOCATION OF PARTS AND REPLACEMENT PARTS

8.5 Location of Parts List - C



8. LOCATION OF PARTS AND REPLACEMENT PARTS

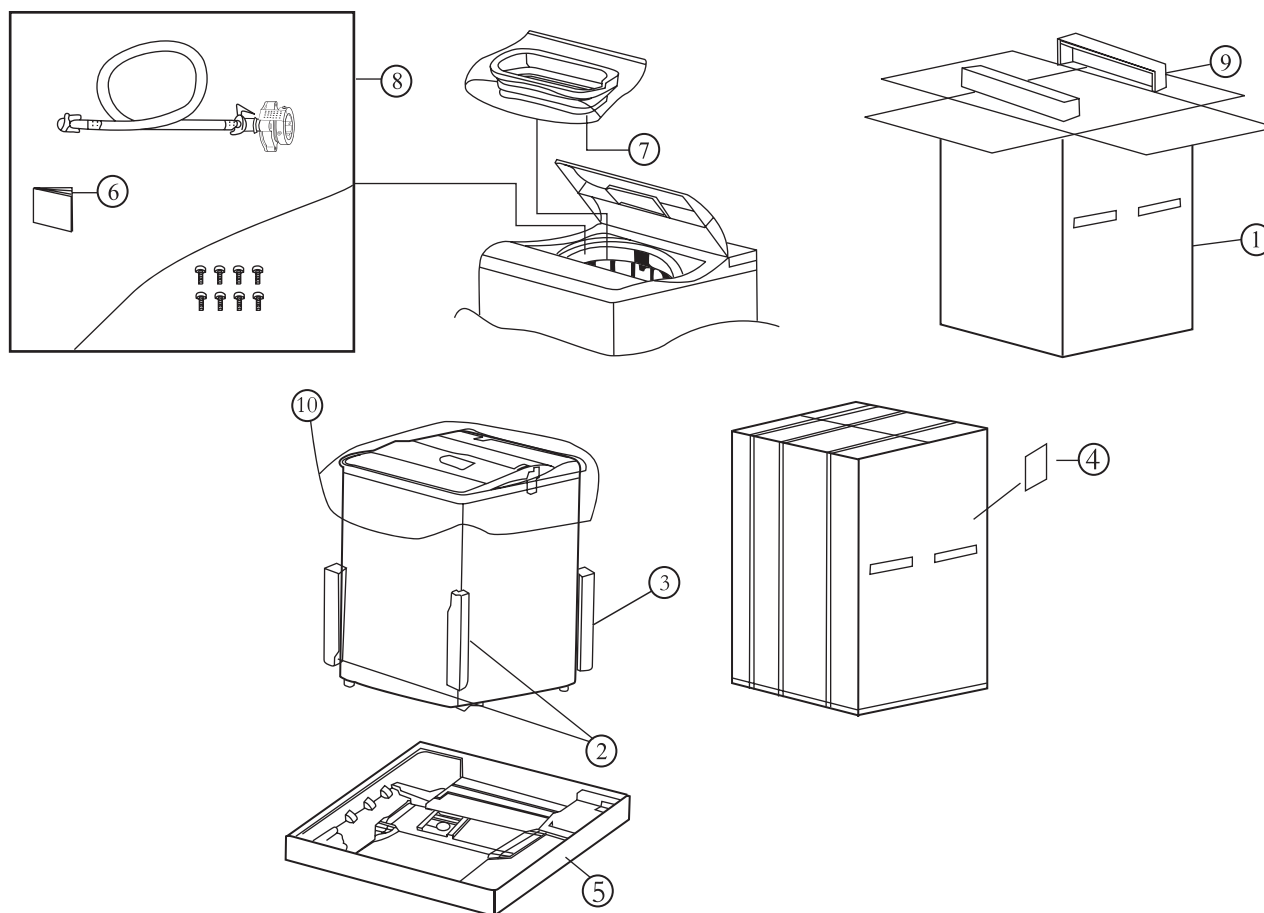
8.6 Replacement of Parts List - C

Ref	Part Name & Descriptive	Part Number	NA-F80G5		NA-F90G5		NA-F80X5		NA-F90X5
			Mal	Sin	Mal	Indo	Mal	Mal	Sin
			C1	Outer Tub Cover	AXW32246CH10	1	1	1	1
C2	O-ring	AXW02576BM00	1	1	1	1	1	1	1
C3	Pulsator Unit	AXW005E6ZR0P							
C4	Shaft Bushing	AXW05046ZR00	1	1	1	1	1	1	1
C5	Spinner Shaft Flange Nut	AXW15176RU00	1	1	1	1	1	1	1
C6	Spinner Flange Washer B	AXW151980200	1	1	1	1	1	1	1
C7	Filter Unit	AXW022A6RU00	1	1	1	1	1	1	1
C8a	Suspension Unit (F-R)	AXW034U6ZR50	1	1	1	1	1	1	1
C8b	Suspension Unit (F-L)	AXW034U6ZRA0	1	1	1	1	1	1	1
C8c	Suspension Unit (R-R/L)	AXW034U6ZR00	1	1	1	1	1	1	1
C9	Outer Tub Cover	AXW12016CG10	1	1	1	1	1	1	1
C10	Motor Washer A	AXW04206JZ00	1	1	1	1	1	1	1
C11	Motor	AXW040157616	1	1	1	1	1	1	1
C12	Motor Washer B	AXW04216JZ00	1	1	1	1	1	1	1
C13	Motor Pulley	AXW04116XB00	1	1	1	1	1	1	1
C14	V-Belt	AXW041219850	1	1	1	1	1	1	1
C15	Spinner Plate B	AXW32325TP10	1	1	1	1	1	1	1
C16	Valve Frame Unit	AXW009D6XB00	1	1	1	1	1	1	1
C17	Gear Motor	AXW348201006	1	1	1	1	1	1	1
C17	Gear Motor	AXW348202516	1	1	1	1	1	1	1
C18	Lead Wire Unit	AXW014B6UP00	1	1	1	1	1	1	1
C19	Over Flow Hose B	AXW02345TW0M	1	1	1	1	1	1	1
C20	Earth Unit	AXW003F6UP00							
C21	Mechanism Case Unit	AXW020A6UA40	1	1	1	1	1	1	1
C22	Tub Unit	AXW002A6ZR00	1	1	1	1	1	1	1
C23	Flexible Hose A Unit	AXW002D6EM00	1	1	1	1	1	1	1
C24	Hose Band	AXW02456UP00	1	1	1	1	1	1	1

SCREWS

No.	Part Name	Part Number	NA-F80G5		NA-F90G5		NA-F80X5		NA-F90X5
1	Special Screw	XSSAXW679							
2	Special Bolt	XVGAXW839J	1	1	1	1	1	1	1
3	Special Bolt	XVGAXW703J	1	1	1	1	1	1	1
4	Special Bolt	XNGAXW701J	1	1	1	1	1	1	1
5	Special Bolt	XVGAXW411J	1	1	1	1	1	1	1
6	Special Bolt	XTWAXW6517J	1	1	1	1	1	1	1
7	Special Bolt	XVGAXW812J	1	1	1	1	1	1	1
8	Special Tapping Screw	XTWAXW6518J	1	1	1	1	1	1	1
9	Special Tapping Screw	XTWAXW471	1	1	1	1	1	1	1

8.7 Location of Packing Part



8.8 Replacement of Packing Part List

No.	Part Name & Descriptive	Part Number	NA-F80G5		NA-F90G5		NA-F80X5	NA-F90X5	
			Mal	Sin	Mal	Indo	Mal	Mal	Sin
1	Protection case A	AXW90016ZU50	1						
		AXW90016ZT50					1		
		AXW90016ZS50			1				
		AXW90016ZR50						1	
		AXW90016ZRA0							1
		AXW90016ZUA0		1					
2	Corner Cushion	AXW90156XB00	2	2	2	2	2	2	2
3	Corner Cushion	AXW90156UP10	1	1	1	1	1	1	1
4	Stock Card	AXW99186UP00	1	1	1	1	1	1	1
5	Protection case B Unit	AXW090B6XB00	1	1	1	1	1	1	1
6	Operation Instruction	AXW99016ZR50					1	1	1
		AXW99016ZS50	1	1	1				
		AXW99016ZS00			1				
		AXW99016ZR00			1				
		AXW99016ZSA0				1			
7	Spin Tub Supporter	AXW90856XB00	1	1	1	1	1	1	1
8	Accessories Bag	AXW90576UP00	1	1	1	1	1	1	1
9	Body Cover	AXW90046XB00	1	1	1	1	1	1	1
10	Polyethylene Cover	AXW90606XB00	1	1	1	1	1	1	1