

Service Manual

Fully Automatic Washing machine

NA-F80A6

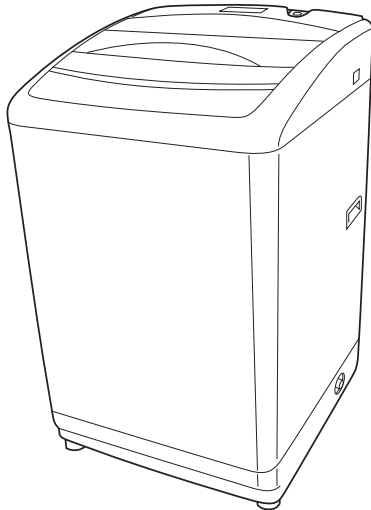
NA-F80G6

NA-F80X6

NA-F90G6

NA-F90X6

Export



⚠ WARNING

This service information is designed for experienced repair technicians only and is not designed for use by the general public. It does not contain warnings or cautions to advise non-technical individuals of potential dangers in attempting to service a product. Products powered by electricity should be serviced or repaired only by experienced professional technicians. Any attempt to service or repair the product or products dealt with in this service information by anyone else could result in serious injury or death.

IMPORTANT SAFETY NOTICE

There are special components used in this equipment which are important for safety. These parts are marked by ⚠ in the Schematic Diagrams, Circuit Board Diagrams, Exploded Views and Replacement Parts List. It is essential that these critical parts should be replaced with manufacturer's specified parts to prevent shock, fire or other hazards. Do not modify the original design without permission of manufacturer.

Specification

Model		NA-F80A6	NA-F80G6	NA-F80X6	NA-F90G6	NA-F90X6
Rate voltage and Frequency	220V/50Hz	Thailand	Thailand	Thailand	Thailand, Iran, Indonesia	Thailand
	230V/50Hz	Singapore	Singapore	-	-	Singapore
	240V/50Hz	Malaysia	Malaysia	Malaysia	Malaysia, MID EAST (UAE, Oman, Kuwait, Qatar)	Malaysia
Rate Power Consumption	220V/50Hz	400	430	430	450	470
	230V/50Hz	400	440	440	460	460
	240V/50Hz	430	450	450	470	470
Standard Water Consumption	172 Liter				177 Liter	
Standard Capacity	8 Kg				9 Kg	
Water Supply Pressure	0.03 to 1 Mpa (0.3 to 10 Kgf/cm ²)					
Outer Dimension	643 mm × 637 mm × 1100 mm					
Weight	41 Kg					

© 2007 Panasonic Home Appliances (Thailand) Co.,Ltd
All rights reserved. Unauthorized copying and distribution is a violation of law

CONTENTS

	Page
1. SPECIFICATIONS	3
2. FEATURES AND TECHNICAL INFORMATION	4-5
3. INSTALLATION	6-7
4. OPERATIONS PANEL	8-9
5. WIRING DIAGRAM	10
6. TABLE OF ERRORS	11
7. TROUBLESHOOTING	12-14
8. LOCATION OF PARTS AND REPLACEMENT PARTS	15-28

Usage: For repairs and change of spare part only for washing machine type
Panasonic Model **NA-F80A6/NA-F80G6/NA-F80X6/NA-F90G6/NA-F90X6**

Instruction
for Usage: The work repair and changing of space part should be operated by a skilled
technician from the distribution agents, or Panasonic's standard service center.

Warning: Switch off electrical power before commencing work to avoid a potential short
circuit or injury.

1. SPECIFICATIONS

Model	NA-F80A6	NA-F80G6	NA-F80X6	NA-F90G6	NA-F90X6
Voltage (AC)	220 V/50 Hz: Thailand, Iran, Indonesia				
	230 V/50 Hz: Singapore				
	240 V/50 Hz: Malaysia, MID EAST (UAE, Oman, Kuwait, Qatar)				
External Dimension	Width: 643 mm / Depth: 637 mm / Height: 1042 mm				
Water consumption (Normal Program)	172 liter			177 liter	
Water Pressure	0.3-10 Kg.f/cm ² (8-25 liter/min)				
Pulsator (r.p.m)	110 r/min				
Spin Tub (r.p.m)	740 r/min				
Machine Weight	41 Kg				
Colour	Grey		Silver	Grey	Silver
Motor Power	Input: 320 Watts / Output: 180 Watts				
Safety Switch	Checking unbalance / tub lid				
Alarm	Rings when finishing washing or unusual				
Thermoprotector	Motor				
Water Inlet Hole	Yes				
Fabric softener Dispenser	Yes				
Bleach dispenser	No			Yes	
Filter	Yes				
Automatic Power-cut switch	Yes				
Accessories	Inlet pipe (1.2 m), Tab joint, Drain pipe (80 cm), Rat prevention screen				

Sandard Water Consumption Model NA-F80A6 / NA-F80G6 / NA-F80X6

Wash Level	Water	Clothes Weight	
High	74 liters	8.0 Kg	66 liters
<High Lower>	69 liters	6.0 Kg	62 liters
Medium	62 liters	5.0 Kg	57 liters
<Medium Lower>	58 liters	4.2 Kg	53 liters
Low 1	52 liters	3.5 Kg	49 liters
<Lower 1 Lower>	48 liters	2.5 Kg	45 liters
Low 2	42 liters	1.5 Kg	40 liters
<Lower 2 Lower>	38 liters	1.1 Kg	35 liters
Low 3	32 liters	0.8 Kg	30 liters
<Lower 3 Lever>	16 liters	0.3 Kg	16 liters

Sandard Water Consumption Model NA-F90G6 / NA-F90X6

Wash Level	Water	Clothes Weight	
High	74 liters	9.0 Kg	68 liters
<High Lower>	69 liters	6.0 Kg	62 liters
Medium	62 liters	5.0 Kg	57 liters
<Medium Lower>	58 liters	4.2 Kg	53 liters
Low 1	52 liters	3.5 Kg	49 liters
<Lower 1 Lower>	48 liters	2.5 Kg	45 liters
Low 2	42 liters	1.5 Kg	40 liters
<Lower 2 Lower>	38 liters	1.1 Kg	35 liters
Low 3	32 liters	0.8 Kg	30 liters
<Lower 3 Lever>	16 liters	0.3 Kg	16 liters

2. FEATURES AND TECHNICAL INFORMATION

Model NA-F80A6 / NA-F80G6 / NA-F80X6 / NA-F90G6 / NA-F90X6

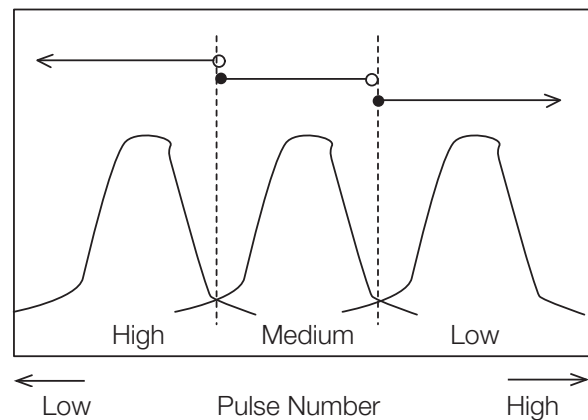
Program	Time
Normal	Approx. 47-69 min
Super White	Approx. 100 min
New Speedy ★	Approx. 21-27 min
Mini	Approx. 20 min
Blanket ★	Approx. 55 min
Delicate ★	Approx. 29-32 min
Tub Hygiene	Approx. 150 min
Soak 1 hour	Approx. 107 min
Soak 8 hour	Approx. 527 min

Product special features

- Dial indicating detergent level after sensing wash level
- Pre-set timer
- Fabric softener dispenser
- Detergent dispenser
- Automatic power-off when finish
- Dial indicating unusual sign (LED will blink)
- Alarm ON-OFF
- Overflow sensing device.
- Ag Shower (NA-F80X6 / NA-F90X6 only)
 - This has the disinfection effect with Ag+.
 - This can be used for the course marked with ★.

Weight Sensor

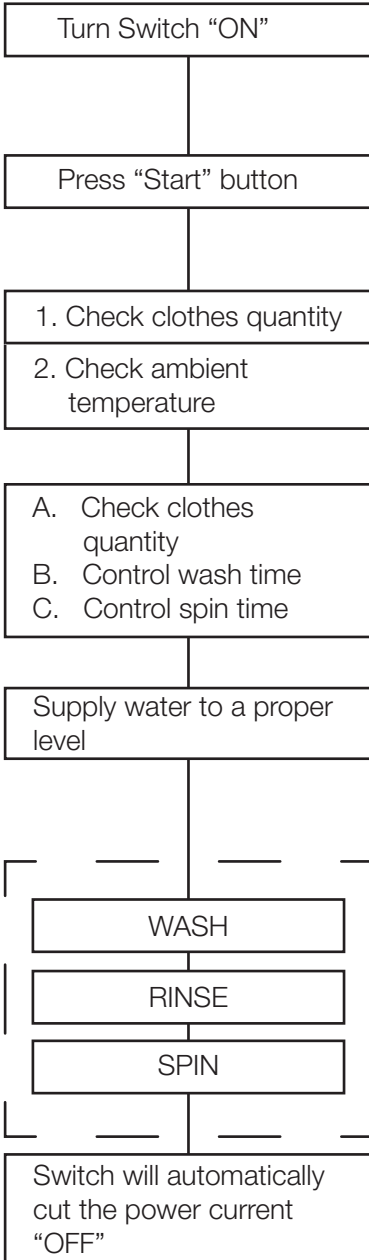
The weight is sensed by the moving force of the Pulsator, which changes a capacitor pole and releases a signal wave. The wave is changed into a pulse number from which the clothes weight is sensed. Prior to weight sensing for Normal and Strong program, the machine runs without water by spinning the Pulsator to left and right for 4.2 seconds (ON 0.3 second-OFF 0.4 second). The motor stops (OFF), a water system counts the pulse number, then calculates the accumulated pulse numbers for drawing water into the tub over a defined level. The dial will indicate High wash level.



2. FEATURES AND TECHNICAL INFORMATION


Function Control with Fuzzy sensor

Clothes quantity checking, wash level indication and detergent consumption indication with Fuzzy Logic System

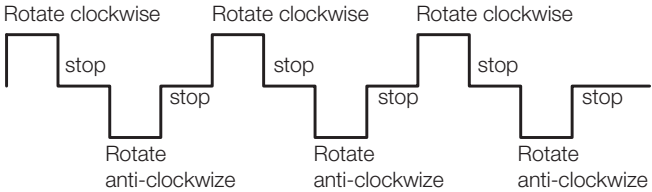


1. Check clothes quantity and specify the amount of detergent

<Checking Method>
Check cross pressure at the capacitor while the Pulsator operates without water.



<Motor status>



2. Temperature checking
Check temperature in the atmosphere when the machine starts. In case of low temperature, wash timer and spin timer are extended automatically so that washed clothes are as clean as washing in high temperature.

1. Wash timer and spin timer with checked clothes quantity

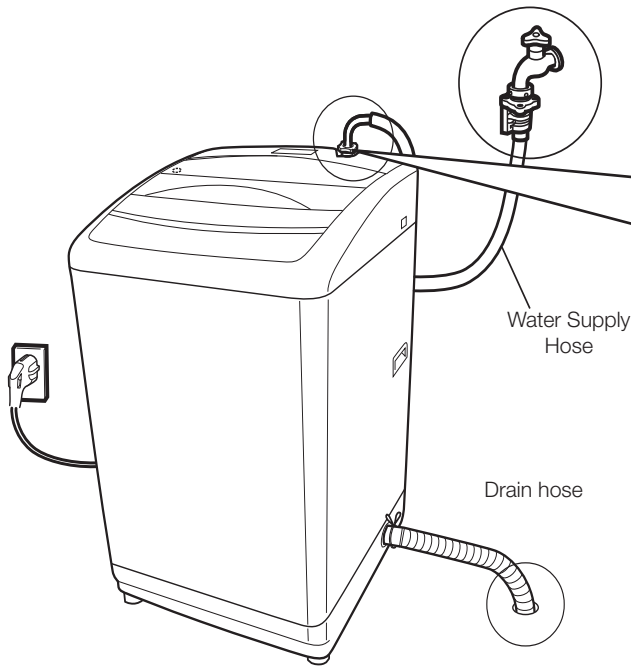
	High 3.0 Kg and more	Medium 1.2 Kg~3.0 Kg	Low 0 Kg~1.2 Kg
Wash Timer	12 min.	12 min.	9 min.
Spin Timer	6 min.	6 min.	5 min.

2. Additional wash timer and spin timer as temperature increases

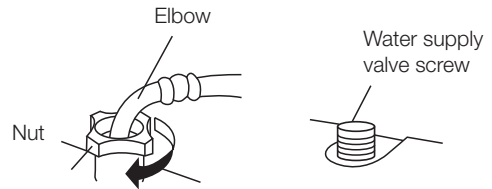
External temp.	25°C	15°C	5°C	30°C
Wash Timer	+0 min.	+2 min.	+3 min.	-1 min.
Spin Timer	+0 min.	+1 min.	+2 min.	+0 min.

3. INSTALLATION

3.1 Checking of Placement



Connect the water supply hose to the water supply valve screw.



1. Push the water supply hose nut straight onto the water supply valve screw.
2. Hold the elbow by lifting it up, screw the nut onto the water supply valve screw, and firmly tighten the nut.
3. After the nut is tightened, check whether or not the elbow is unsteady or loose.
4. After tightening, open the faucet to confirm that there is no water leakage.

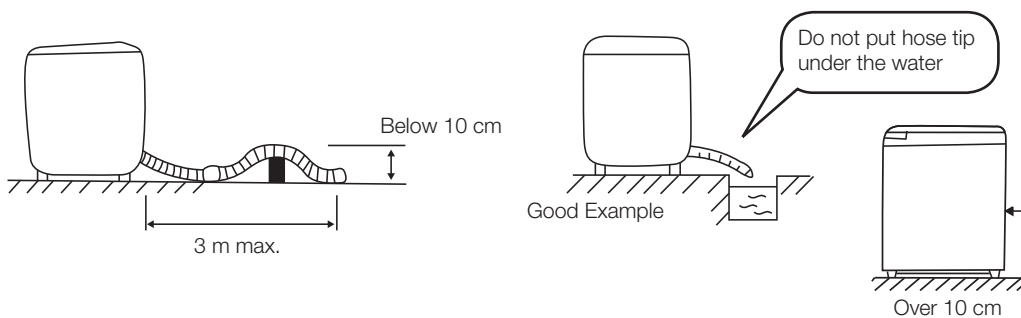
[Cautions]

Firmly tighten the nut, otherwise water leakage will result.

Water Pressure Rating :
 $2.9 \times 10^4 \sim 9.8 \times 10^5 \text{ Pa}$

Hose extension

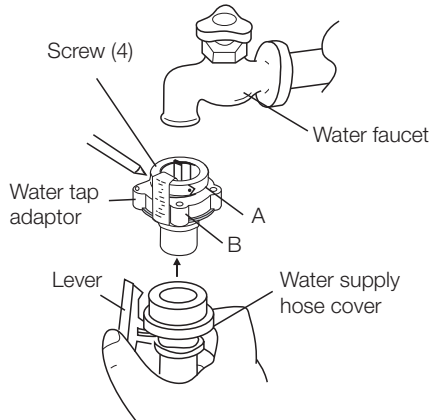
If extended external part is necessary when connecting the drain hose, the length of the drain hose should be less than 3 m and the height should be below 10 cm.



Install the machine 10 cm or more away from the wall.

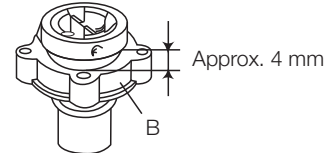
3. INSTALLATION

3.2 Connect the water supply hose



[Note]

- Firmly tighten part B of the water tap adaptor, otherwise water leakage will result.
- When the hose must be reinstalled (after you remove, for example), turn B to the left until about 4 mm of the thread becomes visible, then carry out the procedure described above.

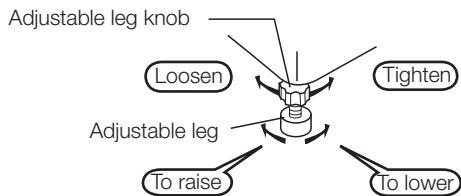


- If a water tap adaptor is already connected, replace with the attached new one.

3.3 Install Washing Machine to steady

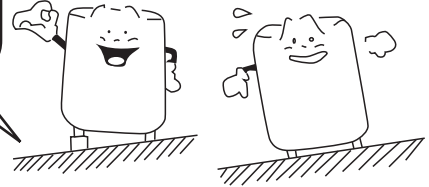
Adjust Height of leg

1. Turn the adjustable leg knob towards (Loosen) direction to loose it.
2. Turn the adjustable leg to adjust the levelness.
 - 2.1 When increasing height, turn adjustable leg towards (Loosen) direction.
 - 2.2 When decreasing height, turn adjustable leg towards (Tighten) direction.
3. Turn the adjustable leg knob towards (Tighten) direction to tighten it.



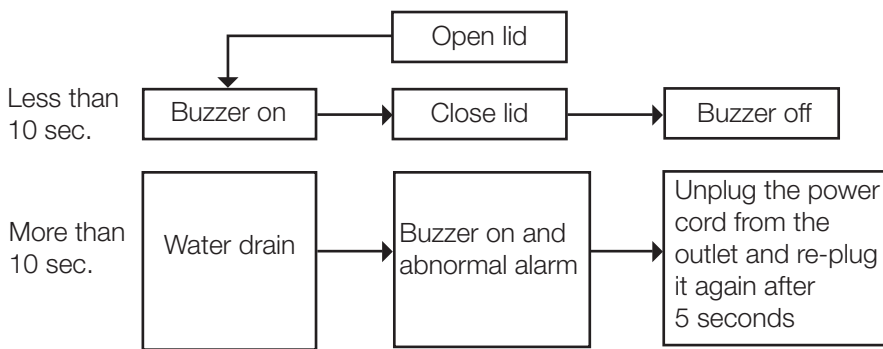
If the floor is largely inclined

Use board or a like for prop up under leg of washing machine



3.4 CHILD LOCK Program

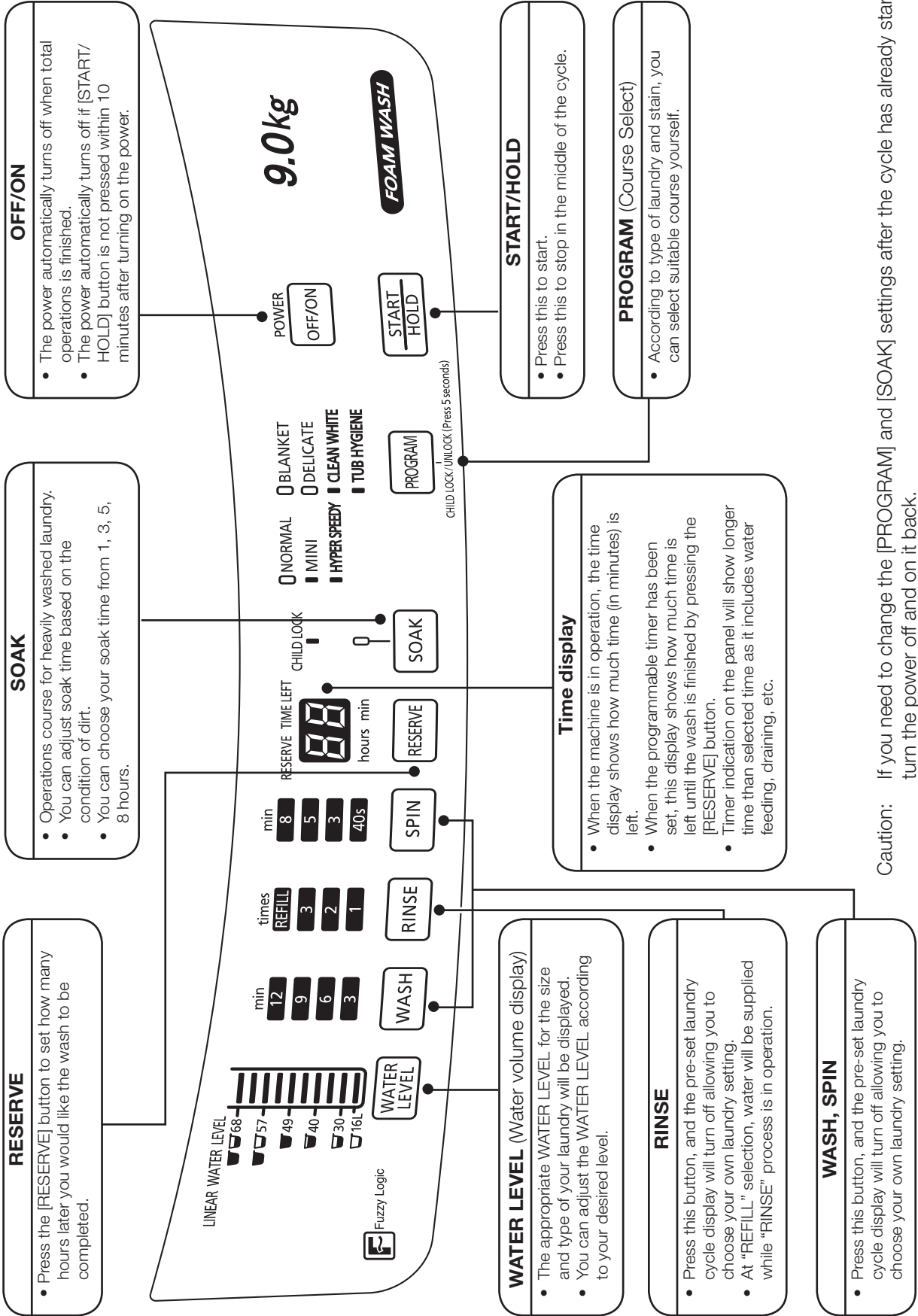
Press the [POWER OFF/ON] button for at least 5 seconds. The buzzer sounds (two time for setting) and the [CHILD LOCK] indication turns on.



Operations Panel



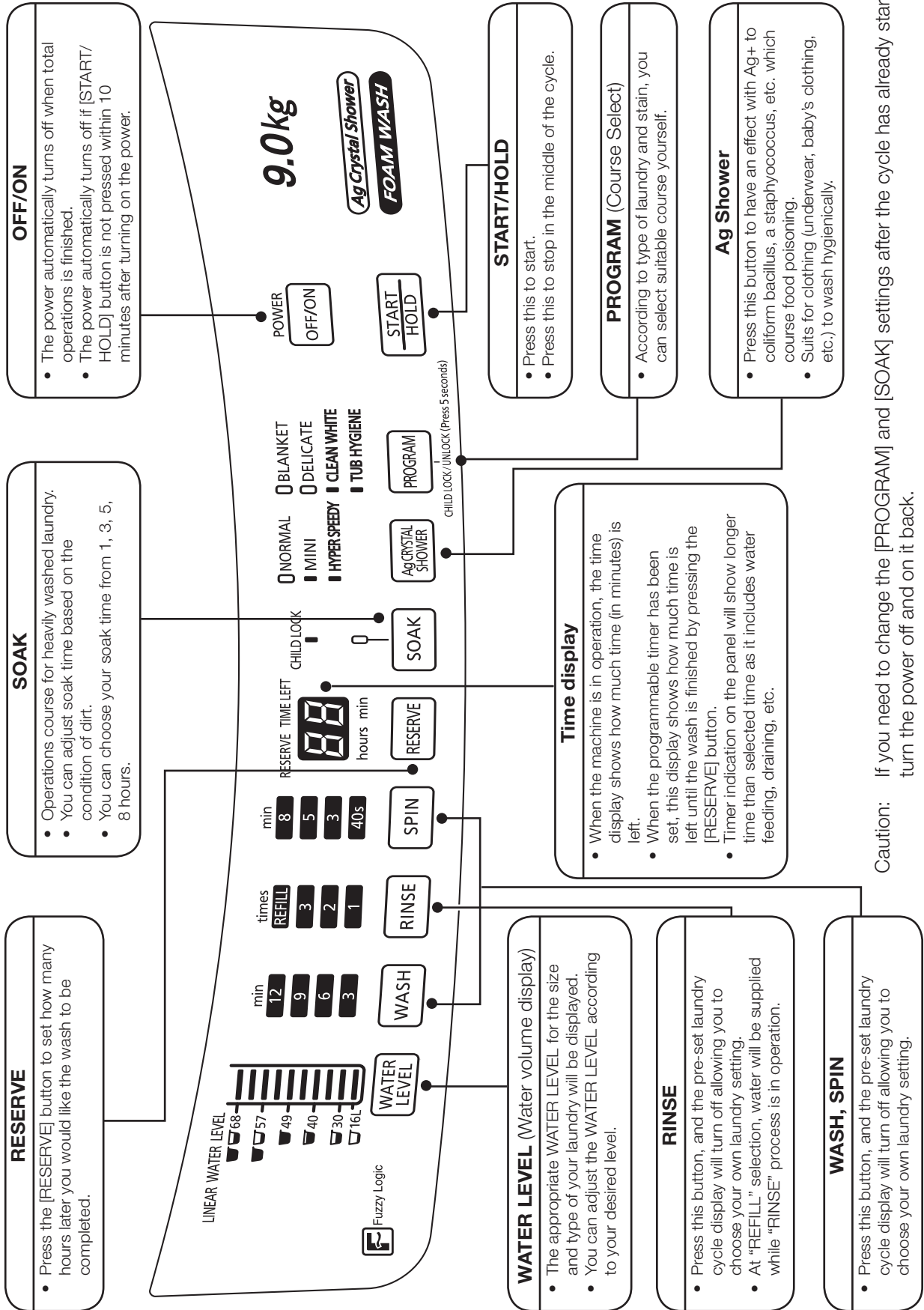
Fuzzy logic control is used to recommend the proper water level and amount of detergent for the amount of laundry being done.



4. OPERATIONS PANEL

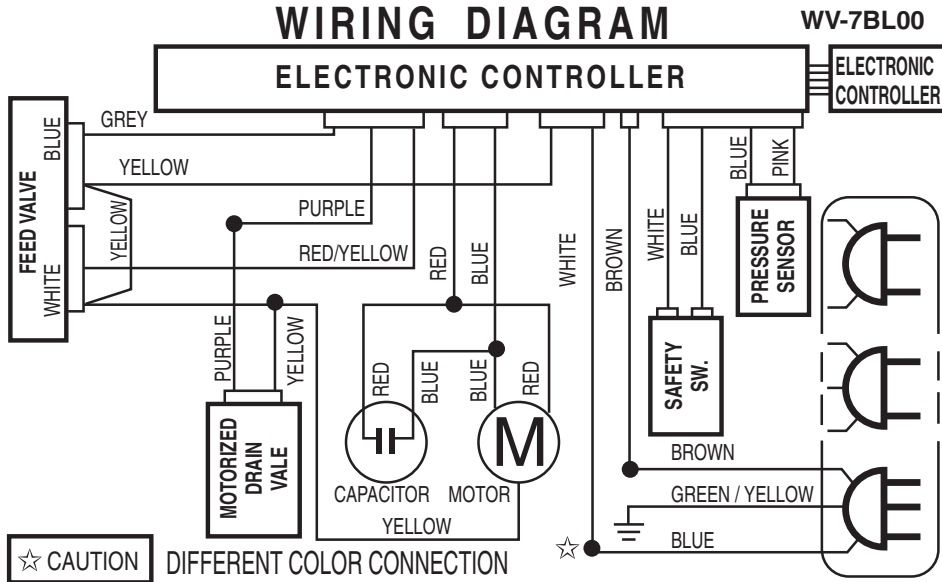
4.2 Model NA-F80X6 / NA-F90X6

Operations Panel
 Fuzzy logic control is used to recommend the proper water level and amount of detergent for the amount of laundry being done.

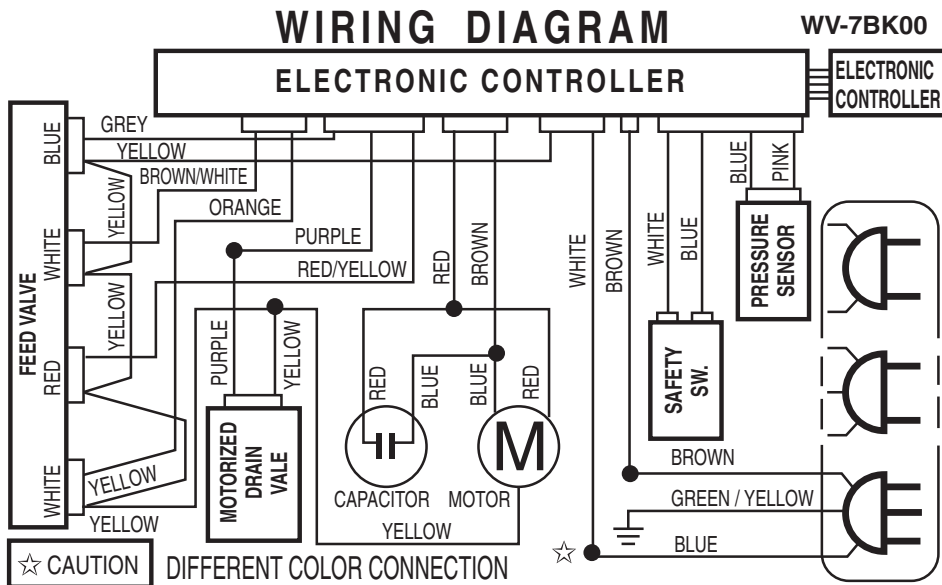


5. WIRING DIAGRAM

5.1 MODEL NA-F80A6 / NA-F80G6 / NA-F90G6



5.2 MODEL NA-F80X6 / NA-F90X6



6. TABLE OF ERRORS

Error Indication

If the following indications appear on the display panel (buzzer sounds, U and H Characters appear).

U11	<ul style="list-style-type: none">• Check if abnormalities listed below are seen in the external water hose.• Is the hose connected?• Is it clogged with lint?• Is it crushed?• Is the tip soaked in water?• Is a part of hose at a height of over 10 cm midway?• Is the extension hose longer than 3 m?• Is the hose being used too small? <p>Restart with opening and closing the lid.</p>
U12	<ul style="list-style-type: none">• Check if the lid is opened.• Close the lid.
U13	<ul style="list-style-type: none">• Is the washing machine is an unsteady position, or is it on an inclined floor surface?• Is the laundry unevenly distributed in the tub?• Arrange the laundry evenly in the tub, then close the lid.
U14	<ul style="list-style-type: none">• Check if you have forgotten to connect the water hose and to turn on the faucet.• Is the water supply cut off? <p>Restart with opening and closing the lid.</p>
U99	<ul style="list-style-type: none">• Check if lid is open when draining operation of the [CHILD LOCK] program is ON.
H01	<ul style="list-style-type: none">• In case of H displays such as “H01”, with no buzzer sounds pull out the power plug, and contact your dealer for service.

7. TROUBLESHOOTING

7.1 Table of Troubleshooting

Problem (have to check)		Corresponding device									Others
		Control panel	Water Inlet Valve	Water level sensor	Safety switch	Gear motor	Capacitor	Mechanism case	Holding spring	Packing valve	
Machine does not work	No light at the dial	0									
	Dial light is on	0	0								
Unusual amount of water inside machine	No sound of water from inlet valve	0	0								
	There is sound of water from inlet valve										Check water supply
	Not enough water flow										Check water supply
	Water never stops flowing in	0	0	0							
Washing system does not work	Pulsator does not spin (no sound of motor)	0									Motor
	Pulsator does not spin (there is sound of motor)						0	0			Belt, Motor
	Pulsator spins only one way	0						0			Pulley, Motor
	Pulsator spins slowly	0									Belt, Motor
Unusual draining	No draining	0									
	Drains slowly	0				0				0	
Unusual spinning system	No spinning (no sound of motor)									0	
	No spinning (Pulsator spins)	0			0						
	No force in spinning (tub spins slowly)							0			
Unusual loud noise	Loud noise during washing										Belt, Motor
	Loud noise during dry spinning							0			Check installation
Water leak	Water leaks from drain pipe							0	0		Something clogged
	Water leaks at the bottom of machine										Drain pipe A, Pulsator
Incorrect working	Water is supplied during spinning										Unbalanced tub, leaning
	Rinses more than 3 times				0				0		Unbalanced tub, leaning
	Pulsator spins despite no water				0						Air pipe clogged
	Cannot change function program	0	0								Description of usage
	Water does not flow out of a filter										Description of usage
	No overflow during water filling as rinsing										Description of usage
	Selected washing program cannot be memorized										Description of usage
	Fabric softener flows away too fast										Description of usage
	Pulsator spins in short range as washing and rinsing										Description of usage
	Works at low wash level then supplies water again										Description of usage

7. TROUBLESHOOTING

■ 7.2 The following symptoms are not trouble.

Symptoms	Causes
Machine begins filling water in the middle of the wash.	<ul style="list-style-type: none">When the laundry amount is large at the HIGH water level, the machine sometimes fills automatically. When level goes down, the machine fills automatically.
The water level is too high for the amount of laundry being washed.	<ul style="list-style-type: none">When the laundry is already soaked with water before the wash is started, or if there is water in the tub before the wash is started, the water level will sometimes be higher.
The water level is too low for the amount of laundry being washed.	<ul style="list-style-type: none">With light laundry made of synthetic or blended fabric, the water level will sometimes be lower.
Midway during spinning, the operation suddenly changes to rinsing.	<ul style="list-style-type: none">When the laundry is unbalanced during spin, rinsing and automatic correction of unbalanced laundry will begin. Later spinning will return to normal condition.
Water does not flow through the lint filter. Double Cascade does not operate.	<ul style="list-style-type: none">When the water level is set to very low, water sometimes will not flow through the lint filter. Double Cascade does not operate when these settings have been selected.
Softener spills out from softener drawer.	<ul style="list-style-type: none">Keep the level of the softener indicated to prevent the softener from flowing immediately.If you close the softener drawer forcefully, softener may spill out of the drawer.
During draining, the laundry and the spinner rotates with irregular movements.	<ul style="list-style-type: none">To suppress soap suds build-up, the washing tub turns slowly and quickly.
The buttons do not work.	<ul style="list-style-type: none">Only the [WATER LEVEL] button is available after the machine begins washing.To change the setting, press the [START/HOLD] button or press the [POWER OFF/ON] button and reconfigure the setting.
If you start with the rinse cycle, the tub is not filled with water.	<ul style="list-style-type: none">When there is water in the tub, the operation starts with the draining. After spin cycle is finished, the tub will be filled with water.
Washing machine does not run at all.	<ul style="list-style-type: none">Check if there is power failure.Check if the power fuse has blown out or the breaker is actuated.Check if the power plug is plugged in thoroughly.Check if the "power switch" has been pressed.Has the water faucet been turned on?Check if the [START/HOLD] button has been pressed.Has the machine been programmed under [RESERVE] timer?

7. TROUBLESHOOTING

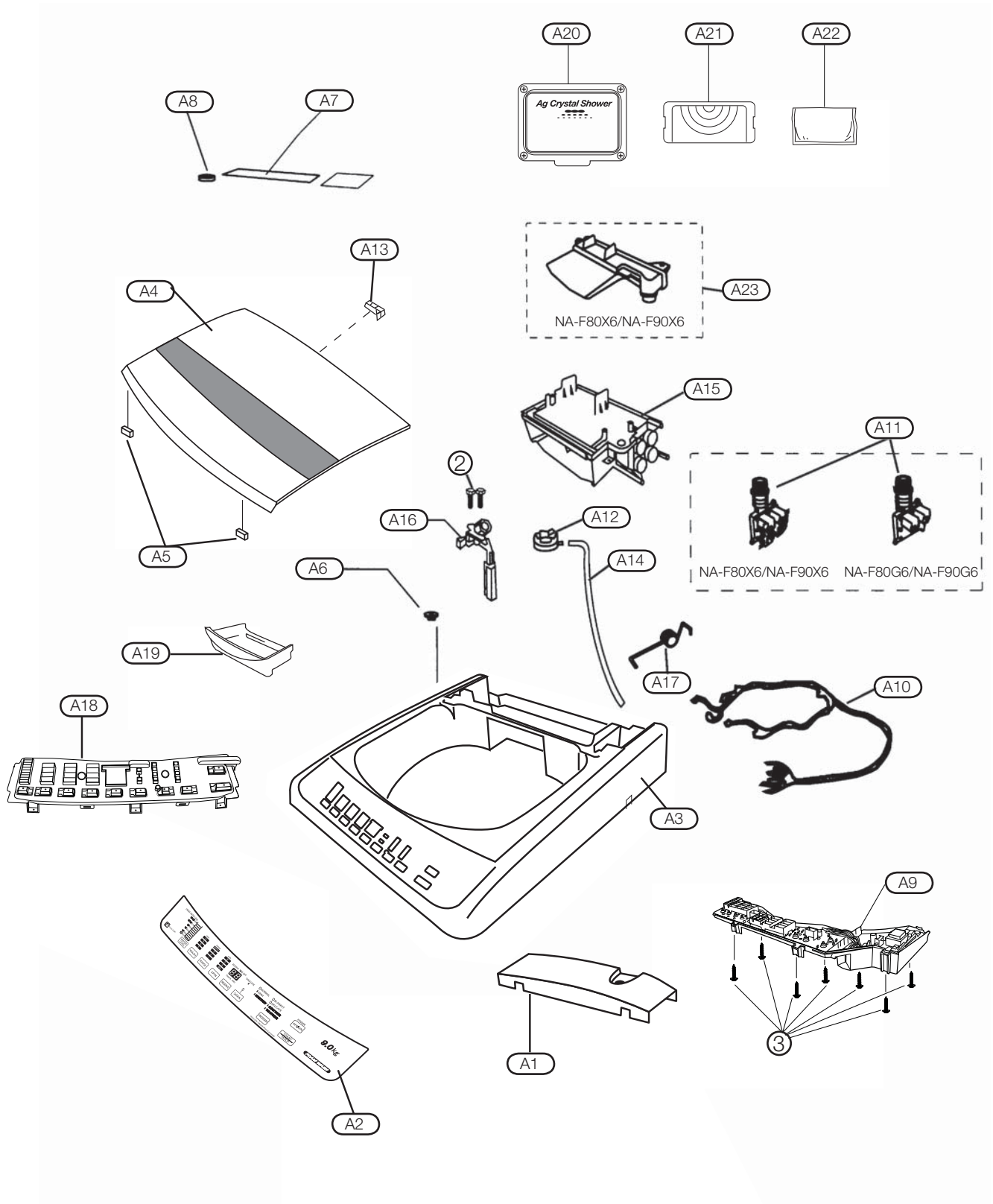
■ 7.2 The following symptoms are not trouble.

Symptoms	Causes
Machine begins filling water in the middle of the wash.	<ul style="list-style-type: none">• When the laundry amount is large at the HIGH water level, the machine sometimes fills automatically. When level goes down, the machine fills automatically.
Water is not supplied.	<ul style="list-style-type: none">• Check if the water faucet is turned on.• Is the water supply cut off?• Check if the connection of the water supply hose is clogged with dirt.• Check if the lid is opened. Close the lid.
Washing operation still continue even though the expected finishing time had passed on Reserve Program.	<ul style="list-style-type: none">• Washing time will be longer because of laundry unbalance, water feeding and draining condition.
Buzzer sounds followed by a draining when opening the lid during wash and rinse.	<ul style="list-style-type: none">• In the case when open the lid after setting the [CHILD LOCK] mode, it will force the draining process. Pull out power plug from the outlet and replug it after 5 seconds.
Tub shaking with the sound of water.	<ul style="list-style-type: none">• This is the sound of the liquid to maintain the balance during spinning.
Water supply failure.	<ul style="list-style-type: none">• Normally after the water supply failure, the water will become muddy. Detach the water feeding hose and turn on the water faucet to release to due muddy water. Fix water hose and start washing.

8. LOCATION OF PARTS AND REPLACEMENT PARTS

8.1 Location of Parts - A

NA-F80A6 / NA-F80G6 / NA-F80X6 / NA-F90G6 / NA-F90X6



8. LOCATION OF PARTS AND REPLACEMENT PARTS

8.2.1 Replacement of Parts List - A

Model NA-F80A6

Ref. No.	Part Name & Descriptic	Part Number	Safety	TH	MAL	SIN (Local)	SIN (Exp)	VIET
A 1	Panel A	AXW01307BL0J		1	1	1	1	1
A 2	Panel face B	AXW01467BP0A		1 (EXC.)				
		AXW01467BP5A			1 (EXC.)	1 (EXC.)	1 (EXC.)	1 (EXC.)
A 3	Body B	AXW01027BK0J		1	1	1	1	1
A 4	Lid Unit	AXW001G7BP0J	S	1 (EXC.)	1 (EXC.)	1 (EXC.)	1 (EXC.)	1 (EXC.)
A 5	Lid Packing A	AXW01646UP00		4	4	4	4	4
A 6	Leveler	AXW03536DKA0		1	1	1	1	1
A 7	Spinner lid label	AXW11177BK0A		1				
		AXW11177BK5A			1	1	1	
		AXW11177BKKA						1
A 8	Feeding port packing	AXW02676UP00		1	1	1	1	1
A 9	Controller Unit	AXW024C7BP06	S	1 (EXC.)	1 (EXC.)	1 (EXC.)	1 (EXC.)	1
A 10	Connector Lead wire unit	AXW014A7BL00	S	1	1	1	1	1
A 11	Feed Valve	AXW292120906	S	1	1	1	1	1
A 12	Pressure sensor unit	AXW024T03300	S	1	1	1	1	1
		AXW024T02800		1	1	1	1	1
A 13	Lid Hinge Shaft	AXW01937BK00		2	2	2	2	2
A 14	Sub drain hose unit	AXW002Q6XB00		1	1	1	1	1
A 15	Detergent case unit	AXW021B6XC00		1	1	1	1	1
A 16	Safety switch	AXW166123400	S	1	1	1	1	1
		AXW166122910		1	1	1	1	1
A 17	Lid hinge spring	AXW11167BK00		1	1	1	1	1
A 18	Panel face C	AXW01477BK00		1	1	1	1	1
A 19	Detergent case B	AXW21516XC0J		1	1	1	1	1

SCREWS

No.	Part Name	Part Number	Safety	TH	MAL	SIN (Local)	SIN (Exp)	VIET
1	Special Tapping Screw	XTWAXW469J		2	2	2	2	2
2	Binding Tapping Screw	XTB4+12CFJ		7	7	7	7	7
3		XTB4+15CFJ		3	3	3	3	3
4		XTB4+15CFJ		2	2	2	2	2
5		XTB4+15CFJ		2	2	2	2	2
6		XTB4+15CFJ		2	2	2	2	2
7		XTB4+15CFJ		2	2	2	2	2

8. LOCATION OF PARTS AND REPLACEMENT PARTS

8.2.2 Replacement of Parts List - A

Model NA-F80G6 / NA-F90G6

Ref. No.	Part Name & Descriptive	Part Number	Safety	NA-F80G6				NA-F90G6					
				TH	MAL	SIN (Local)	SIN (Exp)	TH	MAL	IND	MID EAST	IRAN (PGF)	PHIL
A 1	Panel A	AXW01307BL0J		1 (EXC.)	1 (EXC.)	1 (EXC.)	1 (EXC.)						
		AXW01307BL0A						1 (EXC.)	1 (EXC.)	1 (EXC.)	1 (EXC.)	1 (EXC.)	1 (EXC.)
A 2	Panel face B	AXW01467BN0J		1 (EXC.)									
		AXW01467BN5J			1 (EXC.)	1 (EXC.)	1 (EXC.)						
		AXW01467BL0J						1 (EXC.)					
		AXW01467BL5J							1 (EXC.)	1 (EXC.)	1 (EXC.)	1 (EXC.)	1 (EXC.)
A 3	Body B	AXW01027BK0J		1	1	1	1	1 (EXC.)	1 (EXC.)	1 (EXC.)	1 (EXC.)	1 (EXC.)	1 (EXC.)
A 4	Lid Unit	AXW001G7BN0J	S	1 (EXC.)	1 (EXC.)	1 (EXC.)	1 (EXC.)						
		AXW001G7BL0A						1 (EXC.)	1 (EXC.)	1 (EXC.)	1 (EXC.)	1 (EXC.)	1 (EXC.)
A 5	Lid Packing A	AXW01646UP00		4	4	4	4	4	4	4	4	4	4
A 6	Leveler	AXW03536DKA0		1	1	1	1	1	1	1	1	1	1
A 7	Spinner lid label	AXW11177BK0A		1				1					
		AXW11177BK5A			1	1	1		1	1	1	1	1
A 8	Feeding port packing	AXW02676UP00		1	1	1	1	1	1	1	1	1	1
A 9	Controller Unit	AXW024C7BN06	S	1 (EXC.)	1 (EXC.)	1 (EXC.)	1 (EXC.)						
		AXW024C7BL06						1 (EXC.)	1 (EXC.)	1 (EXC.)	1 (EXC.)	1 (EXC.)	1 (EXC.)
A 10	Connector Lead wire unit	AXW014A7BL00	S	1	1	1	1	1 (EXC.)	1 (EXC.)	1 (EXC.)	1 (EXC.)	1 (EXC.)	1 (EXC.)
A 11	Feed Valve	AXW292120916	S	1	1	1	1	1	1	1	1	1	1
A 12	Pressure sensor unit	AXW024T03300	S	1	1	1	1	1	1	1	1	1	1
		AXW024T02800		1	1	1	1	1	1	1	1	1	1
A 13	Lid Hinge Shaft	AXW01937BK00		2	2	2	2	2	2	2	2	2	2
A 14	Sub drain hose unit	AXW002Q6XB00		1	1	1	1	1	1	1	1	1	1
A 15	Detergent case unit	AXW021B6XC00		1	1	1	1	1	1	1	1	1	1
A 16	Safety switch	AXW166123400	S	1	1	1	1	1	1	1	1	1	1
		AXW166122910		1	1	1	1	1	1	1	1	1	1
A 17	Lid hinge spring	AXW11167BK00		1	1	1	1	1	1	1	1	1	1
A 18	Panel face C	AXW01477BK00		1	1	1	1	1	1	1	1	1	1
A 19	Detergent case B	AXW21516XC0J		1	1	1	1	1	1	1	1	1	1

SCREWS

No.	Part Name	Part Number	Safety	NA-F80G6				NA-F90G6					
				TH	MAL	SIN (Local)	SIN (Exp)	TH	MAL	IND	MID EAST	IRAN (PGF)	PHIL
1	Special Tapping Screw	XTW AXW469J		2	2	2	2	2	2	2	2	2	2
2	Binding Tapping Screw	XTB4+12CFJ		7	7	7	7	7	7	7	7	7	7
3		XTB4+15CFJ		3	3	3	3	3	3	3	3	3	3
4		XTB4+15CFJ		2	2	2	2	2	2	2	2	2	2
5		XTB4+15CFJ		2	2	2	2	2	2	2	2	2	2
6		XTB4+15CFJ		2	2	2	2	2	2	2	2	2	2
7		XTB4+15CFJ		2	2	2	2	2	2	2	2	2	2

8. LOCATION OF PARTS AND REPLACEMENT PARTS

8.2.3 Replacement of Parts List - A

Model NA-F80X6 / NA-F90X6

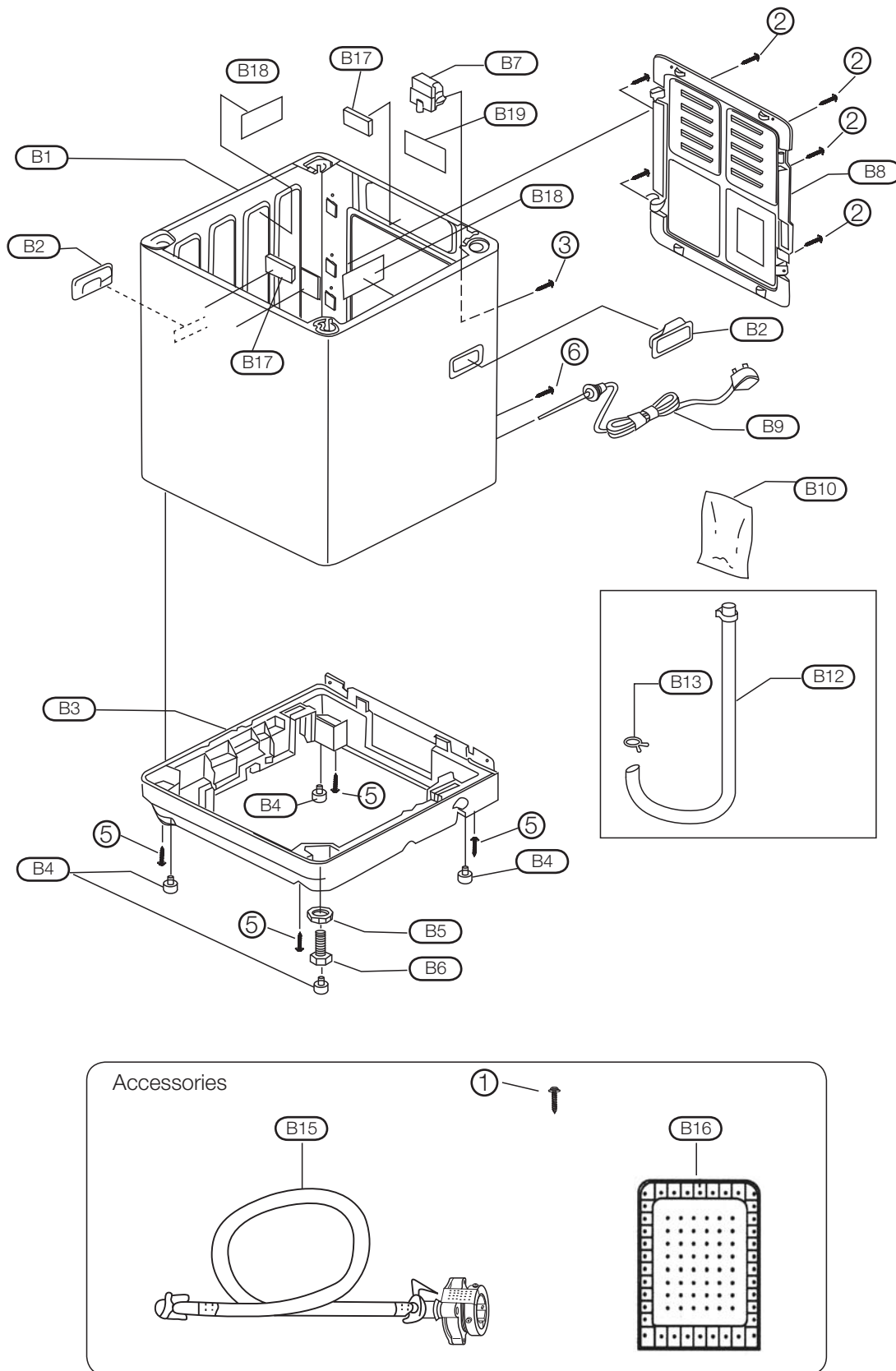
Ref. No.	Part Name & Descriptive	Part Number	Safety	NA-F80X6				NA-F90X6				
				TH	MAL	SIN (Exp)	VIET	TH	MAL	SIN (Local)	SIN (Exp)	VIET
A 1	Panel A	AXW01307BK0A		1 (EXC.)	1 (EXC.)	1 (EXC.)	1 (EXC.)					
		AXW01307BK0S					1 (EXC.)	1 (EXC.)	1 (EXC.)	1 (EXC.)	1 (EXC.)	
A 2	Panel face B	AXW01467BM0A		1 (EXC.)								
		AXW01467BM5A			1 (EXC.)	1 (EXC.)	1 (EXC.)					
		AXW01467BK0A						1 (EXC.)				
		AXW01467BK5A							1 (EXC.)	1 (EXC.)	1 (EXC.)	1 (EXC.)
A 3	Body B	AXW01027BK0A		1	1	1	1	1 (EXC.)	1 (EXC.)	1 (EXC.)	1 (EXC.)	1 (EXC.)
A 4	Lid Unit	AXW001G7BM0A	S	1 (EXC.)	1 (EXC.)	1 (EXC.)	1 (EXC.)					
		AXW001G7BK0S						1 (EXC.)	1 (EXC.)	1 (EXC.)	1 (EXC.)	1 (EXC.)
A 5	Lid Packing A	AXW01646UP00		1	1	1	1	1	1	1	1	1
A 6	Leveler	AXW03536DKA0		1	1	1	1	1	1	1	1	1
A 7	Spinner lid label	AXW11177BK0A		1				1 (EXC.)				
		AXW11177BK5A			1	1	1		1 (EXC.)	1 (EXC.)	1 (EXC.)	
		AXW11177BKKA										1 (EXC.)
A 8	Feeding port packing	AXW02676UP00		1	1	1	1	1	1	1	1	1
A 9	Controller Unit	AXW024C7BM06	S	1 (EXC.)	1 (EXC.)	1 (EXC.)	1 (EXC.)					
		AXW024C7BK06						1 (EXC.)	1 (EXC.)	1 (EXC.)	1 (EXC.)	1 (EXC.)
A 10	Connector Lead wire unit	AXW014A7BK00	S	1	1	1	1	1 (EXC.)	1	1	1	1
A 11	Feed Valve	AXW292120806	S	1	1	1	1	1	1	1	1	1
A 12	Pressure sensor unit	AXW024T03300	S	1	1	1	1	1	1	1	1	1
		AXW024T02800		1	1	1	1	1	1	1	1	1
A 13	Lid Hinge Shaft	AXW01937BK00		2	2	2	2	2 (EXC.)	2 (EXC.)	2 (EXC.)	2 (EXC.)	2 (EXC.)
A 14	Sub drain hose unit	AXW002Q6XB00		1	1	1	1	1	1	1	1	1
A 15	Detergent case unit	AXW021B7BK00		1	1	1	1	1 (EXC.)	1 (EXC.)	1 (EXC.)	1 (EXC.)	1 (EXC.)
A 16	Safety switch	AXW166123400	S	1	1	1	1	1	1	1	1	1
		AXW166122910		1	1	1	1	1	1	1	1	1
A 17	Lid hinge spring	AXW11167BK00		1	1	1	1	1 (EXC.)	1 (EXC.)	1 (EXC.)	1 (EXC.)	1 (EXC.)
A 18	Panel face C	AXW01477BK00		1	1	1	1	1 (EXC.)	1 (EXC.)	1 (EXC.)	1 (EXC.)	1
A 19	Detergent case B	AXW21516XB0A		1	1	1	1	1	1	1	1	1
A20	Window	AXW21057BK00		1	1	1	1	1	1	1	1	1
A21	Tablet Plate	AXW07537BK00		1	1	1	1	1	1	1	1	1
A22	Tablet Unit	AXW007E7BK00		1	1	1	1	1	1	1	1	1
A23	Nozzle Unit	AXW008E7BK00		1	1	1	1	1	1	1	1	1

SCREWS

No.	Part Name	Part Number	Safety	NA-F80X6				NA-F90X6				
				TH	MAL	SIN (Exp)	VIET	TH	MAL	SIN (Local)	SIN (Exp)	VIET
1	Special Tapping Screw	XTW AXW469J		2	2	2	2	2	2	2	2	2
2	Binding Tapping Screw	XTB4+12CFJ		7	7	7	7	7	7	7	7	7
3		XTB4+15CFJ		3	3	3	3	3	3	3	3	3
4		XTB4+15CFJ		2	2	2	2	2	2	2	2	2
5		XTB4+15CFJ		2	2	2	2	2	2	2	2	2
6		XTB4+15CFJ		2	2	2	2	2	2	2	2	2
7		XTB4+15CFJ		2	2	2	2	2	2	2	2	2

8. LOCATION OF PARTS AND REPLACEMENT PARTS

8.3 Location of Parts List - B



8. LOCATION OF PARTS AND REPLACEMENT PARTS

8.4.1 Replacement of Parts List - B

Model NA-F80A6

Ref. No.	Part Name & Descriptic	Part Number	Safety	TH	MAL	SIN (Local)	SIN (Exp)	VIET
B 1	Body A Unit	AXW001A7BK0J		1	1	1		
		AXW001A7BK5J					1	1
B 2	Grip	AXW01106UP0J		2	2	2	2	2
B 3	Base A	AXW03016XB00		1	1	1	1	1
B 4	Leg Covering	AXW03396UP00		4	4	4	4	4
B 5	Adjustable Leg Thumb	AXW03436JZ00		1	1	1	1	1
B 6	Adjustable Leg	AXW03356UP00		1	1	1	1	1
B 7	Capacitor	AXW04037P907	S	1	1	1	1	1
B 8	Back Panel	AXW01566ZV00		1	1	1	1	1
B 9	Power Cord Unit	AXW004A72924	S	1				
		AXW004A78115			1	1		
		AXW004A77254			1	1		
		AXW004A73014					1	1
B 10	Chemical Cover	AXW04486UP20		1	1	1	1	1
B 12	Flexible Hose B Unit	AXW002E6XB00		1	1	1	1	1
B 13	Hose Band	AXW02456XB00		1	1	1	1	1
B 15	Service Pressure Hose Unit	AXW012D7BK00		1		1	1	1
B 16	Bottom Cover	AXW21586ZR00		1	1	1	1	1
B 17	Body A Protection	AXW90466NTA0		2	2	2	2	2
		AXW90466AA5M		2	2	2	2	2
B 19	Name Plate	AXW01537BP00	S	1 (EXC.)				
		AXW01537BP50			1 (EXC.)	1 (EXC.)		
		AXW01537BPA0				1 (EXC.)		
		AXW01537BPK0					1 (EXC.)	

SCREWS

No.	Part Name	Part Number	Safety	TH	MAL	SIN (Local)	SIN (Exp)	VIET
1	Special Tapping Screw	XTTAXW444J		8	8	8	8	8
2		XTTAXW444J		6	6	6	6	6
3		XTWAXW471		1	1	1	1	1
4	Pan Head Tapping Screw	XTN4+8HFJ		1	1	1	1	1
5	Bind Tapping Screw	XYNAXW438J		1	1	1	1	1

8. LOCATION OF PARTS AND REPLACEMENT PARTS

8.4.2 Replacement of Parts List - B

Model NA-F80G6 / NA-F90G6

Ref. No.	Part Name & Descriptive	Part Number	Safety	NA-F80G6				NA-F90G6					
				TH	MAL	SIN (Local)	SIN (Exp)	TH	MAL	IND	MID EAST	IRAN (PGF)	PHIL
B 1	Body A Unit	AXW001A7BK0J		1	1	1		1 (EXC.)	1 (EXC.)		1 (EXC.)	1 (EXC.)	
		AXW001A7BK5J					1			1			1
B 2	Grip	AXW01106UP0J		1	1	1	1	1	1	1	1	1	1
B 3	Base A	AXW03016XB00		1	1	1	1	1	1	1	1	1	1
B 4	Leg Covering	AXW03396UP00		1	1	1	1	1	1	1	1	1	1
B 5	Adjustable Leg Thumb	AXW03436JZ00		1	1	1	1	1	1	1	1	1	1
B 6	Adjustable Leg	AXW03356UP00		1	1	1	1	1	1	1	1	1	1
B 7	Capacitor	AXW04037P907	S	1	1	1	1	1	1	1	1	1	1
B 8	Back Panel	AXW01566ZV00		1	1	1	1	1	1	1	1	1	1
B 9	Power Cord Unit	AXW004A83400	S										1
		AXW004A72914										1	
		AXW004A72924		1				1					
		AXW004A78115			1	1			1		1		
		AXW004A77254			1	1			1		1		
		AXW004A73014						1			1		
B 10	Chemical Cover	AXW04486UP20		1	1	1	1	1	1	1	1	1	1
B 12	Flexible Hose B Unit	AXW002E6XB00		1	1	1	1	1	1	1	1	1	1
B 13	Hose Band	AXW02456XB00		1	1	1	1	1	1	1	1	1	1
B 15	Service Pressure Hose Unit	AXW012D7BK00		1	1	1	1	1	1	1	1	1	1
B 16	Bottom Cover	AXW21586ZR00		1	1	1	1	1	1	1	1	1	1
B 17	Body A Protection	AXW90466NTA0		1	1	1	1	1	1	1	1	1	1
B 18		AXW90466AA5M		1	1	1	1	1	1	1	1	1	1
B 19	Name Plate	AXW01537BN00	S	1 (EXC.)									
		AXW01537BN50			1 (EXC.)		1 (EXC.)						
		AXW01537BNA0				1 (EXC.)							
		AXW01537BL00						1 (EXC.)					
		AXW01537BL50							1 (EXC.)	1 (EXC.)	1 (EXC.)	1 (EXC.)	
		AXW01537BLF0											1 (EXC.)

SCREWS

No.	Part Name	Part Number	Safety	NA-F80G6				NA-F90G6					
				TH	MAL	SIN (Local)	SIN (Exp)	TH	MAL	IND	MID EAST	IRAN (PGF)	PHIL
1	Special Tapping Screw	XTTAXW444J		8	8	8	8	8	8	8	8	8	8
2		XTTAXW444J		6	6	6	6	6	6	6	6	6	6
3		XTWAXW471		1	1	1	1	1	1	1	1	1	1
4	Pan Head Tapping Screw	XTN4+8HFJ		1	1	1	1	1	1	1	1	1	1
5	Bind Tapping Screw	XYNAXW438J		1	1	1	1	1	1	1	1	1	1

8. LOCATION OF PARTS AND REPLACEMENT PARTS

8.4.3 Replacement of Parts List - B

Model NA-F80X6 / NA-F90X6

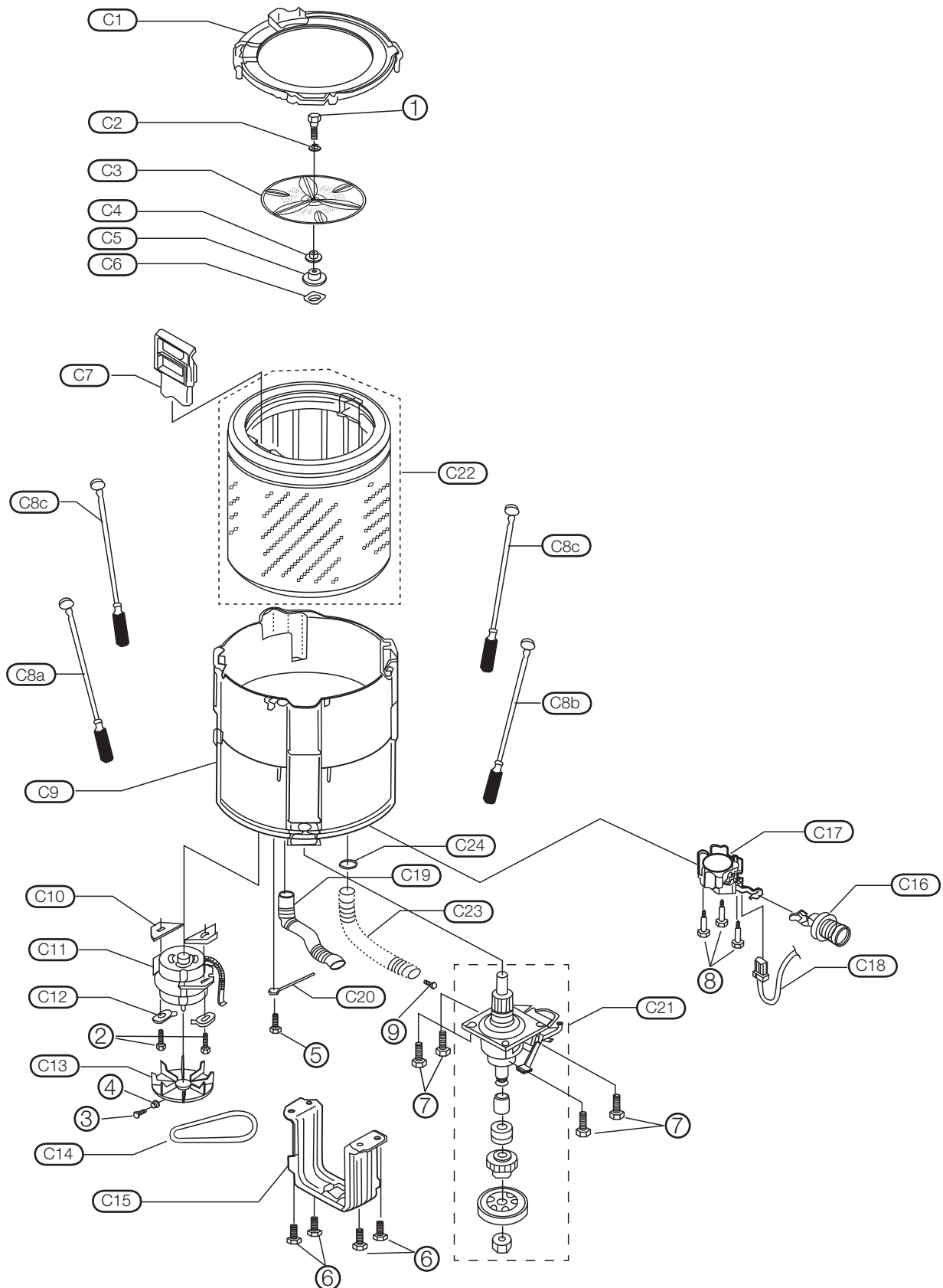
Ref. No.	Part Name & Descriptive	Part Number	Safety	NA-F80X6				NA-F90X6					
				TH	MAL	SIN (Exp)	VIET	TH	MAL	SIN (Local)	SIN (Exp)	VIET	
B 1	Body A Unit	AXW001A7BK0A		1	1		1	1 (EXC.)	1 (EXC.)	1 (EXC.)		1 (EXC.)	
		AXW001A7BK5A				1					1 (EXC.)		
B 2	Grip	AXW01106UP0J		1	1	1	1	1	1	1	1	1	
B 3	Base A	AXW03016XB00		1	1	1	1	1	1	1	1	1	
B 4	Leg Covering	AXW03396UP00		1	1	1	1	1	1	1	1	1	
B 5	Adjustable Leg Thumb	AXW03436JZ00		1	1	1	1	1	1	1	1	1	
B 6	Adjustable Leg	AXW03356UP00		1	1	1	1	1	1	1	1	1	
B 7	Capacitor	AXW04037P907	S	1	1	1	1	1	1	1	1	1	
B 8	Back Panel	AXW01566ZV00		1	1	1	1	1	1	1	1	1	
B 9	Power Cord Unit	AXW004A72924	S	1				1					
		AXW004A78115			1				1				
		AXW004A77254		1	1				1				
		AXW004A73014				1	1					1	1
B 10	Chemical Cover	AXW04486UP20		1	1	1	1	1	1	1	1	1	
B 12	Flexible Hose B Unit	AXW002E6XB00		1	1	1	1	1	1	1	1	1	
B 13	Hose Band	AXW02456XB00		1	1	1	1	1	1	1	1	1	
B 15	Service Pressure Hose Unit	AXW012D7BK00		1	1	1	1	1	1	1	1	1	
B 16	Bottom Cover	AXW21586ZR00		1	1	1	1	1	1	1	1	1	
B 17	Body A Protection	AXW90466NTA0		1	1	1	1	1	1	1	1	1	
B 18		AXW90466AA5M		1	1	1	1	1	1	1	1	1	
B 19	Name Plate	AXW01537BM00	S	1 (EXC.)									
		AXW01537BM50			1 (EXC.)	1 (EXC.)	1 (EXC.)						
		AXW01537BK00						1 (EXC.)					
		AXW01537BK50							1 (EXC.)		1 (EXC.)		
		AXW01537BKA0								1 (EXC.)			
		AXW01537BKK0											1 (EXC.)

SCREWS

No.	Part Name	Part Number	Safety	NA-F80X6				NA-F90X6				
				TH	MAL	SIN (Exp)	VIET	TH	MAL	SIN (Local)	SIN (Exp)	VIET
1	Special Tapping Screw	XTTAXW444J		8	8	8	8	8	8	8	8	8
2		XTTAXW444J		6	6	6	6	6	6	6	6	6
3		XTWAXW471		1	1	1	1	1	1	1	1	1
4	Pan Head Tapping Screw	XTN4+8HFJ		1	1	1	1	1	1	1	1	1
5	Bind Tapping Screw	XYNAXW438J		1	1	1	1	1	1	1	1	1

8. LOCATION OF PARTS AND REPLACEMENT PARTS

8.5 Location of Parts List - C



8. LOCATION OF PARTS AND REPLACEMENT PARTS

8.6.1 Replacement of Parts List - C

Model NA-F80A6

Ref. No.	Part Name & Descriptio	Part Number	Safety	TH	MAL	SIN (Local)	SIN (Exp)	VIET
C 1	Outer Tub Cover	AXW32246CH10		1	1	1	1	1
C 2	O-ring	AXW02576BM00		1	1	1	1	1
C 3	Pulsator Unit	AXW05016XC10		1 (EXC.)	1 (EXC.)	1 (EXC.)	1 (EXC.)	1 (EXC.)
C 4	Shaft Bushing	AXW05046ZR00		1	1	1	1	1
C 5	Spinner Shaft Flange Nut	AXW15176RU00		1	1	1	1	1
C 6	Spinner Flange Washer B	AXW151980200		1	1	1	1	1
C 7	Filter Unit	AXW022A6RU00		1	1	1	1	1
C 8a	Suspension Unit (F-R)	AXW034U7BK50		1	1	1	1	1
C 8b	Suspension Unit (F-L)	AXW034U7BKA0		1	1	1	1	1
C 8c	Suspension Unit (R-R/L)	AXW034U7BK00		2	2	2	2	2
C 9	Outer Tub A	AXW12016CG10		1	1	1	1	1
C 10	Motor Washer A	AXW04207BK00		2	2	2	2	2
C 11	Motor	AXW040157626	S	1	1	1	1	1
C 12	Motor Washer B	AXW04217BK00		2	2	2	2	2
C 13	Motor Pulley	AXW04116XB00		1	1	1	1	1
C 14	V-Belt	AXW041219850		1	1	1	1	1
C 15	Spinner Plate B	AXW32325TP10		1	1	1	1	1
C 16	Valve Unit	AXW009D6ZR00		1	1	1	1	1
C 17	Gear Motor	AXW348201006	S	1	1	1	1	1
C 17	Gear Motor	AXW348202516	S	1	1	1	1	1
C 18	Lead Wire Unit	AXW014B6UP00	S	1	1	1	1	1
C 19	Over Flow Hose B	AXW02345TW0M		1	1	1	1	1
C 20	Earth Wire Unit	AXW003F6UP00		1	1	1	1	1
C 21	Mechanism Case Unit	AXW020A6UA50		1	1	1	1	1
C 22	Tub Unit	AXW002A6ME00		1 (EXC.)	1 (EXC.)	1 (EXC.)	1 (EXC.)	1 (EXC.)
C 23	Flexible Hose A Unit	AXW002D6EM00		1	1	1	1	1
C 24	Hose Band	AXW02456UP00		1	1	1	1	1

SCREWS

No.	Part Name	Part Number	Safety	TH	MAL	SIN (Local)	SIN (Exp)	VIET
1	Special Tapping Screw	XTWAXW529		8	8	8	8	8
2		XTBAXW453		2	2	2	2	2
3		XTWAXW530		8	8	8	8	8
4		XTWAXW529		6	6	6	6	6
5	Special small screw	XYMAXW601		1	1	1	1	1
6	Pna Head Tapping Screw	XTN4+8HFJ		1	1	1	1	1
7	Special Bolt	XVGAXW703J		1	1	1	1	1
8		XVGAXW839J		2	2	2	2	2
9		XVGAXW840J		4	4	4	4	4
10		XTWAXW6517J		2	2	2	2	2
11	Special Tapping Screw	XTWAXW6517J		6	6	6	6	6
12		XTWAXW435		4	4	4	4	4
13		XTWAXW6518J		3	3	3	3	3
14	Special Bolt	XTWAXW6517J		2	2	2	2	2
15	Special Tapping Screw	XTWAXW531		4	4	4	4	4
16	Special Bolt	XVGAXW0519SJ		1	1	1	1	1
17		XVGAXW643		1	1	1	1	1
18		XVGAXW401S		1	1	1	1	1

8. LOCATION OF PARTS AND REPLACEMENT PARTS

8.6.2 Replacement of Parts List - C

Model NA-F80G6 / NA-F90G6

Ref. No.	Part Name & Descriptive	Part Number	Safety	NA-F80G6				NA-F90G6					
				TH	MAL	SIN (Local)	SIN (Exp)	TH	MAL	IND	MID EAST	IRAN (PGF)	PHIL
C 1	Outer Tub Cover	AXW32246CH10		1	1	1	1	1	1	1	1	1	1
C 2	O-ring	AXW02576BM00		1	1	1	1	1	1	1	1	1	1
C 3	Pulsator	AXW05016ZR10		1	1	1	1	1	1	1	1	1	1
C 4	Shaft Bushing	AXW05046ZR00		1	1	1	1	1	1	1	1	1	1
C 5	Spinner Shaft Flange Nut	AXW15176RU00		1	1	1	1	1	1	1	1	1	1
C 6	Spinner Flange Washer B	AXW151980200		1	1	1	1	1	1	1	1	1	1
C 7	Filter Unit	AXW022A6RU00		1	1	1	1	1	1	1	1	1	1
C 8a	Suspension Unit (F-R)	AXW034U7BK50		1	1	1	1	1	1	1	1	1	1
C 8b	Suspension Unit (F-L)	AXW034U7BKA0		1	1	1	1	1	1	1	1	1	1
C 8c	Suspension Unit (R-R/L)	AXW034U7BK00		2	2	2	2	2	2	2	2	2	2
C 9	Outer Tub A	AXW12016CG10		1	1	1	1	1	1	1	1	1	1
C 10	Motor Washer A	AXW04207BK00		2	2	2	2	2	2	2	2	2	2
C 11	Motor	AXW040157616	S	1	1	1	1	1	1	1	1	1	1
C 12	Motor Washer B	AXW04217BK00		2	2	2	2	2	2	2	2	2	2
C 13	Motor Pulley	AXW04116XB00		1	1	1	1	1	1	1	1	1	
		AXW04117BK50											1 (EXC.)
C 14	V-Belt	AXW041219850		1	1	1	1	1	1	1	1	1	
		AXW041219050											1 (EXC.)
C 15	Spinner Plate B	AXW32325TP10		1	1	1	1	1	1	1	1	1	1
C 16	Valve Unit	AXW009D6ZR00		1	1	1	1	1	1	1	1	1	1
C 17	Gear Motor	AXW348201006	S	1	1	1	1	1	1	1	1	1	1
		AXW348202516		1	1	1	1	1	1	1	1	1	1
C 18	Lead Wire Unit	AXW014B6UP00	S	1	1	1	1	1	1	1	1	1	1
C 19	Over Flow Hose B	AXW02345TW0M		1	1	1	1	1	1	1	1	1	1
C 20	Earth Wire Unit	AXW003F6UP00		1	1	1	1	1	1	1	1	1	1
C 21	Mechanism Case Unit	AXW020A6UA50		1	1	1	1	1	1	1	1	1	1
C 22	Tub Unit	AXW002A7BK00		1	1	1	1	1	1	1	1	1	1
C 23	Flexible Hose A Unit	AXW002D6EM00		1	1	1	1	1	1	1	1	1	1
C 24	Hose Band	AXW02456UP00		1	1	1	1	1	1	1	1	1	1

SCREWS

No.	Part Name	Part Number	Safety	NA-F80G6				NA-F90G6					
				TH	MAL	SIN (Local)	SIN (Exp)	TH	MAL	IND	MID EAST	IRAN (PGF)	PHIL
1	Special Tapping Screw	XTWAXW529		8	8	8	8	8	8	8	8	8	8
2		XTBAXW453		4	4	4	4	4	4	4	4	4	4
3		XTWAXW530		8	8	8	8	8	8	8	8	8	8
4		XTWAXW529		6	6	6	6	6	6	6	6	6	6
5	Special small screw	XYMAXW601		1	1	1	1	1	1	1	1	1	1
6	Pna Head Tapping Screw	XTN4+8HFJ		1	1	1	1	1	1	1	1	1	1
7	Special Bolt	XVGAXW703J		1	1	1	1	1	1	1	1	1	1
8		XVGAXW839J		2	2	2	2	2	2	2	2	2	2
9		XVGAXW840J		4	4	4	4	4	4	4	4	4	4
10		XTWAXW6517J		2	2	2	2	2	2	2	2	2	2
11	Special Tapping Screw	XTWAXW6517J		6	6	6	6	6	6	6	6	6	6
12		XTWAXW435		4	4	4	4	4	4	4	4	4	4
13		XTWAXW6518J		3	3	3	3	3	3	3	3	3	3
14	Special Bolt	XTWAXW6517J		2	2	2	2	2	2	2	2	2	2
15	Special Tapping Screw	XTWAXW531		4	4	4	4	4	4	4	4	4	4
16	Special Bolt	XVGAXW0519SJ		1	1	1	1	1	1	1	1	1	1
17		XVGAXW643		1	1	1	1	1	1	1	1	1	1
18		XVGAXW401S		1	1	1	1	1	1	1	1	1	1

8. LOCATION OF PARTS AND REPLACEMENT PARTS

8.6.3 Replacement of Parts List - C

Model NA-F80X6 / NA-F90X6

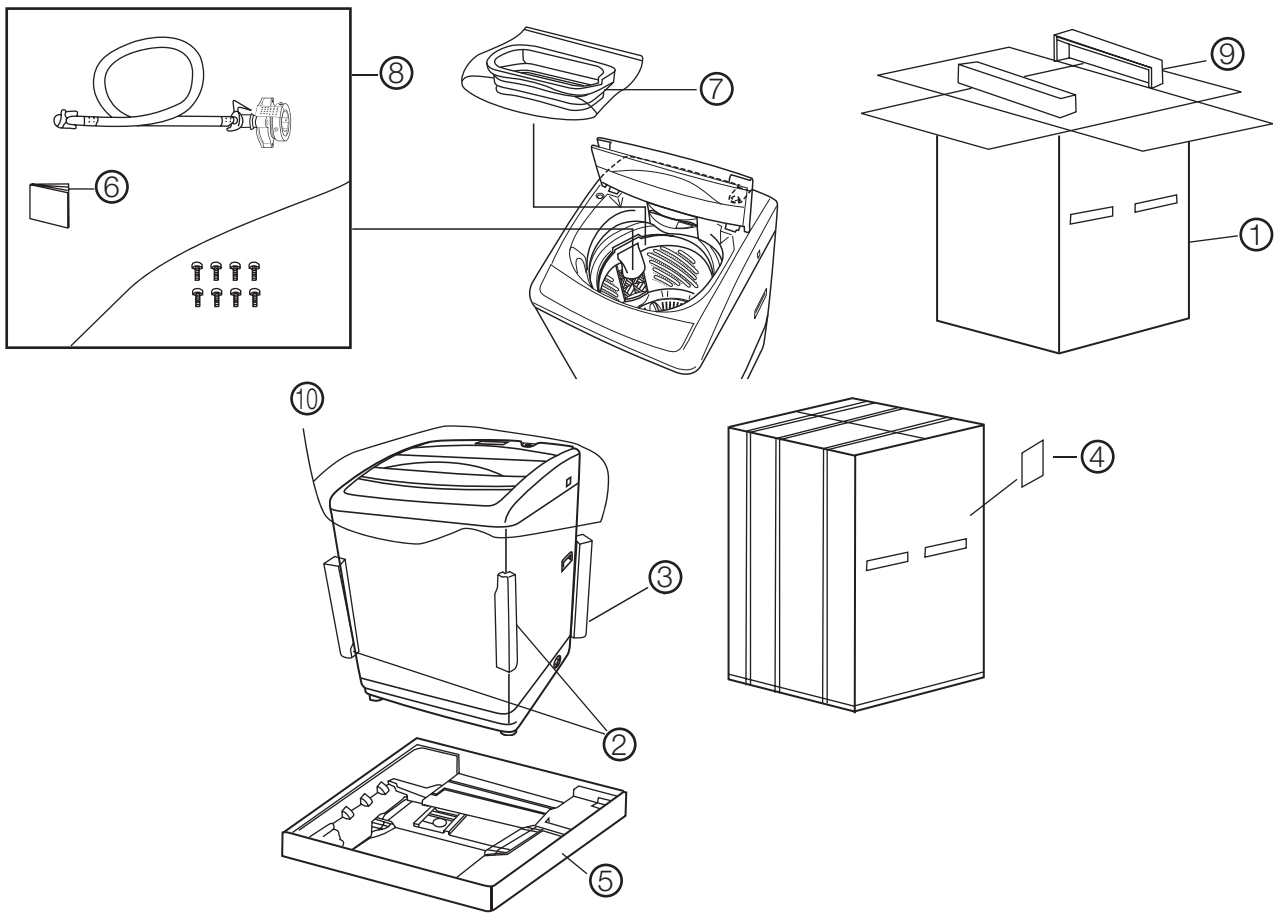
Ref. No.	Part Name & Descriptive	Part Number	Safety	NA-F80X6				NA-F90X6				
				TH	MAL	SIN (Exp)	VIET	TH	MAL	SIN (Local)	SIN (Exp)	VIET
C 1	Outer Tub Cover	AXW32246CH10		1	1	1	1	1	1	1	1	1
C 2	O-ring	AXW02576BM00		1	1	1	1	1	1	1	1	1
C 3	Pulsator	AXW05016ZR10		1	1	1	1	1 (EXC.)	1 (EXC.)	1 (EXC.)	1 (EXC.)	1 (EXC.)
C 4	Shaft Bushing	AXW05046ZR00		1	1	1	1	1	1	1	1	1
C 5	Spinner Shaft Flange Nut	AXW15176RU00		1	1	1	1	1	1	1	1	1
C 6	Spinner Flange Washer B	AXW151980200		1	1	1	1	1	1	1	1	1
C 7	Filter Unit	AXW022A6RU00		1	1	1	1	1	1	1	1	1
C 8a	Suspension Unit (F-R)	AXW034U7BK50		1	1	1	1	1 (EXC.)	1 (EXC.)	1 (EXC.)	1 (EXC.)	1 (EXC.)
C 8b	Suspension Unit (F-L)	AXW034U7BKA0		1	1	1	1	1 (EXC.)	1 (EXC.)	1 (EXC.)	1 (EXC.)	1 (EXC.)
C 8c	Suspension Unit (R-R/L)	AXW034U7BK00		2	2	2	2	2 (EXC.)	2 (EXC.)	2 (EXC.)	2 (EXC.)	2 (EXC.)
C 9	Outer Tub A	AXW12016CG10		1	1	1	1	1	1	1	1	1
C 10	Motor Washer A	AXW04207BK00		2	2	2	2	2 (EXC.)	2 (EXC.)	2 (EXC.)	2 (EXC.)	2 (EXC.)
C 11	Motor	AXW040157626	S	1	1	1	1	1	1	1	1	1
C 12	Motor Washer B	AXW04217BK00		2	2	2	2	2 (EXC.)	2 (EXC.)	2 (EXC.)	2 (EXC.)	2 (EXC.)
C 13	Motor Pulley	AXW04116XB00		1	1	1	1	1 (EXC.)	1 (EXC.)	1 (EXC.)	1 (EXC.)	1 (EXC.)
C 14	V-Belt	AXW041219850		1	1	1	1	1	1	1	1	1
C 15	Spinner Plate B	AXW32325TP10		1	1	1	1	1	1	1	1	1
C 16	Valve Unit	AXW009D6ZR00		1	1	1	1	1	1	1	1	1
C 17	Gear Motor	AXW348201006	S	1	1	1	1	1	1	1	1	1
		AXW348202516		1	1	1	1	1	1	1	1	1
C 18	Lead Wire Unit	AXW014B6UP00	S	1	1	1	1	1	1	1	1	1
C 19	Over Flow Hose B	AXW02345TW0M		1	1	1	1	1	1	1	1	1
C 20	Earth Wire Unit	AXW003F6UP00		1	1	1	1	1	1	1	1	1
C 21	Mechanism Case Unit	AXW020A6UA60		1	1	1	1	1	1	1	1	1
C 22	Tub Unit	AXW002A7BK00		1	1	1	1	1 (EXC.)	1 (EXC.)	1 (EXC.)	1 (EXC.)	1 (EXC.)
C 23	Flexible Hose A Unit	AXW002D6EM00		1	1	1	1	1	1	1	1	1
C 24	Hose Band	AXW02456UP00		1	1	1	1	1	1	1	1	1

SCREWS

No.	Part Name	Part Number	Safety	NA-F80X6				NA-F90X6				
				TH	MAL	SIN (Exp)	VIET	TH	MAL	SIN (Local)	SIN (Exp)	VIET
1	Special Tapping Screw	XTWAXW529		8	8	8	8	8	8	8	8	8
2		XTBAXW453		4	4	4	4	4	4	4	4	4
3		XTWAXW530		8	8	8	8	8	8	8	8	8
4		XTWAXW529		6	6	6	6	6	6	6	6	6
5	Special small screw	XYMAXW601		1	1	1	1	1 (EXC.)	1 (EXC.)	1 (EXC.)	1 (EXC.)	1 (EXC.)
6	Pna Head Tapping Screw	XTN4+8HFJ		1	1	1	1	1	1	1	1	1
7	Special Bolt	XVGAXW703J		1	1	1	1	1	1	1	1	1
8		XVGAXW839J		2	2	2	2	2	2	2	2	2
9		XVGAXW840J		4	4	4	4	4	4	4	4	4
10		XTWAXW6517J		2	2	2	2	2	2	2	2	2
11	Special Tapping Screw	XTWAXW6517J		6	6	6	6	6	6	6	6	6
12		XTWAXW435		4	4	4	4	4	4	4	4	4
13		XTWAXW6518J		3	3	3	3	3	3	3	3	3
14	Special Bolt	XTWAXW6517J		2	2	2	2	2	2	2	2	2
15	Special Tapping Screw	XTWAXW531		4	4	4	4	4	4	4	4	4
16	Special Bolt	XVGAXW0519SJ		1	1	1	1	1	1	1	1	1
17		XVGAXW643		1	1	1	1	1	1	1	1	1
18		XVGAXW401S		1	1	1	1	1	1	1	1	1

8. LOCATION OF PARTS AND REPLACEMENT PARTS

8.7 Location of Packing Part



8.8 Replacement of Packing Part List

Model NA-F80A6

Ref. No.	Part Name & Descriptive	Part Number	Safety	TH	MAL	SIN (Local)	SIN (Exp)	VIET
1	Protection case A	AXW90017BP00		1 (EXC.)				
		AXW90017BP50			1 (EXC.)			1 (EXC.)
		AXW90017BPA0					1 (EXC.)	1 (EXC.)
2	Corner Cushion	AXW90156XB00		1	1	1	1	1
		AXW90156UP00		1	1	1	1	1
4	Stock Card	AXW99186UP00		1	1	1	1	1
5	Protection case B Unit	AXW090B7BK00		1	1	1	1	1
6	Operating Instruction	AXW99017BP00		1				
		AXW99017BP50			1	1	1	1
7	Spin Tub Supporter	AXW90857BK00		1	1	1	1	1
8	Accessories Bag	AXW90576UP00		1	1	1	1	1
9	Body Cover	AXW90047BK00		1	1	1	1	1
10	Polythylene Cover	AXW90606XB00		1	1	1	1	1

8. LOCATION OF PARTS AND REPLACEMENT PARTS

8.8 Replacement of Packing Part List

Model NA-F80G6 / NA-F90G6

Ref. No.	Part Name & Descriptive	Part Number	Safety	NA-F80G6				NA-F90G6					
				TH	MAL	SIN (Local)	SIN (Exp)	TH	MAL	IND	MID EAST	IRAN (PGF)	PHIL
1	Protection case A	AXW90017BN00		1 (EXC.)									
		AXW90017BN50			1 (EXC.)								
		AXW90017BNA0				1	1						
		AXW90017BL00						1 (EXC.)					
		AXW90017BL50							1	1	1	1	1
2	Corner Cushion	AXW90156XB00		1	1	1	1	1	1	1	1	1	
3		AXW90156UP00		1	1	1	1	1	1	1	1	1	
4	Stock Card	AXW99186UP00		1	1	1	1	1	1	1	1	1	
5	Protection case B Unit	AXW090B7BK00		1	1	1	1	1	1	1	1	1	
6	Operating Instruction	AXW99017BL00		1				1					
		AXW99017BL50			1	1	1		1				
		AXW99017BLA0								1 (EXC.)		1 (EXC.)	
		AXW99017BLF0									1	1	
7	Spin Tub Supporter	AXW90857BK00		1	1	1	1	1	1	1	1	1	
8	Accessories Bag	AXW90576UP00		1	1	1	1	1	1	1	1	1	
9	Body Cover	AXW90047BK00		1	1	1	1	1	1	1	1	1	
10	Polythylene Cover	AXW90606XB00		1	1	1	1	1	1	1	1	1	

Model NA-F80X6 / NA-F90X6

Ref. No.	Part Name & Descriptive	Part Number	Safety	NA-F80X6				NA-F90X6				
				TH	MAL	SIN (Exp)	VIET	TH	MAL	SIN (Local)	SIN (Exp)	VIET
1	Protection case A	AXW90017BM00		1 (EXC.)								
		AXW90017BM50			1	1	1					
		AXW90017BK00						1 (EXC.)				
		AXW90017BK50							1			1 (EXC.)
		AXW90017BKA0								1 (EXC.)	1 (EXC.)	
2	Corner Cushion	AXW90156XB00		1	1	1	1	1	1	1	1	1
3		AXW90156UP00		1	1	1	1	1	1	1	1	
4	Stock Card	AXW99186UP00		1	1	1	1	1	1	1	1	1
5	Protection case B Unit	AXW090B7BK00		1	1	1	1	1 (EXC.)	1 (EXC.)	1 (EXC.)	1 (EXC.)	1 (EXC.)
6	Operating Instruction	AXW99017BK00		1				1				
		AXW99017BK50			1	1			1	1	1	
		AXW99017BK00					1					1
7	Spin Tub Supporter	AXW90857BK00		1	1	1	1	1 (EXC.)	1 (EXC.)	1 (EXC.)	1 (EXC.)	1 (EXC.)
8	Accessories Bag	AXW90576UP00		1	1	1	1	1	1	1	1	1
9	Body Cover	AXW90047BK00		1	1	1	1	1 (EXC.)	1 (EXC.)	1 (EXC.)	1 (EXC.)	1 (EXC.)
10	Polythylene Cover	AXW90606XB00		1	1	1	1	1	1	1	1	1