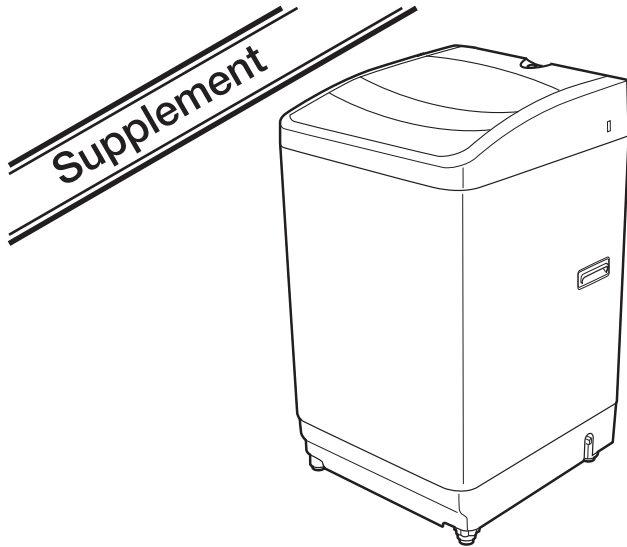


# Service Manual

## Fully Automatic Washing machine



**NA-F62B1**

**NA-F70B1**

**(Hz Free)**

**NA-F701B**

**NA-F801B**

**Product colour**

Grey

White

**Destination**

Thailand, Vietnam, Indonesia, Singapore (DBD), Malaysia, RBD, India, UAE (ONE), Oman, Kuwait, Qatar, UAE (PGF), Saudi Arabia, Libya, Fiji, Philippines, UAE (Local), UAE (Export)  
(Revision : March 2009)

**Please use this manual together with the Service Manual Order No. PHAT070402C3**

**⚠ WARNING**

This service information is designed for experienced repair technicians only and is not designed for use by the general public. It does not contain warnings or cautions to advise non-technical individuals of potential dangers in attempting to service a product. Products powered by electricity should be serviced or repaired only by experienced professional technicians. Any attempt to service or repair the product or products dealt with in this service information by anyone else could result in serious injury or death.

**IMPORTANT SAFETY NOTICE**

There are special components used in this equipment which are important for safety. These parts are marked by ⚠ in the Schematic Diagrams, Circuit Board Diagrams, Exploded Views and Replacement Parts List. It is essential that these critical parts should be replaced with manufacturer's specified parts to prevent shock, fire or other hazards. Do not modify the original design without permission of manufacturer.

## Specification

Model	NA-F62B1	NA-F62B1 (Hz Free)	NA-F70B1	NA-F70B1 (Hz Free)	NA-F701B	NA-F801B
Rate voltage and	220V/50Hz Thailand,Vietnam,UAE (PGF), Singapore (RBD),Fiji,Libya	-	Thailand,Vietnam,Fiji, Singapore (RBD)	UAE (Export)	Indonesia	Indonesia
Frequency	220V/60Hz	-	-	Saudi Arabia	-	-
	230V/50Hz	Singapore (DBD), India	-	Singapore (DBD)	-	-
	230V/60Hz	-	Philippines	-	-	-
	240V/50Hz	Malaysia,Oman,UAE(ONE), Qatar,Kuwait	-	Malaysia	UAE (Local),Kuwait,Qatar	-
Rate Power Consumption (Wash / Spin)	220V/50Hz	390/200W	390/200W	390/230W	390/230W	390/200W
	220V/60Hz	-	420/190W	-	420/170W	-
	230V/60Hz	400/215W	440/200W	400/245W	440/180W	-
	240V/50Hz	420/234W	420/234W	420/270W	420/270W	-
Colour	Grey	Thailand,Vietnam,Fiji, Singapore (All),India,Malaysia	Philippines	Thailand,Vietnam,Fiji, Singapore (All),Malaysia	-	Indonesia
	White	Kuwait,Oman,UAE(All), Qatar,Libya	Saudi Arabia	-	Saudi Arabia,UAE (Local), Kuwait,Qatar,UAE (Export)	-
Outer Dimension	Body	545 mm. x 572 mm. x 904 mm.				
	Installation	583 mm. x 572 mm. x 950 mm.				
Water Supply Pressure	0.03 to 1 MPa (0.3 to 10 Kgf / cm <sup>2</sup> )					
Standard Water Consumption	137 Liter			155 Liter		
Standard Capacity	6.2 Kg			7.0 Kg		
Weight	29 Kg			30 Kg		

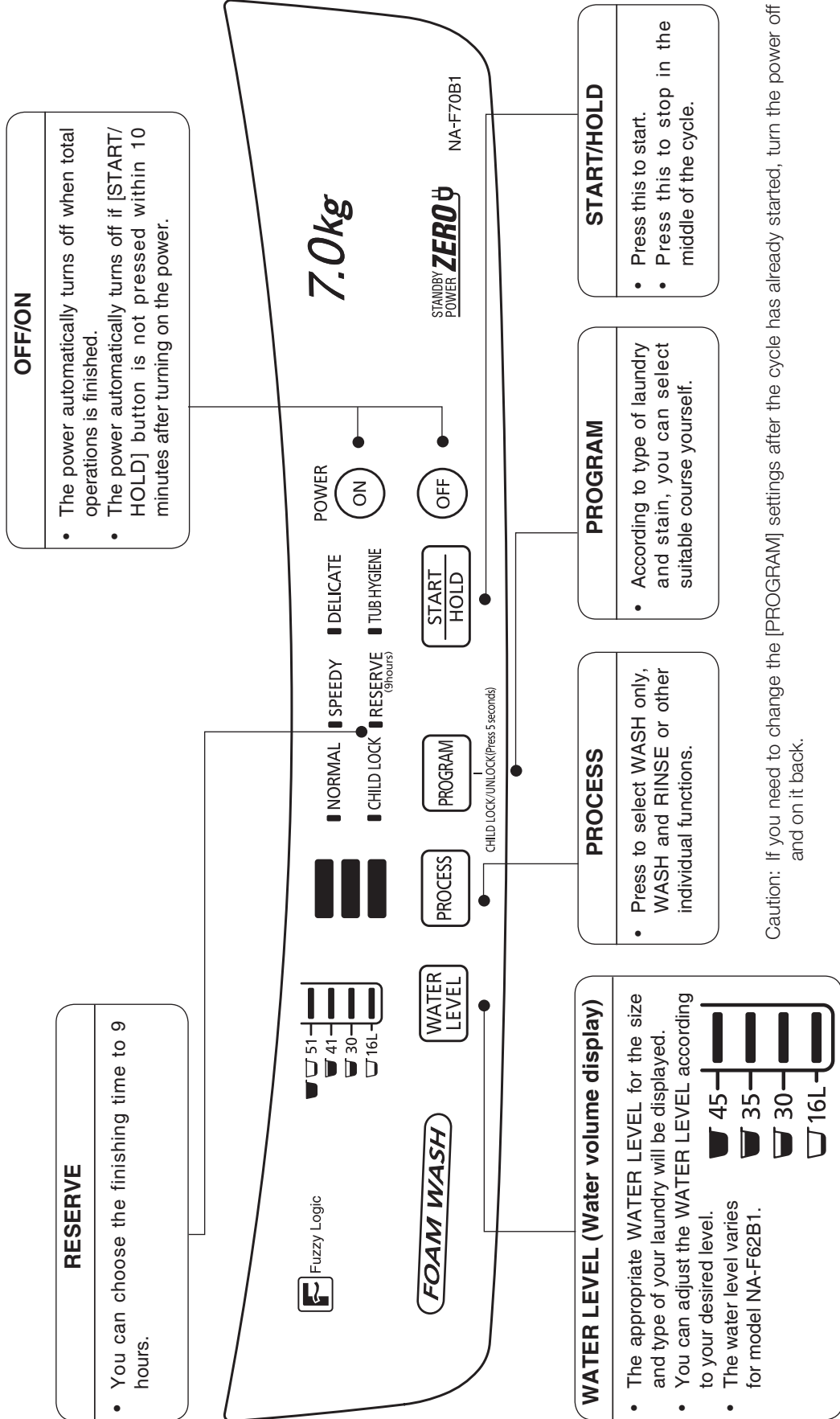
© 2008 Panasonic Home Appliances (Thailand) Co.,Ltd  
All rights reserved. Unauthorized copying  
and distribution is a violation of law

# OPERATIONS PANEL

## ■ MODEL NA-F62B1 / NA-F70B1



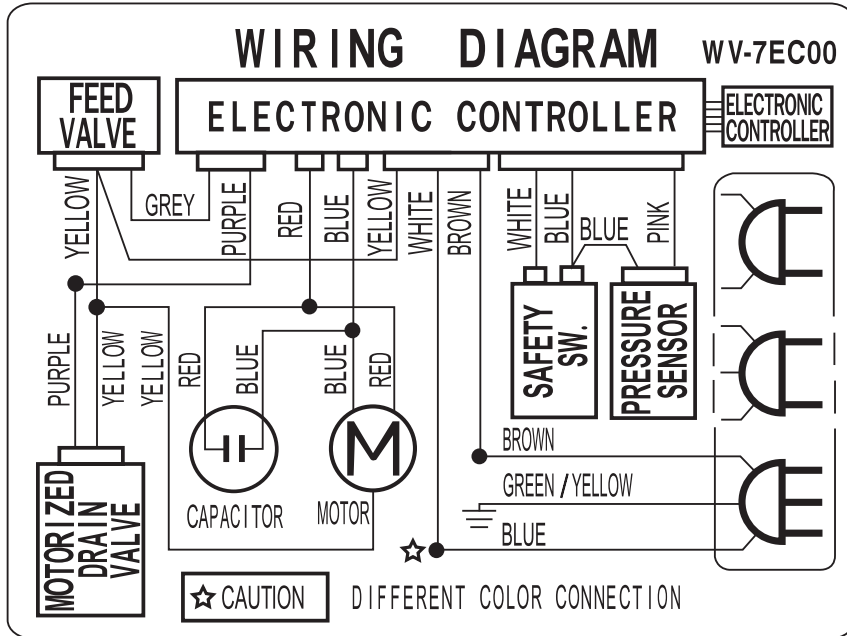
Fuzzy logic control is used to recommend the proper water level and amount of detergent for the amount of laundry being done.



Caution: If you need to change the [PROGRAM] settings after the cycle has already started, turn the power off and on it back.

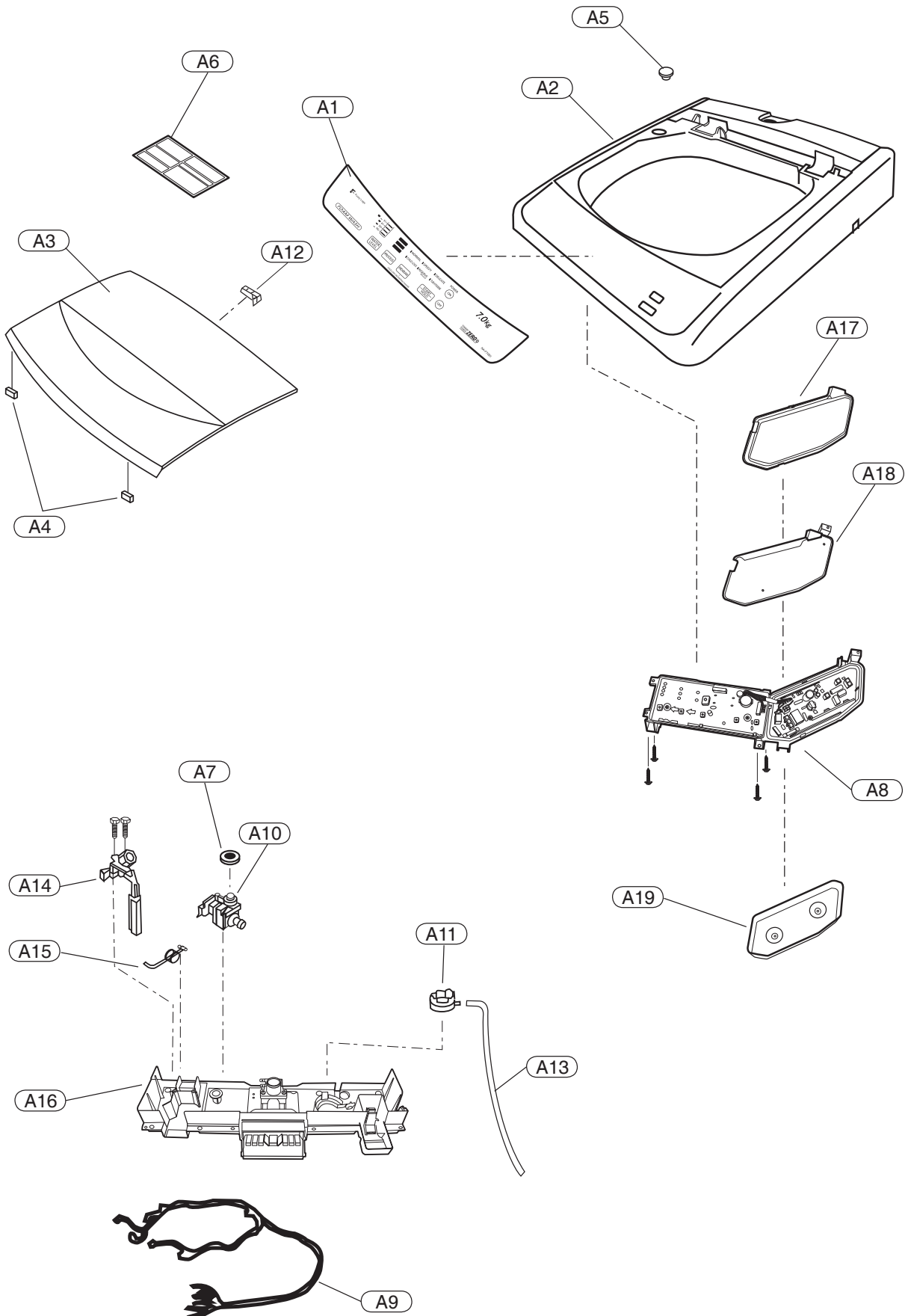
# WIRING DIAGRAM

■ MODEL NA-F62B1 / NA-F70B1



# LOCATION OF PARTS AND REPLACEMENT PARTS

## ■ Location of Parts - A NA-F62B1 / NA-F70B1



# REPLACEMENT PARTS LIST

## Important safety notice :

Components identified by mark have special characteristics important for safety. When replacing any of these components, use only manufacturer's specified part.

## Parts List - A of NA-F62B1 / NA-F70B1 / NA-F701B / NA-F801B

Ref. No.	Part Name	Part No.	Safety	Model				Country/Qty														Remark									
				F62B1	F70B1	F701B	F801B	TH	VIET	INDO	SIN-DBD	MAL	SIN-RBD	FJI	INDIA	LIBYA	UAE-ONE	OMAN	KUW	OAT	UAE-PGF										
A1	Panel Face B	AXW01467EC00		●				1																							
		AXW01467EC50		●						1			1	1	1	1	1	1	1	1	1	1	1	1	1	1	1	1			
		AXW01467EX00				●						1																			
		AXW01467ED00			●				1																						
		AXW01467ED50			●				1			1	1	1	1	1	1	1													
	AXW01467FL00					●			1																						
A2	Body B	AXW01027EC0J		●	●	●	●	1	1	1	1	1	1	1	1	1	1												Colour : Grey		
		AXW01027ECOD		●															1	1	1	1	1	1	1	1	1		Colour : White		
A3	Lid Unit	AXW001G7EC2J	S	●	●	●	●	1	1	1	1	1	1	1	1	1	1														
		AXW001G7EC2D	S	●	●														1	1	1	1	1	1	1	1	1				
A4	Lid Packing A	AXW01646UP00		●	●	●	●	2	2	2	2	2	2	2	2	2	2	2	2	2	2	2	2	2	2	2	2	2			
A5	Leveller	AXW03536DKA0		●	●	●	●		1	1	1	1	1	1	1	1	1	1	1	1	1	1	1	1	1	1	1	1			
	Cap C	AXW05377BR0J		●	●			1																							
A6	Spinner Lid Label	AXW11177BT0A		●	●			1																							
		AXW11177BS5A		●	●	●	●				1	1	1	1	1	1	1	1													
		AXW11177BS6D		●															1	1	1	1	1	1	1	1	1	1	1	1	1
		AXW11177BSKA		●	●				1																						
A7	Feeding Port Packing	AXW02676UP00		●	●	●	●	1	1	1	1	1	1	1	1	1	1	1	1	1	1	1	1	1	1	1	1	1	1	1	1
A8	Controller Unit	AXW024C7EC06	S	●		●		1	1	1	1	1	1	1	1	1	1	1	1	1	1	1	1	1	1	1	1	1	1	1	1
		AXW024C7ED06	S	●	●			1	1	1	1	1	1	1	1	1	1	1													
A9	Connector Lead Wire Unit	AXW014A7EC50	S	●	●	●	●	1	1	1	1	1	1	1	1	1	1	1	1	1	1	1	1	1	1	1	1	1	1	1	1
A10	Feeding Valve	AXW292119716	S	●	●	●	●	1	1	1	1	1	1	1	1	1	1	1	1	1	1	1	1	1	1	1	1	1	1	1	1
A11	Pressure Sensor Unit	AXW024T02900	S	●		●		1	1	1	1	1	1	1	1	1	1	1	1	1	1	1	1	1	1	1	1	1	1	1	1
		AXW024T02800	S		●		●	1	1	1	1	1	1	1	1	1	1														
A12	Lid Hinge Shaft	AXW01937BK00		●	●	●	●	1	1	1	1	1	1	1	1	1	1	1	1	1	1	1	1	1	1	1	1	1	1	1	1
A13	Sub Drain Hose Unit	AXW002Q6UP10		●		●		1	1	1	1	1	1	1	1	1	1	1	1	1	1	1	1	1	1	1	1	1	1	1	1
		AXW002Q6UT10			●		●	1	1	1	1	1	1	1	1	1	1														
A14	Safety Switch	AXW166123700	S	●	●	●	●	1	1	1	1	1	1	1	1	1	1	1	1	1	1	1	1	1	1	1	1	1	1	1	1
A15	Lid Hinge Spring	AXW11167BK00		●	●	●	●	1	1	1	1	1	1	1	1	1	1	1	1	1	1	1	1	1	1	1	1	1	1	1	1
A16	Panel A Back Cover	AXW01387EC00		●	●	●	●	1	1	1	1	1	1	1	1	1	1	1	1	1	1	1	1	1	1	1	1	1	1	1	1
A17	Controller Case Lid	AXW24277EC00		●	●	●	●	1	1	1	1	1	1	1	1	1	1	1	1	1	1	1	1	1	1	1	1	1	1	1	1
A18	Insulation Spacer A	AXW04867EC00		●	●	●	●	1	1	1	1	1	1	1	1	1	1	1	1	1	1	1	1	1	1	1	1	1	1	1	1
A19	Insulation Spacer B	AXW04877EC00		●	●	●	●	1	1	1	1	1	1	1	1	1	1	1	1	1	1	1	1	1	1	1	1	1	1	1	1

## Screws

Ref. No.	Part Name	Part No.	Safety	Model				Country/Qty														Remark											
				F62B1	F70B1	F701B	F801B	TH	VIET	INDO	SIN-DBD	MAL	SIN-RBD	FJI	INDIA	LIBYA	UAE-ONE	OMAN	KUW	OAT	UAE-PGF												
	Special Tapping Screw	XTWAXW469J		●	●	●	●	2	2	2	2	2	2	2	2	2	2	2	2	2	2	2	2	2	2	2	2	2	2	2	2	Body B-Body U	
	Binding Tapping Screw	XTB4+12CFJ		●	●	●	●	7	7	7	7	7	7	7	7	7	7	7	7	7	7	7	7	7	7	7	7	7	7	7	7	7	Panel A Back Cover
	Binding Tapping Screw	XTB4+15CFJ		●	●	●	●	2	2	2	2	2	2	2	2	2	2	2	2	2	2	2	2	2	2	2	2	2	2	2	2	2	Safety Sw.-Body B
		XTB4+15CFJ		●	●	●	●	2	2	2	2	2	2	2	2	2	2	2	2	2	2	2	2	2	2	2	2	2	2	2	2	2	Feeding Valve-Body B
		XTB4+15CFJ		●	●	●	●	1	1	1	1	1	1	1	1	1	1	1	1	1	1	1	1	1	1	1	1	1	1	1	1	1	Hose Holder A
		XTV3+10BFK		●	●	●	●	2	2	2	2	2	2	2	2	2	2	2	2	2	2	2	2	2	2	2	2	2	2	2	2	2	Controller Case Lid-Insulation Spacer A
		XTV3+10BFK		●	●	●	●	2	2	2	2	2	2	2	2	2	2	2	2	2	2	2	2	2	2	2	2	2	2	2	2	2	Controller Cover-Insulation Spacer B

## REPLACEMENT PARTS LIST

### Important safety notice :

Components identified by mark have special characteristics important for safety.  
When replacing any of these components, use only manufacturer's specified part.

### Parts List - A of NA-F62B1 / NA-F70B1 (Hz Free)

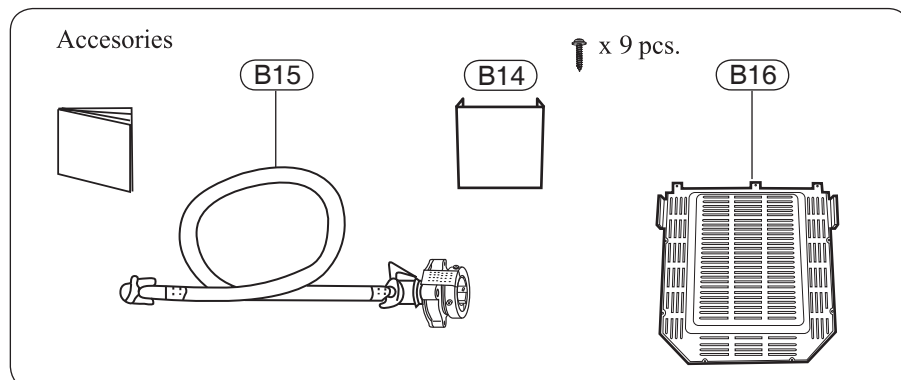
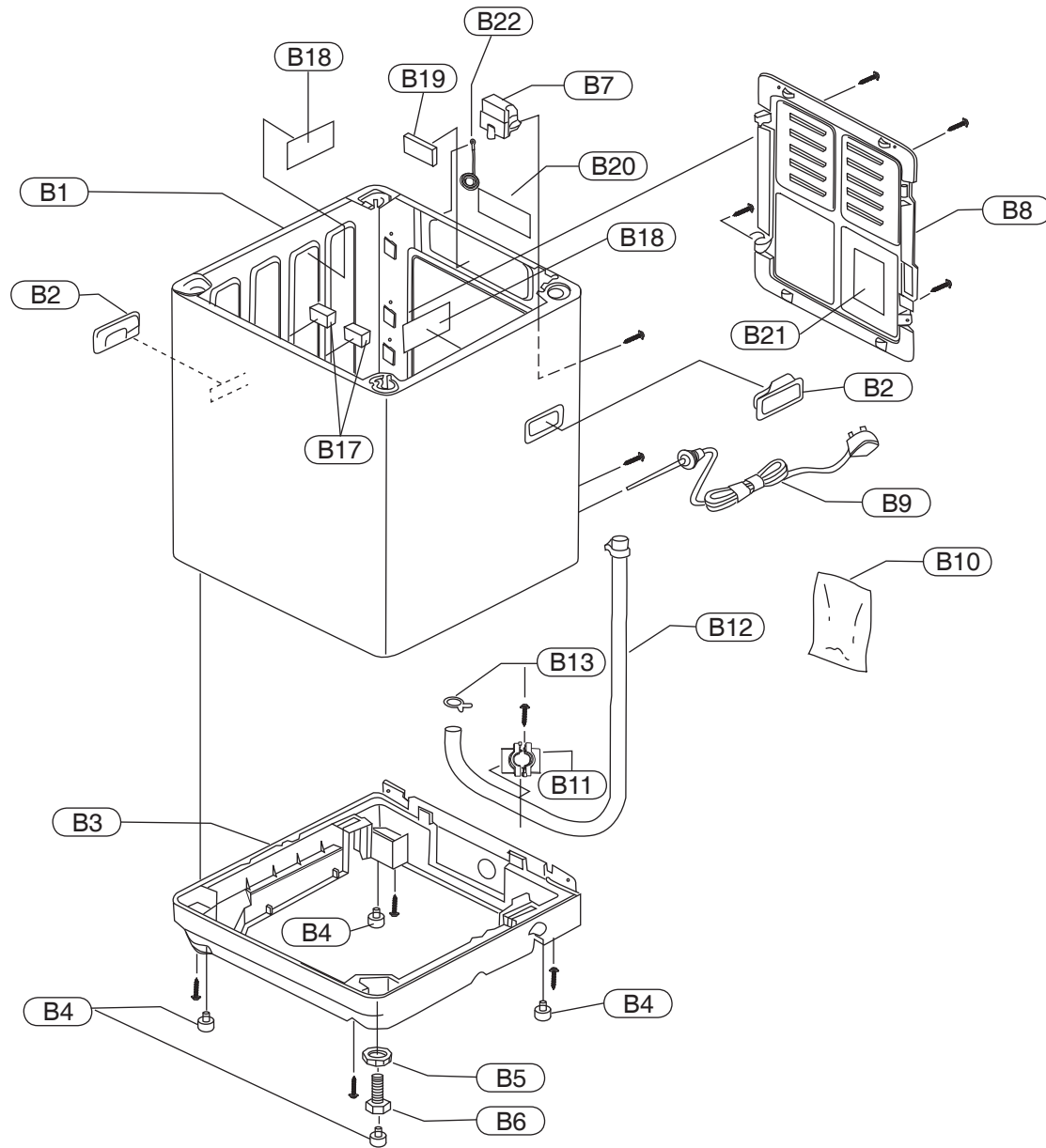
Ref. No.	Part Name	Part No.	Safety	Model		Country/Qty						Remark
				F62B1	F70B1	PHI	SAU	UAE-LOC	KUW	QAT	UAE-EXP	
A1	Panel Face B	AXW01467EC50		●		1	1					
		AXW01467ED50			●			1	1	1	1	
A2	Body B	AXW01027EC0J		●	●	1						Colour : Grey
		AXW01027EC0D		●	●		1	1	1	1	1	Colour : White
A3	Lid Unit	AXW001G7EC2J	S	●	●	1						
		AXW001G7EC2D	S	●	●		1	1	1	1	1	
A4	Lid Packing A	AXW01646UP00		●	●	2	2	2	2	2	2	
A5	Leveller	AXW03536DKA0		●	●	1	1	1	1	1	1	
A6	Spinner Lid Label	AXW11177BS5A		●		1						
		AXW11177BS6D		●	●		1	1	1	1	1	
A7	Feeding Port Packing	AXW02676UP00		●	●	1	1	1	1	1	1	
A8	Controller Unit	AXW024C7ECA6	S	●		1	1					
		AXW024C7EDA6	S		●		1	1	1	1	1	
A9	Connector Lead Wire Unit	AXW014A7EC50	S	●	●	1	1	1	1	1	1	
A10	Feeding Valve	AXW292119716	S	●	●	1	1	1	1	1	1	
A11	Pressure Sensor Unit	AXW024T02900	S	●		1	1					
		AXW024T02800	S		●		1	1	1	1	1	
A12	Lid Hinge Shaft	AXW01937BK00		●	●	1	1	1	1	1	1	
A13	Sub Drain Hose Unit	AXW002Q6UP10		●		1	1					
		AXW002Q6UT10			●		1	1	1	1	1	
A14	Safety Switch	AXW166123700	S	●	●	1	1	1	1	1	1	
A15	Lid Hinge Spring	AXW11167BK00		●	●	1	1	1	1	1	1	
A16	Panel A Back Cover	AXW01387EC00		●	●	1	1	1	1	1	1	
A17	Controller Case Lid	AXW24277EC00		●	●	1	1	1	1	1	1	
A18	Insulation Spacer A	AXW04867EC00		●	●	1	1	1	1	1	1	
A19	Insulation Spacer B	AXW04877EC00		●	●	1	1	1	1	1	1	

### Screws

Ref. No.	Part Name	Part No.	Safety	Model		Country/Qty						Remark
				F62B1	F70B1	PHI	SAU	UAE-LOC	KUW	QAT	UAE-EXP	
	Special Tapping Screw	XTWAXW469J		●	●	2	2	2	2	2	2	Body B~Body U
	Binding Tapping Screw	XTB4+12CFJ		●	●	7	7	7	7	7	7	Panel A Back Cover
	Binding Tapping Screw	XTB4+15CFJ		●	●	2	2	2	2	2	2	Safety Sw.~Body B
		XTB4+15CFJ		●	●	2	2	2	2	2	2	Feeding Valve~Body B
		XTB4+15CFJ		●	●	1	1	1	1	1	1	Hose Holder A
		XTV3+10BFB		●	●	2	2	2	2	2	2	Controller Case Lid~ Insulation Spacer A
		XTV3+10BFB		●	●	2	2	2	2	2	2	Controller Cover~ Insulation Spacer B

# LOCATION OF PARTS AND REPLACEMENT PARTS

## ■ Location of Parts - B NA-F62B1 / NA-F70B1



# REPLACEMENT PARTS LIST

## Important safety notice :

Components identified by mark have special characteristics important for safety.  
When replacing any of these components, use only manufacturer's specified part.

## Parts List - B of NA-F62B1 / NA-F70B1 / NA-F701B / NA-F801B

Ref. No.	Part Name	Part No.	Safety	Model				Country/Qty													Remark					
				F62B1	F70B1	F701B	F801B	TH	VIET	INDO	SIN-DBD	MAL	SIN-RBD	FIJI	INDIA	LIBYA	UAE-ONE	OMAN	KUW	QAT		UAE-PGF				
B1	Body A Unit	AXW001A7BR1J		●	●			1				1												Colour : Grey		
		AXW001A7BR6J		●	●	●	●		1	1					1	1										
		AXW001A7BR1D		●												1	1	1	1	1	1	1	1	1	Colour : White	
B2	Grip	AXW01106UP0J		●	●	●	●	2	2	2	2	2	2	2	2	2										
		AXW01106UP0D		●												2	2	2	2	2	2	2	2	2		
B3	Base A	AXW03017EC00		●	●	●	●	1	1	1	1	1	1	1	1	1	1	1	1	1	1	1	1			
B4	Leg Covering	AXW03396UP00		●	●	●	●	4	4	4	4	4	4	4	4	4	4	4	4	4	4	4	4			
B5	Adjustable Leg Thump	AXW03436JZ00		●	●	●	●	1	1	1	1	1	1	1	1	1	1	1	1	1	1	1	1			
B6	Adjustable Leg	AXW03357EC00		●	●	●	●	1	1	1	1	1	1	1	1	1	1	1	1	1	1	1	1			
B7	Capacitor	AXW04037P017	S	●		●		1	1	1	1	1	1	1	1	1	1	1	1	1	1	1	1			
		AXW04037P117	S		●		●	1	1	1	1	1	1	1	1	1	1									
B8	Back Panel	AXW01566ZV10		●	●	●	●	1	1	1	1	1	1	1	1	1	1	1	1	1	1	1	1			
B9	Power Cord Unit	AXW004A72944	S	●	●			1																Type : C3		
		AXW004A72914	S	●											1										Type : C2 + Earth	
		AXW004A73503	S		●									1											Type : B3P	
		AXW004A77254	S	●	●						1	1					1	1	1	1	1	1	1	1	Type : S3	
		AXW004A73014	S	●	●	●	●		1	1			1	1											Type : C2	
B10	Chemical Cover	AXW04487EC00		●	●	●	●	1	1	1	1	1	1	1	1	1	1	1	1	1	1	1	1			
B11	Hose Holder A	AXW01207EC00		●	●	●	●	2	2	2	2	2	2	2	2	2	2	2	2	2	2	2	2			
B12	Flexible Hose B Unit	AXW002E7EC00		●		●		1	1	1	1	1	1	1	1	1	1	1	1	1	1	1	1			
		AXW002E7ED00			●		●	1	1	1	1	1	1	1	1	1										
B13	Hose Band	AXW02457EC00		●	●	●	●	1	1	1	1	1	1	1	1	1	1	1	1	1	1	1	1			
B14	Hose Hole Cover A	AXW01287EC00		●	●	●	●	1	1	1	1	1	1	1	1	1	1	1	1	1	1	1	1			
B15	Service Pressure Hose Unit	AXW012D7BK00		●	●	●	●	1	1	1	1	1	1	1	1	1	1	1	1	1	1	1	1			
B16	Bottom Cover	AXW21587EC00		●	●	●	●	1	1	1	1	1	1	1	1	1	1	1	1	1	1	1	1			
B17	Body A Protection	AXW90466AA5M		●	●	●	●	2	2	2	2	2	2	2	2	2	2	2	2	2	2	2	2	Only NA-F62B1 use 1Pcs.		
B18	Body A Protection	AXW90466NTB0		●	●	●	●	2	2	2	2	2	2	2	2	2	2	2	2	2	2	2	2			
B19	Body A Protection	AXW90466FK20		●	●	●	●	1	1	1	1	1	1	1	1	1	1	1	1	1	1	1	1			
B20	Name Plate	AXW01537EC10	S	●				1																		
		AXW01537EC60	S	●							1	1	1		1	1	1	1	1	1	1	1	1			
		AXW01537ECB0	S	●							1			1												
		AXW01537ECG0	S	●					1																	
		AXW01537EX10	S			●				1																
		AXW01537ED10	S		●				1																	
		AXW01537ED60	S		●							1	1	1												
		AXW01537EDB0	S		●							1				1										
		AXW01537EDG0	S		●					1																
		AXW01537FL10	S				●				1															
B21	Wiring Diagram	AXW04707EC00		●	●	●	●	1	1	1	1	1	1	1	1	1	1	1	1	1	1	1	1			
		AXW04707ECK0		●	●				1																	
B22	Earth Wire Unit	AXW030C6SP20	S	●	●	●	●		1	1			1	1												

## Screws

Ref. No.	Part Name	Part No.	Safety	Model				Country/Qty													Remark			
				F62B1	F70B1	F701B	F801B	TH	VIET	INDO	SIN-DBD	MAL	SIN-RBD	FIJI	INDIA	LIBYA	UAE-ONE	OMAN	KUW	QAT		UAE-PGF		
	Pan Head Screw	XSN5+10BNS		●	●	●	●	1	1	1	1	1	1	1	1	1	1	1	1	1	1	1	1	Earth
	Special Tapping Screw	XTTAXW444J		●	●	●	●	4	4	4	4	4	4	4	4	4	4	4	4	4	4	4	4	Base A
	Special Tapping Screw	XTTAXW444J		●	●	●	●	4	4	4	4	4	4	4	4	4	4	4	4	4	4	4	4	Back Panel
	Bind Tapping Screw	XTB4+15CFJ		●	●	●	●	1	1	1	1	1	1	1	1	1	1	1	1	1	1	1	1	Hose Holder A
	Pan Head Tapping Screw	XTN4+8HFJ		●	●	●	●	1	1	1	1	1	1	1	1	1	1	1	1	1	1	1	1	Earth U-Body A
	Bind Tapping Screw	XYNAXW438J		●	●	●	●	1	1	1	1	1	1	1	1	1	1	1	1	1	1	1	1	Capacitor



## REPLACEMENT PARTS LIST

### Important safety notice :

Components identified by mark have special characteristics important for safety.  
When replacing any of these components, use only manufacturer's specified part.

### Parts List - B of NA-F62B1 / NA-F70B1 (Hz Free)

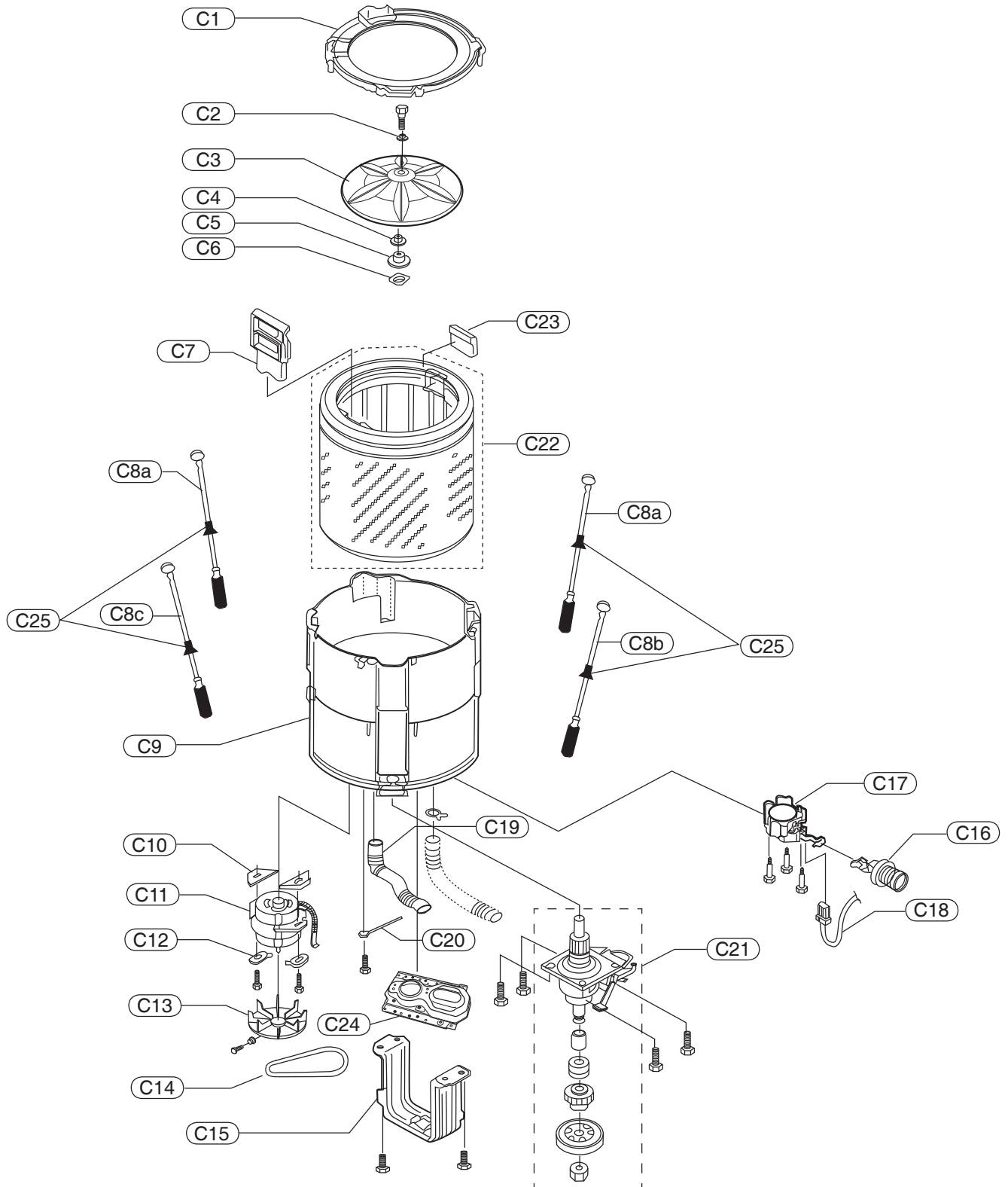
Ref. No.	Part Name	Part No.	Safety	Model		Country/Qty						Remark
				F62B1	F70B1	PHI	SAU	UAE-LOC	KUW	QAT	UAE-EXP	
B1	Body A Unit	AXW001A7BR6J		●		1						Colour : Grey
		AXW001A7BR1D		●	●		1	1	1	1	1	Colour : White
B2	Grip	AXW01106UP0J		●	●	2						Colour : Grey
		AXW01106UP0D		●			2	2	2	2	2	Colour : White
B3	Base A	AXW03017EC00		●	●	1	1	1	1	1	1	
B4	Leg Covering	AXW03396UP00		●	●	4	4	4	4	4	4	
B5	Adjustable Leg Thump	AXW03436JZ00		●	●	1	1	1	1	1	1	
B6	Adjustable Leg	AXW03357EC00		●	●	1	1	1	1	1	1	
B7	Capacitor	AXW04037P017	S	●		1	1					
		AXW04037P117	S		●		1	1	1	1	1	
B8	Back Panel	AXW01566ZV10		●	●	1	1	1	1	1	1	
B9	Power Cord Unit	AXW004A83400	S	●		1						Type : A2
		AXW004A77254	S		●			1	1	1		Type : S3
		AXW004A72914	S	●	●						1	Type : C2 + Earth
		AXW004A78605	S	●	●		1					Type : S3 ( 1.0 mm. <sup>2</sup> )
B10	Chemical Cover	AXW04487EC00		●	●	1	1	1	1	1	1	
B11	Hose Holder A	AXW01207EC00		●	●	2	2	2	2	2	2	
B12	Flexible Hose B Unit	AXW002E7EC00		●		1	1					
		AXW002E7ED00			●		1	1	1	1	1	
B13	Hose Band	AXW02457EC00		●	●	1	1	1	1	1	1	
B14	Hose Hole Cover A	AXW01287EC00		●	●	1	1	1	1	1	1	
B15	Service Pressure Hose Unit	AXW012D7BK00		●	●	1	1	1	1	1	1	
B16	Bottom Cover	AXW21587EC00		●	●	1	1	1	1	1	1	
B17	Body A Protection	AXW90466AA5M		●	●	2	2	2	2	2	2	Only NA-F62B1 use 1Pcs.
B18	Body A Protection	AXW90466NTB0		●	●	2	2	2	2	2	2	
B19	Body A Protection	AXW90466FK20		●	●	1	1	1	1	1	1	
B20	Name Plate	AXW01537HS10	S	●		1	1					
		AXW01537HT10	S		●		1	1	1	1	1	
B21	Wiring Diagram	AXW04707EC00		●	●	1	1	1	1	1	1	
B22	Earth Wire Unit	AXW030C6SP20	S	●	●	1	1					

### Screws

Ref. No.	Part Name	Part No.	Safety	Model		Country/Qty						Remark
				F62B1	F70B1	PHI	SAU	UAE-LOC	KUW	QAT	UAE-EXP	
	Pan Head Screw	XSN5+10BNS		●	●	1	1	1	1	1	1	Earth
	Special Tapping Screw	XTTAXW444J		●	●	4	4	4	4	4	4	Base A
	Special Tapping Screw	XTTAXW444J		●	●	4	4	4	4	4	4	Back Panel
	Bind Tapping Screw	XTB4+15CFJ		●	●	1	1	1	1	1	1	Hose Holder A
	Pan Head Tapping Screw	XTN4+8HFJ		●	●	1	1	1	1	1	1	Earth U-Body A
	Bind Tapping Screw	XYNAXW438J		●	●	1	1	1	1	1	1	Capacitor

# LOCATION OF PARTS AND REPLACEMENT PARTS

## ■ Location of Parts - C NA-F62B1 / NA-F70B1



# REPLACEMENT PARTS LIST

## Important safety notice :

Components identified by mark have special characteristics important for safety.  
When replacing any of these components, use only manufacturer's specified part.

## Parts List - C of NA-F62B1 / NA-F70B1 / NA-F701B / NA-F801B

Ref. No.	Part Name	Part No.	Safety	Model				Country/Qty													Remark				
				F62B1	F70B1	F701B	F801B	TH	VIET	INDO	SIN-DBD	MAL	SIN-RBD	FIJI	INDIA	LIBYA	UAE-ONE	OMAN	KUW	OAT		UAE-PGF			
C1	Outer Tub Cover	AXW32246MC0M		●	●	●	●	1	1	1	1	1	1	1	1	1	1	1	1	1	1	1	1	1	
C2	O-Ring	AXW02577BK00		●	●	●	●	1	1	1	1	1	1	1	1	1	1	1	1	1	1	1	1	1	
C3	Pulsator Unit	AXW005E6UR00		●	●	●	●	1	1	1	1	1	1	1	1	1	1	1	1	1	1	1	1	1	
C4	Shaft Bushing	AXW05046ZR00		●	●	●	●	1	1	1	1	1	1	1	1	1	1	1	1	1	1	1	1	1	
C5	Spinner Shaft Flange Nut	AXW15176RU00		●	●	●	●	1	1	1	1	1	1	1	1	1	1	1	1	1	1	1	1	1	
C6	Spinner Flange Washer B	AXW151990200		●	●	●	●	1	1	1	1	1	1	1	1	1	1	1	1	1	1	1	1	1	
C7	Filter U	AXW022A6RU10		●	●	●	●	1	1	1	1	1	1	1	1	1	1	1	1	1	1	1	1	1	
C8a	Suspension Unit (R-RL)	AXW034U7EC00		●		●		2	2	2	2	2	2	2	2	2	2	2	2	2	2	2	2	2	Rear : Right & Left
C8b	Suspension Unit (F-R)	AXW034U7EC50		●				1	1	1	1	1	1	1	1	1	1	1	1	1	1	1	1	1	Front : Right
C8c	Suspension Unit (F-L)	AXW034U7ECA0		●		●		1	1	1	1	1	1	1	1	1	1	1	1	1	1	1	1	1	Front : Left
C8aa	Suspension Unit (R-RL)	AXW034U7ED00			●		●	2	2	2	2	2	2	2	2	2	2	2	2	2	2	2	2	2	Rear : Right & Left
C8bb	Suspension Unit (F-R)	AXW034U7ED50			●		●	1	1	1	1	1	1	1	1	1	1	1	1	1	1	1	1	1	Front : Right
C8cc	Suspension Unit (F-L)	AXW034U7EDA0			●		●	1	1	1	1	1	1	1	1	1	1	1	1	1	1	1	1	1	Front : Left
C9	Outer Tub A	AXW12016MC1M		●		●		1	1	1	1	1	1	1	1	1	1	1	1	1	1	1	1	1	
		AXW12016NK10			●		●	1	1	1	1	1	1	1	1	1	1	1	1	1	1	1	1	1	
C10	Motor Washer A	AXW04207BK00		●	●	●	●	2	2	2	2	2	2	2	2	2	2	2	2	2	2	2	2	2	
C11	Motor	AXW040157806	S	●		●		1	1	1	1	1	1	1	1	1	1	1	1	1	1	1	1	1	
		AXW040157906	S		●		●	1	1	1	1	1	1	1	1	1	1	1	1	1	1	1	1	1	
C12	Motor Washer B	AXW04217BK00		●	●	●	●	2	2	2	2	2	2	2	2	2	2	2	2	2	2	2	2	2	
C13	Motor Pulley	AXW04116ZV00		●		●		1	1	1	1	1	1	1	1	1	1	1	1	1	1	1	1	1	
		AXW04117ED00			●		●	1	1	1	1	1	1	1	1	1	1	1	1	1	1	1	1	1	
C14	V-Belt	AXW041219860		●		●		1	1	1	1	1	1	1	1	1	1	1	1	1	1	1	1	1	
		AXW04127BL60			●		●	1	1	1	1	1	1	1	1	1	1	1	1	1	1	1	1	1	
C15	Spinner Plate B	AXW32326ZV00		●	●	●	●	1	1	1	1	1	1	1	1	1	1	1	1	1	1	1	1	1	
C16	Valve Unit	AXW009D6ZV00		●	●	●	●	1	1	1	1	1	1	1	1	1	1	1	1	1	1	1	1	1	
C17	Geared Motor	AXW348201006	S	●	●	●	●	1	1	1	1	1	1	1	1	1	1	1	1	1	1	1	1	1	
C18	Lead wire Unit	AXW014B6UP00	S	●	●	●	●	1	1	1	1	1	1	1	1	1	1	1	1	1	1	1	1	1	
C19	Over Flow Hose B	AXW02346UP0A		●	●	●	●	1	1	1	1	1	1	1	1	1	1	1	1	1	1	1	1	1	
C20	Earth Wire Unit (Internal)	AXW003F6UP00	S	●	●	●	●	1	1	1	1	1	1	1	1	1	1	1	1	1	1	1	1	1	
C21	Mecha-Case Unit	AXW020A6UP5C		●	●	●	●	1	1	1	1	1	1	1	1	1	1	1	1	1	1	1	1	1	
C22	Tub Unit	AXW002A7EC00		●		●		1	1	1	1	1	1	1	1	1	1	1	1	1	1	1	1	1	
		AXW002A7ED00			●		●	1	1	1	1	1	1	1	1	1	1	1	1	1	1	1	1	1	
C23	Rinse Case	AXW21715WP0D		●	●	●	●	1	1	1	1	1	1	1	1	1	1	1	1	1	1	1	1	1	
C24	Outer Tub B	AXW12026ZV00		●		●		1	1	1	1	1	1	1	1	1	1	1	1	1	1	1	1	1	t = 1.4 mm.
		AXW12026JZ20			●		●	1	1	1	1	1	1	1	1	1	1	1	1	1	1	1	1	1	t = 1.6 mm.

## Screws

Ref. No.	Part Name	Part No.	Safety	Model				Country/Qty													Remark					
				F62B1	F70B1	F701B	F801B	TH	VIET	INDO	SIN-DBD	MAL	SIN-RBD	FIJI	INDIA	LIBYA	UAE-ONE	OMAN	KUW	OAT		UAE-PGF				
	Special Tapping Screw	XTWAXW518		●	●	●	●	8	8	8	8	8	8	8	8	8	8	8	8	8	8	8	8	8	Tub A-Tub D	
				●	●	●	●	6	6	6	6	6	6	6	6	6	6	6	6	6	6	6	6	6	6	Spinner Shaft Flange
	Pan Head Tapping Screw	XTN4+8HFJ		●	●	●	●	1	1	1	1	1	1	1	1	1	1	1	1	1	1	1	1	1	Earth U-Body A	
	Special Small Screw	XSSAXW682		●	●	●	●	1	1	1	1	1	1	1	1	1	1	1	1	1	1	1	1	1	Pulsator Unit	
	Special Bolt	XVGAXW703J		●	●	●	●	1	1	1	1	1	1	1	1	1	1	1	1	1	1	1	1	1	Motor Pulley	
		XVGAXW839J		●	●	●	●	2	2	2	2	2	2	2	2	2	2	2	2	2	2	2	2	2	Motor	
		XVGAXW812J		●	●	●	●	4	4	4	4	4	4	4	4	4	4	4	4	4	4	4	4	4	4	Mecha-case-Outer Tub B
		XTWAXW682J		●	●	●	●	2	2	2	2	2	2	2	2	2	2	2	2	2	2	2	2	2	2	Spinner Plate B
	Special Tapping Screw	XTWAXW6517J		●	●	●	●	6	6	6	6	6	6	6	6	6	6	6	6	6	6	6	6	6	Outer Tub A,B	
		XTWAXW6518J		●	●	●	●	3	3	3	3	3	3	3	3	3	3	3	3	3	3	3	3	3	3	Geared Motor
		XTWAXW531		●	●	●	●	2	2	2	2	2	2	2	2	2	2	2	2	2	2	2	2	2	2	Outer Tub A,B-Center

## REPLACEMENT PARTS LIST

### Important safety notice :

Components identified by mark have special characteristics important for safety.  
When replacing any of these components, use only manufacturer's specified part.

### Parts List - C of NA-F62B1 / NA-F70B1 (Hz Free)

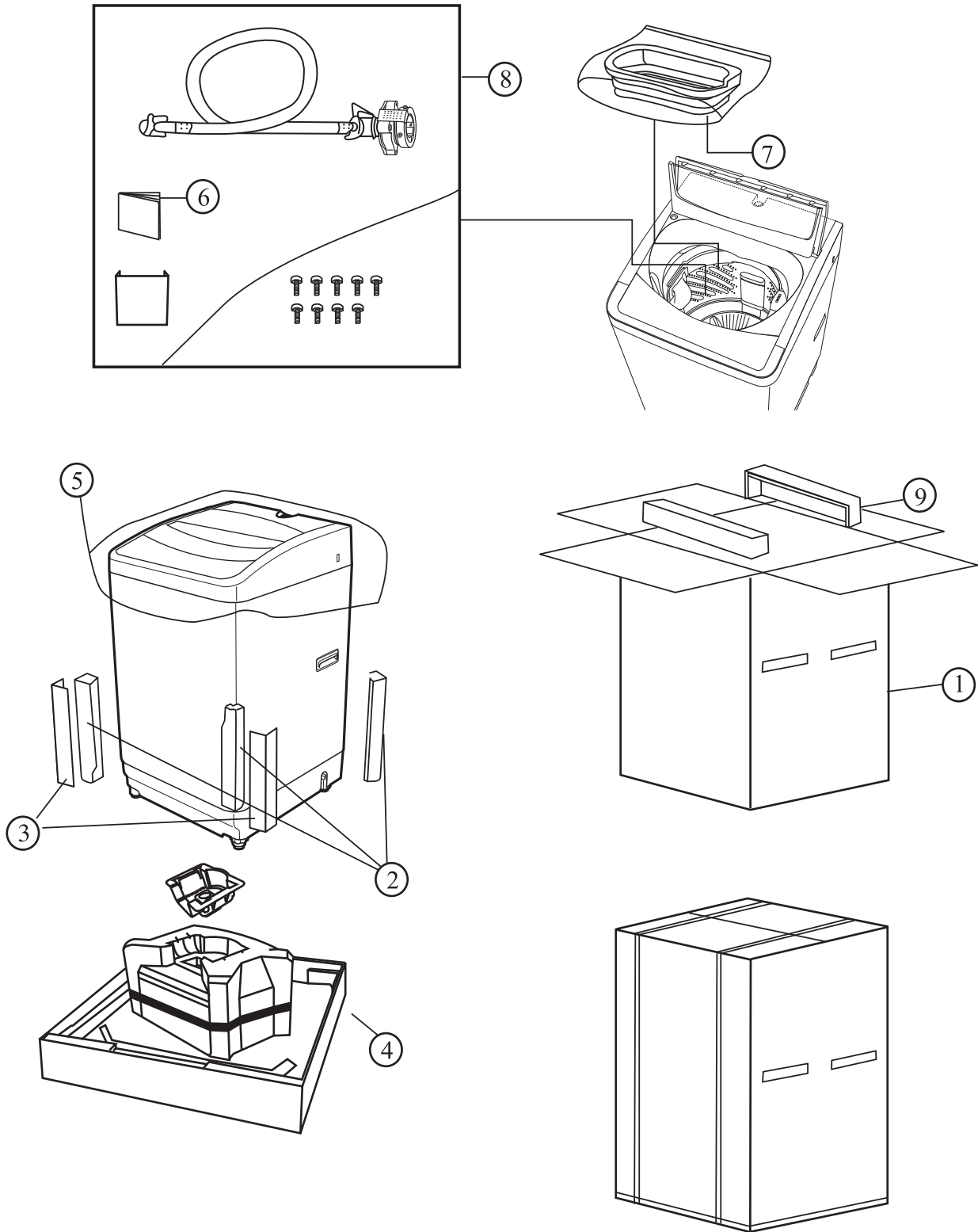
Ref. No.	Part Name	Part No.	Safety	Model		Country/Qty						Remark
				F62B1	F70B1	PHI	SAU	UAE-LOC	KUW	QAT	UAE-EXP	
C1	Outer Tub Cover	AXW32246MC0M		●	●	1	1	1	1	1	1	
C2	O-Ring	AXW02577BK00		●	●	1	1	1	1	1	1	
C3	Pulsator Unit	AXW005E6UR00		●	●	1	1	1	1	1	1	
C4	Shaft Bushing	AXW05046ZR00		●	●	1	1	1	1	1	1	
C5	Spinner Shaft Flange Nut	AXW15176RU00		●	●	1	1	1	1	1	1	
C6	Spinner Flange Washer B	AXW151990200		●	●	1	1	1	1	1	1	
C7	Filter U	AXW022A6RU10		●	●	1	1	1	1	1	1	
C8a	Suspension Unit (R-RL)	AXW034U7EC00		●		2	2					Rear : Right & Left
C8b	Suspension Unit (F-R)	AXW034U7EC50		●		1	1					Front : Right
C8c	Suspension Unit (F-L)	AXW034U7ECA0		●		1	1					Front : Left
C8aa	Suspension Unit (R-RL)	AXW034U7ED00			●		2	2	2	2	2	Rear : Right & Left
C8bb	Suspension Unit (F-R)	AXW034U7ED50			●		1	1	1	1	1	Front : Right
C8cc	Suspension Unit (F-L)	AXW034U7EDA0			●		1	1	1	1	1	Front : Left
C9	Outer Tub A	AXW12016MC1M		●		1	1					
		AXW12016NK10			●			1	1	1	1	
C10	Motor Washer A	AXW04207BK00		●	●	2	2	2	2	2	2	
C11	Motor	AXW040157806	S	●		1	1					
		AXW040157906	S		●		1	1	1	1	1	
C12	Motor Washer B	AXW04217BK00		●	●	2	2	2	2	2	2	
C13	Motor Pulley	AXW04116ZV00		●		1	1					
		AXW04117ED00			●		1	1	1	1	1	
C14	V-Belt	AXW041219860		●		1	1					
		AXW04127BL60			●		1	1	1	1	1	
C15	Spinner Plate B	AXW32326ZV00		●	●	1	1	1	1	1	1	
C16	Valve Unit	AXW009D6ZV00		●	●	1	1	1	1	1	1	
C17	Geared Motor	AXW348201006	S	●	●	1	1	1	1	1	1	
C18	Lead wire Unit	AXW014B6UP00	S	●	●	1	1	1	1	1	1	
C19	Over Flow Hose B	AXW02346UP0A		●	●	1	1	1	1	1	1	
C20	Earth Wire Unit	AXW003F6UP00	S	●	●	1	1	1	1	1	1	
C21	Mecha-Case Unit	AXW020A6UP5C		●	●	1	1	1	1	1	1	
C22	Tub Unit	AXW002A7EC00		●		1	1					
		AXW002A7ED00			●		1	1	1	1	1	
C23	Rinse Case	AXW21715WP0D		●	●	1	1	1	1	1	1	
C24	Outer Tub B	AXW12026ZV00		●		1	1					t = 1.4 mm.
		AXW12026JZ20			●		1	1	1	1	1	t = 1.6 mm.

### Screws

Ref. No.	Part Name	Part No.	Safety	Model		Country/Qty						Remark
				F62B1	F70B1	PHI	SAU	UAE-LOC	KUW	QAT	UAE-EXP	
	Special Tapping Screw	XTWAXW518		●	●	8	8	8	8	8	8	Tub A~-Tub D
				●	●	6	6	6	6	6	6	Spinner Shaft Flange
	Pan Head Tapping Screw	XTN4+8HFJ		●	●	1	1	1	1	1	1	Earth U~-Body A
	Special Small Screw	XSSAXW682		●	●	1	1	1	1	1	1	Pulsator Unit
	Special Bolt	XVGAXW703J		●	●	1	1	1	1	1	1	Motor Pulley
		XVGAXW839J		●	●	2	2	2	2	2	2	Motor
		XVGAXW812J		●	●	4	4	4	4	4	4	Mecha-case~Outer Tub B
		XTWAXW682J		●	●	2	2	2	2	2	2	Spinner Plate B
	Special Tapping Screw	XTWAXW6517J		●	●	6	6	6	6	6	6	Outer Tub A,B
		XTWAXW6518J		●	●	3	3	3	3	3	3	Geared Motor
		XTWAXW531		●	●	2	2	2	2	2	2	Outer Tub A,B~-Center

# LOCATION OF PARTS AND REPLACEMENT PARTS

## ■ Location of Packing Part NA-F62B1 / NA-F70B1



# REPLACEMENT PARTS LIST

## Important safety notice :

Components identified by mark have special characteristics important for safety. When replacing any of these components, use only manufacturer's specified part.

## Parts List - Packing of NA-F62B1 / NA-F70B1 / NA-F701B / NA-F801B

Ref. No.	Part Name	Part No.	Safety	Model				Country/Qty														Remark					
				F62B1	F70B1	F701B	F801B	TH	VIET	INDO	SIN-DBD	MAL	SIN-RBD	FIJI	INDIA	LIBYA	UAE-ONE	OMAN	KUW	QAT	UAE-PGF						
1	Protection Case A	AXW90017EC00		●	●			1																			
		AXW90017EC60		●	●																						
		AXW90017EC10		●	●						1	1	1	1	1	1	1	1	1	1	1	1	1	1	1	1	1
2	Corner Cushion	AXW90156UP20		●	●	●	●	1	1	1	1	1	1	1	1	1	1	1	1	1	1	1	1	1	1	1	FRONT SIDE
		AXW90156UP60		●	●	●	●	1	1	1	1	1	1	1	1	1	1	1	1	1	1	1	1	1	1	1	BACK SIDE
3	Corner Pad	AXW90166ZV00		●	●	●	●	2	2	2	2	2	2	2	2	2	2	2	2	2	2	2	2	2	2	2	
4	Protection Case B Unit	AXW090B7EC50		●				1																			
		AXW090B7EC70		●		●		1	1	1	1	1	1	1	1	1	1	1	1	1	1	1	1	1	1	1	
		AXW090B7ED00			●		●	1	1	1	1	1	1	1	1	1	1	1	1	1	1	1	1	1	1	1	
5	Polyethylene Cover	AXW90606UP20		●	●	●	●	1	1	1	1	1	1	1	1	1	1	1	1	1	1	1	1	1	1	1	
6	Operating Instruction	AXW99017EC10		●	●			1																			
		AXW99017HT10		●	●							1	1	1	1	1											
		AXW99017HS10		●	●											1	1	1	1	1	1	1	1	1	1	1	
		AXW99017ECG0		●	●					1																	
7	Spin Tub Supporter	AXW90857EC00		●	●	●	●	1	1	1	1	1	1	1	1	1	1	1	1	1	1	1	1	1	1	1	
		AXW90576UP20		●	●	●	●	1	1	1	1	1	1	1	1	1	1	1	1	1	1	1	1	1	1	1	1
8	Accessory Bag	AXW90047EC00		●	●	●	●	1	1	1	1	1	1	1	1	1	1	1	1	1	1	1	1	1	1	1	
9	Body Cover	AXW90047EC00		●	●	●	●	1	1	1	1	1	1	1	1	1	1	1	1	1	1	1	1	1	1	1	

## REPLACEMENT PARTS LIST

### Important safety notice :

Components identified by mark have special characteristics important for safety.  
When replacing any of these components, use only manufacturer's specified part.

### Parts List - Packing of NA-F62B1 / NA-F70B1 (Hz Free)

Ref. No.	Part Name	Part No.	Safety	Model		Country/Qty						Remark
				F62B1	F70B1	PHI	SAU	UAE-LOC	KUW	QAT	UAE-EXP	
1	Protection Case A	AXW90017EC60		●	●	1	1	1	1	1	1	
2	Corner Cushion	AXW90156UP20		●	●	1	1	1	1	1	1	Front Side
		AXW90156UP60		●	●	1	1	1	1	1	1	Back Side
3	Corner Pad	AXW90166ZV00		●	●	2	2	2	2	2	2	
4	Protection Case B Unit	AXW090B7EC70		●		1	1					
		AXW090B7ED70			●		1	1	1	1	1	
5	Polyethylene Cover	AXW90606UP20		●	●	1	1	1	1	1	1	
6	Operating Instruction	AXW99017HT10		●		1						
		AXW99017HS10		●	●		1	1	1	1	1	
7	Spin Tub Supporter	AXW90857EC00		●	●	1	1	1	1	1	1	
8	Accessory Bag	AXW90576UP20		●	●	1	1	1	1	1	1	
9	Body Cover	AXW90047EC00		●	●	1	1	1	1	1	1	