

Service Manual

Fully Automatic Washing Machine



NA-F60G2T
NA-F60G2E
NA-F70G2E
NA-F70G2N
NA-F70G2X
Export



NA-F60G2T
NA-F60G2E
NA-F70G2E

NA-F70G2X
NA-F70G2N

⚠ WARNING

This service information is designed for experienced repair technicians only and is not designed for use by the general public. It does not contain warnings or cautions to advise non-technical individuals of potential dangers in attempting to service a product. Products powered by electricity should be serviced or repaired only by experienced professional technicians. Any attempt to service or repair the product or products dealt with in this service information by anyone else could result in serious injury or death.

IMPORTANT SAFETY NOTICE

There are special components used in this equipment which are important for safety. These parts are marked by ⚠ in the Schematic Diagrams, Circuit Board Diagrams, Exploded Views and Replacement Parts List. It is essential that these critical parts should be replaced with manufacturer's specified parts to prevent shock, fire or other hazards. Do not modify the original design without permission of manufacturer.

Specification

Model		NA-F70G2E	NA-F70G2N	NA-F70G2X	NA-F60G2E	NA-F60G2T
Rate Voltage and Frequency	220V/50Hz	-	UAE/PGF	UAE/PGF	Singapore (Ex)	UAE/PGF
	230V/50Hz	Singapore (IEC)	Singapore (IEC)	Singapore (IEC)	Singapore (IEC)	-
	230V/60Hz	-	-	Philippines	Philippines	-
	240V/50Hz	Malaysia	Malaysia,Middle East	Malaysia,Middle East	Malaysia,Middle East	Middle East
Rate Power Consumption	220V/50Hz	435	435	435	410	410
	230V/50Hz	435	435	435	410	410
	230V/60Hz	435	435	435	410	410
	240V/50Hz	435	435	435	410	410
Standard Water Consumption	155 Liter	155 Liter	155 Liter	137 Liter	137 Liter	
Standard Capacity	7 Kg	7 Kg	7 Kg	6 Kg	6 Kg	
Water Supply Pressure	0.03 to 1Mpa (0.3 to 10 kgf/cm ²)					
Outer Dimension	572 mm X 583 mm X 982 mm					
Weight	33 Kg	33 Kg	33 Kg	30 Kg	30 Kg	

Panasonic®

© 2002 Matsushita Home Appliance (Thailand) Co.,Ltd
 All rights reserved. Unauthorized copying
 and distribution is a violation of law

Contents

	Page
1. Specification.....	3
2. Features and Technical Information.....	4
3. Installation.....	7
4. Operations Panel.....	9
5. Wiring Diagram.....	12
6. Table of Errors.....	13
7. Troubleshooting.....	14
8. Location of Parts and Replacement Parts List.....	16 -25

Usage : For repairs and change of spare part only for washing machine type
Panasonic Model NA-F60G2E/NA-F60G2T/NA-F70G2E/NA-F70G2N
NA-F70G2X

Instruction for Usage : The work repair and changing of spare part should be operated
by a skilled technician from the distribution agents, or Panasonic's
standard service center.

Warning : Switch off electrical power before commencing work to avoid a potential
short circuit or injury.

1. Specifications

NA-F60G2E / NA-F60G2T

Voltage (AC)	220 V/50Hz : Indonesia,UAE(PGF),Jordan Singapore (Ex)		
	230 V/50Hz : Singapore (IEC)		
	230 V/60Hz : Philippines		
	240 V/50Hz : Malaysia,middle East, UAE (ONE)		
External Dimension	Width	Depth	Height
	583 mm	572 mm	982 mm
Water Consumption (Normal Program)	137 liter		
Water Pressure	0.3-10 Kg.f/cm ² (8-25 liter/min)		
Pulsator (r.p.m)	132 r/min		
Spin Tub (r.p.m)	867 r/min		
Machine Weight	30 Kg		
Colour	Grey , White		

Motor Power	Input 320 Watts	Output 410 Watts
Safety Switch	Checking unbalance/ tub lid	
Alarm	Rings when finish washing or unusual	
Thermoprotector	Motor	
Water Inlet Hole	o	
Fabric softener dispenser	o	
Filter	o	
Automatic power-cut switch	o	
Accessories	Inlet pipe (1.2 m) Tab joint Drain pipe (80 cm) Rat -prevention screen	

NA-F70G2E/NA-F70G2N / NA-F70G2X

Voltage (AC)	220 V/50Hz : Indonesia,UAE(PGF),Jordan Singapore (Ex)		
	230 V/50Hz : Singapore (IEC)		
	230 V/60Hz : Philippines		
	240 V/50Hz : Malaysia,middle East, UAE (ONE)		
External Dimension	Width	Depth	Height
	583 mm	572 mm	982 mm
Water Consumption (Normal Program)	155 liter		
Water Pressure	0.3-10 Kg.f/cm ² (8-25 liter/min)		
Pulsator (r.p.m)	130 r/min		
Spin Tub (r.p.m)	897 r/min		
Machine Weight	33 Kg		
Colour	Grey , White , Silver		

Motor Power	Input 320 Watts	Output 435 Watts
Safety Switch	Checking unbalance/ tub lid	
Alarm	Rings when finish washing or unusual	
Thermoprotector	Motor	
Water Inlet Hole	o	
Fabric softener dispenser	o	
Bleach dispenser	o	
Filter	o	
Automatic power-cut switch	o	
Accessories	Inlet pipe (1.2 m.) Tab joint Drain pipe (80 cm.) Rat prevention screen	

Standard Water Consumption

Model NA-F60G2E / NA-F60G2T

Wash Level	Water	Clothes Weight	
High	53 liters	6.0 Kg	45 liters
Medium	39 liters	3.0 Kg	35 liters
Low	32 liters	1.5 Kg	30 liters
Extra - Low	18 liters	0.5 Kg	16 liters

Model NA-F70G2E

Wash Level	Water	Clothes Weight	
High	56 liters	7.0 Kg	51 liters
Medium	45 liters	3.5 Kg	41 liters
Low	32 liters	1.5 Kg	30 liters
Extra - Low	18 liters	0.5 Kg	16 liters

Standard Water Consumption

Model NA-F70G2N/NA-F70G2X

Wash Level	Water	Clothes Weight	
High	56liters	7.0 Kg	51 liters
<High Lower>	53 liters	5.0 Kg	48 liters
Medium	45 liters	3.5 Kg	41 liters
<Medium Lower>	41 liters	2.7 Kg	38 liters
Low 1	35 liters	2.0 Kg	33 liters
<Lower 1 Lower>	32 liters	1.5 Kg	30 liters
Low 2	25 liters	1.0 Kg	24 liters
<Lower 2 Lower>	22 liters	0.7 Kg	21 liters
Low 3	18 liters	0.5 Kg	18 liters
<Lower 3 Lower>	16 liters	0.3 Kg	16 liters

2. Features and Technical Information

Model NA-F60G2E / NA-F60G2T

Program	Time
Normal	approx. 40-59 min
Delicate	approx. 23 min
Speedy	approx. 37-53 min
Tub Dry	approx. 36 min
Soak 1 hour	approx. 61 min
Soak 1 hours	approx. 179 min
Soak 1 hours	approx. 471 min

Product special features

Pre-wash weigh sensor
 Dial indicating detergent level after sensing wash level
 Pre-set timer
 Fabric softener dispenser
 Detergent dispenser
 Automatic power-off when finish
 Dial indicating unusual sign (LED will blink)
 Overflow sensing device
 Dial indicating time remaining

Model NA-F70G2N/NA-F70G2X

Program	Time
Normal	approx. 46-60 min
Mini	approx. 15 min
Speedy	approx. 37-53 min
Blanket	approx. 47-55 min
Delicate	approx. 23 min
Tub Dry	approx. 36 min
Soak 1 hour	approx. 61 min
Soak 3 hour	approx. 179 min
Soak 8 hour	approx. 471 min

Product special features

Dial indicating detergent level after sensing wash level
 Pre-set timer
 Fabric softener dispenser
 Detergent dispenser
 Automatic power-off when finish
 Dial indicating unusual sign (LED will blink)
 Alarm ON-OFF
 Overflow sensing device

Model NA-F70G2E

Program	Time
Normal	approx. 40-59 min
Delicate	approx. 24-29 min
Speedy	approx. 21-37 min
Tub Dry	approx. 36 min
Soak 1 hour	approx. 100-119 min
Soak 1 hours	approx. 219-238 min
Soak 1 hours	approx. 511-530 min

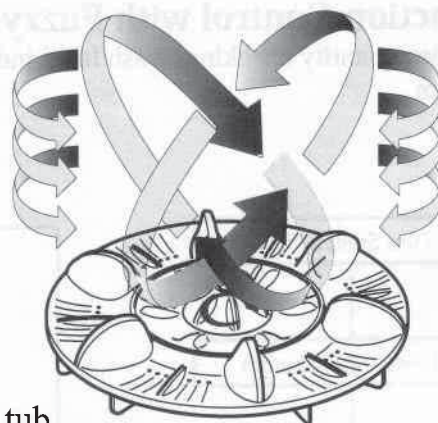
2. Features and Technical Information

■ New Age Washing Machine

Triple Pulsator

NA-F70G2N/NA-F70G2X

Three powerful waves are generated by the Triple Pulsator System rendering an effective cleaning wash.



Tub Dry

30-Minute spinning system prevents fungi inside the tub

Super Cleaning Plus

This system operates with low wash level in the first 2 minutes so that clothes are cleaner with concentrated detergent.

Double Cross Cascade

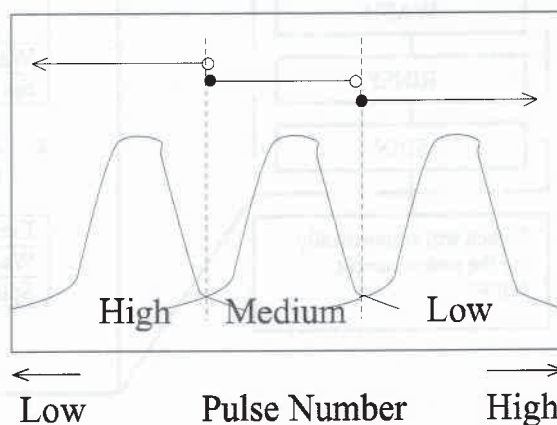
NA-F70G2E/NA-F70G2N/NA-F70G2X

Powerful double cross cascade makes water swirl in a downward vortex better than in old-fashioned machines. With the Pulsator System, the cascade helps to dissolve detergent quickly to make clothes cleaner.



Weight Sensor

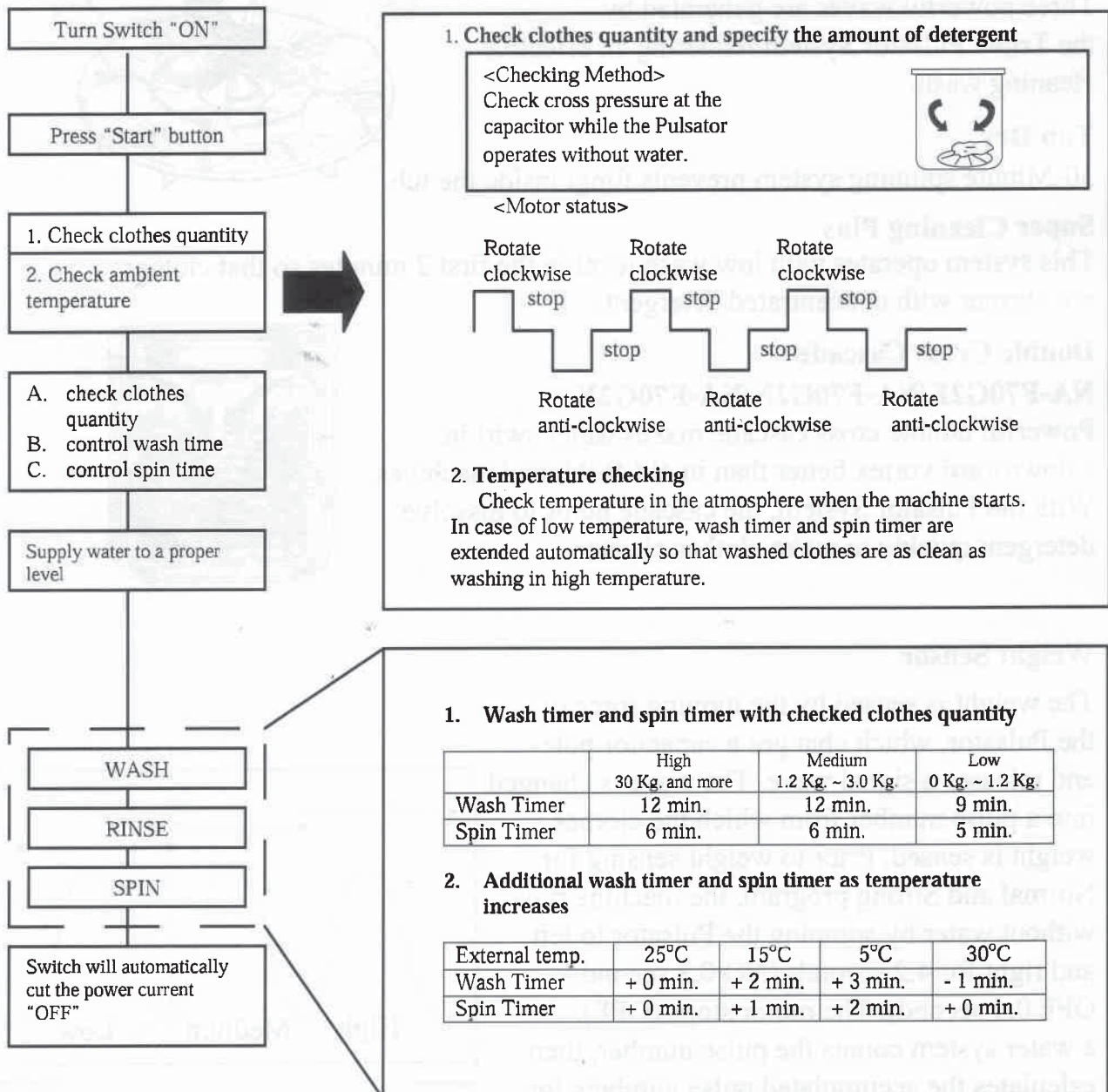
The weight is sensed by the moving force of the Pulsator, which changes a capacitor pole and releases a signal wave. The wave is changed into a pulse number from which the clothes weight is sensed. Prior to weight sensing for Normal and Strong program, the machine runs without water by spinning the Pulsator to left and right for 4.2 seconds (NO 0.3 second - OFF 0.4 second). The motor stops (OFF), a water system counts the pulse number, then calculates the accumulated pulse numbers for drawing water into the tub over a defined level. The dial will indicate High wash level.



2. Features and Technical Information

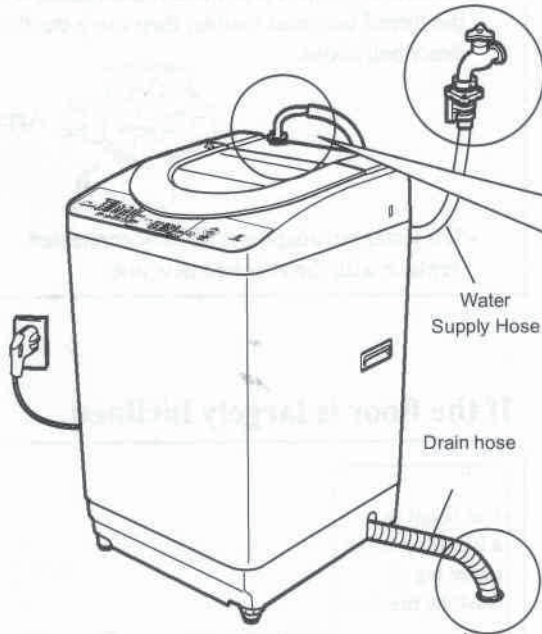
Function Control with Fuzzy sensor

Clothes quantity checking, wash level indication and detergent consumption indication with Fussy Logic system

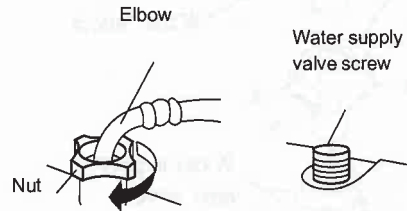


3. Installation

3.1 Checking of Placement



Connect the water supply hose to the water supply valve screw.



1. Push the water supply hose nut straight onto the water supply valve screw.
2. Hold the elbow by lifting it up, screw the nut onto the water supply valve screw, and firmly tighten the nut.
3. After the nut is tightened, check whether or not the elbow is unsteady or loose.
4. After tightening, open the faucet to confirm that there is no water leakage.

[Cautions]

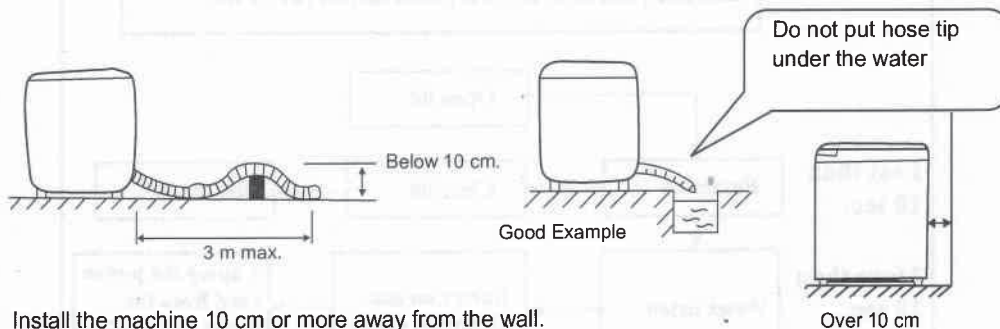
Firmly tighten the nut, otherwise water leakage will result.

Water Pressure Rating :

$2.9 \times 10^4 \sim 9.8 \times 10^5 \text{ Pa}$

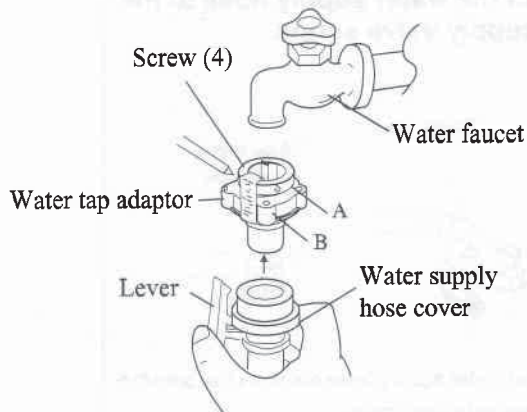
Hose extension

If extended external part is necessary when connecting the drain hose, the length of the drain hose should be less than 3 m and the height should be below 10 cm.



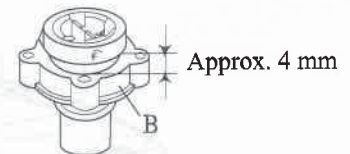
3. Installation

3.2 Connect the water supply hose



[Note]

- Firmly tighten part B of the water tap adaptor, otherwise water leakage will result.
- When the hose must be reinstalled (after you remove, for example), turn B to the left until about 4 mm of the thread becomes visible, then carry out the procedure described above.

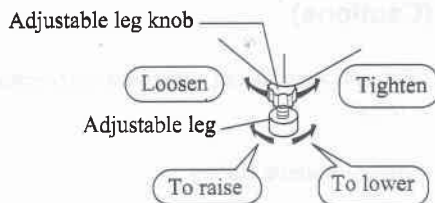


- If a water tap adaptor is already connected, replace with the attached new one.

3.3 Install Washing Machine to steady

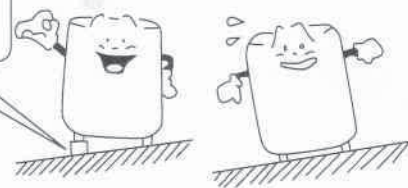
Adjust Height of leg

1. Turn the adjustable leg knob towards (Loosen) direction to loose it.
2. Turn the adjustable leg to adjust the levelness.
 - 2.1 When increasing height, turn adjustable leg towards (Loosen) direction.
 - 2.2 When decreasing height, turn adjustable leg towards (Tighten) direction.
3. Turn the adjustable leg knob towards (Tighten) direction to tighten it.

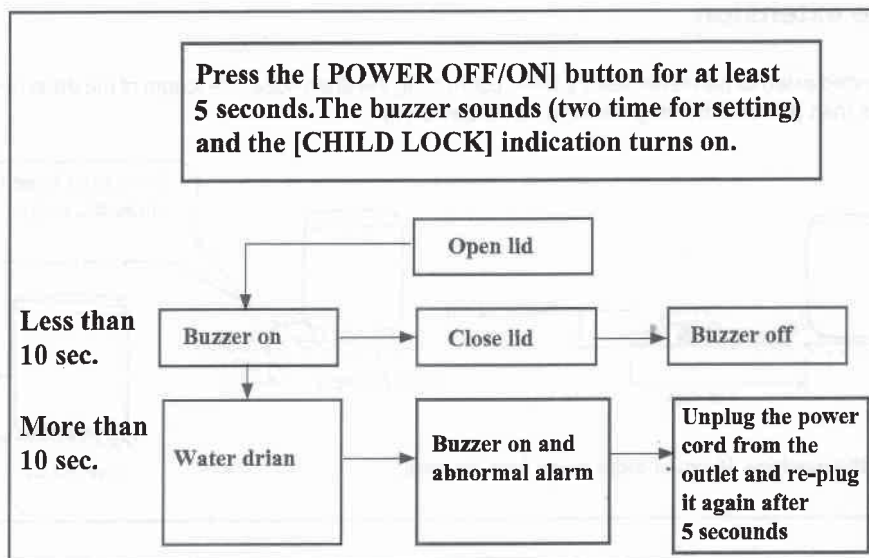


If the floor is largely inclined

Use board or a like for prop up under leg of washing machine

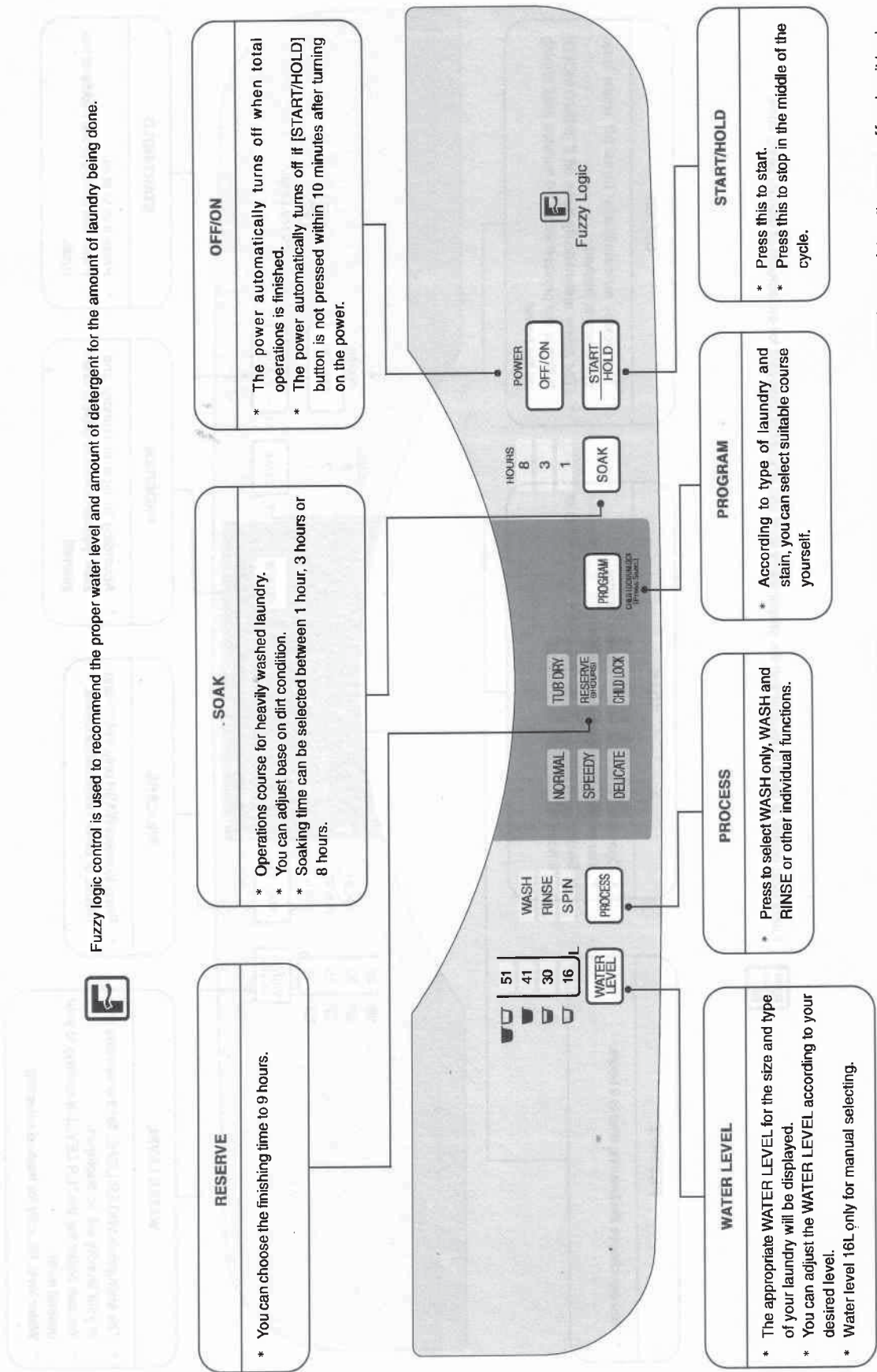


3.4 CHILD LOCK Program



4. Operations Panel

4.1 Model NA-F70G2E

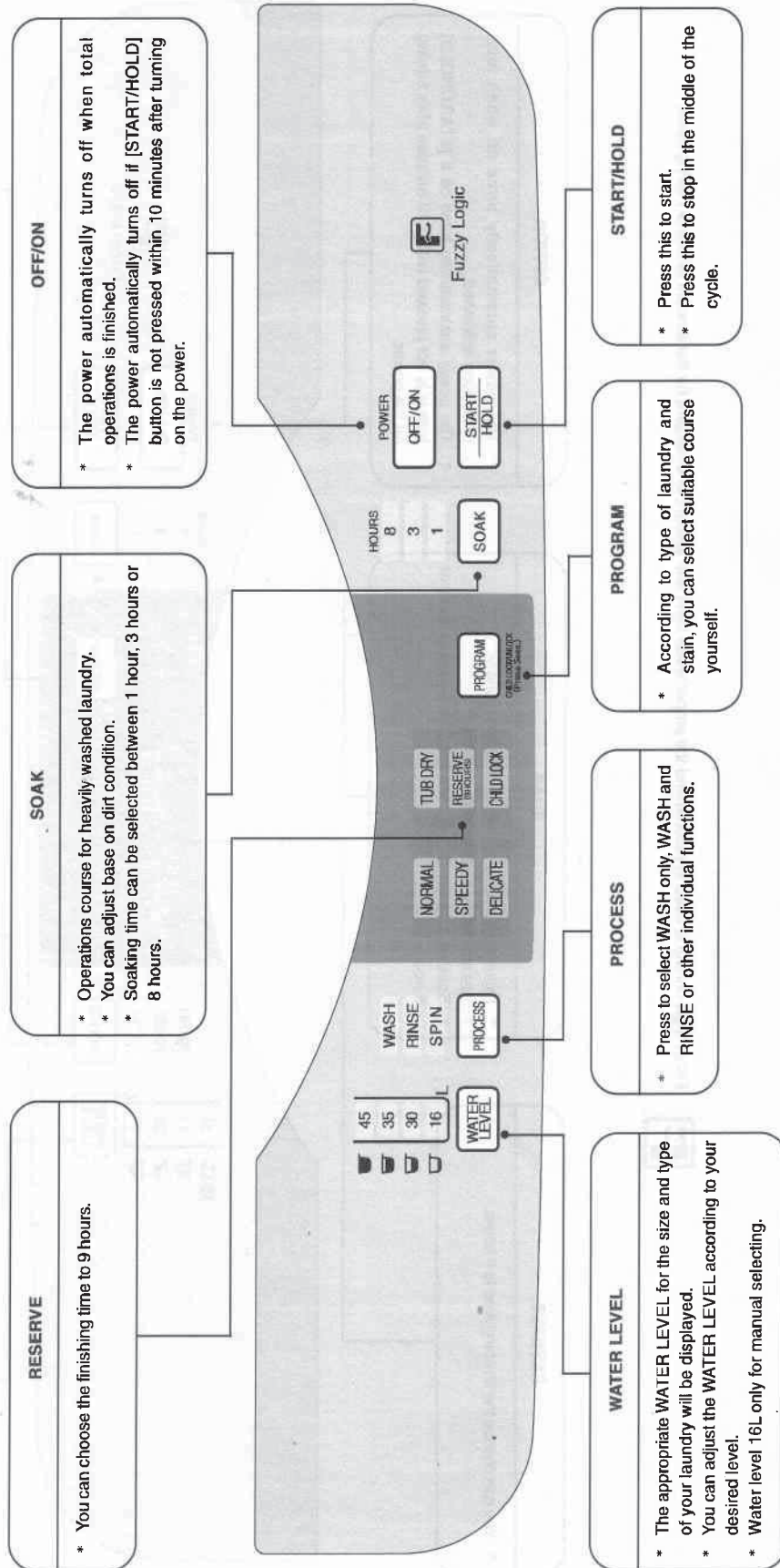


Caution: if you need to change the [PROGRAM] and [SOAK] settings after the cycle has already started, turn the power off and on it back.

4. Operations Panel

4.2 Model NA-F60G2E/NA-F60G2T

Fuzzy logic control is used to recommend the proper water level and amount of detergent for the amount of laundry being done.

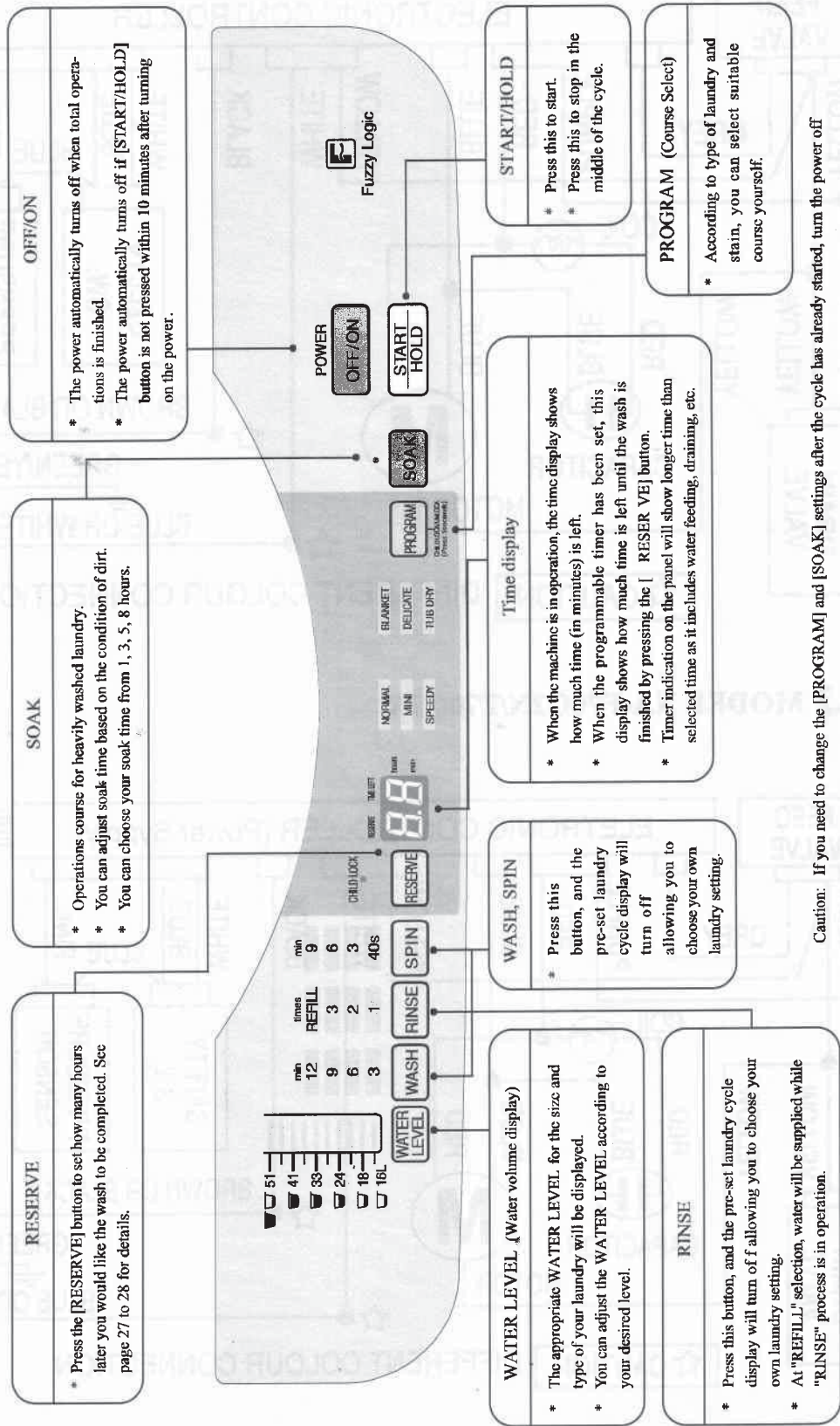


Caution: If you need to change the [PROGRAM] and [SOAK] settings after the cycle has already started, turn the power off and on it back.

4. Operations Panel

4.3 Model F70G2N/NA-F70G2X

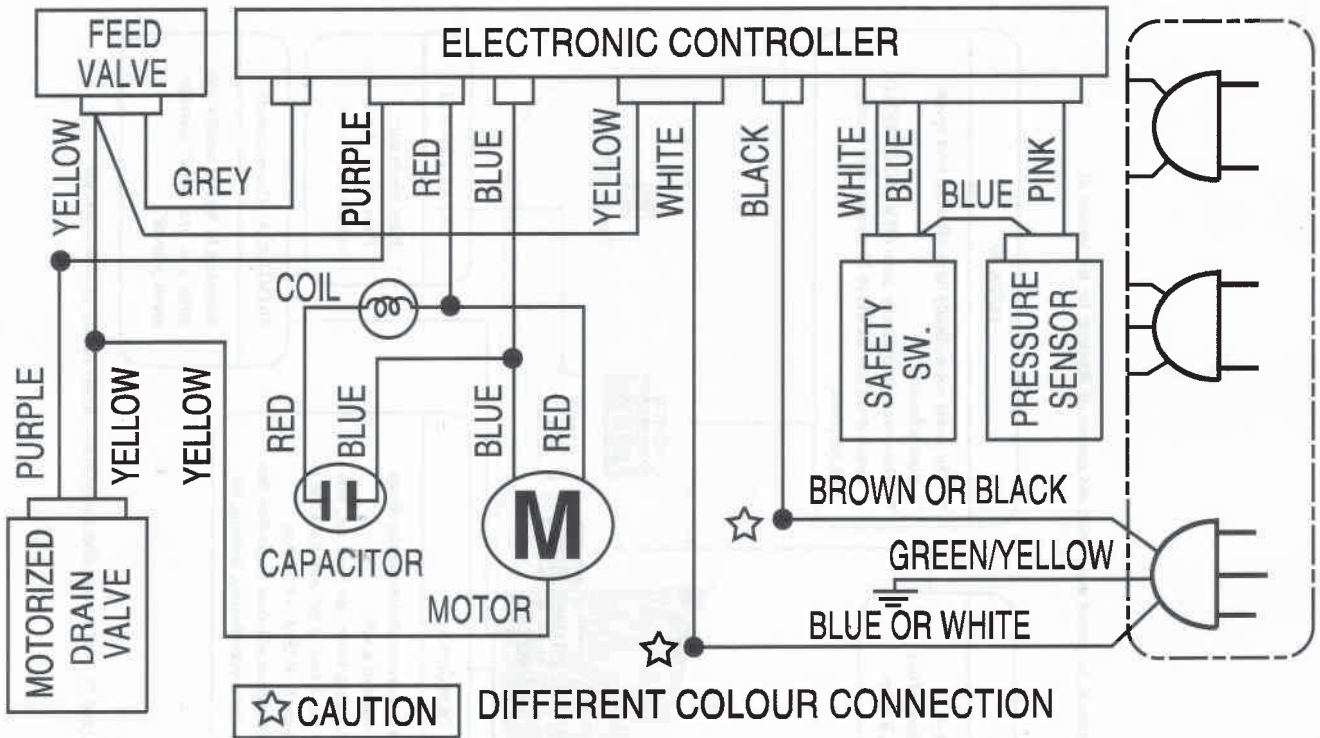
Fuzzy logic control is used to recommend the proper water level and amount of detergent for the amount of laundry being done.



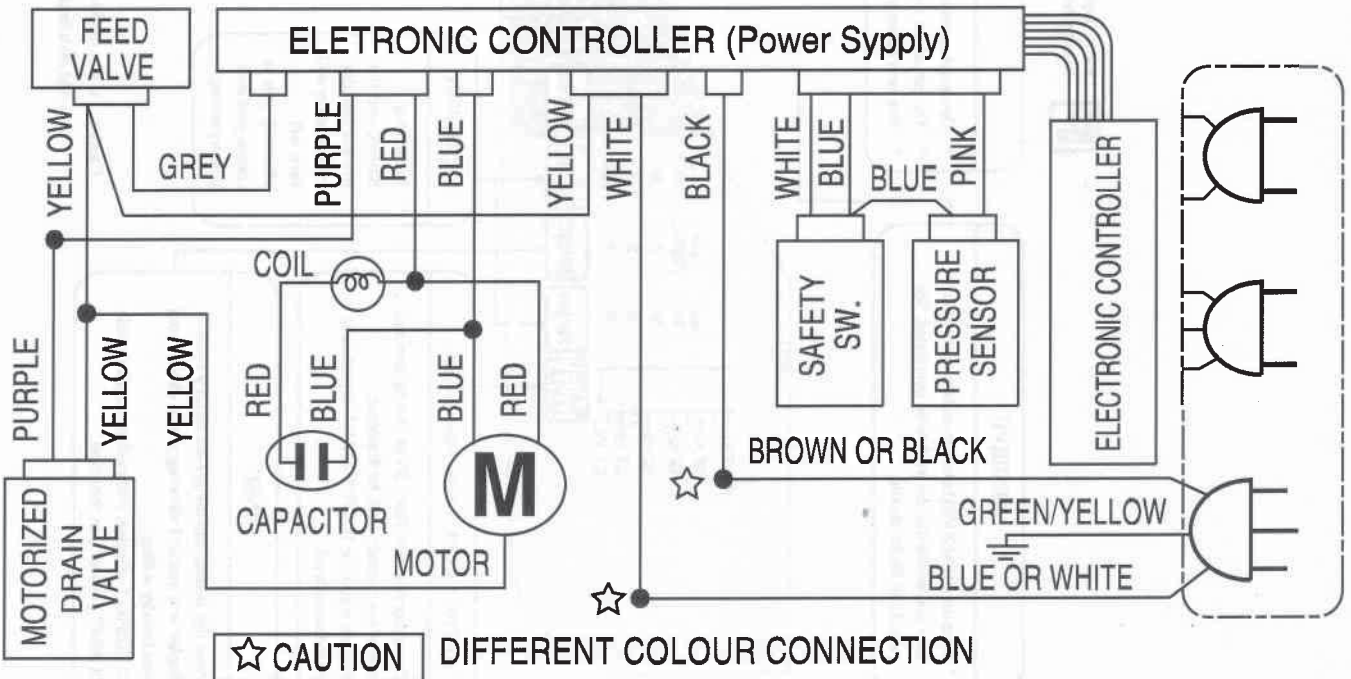
Caution: If you need to change the [PROGRAM] and [SOAK] settings after the cycle has already started, turn the power off and on it back.

5. WIRING DIAGRAM

5.1 MODEL NA-F60G2E/F60G2T/F70G2E



5.2 MODEL NA-F70G2N/F70G2X



6. TABLE OF ERRORS

Case of buzzer alarm



Flashing

● Lit

○ Not Lit

<ul style="list-style-type: none"> ✱ WASH ✱ RINSE + ● RESERVE ✱ SPIN 	<ul style="list-style-type: none"> ■ Check if abnormalities listed below are seen in the external water hose. <ul style="list-style-type: none"> ● Is the hose connected? ● Is it clogged with lint? ● Is it crushed? ● Is the tip soaked in water? ● Is a small pipe used? ● Is a part of hose at a height of over 10 cm midway? ● Is the extension hose longer than 3m? ● Is the hose lay down? <p style="text-align: right;">} After open and close of the lid. Operation will restart.</p>
<ul style="list-style-type: none"> ✱ WASH ✱ RINSE + ● SPEEDY ✱ SPIN 	<ul style="list-style-type: none"> ● Check if the lid is opened. → Close the lid.
<ul style="list-style-type: none"> ✱ WASH ✱ RINSE + ● TUB DRY ✱ SPIN 	<ul style="list-style-type: none"> ● Is the laundry unbalanced? → Even it out. ● The machine is rattling. Is it inclined toward the floor? ● Is the adjustable knob loose? ● (Adjust the machine so it does not jiggle, then tighten the adjustable knob.)
<ul style="list-style-type: none"> ✱ WASH ✱ RINSE + ● DELICATE ✱ SPIN 	<ul style="list-style-type: none"> ● Check if you have forgotten to connect the water hose and to turn on the faucet. ● Check if the connection of the water supply hose is clogged with dirt. Please refer to "Maintenance" (Water supply hose filter) ● Check if the water supply failure.
<ul style="list-style-type: none"> ✱ WASH ✱ RINSE + ● CHILD LOCK ✱ SPIN 	<ul style="list-style-type: none"> ● Check if the lid open more than 10 seconds after start of water feeding. ● [CHILD LOCK] mode will activated to force the water drain. ● Pull out power plug from the socket outlet and replug it after 5 seconds. ● Please refer to "[CHILD LOCK] program".
<p>DETERGENT VOLUME</p> <ul style="list-style-type: none"> ☐ ✱ 45 ✱ WASH ☐ ✱ 35 ✱ RINSE ☐ ✱ 30 ✱ SPIN ☐ ✱ 16L 	<ul style="list-style-type: none"> ● The buzzer does not sound. ● Pull out the power plug and request for service.

7. TROUBLESHOOTING

7.1 Table of Troubleshooting

Problem (have to check)		Corresponding device								Others
		Control panel	Water Inlet Valve	Water level sensor	Safety switch	Gear motor	Capacitor	Mechanism case	Holding spring	
Machine doesn't work	No light at the dial	0								
	Dial light is on	0	0							
Unusual amount of water inside machine	No sound of water from inlet valve	0	0							
	There is sound of water from inlet valve									Check water supply
	Not enough water flow									Check water supply
	Water never stops flowing in	0	0	0						
Washing system doesn't work	Pulsator does not spin (no sound of motor)	0								Motor
	Pulsator does not spin (there is sound of motor)					0	0			Belt, Motor
	Pulsator spins only one way	0					0			Pulley, Motor
	Pulsator spins slowly	0								Belt, Motor
Unusual draining	No draining	0								
	Drains slowly	0				0			0	
Unusual spinning system	No spinning (no sound of motor)								0	
	No spinning (Pulsator spins)	0		0						
	No force in spinning.(tub spins slowly)						0			
Unusual loud noise	Loud noise during washing									Belt, Motor
	Loud noise during dry spinning						0			Check installation
Water leak	Water leaks from drain pipe						0	0		Something clogged
	Water leaks at the bottom of machine									Drain pipe A, Pulsator
Incorrect working	Water is supplied during spinning									Unbalanced tub, leaning
	Rinses more than 3 times			0			0			Unbalanced tub, leaning
	Pulsator spins despite no water			0						Air pipe clogged
	Cannot change function program	0	0							Description of usage
	Water does not flow out of a filter									Description of usage
	No overflow during water filling as rinsing									Description of usage
	Selected washing program cannot be memorized									Description of usage
	Fabric softener flows away too fast									Description of usage
	Pulsator spins in short range as washing and rinsing					*				Description of usage
Works at low wash level then supplies water again									Description of usage	

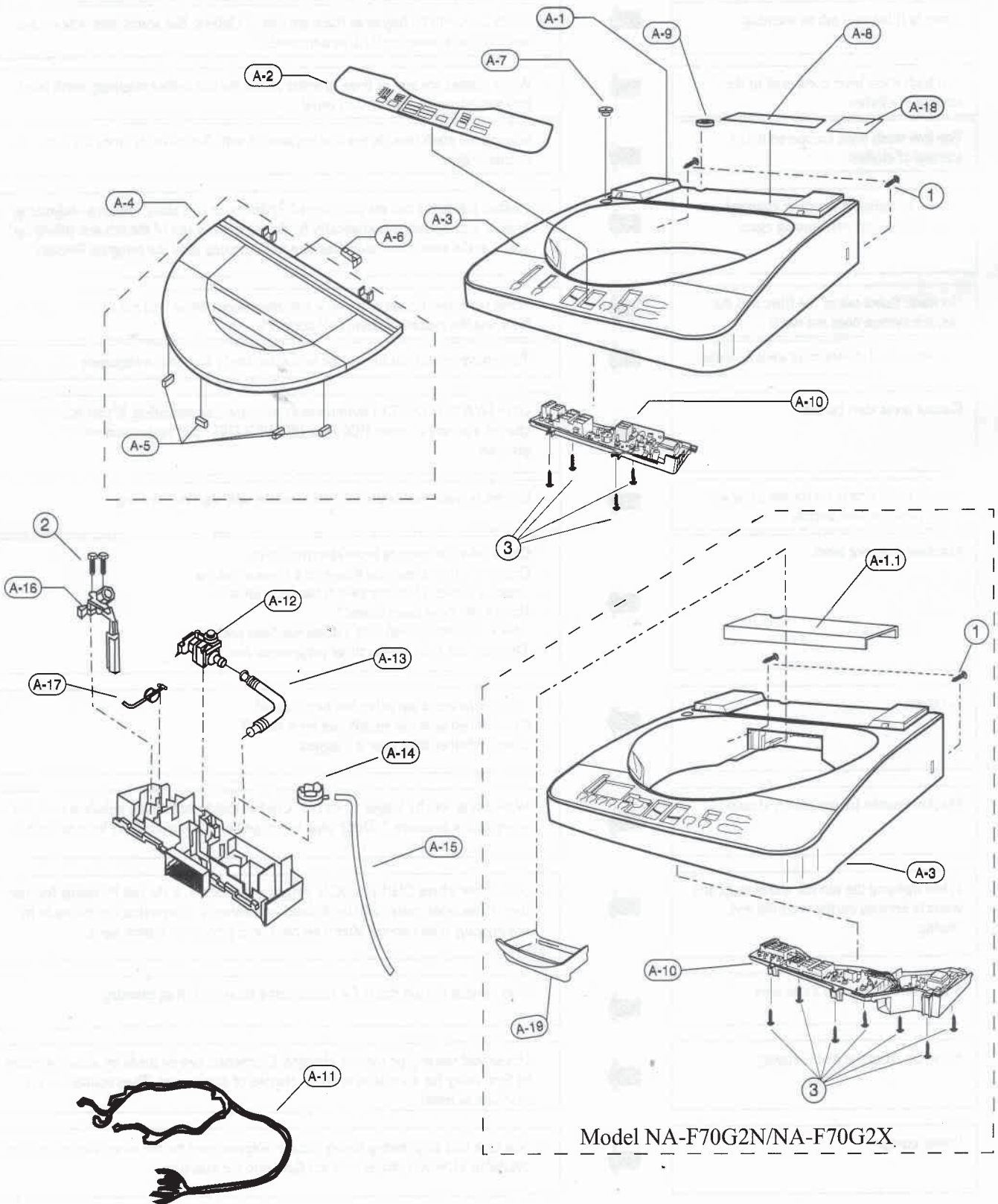
7. TROUBLESHOOTING

7.2 The following symptoms are not trouble

State		Cause
Water is filled into tub as washing	➔	- Wash level will be higher as there are lots of clothes. But sometimes when wash level is lower, water will fill automatically
Too high wash level compared to the amount of clothes	➔	- When clothes are wet or there is water inside the tub before washing, wash level will sometimes be higher than usual
Too low wash level compared to the amount of clothes	➔	- Sometimes wash level is too low because of soft clothes made from synthetic fiber or mixed fiber
During spinning, function is changed into water filling and start rinsing again	➔	- Clothes inside the tub are unbalanced, (piled up in one side), Balance -Adjusting System will operate automatically by draining water out of the tub and filling up again, at the same time, start washing and spinning until the program finishes.
No water flows out of the filter and the cascade system does not work	➔	- When wash level is set to be very low, sometimes water will not flow through the filter and the cascade system will not work
Tub and washed clothes move when draining	➔	- To remove excess bubbles, a tub will spin slowly and fast in sequence
Cannot press start button	➔	- Only [WATER LEVEL] button works after starting operating. If you want to change a program, press HOLD or [POWER OFF/ON] button and reset the program
Machine still works on former program when pressing start button	➔	- If there is water inside the tub, the machine will start by draining
Machine does not work	➔	- Check whether there is input electric current - Check whether a fuse has blown or a breaker has cut - Check whether a breaker switch has been pressed - Have a tap valve been closed? - Check whether [Start/Hold] button has been pressed - The machine is in pre-set timer program or not
No water	➔	- Check whether a tap valve has been closed - Check whether water supply has been cut off - Check whether inlet pipe is clogged
Machine works longer than it should	➔	- Wash timer will be longer since if 1. Clothes inside the tub are unbalanced 2. Inlet water is low pressure 3. Drain pipe is clogged or is connected too long or too high
When opening the tub lid, alarm rings and water is drained during washing and rinsing	➔	- In the case where CHILD LOCK program is selected, if the tub lid opens for more than 10 seconds, water will be drained immediately. Correction can be made by unplugging, then reinsert after 5 seconds, and press start button again
Sound of water in tub's rim area	➔	- Water inside the tub rim is for maintaining balance during spinning
No water from the mains supply	➔	- Household water pipe may be clogged. Correction can be made by allowing water to flow away for a while in order to dispose of dirty water. Then connect to the machine as usual
Power outage	➔	- Machine will stop during power outage. Re-press start button when electric current available. However, water will not flow into the machine.

8. LOCATION OF PARTS AND REPLACEMENT PARTS

8.1 Location of Parts - A Model NA-F60G2E/NA-F60G2T/NA-F70G2E



8. LOCATION OF PARTS AND REPLACEMENT PARTS

8.2 Replacement of Parts List - A

No.	Part Name	Part Number	Model					Remarks
			NA-F60G2T	NA-F60G2E	NA-F70G2E	NA-F70G2N	NA-F70G2X	
A1	Panel A (PP)	AXW01306UP0J		1	1			Grey (All Country)
A1	Panel A (PP)	AXW01306UP0D	1	1				White (UAE/PGF, Middle East, Jordan)
A1	Panel A (ABS)	AXW01306UP0A				1	1	Silver (All Country)
A2	Panel Face B	AXW01466UP5J		1				Grey (All Country)
A2	Panel Face B	AXW01466UP50D	1	1				White (UAE/PGF, Middle East, Jordan)
A2	Panel Face B	AXW01466US5J				1		Grey (Malaysia, Singapore IEC)
A2	Panel Face B	AXW01466US5D				1		White (UAE/PGF, Middle East)
A2	Panel Face B	AXW01466UY0J			1			Grey (Malaysia, Singapore IEC)
A2	Panel Face B	AXW01466UT5A					1	Silver (All Country)
A3	Body B (PP)	AXW01026UP0J		1	1			Grey (All Country)
A3	Body B (PP)	AXW01026UP0D	1	1				White (UAE/PGF, Middle East, Jordan)
A3	Body B (ABS)	AXW01026UT0J				1		Grey (All Country)
A3	Body B (ABS)	AXW01026UT0D				1		White (UAE/PGF, Middle East)
A3	Body B (ABS)	AXW01026UT0A					1	Silver (All Country)
A4	Lid Unit	AXW001G6UP0J		1				Grey (General Country)
A4	Lid Unit	AXW001G6UP0D		1				White (UAE/PGF, Middle East, Jordan)
A4	Lid Unit	AXW001G6UROD	1					White (UAE/PGF, Middle East)
A4	Lid Unit	AXW001G6US0A				1		Silver (All Country)
A4	Lid Unit	AXW001G6UT0A					1	Silver (All Country)
A5	Lid Packing A	AXW01646UP00	4	4	4	4	4	Rubber
A6	Lid Hinge Shaft	AXW01936UP00	1	1	1	1	1	
A7	Leveller	AXW03536DKA0	1	1	1	1	1	
A8	Spinner Lid Label	AXW11176UT50				1	1	Green
A8	Spinner Lid Label	AXW11176UP50	1	1	1			Silver
A9	FeedingPort Packing	AXW02676UP00	1	1	1	1	1	
A10	Controller Unit	AXW024C6UP06	1	1				
A10	Controller Unit	AXW024C6UT06				1	1	
A10	Controller Unit	AXW024C6UY06			1			
A11	Connector Lead Wire Unit	AXW014A6UP00	1	1	1			
A11	Connector Lead Wire Unit	AXW014A6UT00				1	1	
A12	Feeding Valve	AXW292119706	1	1	1			FVS-97V1/W-C
A12	Feeding Valve	AXW292120006				1	1	FVS-100V 1/W
A13	Feed Hose	AXW12606UP00	1	1	* 1			
A13	Feed Hose	AXW12606NK00				1	1	

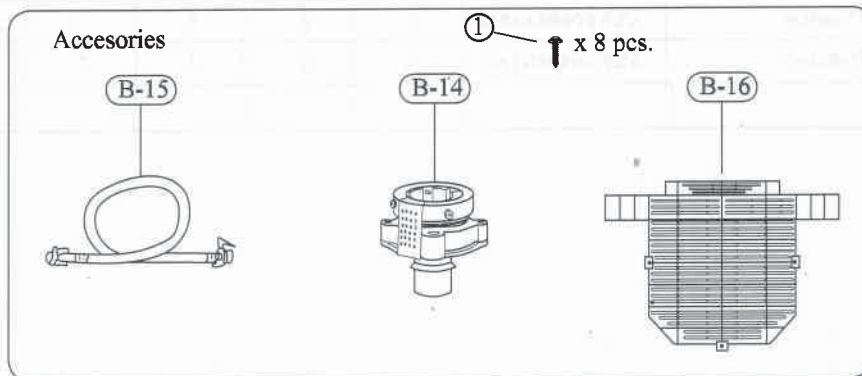
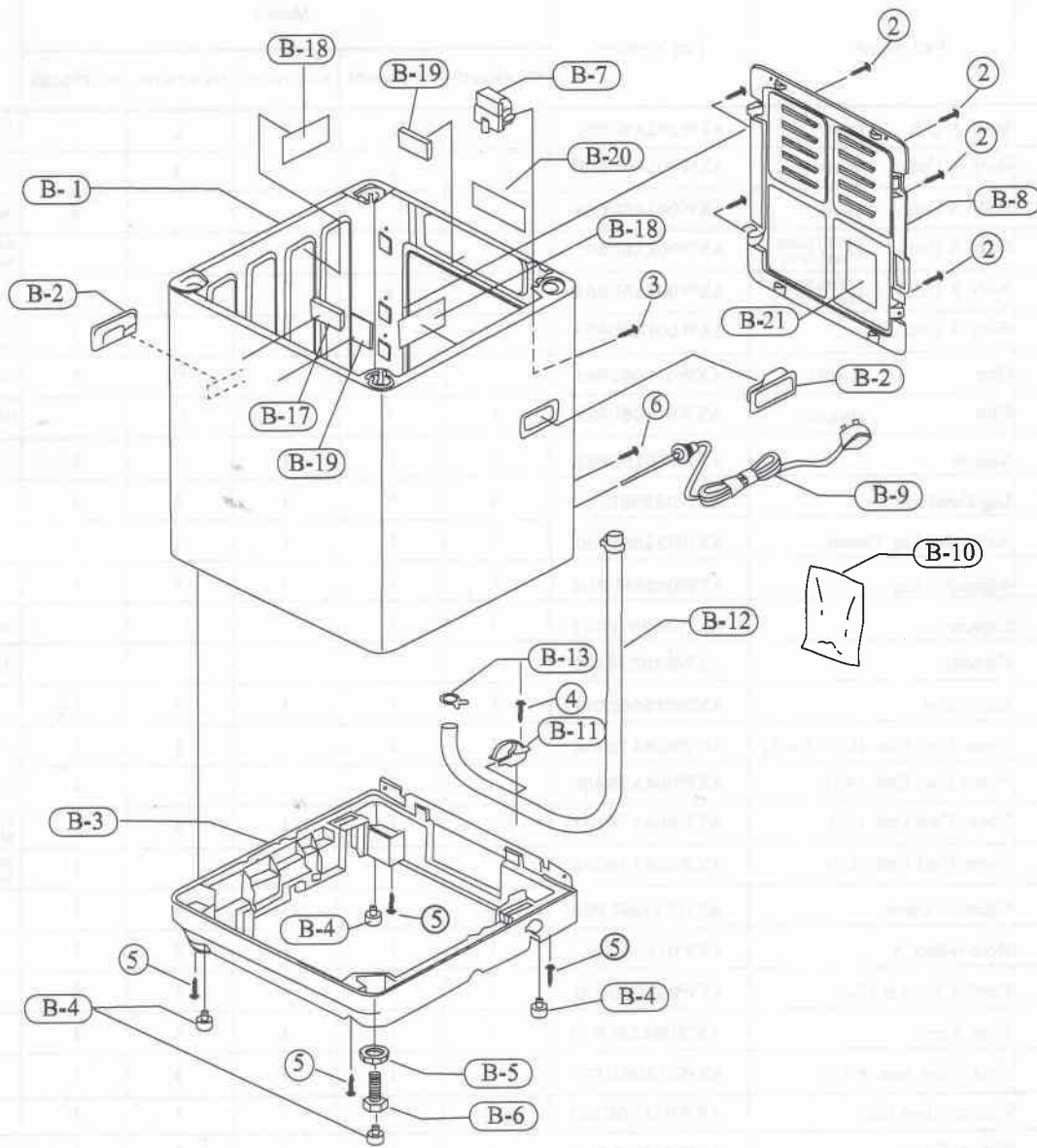
8. LOCATION OF PARTS AND REPLACEMENT PARTS

8.2 Replacement of Parts List - A

No.	Part Name	Part Number	Model					Remarks
			NA-F60G2T	NA-F60G2E	NA-F70G2E	NA-F70G2N	NA-F70G2X	
A14	Pressure Sensor Unit	AXW024T03200	1	1				Local Part
		OR AXW024T02900	1	1				Import Part
A14	Pressure Sensor Unit	AXW024T03300			1	1	1	Local Part
		OR AXW024T02800			1	1	1	Import Part
A15	Sub Drain Hose Unit	AXW002Q6UP00	1	1				
A15	Sub Drain Hose Unit	AXW002Q6UT00			1	1	1	
A16	Safety Switch	AXW166123400	1	1	1	1	1	Local Part
		OR AXW166122910	1	1	1	1	1	Import part
A17	Lid Hinge Spring	AXW11166UP00	1	1	1	1	1	
A18	Panel A Seal	AXW11636UP50	1	1	1			Silver
A18	Panel A Seal	AXW11636UT50				1	1	Green
1	Special Tapping Screw	XTWAXW469J	2	2	2	2	2	for Body B
2	Binding Tapping Screw	XTB4+15CFJ	2	2	2	2	2	Safety Switch
3	Binding Tapping Screw	XTB4+15CFJ	4	4	4	7	7	Controller Unit

8.LOCATION OF PARTS AND REPLACEMENT PARTS

8.3 Location of Parts List - B Model NA-F60G2E/F60G2T,NA-F70G2E/F70G2N/F70G2X



8. LOCATION OF PARTS AND REPLACEMENT PARTS

8.4 Replacement of Parts List B

No.	Part Name	Part Number	Model					Remarks
			NA-F60G2T	NA-F60G2E	NA-F70G2E	NA-F70G2N	NA-F70G2X	
B1	Body A Unit Grey	AXW001A6UP0J		1	1	1		Grey (Malaysia, Singapore IEC)
B1	Body A Unit White	AXW001A6UP0D	1	1		1		UAE/PGF,Middle East
B1	Body A Unit Silver	AXW001A6UP0A					1	All Country
B1	Body A Unit (With Earth Mark) Grey	AXW001A6U50J		1				Indonesia,Philippines, Singapore
B1	Body A Unit (With Earth Mark) White	AXW001A6U50D		1				Jordan
B1	Body A Unit	AXW001A6U50A					1	Indonesia,Philippines, Jordan
B2	Grip (Grey)	AXW01106UP0J		2	2	2	2	General Country
B2	Grip (White)	AXW01106UP0D	2	2		2		UAE/PGF,Middle East,Jordan
B3	Base A	AXW03016UP01	1	1	1	1	1	
B4	Leg Covering	AXW03396UP00	4	4	4	4	4	
B5	Adjustable Leg Thumb	AXW03436JZ00	1	1	1	1	1	
B6	Adjustable Leg	AXW03356UP00	1	1	1	1	1	
B7	Capacitor	AXW04037P007	1	1				10 uF
B7	Capacitor	AXW04037P107						11 uF
B8	Back Panel	AXW01566JZ00	1	1	1	1	1	
B9	Power Cord Unit (C2 + Earth)	AXW004A72904	1	1		1	1	UAE / PGF
B9	Power Cord Unit (A2)	AXW004A83400		1			1	Philippines
B9	Power Cord Unit (S3)	AXW004A78105	1	1	1	1	1	Malaysia,Singapore IEC, Middle East
B9	Power Cord Unit (C2)	AXW004A73004		1			1	Indonesia,Singapore Ex, Jordan
B10	Chemical Cover	AXW04486UP00	1	1	1	1	1	
B11	Hose Holder A	AXW01206MD00	1	1	1	1	1	
B12	Flexible Hose B Unit	AXW002E6UP00	1	1	1	1	1	
B13	Hose Brand	AXW02456UP00	1	1	1	1	1	
B14	Feed Valve Joint A Unit	AXW012H6UJ00	1	1	1	1	1	
B15	Pressure Hose Unit	AXW012C6UJ00	1	1	1	1	1	
B16	Bottom Cover	AXW21586UP00	1	1	1	1	1	
B17	Body A Protection	AXW90466FK10	2	2	2	2	2	t 20 Front Right & Back.
B18	Body A Protection	AXW90466AA5M	2	2	2	2	2	t 1 Right & Left
B19	Body A Protection	AXW90466NTA0	3	3	1	1	1	t 30 Front Left

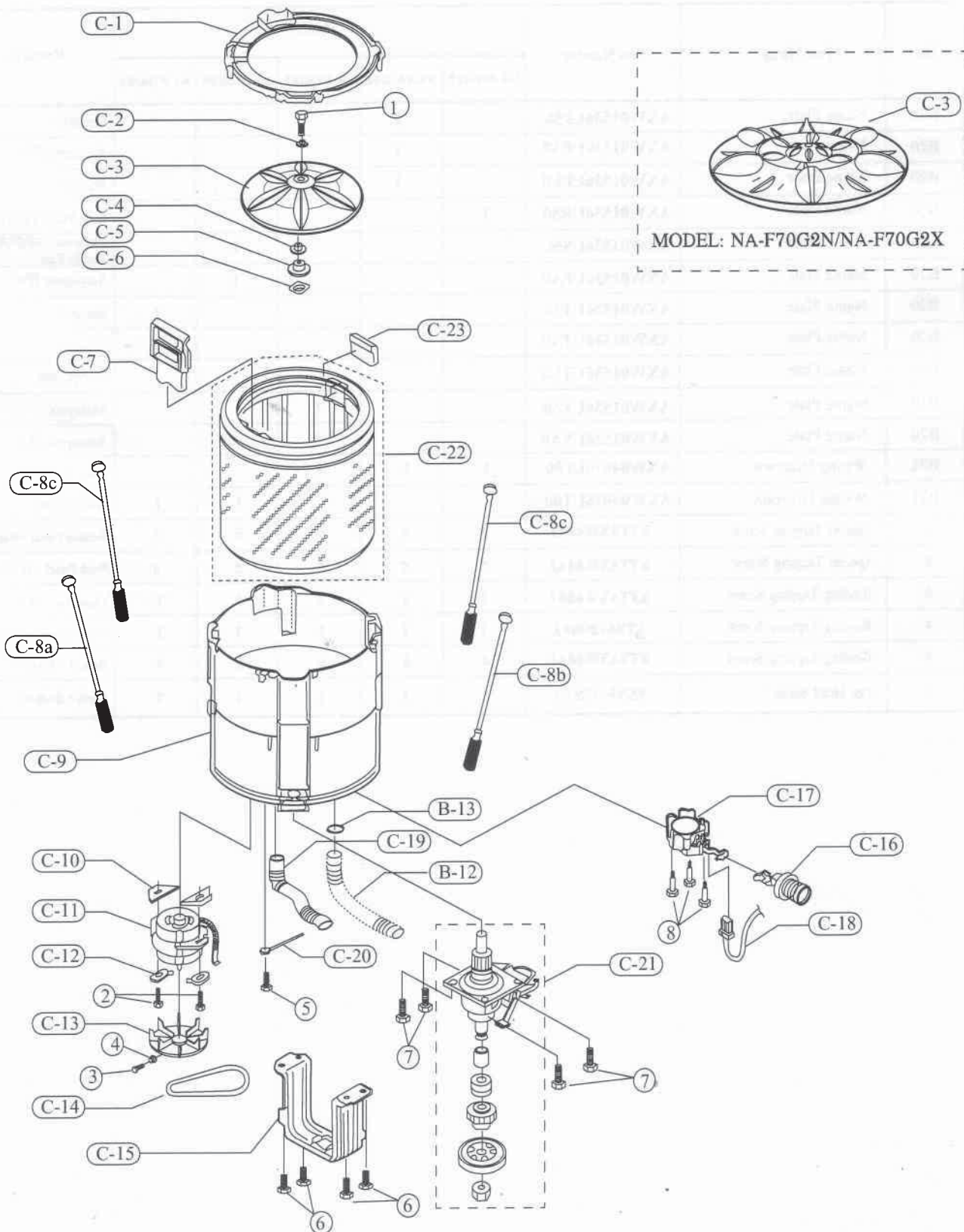
8. LOCATION OF PARTS AND REPLACEMENT PARTS

8.4 Replacement of Parts Litst B

No.	Part Name	Part Number	Model					Remarks
			NA-F60G2T	NA-F60G2E	NA-F70G2E	NA-F70G2N	NA-F70G2X	
B20	Name Plate	AXW01536UP50		1				General
B20	Name Plate	AXW01536UPA0		1				Singapore IEC
B20	Name Plate	AXW01536UPE0		1				Philippines
B20	Name Plate	AXW01536UR50	1					UAE/PGF,Middle East
B20	Name Plate	AXW01536US50				1		Malaysia,UAE/PGF, Middle East
B20	Name Plate	AXW01536UPA0				1		Singapore IEC
B20	Name Plate	AXW01536UT50					1	General
B20	Name Plate	AXW01536UTA0					1	Singapore IEC
B20	Name Plate	AXW01536UTE0					1	Philippines
B20	Name Plate	AXW01536UY50			1			Malaysia
B20	Name Plate	AXW01536UYA0			1			Singapore IEC
B21	Wiring Diagram	AXW04076UP00	1	1	1			All Country
B21	Wiring Diagram	AXW04076UT00				1	1	All Country
1	Special Tapping Screw	XTTAXW444J	8	8	8	8	8	Bottom Cover +Base A
2	Special Tapping Screw	XTTAXW444J	6	6	6	6	6	Back Panel + Body A
3	Binding Tapping Screw	XTTAXW438J	1	1	1	1	1	Capacitor + Body A
4	Binding Tapping Screw	XTB4+20BFJ	1	1	1	1	1	Hose Holder A + Base A
5	Binding Tapping Screw	XTTAXW444J	4	4	4	4	4	Base A + Body A
6	Pan Head Screw	XSN5+10BNS	1	1	1	1	1	Earth + Body A

8.LOCATION OF PARTS AND REPLACEMENT PARTS

■ 8.5 Location of Parts List - C Model NA-F60G2E/NA-F60G2T/NA-F70G2E



8. LOCATION OF PARTS AND REPLACEMENT PARTS

8.6 Replacement of Parts List C

No.	Part Name	Part Number	Model					Remarks
			NA-F60G2T	NA-F60G2E	NA-F70G2E	NA-F70G2N	NA-F70G2X	
C1	Outer Tub Cover	AXW32246MC0M	1	1	1	1	1	
C2	O-ring	AXW02576BM00	1	1	1	1	1	
C3	Pulsator	AXW05016UR00	1	1	1			Single pulsator
C3	Pulsator	AXW05016UP00				1	1	Triple pulsator
C4	Shaft Bushing	AXW05046UP00	1	1	1	1	1	
C5	Spinner Shaft Flange Nut	AXW15176RU00	1	1	1	1	1	
C6	Spinner Flange Washer B	AXW151980200	1	1	1	1	1	
C7	Filter Unit	AXW022A6RU00	1	1	1	1	1	
C8a	Suspension Unit (F-R)	AXW034U6UP50	1	1				Front Right
C8a	Suspension Unit (F-R)	AXW034U6UT50			1	1	1	Front Right
C8b	Suspension Unit (F-L)	AXW034U6UPA0	1	1				Front Left
C8b	Suspension Unit (F-L)	AXW034U6UTA0			1	1	1	Front Left
C8c	Suspension Unit (R-R/L)	AXW034U6UP00	2	2				Rear Right/Left
C8c	Suspension Unit (R-R/L)	AXW034U6UT00			2	2	2	Rear Right/Left
C9	Outer Tub A	AXW12016MC1M	1	1				
C9	Outer Tub A	AXW12016NK10			1	1	1	
C10	Motor Washer A	AXW04206JZ00	2	2	2	2	2	
C11	Motor	AXW040157406	1	1	1	1	1	
C12	Motor Washer B	AXW04216JZ00	2	2	2	2	2	
C13	Motor Pulley	AXW04116UP00	1	1	1	1	1	50 Hz For General
C13	Motor Pulley	AXW04106UP00		1			1	60 Hz For Philippines
C14	V-Belt	AXW041219850	1	1	1	1	1	M19.8 For General
C14	V-Belt	AXW041219050		1			1	M19 For Philippines
C15	Spinner Plate B	AXW32326UP00	1	1	1	1	1	
C16	Valve Frame Unit	AXW009D6NU00	1	1	1	1	1	
C17	Gear Motor	AXW348201006	1	1	1	1	1	Nakagawa
C18	Lead Wire Unit	AXW014B6UP00	1	1	1	1	1	
C19	Over Flow Hose B	AXW02346UP00	1	1	1	1	1	

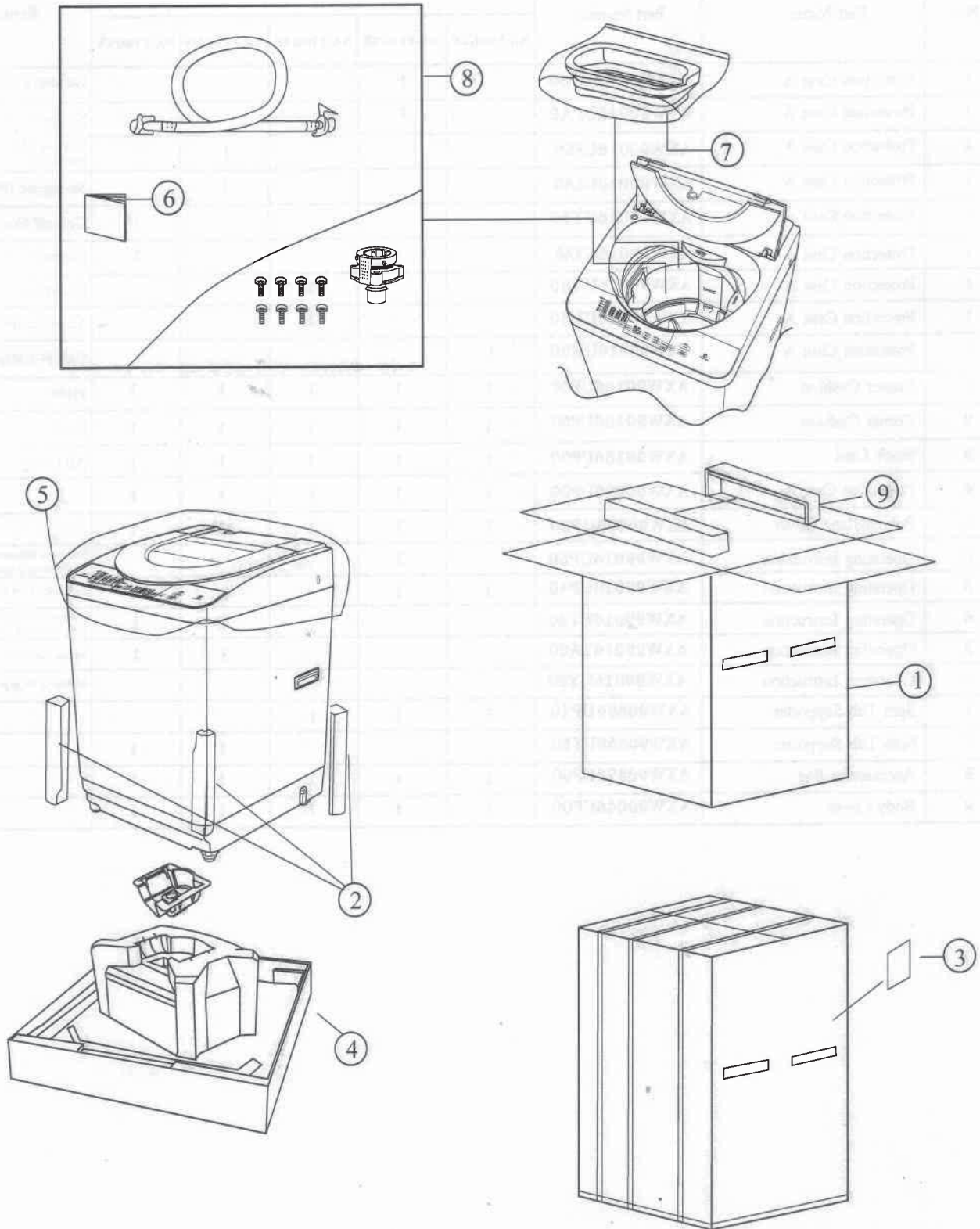
8. LOCATION OF PARTS AND REPLACEMENT PARTS

8.6 Replacement of Parts Litst C

No.	Part Name	Part Number	Model					Remarks
			NA-F60G2T	NA-F60G2E	NA-F70G2E	NA-F70G2N	NA-F70G2X	
C20	Earth Unit	AXW003F6UP00		1		1		Indonesia, Jordan, Philippines, Singapore Ex.
C21	Mechanism Case Unit	AXW020A6UP2C	1	1	1	1	1	
C22	Tub Unit	AXW002A6UP0D		1				SUS
C22	Tub Unit	AXW002A6UT0D			1	1	1	SUS
C22	Tub Unit	AXW002A5WP10	1					PP
C23	Rinse Case	AXW21715WP0D	1	1	1	1	1	
1	Special Screw	XSSAXW679	1	1	1	1	1	Pulsator
2	Special Bolt	XVGAXW839J	2	2	2	2	2	Motor
3	Special Bolt	XVGAXW703J	1	1	1	1	1	Motor Pulley
4	Special Nut	XNGAXW701J	1	1	1	1	1	Motor Pulley
5	Special Bolt	XVGAXW411J	1	1	1	1	1	Outer Tub + Earth U
6	Special Bolt	XTWAXW682J	4	4	4	4	4	Spinner Plate B
7	Special Bolt	XVGAXW812J	4	4	4	4	4	Mecha Case U
8	Special Tapping Screw	XTWAXW6518J	3	3	3	3	3	Gear Motor

8. LOCATION OF PARTS AND REPLACEMENT PARTS

8.7 Location of Packing Part



8. LOCATION OF PARTS AND REPLACEMENT PARTS

8.8 Replacement of Packing Part

No.	Part Name	Part Number	Model					Remarks
			NA-F60G2T	NA-F60G2E	NA-F70G2E	NA-F70G2N	NA-F70G2X	
1	Protection Case A	AXW90016UP50		1				General Country
1	Protection Case A	AXW90016UPA0		1				Singapore IEC
1	Protection Case A	AXW90016US50				1		Malaysia,UAE/PGF Middle East
1	Protection Case A	AXW90016USA0				1		Singapore IEC
1	Protection Case A	AXW90016UT50					1	General Country
1	Protection Case A	AXW90016UTA0					1	Singapore IEC
1	Protection Case A	AXW90016UY00			1			Malaysia
1	Protection Case A	AXW90016UY50			1			Singapore IEC
1	Protection Case A	AXW90016UR00	1					UAE/PGF,Middle East
2	Corner Cushion	AXW90156UP00	1	1	1	1	1	Front
2	Corner Cushion	AXW90156UP50	1	1	1	1	1	Back
3	Stock Card	AXW99186UP00	1	1	1	1	1	All Country
4	Protection Case B	AXW90026UP00	1	1	1	1	1	
5	Polyethylene Cover	AXW90606UP00	1	1	1	1	1	
6	Operating Instruction	AXW99016UP50		1				Malaysia,Indonesia,Singapore, Philippines,Singapore Ex.
6	Operating Instruction	AXW99016UPA0	1	1				Jordan,UAE/PGF,Middle East
6	Operating Instruction	AXW99016UT50				1	1	Malaysia,Indonesia, Singapore IEC ,Philippines
6	Operating Instruction	AXW99016TA00				1	1	Jordan,UAE/PGF,Middle East
6	Operating Instruction	AXW99016UY50			1			Malaysia,Singapore IEC
7	Spin Tub Supporter	AXW90856UP10	1	1	1			
7	Spin Tub Supporter	AXW90856UT50				1	1	
8	Accessories Bag	AXW90576UP00	1	1	1	1	1	
9	Body Cover	AXW90046UP00	1	1	1	1	1	

