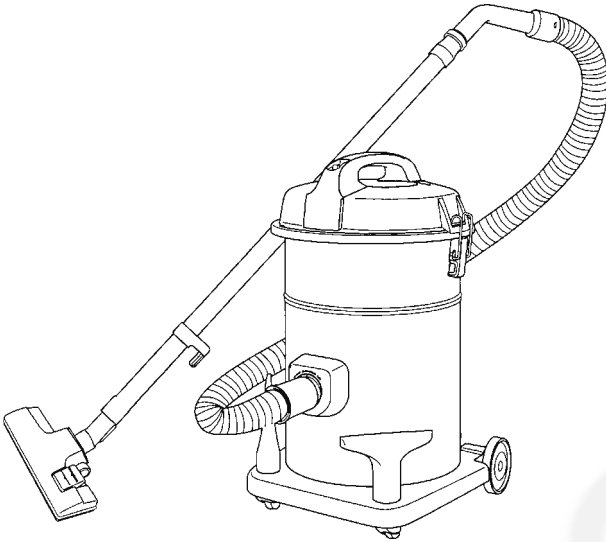


# Service Manual

## Vacuum Cleaner

Model No. **MC-YL799-N147**  
**MC-YL799-N149**  
**MC-YL799-N747**

Product Color : Gold  
 Destination : 1.UAE -----YL799-N147  
 2.Oman Kuwait -----YL799-N149  
 3.Saudi Arabia Kuwait ---YL799-N747



### ⚠ WARNING

This service information is designed for experienced repair technicians only and is not designed for use by the general public. It does not contain warnings or cautions to advise non-technical individuals of potential dangers in attempting to service a product. Products powered by electricity should be serviced or repaired only by experienced professional technicians. Any attempt to service or repair the product or products dealt with in this service information by anyone else could result in serious injury or death.

### IMPORTANT SAFETY NOTICE

There are special components used in this equipment which are important for safety. These parts are marked by ⚠ in the Schematic Diagrams, Circuit Board Diagrams, Exploded Views and Replacement Parts List. It is essential that these critical parts should be replaced with manufacturer's specified parts to prevent shock, fire or other hazards. Do not modify the original design without permission of manufacturer.

•The specifications and the parts of this product are subject to change without notice for performance improvement or other purposes.

## TABLE OF CONTENTS

|   | PAGE      |                                       | PAGE |
|---|-----------|---------------------------------------|------|
| <b>1 Specifications</b> -----                           | <b>2</b>  | 7.1. EXPLODED VIEW (ATTACHMENTS)----- | 12   |
| <b>2 Location of Controls and Components</b> -----      | <b>3</b>  | 7.2. PARTS LIST (ATTACHMENTS)-----    | 12   |
| <b>3 Troubleshooting Guide</b> -----                    | <b>5</b>  | 7.3. EXPLODED VIEW (BODY UNIT)-----   | 13   |
| <b>4 Disassembly and Assembly Instructions</b> -----    | <b>6</b>  | 7.4. PARTS LIST (BODY UNIT)-----      | 14   |
| 4.1. Main body and the dust box separation-----         | 6         | 7.5. PACKING INSTRUCTIONS -----       | 15   |
| 4.2. Motor removal-----                                 | 6         | 7.6. PACKING LIST -----               | 16   |
| 4.3. Air outlet cover unit removal -----                | 8         |                                       |      |
| 4.4. Main switch (with fuse) removal -----              | 8         |                                       |      |
| 4.5. Fuse replacement -----                             | 9         |                                       |      |
| 4.6. Indicator pipe unit removal -----                  | 9         |                                       |      |
| 4.7. Cloth bag unit removal -----                       | 9         |                                       |      |
| <b>5 Wiring Connection Diagram</b> -----                | <b>10</b> |                                       |      |
| <b>6 Schematic Diagram</b> -----                        | <b>10</b> |                                       |      |
| <b>7 Exploded View and Replacement Parts List</b> ----- | <b>12</b> |                                       |      |

# 1 Specifications

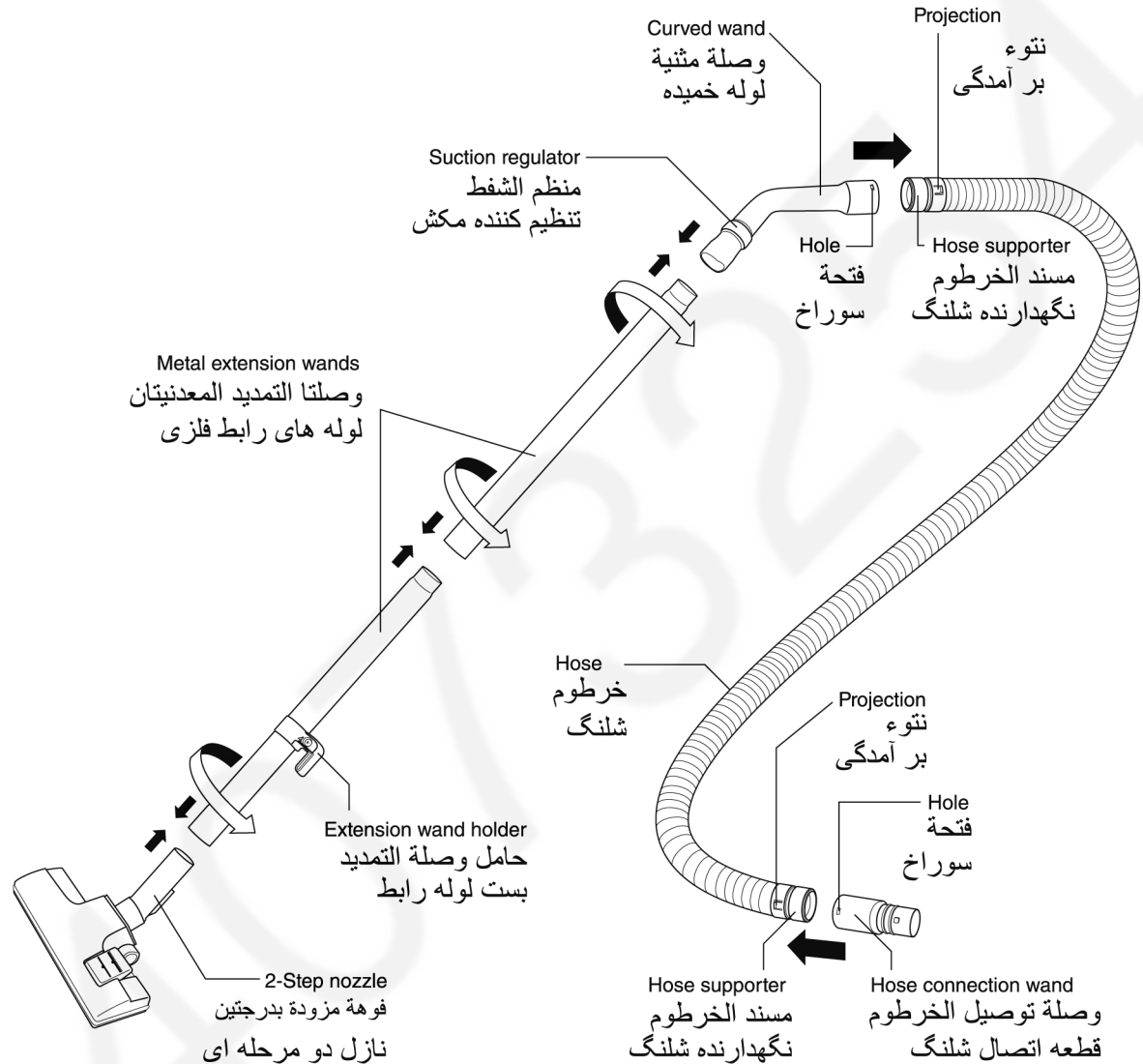
|                           |                                  |
|---------------------------|----------------------------------|
| Model No.                 | MC-YL799                         |
| Motor power               | 2400W                            |
| Dust capacity             | 21.0L                            |
| Cord Length               | 8.0m                             |
| Weight (With Attachments) | 7.8kg                            |
| Extension Wand            | METAL × 2                        |
| Blower Operation          | O                                |
| Floor Nozzle              | 2-Step                           |
| Attachments               | Crevice Tool / Upholstery Nozzle |

Specifications are subject to change without notice for further improvement.

## 2 Location of Controls and Components

### PART NAMES AND THEIR ASSEMBLY

أسماء الأجزاء وتركيبها  
نام قطعات و نصب آنها



#### NOTE

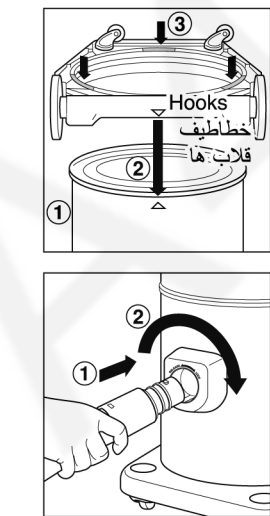
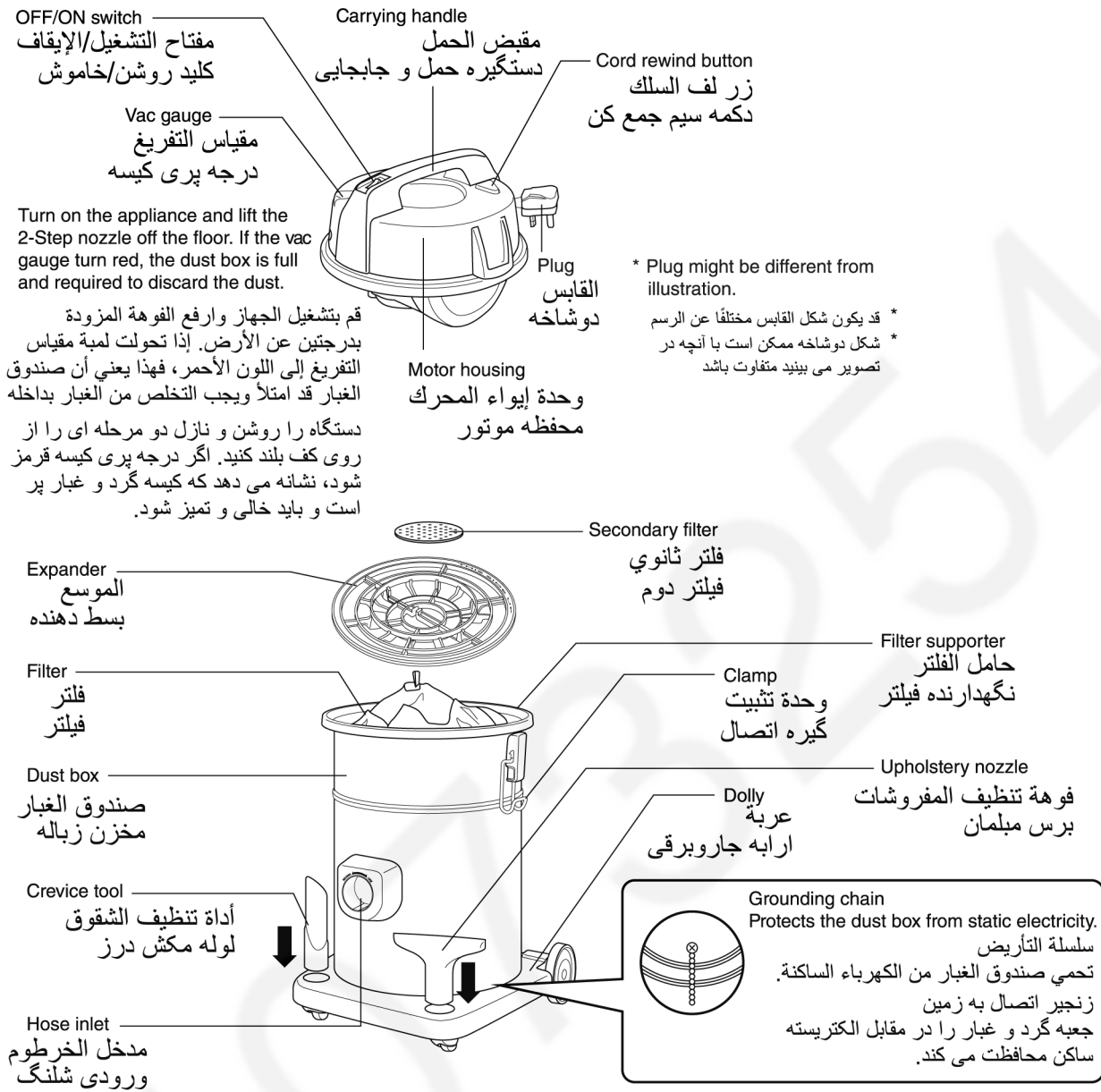
- At the beginning when you purchase this product, accessories like curved wand, hose, crevice tool and upholstery nozzle are located inside the dust box.
- Push together until the projection clicks into place in the curved wand / hose connection wand hole.

#### ملاحظة

- عند بداية شراء هذا المنتج، فإن بعض الملحقات، مثل الوصلة المثبته والخرطوم وأداة تنظيف الشقوق وفوهة تنظيف المفروشات، تكون داخل صندوق الغبار.
- ادفع الأجزاء معاً حتى صدور صوت يدل على استقرار النتوء في موضعه في الوصلة المثبته/فتحة وصلة توصيل الخرطوم.

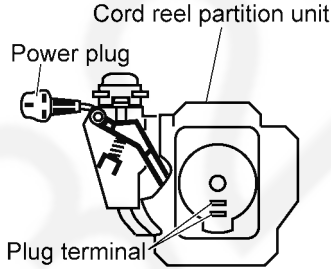
#### توجه

- در ابتدا که این محصول را خریداری می کنید، تجهیزات جانبی آن مانند لوله خمیده، شلنگ، لوله مکش شکافها و درزها و برس مبلمان (نازل اثاثیه و مبلمان) در محفظه گردوغبار قرار دارند.
- برآمدگی لوله خمیده را خوب در حفره رابط ورودی وصل لوله جاروبرقی وارد نمایید تا خوب جا بیفتد و صدایی شبیه کلیک را بشنوید.



- Align the triangle markings and push in the dust box until it clicks into place with the dolly. (Once it is fixed into place, it cannot be removed.)  
 • قم بمحاذاة العلامات مثلثة الشكل وادفع صندوق الغبار حتى سماع صوت يبدل على استقراره في موضعه في العربة. (عندما يُثبت في موضعه، لن يمكن إزالته.)  
 • علامة سه گوش را خوب بر هم منطبق و تنظیم نموده، مخزن زباله را با فشار جا بزنیید به نحوی که (مخزن زباله به خوبی بر روی چراخ سوار و نصب شود.)
- Insert the hose connection wand into the hose inlet.  
 • أدخل وصلة توصيل الخرطوم بمدخل الخرطوم  
 • رابط لوله ای اتصال شلنگ را در قسمت ورودی شلنگ قرار دهید.

### 3 Troubleshooting Guide

| CONDITION   | CHECKPOINT  | METHOD OF INSPECTION   | CAUSE / REMEDY  |
|---|---|--|---|
| Fan motor unit fails to rotate when it is switched on | Meltdown of fuse unit   | <ul style="list-style-type: none"> <li>• Check fuse continuity. (Visual and conduction check)</li> </ul>   | Replace the main switch unit (with fuse).<br><b>*Check the fan motor unit at same time.</b><br><b>There may be the possibility of a motor problem</b> |
|   | Continuity of Cord reel partition unit  | <ul style="list-style-type: none"> <li>• Check that there is conduction between the power plug and the plug terminal using a tester.</li> <li>• Check the state of connection of the flag terminals to the plug terminals.(Check that there is no looseness.)</li> </ul> Also check for the presence/absence of protrusion and line breakage in the lead wires and flag terminals. | Replace the cord reel partition unit  |
|   |  <p>The diagram shows a cross-section of the cord reel partition unit. A power plug is inserted into the unit, and its terminals are connected to the plug terminals inside. Labels include 'Cord reel partition unit', 'Power plug', and 'Plug terminal'.</p> |  |   |
|   | Continuity of the main switch unit  | <ul style="list-style-type: none"> <li>• Check with tester between both terminals on the switch, while turning switch ON/OFF.</li> </ul>   | If there is no continuity, replace the main switch unit (with fuse).  |
|   | Check of the motor connection faston terminals  | <ul style="list-style-type: none"> <li>• Check if it is securely connected by pulling on the lead wire.</li> </ul>   | Securely connect.   |
|   | Continuity of the fan motor unit  | <ul style="list-style-type: none"> <li>• Check the continuity between both terminals (1.Blue connection of lead wire 2.Brown connection of lead wire) (lead wire connection terminal) of the fan motor unit.</li> </ul>  | If there is not continuity, replace the fan motor unit. (Disconnection of the coil inside the motor)  |
|   | Wearing of the carbon brush   | <ul style="list-style-type: none"> <li>• Visually check if one side of the carbon brush is worn out abnormally.</li> </ul>   | Replace the fan motor unit.   |
| Suction is weak                                       | Clogging in Curved pipe unit / Joint pipe unit / Nozzle assy / Hose unit  | <ul style="list-style-type: none"> <li>• Check for clogging in each part</li> </ul>  | Remove dust or replace parts  |
|   | Clogging in the cloth bag unit / Secondary filter   | <ul style="list-style-type: none"> <li>• Check for clogging in each part</li> </ul>  | Clean   |
| Abnormal sound  | Indicator pipe unit (Air protector)   | <ul style="list-style-type: none"> <li>• Is it full of dust? Clogging</li> </ul>   | Clean<br>Remove dust from each parts  |
|   | Fan motor unit  | <ul style="list-style-type: none"> <li>• Problem with the fan motor unit or carbon brush</li> </ul>  | Replace the fan motor unit.   |

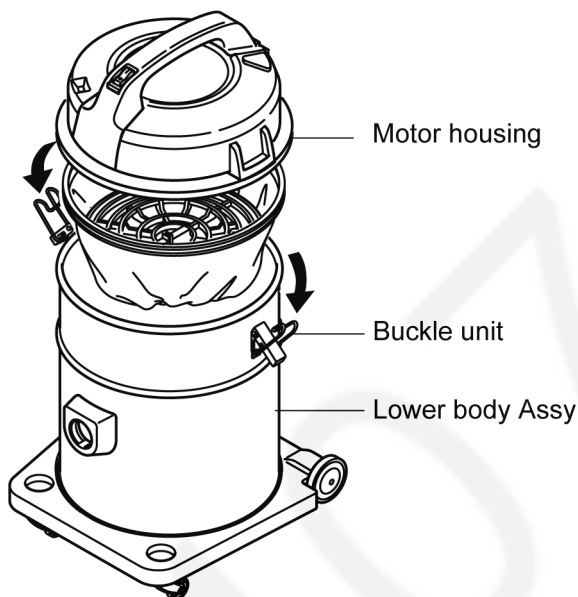
## 4 Disassembly and Assembly Instructions

### Caution:

1. When disassembling, check the component fitting state and wirings. After repairing, always restore them to the original state.
2. Carefully handle the removed components, packing, etc. If they are damaged, then replace them with new ones.
3. After repairing, check that the components, etc., in the vicinity of the repaired sections are not damaged, the removed components are in place, and the wirings are restored to the original state. Carry out the test run. Also check that the following requirements are met.
  - Insulation resistance  
Must be  $5\ \Omega$  or more when a DC voltage of 500 V is applied across the power plug and the motor core for one second.
  - Dielectric strength  
Must withstand an AC voltage of 1,250 V applied across the power plug and the motor core for one minute.
4. Do not alter the model, parts, or materials during repair.
5. If a wiring unit is supplied as a repair part, replace the whole unit with the new one instead of repairing or reconnecting the broken portions only.
6. Insert/remove the fast-on terminals by pushing/pulling them straight out without jiggling them or applying unnecessary force.

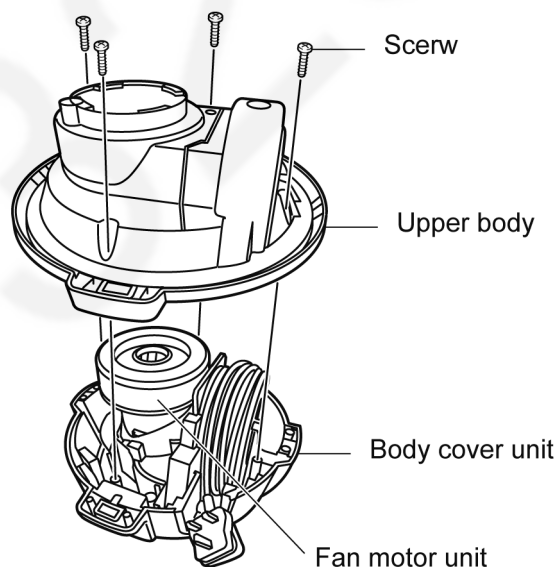
### 4.1. Motor housing and the lower body unit separation

1. Remove the buckle unit, and remove the motor housing from the lower body Assy.

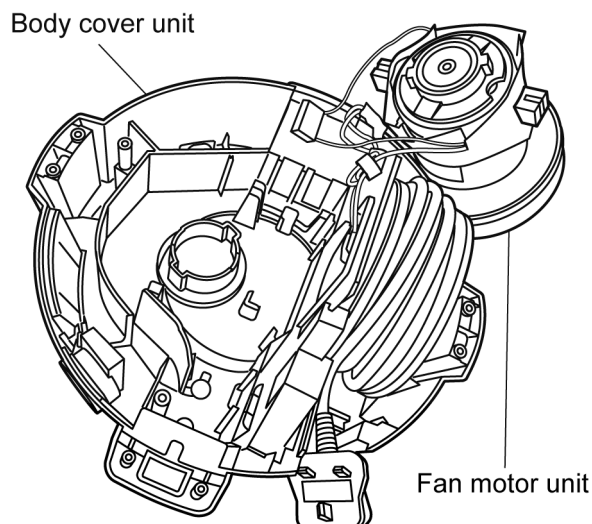


### 4.2. Fan motor unit removal

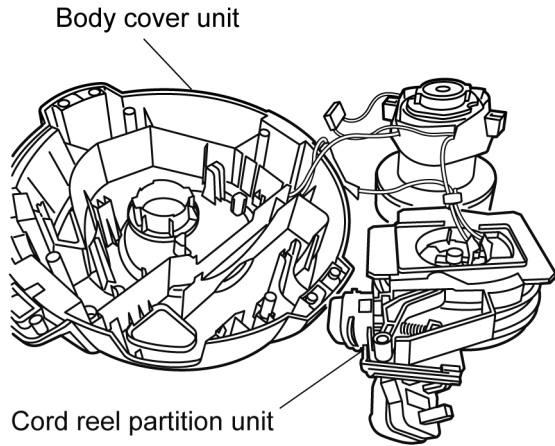
1. Flip the motor housing, and remove the 4 screws holding the upper body with the body cover unit, and remove the upper body.



2. Take the fan motor unit from the body cover unit.

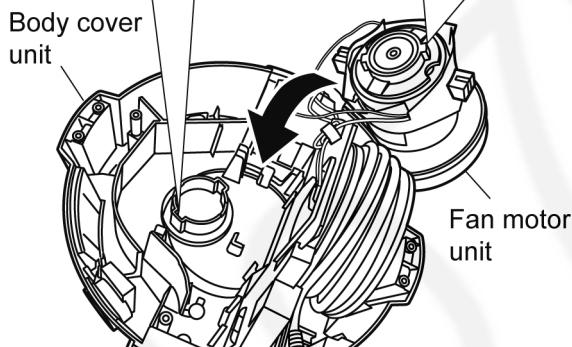
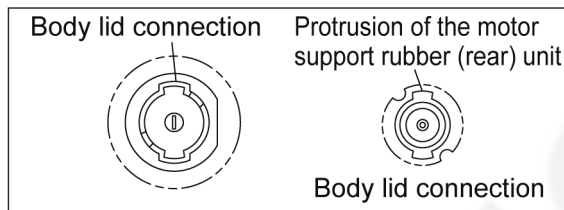


3. Take the cord reel partition unit out from the body cover unit.



**<Assembly precaution>**

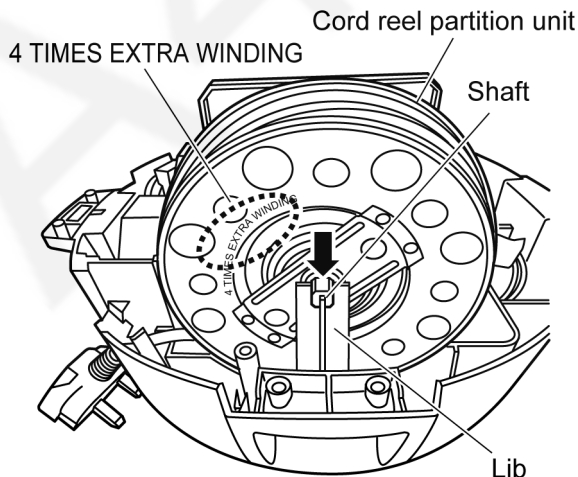
When mounting, align form of the motor support rubber (rear) unit with form of the body cover connection



4. Mounting align the shaft of the cord reel to the rib of the body cover unit.

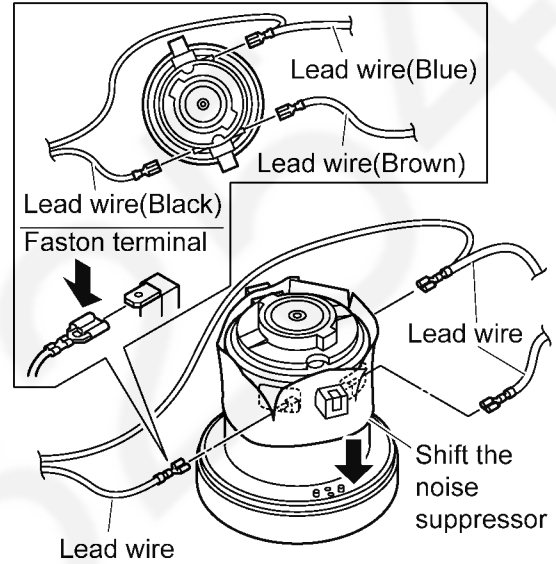
**(About the extra winding of the wire)**

\*Extra winding : 4 times

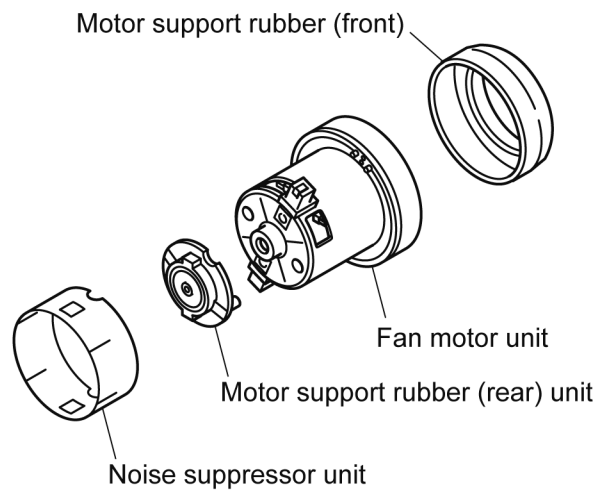


5. Remove the lead wires by shifting the noise suppressor unit.

\* Take care not to damage the noise suppressor when shifting the noise suppressor unit.



6. Remove the noise suppressor unit, the motor support rubber (front), and the motor support rubber (rear) unit.

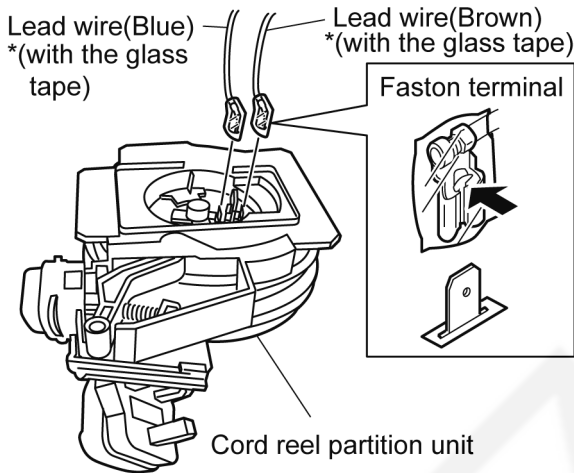


7. Remove the lead wires.

\* There is a tape (glass tape) wrapped on the faston terminals, and when removing the faston terminals, press on to the protrusion on the faston terminal (arrow) as shown in fig. It can be removed by pressing on the tape from above.

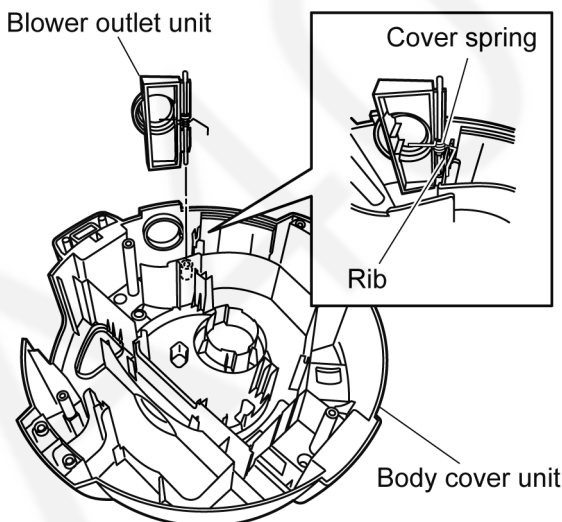
\* When mounting the cord reel partition unit, make sure to wrap the faston terminals of the connected lead wires with the glass tape.

|                  |  |
|------------------|--|
| <b>⚠ WARNING</b> |  |
| <b>!</b>         | Pull the faston terminals straight out without twisting. |



### 4.3. Blower outlet unit removal

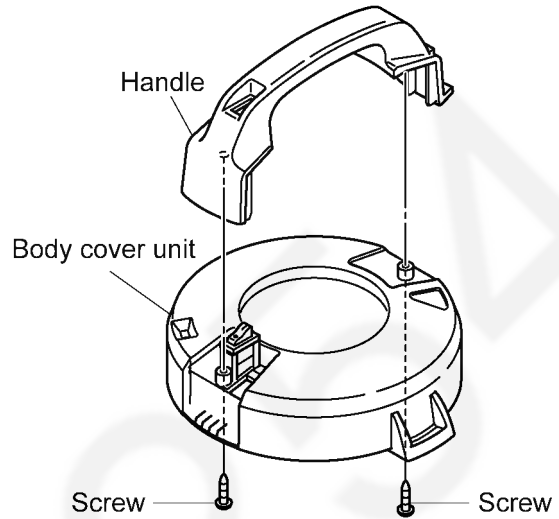
1. Remove the blower outlet unit from the body cover unit.



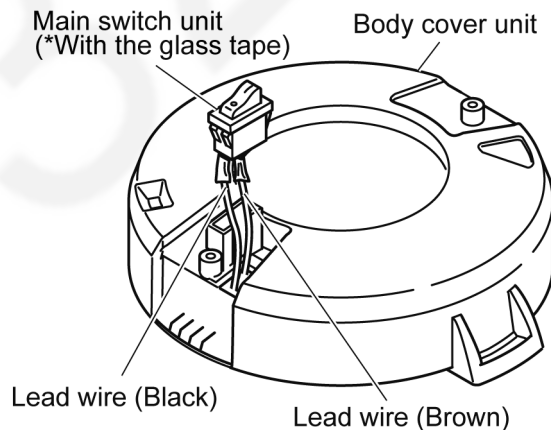
\* Locations of parts mounted to Blower outlet unit

### 4.4. Main switch unit (with fuse) removal

1. Remove the 2 screws mounting the handle.
2. Flip the body cover unit and remove the handle.



3. Remove the main switch unit and replace with the new main switch unit.



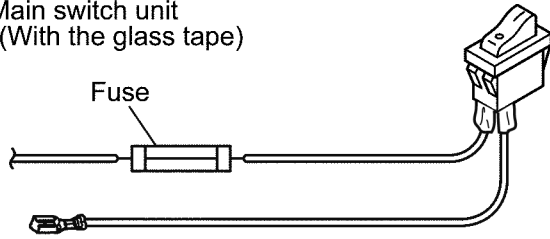
\* Main switch unit has a fuse built-in. Also, there are tapes (glass tapes) wrapped on each part.



## 4.5. Fuse replacement

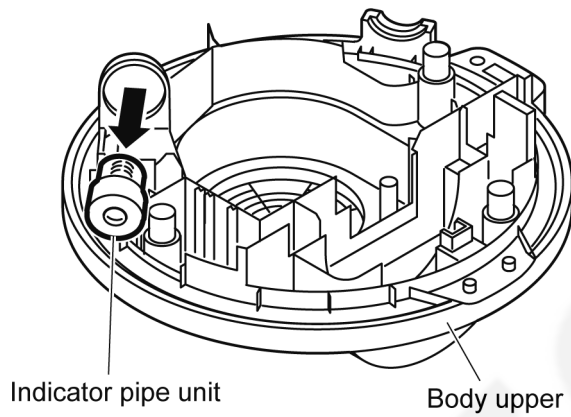
\* Fuse is supplied by the main switch unit (with fuse)

Main switch unit  
\*(With the glass tape)



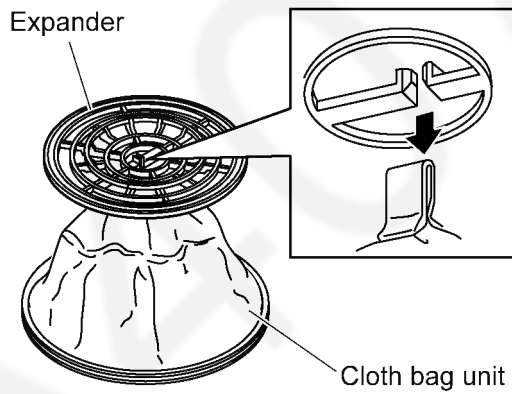
## 4.6. Indicator pipe unit removal

1. Remove the indicator pipe unit from the body upper.

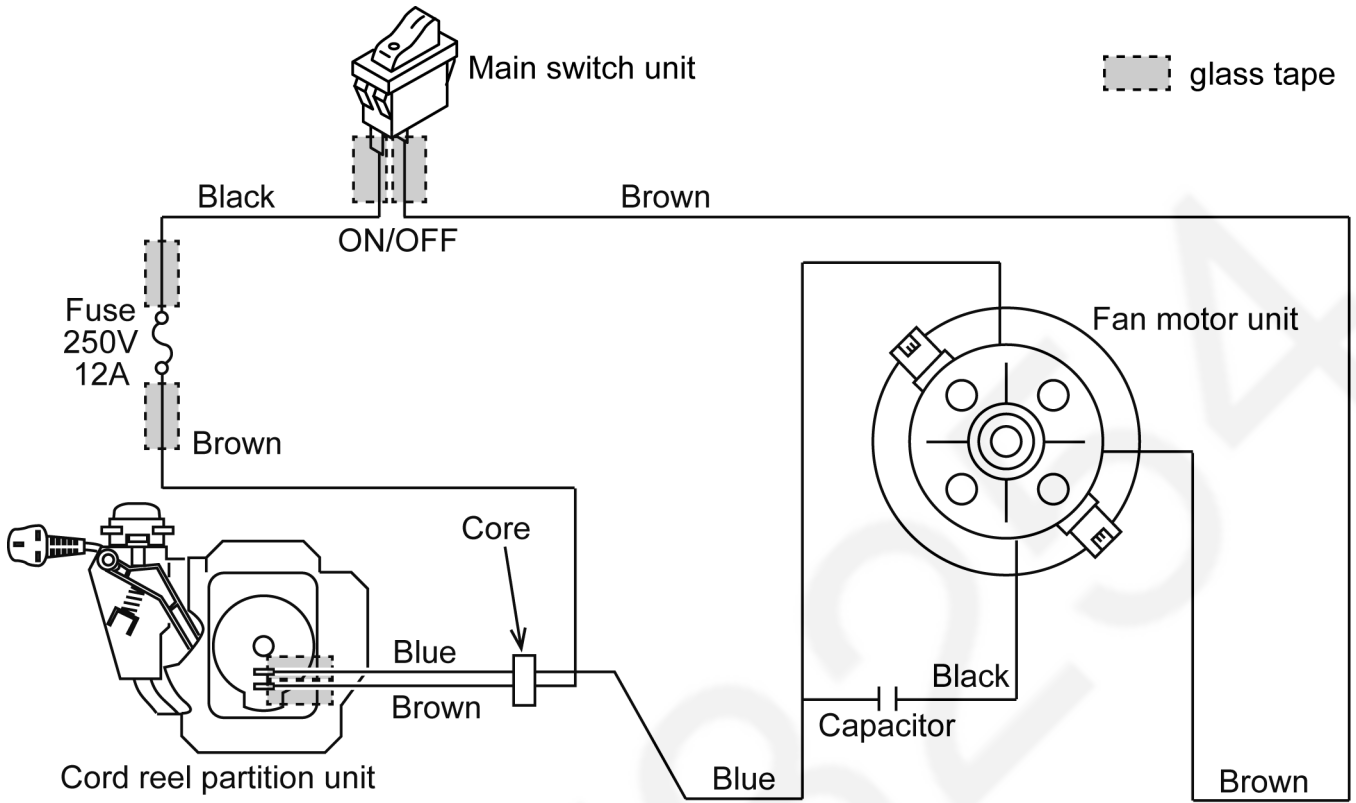


## 4.7. Cloth bag unit removal

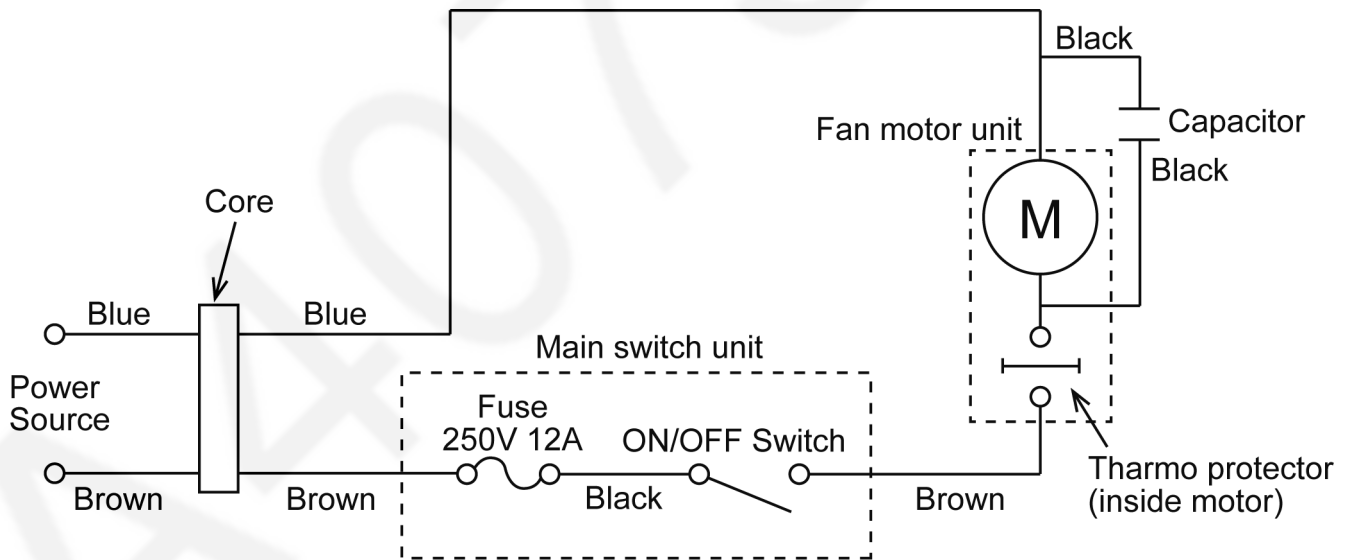
1. Remove the cloth bag unit from the expander.



## 5 Wiring Connection Diagram



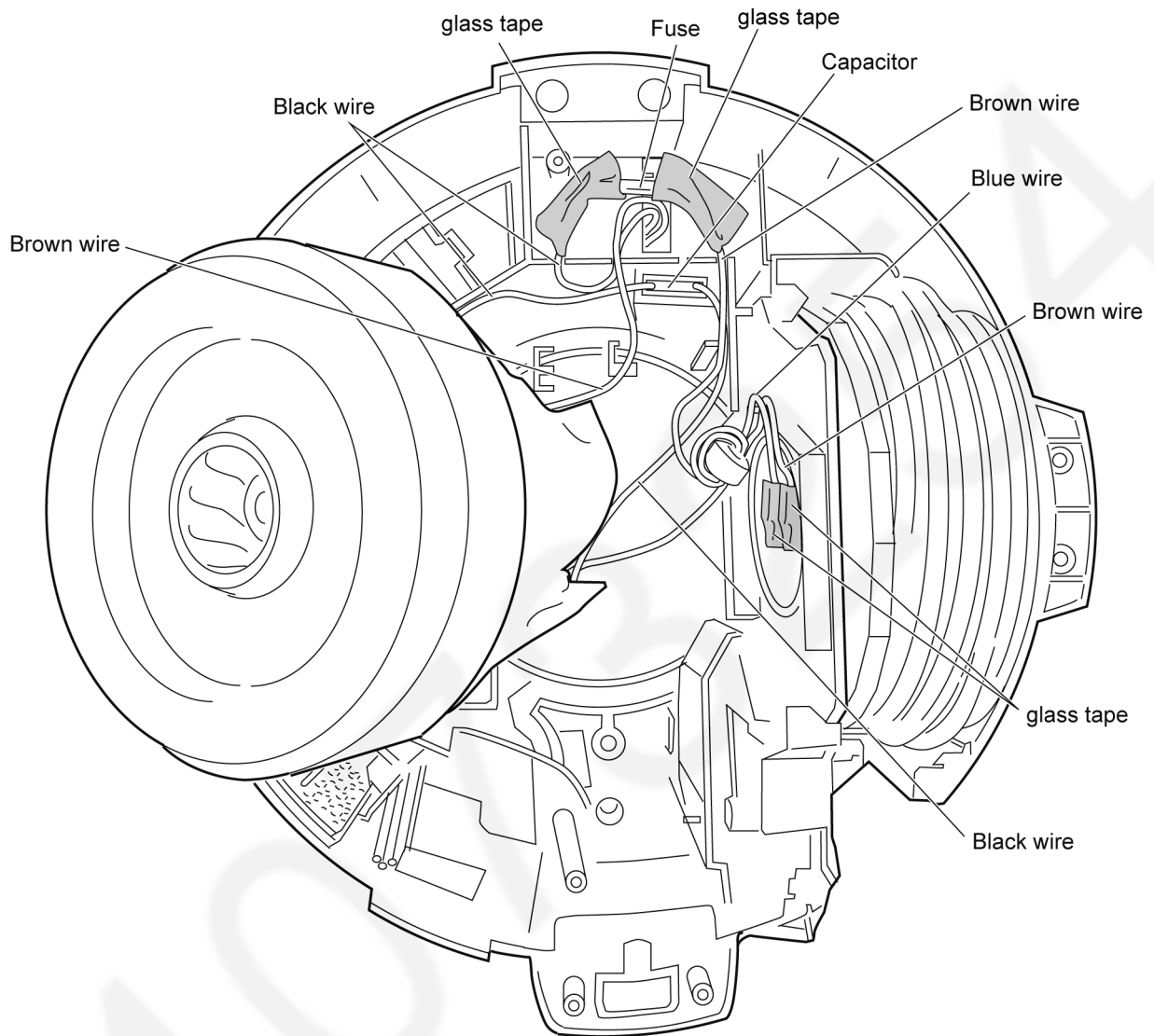
## 6 Schematic Diagram



## 7 Pictorial Diagram

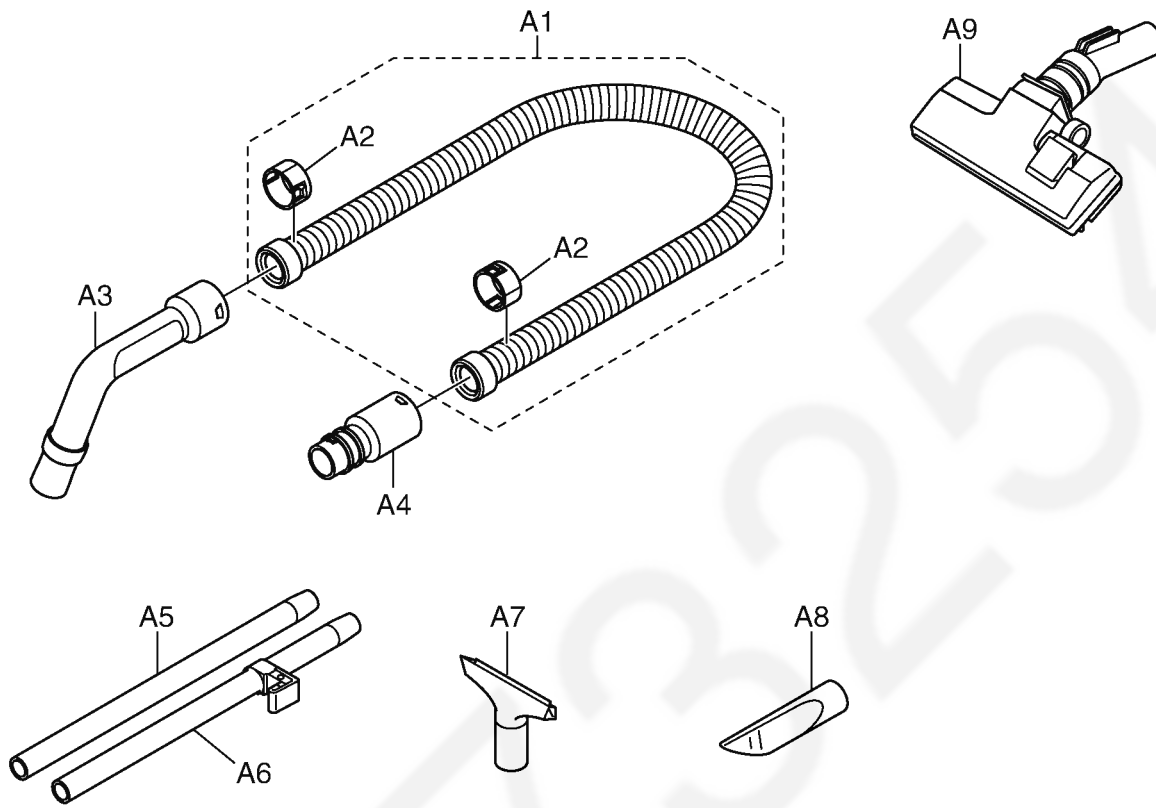
NOTE: After servicing any electrical component or electrical enclosure, the unit should be reassembled and checked for dielectric breakdown or current leakage.

Use Glass Tape (Refer to "Replacement Parts List") whenever original tape is removed



## 8 Exploded View and Replacement Parts List

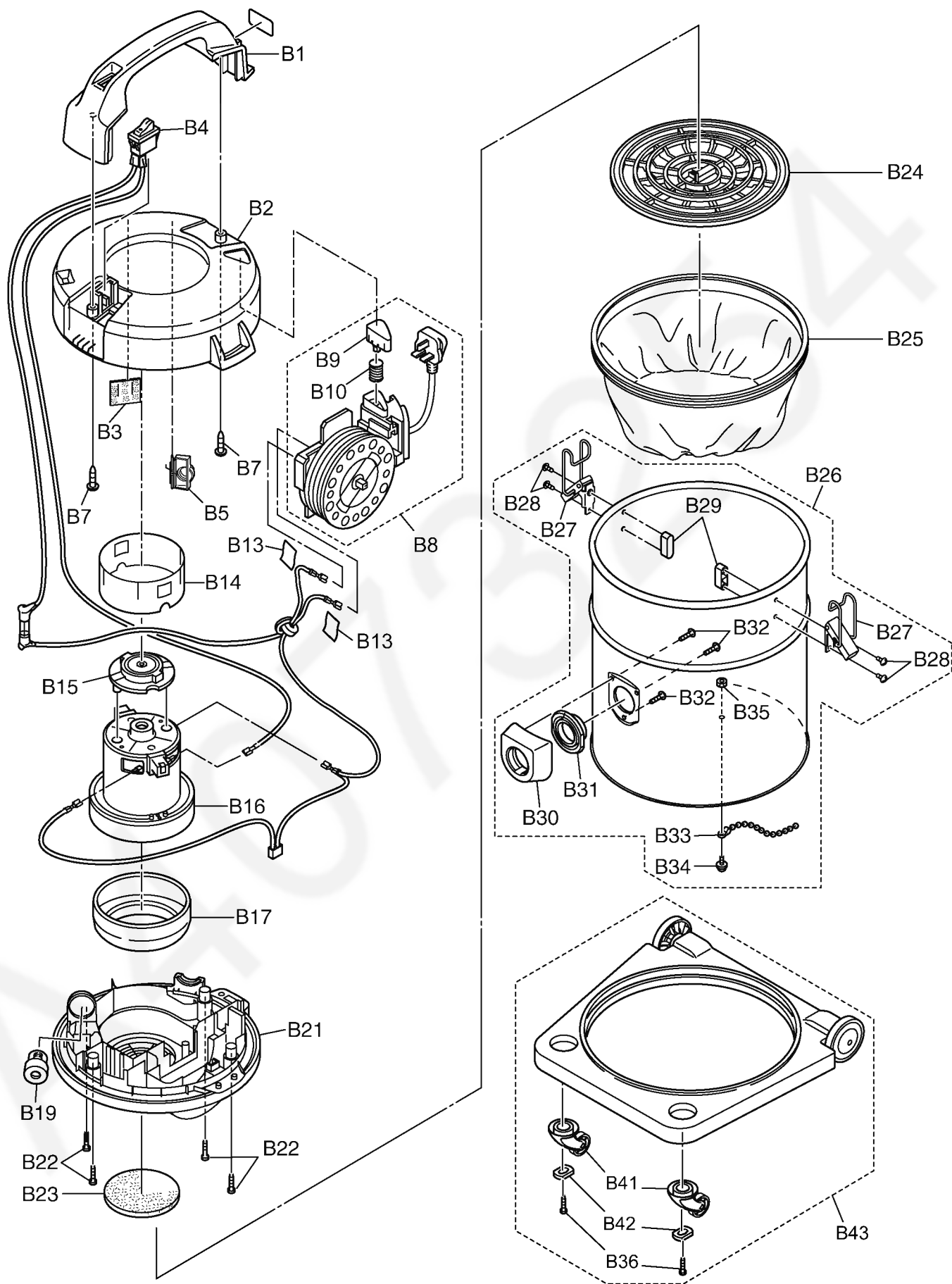
### 8.1. EXPLODED VIEW (ATTACHMENTS)



### 8.2. PARTS LIST (ATTACHMENTS)

| Safety | Ref.No | Service Parts No. | Part Name & Description | Q'TY | Remarks  |
|--------|--------|-------------------|-------------------------|------|--|
|        | A1     | AMV84P7X000J      | HOSE UNIT               | 1    | (HOSE) WITH PROJECTION                             |
|        | A2     | AMC24P-0R0V       | HOSE SUPPORTER          | 2    | (PROJECTION)                                       |
|        | A3     | AMC98P4Y000J      | CURVED PIPE UNIT        | 1    | (CURVED WAND) WITH SUCTION REGULATOR               |
|        | A4     | AMV09PLV0K0J      | JOINT PIPE UNIT         | 1    | (HOSE CONNECTION WAND)                             |
|        | A5     | AMC99PDE000J      | EXTENSION WAND ASSY     | 1    | (METAL EXTENSION WANDS)                            |
|        | A6     | AMV99P81000J      | EXTENSION WAND ASSY     | 1    | (METAL EXTENSION WANDS) WITH EXTENSION WAND HOLDER |
|        | A7     | AMV86R81000J      | UPHOLSTERY NOZZLE UNIT  | 1    | (UPHOLSTERY NOZZLE)                                |
|        | A8     | AMC60R-DB03       | CREVICE TOOL            | 1    |  |
|        | A9     | AMC99R-RS0U       | NOZZLE ASSY             | 1    | (2-STEP NOZZLE)                                    |

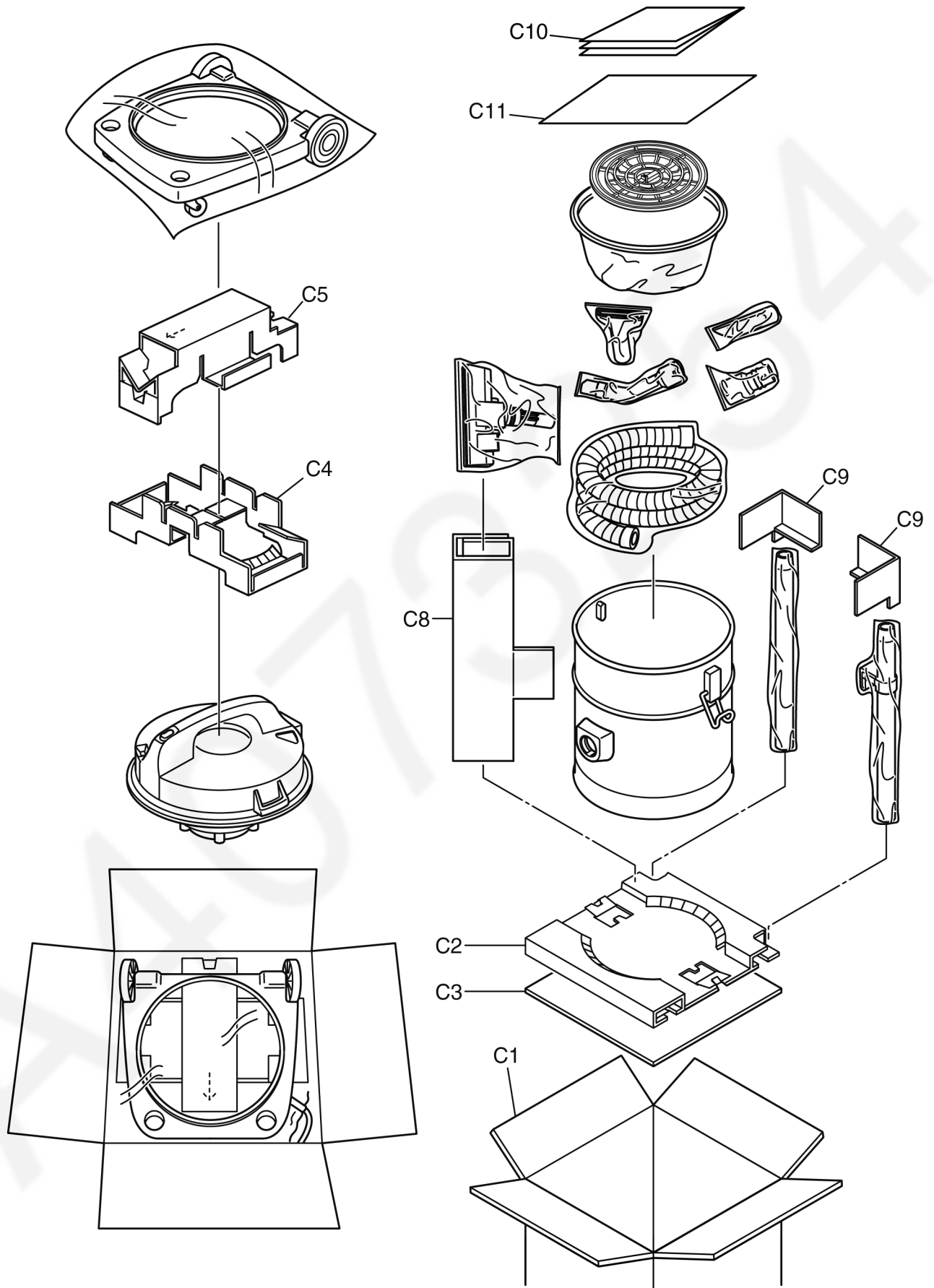
### 8.3. EXPLODED VIEW (BODY UNIT)



## 8.4. PARTS LIST (BODY UNIT)

| Safety | Ref.No | Service Parts No. | Part Name & Description        | Q'TY | Remarks                     |
|--------|--------|-------------------|--------------------------------|------|-----------------------------|
|        | B1     | AMV01BLD0K0J      | HANDLE                         | 1    | (CARRYING HANDLE)           |
|        | B2     | AMV92ALV0K0J      | BODY COVER UNIT                | 1    | (MOTOR HOUSING)             |
|        | B3     | AMV85LLD000J      | EXHAUST PACKING UNIT           | 1    |                             |
| ⚠      | B4     | AMV98ELD000J      | MAIN SWITCH UNIT               | 1    |                             |
|        | B5     | AMV96LLD0K0J      | BLOWER OUTLET UNIT             | 1    | WITH COVER SPRING           |
|        | B7     | XTT4+20BFJ        | TRUSS SCREW                    | 2    |                             |
| ⚠      | B8     | AMV91NLD0K5J      | CORD REEL PARTITION UNIT       | 1    | MC-YL799-N147/MC-YL799-N747 |
| ⚠      | B8     | AMV91NLD0K0J      | CORD REEL PARTITION UNIT       | 1    | MC-YL799-N149 ONLY          |
|        | B9     | AMV46NLD0Y0J      | CORD REWIND BUTTON             | 1    |                             |
|        | B10    | AMV71NBW000J      | SPRING BRAKE BUTTON            | 1    |                             |
| ⚠      | B13    | AMC0NA-ZK0        | GLASS TAPE                     | 1    |                             |
|        | B14    | AMV0NA81000J      | NOISE SUPPRESSOR UNIT          | 1    |                             |
|        | B15    | AMV0AF99000J      | MOTOR SUPPORT RUBBER REAR UNIT | 1    |                             |
| ⚠      | B16    | AMV92FB7000J      | FAN MOTOR UNIT                 | 1    | AC220V-240V                 |
|        | B17    | AMC02FQU000J      | MOTOR SUPPORT RUBBER FRONT     | 1    |                             |
|        | B19    | AMV99M81000J      | INDICATOR PIPE UNIT            | 1    | (VAC GAUGE)                 |
|        | B21    | AMV02ALD0K0J      | UPPER BODY                     | 1    |                             |
|        | B22    | XTN4+25BFJ        | SCREW                          | 4    |                             |
|        | B23    | AMC30K-QN0        | FILTER                         | 1    | (SECONDARY FILTER)          |
|        | B24    | AMV18KFP000J      | EXPANDER                       | 1    |                             |
|        | B25    | AMV99K810H0J      | CLOTH BAG UNIT                 | 1    | (FILTER)                    |
|        | B26    | AMV0QALV0K0J      | LOWER BODY ASSY                | 1    |                             |
|        | B27    | AMV99D810K0J      | BUCKLE UNIT                    | 2    | (CLAMP)                     |
|        | B28    | XTN4+12BFJ        | SCREW                          | 4    |                             |
|        | B29    | AMV32D81000J      | BUCKLE PLATE                   | 2    |                             |
|        | B30    | AMV01HLD0K0J      | FRONT COVER                    | 1    | (HOSE INLET)                |
|        | B31    | AMV50KLD0K0J      | VALVE GROMMET                  | 1    |                             |
|        | B32    | XTT35+16BFJ       | SCREW                          | 3    |                             |
|        | B33    | AMC56HQN000J      | GROUNDING CHAIN                | 1    |                             |
|        | B34    | XYN3+F8FJ         | SCREW                          | 1    |                             |
|        | B35    | XNG3EFJ           | NUT                            | 1    |                             |
|        | B36    | XTN4+16BFJ        | SCREW                          | 2    |                             |
|        | B41    | AMC95C0E0K0J      | CASTER UNIT                    | 2    |                             |
|        | B42    | AMC26C-B00        | CASTER WASHER                  | 2    |                             |
|        | B43    | AMV94ALD0K0J      | FRAME UNIT                     | 1    | (DOLLY)                     |

## 8.5. PACKING INSTRUCTIONS



## 8.6. PACKING LIST

| Safety | Ref.No | Service Parts No. | Part Name & Description | Q'TY | Remarks |
|--------|--------|-------------------|-------------------------|------|---------|
|        | C1     | AMV61ZLV0N0J      | INDIVIDUAL CARTON       | 1    |         |
|        | C2     | AMV63ZLV000J      | BOTTOM PLATE            | 1    |         |
|        | C3     | AMC56Z-QN0        | CUSHION BOTTOM          | 1    |         |
|        | C4     | AMV70ZLV000J      | CUSHION B               | 1    |         |
|        | C5     | AMV69ZLV000J      | CUSHION A               | 1    |         |
|        | C8     | AMV78ZLV000J      | SUPPORTER               | 1    |         |
|        | C9     | AMV72ZLV000J      | CUSHION PLATE A         | 2    |         |
|        | C10    | AMV01ZLV000J      | INSTRUCTION BOOK        | 1    |         |
|        | C11    | AMV21ZLV000J      | NOTE LABEL              | 1    |         |
|        | -      | AMV10Z99000J      | BODY BAG                | 1    |         |