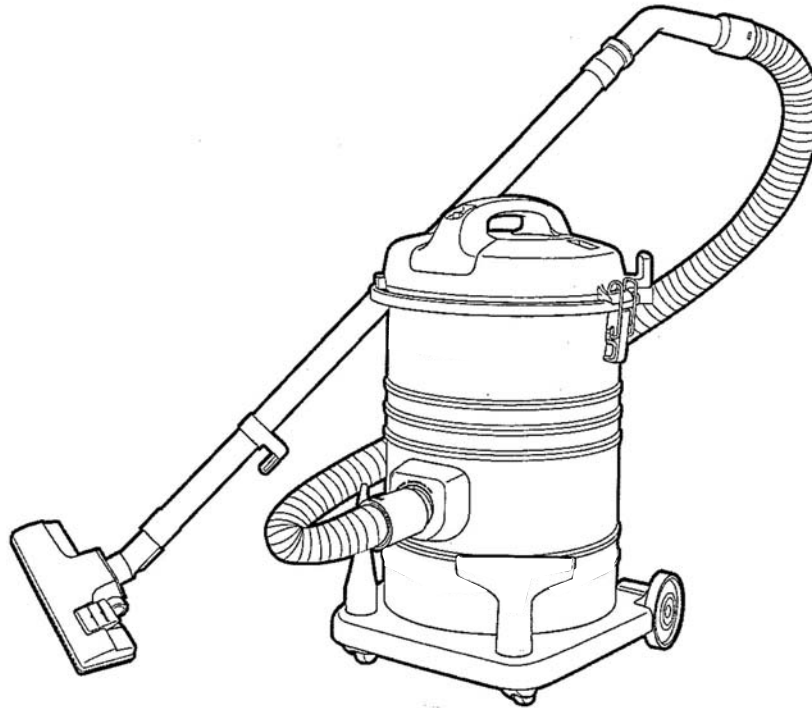


Service Manual

Vacuum Cleaner
MC-YL693K



SPECIFICATION

MODEL	MC-YL693K
POWER SOURCE	220V-240V
FREQUENCY (Hz)	50/60Hz, 50Hz
MOTOR POWER	1700W
DIMENSIONS (W x L x H)	550mmX390mmX330mm
NETT WEIGHT (kg)	6.7 kg
EXTENSION WANDS	METAL
FLOOR NOZZEL	BOTTOM PLASTIC
ATTACHMENTS	Hose, Extension Wand, Floor Nozzle, Curved Ward, Crevice Nozzle, Upholstery Nozzle

⚠ WARNING

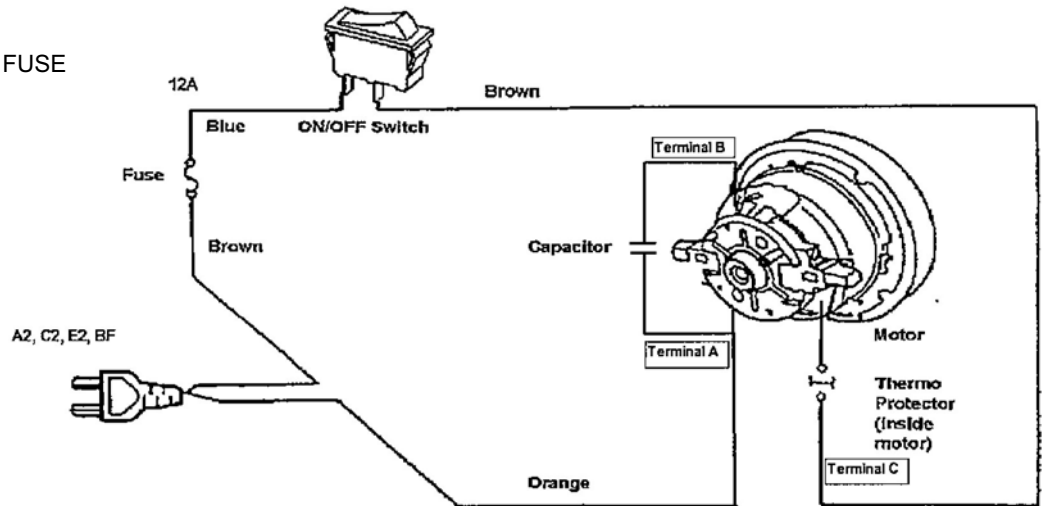
This service information is designed for experienced repair technicians only and is not designed for use by the general public. It does not contain warnings or cautions to advise non-technical individuals of potential dangers in attempting to service a product. Products powered by electricity should be serviced or repaired only by experienced professional technicians. Any attempt to service or repair the product or products dealt with in this service information by anyone else could result in serious injury or death.

Panasonic

© 2009 Panasonic Manufacturing Malaysia Berhad (6100-K). Unauthorized copying and distribution is a violation of law.

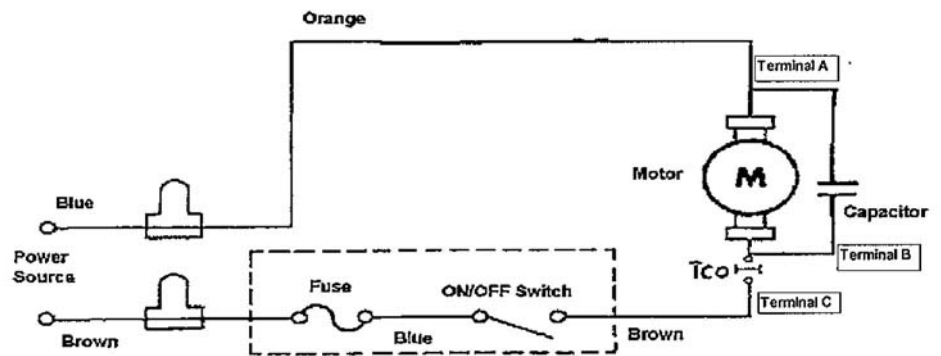
PICTORIAL DIAGRAM

AC220-240V 50/60Hz
 WITH CAPACITOR AND FUSE
 MODEL: MC-YL693K
 CORD: A2,C2,E2,BF

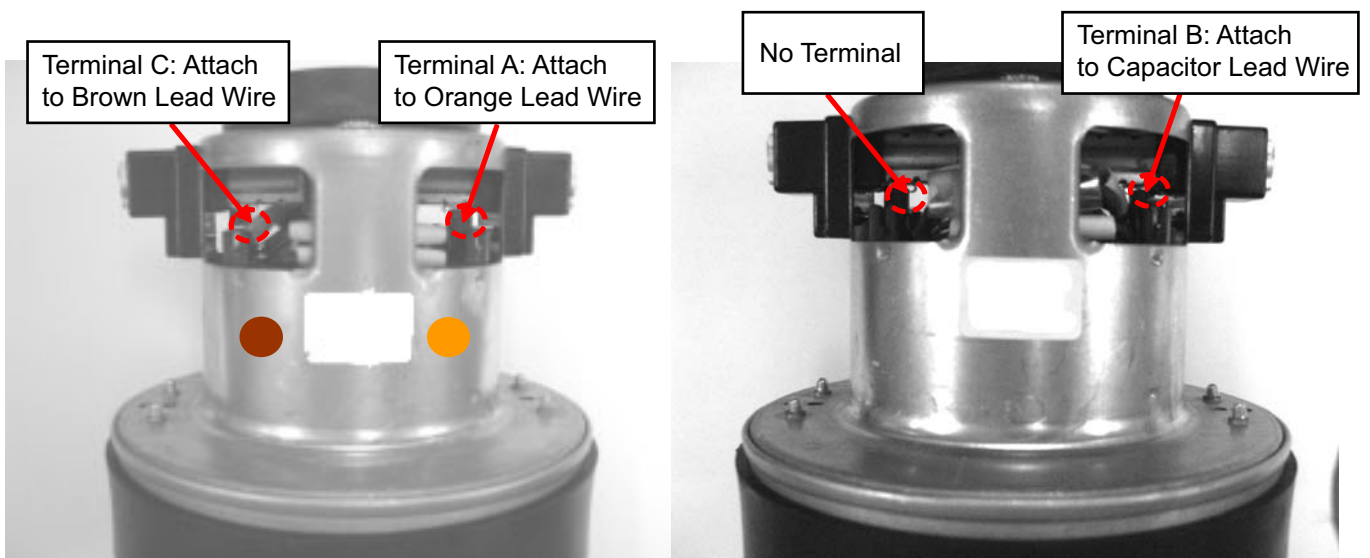


SCHEMATIC DIAGRAM

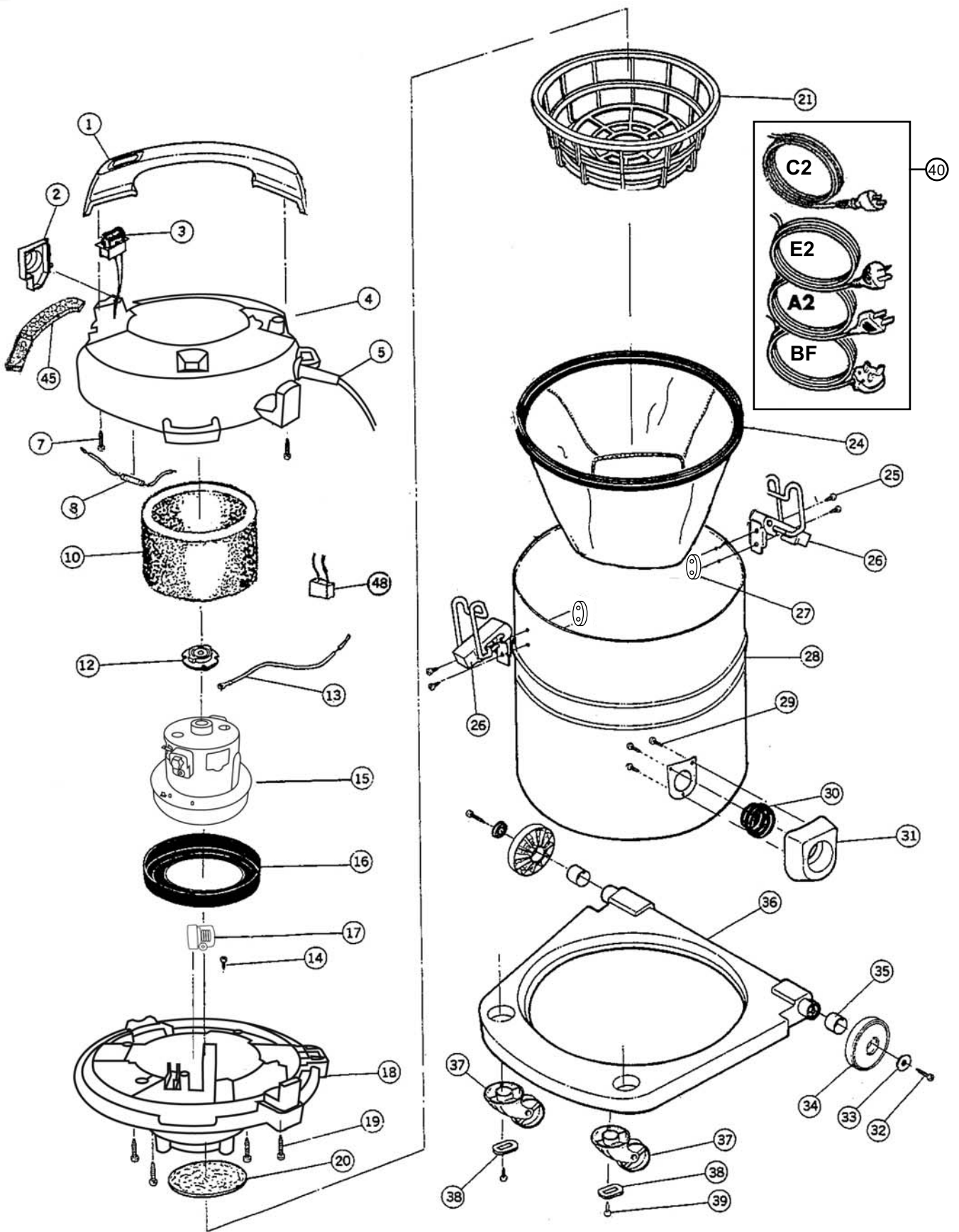
AC220-240V 50/60Hz
 WITH CAPACITOR AND FUSE
 MODEL: MC-YL693K
 CORD: A2,C2,E2,BF



MOTOR TERMINAL



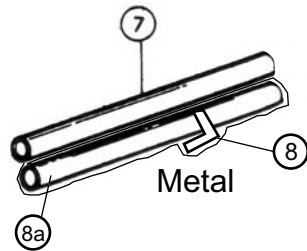
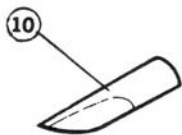
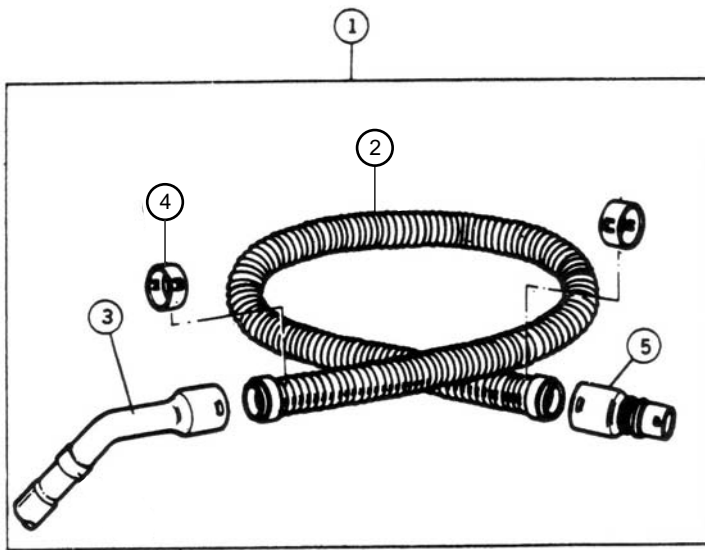
EXPLODED VIEW



REPLACEMENT PART LIST

REF. NO.	PART NAME	PART NO.	QTY	REMARKS
1	HANDLE	YMV01B810K0	1	
2	BLOWER OULET UNIT	YMC96LDD1V0	1	
3	MAIN SWITCH ASSY	YMV98E8100C	1	
4	BODY COVER UNIT	YMV24A810K0	1	
5	CORD BUSHING	YMC51EBY000	1	
7	TRUSS TAP SCREW	XTT4+20BFJ	2	
8	FUSE ASSY (12A)	YMV97W8100C	1	
10	NOISE ABSORBER UNIT	YMV99G81000	1	
12	REAR MOTOR SUPPORTER	YMC03FSG000	1	
13	BLACK LEAD WIRE	YMR083R170U	1	
14	PAN SCREW	XTN4+12BFJ	1	
15	MOTOR UNIT GY27 (1904)	YMV92F8000C	1	
16	FRONT MOTOR SUPPORT	YMC02FQU000	1	
17	INDICATOR PIPE UNIT	YMV99M7Y000	1	
18	UPPER BODY UNIT	YMV02A810K0	1	
19	PAN HEAD RECESS SCREW	XTN4+25BFJ	4	
20	FILTER	YMV30K81000	1	
21	EXPANDER	YMC18KDD000	1	
24	CLOTH BAG UNIT	YMV99K81000	1	
25	PAN HEAD RECESS SCREW	XTN4+12BFJ	4	
26	BUCKLE UNIT	YMV99D81000	2	
27	BUCKLE PLATE	YMV32D81000	2	
28	LOWER BODY 693	YMV03A7Z0G0	1	
29	TRUSS TAP SCREW	XTT35+16BFJ	3	
30	AIR VALVE GRAMMET	YMC50KJ3100	1	
31	FRONT COVER	YMC01HDD0K0	1	
32	PAN TAP SCREW	XTN4+16BFJ	2	
33	WHEEL CAP	YMC05CL91H0	2	
34	WHEEL	YMC01C941V0	2	
35	WHEEL SUPPORTER	YMC02C97000	2	
36	FRAME	YMC43A0E0K0	1	
37	CASTER UNIT	YMC95C0E1H0	2	
38	WASHER	YMC26CB0100	2	
39	PAN TAP SCREW	XTN4+16BFJ	2	
40	POWER CORD W/PLUG BF (1.00mm ²)	YMC93EVG108T	1	SAUDI, KUWAIT AND HONG KONG
40	POWER CORD W/PLUG C2 (1.00mm ²)	YMC96EVH10LT	1	EGYPT, FIJI AND SINGAPORE, GENERAL MIDDLE EAST
40	POWER CORD W/PLUG E2 (1.00mm ²)	YMC91EVG00ET	1	IRAN
40	POWER CORD W/PLUG A2 (1.00mm ²)	YMC97ENS20BT	1	THAILAND
45	OUTLET FILTER	YMV30L81000	1	
48	CAPACITOR (0.22)	YMV46F61000	1	

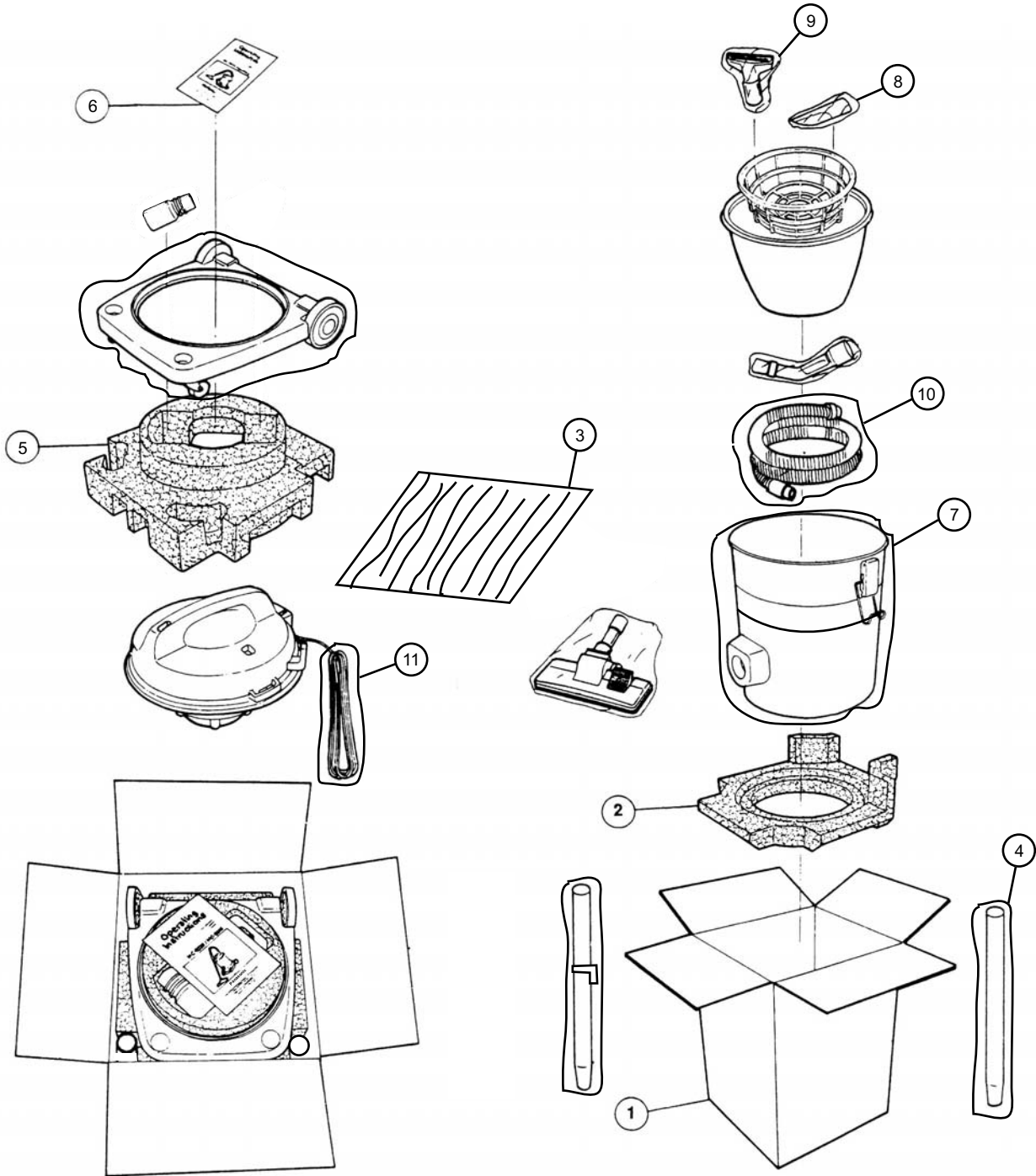
EXPLODE VIEW (ATTACHMENT)



ATTACHMENT PART LIST

REF. NO.	PART NAME	PART NO.	QTY	REMARKS
1	HOSE ASSY	YMC94PDD0V0	1	
2	HOSE	AMC01PDD0V0	1	
3	CURVED WAND UNIT	YMC98P4Y000	1	
4	HOSE SUPPORTER	AMC24P-0R0V0	2	
5	CONNECTION PIPE	YMC02P0R0V0	1	
7	EXTENSION WAND UNIT	YMC40PQN000	1	METAL
8	EXTENSION WAND HOLDER	YMV70P81000	1	
8a	EXTENSION WAND	YMV99P7Z000	1	
9	UPHOLSTERY NOZZLE	YMC68R861V0	1	
10	CREVICE NOZZLE	YMC60R0G2V0	1	
11	FLOOR NOZZLE ASSY	YMC99RXQ000	1	

PACKING INSTRUCTION



PACKING LIST

REF. NO.	PART NAME	PART NO.	QTY	REMARKS
1	CARTON BOX 693	YMV61Z7Z000	1	
1	CARTON BOX 693 EGYPT	YMV61Z7Z00X	1	
2	CUSHION BOTTOM	YMV70Z81000	1	
3	PE LINER	YMC79ZVH000	1	
4	EXTENSION WAND BAG	YMV14Z81000	1	
5	CUSHION TOP	YMV69Z81000	1	
6	INSTRUCTION MANUAL	YMV01Z8100C	1	MIDLE EAST & EGYPT
6	INSTRUCTION MANUAL	YMV01Z8100B	1	ASIA
7	BODY BAG	YMV10Z81000	1	
8	CREVICE NOZZLE BAG	YMV20Z81000	1	
9	UPHOSTERY NOZZLE BAG	YMV37Z81000	1	
10	HOSE BAG	YMV11Z81000	1	
11	POWER CORD BAG	YMV19Z81000	1	