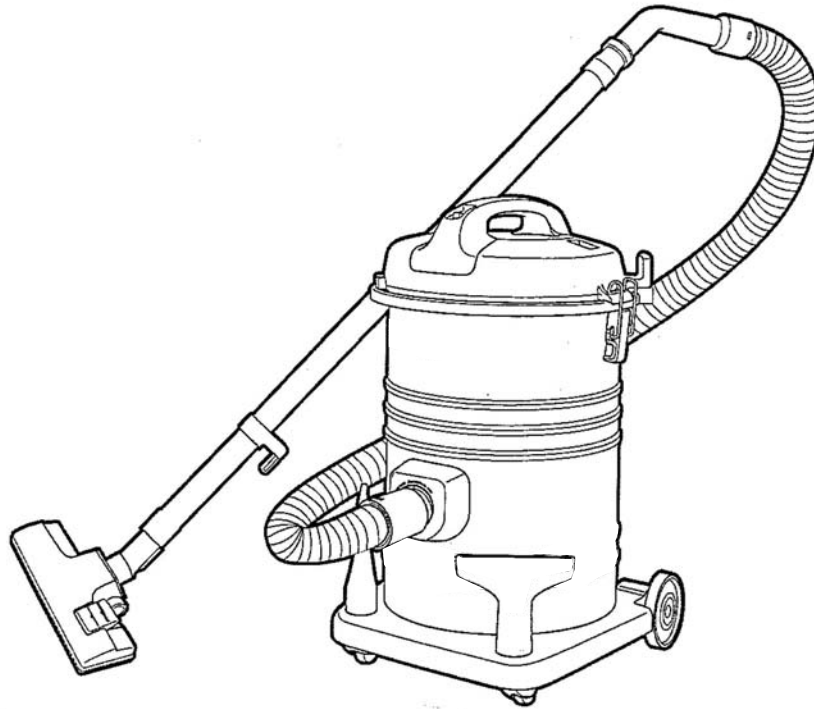


Service Manual

Vacuum Cleaner MC-YL691/MC-YL691K/MC-YL690K



SPECIFICATION

MODEL	MC-YL691	MC-YL691K	MC-YL690K
POWER SOURCE	127V	220V~240V	
FREQUENCY (Hz)	50/60Hz	50/60Hz, 50Hz	
MOTOR POWER	1500W		
DIMENSIONS (W x L x H)	550mm x 390mm x 330mm		
NETT WEIGHT (kg)	6.0 kg	6.5 kg	
CORD LENGTH	8.0m		6.0m
EXTENSION WANDS	METAL		PLASTIC
DUST CAPACITY	15.0 Liters		
ATTACHMENTS	Hose, Extension Wand, Floor Nozzle, Curved Ward, Crevice Nozzle, Upholstery Nozzle		

WARNING

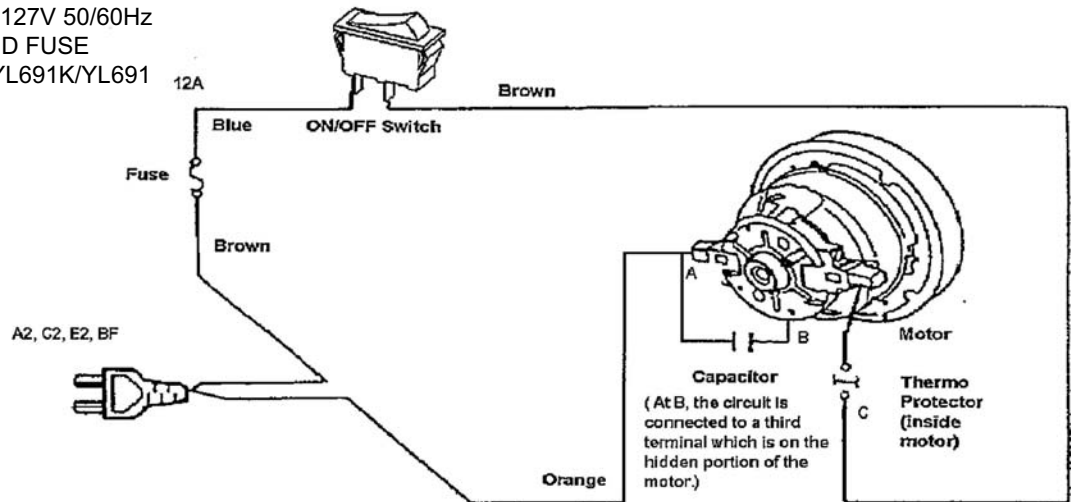
This service information is designed for experienced repair technicians only and is not designed for use by the general public. It does not contain warnings or cautions to advise non-technical individuals of potential dangers in attempting to service a product. Products powered by electricity should be serviced or repaired only by experienced professional technicians. Any attempt to service or repair the product or products dealt with in this service information by anyone else could result in serious injury or death.

Panasonic

© 2009 Panasonic Manufacturing Malaysia Berhad (6100-K). Unauthorized copying and distribution is a violation of law.

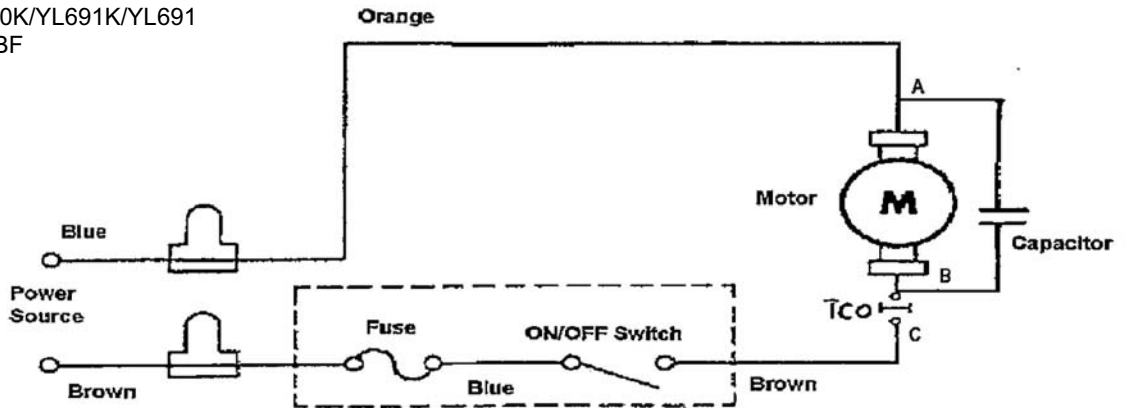
PICTORIAL DIAGRAM

AC220-240V 50/60Hz, 127V 50/60Hz
 WITH CAPACITOR AND FUSE
 MODEL: MC-YL690K/YL691K/YL691
 CORD: A2,C2,E2,BF

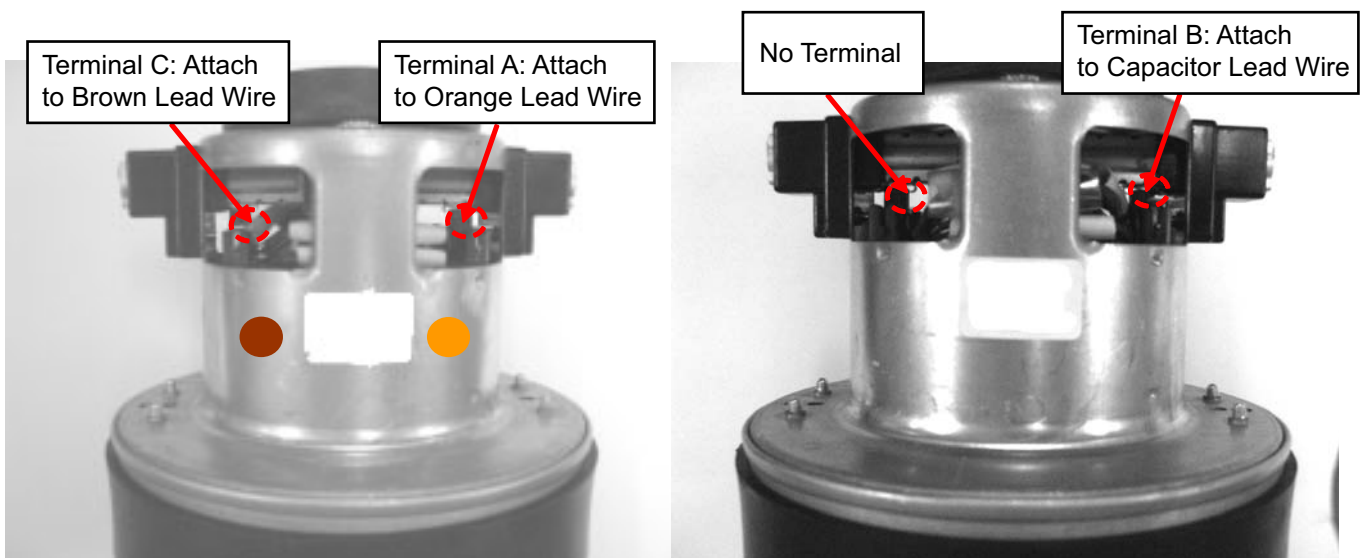


SCHEMATIC DIAGRAM

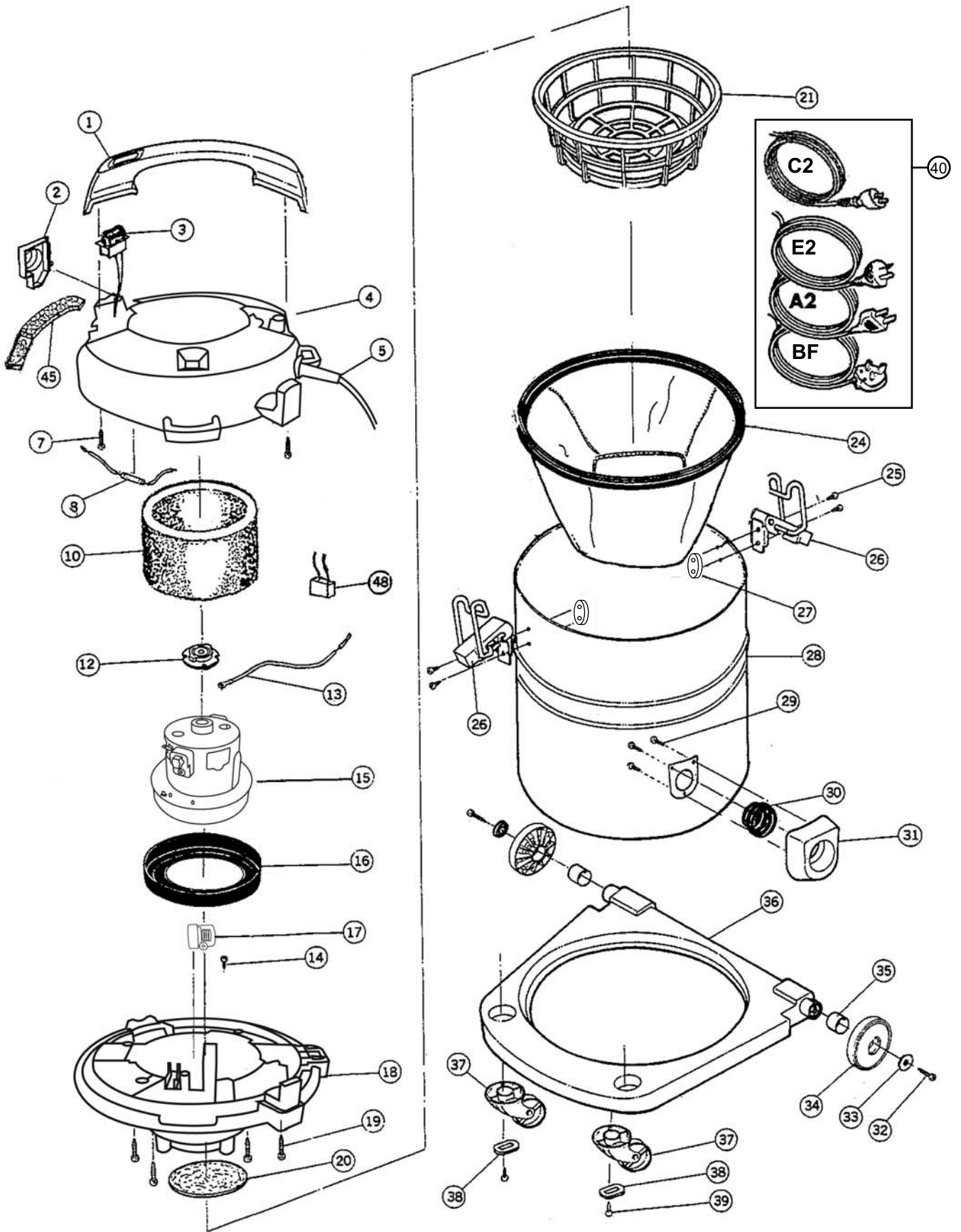
AC220-240V 50/60Hz, 127V 50/60Hz
 WITH CAPACITOR AND FUSE
 MODEL: MC-YL690K/YL691K/YL691
 CORD: A2,C2,E2,BF



MOTOR TERMINAL



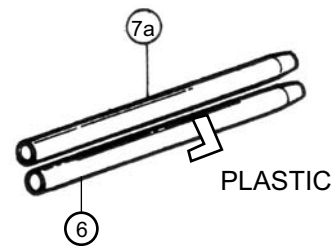
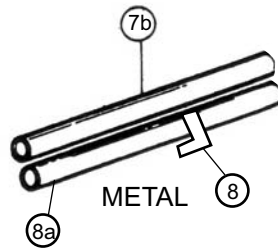
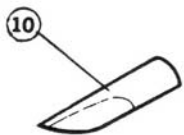
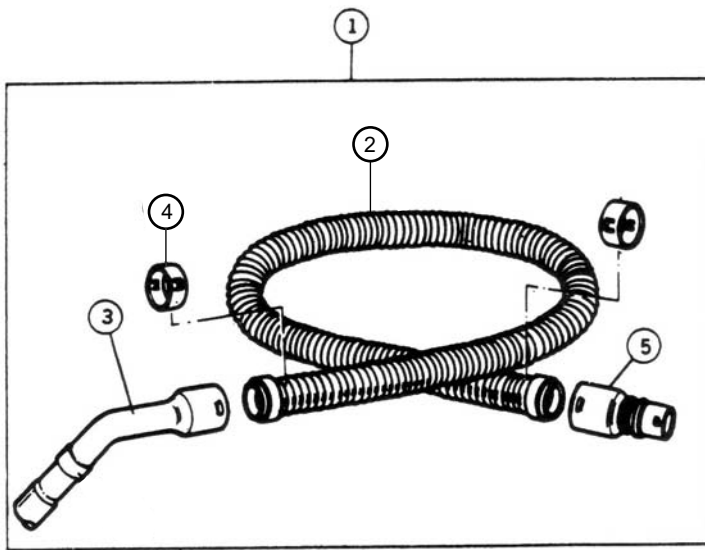
EXPLODED VIEW



REPLACEMENT PART LIST

REF. NO.	PART NAME	PART NO.	MODEL			REMARKS
			MC-YL691	MC-YL691K	MC-YL690K	
1	HANDLE	YMV01B810K0	1	1	1	BLACK
2	BLOWER OULET UNIT	YMC96LDD1V0	1	1	1	BLACK
3	MAIN SWITCH ASSY	YMV98E8100C	-	1	1	
3	MAIN SWITCH ASSY	YMV98E7Y00A	1	-	-	
4	BODY COVER	YMV24A810K0	-	1	1	
4	BODY COVER	YMV24A7Y0K0	1	-	-	
5	CORD BUSHING	YMC51EBY000	1	1	1	
7	TRUSS TAP SCREW	XTT4+20BFJ	2	2	2	
8	FUSE UNIT (12A)	YMV97W8100C	-	1	1	
8	FUSE UNIT(15A)	YMV97W7Y00A	1	-	-	
10	NOISE ABSORBER UNIT	YMV99G81000	1	1	1	
12	REAR MOTOR SUPPORTER	YMC03FSG000	-	1	1	
13	BLACK LEAD WIRE	YMR083R170U	-	1	1	
13	BLUE LEAD WIRE	YMR083R170B	1	-	-	
14	PAN SCREW	XTN4+12BFJ	1	1	1	
15	MOTOR UNIT (1405)	YMV92F7Y004	1	-	-	
15	MOTOR UNIT (1704)	YMV92F7Y00C	-	1	1	
16	FRONT MOTOR SUPPORT	YMC02FQU000	-	1	1	
16	FRONT MOTOR SUPPORT	YMC02FYX000	1	-	-	
17	INDICATOR PIPE UNIT	YMV99M7Z000	-	1	1	
17	INDICATOR PIPE UNIT	YMV99M7Y000	1	-	-	
18	UPPER BODY	YMV02A810K0	1	-	1	
18	UPPER BODY	YMV02A7Z0K0	-	1	-	
19	PAN HEAD RECESS SCREW	XTN4+25BFJ	4	4	4	
20	FILTER	YMV30K81000	1	1	1	
21	EXPANDER	YMC18KDD000	1	1	1	
24	CLOTH BAG UNIT	YMV99K81000	-	1	1	
25	PAN HEAD RECESS SCREW	XTN4+12BFJ	4	4	4	
26	BUCKLE UNIT	YMV99D81000	2	2	2	
27	BUCKLE KNOB	YMV32D81000	2	2	2	
28	LOWER BODY 691	YMV03A7Y0R0	1	1	-	RED
28	LOWER BODY 690	YMV03A7X0B0	-	-	1	BLUE
29	TRUSS TAP SCREW	XTT35+16BFJ	3	3	3	
30	VALVE GRAMMET	YMC50KJ3100	1	1	1	
31	FRONT COVER	YMC01HDD0K0	1	1	1	BLACK
32	PAN TAP SCREW	XTN4+16BFJ	2	2	2	
33	WHEEL CAP	YMC05CL91H0	2	2	2	
34	WHEEL	YMC01C941V0	2	2	2	
35	WHEEL SUPPORTER	YMC02C97000	2	2	2	
36	FRAME	YMC43A0E0K0	1	1	1	BLACK
37	CASTER UNIT	YMC95C0E1H0	2	2	2	
38	WASHER	YMC26CB0100	2	2	2	
39	PAN TAP SCREW	XTN4+16BFJ	2	2	2	
40	POWER CORD W/PLUG BF (1.00mm ²)	YMC93EVG108T	-	1	-	SAUDI, KUWAIT AND HONG KONG
40	POWER CORD W/PLUG C2 (1.00mm ²)	YMC96EVH10LT	-	1	-	EGYPT, FIJI AND SINGAPORE
40	POWER CORD W/PLUG E2 (1.00mm ²)	YMC91EVG10ET	-	1	-	IRAN
40	POWER CORD W/PLUG A2 (1.00mm ²)	YMC97EVH10BT	-	1	1	THAILAND
40	POWER CORD W/PLUG BF (1.00mm ²)	YMV93E7X008T	-	-	1	SAUDI, KUWAIT AND HONG KONG
40	POWER CORD W/PLUG C2 (1.00mm ²)	YMV96E7X00LT	-	-	1	MIDDLE EAST GENERAL & SINGAPORE
40	POWER CORD W/PLUG E2 (1.00mm ²)	YMV91E7X00ET	1	-	1	IRAN
40	POWER CORD W/PLUG A2 (1.5mm ²)	YMC97EF104	1	-	-	SAUDI
40	POWER CORD W/PLUG A2 (1.5mm ²)	YMC97E8100B	-	-	1	THAILAND
45	OUTLET FILTER	YMV30L8100	-	1	-	
45	OUTLET FILTER	YMV30L7X000	1	-	1	
48	CAPACITOR (0.22)	YMV46F61000	1	1	1	

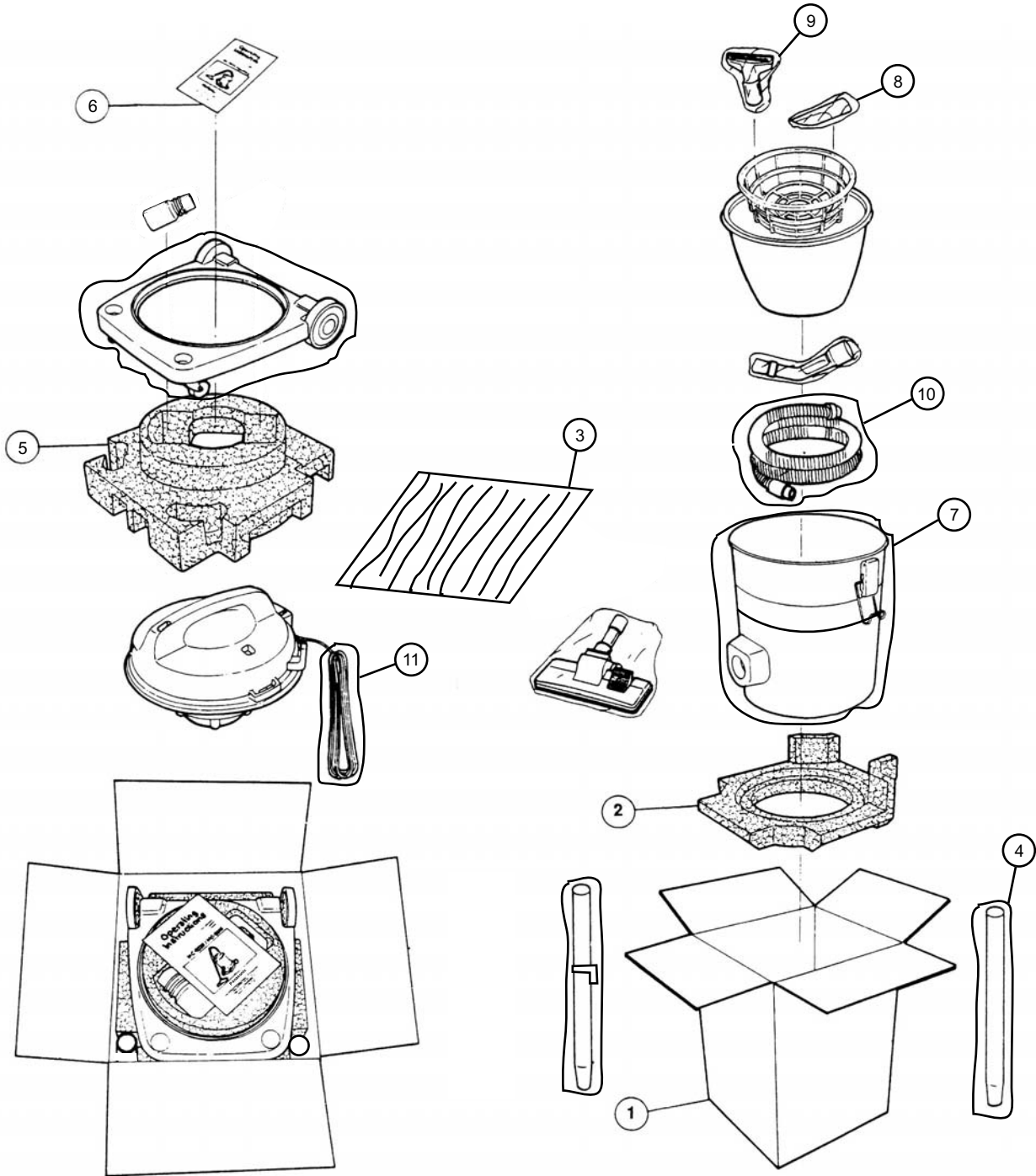
EXPLODE VIEW (ATTACHMENT)



ATTACHMENT PART LIST

REF. NO.	PART NAME	PART NO.	MODEL			REMARKS
			MC-YL691	MC-YL691K	MC-YL690K	
1	HOSE ASSY	YMC94PDD0V0	1	1	1	
2	HOSE	AMC01PDD0V0	1	1	1	
3	CURVED WAND UNIT	YMC98P4Y000	1	1	1	
4	HOSE SUPPORTER	AMC24P-0R0V0	2	2	2	
5	CONNECTION PIPE	YMC02P0R0V0	1	1	1	
6	EXTENSION WAND UNIT	YMV99P7X0V0	1	1	1	PLASTIC
7a	EXTENSION WAND	YMV407X0V0	-	-	1	PLASTIC
7b	EXTENSION WAND	YMV407V000	1	1	1	METAL
8	EXTENSION WAND HOLDER	YMV70P81000	1	1	1	
8a	EXTENSION WAND UNIT	YMV70P7Y000	1	-	-	
9	UPHOLSTERY NOZZLE	YMC68R861V0	1	1	1	
10	CREVICE NOZZLE	YMC60R0G2V0	1	1	1	
11	FLOOR NOZZLE ASSY	YMC99RXQ000	1	1	1	

PACKING INSTRUCTION



PACKING LIST

REF. NO.	PART NAME	PART NO.	MODEL			REMARKS
			MC-YL691	MC-YL691K	MC-YL690K	
1	CARTON BOX 691	YMV61Z7Y000	1	1	-	
1	CARTON BOX 691 EGYPT	YMV61Z7Y00X	1	1	-	EGYPT
1	CARTON BOX 690	YMV61Z7X000	-	-	1	
2	CUSHION BOTTOM	YMV70Z81000	1	1	1	
3	PE LINER	YMC792VH000	1	1	1	
4	EXTENSION WAND BAG	YMV14Z81000	1	1	1	
5	CUSHION TOP	YMV69Z81000	1	1	1	
6	INSTRUCTION MANUAL	YMV01Z8100C	1	1	1	
6	INSTRUCTION MANUAL	YMV01Z8100B	1	1	-	SINGAPORE, THAILAND, HONG KONG AND VIETNAM
7	BODY BAG	YMV10Z81000	1	1	1	
8	CREVICE BAG	YMV20Z81000	1	1	1	
9	UPHOSTERY BAG	YMV37Z81000	1	1	1	
10	HOSE BAG	YMV11Z81000	1	1	1	
11	POWER CORD BAG	YMV19Z81000	1	1	1	