

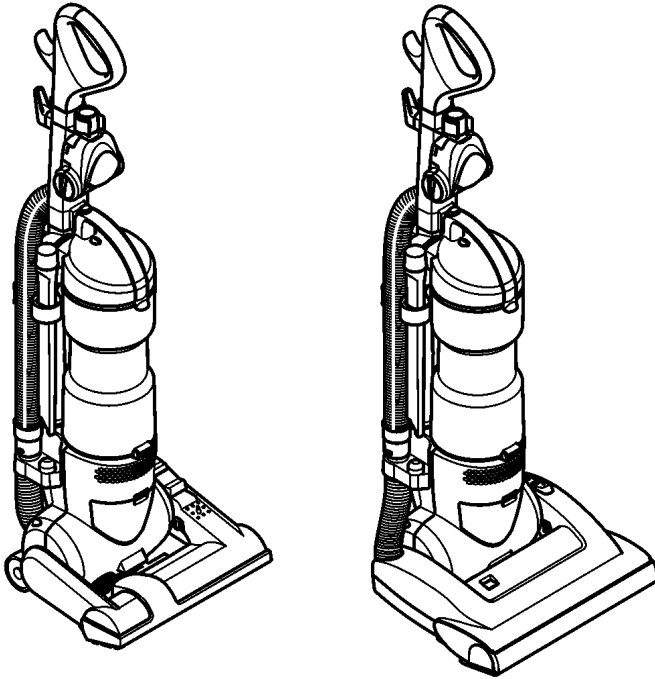
Service Manual

Vacuum Cleaner

MC-UL424-00 MC-UL426-00

Product Color: White (MC-UL424-00)
Black (MC-UL426-00)

Destination: United Kingdom



Model	MC-UL424-00	MC-UL426-00
Power Source	AC 240V (50 Hz)	AC 240V (50 Hz)
Power Consumption	1200W	1400W
Cord Length	7.6 m (25 ft.)	7.6 m (25 ft.)
Nozzle Width	33.0 cm (13 in.)	35.5 cm (14 in.)
Bare Floors	Yes	Yes
Weight	6.8 kg (15.0 lbs.)	7.3 kg (16.0 lbs.)

Specifications are subject to change without notice for further improvement.

⚠ WARNING

This service information is designed for experienced repair technicians only and is not designed for use by the general public. It does not contain warnings or cautions to advise non-technical individuals of potential dangers in attempting to service a product. Products powered by electricity should be serviced or repaired only by experienced professional technicians. Any attempt to service or repair the product or products dealt with in this service information by anyone else could result in serious injury or death.

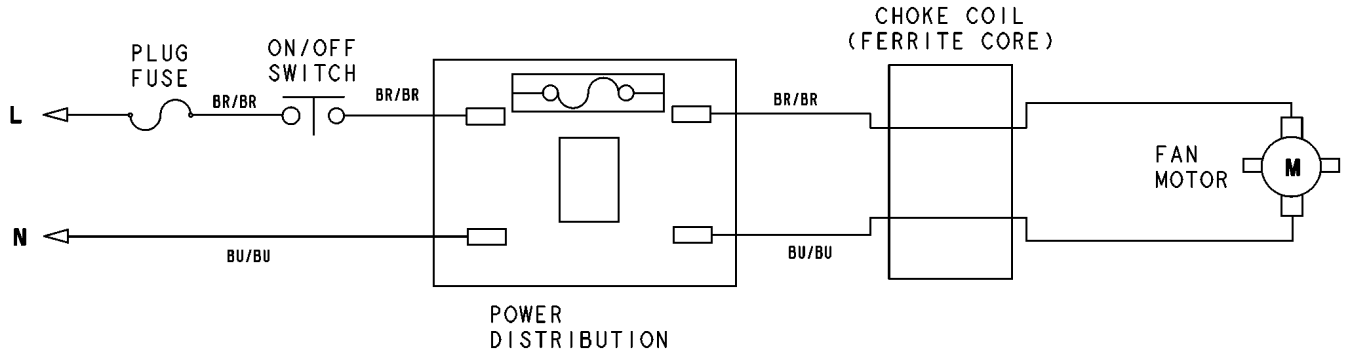
CONTENTS

	Page		Page
1 WIRING SCHEMATICS	3	3.2. Power Cord	17
1.1. Wiring Diagram	3	3.3. On/Off Switch	18
1.2. Wire Management Drawings	4	4 SERVICE PROCEDURES - NOZZLE (MC-UL424)	19
2 EXPLODED VIEW AND PARTS LIST	7	4.1. Lower Plate	19
2.1. Upper Body	7	4.2. Agitator	20
2.2. Lower Body	8	5 SERVICE PROCEDURES - NOZZLE (MC-UL426)	21
2.3. Nozzle Housing (MC-UL424)	10	5.1. Nozzle cover	21
2.4. Nozzle Housing (MC-UL426)	11	5.2. Agitator / Belt Replacment	21
2.5. Handle Assembly	13	5.3. Belt	22
2.6. Dust Bin Assembly	14	5.4. Nozzle Motor	23
2.7. Packing Materials	15	5.5. Overload Protector	24
3 SERVICE PROCEDURES - BODY	16	5.6. PCB	24
3.1. Motor	16		

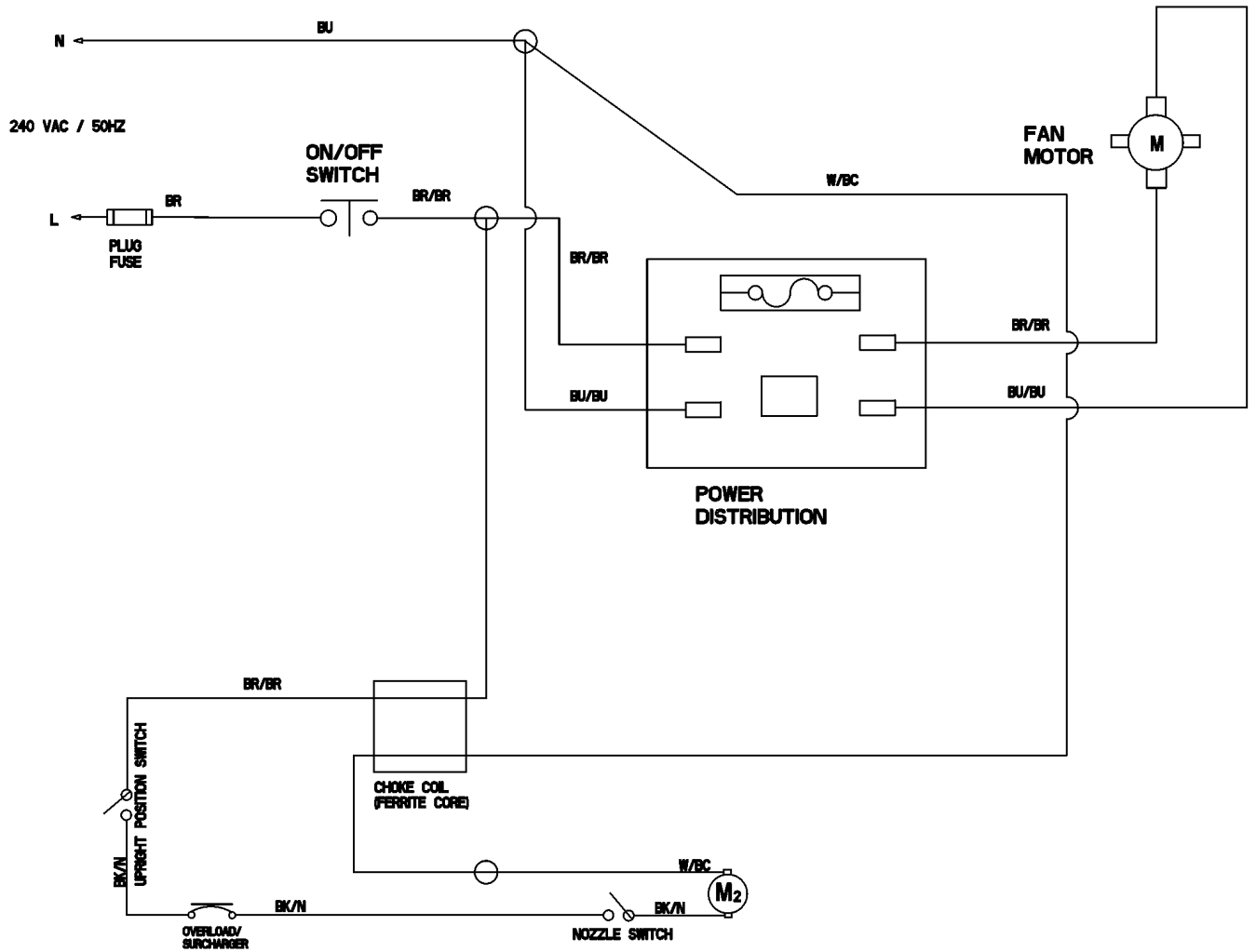
1 WIRING SCHEMATICS

1.1. Wiring Diagram

1.1.1. MC-UL424



1.1.2. MC-UL426



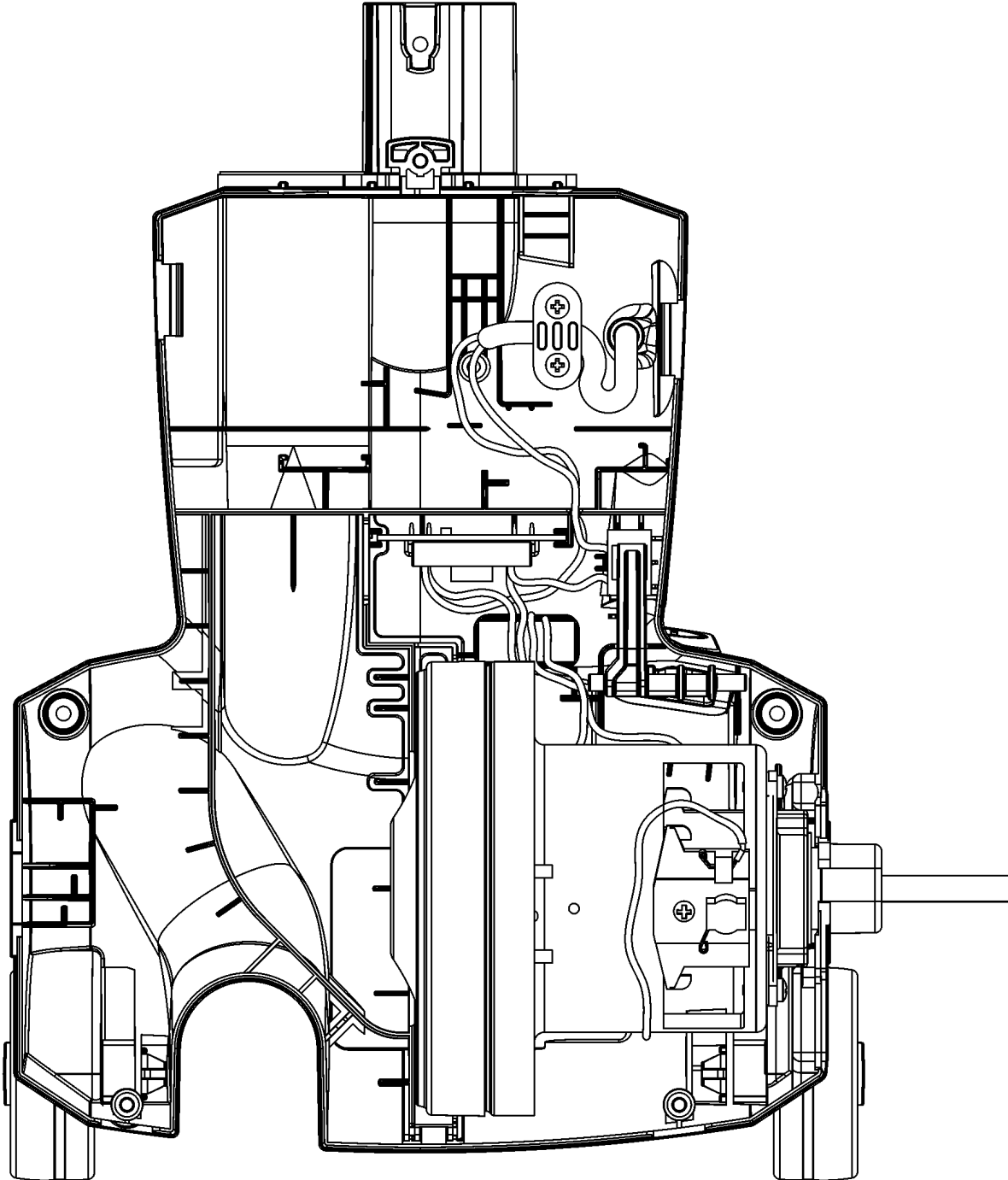
1.2. Wire Management Drawings

NOTE:

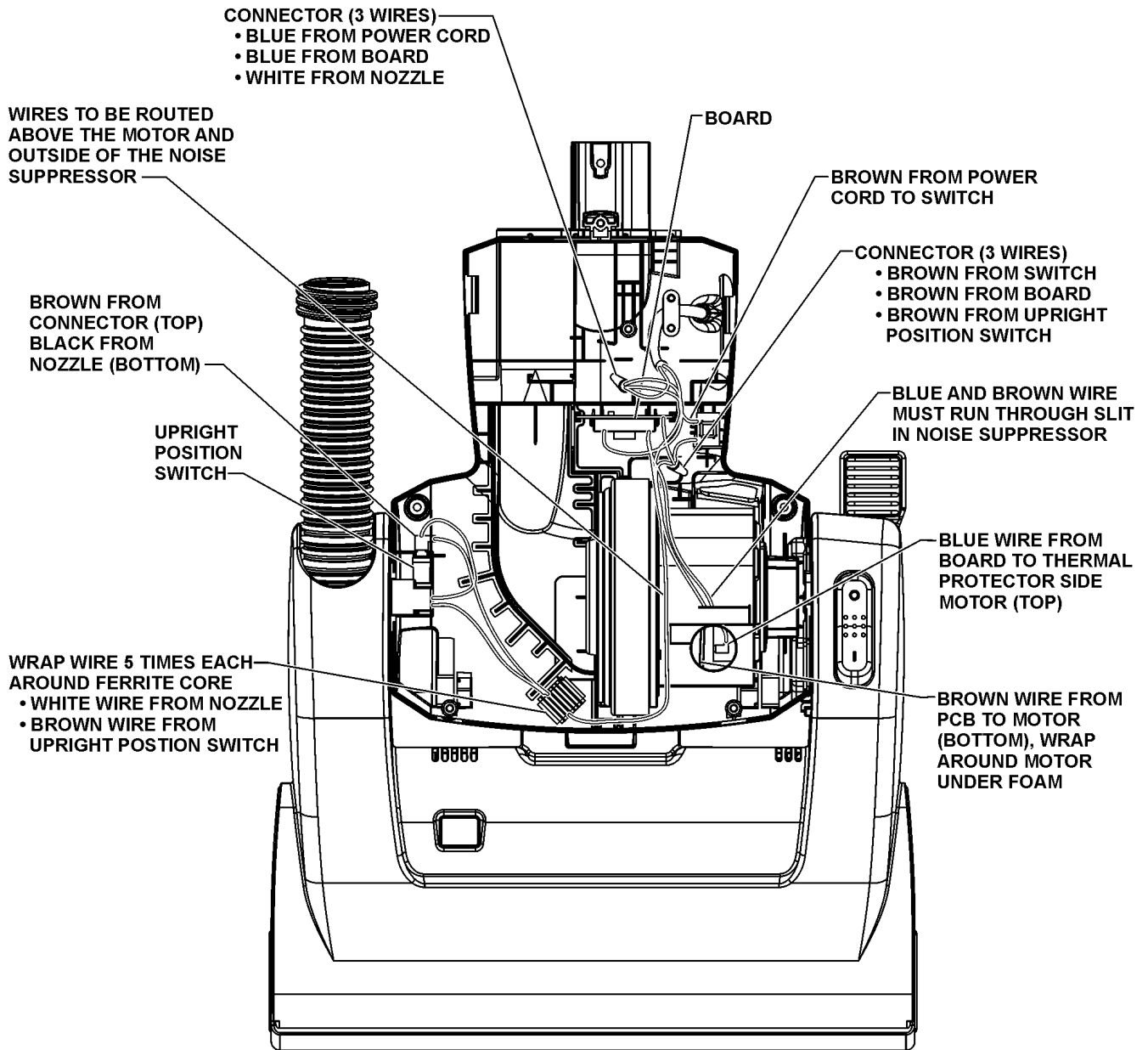
For general servicing, it is necessary to eliminate pinching of any wire during reassembly. After servicing any electrical component or electrical enclosure, the unit should be reassembled and checked for dielectric breakdown or current leakage.

Use part number AC79FCWZZ000 (FIBERGLASS CLOTH TAPE) whenever original tape is removed.

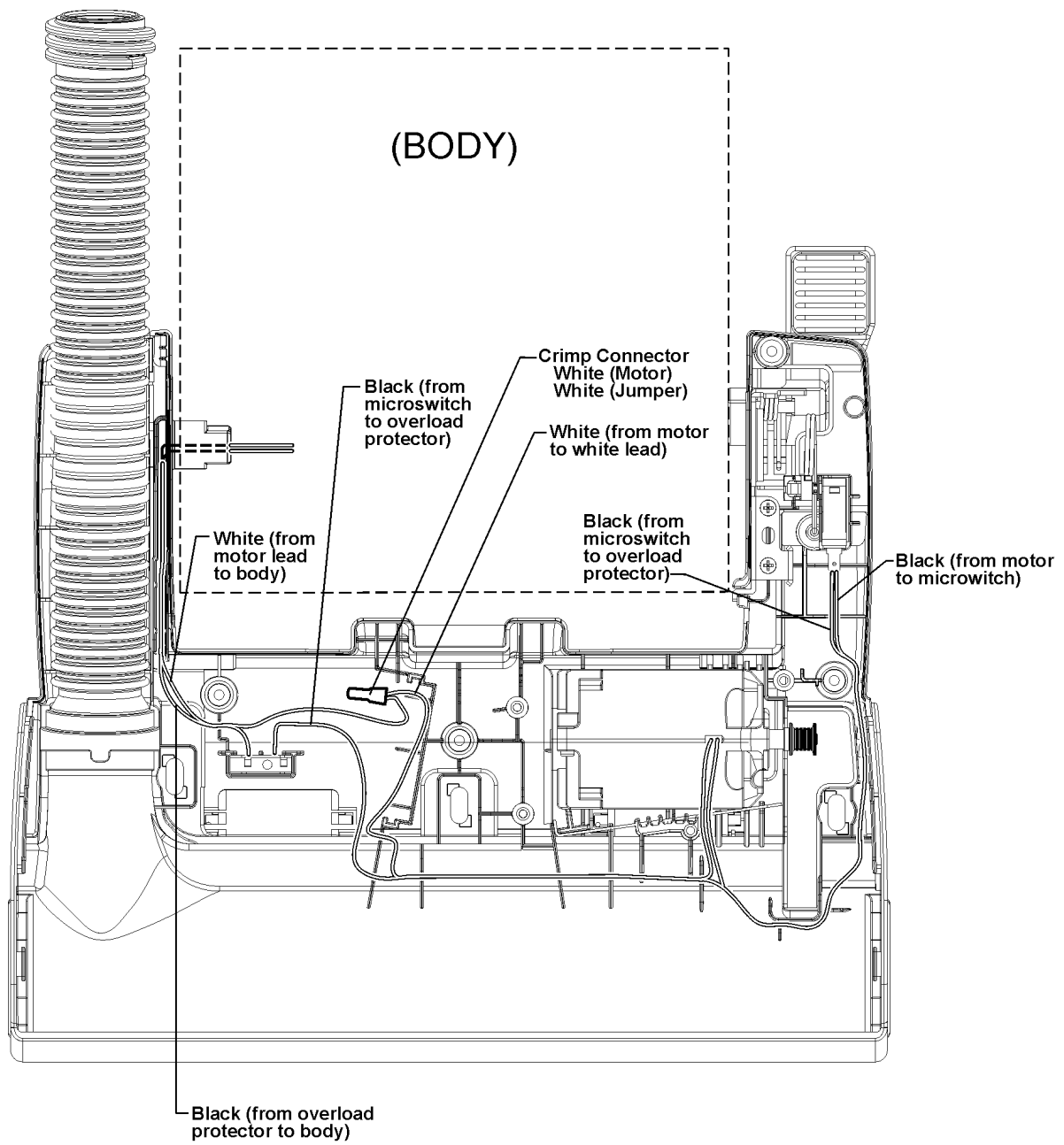
1.2.1. BODY (MC-UL424)



1.2.2. BODY (MC-UL426)



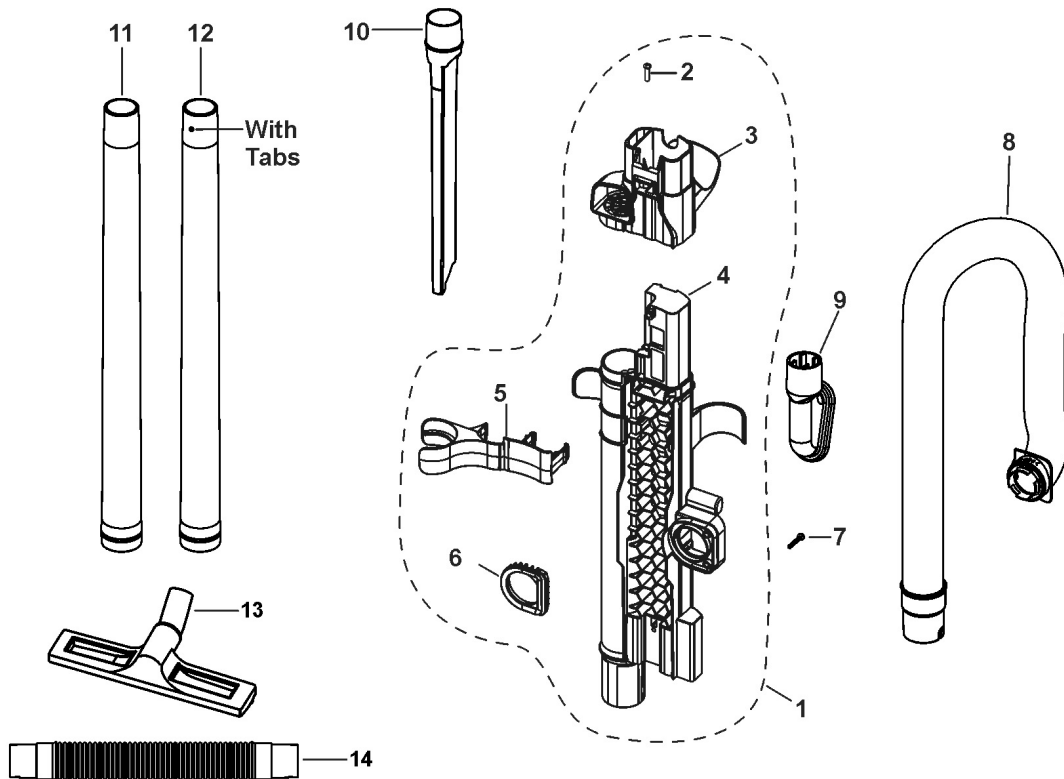
1.2.3. Nozzle (MC-UL426 only)



2 EXPLODED VIEW AND PARTS LIST

2.1. Upper Body

2.1.1. Exploded View

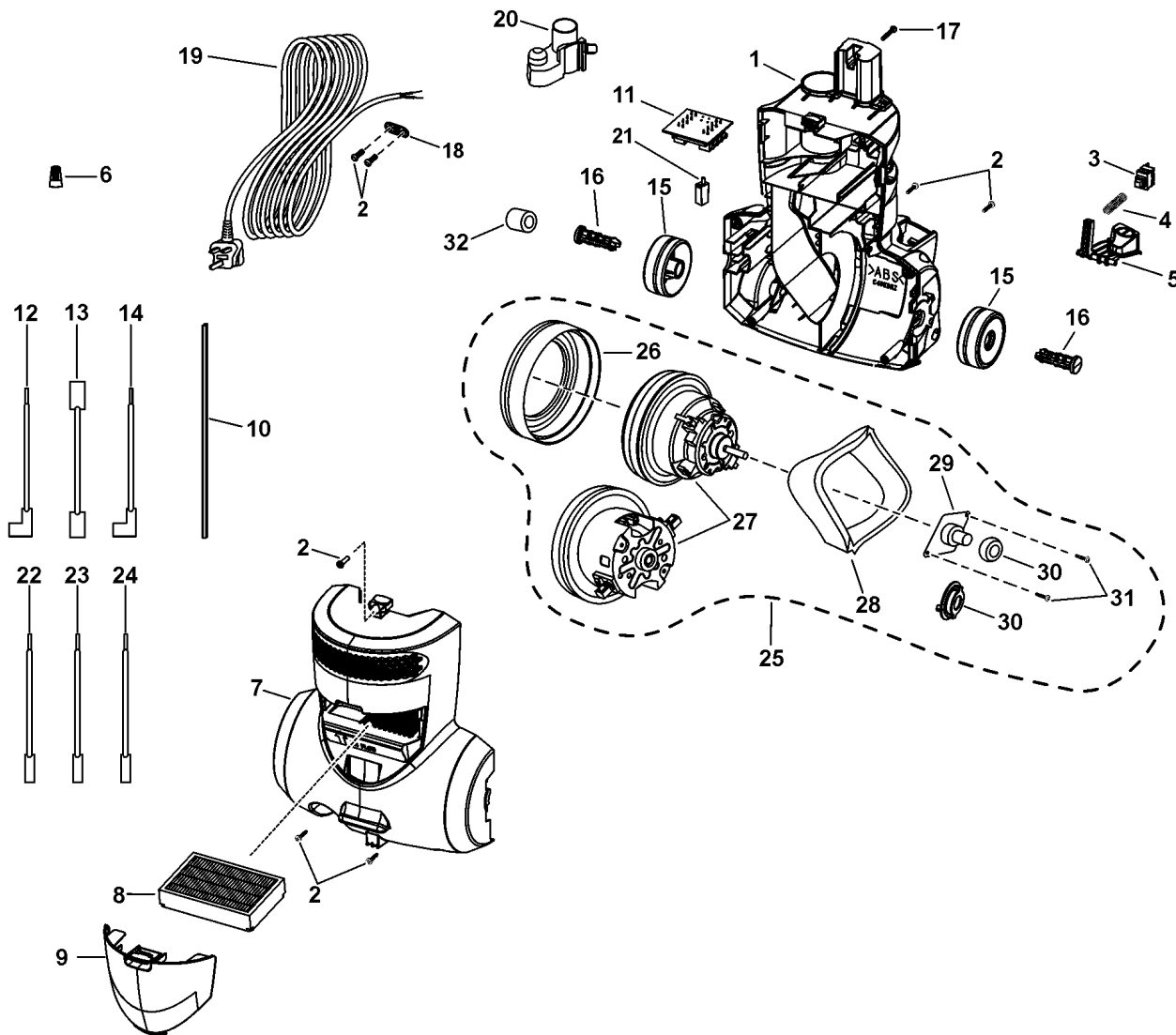


2.1.2. Parts List

Ref. No.	Part No.	Part Name & Description	Quantity	Remarks
1	AC98ADSAZV07	UPPER BODY UNIT	1	
2	AC38NCWZZ000	SCREW	1	
3	AC12ADRZZV07	BODY CAP	1	
4	AC21ADSAZV07	REAR BODY	1	
5	AC70PDRZZV07	WAND HOLDER	1	
6	AC45KDRZZU00	VALVE GROMMET	1	
7	AC73BZAZ000	SCREW	1	
8	AC84PDRZZU03	HOSE UNIT	1	
9	AC88RYUZV07	DUSTING BRUSH	1	
10	AC60RZFZV07	CREVICE TOOL	1	
11	AC40PZGZV07	EXTENSION WAND	1	WITH TABS
12	AC40PJPZV07	EXTENSION WAND	1	WITHOUT TABS; MC-UL426
13	AC96RDVJZV06	FLOOR BRUSH	1	MC-UL426
14	AC84PDVJZU03	BONUS HOSE	1	MC-UL426

2.2. Lower Body

2.2.1. Exploded View



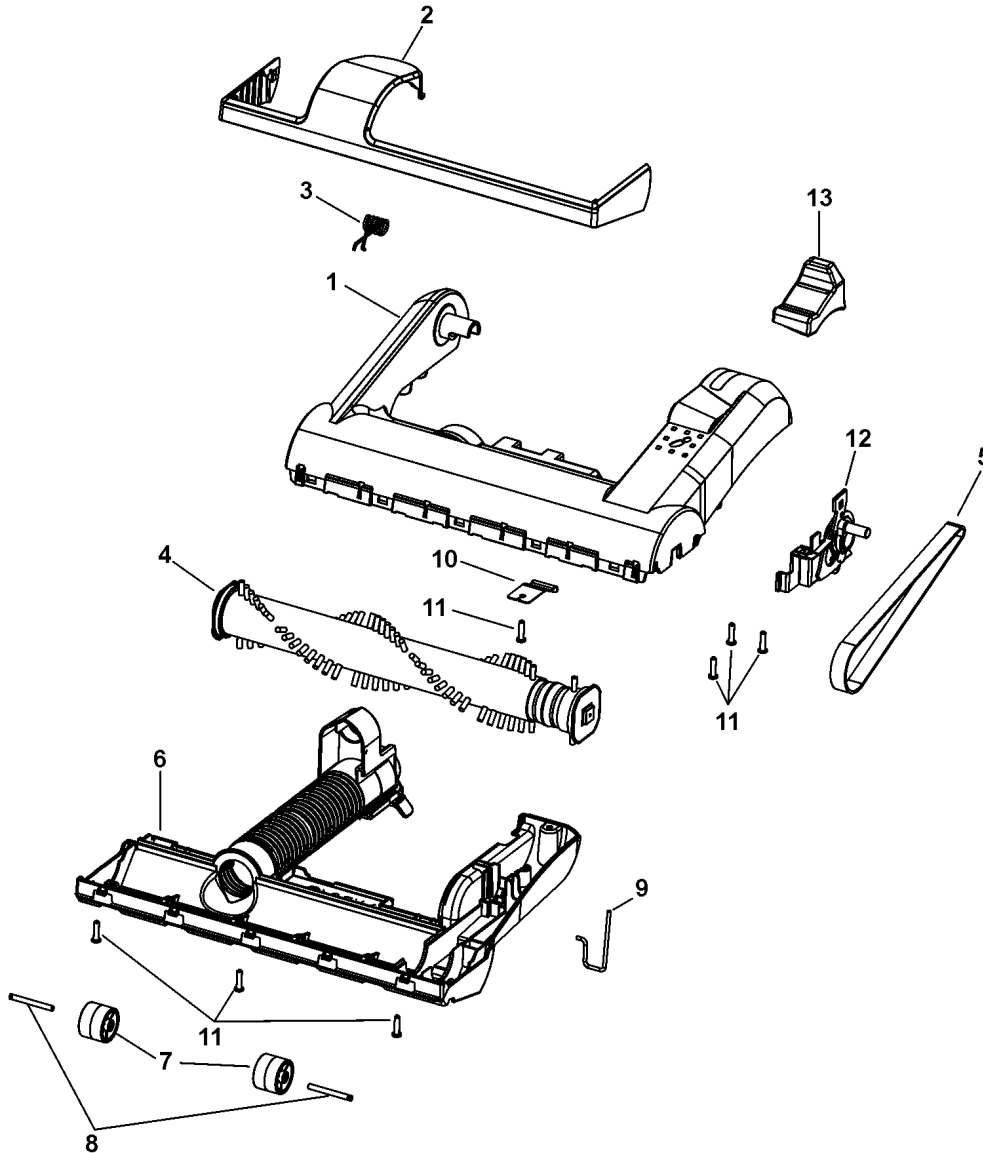
2.2.2. Parts List

Ref. No.	Part No.	Part Name & Description	Quantity	Remarks
1	AC40KDVJZV07	DUST COMPARTMENT	1	MC-UL424
1	AC40KDSZV07	DUST COMPARTMENT	1	MC-UL426
2	AC38NCWZZ000	SCREWS (10 PER BAG)	7	Shipped 10 per package
3	AC01EDRZZ000	ON/OFF SWITCH	1	
4	AC47NATCZ00	SPRING	1	
5	AC05EDRZZV04	SWITCH PEDAL BUTTON	1	
6	AMC-1CTCE23	WIRE CONNECTOR	1	
7	AC60KDRZZW0N	DUST COVER	1	MC-UL424
7	AC60KDSZV03	DUST COVER	1	MC-UL426
8	AC38KDDJZ000	EXHAUST FILTER - HEPA	1	
9	AC41KDRZZW0N	FILTER COVER - DECO	1	MC-UL424
9	AC41KDRZZU03	FILTER COVER - DECO	1	MC-UL426
10	AC19ADHJZ000	BODY PACKING	1	
11	AC76FDSA000	OVERLOAD PROTECTOR	1	
12	AC80GDVNZ000	LEAD WIRE (BROWN)	1	
13	AC80GDMZ000	LEAD WIRE (BROWN)	1	MC-UL424
13	AC80GDSA000	LEAD WIRE (BROWN)	1	MC-UL426
14	AC82GDVNZ000	LEAD WIRE (BLUE)	1	MC-UL426
15	AC01CDSAZV07	WHEEL UNIT	2	
16	AC02CDRZZV07	WHEEL SUPPORTER	2	
17	AC73BZAZ000	HANDLE SCREW	1	
18	AC62ECWZZ000	CORD STOPPER	1	

Ref. No.	Part No.	Part Name & Description	Quantity	Remarks
19	AC97EDVNZ000	POWER CORD	1	MC-UL424
19	AC97EDVJZ000	POWER CORD	1	MC-UL426
20	AC23PDRZZV07	HOSE HOLDER	1	MC-UL426
21	AC98EYUZ00	MAIN SWITCH	1	MC-UL426
22	AC82GDVJZ000	LEAD WIRE (BLUE)	1	MC-UL426
23	AC80GDVJZ000	LEAD WIRE (BROWN)	1	MC-UL426
24	AC80GDSBZ000	LEAD WIRE (BROWN)	1	MC-UL426
25	AC98FDSCZ000	MOTOR ASSEMBLY	1	MC-UL424
25	AC98FDVJZ000	MOTOR ASSEMBLY	1	MC-UL426
26	AC02FDRZZ000	MOTOR SUPPORT RUBBER (FRONT)	1	MC-UL424
26	AC02FDSCZ000	MOTOR SUPPORT RUBBER (FRONT)	1	MC-UL426
27	AC92FDSBZ000	FAN MOTOR	1	MC-UL424
27	AC92FDVNZ000	FAN MOTOR	1	MC-UL426
28	AC99GAMMZ00	NOISE SUPPRESSOR	1	
29	AC25SCWZZ000	FLANGE	1	MC-UL424
30	AC03FAFYZ000	MOTOR SUPPORT RUBBER	1	MC-UL424
30	AC03FDMWZ000	MOTOR SUPPORT RUBBER	1	MC-UL426
31	AC68ACWZZ000	SCREW	1	MC-UL424; Shipped 10 per package
32	AC30VDRRZ000	CHOKE COIL	1	

2.3. Nozzle Housing (MC-UL424)

2.3.1. Exploded View

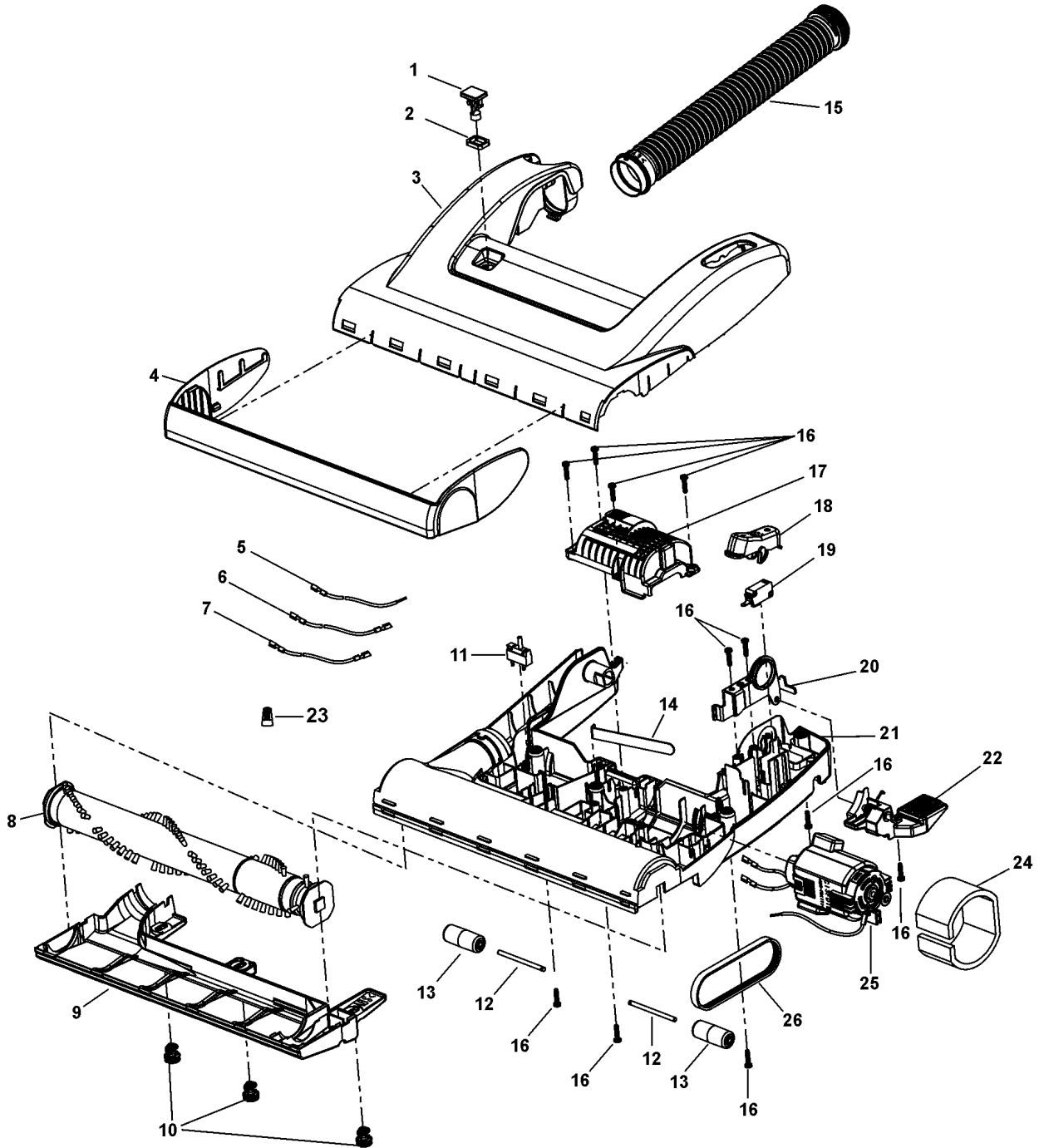


2.3.2. Parts List

Ref. No.	Part No.	Part Name & Description	Qty.	Remarks
1	AC01ADSCZWUN	BODY NOZZLE HOUSING (DECO)	1	
2	AC10ADRZZV07	FURNITURE GUARD	1	
3	AC58ACRYZ000	SPRING (NOZZLE)	1	
4	AC84RDVMZ000	AGITATOR ASSEMBLY	1	
5	AC28SDRZZ000	BELT	1	
6	AC91ADRZZV07	LOWER PLATE UNIT	1	
7	AC99QCYBZV06	WHEEL UNIT	2	
8	AC16CNXZ00	ROLLER SHAFT	2	
9	AC43SAFVZ000	BELT COVER	1	
10	AMC57A-V00	PEDAL SPRING	1	
11	AC38NCWZZ000	SCREW	7	Shipped 10 per package
12	AC92BAMAZ000	BELT SHIFTER ASSY	1	
13	AC42AAFYZV04	FOOT PEDAL COVER	1	

2.4. Nozzle Housing (MC-UL426)

2.4.1. Exploded View

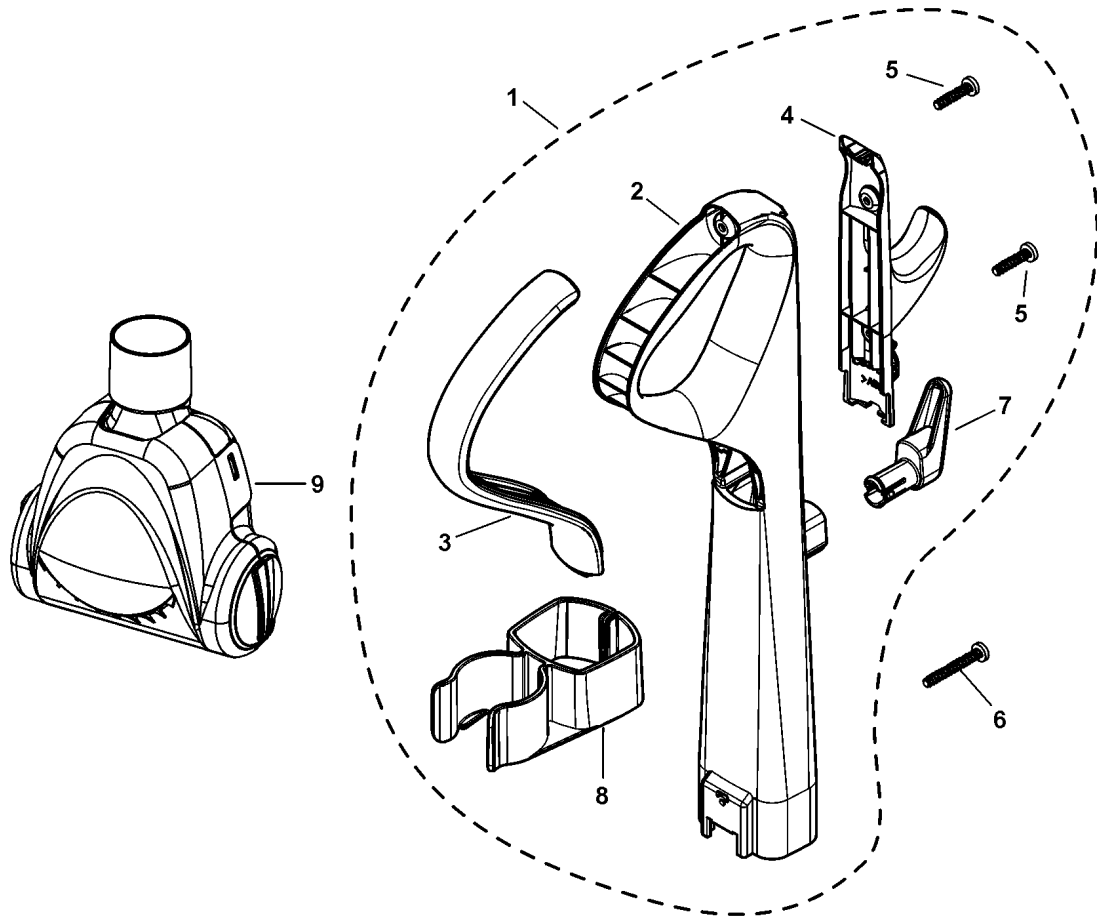


2.4.2. Parts List

Ref. No.	Part No.	Part Name & Description	Qty.	Remarks
1	AC13DDUWZGUU	BUTTON EXTENSION (DECO)	1	
2	AC75ACXWZ000	PACKING	1	
3	AC01ADVJZU03	BODY NOZZLE HOUSING (DECO)	1	
4	AC10ACXWZV07	FURNITURE GUARD	1	
5	AC85GDVJZ000	BLACK LEAD WIRE UNIT	1	
6	AC85WDVJZ000	LEAD WIRE UNIT (INDUCTOR)	1	
7	AC85GDKDZ000	BLACK LEAD WIRE UNIT	1	
8	AC92SDJSZ000	AGITATOR ASSEMBLY	1	
9	AC27ACXWZV07	LOWER PLATE	1	
10	AC08DDBVZV07	LATCH (NOZZLE)	3	
11	AC76FDRRZ000	OVERLOAD PROTECTOR	1	
12	AC16CBBRZ00	SHAFT (WHEEL) ASSEMBLY COMPLETE	2	
13	AC99CCXWZV07	WHEEL UNIT	2	
14	AMC742-002	MOTOR ADJUST SPRING	1	
15	AC34PDVNZV07	NOZZLE HOSE	1	
16	AC38NCWZZ000	SCREW	11	Shipped 10 per package
17	AC26FDTGZ000	MOTOR CAP	1	
18	AC05EDKEZG0U	SWITCH BUTTON	1	
19	AC98EYUZ00	ON/OFF SWITCH	1	
20	AMC43A-2V0	FRAME ASSEMBLY COMPLETE	1	
21	AC03ADVNZV07	LOWER BODY	1	
22	AC92BASPZV07	HANDLE RELEASE ASSEMBLY	1	
23	AMC-1CTCE23	WIRE CONNECTOR	1	
24	AC747156	MOTOR GASKET	1	
25	AC90FDRSZ000	MOTOR ASSEMBLY	1	
26	AC28SCXWZ000	BELT	1	

2.5. Handle Assembly

2.5.1. Exploded View

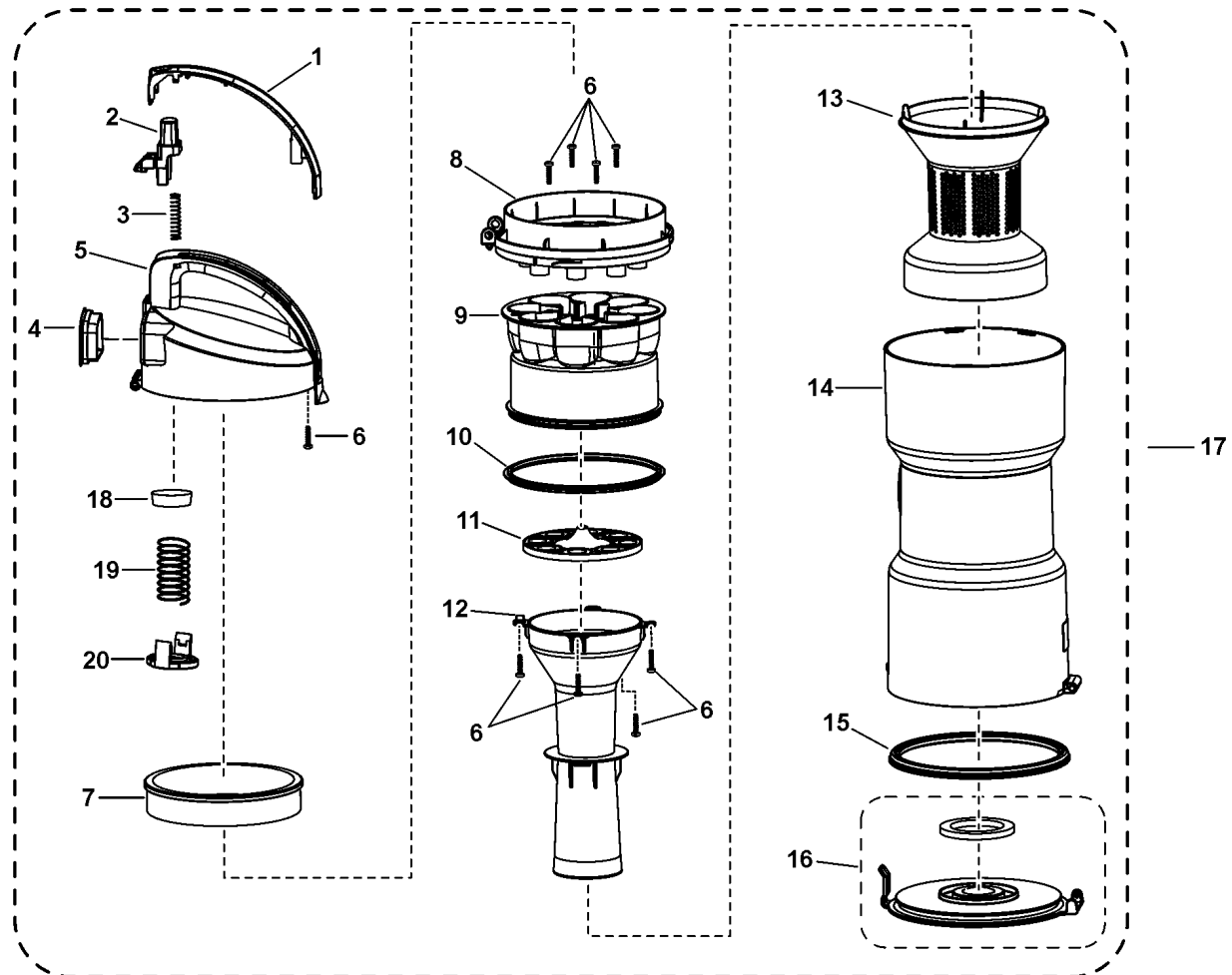


2.5.2. Parts List

Ref. No.	Part No.	Part Name & Description	Qty.	Remarks
1	AC95BDXPZW0N	HANDLE UNIT	1	MC-UL424
1	AC95BDXPZU03	HANDLE UNIT	1	MC-UL426
2	AC64BDSA ZV07	HANDLE	1	
3	AC50BDRZZW0N	HANDLE GRIP	1	MC-UL424
3	AC50BDRZZU03	HANDLE GRIP	1	MC-UL426
4	AC53PDVMZV07	HOSE HOOK / HOSE HANGER	1	
5	AC38NCWZZ000	SCREW	2	
6	AC73BAMAZ000	HANDLE SCREW	1	
7	AC53EZAZV07	UPPER CORD HOOK	1	
8	AC32RDRZZV07	ATTACHMENT HOLDER	1	
9	AC80SCRZZV0N	TURBINE UNIT	1	

2.6. Dust Bin Assembly

2.6.1. Exploded View

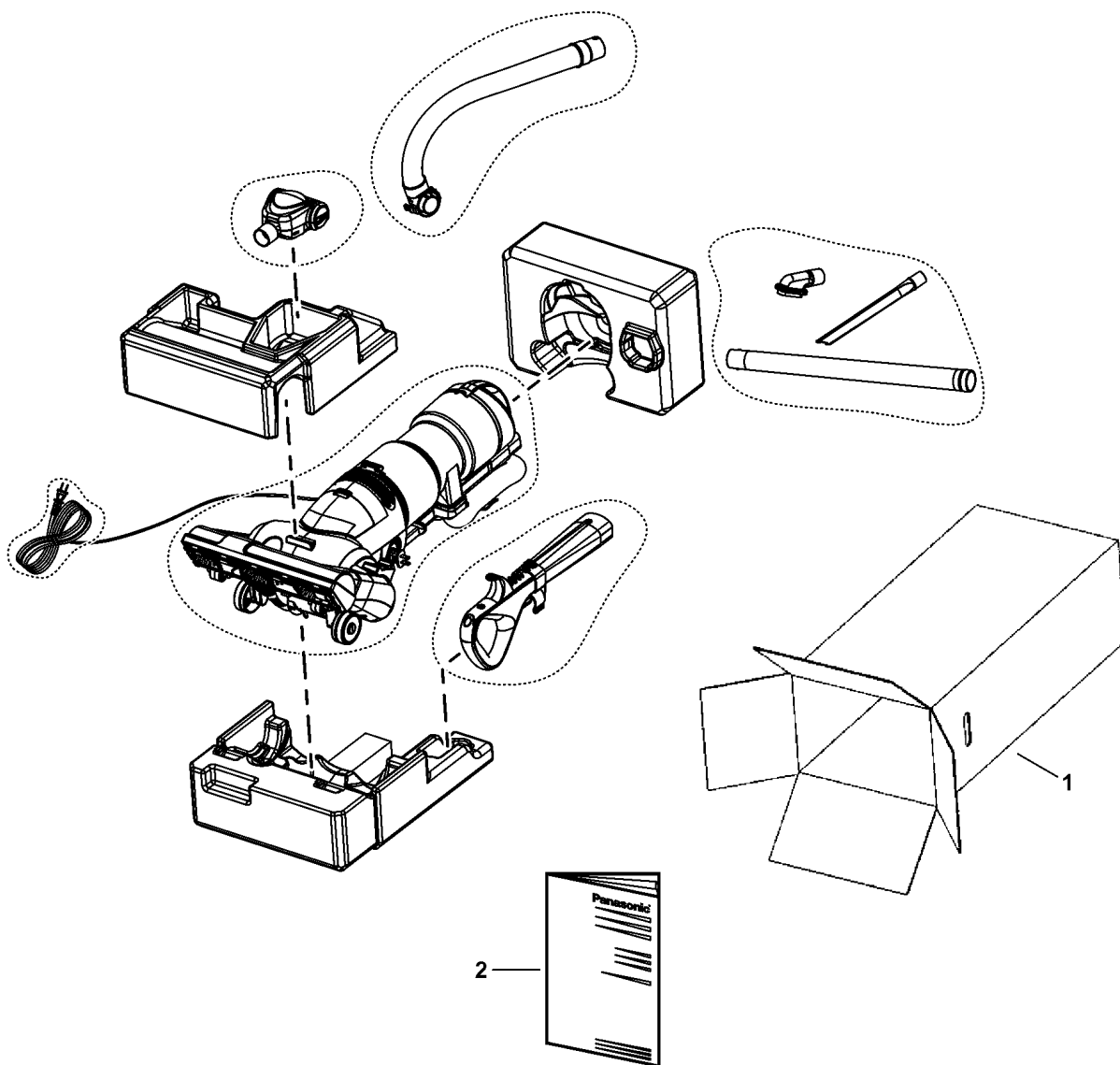


2.6.2. Parts List

Ref. No.	Part No.	Part Name & Description	Qty.	Remarks
1	AC14BDRZZW0N	HANDLE LID	1	MC-UL424
1	AC14BDRZZU03	HANDLE LID	1	MC-UL426
2	AC64NDMTZV04	PRESS BUTTON	1	
3	AC18DBRMZ000	SPRING (BUTTON RELEASE)	1	
4	AC45KDSAZU00	VALVE GROMMET	1	
5	AC20HDVJZWUN	LID (DECO)	1	MC-UL424
5	AC20HDVJZUU3	LID (DECO)	1	MC-UL426
6	AC38NCWZZ000	SCREW	9	
7	AC44KDSCZ000	FILTER	1	
8	AC75KDRZZW0N	DUST BOX TERMINAL	1	MC-UL424
8	AC75KDRZZU03	DUST BOX TERMINAL	1	MC-UL426
9	AC39LDRZZG0U	AIR GUIDE	1	
10	AC03LDRZZV06	GASKET A	1	
11	AC97LDMTZ000	PARTITION ASSEMBLY	1	
12	AC36KDRZZ000	SUPPORTER UNIT	1	
13	AC43KDVJZG0U	PRE-FILTER	1	
14	AC42KDSCZUU0	FILTER CASE (DECO)	1	
15	AC73KDRZZV06	DUST BOX PACKING	1	
16	AC25KDRZZ000	DUST BOX PLATE	1	
17	AC85KDSCZG0U	DUST BOX UNIT	1	MC-UL424
17	AC85KDVJZG0U	DUST BOX UNIT	1	MC-UL426
18	AC69KCWZZV07	PROTECTOR	1	
19	AC70KDVJZP00	SPRING	1	MC-UL424
19	AC70KDDSZP00	SPRING	1	MC-UL426
20	AC68KCWZZV07	PROTECTOR CASE	1	MC-UL426

2.7. Packing Materials

2.7.1. Exploded View



2.7.2. Parts List (Packing Material)

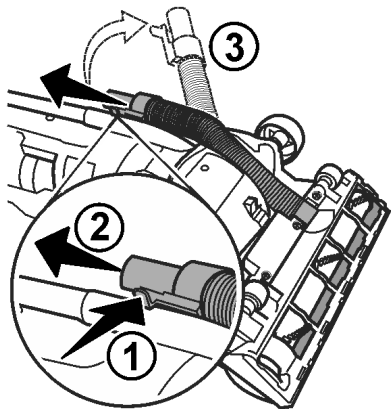
Ref. No	Part No.	Part Name & Description	Quantity	Remarks
1	AC61ZDSCZ0E0	Carton Box	1	MC-UL424
1	AC61ZDVMZ0E0	Carton Box	1	MC-UL426
2	AC01ZDVJZ0E0	Operating Instructions	1	

3 SERVICE PROCEDURES - BODY

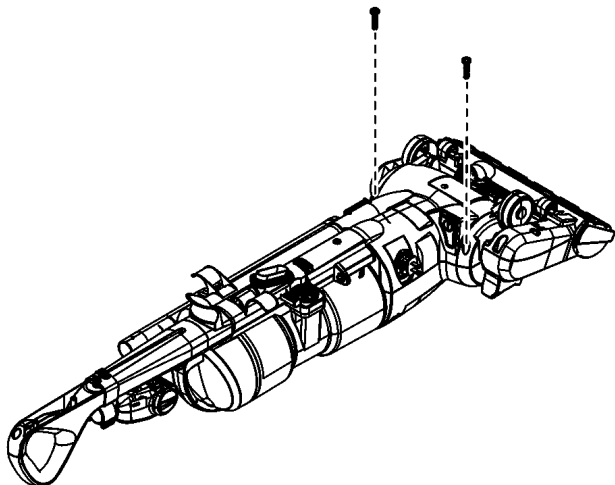
3.1. Motor

3.1.1. Removal

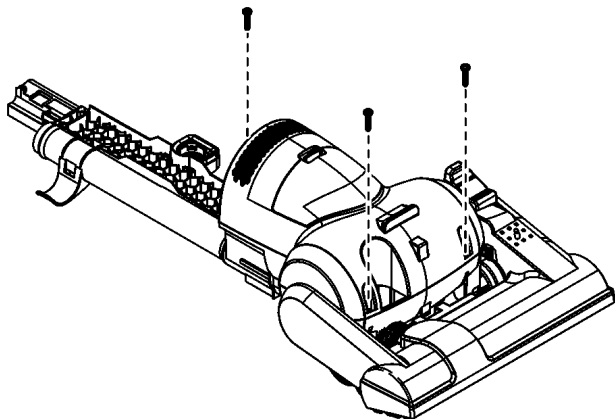
1. Remove nozzle hose from body by (1) pressing in locking tab and (2) sliding up and out of retaining slot.



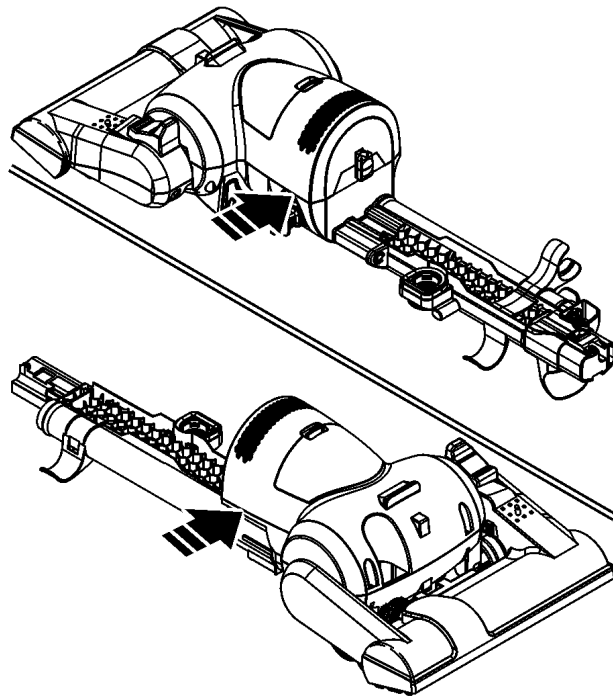
2. Remove two (2) screws from rear of vacuum cleaner.



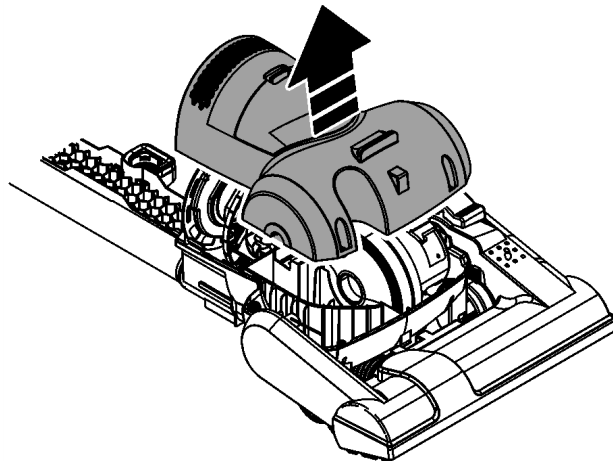
3. Remove dust bin.
4. Remove three screws from front of vacuum cleaner.



5. Press inwards on the sides in area shown to release tabs on the motor cover.

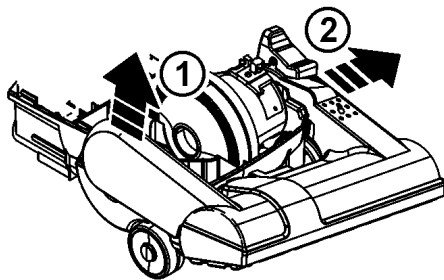


6. Lift off motor cover.

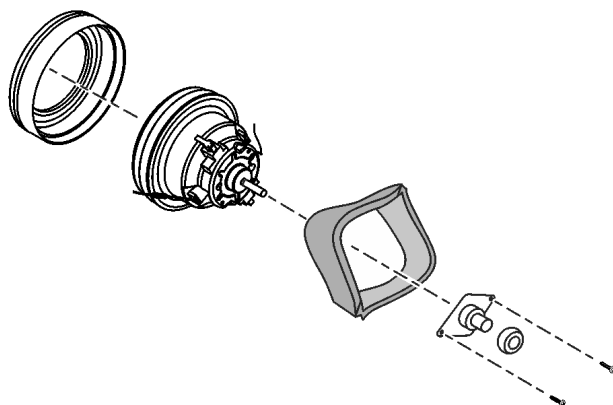


7. MC-UL424 ONLY: Remove lower plate (See Lower Plate - Removal).
8. MC-UL424 ONLY: Remove agitator (See Agitator - Removal).
9. MC-UL424 ONLY: Remove nozzle by (1) raising non-belt side and (2) sliding nozzle off the motor shaft.

It is not necessary to remove the nozzle on model MC-UL426 to access the suction motor.



10. Lift out motor assembly, plastic holder (MC-UL426), and noise suppressor.
11. Disconnect lead wires from motor.
12. Remove noise suppressor.
13. Remove motor support rubbers.
14. MC-UL424-00 only: Remove two (2) screws and motor flange. Lay aside.



15. Discard motor if defective.

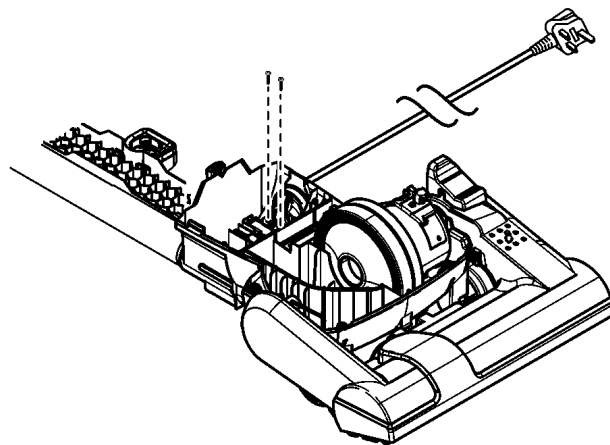
3.1.2. Installation

1. Reconnect motor lead wires (refer to wiring diagram if necessary).
2. Reinstall motor support rubbers, motor flange (MC-UL424 only) and noise suppressor.
3. Reinstall motor assembly into vacuum cleaner with thermal protector facing down.
4. Route all wiring in accordance with wire management drawing.
5. Avoid pinching of the noise suppressor by installing with overlap beneath motor and tuck excess material.
6. Reinstall nozzle.
7. Reinstall motor cover. Make sure no wires are pinched and the tabs snap into place.
8. Reinstall three (3) screws in the front of the vacuum cleaner
9. Turn vacuum cleaner over and reinstall two (2) screws into back of vacuum cleaner.
10. Reinstall agitator and lower plate (MC-UL424).
11. Reinstall nozzle hose into vacuum cleaner body.

3.2. Power Cord

3.2.1. Removal

1. Remove motor cover (See Motor - Removal).
2. Cut black and white power cord leads at cord jacket.
3. Remove two (2) screws and cord stopper.



4. Remove cord through hole in dust container and discard.

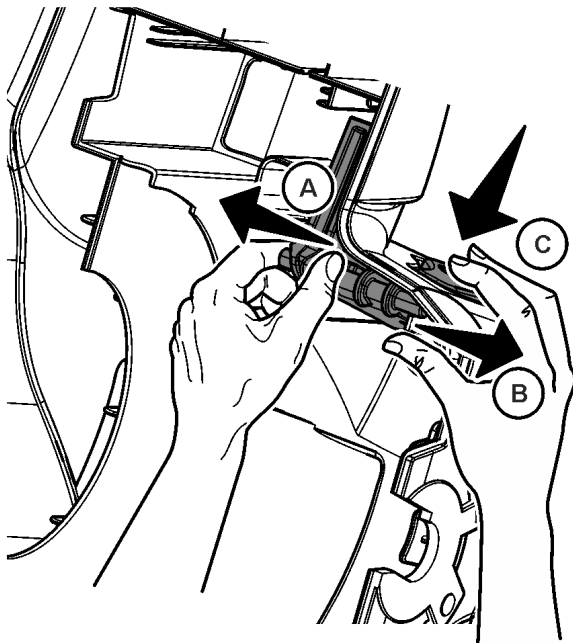
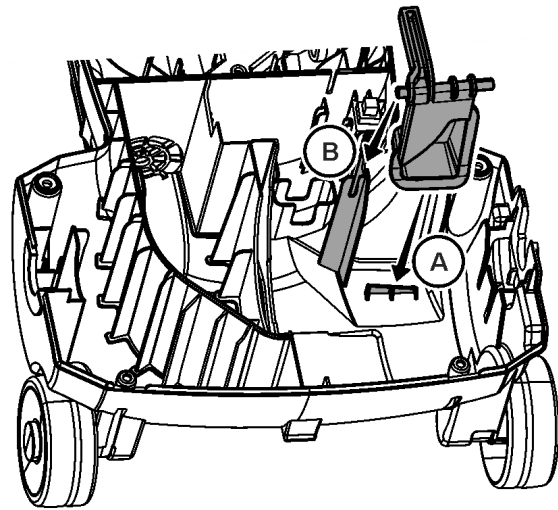
3.2.2. Installation

1. Insert power cord leads through hole in dust container.
2. Install cord stopper and two (2) screws. NOTE: DO NOT reuse cord stopper.
3. Strip leads on new power cord and wires cut during removal. Reconnect leads (refer to wiring diagram if necessary).
4. Tuck wires to avoid pinching.
5. Reinstall motor cover (See Motor - Installation). Make sure no wires are pinched.

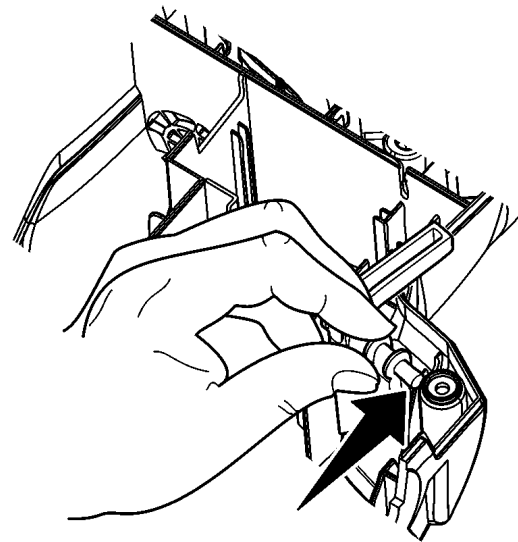
3.3. On/Off Switch

3.3.1. Removal

1. Remove lower plate (See Lower Plate - Removal).
2. Remove agitator and belt (See Agitator - Removal).
3. Remove motor cover (See Motor - Removal).
4. Remove nozzle (See Motor - Removal).
5. Remove motor assembly (See Motor - Removal).
6. Lift power distribution board out of dust container.
7. To remove button use the following steps simultaneously:
 - (A) Slide button inward
 - (B) Press rib outward
 - (C) Slightly depress on/off button



5. Press button into place.



8. Remove spring.
9. Lift switch out of dust container.
10. Disconnect leads.

3.3.2. Installation

1. Connect leads to switch.
2. Place switch in slot with terminals towards the inside of dust container.
3. Reinstall spring.
4. Reinstall button by:
 - (A) Placing bottom of button behind retaining ribs.
 - (B) Locate hinge tab in slot.

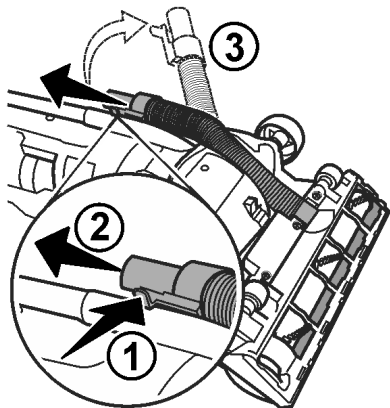
6. Reinstall power distribution board in slots.
7. Reinstall motor (See Motor - Installation).
8. Reinstall nozzle (See Motor - Installation).
9. Reinstall agitator and belt (See Agitator - Installation).
10. Reinstall lower plate (See Lower Plate - Installation).

4 SERVICE PROCEDURES - NOZZLE (MC-UL424)

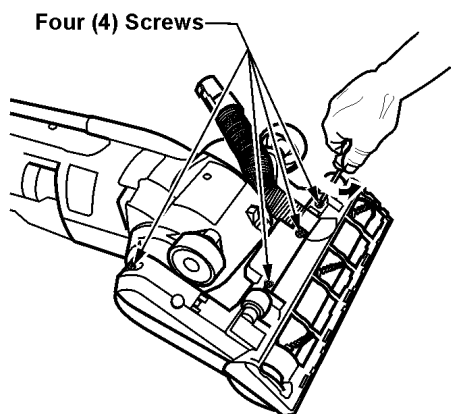
4.1. Lower Plate

4.1.1. Removal

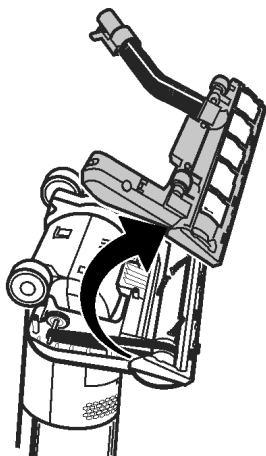
1. Turn off and unplug vacuum cleaner.
2. Lay vacuum cleaner with bottom facing upwards and nozzle flat
3. Remove nozzle hose from body by (1) pressing in locking tab and (2) sliding up and out of retaining slot.



4. Remove four (4) screws from the nozzle cover.

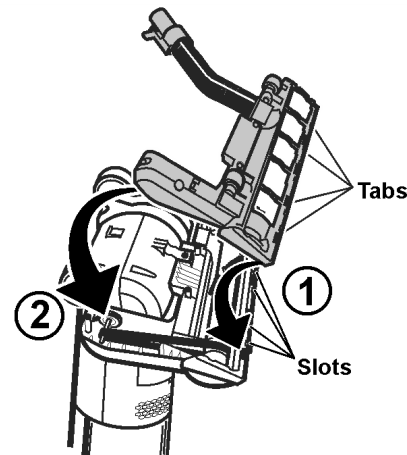


5. Place the vacuum cleaner in the upright position standing on the handle. This will minimize wheel interference when removing the lower plate.
6. Remove the lower plate by rotating upward as shown. Use caution as motor shaft may be hot.

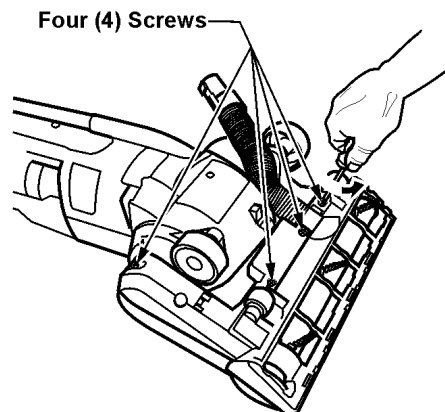


4.1.2. Installation

1. Place the vacuum cleaner in the upright position standing on the handle. This will minimize wheel interference when removing the lower plate.
2. Reinstall lower plate by (1) aligning tabs with the slots in the nozzle and (2) rotating the lower plate to installed position.



3. Lay vacuum cleaner with bottom facing upwards and nozzle flat.
4. Reinstall four (4) screws into lower plate.



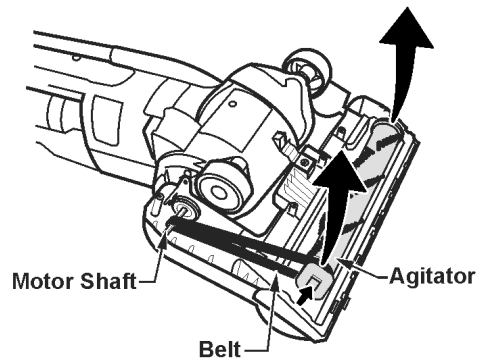
5. Route the nozzle hose bracket with the retaining bracket on body and slide down until it clicks in place.
6. Return the vacuum cleaner to the upright position before plugging into an electrical outlet.

4.2. Agitator

should be reassembled and checked for dielectric breakdown or current leakage.

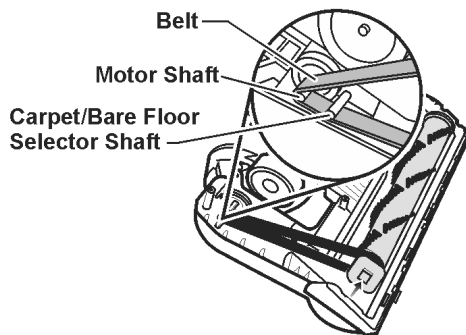
4.2.1. Removal

1. Remove lower plate (See Lower Plate - Removal).
2. Lay vacuum cleaner with bottom facing upwards and nozzle flat
3. Remove agitator carefully lifting out.

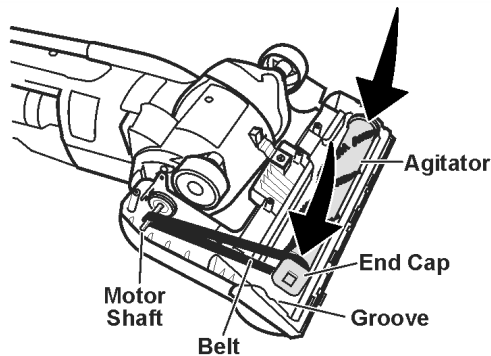


4.2.2. Installation

1. Loop new belt around motor shaft and agitator belt groove.
2. Belt must be looped around motor shaft, not carpet/bare floor selector shaft. See illustration for correct belt routing.
NOTE: Shifter must be in carpet position when installing the belt.



3. Reinstall agitator in to by placing end caps in grooves.



4. After reinstalling, turn agitator by hand to make sure belt is not twisted or pinch and that all rotating parts turn freely.
5. Replace lower plate (See Lower Plate - Installation).

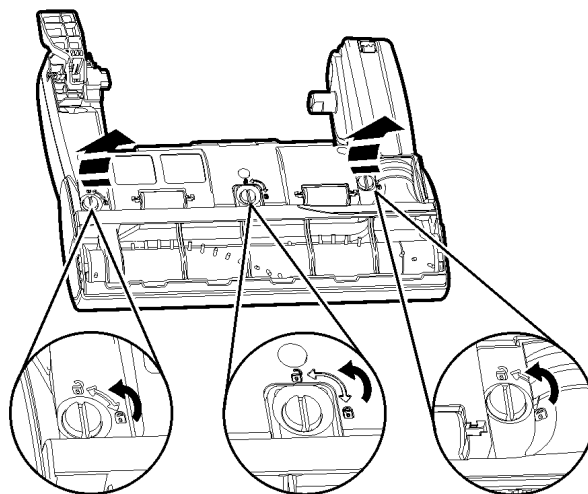
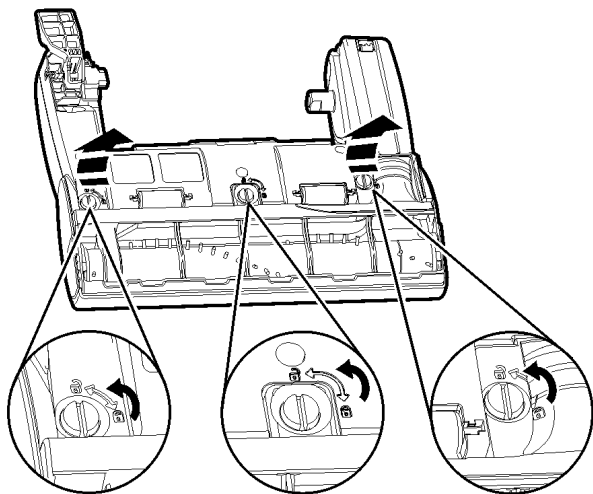
NOTE: For general servicing, it is necessary to eliminate pinching of any wire during reassembly. After servicing any electrical component or electrical enclosure, the unit

5 SERVICE PROCEDURES - NOZZLE (MC-UL426)

5.1. Nozzle cover

5.1.1. Removal

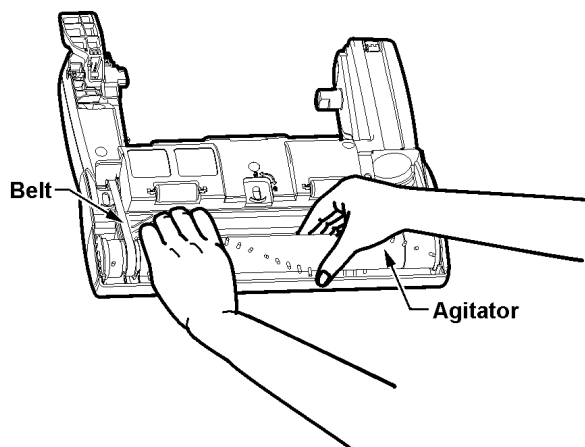
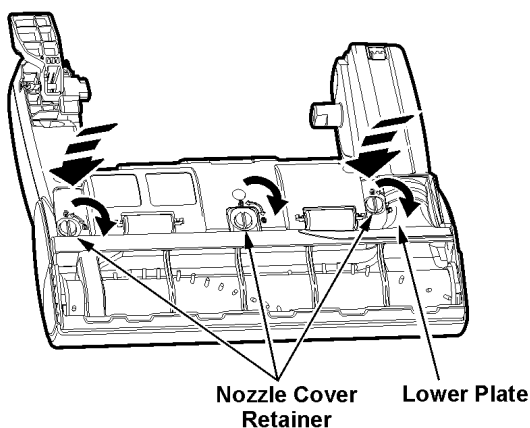
1. Release the nozzle cover by rotating the nozzle cover retainers to the UNLOCK position.
2. Rotate upward on the nozzle cover to remove it from the nozzle base.



2. Disconnect power cord from electrical outlet. Press handle release pedal and tilt the handle down so cleaner is lying flat on the floor.
3. Position hands on agitator. If the belt is still attached to the agitator, there will be tension on it.
4. Carefully lift the right end of the agitator and then lift the left end.

5.1.2. Installation

1. To replace the nozzle cover, make sure the nozzle cover retainers are in the UNLOCK position.
2. Hook the front of the nozzle cover onto the nozzle base and rotate downward.
3. Once in place, rotate the nozzle cover retainers to the LOCK position.



5. Remove the belt from the motor drive shaft.

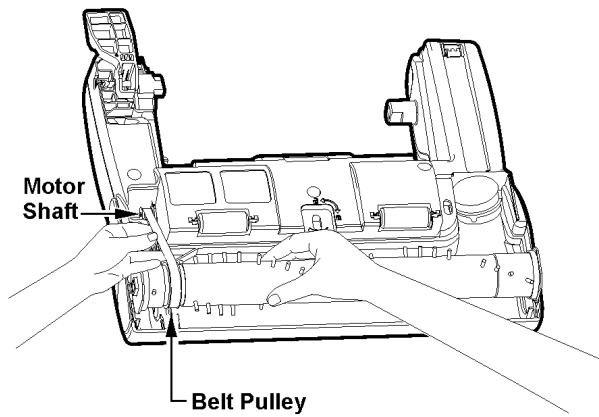
5.2.2. Installation

1. Reinstall new belt if necessary.
2. To replace the agitator, place the belt around the motor shaft.

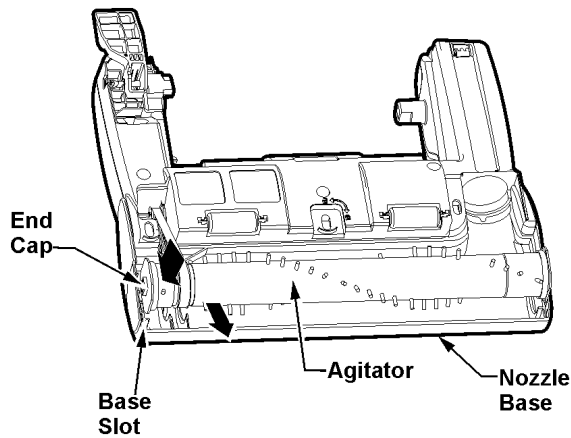
5.2. Agitator / Belt Replacement

5.2.1. Removal

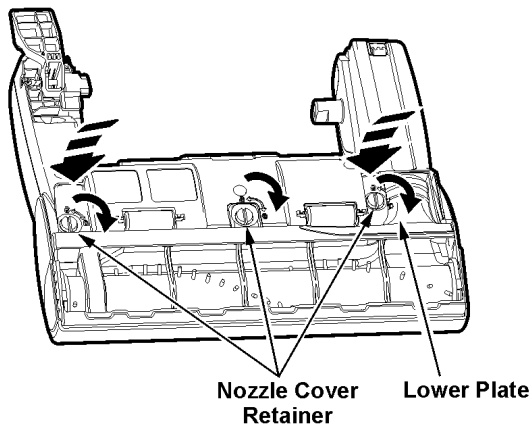
1. Remove the nozzle cover (see NOZZLE COVER REMOVAL).



3. Loop the other end of the belt over the belt pulley on the agitator.



4. Install agitator by placing the rounded portion of the end caps down into the slots in the nozzle base.
5. Press firmly, checking to see that each end is completely inserted.
6. Check to see that the belt is centered on the belt pulley and that the agitator turns freely.
7. Replace nozzle cover (See NOZZLE COVER INSTALLATION).



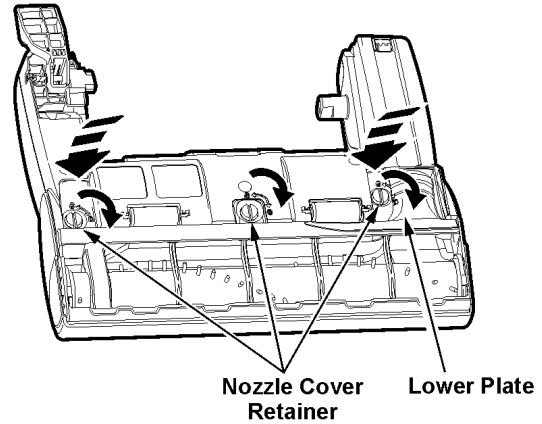
5.3. Belt

5.3.1. Removal

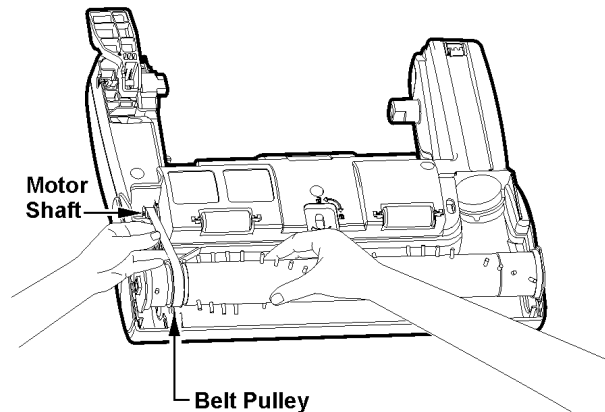
1. Remove the nozzle cover (see NOZZLE COVER REMOVAL).
2. Remove agitator (see AGITATOR REMOVAL).
3. Remove the broken or worn belt and replace with new belt.

5.3.2. Installation

1. Place new belt around the motor shaft.



2. Loop other end of belt around agitator.

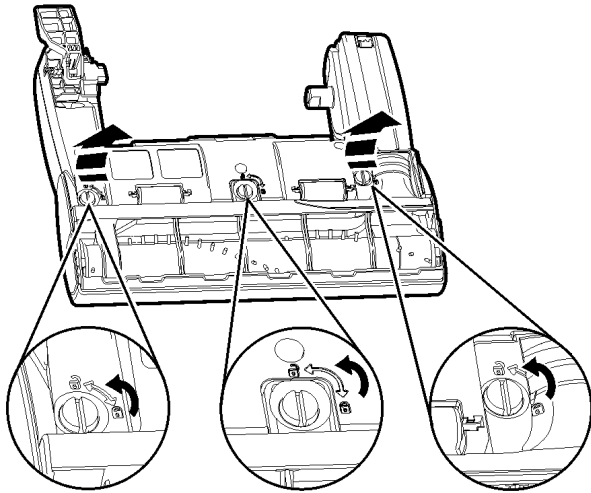


3. Replace agitator assembly (see AGITATOR REPLACEMENT).
4. Replace nozzle cover (see NOZZLE COVER REPLACEMENT).

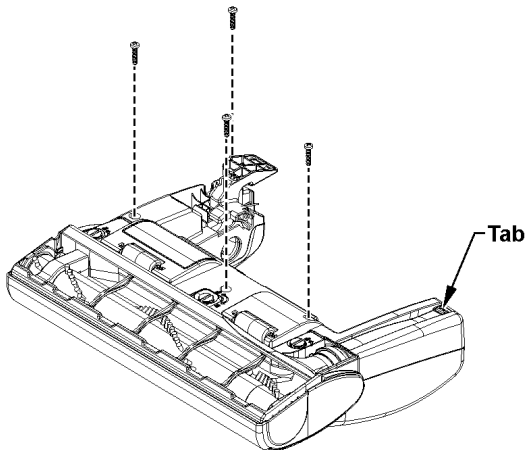
5.4. Nozzle Motor

5.4.1. Removal

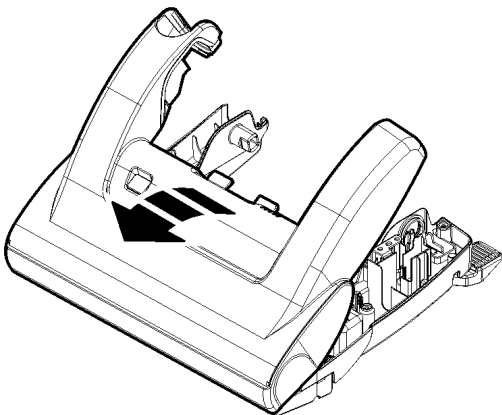
1. Remove the nozzle cover (see NOZZLE COVER REMOVAL).



2. Remove agitator (see AGITATOR REMOVAL).
3. Remove four (4) screws from the lower body. Use a screwdriver to release the tab.

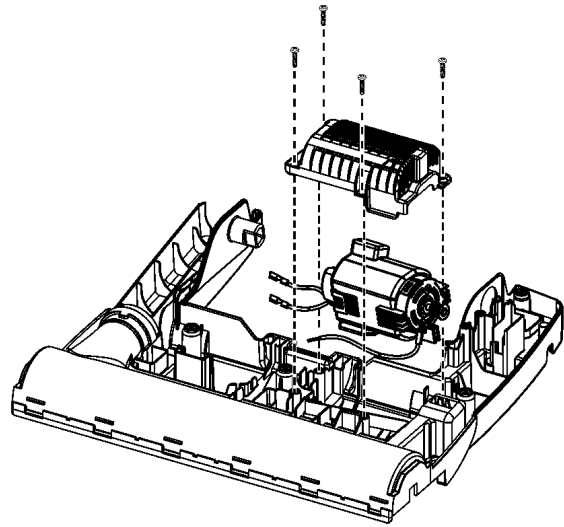


4. Turn vacuum cleaner over and separate nozzle housing from lower body.



5. Remove four (4) screws from motor cap and lift off.

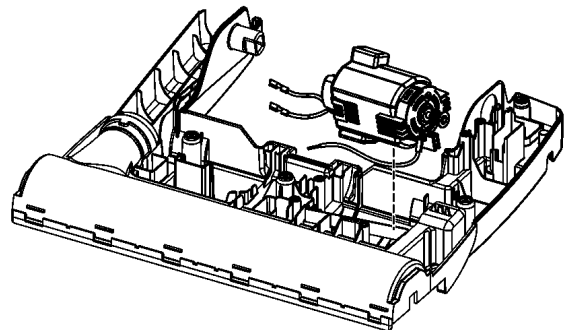
6. Remove nozzle motor from lower body.



7. Remove PCB unit and disconnect black lead wire and red lead wire.
8. Discard motor.

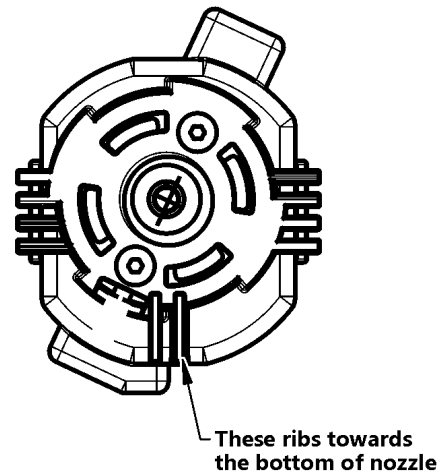
5.4.2. Installation

1. Connect black lead wire and red lead wire from motor to PCB.
2. Install motor into lower body. Insert the motor shaft end first.



NOTE: Insure that motor adjustment spring is installed before continuing.

3. Motor ribs should be oriented towards the bottom of the nozzle.



4. Reinstall motor cap and secure with four (4) screws.
5. Reinstall PCB.
6. Route wires according to WIRE MANAGEMENT drawing.
7. Reinstall nozzle housing. Care should be taken not to pinch any wires.
8. Turn vacuum cleaner over.
9. Secure nozzle housing to lower body by replacing four (4) screws.
10. Reinstall agitator assembly and belt (see AGITATOR REPLACEMENT).
11. Reinstall nozzle cover (see NOZZLE COVER REPLACEMENT).

5.5. Overload Protector

5.5.1. Removal

1. Remove the nozzle cover (see NOZZLE COVER REMOVAL).
2. Remove agitator (see AGITATOR REMOVAL).
3. Remove four (4) screws from the lower body.
4. Turn vacuum cleaner over and separate nozzle housing from lower body.
5. Remove overload protector and disconnect lead wires.
6. Discard overload protector.

5.5.2. Installation

1. Connect lead wires to new motor protector.
2. Reinstall overload protector.
3. Route wires according to WIRE MANAGEMENT drawing.
4. Reinstall nozzle housing. Care should be taken not to pinch any wires.
5. Turn vacuum cleaner over.
6. Secure nozzle housing to lower body by replacing four (4) screws.
7. Reinstall agitator assembly and belt (see AGITATOR REPLACEMENT).
8. Reinstall nozzle cover (see NOZZLE COVER REPLACEMENT).

NOTE: For general servicing, it is necessary to eliminate pinching of any wire during reassembly. After servicing any electrical component or electrical enclosure, the vacuum cleaner should be reassembled and checked for dielectric breakdown or current leakage.

5.6. PCB

5.6.1. Removal

1. Remove the nozzle cover (see NOZZLE COVER REMOVAL).
2. Remove agitator (see AGITATOR REMOVAL).
3. Remove four (4) screws from the lower body.
4. Turn vacuum cleaner over and separate nozzle housing from lower body.
5. Remove PCB and disconnect lead wires.
6. Discard PCB.

5.6.2. Installation

1. Connect lead wires to new PCB.
2. Reinstall PCB.
3. Route wires according to WIRE MANAGEMENT drawing.
4. Reinstall nozzle housing. Care should be taken not to pinch any wires.
5. Turn vacuum cleaner over.
6. Secure nozzle housing to lower body by replacing four (4) screws.
7. Reinstall agitator assembly and belt (see AGITATOR REPLACEMENT).
8. Reinstall nozzle cover (see NOZZLE COVER REPLACEMENT).

NOTE: For general servicing, it is necessary to eliminate pinching of any wire during reassembly. After servicing any electrical component or electrical enclosure, the vacuum cleaner should be reassembled and checked for dielectric breakdown or current leakage.