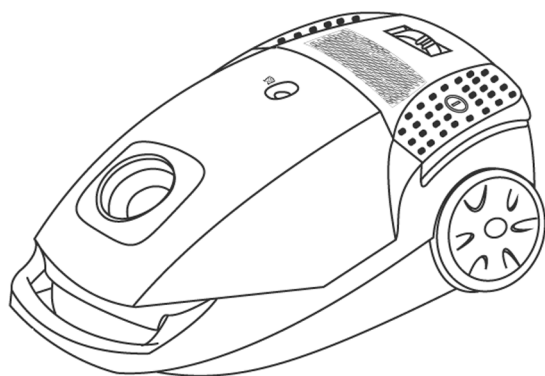


Service Manual

Vacuum Cleaner



Model No. **MC-CG525R747-KW**

MC-CG525R747-NG

MC-CG525R147-AE

MC-CG525R149-AE

MC-CG525R149-JO

MC-CG525R149-LB

MC-CG525R149-QA

MC-CG525R149-LY

MC-CG525R149-EG

MC-CG525R149-PK

MC-CG525R149-OM

MC-CG525R747-SA

Destination : SD2, KUWAIT, NIGERIA, UAE, GENERAL,
JORDAN, MIDDLE EAST, PGF, EGYPT,
LIBYA, QATAR, LEBANON, OMAN AND
AFRICA GENERAL

WARNING

This service information is designed for experienced repair technicians only and is not designed for use by the general public. It does not contain warnings or cautions to advise non-technical individuals of potential dangers in attempting to service a product. Products powered by electricity should be serviced or repaired only by experienced professional technicians. Any attempt to service or repair the product or products dealt with in this service information by anyone else could result in serious injury or death.

IMPORTANT SAFETY NOTICE

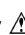
There are special components used in this equipment which are important for safety. These parts are marked by  in the Schematic Diagrams, Circuit Board Diagrams, Exploded Views and Replacement Parts List. It is essential that these critical parts should be replaced with manufacturer's specified parts to prevent shock, fire or other hazards. Do not modify the original design without permission of manufacturer.

TABLE OF CONTENTS

	PAGE		PAGE
1 Specifications	3	5.1. Disassembly of Upper and Lower Body	7
2 Schematic Diagram	3	5.2. Disassembly of Motor Case Set	8
3 Wiring Connection	4	5.3. Disassembly of Cord Reel Unit	9
4 Trouble Shooting Chart	5	5.4. Disassembly of Rail Base Unit	9
5 Disassembly and Assembly Instruction	7	5.5. Disassembly of Fan Motor Unit	10

Panasonic®

© 2012 Panasonic Manufacturing Malaysia Berhad (6100-K). Unauthorized copying and distribution is a violation of law.

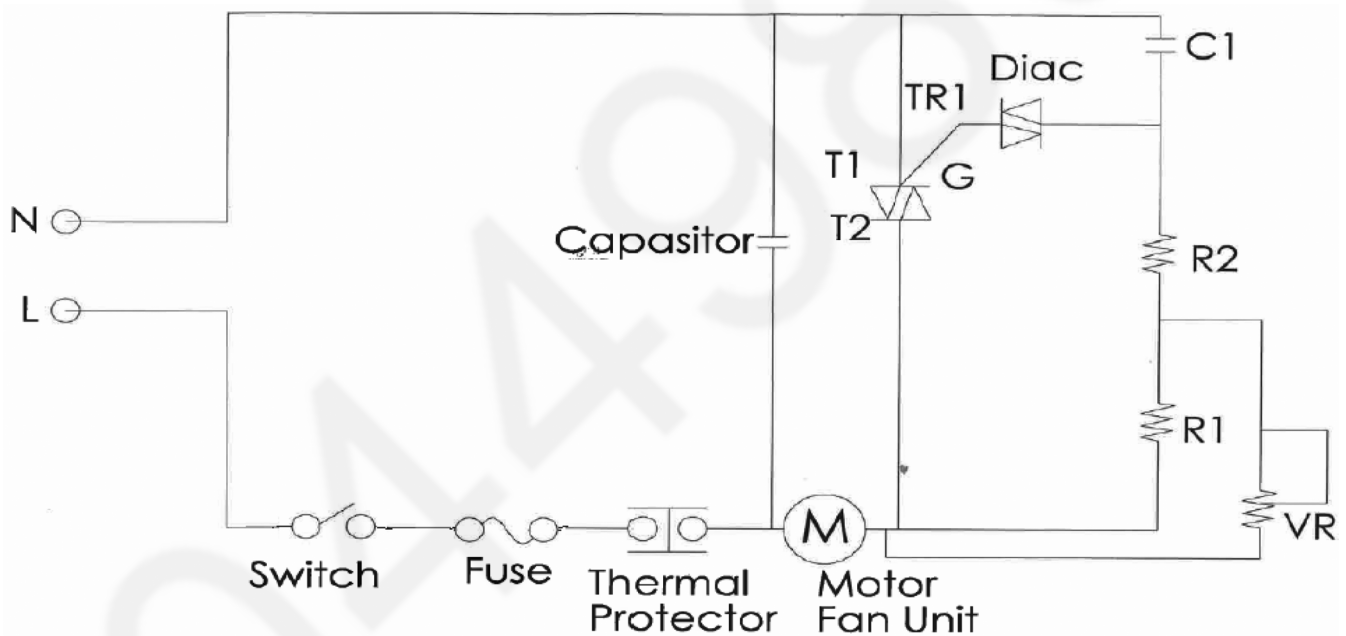
6 Exploded View and Replacement Parts List -----	11
6.1. Exploded View -----	11
6.2. Attachment Exploded View -----	12
6.3. Packing Instruction-----	13
6.4. Replacement Parts List-----	14

A04449860

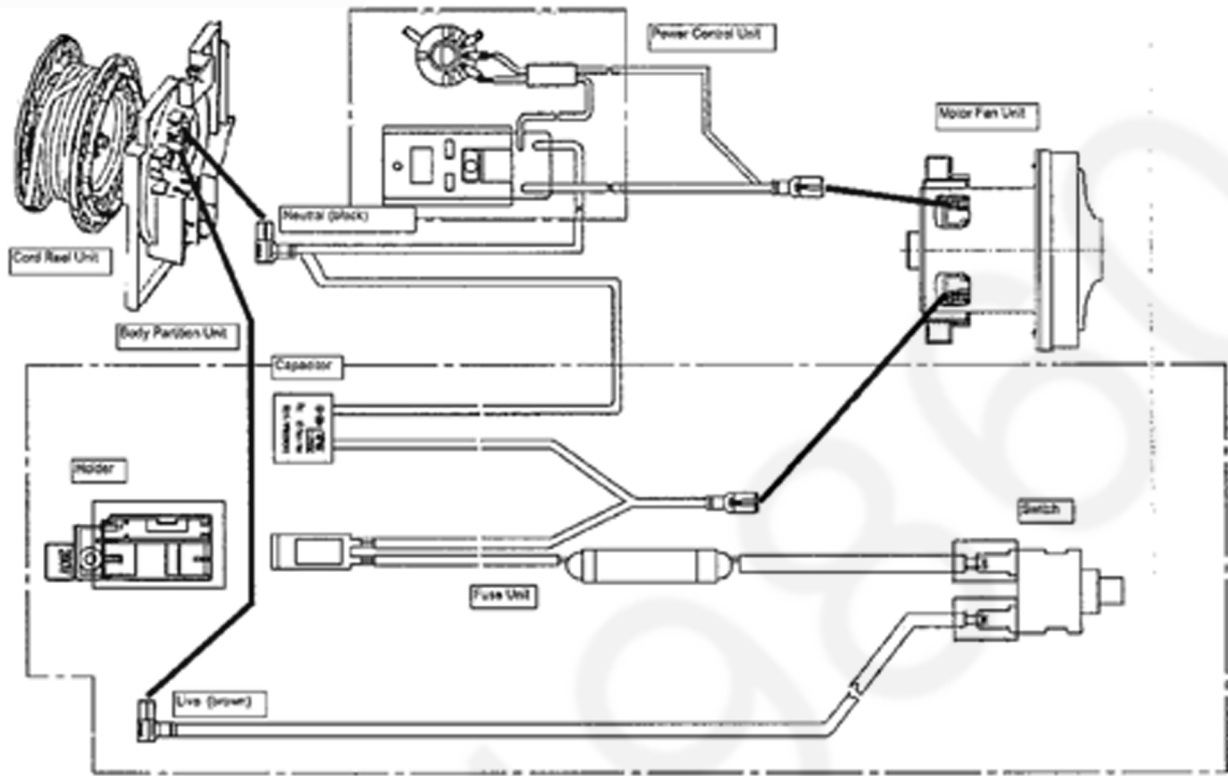
1 Specifications

Model	MC-CG525
Power Source	220V-240V-50/60Hz
Input Power (Max)	1700W
Input Power (IEC)	1400W - 1650W
Power Control	SLIDE
Dust Capacity	3.0L
Automatic Cord Rewind	0
Vac Gauge	0
Exhaust Filter	ANTI-BACTERIA
Extension Wands	METAL TELESCOPIC WAND
Blower Operation	0
Floor Nozzle	2-STEP
Dust Bag	CLOTH BAG
Dimension (H x W x L) mm	240mm X 304mm X 450mm
Net Weight	4.5 KG
Cord Length	5.0 M
Cleaning Tools	CREVICE TOOL / DUSTING BRUSH

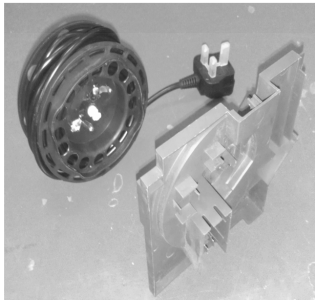
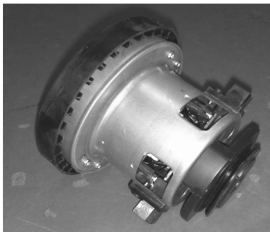
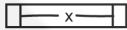

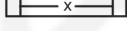
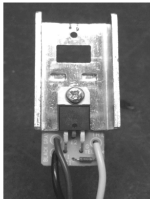
2 Schematic Diagram

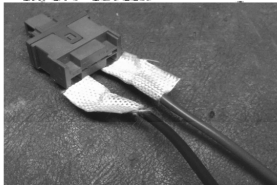
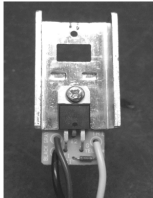
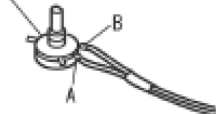
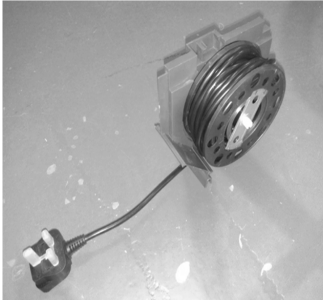



3 Wiring Connection



4 Trouble Shooting Chart

CONDITION	CHECKPOINT	FIGURE	CHECK METHOD	REMEDY
The Motor doesn't rotate.	CORD REEL UNIT RAIL BASE UNIT		<ul style="list-style-type: none"> • Check the continuity at both ends of the Plug and both ends of the Lead Wire Terminal of the Cord Reel Unit. (Disconnection check) • There must be no problems between the Cord Reel Unit and the Body Partition Unit (e.g. bumps in the contact, entry of dust). 	<ul style="list-style-type: none"> • If there is no continuity, replace the Cord Reel Unit, or the Body Partition Unit.
	MOTOR	 Motor Assy	<ul style="list-style-type: none"> • Check the continuity between the terminals of the Motor. • Confirm that the Motor can be rotated by fingers without being locked. • Visually check for bumps in the Motor (e.g. bumps in the coil). 	<ul style="list-style-type: none"> • If there is a problem, replace the Motor Assy. * Also check and replace the Fuse. (Lead Wire B Unit).
	FUSE	<ul style="list-style-type: none"> • Check if fuse is blown. • Blown due to insulation deterioration..... Defective motor insulation  • Blown due to expiry of fuse life.....Fuse life  • Instantaneous melting due to overcurrent..... Motor locked; overcurrent applied; incorrect wiring  		Replace Lead Wire B after trouble source had been removed.
	TRIAC (on the SSR Unit)		<ul style="list-style-type: none"> • Check the Triac by conducting the following inspection. <div style="background-color: black; color: white; padding: 5px; text-align: center; font-weight: bold;">Check the Triac on the SSR Unit</div> <p>*Using a tester, see if continuity is detected between each pair of Triac legs. The normality are as follows.</p> <ol style="list-style-type: none"> 1. T1 - T2 : No continuity 2. T2 - G : No continuity 3. T1 - G : Continuity <p>*Connect the T1 side to the positive side of the tester, and then check the continuity.</p>	<ul style="list-style-type: none"> • If there is a problem, replace the P.C.B. Assy.

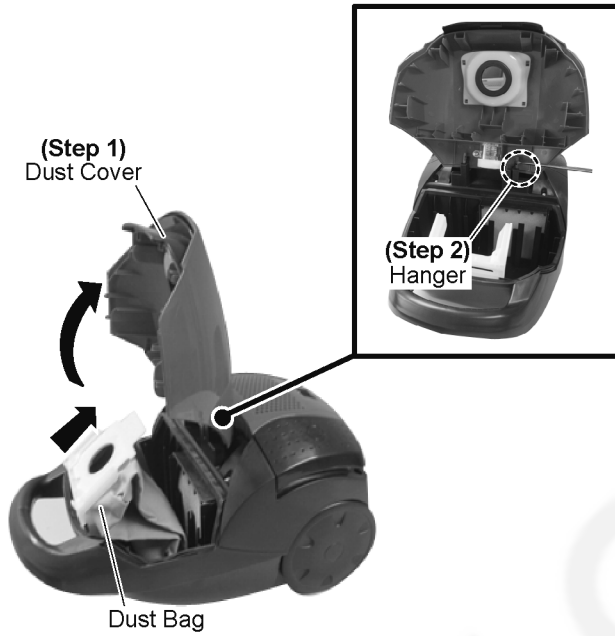
CONDITION	CHECKPOINT	FIGURE	CHECK METHOD	REMEDY
	ON/OFF SWITCH	<p>On/Off Switch</p> 	<ul style="list-style-type: none"> Check the continuity by pressing the On/Off Switch. 	<ul style="list-style-type: none"> If there is a problem, replace the Lead Wire B Unit.
1. The Motor doesn't rotate. 2. The Power Control doesn't function.	TRIAC (on the SSR Unit)		<ul style="list-style-type: none"> Check that the Triac has not been short-circuited. If there is continuity between T1 and T2, then there is a problem in the components. 	<ul style="list-style-type: none"> If there is a problem, replace the Lead Wire B Unit.
	POWER CONTROL VOLUME	<p>Power Control Volume</p> 	<ul style="list-style-type: none"> The resistance between A and B must be switchable. 0~470Ω 	<ul style="list-style-type: none"> If there is a problem, replace the Lead Wire B Unit.
The Cord cannot be pulled out.	CORD REEL UNIT		<ul style="list-style-type: none"> If the Cord cannot be pulled out, press the Brake Pedal and confirm that the Cord can be rewound. Repeat operations to rewind and pull out the Cord two or three times and confirm that it can be normally rewound. 	<ul style="list-style-type: none"> If it is impossible to resolve the problem due to an abnormal condition of the Cord, separate the Body, untwist the Cord, and rewind it. Or, replace the Cord Reel Unit and rewind the Cord.
1. The Cord cannot be rewound. 2. The pulled out Cord cannot be locked.			<ul style="list-style-type: none"> Separate the Body and; Confirm that a sufficient number of spare turns have been made. Confirm that the Cord Reel Spring is working. Confirm that the Brake Lever Unit is working correctly to stop the Cord from rewinding. 	<ul style="list-style-type: none"> Make spare turns according to the engraved number of turns, or; Replace the Cord Reel Unit. or Replace the Brake Lever Unit.
1. The suction power is low. 2. The Motor stops during vacuuming. (The Thermo Protector in the Motor Assy works.)	DUST BAG FILTER EXTENSION WAND UNIT HOSE UNIT		<p>Check for clogging with dust.</p> <ul style="list-style-type: none"> Dust Bag Filter (in the Dust Box) Hose Unit Extension Wand Unit 	<p>Remove dust.</p> <ul style="list-style-type: none"> Replace any broken Dust Bag, Filter, and/or Hose Unit.

5 Disassembly and Assembly Instruction

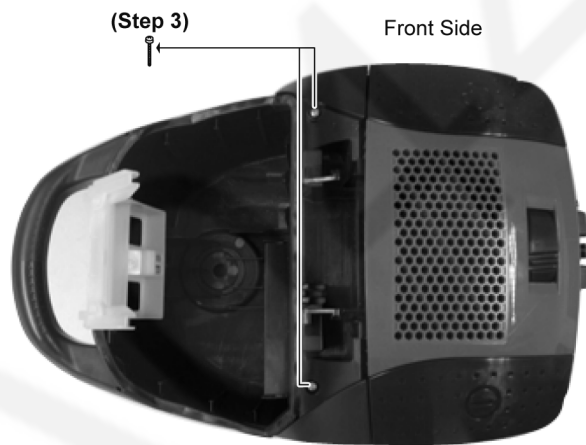
5.1. Disassembly of Upper and Lower Body

Step 1 Open Dust Cover & remove Dust Bag.

Step 2 Release Dust Cover from Hanger.

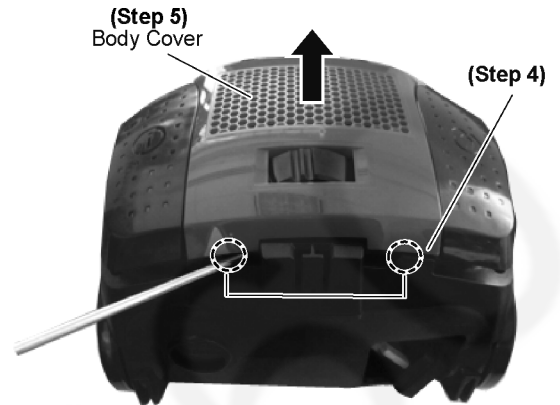


Step 3 Remove 2 screws from the Front Side.

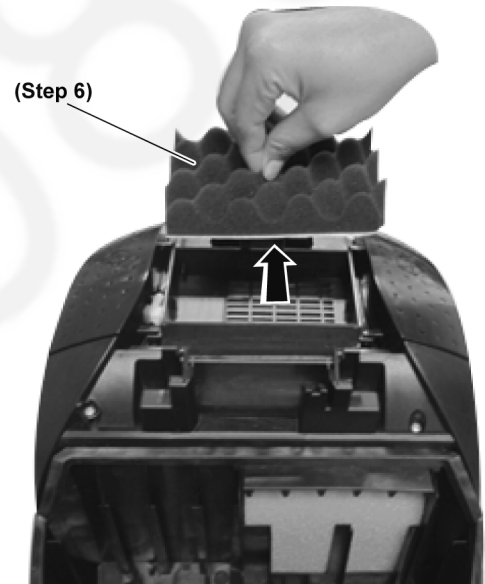


Step 4 Release 2 catches using Philip Screwdriver.

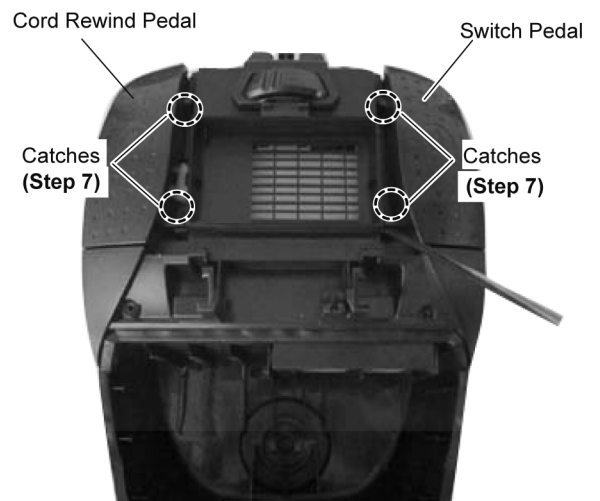
Step 5 Remove Body Cover.



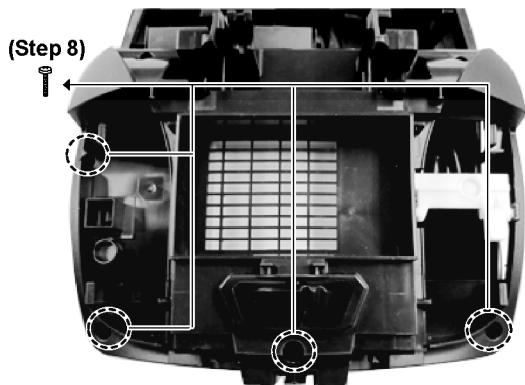
Step 6 Take out Filter (sponge)



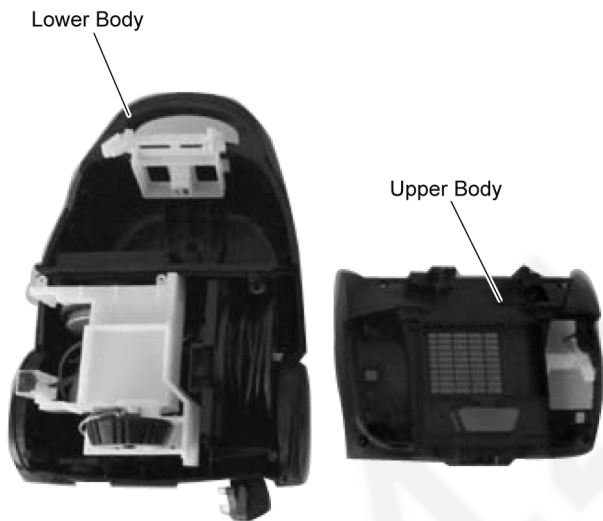
Step 7 Release 4 catches to take out the pedal.



Step 8 Remove 4 screws from Upper Body .

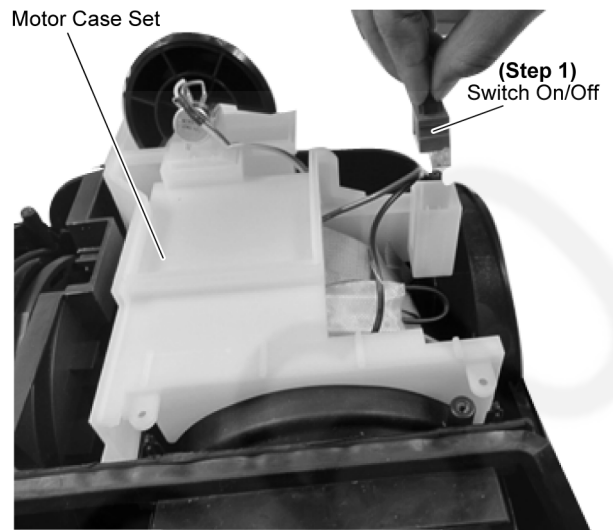


Step 9 Take out Upper Body from Lower Body.

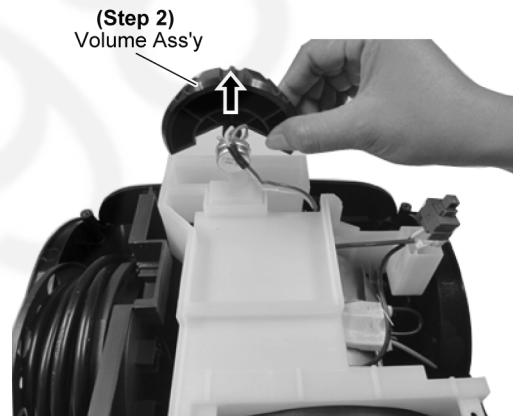


5.2. Disassembly of Motor Case Set

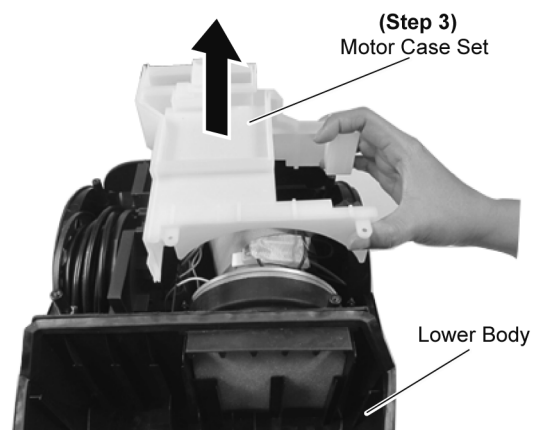
Step 1 Pull out the Switch On/Off.



Step 2 Remove Volume Ass'y from Motor Case Set.

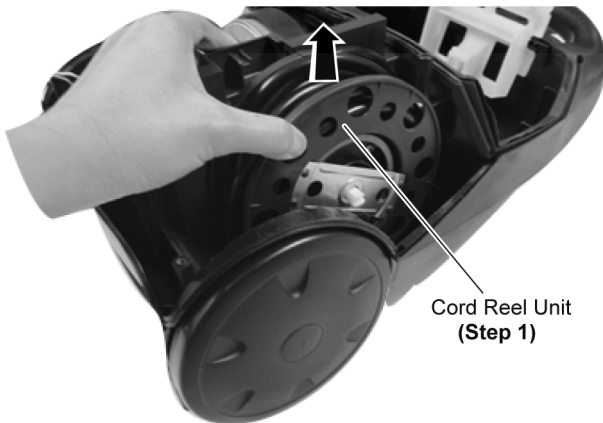


Step 3 Pull up Motor Case Set from Lower Body.

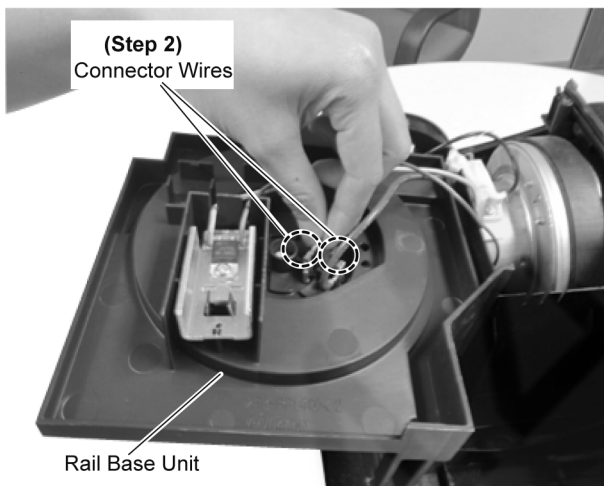


5.3. Disassembly of Cord Reel Unit

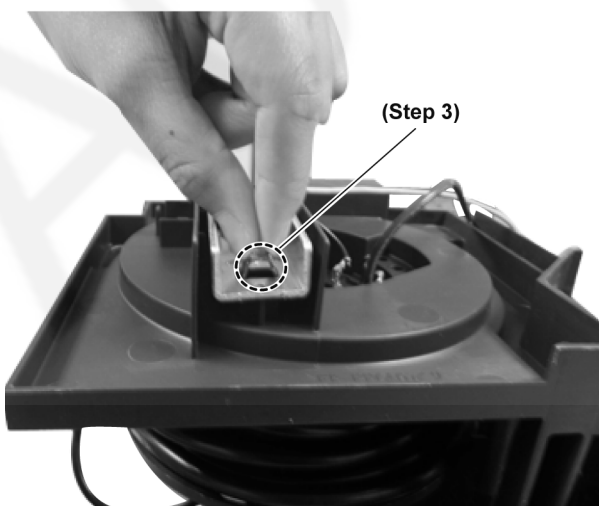
Step 1 Pull up the Cord Reel Unit.



Step 2 Remove 2 Connector Wires from Rail Base Unit.

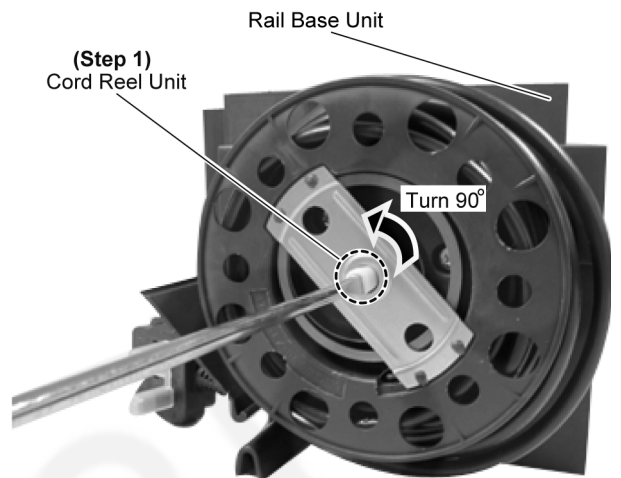


Step 3 Release Printed Circuit Board (PCB) from catches.

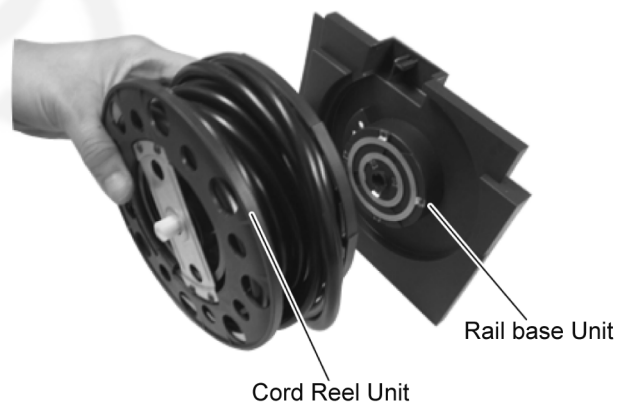


5.4. Disassembly of Rail Base Unit

Step 1 Remove the Cord Reel Unit from the Rail Base Unit by insert a slotted screwdriver into the shaft of the Cord Reel Unit and turning it 90° counter-clockwise.



Step 2 Remove Cord Reel Unit from Rail Base Unit.



To assemble:

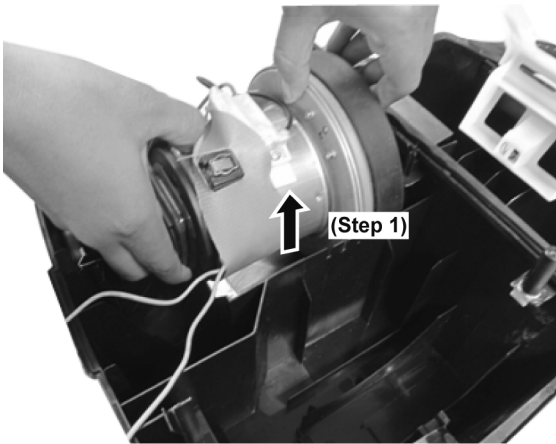
- Turn the Cord Reel Unit holding on the plug
- Number of turns for pretension of the Cord is engraved on the steel at the side of Cord Reel Unit.

Step 1 Assemble in reverse order of the disassembly.

Step 2 Pretension the Cord Reel Unit.

5.5. Disassembly of Fan Motor Unit

Step 1 Pull up Motor Set.



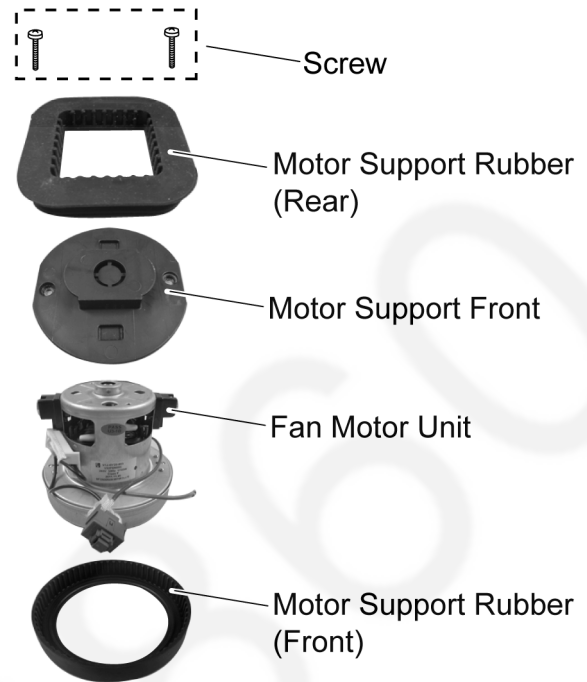
Step 2 Remove Silicon Cloth.



Step 3 Disconnect Wire Terminals.

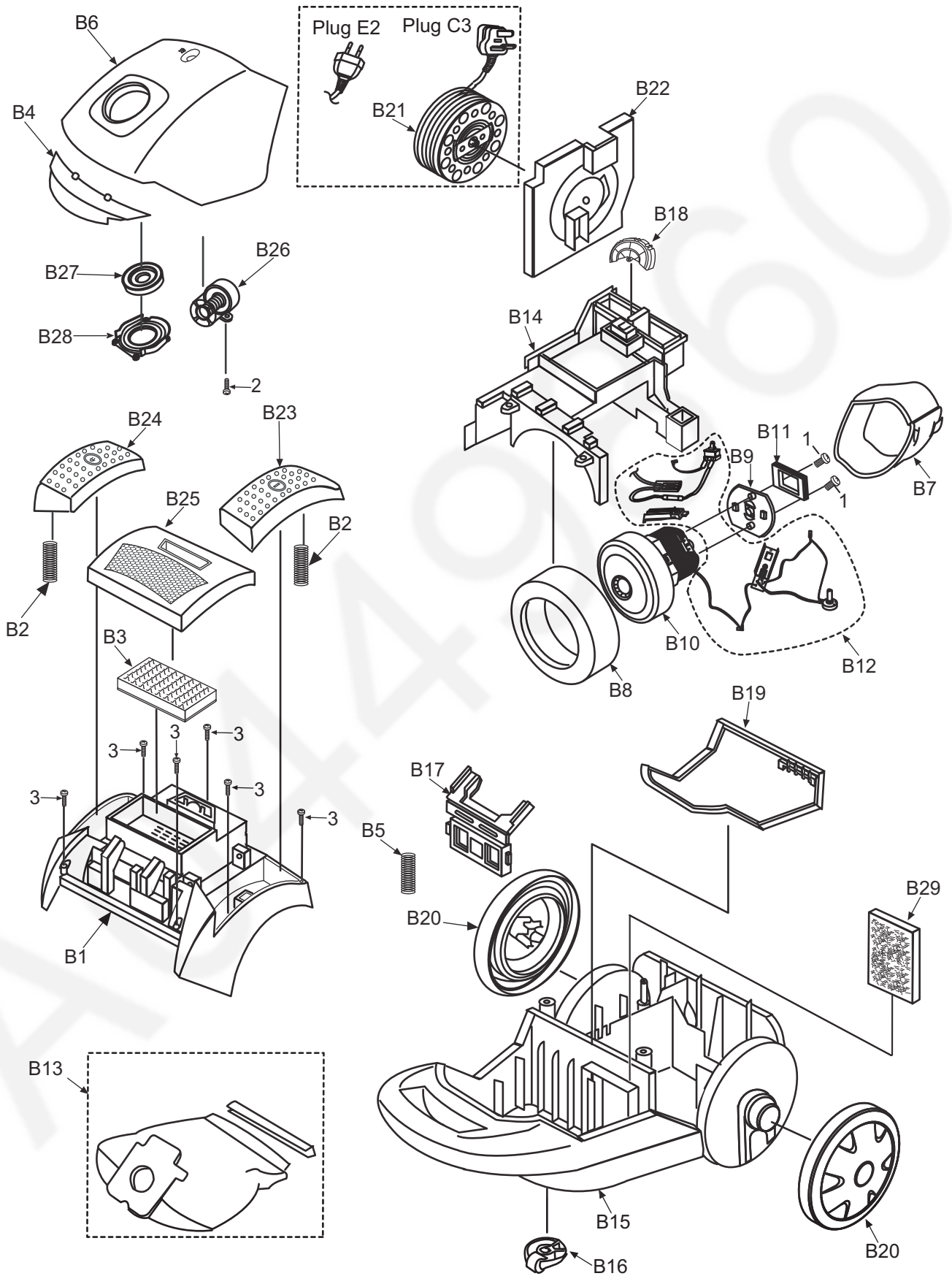


Step 4 Remove Motor Support Rubbers.

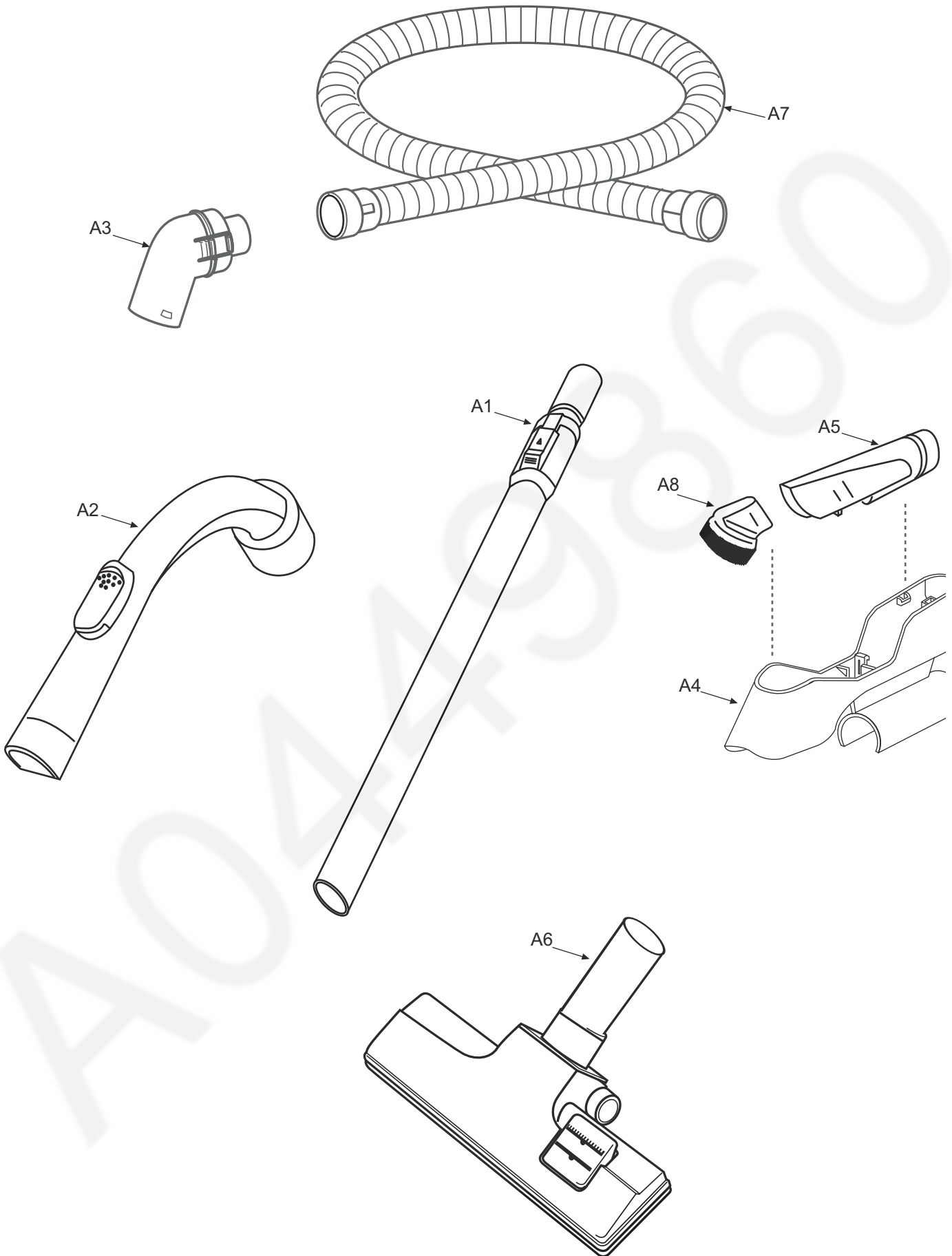


6 Exploded View and Replacement Parts List

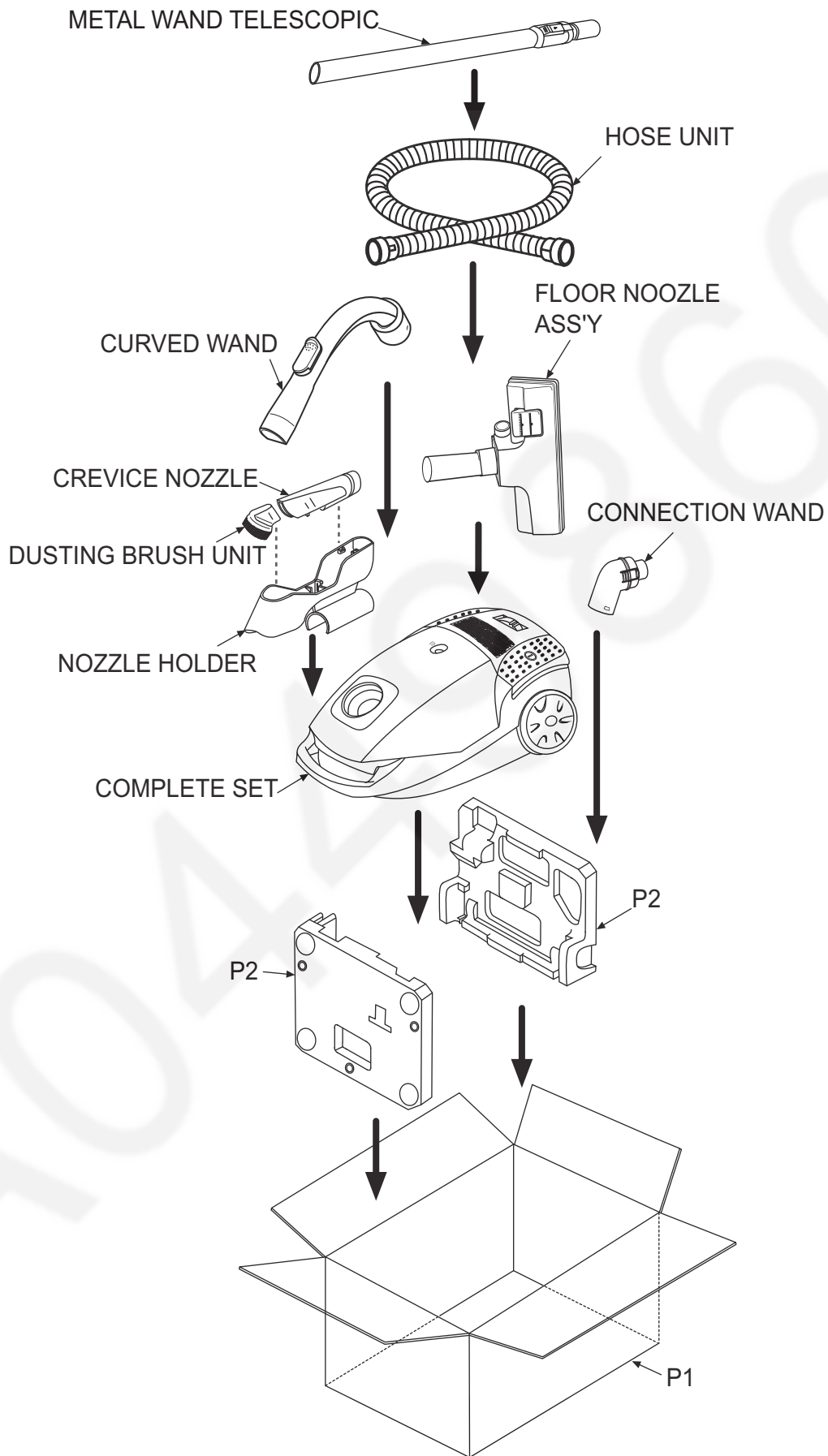
6.1. Exploded View



6.2. Attachment Exploded View



6.3. Packing Instruction



6.4. Replacement Parts List

Safety	Ref. No.	Part No.	Part Name & Description	Qty	Remarks
	1	XTN4+10FFJ	SCREW	2	
	2	XTN4+12BFJ	PAN TAP SCREW	1	
	3	XTN4+16BFJ	PAN TAP SCREW	6	
	B1	YMV02ADN000	UPPER BODY	1	
	B2	YMV08EDP000	SWITCH PEDAL SPRING	2	
	B3	YMV30KDN000-P	FILTER	1	ANTI BACTERIAL
	B4	YMV01DDN000	BUCKLE	1	
	B5	YMV46HBW000	BAG CLAMPER SPRING	1	
	B6	YMV92LDN0R0	DUST COVER UNIT	1	RED
	B7	YMV0NA81000	SILICON CLOTH	1	
	B8	YMV02FDN000	MOTOR SUPPORT RUBBER FRONT	1	
	B9	YMV07FDN000	MOTOR SUPPORT FRONT	1	
△	B10	YMV92FDN00C	MOTOR FAN UNIT	1	(CDS) 1700W 240V
	B11	YMV03FDN000	MOTOR SUPPORT RUBBER REAR	1	
	B12	YMV68VDP000	LEAD WIRE B UNIT	1	
	B13	YMV99KDN000	CLOTH BAG UNIT	1	
	B14	YMV63FDN000	MOTOR SUPPORT COVER	1	1
	B15	YMV03ADN000	LOWER BODY	1	
	B16	YMC95C7K100	CASTER UNIT	1	
	B17	YMV23KBW000	SUPPORTER	1	
	B18	YMV25QDN000	SWIVEL CAP	1	
	B19	YMV66KDN000	DUST COVER PACKING	1	
	B20	YMV01CAQ080	WHEEL	2	
△	B21	YMV99NBW000	CORD REEL UNIT	1	C3 PLUG (SD2, KUWAIT, NIGERIA AND UAE)
△	B21	YMV99NBW00Q	CORD REEL UNIT	1	E2 PLUG (GENERAL MIDDLE EAST, PGF, EGYPT, JODAN, LIBYA, QATAR, LEBANON. OMAN AND AFRICA GENERAL)
△	B22	YMV96ADN000-K	BODY PARTITION UNIT	1	SD2, KUWAIT NIGERIA AND UAE
△	B22	YMV96ADN000	BODY PARTITION UNIT	1	GENERAL MIDDLE EAST, PGF, EGYPT, JODAN, LIBYA, QATAR, LEBANON. OMAN AND AFRICA GENERAL
	B23	YMV05EDN000	SWITCH PEDAL	1	
	B24	YMV46NDN000	BRAKE PEDAL	1	
	B25	YMV92ADN0R0	BODY COVER UNIT	1	
	B26	YMV99MBW100	INDICATOR UNIT	1	
	B27	YMV64HBW000	SUCTION INLET PACKING	1	
	B28	YMV25KDN000	DUST BOX PLATE	1	
	B29	YMC37KKK000	SECONDARY FILTER	1	
	A1	YMV99P62100	METAL WAND TELESCOPIC	1	
	A2	YMV98PDN000	CURVE WAND UNIT	1	
	A3	YMV27HBW000	CONNECTION WAND	1	
	A4	YMV76PDN000	NOZZLE HOLDER	1	
	A5	YMV60R9L080	CREVICE NOZZLE	1	
	A6	YMC99RXQ100	FLOOR NOZZLE ASSY	1	
	A7	YMC84PXP00-P	HOSE UNIT	1	
	A8	YMC88RYX080	DUSTING BRUSH UNIT	1	
	P1	YMV61ZDN000	CARTON BOX	1	
	P2	YMV98ZDN000	CUSHION UNIT	1	
△		YMV01ZDN000	INSTRUCTION BOOK	1	

MMH1204