

Service Manual

[TOP NEXT](#)

ORDER NO.ECD0403003C3

Service Manual

Vacuum Cleaner

- MC-9080



SPECIFICATIONS

Model	MC-9080
Power Source	AC220V~240V 50/60Hz
Motor Power	1700W
Dust Capacity	20.0L
Dimensions (H x W x L)	584mm x 340mm x 366mm
Weight (With Attachments)	7.3kg
Cord Length	8.0m
Attachments	Hose, Extension Wand, Floor Nozzle Extension Wand Holder Crevice Tool, Upholstery Brush

Specifications are subject to change without notice for further improvement.


© 2004 Matsushita Electric Industrial Co., Ltd. All rights reserved. Unauthorized copying and distribution is a violation of law.

WARNING

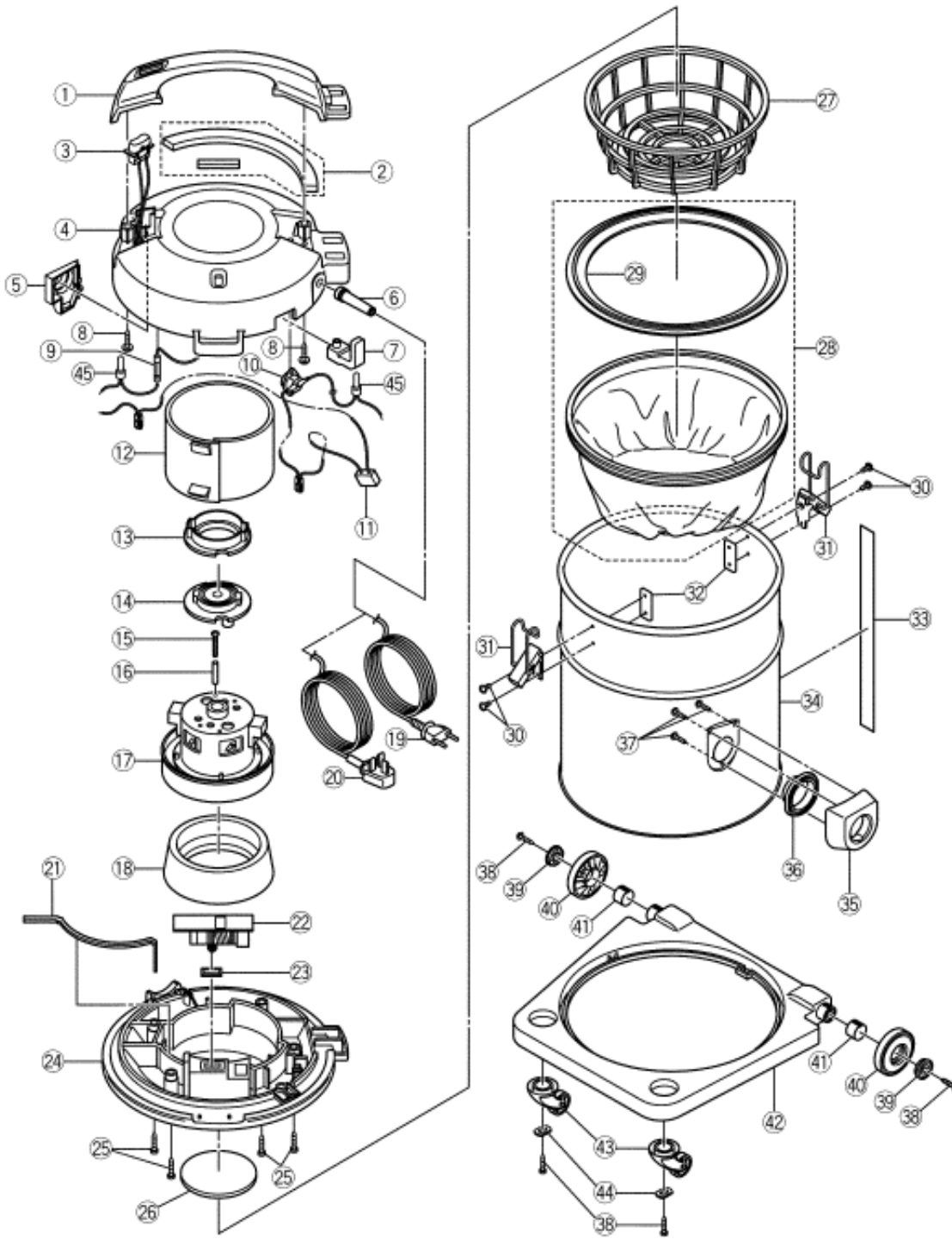
This service information is designed for experienced repair technicians only and is not designed for use by the general public. It does not contain warnings or cautions to advise non-technical individuals of potential dangers in attempting to service a product. Products powered by electricity should be serviced or repaired only by experienced professional technicians. Any attempt to service or repair the product or products dealt with in this service information by anyone else could result in serious injury or death.

Panasonic®

IMPORTANT SAFETY NOTICE

There are special components used in this equipment which are important for safety. These parts are marked by  in the Schematic Diagrams, Circuit Board Diagrams, Exploded Views and Replacement Parts List. It is essential that these critical parts should be replaced with manufacturer's specified parts to prevent shock, fire or other hazards. Do not modify the original design without permission of manufacturer.

[TOP NEXT](#)



5 PARTS LIST (BODY UNIT)

[TOP](#) [PREVIOUS](#) [NEXT](#)

Ref. No.	Part No.	Part Name & Description	Remarks
1	AMC01B-DE0V	Handle	
2	AMC85L-VJ0	Exhaust Packing	
3	AMC98E-VJ0V	Main Swith Unit	With Fuse 15A
4	AMC24A-NS0V	Body Cover	
5	AMC96L-DD0V	Blower Outlet Unit	With Cover Spring
6	AMC51E-BYO	Cord Bushing	
7	AMC53E-DD0V	Cord Storage Hook	
8	XTT4+20BFY	Truss Screw	
9	AMC97W-VH00B	Fuse Ass'y (15A)	15A
10	AMC98W-QN0	Thermal Protector	
11	AMC94F-VJ0	Capacitor Unit	With thermo Protector
12	AMC99G-QN0	Noise Suppressor Unit	
13	AMC07F-DD0	Motor Supporter	
14	AMC03F-QN0	Rear Motor Suppoter	
15	XTN4+35FFX	Screw	
16	AMC74S-QN0	Stopper	
17	AMC92F-RE00C	Motor Unit	AC220V-240V
18	AMC02F-VJ0	Front Moter Suppoter	
19	AMC96E-VH0	Power Cord W/plog(C-2)	Iran Egypt
20	AMC93E-VH00A	Power Cord W/plog(C-3)	Saudi Arabia
21	AMC81A-QN0	Tight Packing	
22	AMC98M-VH0	Indicator Unit	
23	AMC09M-QN0	Indicator Packing	
24	AMC98A-QN0V	Upper Body Unit	
25	XTN4+25BFY	Screw	
26	AMC30K-QN0	Filter	
27	AMC18K-DD0	Expander	
28	AMC99K-DD0	Cloth Bag Unit	
29	AMC10K-C90	Bag Supportor	
30	XYN4+C8FY	Screw	
31	AMC99D-JJ0	Buckle Unit	
32	AMC32D-B300C	Buckle Plate	
33	AMC05T-VT0	Sticker	
34	AMC97A-VJ0V	Lover Body	With Chain
35	AMC01H-DD0H	Front Cover	
36	AMC50K-J300C	Valve Grommet	
37	XTT35+16BFY	Truss Tapping Screw	
38	XTN4+16BFY	Tapping Screw	
39	AMC05C-L90H	Wheel Cap	
40	AMC01C-9403	Wheel	
41	AMC02C-9700C	Wheel Supporter	

42	AMC43A-QN0V	Frame	
43	AMC95C-0E0H	Caster Unit	
44	AMC26C-B00	Washer	
45	CE-230	Washer	Close and Connector

[TOP](#) [PREVIOUS](#) [NEXT](#)