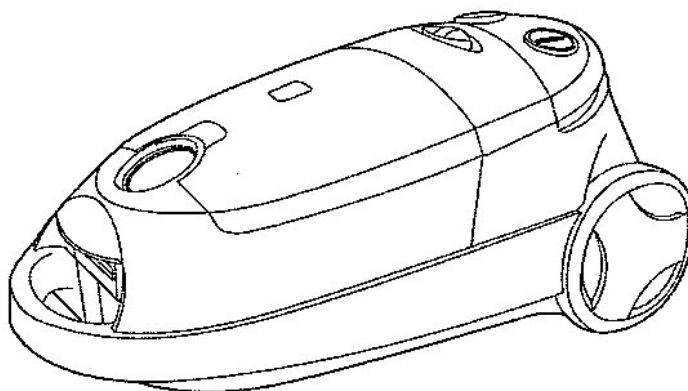


Service Manual

Vacuum Cleaner
MC-5530/MC-5520/MC-5510



MODEL	MC-5510	MC-5520	MC-5530
POWER SOURCE	AC220~240V		
(FREQUENCY)	50/60Hz		
POWER CONSUMPTION	1600W	1800W	2000W
CLOSED SUCTION	>1800mmH ₂ O		
INITIAL AIR FLOW	>1.8m ³ /min		
AIR POWER	DUST BAG		
	300W	320W	400W
DUST CAPACITY	6 liters		
BODY DIMENSION (mm) W x L x H	308mm x 587mm x 247mm		
WEIGHT (include ATM)	7.2kg		7.5kg
CORD LENGTH	5.0m, > 5.4m (Australia, New Zealand)		
ATTACHMENTS	Hose, Extension Wands, Floor Nozzle, Crevice Tool, Dusting Brush, Upholstery Brush, Curve Wand, Hose Connection Wand		

* Specifications are subject to change without notice for future improvement.

⚠ WARNING

This service information is designed for experienced repair technicians only and is not designed for use by the general public. It does not contain warnings or cautions to advise non-technical individuals of potential dangers in attempting to service a product. Products powered by electricity should be serviced or repaired only by experienced professional technicians. Any attempt to service or repair the product or products dealt with in this service information by anyone else could result in serious injury or death.

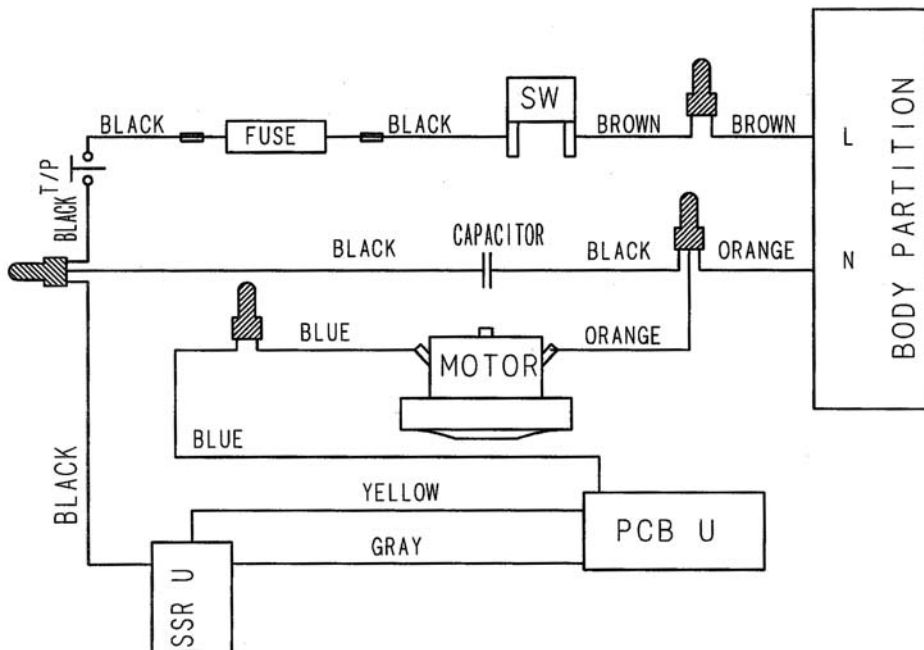
Panasonic

© 2005 Matsushita Electric Co., (M) Bhd. All rights reserved. Unauthorized copying and distribution is a violation of law. (Company No. 6100K)

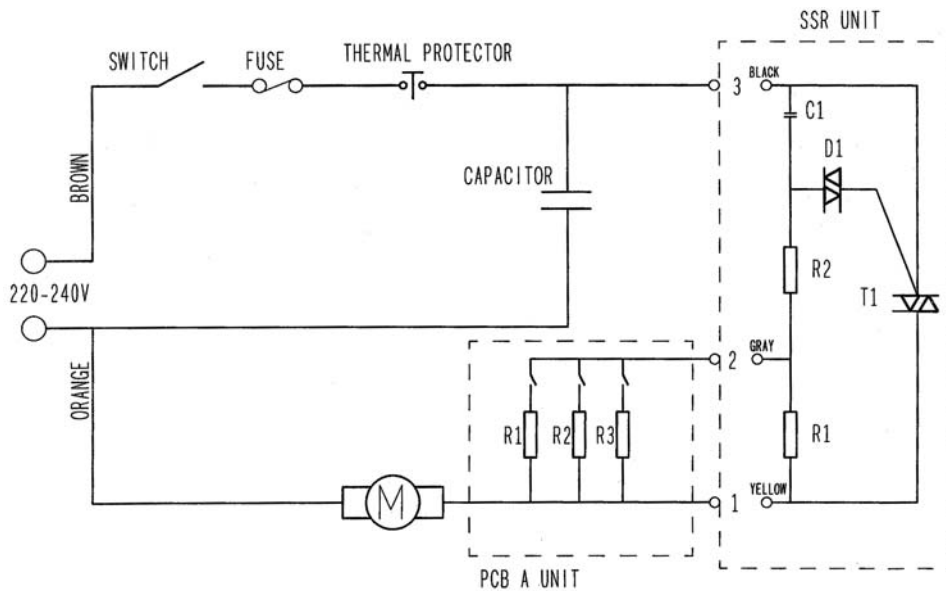
TABLE OF CONTENTS

	Page
SCHEMATIC DIAGRAM	2
CIRCUIT DIAGRAM	2
EXPLODED VIEW	3
REPLACEMENT PARTS LIST	4 - 5
EXPLODED VIEW (ATTACHMENT)	6
REPLACEMENT PARTS LIST (ATTACHMENT)	6
DISASSEMBLY INSTRUCTION	7 - 9
TROUBLESHOOTING	10
PACKING INSTRUCTION	11
PACKING LIST	11

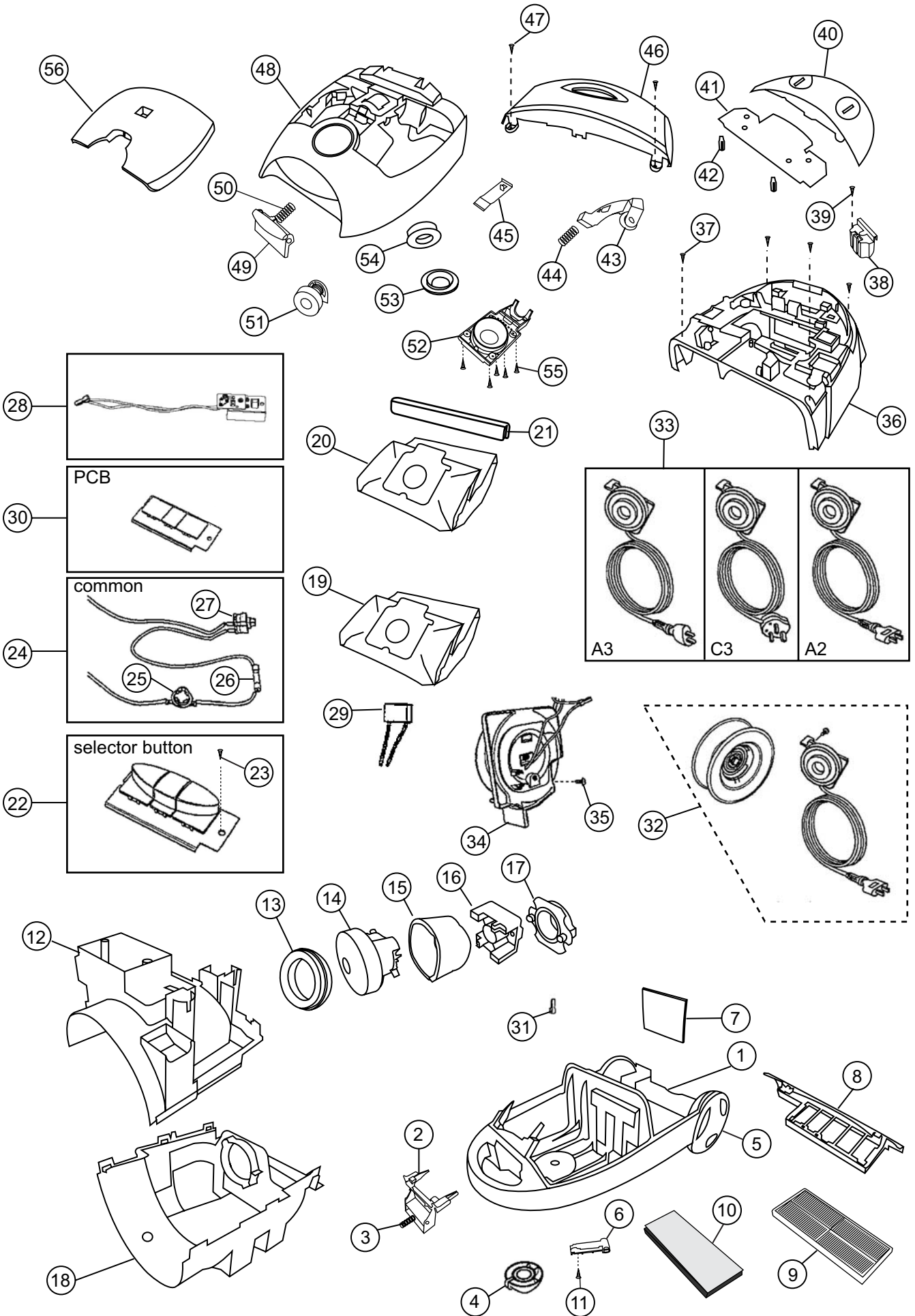
SCHEMATIC DIAGRAM



CIRCUIT DIAGRAM



EXPLODED VIEW



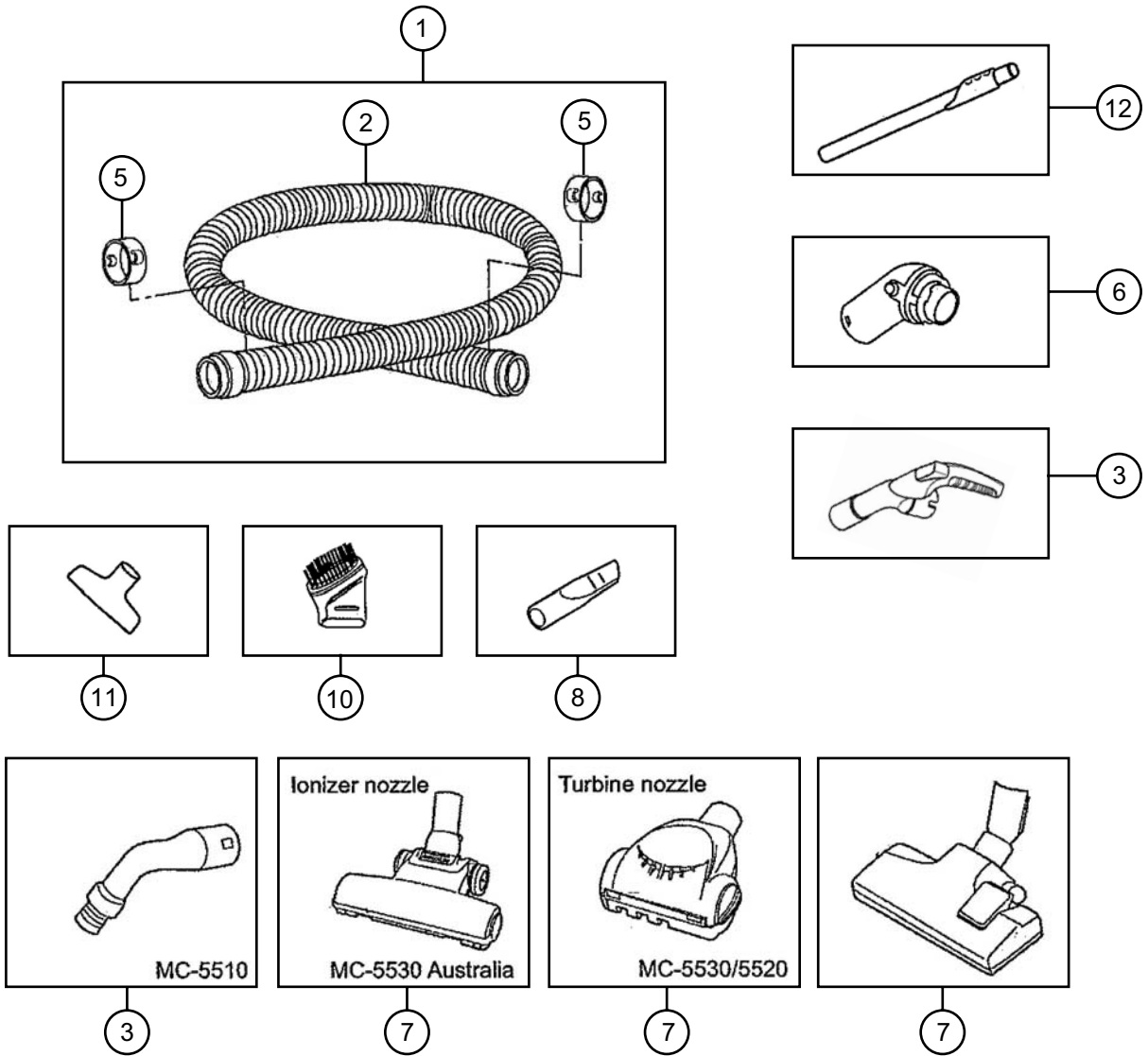
REPLACEMENT PART LIST

REF. NO	PART NAME	PART NUMBER	MODEL (PCS/SET)				REMARKS
			MC-5510	MC-5520	MC-5530	MC-5530	
			Others	Others	Others	Malaysia	
1	Lower Body	YMC03AXQ0H0	1	1	1	1	Black
2	Bag Clamper	YMC22KXQ000	1	1	1	1	
3	Bag Clamper Spring	YMC46HXQ000	1	1	1	1	
4	Caster Unit	YMC95C7K100	1	1	1	1	
5	Wheel	YMC01CXQ000	2	2	2	2	
6	Nozzle Holder	YMC76PXQ0H0	1	1	1	1	
7	Secondary Filter	YMC37KXQ000	1	1	1	1	
8	Rear Cover Plate	YMC11LXQ000	1	1	1	1	
9	Filter Assembly	YMC85KXQ000	-	-	1	1	Hepa
10	Filter Assembly	YMC85KXP000	1	1	-	-	Antibacteria
11	Pan Tap Screw	XTN4+16BFJ	1	1	1	1	
12	Upper Motor Cover	YMC64FXQ000	1	1	1	1	
13	Front Motor Supporter Rubber	YMC02FXP000	1	1	-	-	
(13)	Front Motor Supporter Rubber	YMC02FXQ000	-	-	1	1	
14	Motor Unit (Ametek)	YMC92FXL10C	-	-	1	1	AC220V ~ 240V 2000W
(14)	Motor Unit (LG)	YMC92FTB10C	-	1	-	-	AC220V ~ 240V 1800W
(14)	Motor Unit (LG)	YMC92FRT00C	1	-	-	-	AC220V ~ 240V 1600W
15	Noise Suppressor Unit	YMC99GXP000	-	-	1	1	
(15)	Noise Suppressor Unit	YMC99GXP000	1	1	-	-	
16	Motor Support Plate	YMC08FXQ000	-	-	1	1	
(16)	Motor Support Plate	YMC08FXP000	1	1	-	-	
17	Rear Motor Supporter Rubber	YMC03FXQ000	1	1	1	1	
18	Lower Motor Cover	YMC63FXQ000	1	1	1	1	
19	Paper Bag	YMC16KXQ00V	-	-	-	-	Malaysia
(19)	Paper Bag	YMC16KXQ000	-	-	1	-	Australia
20	Cloth Bag Unit	YMC99KXQ000	1	1	1	-	
21	Bag Fastener	YMC23KXQ000	1	1	1	1	
22	Selector Switch Unit	YMC89EKM100	1	1	1	1	
23	Pan Tap Screw	XTN4+12BFJ	1	1	1	1	
24	Main Switch	YMC98EXQ000	-	-	1	1	
(24)	Main Switch	YMC98EXP000	1	1	-	-	
25	Thermal Protector	YMC20WTB000	1	1	1	1	
26	Fuse Unit	YMC97WXP000	1	1	1	1	15A
27	ON/OFF Switch	YMC01EKK200	-	-	1	1	
(27)	ON/OFF Switch	YMC01ETB000	1	1	-	-	
28	SSR Unit	YMC58VXQ000	1	1	1	1	
29	Capacitor	YMC46FSG000	1	1	1	1	
30	PCB A Unit	YMC89VXQ000	1	1	1	1	
31	Close End Connector	CE-230	3	3	4	4	
32	Cord Reel Unit (E2)	YMC99NXQ007	1	1	1	-	Russia
(32)	Cord Reel Unit (C3)	YMC99NXQ00H	1	1	1	-	Saudi Arabia/Kuwait
(32)	Cord Reel Unit (C2)	YMC99NXQ00C	-	-	1	-	Saudi Arabia
(32)	Cord Reel Unit (Aust - A2)	YMC99NXQ00G	-	-	1	-	Australia/New Zealand
(32)	Cord Reel Unit (C2)	YMC99NXQ000	-	-	1	-	Middle East
(32)	Cord Reel Unit (C2)	YMC99NXP000	1	1	-	-	Middle East
(32)	Cord Reel Unit (C3)	YMC99NXQ00V	-	-	-	1	Malaysia
33	Power Cord Unit/ Railbase Unit (E2)	YMC91ESG10C	1	1	1	-	AC230V-240V - Russia (1.00mm ²)
(33)	Power Cord Unit/ Railbase Unit (C3)	YMC93EKM10H	1	1	1	-	AC220V-240V - Saudi Arabia/Kuwait (1.00mm ²)
(33)	Power Cord Unit/ Railbase Unit (C2)	YMC93EXQ00C	-	-	1	-	AC220V-240V - Saudi Arabia (1.00mm ²)
(33)	Power Cord Unit/ Railbase Unit (A2)	YMC97ETB10G	-	-	1	-	AC230V-240V - Australia/New Zealand (1.00mm ²)
(33)	Power Cord Unit/ Railbase Unit (C2)	YMC96EFF300	1	1	-	-	AC220-240V - Middle East (0.75mm ²)
(33)	Power Cord Unit/ Railbase Unit (C2)	YMC96EKM200	-	-	1	-	AC220V-240V - Middle East (1.00mm ²)
(33)	Power Cord Unit/ Railbase Unit (C3)	YMC93EKM10V	-	-	-	1	AC240V - Malaysia (1.00mm ²)
34	Body Partition Unit	YMC96AXP000	1	1	1	1	
35	Pan Tap Screw	XTN4+16BFJ	1	1	1	1	
36	Upper Body	YMC02AXQ0JD	-	-	1	1	Metalic Red
(36)	Upper Body	YMC02AXQ0ZL	-	-	1	-	Metalic Blue
(36)	Upper Body	YMC02AXQ0SS	-	-	1	-	Metalic Silver
(36)	Upper Body	YMC02AXQ0HD	-	1	-	-	Metalic Red
(36)	Upper Body	YMC02AXQ0HS	-	1	-	-	Metalic Silver
(36)	Upper Body	YMC02AXQ0RR	1	-	-	-	Red
37	Pan Tap Screw	XTN4+20BFJ	4	4	4	4	
38	Rear Nozzle Holder	YMC52PXQ0RR	1	-	1	1	Red
(38)	Rear Nozzle Holder	YMC52PXQ0AL	-	-	1	-	Blue
(38)	Rear Nozzle Holder	YMC52PXQ0VS	-	-	1	-	Silver
(38)	Rear Nozzle Holder	YMC52PXQ0HL	-	1	-	-	Blue
(38)	Rear Nozzle Holder	YMC52PXQ0HR	-	1	-	-	Red
39	Pan Tap Screw	XTN4+16BFJ	1	1	1	1	
40	Switch Pedal	YMC05EXQ0HB	1	1	1	1	
(40)	Switch Pedal	YMC05EXQ0RR	-	1	-	-	
41	Noise Suppressor Upper	YMC94NXQ000	1	1	1	1	
42	Switch Pedal Spring	YMC08EXQ000	2	2	2	2	
43	Brake Lever Unit	YMC94NXQ000	1	1	1	1	
44	Brake Lever Spring	YMC47NXQ000	1	1	1	1	
45	Dust Box Spring	YMC80KXQ000	1	1	1	1	
46	Body Cover Unit	YMC92AXQ0S0	-	1	1	1	
(46)	Body Cover Unit	YMC92AXN0H0	1	-	-	-	
47	Pan Tap Screw	XTN4+12BFJ	2	2	2	2	
48	Dust Cover	YMC60KXQ0JD	-	-	1	1	Metalic Red
(48)	Dust Cover	YMC60KXQ0ZL	-	-	1	-	Metalic Blue
(48)	Dust Cover	YMC60KXQ0SS	-	-	1	-	Metalic Silver
(48)	Dust Cover	YMC60KXQ0HD	-	1	-	-	Metalic Red
(48)	Dust Cover	YMC60KXQ0HS	-	1	-	-	Metalic Silver
(48)	Dust Cover	YMC60KXQ0RR	1	-	-	-	Red

REPLACEMENT PART LIST

REF. NO	PART NAME	PART NUMBER	MODEL (PCS/SET)				REMARKS
			MC-5510	MC-5520	MC-5530	MC-5530	
			Others	Others	Others	Malaysia	
49	Buckle	YMC01DXQ0RR	1	-	1	1	Red
(49)	Buckle	YMC01DXQ0AL	-	-	1	-	Blue
(49)	Buckle	YMC01DXQ0VS	-	-	1	-	Silver
(49)	Buckle	YMC01DXQ0HR	-	1	-	-	Red
(49)	Buckle	YMC01DXQ0HL	-	1	-	-	Blue
50	Switch Pedal Spring	YMC08EXQ000	1	1	1	1	
51	Indicator Pipe Unit	YMC99MXQ000	-	-	1	1	
(51)	Indicator Pipe Unit	YMC99MXN000	1	1	-	-	
52	Air Inlet Guide	YMC17HXQ000	1	1	1	1	
53	Air Intake Packing	YMC64HXQ000	1	1	1	1	
54	Suction Inlet	YMC60HXQ000	1	1	1	1	
55	Pan Tap Screw	XTN4+12BFJ	5	5	5	5	
56	Tool Storage Cover Unit	YMC88PXQ0JD	-	-	1	1	Metalic Red
(56)	Tool Storage Cover Unit	YMC88PXQ0ZL	-	-	1	-	Metalic Blue
(56)	Tool Storage Cover Unit	YMC88PXQ0SS	-	-	1	-	Metalic Silver
(56)	Tool Storage Cover Unit	YMC88PXP0JD	-	1	-	-	Metalic Red
(56)	Tool Storage Cover Unit	YMC88PXP0SS	-	1	-	-	Metalic Silver
(56)	Tool Storage Cover Unit	YMC88PXN0RR	1	-	-	-	Red

EXPLODED VIEW (ATTACHMENT)

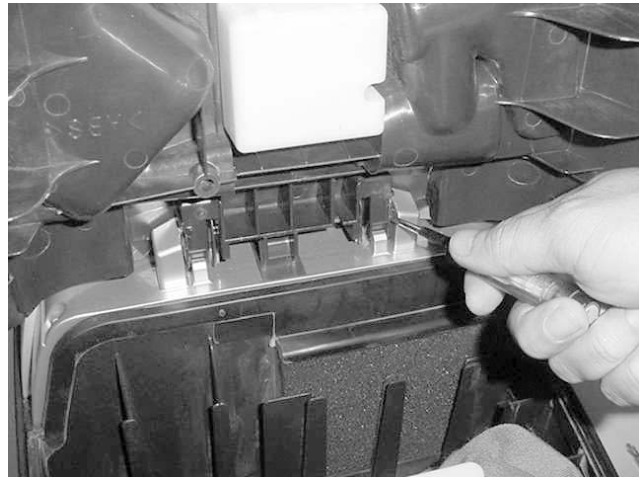


EXPLODED VIEW (ATTACHMENT)

REF. NO.	PART NAME	PART NUMBER	Model (set/pcs)				REMARKS
			MC-5510	MC-5520	MC-5530	MC-5530	
			Others	Others	Others	Malaysia	
1	Hose Assembly	AMC94PTB100	1	1	1	1	Grey
(1)	Hose Assembly	AMC94PTB10G	-	-	1	-	
2	Hose Unit	AMC84PTB100	1	1	1	1	Others
(2)	Hose Unit	AMC84PTB10G	-	-	1	-	Australia
3	Curved Wand Unit	AMC30P0R000	1	-	-	-	Antistatic
(3)	Curved Wand Unit	YMC98PTB000	-	1	1	1	Saber
4							
5	Hose Supporter	AMC24P0R100	2	2	2	2	
6	Connection Pipe Ass'y	YMC92PTB000	1	1	1	1	
7	Floor Nozzle Ass'y	YMC99RXQ000	1	1	1	1	
(7)	Floor Nozzle Ass'y (Turbine)	YMC96QXQ000	-	1	1	-	
(7)	Floor Nozzle Ass'y (Ionizer)	YMC96QXQ00G	-	-	1	-	Australia only
8	Crevice Tool	YMC60RCM400	1	1	1	1	
10	Dusting Brush Unit	YMC88RXQ000	1	1	1	1	
11	Upholstery Nozzle Unit	AMC86RXQ000	1	1	1	1	
12	Extension Wand Unit	YMC99PHP000	1	1	1	1	Metal Telescopic
(12)	Extension Wand Unit	YMC99PRR00V	-	-	-	1	Plastic Telescopic

DISASSEMBLY INSTRUCTION

1. Unlock the Hook on both side and lift up the DUST COVER.



2. Remove the REAR COVER PLATE where the FILTER ASSEMBLY assembled.



3. Remove the 2 pcs of screw from UPPER BODY UNIT and BODY COVER UNIT respectively as shown.



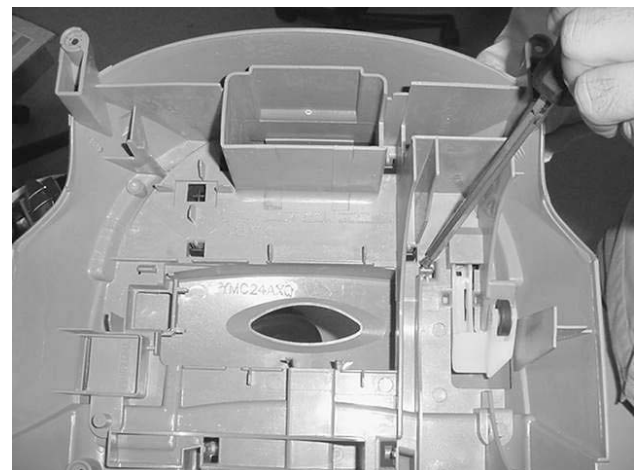
4. Remove another 2 pcs of screw to lift up the complete UPPER BODY UNIT.



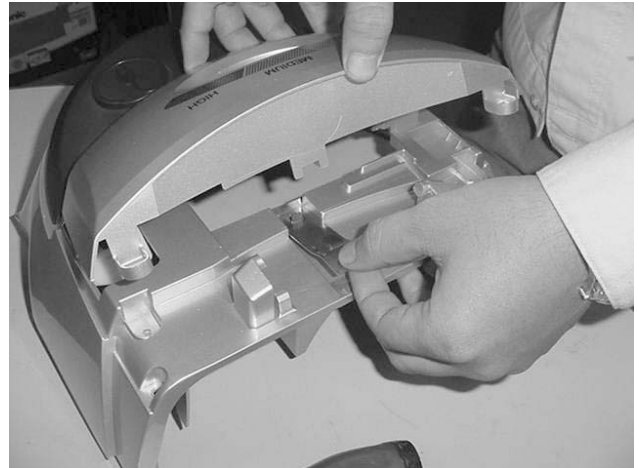
5. Lift up the complete UPPER BODY UNIT.



6. Unlock both hook of the BODY COVER UNIT.



7. Lift up the UPPER BODY UNIT and at the same time remove the DUST BOX SPRING.



8. Remove 1 pc of screw from the SELECTOR SWITCH UNIT.

Remove the Motor Cover Unit for any replacement of Motor, Switch, Fuse & etc.



TROUBLESHOOTING

Problem	Check
Motor does not operate.	<ul style="list-style-type: none"> ● Is the plug fully plugged into the wall socket?
Suction power is weak.	<ul style="list-style-type: none"> ● Replace the dust bag. ● Is something stuck in the hose or nozzle? ● Is the cover of the vacuum cleaner firmly closed?
The motor turns off during vacuuming.	<ul style="list-style-type: none"> ● Is the dust bag full? ● Is something stuck in the hose or nozzle? ● Is a safety device operating? Remove the refuse caught in the dust bag, nozzle, or hose. Wait approximately 5 to 25 minutes. The safety device will release and you can then resume operations.
Power cord won't retract completely.	<ol style="list-style-type: none"> ① Check that the power cord has not wound onto the spool unevenly. Pull it out two or three meters and wind it up again. ② Check that the power cord is not twisted. Repeatedly pull out and wind up the power cord while sliding the rewind lever (do not use excessive force when pulling the cord out).

If the problem remains after checking.	Return the vacuum cleaner (with the hose, extension wand and floor nozzle) to the store where you purchased it. Do not attempt to repair it yourself.
--	---

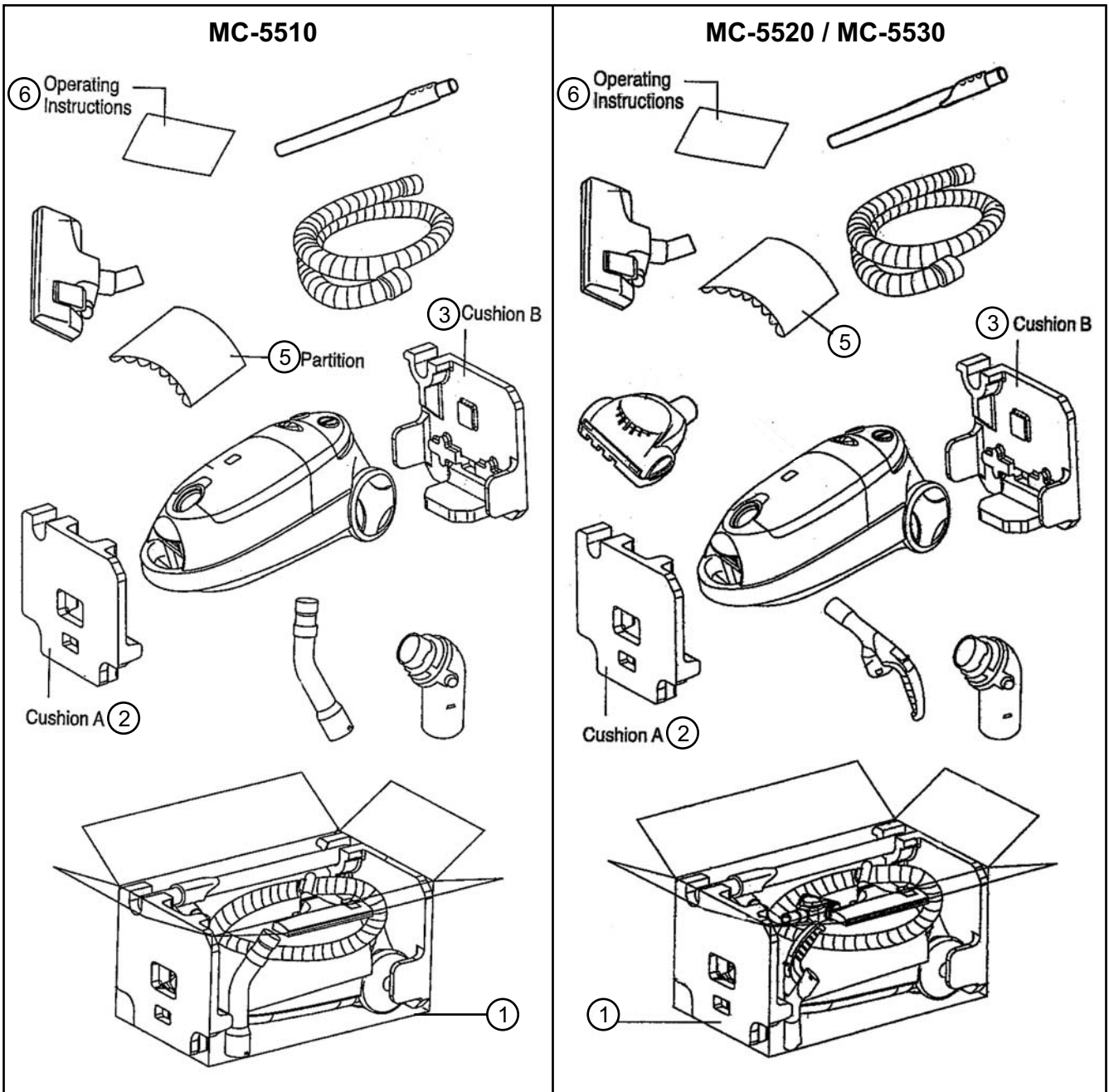
Caution

- During operation, the temperature of the vacuum cleaner body, power cord may increase to a certain degree. This is not abnormal.

Safety device

<ul style="list-style-type: none"> ● When the safety device is works, The safety device trips and the motor stops in order to prevent overheating of the motor when the vacuum is operated continuously with a full dust container, when garbage is clogging the nozzle or hose, or when the vacuum cleaner is operated for long periods with an obstructed intake or exhaust.
<ul style="list-style-type: none"> ● What to do... Replace the dust bag or remove the obstruction in the nozzle or hose.
<ul style="list-style-type: none"> ● When to use again... Wait about 5 to 25 minutes (depends on the surrounding temperature). The safety device will reset and you can use the vacuum cleaner again.

PACKING INSTRUCTION



PACKING LIST

REF. NO.	PART NAME	PART NUMBER	Model (set/pcs)				REMARKS
			MC-5510	MC-5520	MC-5530	MC-5530	
			Others	Others	Others	Malaysia	
1	Carton Box	YMC61ZXQ000	-	-	1	-	
(1)	Carton Box	YMC61ZXQ00V	-	-	-	1	
(1)	Carton Box	YMC61ZXQ00G	-	-	1	-	Australia
(1)	Carton Box	YMC61ZXP000	-	1	-	-	
(1)	Carton Box	YMC61ZXN000	1	-	-	-	
2	Cushion A	YMC69ZXQ000	1	1	1	1	
3	Cushion B	YMC70ZXQ000	1	1	1	1	
4							
5	Partition Board	YMC46ZXQ000	1	1	1	1	
6	Operating Instruction	YMC01ZXQ00C	1	1	1	-	Others
(6)	Operating Instruction	YMC01ZXQ00V	-	-	-	1	Malaysia
(6)	Operating Instruction	YMC01ZXQ007	1	1	1	-	Russia
(6)	Operating Instruction	YMC01ZXQ00A	-	-	1	-	Australia