

Service Manual

Electric Steam Iron



Model No. **NI-JWT980**
NI-JWT960

MIDDLE EAST

Please file and use this manual together with the service manual for Model No. NI-WT980/NI-WT960, Order No. PWEIG151202CE.

WARNING

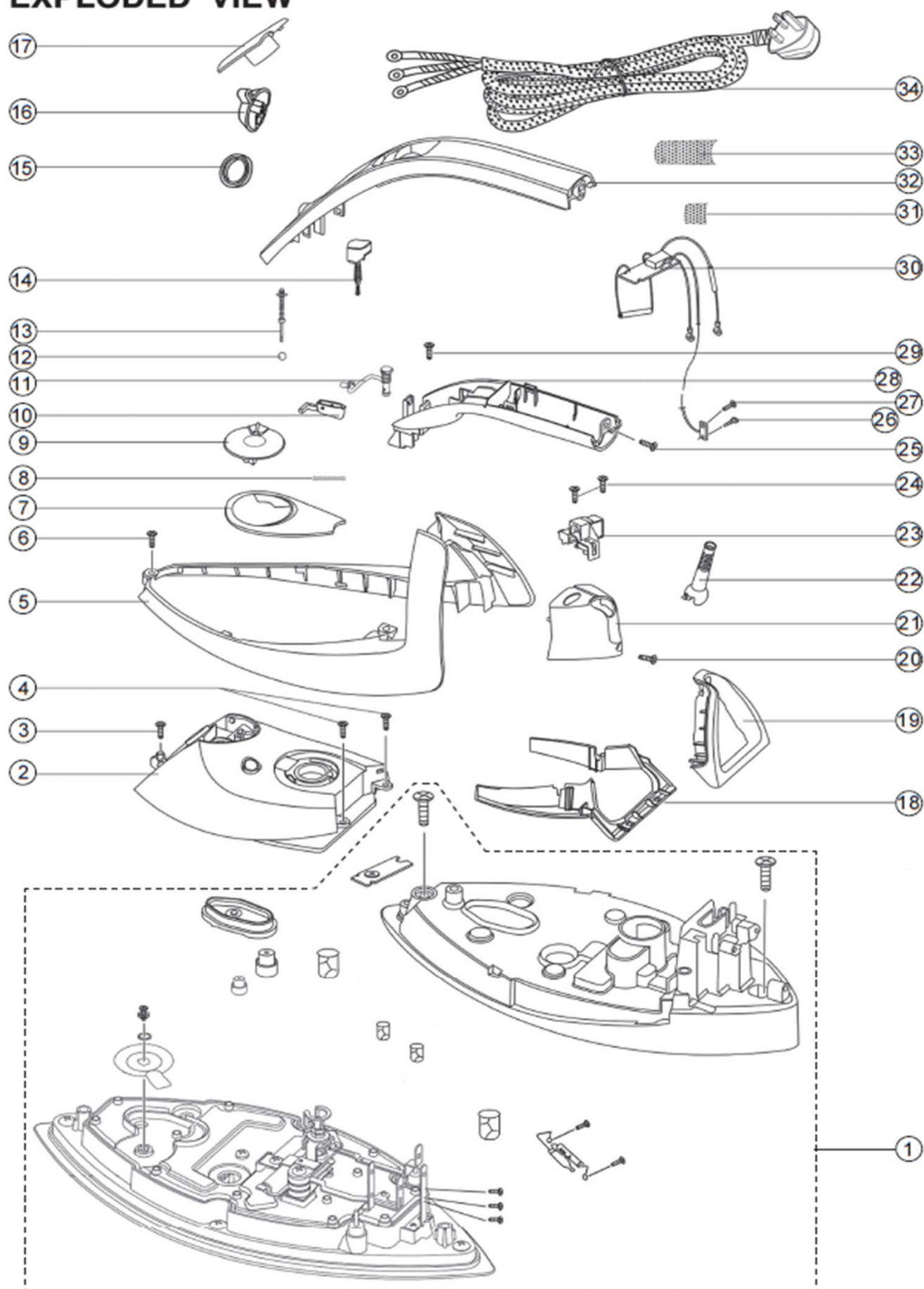
This service information is designed for experienced repair technicians only and is not designed for use by the general public. It does not contain warnings or cautions to advise non-technical individuals of potential dangers in attempting to service a product. Products powered by electricity should be serviced or repaired only by experienced professional technicians. Any attempt to service or repair the product or products dealt with in this service information by anyone else could result in serious injury or death.

There are special components used in this equipment which are important for safety. These parts are marked by ! in the Schematic Diagrams, Circuit Board Diagrams, Exploded views and Replacement Parts List. It is essential that these critical parts should be replaced with manufacture's specified parts to prevent shock, fire or other hazards. Do not modify the original design without permission of manufacturer.

Panasonic®

© Panasonic Corporation 2016 Unauthorized copying and distribution is a violation of law.

EXPLODED VIEW



Replacement parts list

Ref.No.	Part No.	Part Name & Description	Remarks	Per Unit
1	ANI1000HP61A	Soleplate Assy	NI-JWT980 *	1
	ANI1000HP62A		NI-JWT960 *	1
2	ANI1510P61T5	Water tank	NI-JWT980 *	1
	ANI1510P62T5		NI-JWT960 *	1
3	XTW4+12EFN	Water tank screw		1
4	XTW4+20EFN	Water tank screw B		2
5	ANI2090P5938	Heel rest A	NI-JWT980	1
	ANI2090P607T		NI-JWT960	1
6	XTN3+10BFN	Heel rest screw		1
7	ANI5660-P59	Light cover		1
8	ANI2170-P59	Temperature selector spring		1
9	ANI2160P597T	Temperature selector		1
10	ANI2140-P59S	Spray button		1
11	ANI2147-P59	Spray button shaft		1
12	ANI1701-344	Ball		1
13	ANI1850-P59	Valve steam assembly		1
14	ANI1705P597T	Jet of steam button assembly		1
15	ANI1633-A09	Water inlet rubber		1
16	ANI2110P237T	Steam/Dry selector		1
17	ANI1647P59T5	Water fill cover assembly		1
18	ANI2091P597T	Heel rest B		1
19	ANI2092P59T5	Heel rest C	NI-JWT980	1
	ANI2092P5964		NI-JWT960	1
20	ANI9021-P59	Rear handle cover screw		1
21	ANI2020P597T	Rear handle cover		1
22	ANI4646P594N	Cord bushing		1
23	ANI4663-P59	Fixed board of the cord		1
24	XTN4+16BFN	Fixed board screw		2
25	ANI9021-P59	Rear handle screw		1
26	ANI9022-003	Terminal board fixing screw		1
27	ANI9009-665	Terminal screw		1
28	ANI2000P597T	Handle assembly	NI-JWT980	1
	ANI2000P607T		NI-JWT960	1
29	XTN4+12BFN	Handle screw		1
30	ANI5541-P59	P.C.board assembly	NI-JWT980	1
31	ANI8868-P59	Incombustible sticker B	NI-JWT980	1
32	ANI2060P5938	Handle cover	NI-JWT980	1
	ANI2060P607T		NI-JWT960	1
33	ANI8869-P59	Incombustible sticker A	NI-JWT980	1
34	ANI4511-P59	Cord assembly		1
	ANI6737KP61A		NI-JWT980 *	1
	ANI6737KP62A	Rating label	NI-JWT960 *	1
	ANI810038P61A	Box	NI-JWT980 RED *	1
	ANI8100Z3P61A		NI-JWT980 SILVER *	1
	ANI81007TP62A		NI-JWT960 *	
	ANI8200KP61A	Operating instructions	*	1

* Supplied from Japan