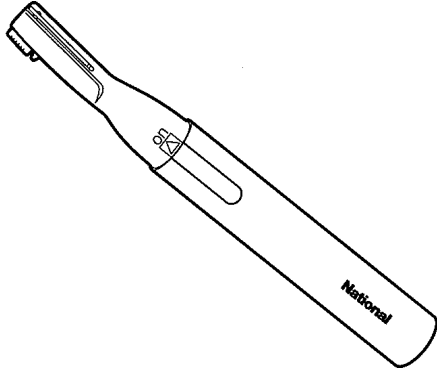


Service Manual

Eyebrow Styler

ES2191-A3



SPECIFICATIONS

Power Source	DC1.5V (1XAAA alkaline dry cell battery)
Weight	15g (not including battery)
<SUPPLIED ACCESSORY>	
Cleaning brush	

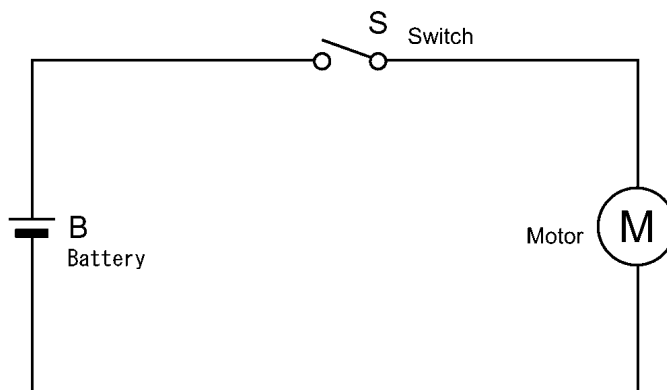
⚠WARNING

This service literature is designed for experienced repair technicians only and is not designed for use by the general public. It does not contain warnings or cautions to advise non-technical individuals of potential dangers in attempting to service a product. Products powered by electricity should be serviced or repaired only by experienced professional technicians. Any attempt to service or repair the product or products dealt with in this service information by anyone else could result in serious injury or death.

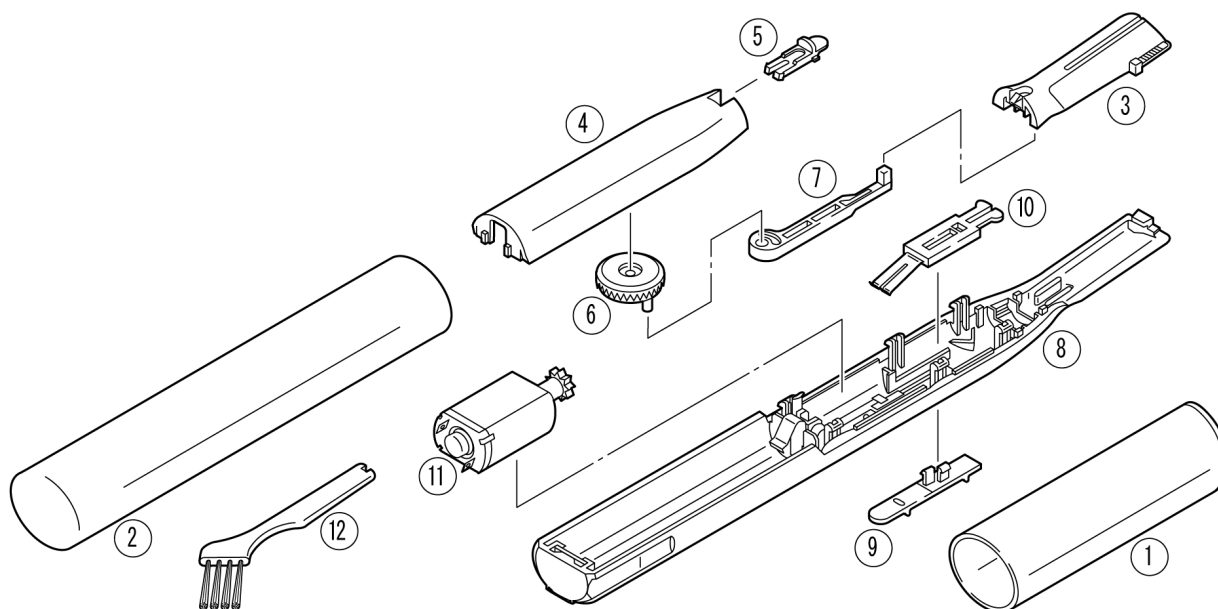
CONTENTS

	Page	Page	
1 SCHEMATIC DIAGRAM	2	3 REPLACEMENT PARTS LIST	2
2 EXPLODED VIEW	2		

1 SCHEMATIC DIAGRAM



2 EXPLODED VIEW



3 REPLACEMENT PARTS LIST

NOTE:

*A=available as an optional accessory

*B=only available as set

*C=available individually

Ref. No.	Part No.	Part Name & Description	Remarks	Per Unit
1	WES108A3187	PROTECTIVE CAP		1
2	WES2191A3128	BATTERY COVER	Others	1
2	WES2191A3129	BATTERY COVER	Taiwan	1
3	WES2191W1058	BLADE		1
4	WES108H3067	HOUSING B		1
5	WES107H3247	RELEASE BUTTON		1
6	WES107L1377	CAM GEAR		1
7	WES107L1087	DRIVING BAR		1
8	WES108H3057	HOUSING A		1
9	WES107H3207	SWITCH HANDLE		1
10	WES107L2447	SWITCH CONTACT		1
11	WES107L1007	DC MOTOR		1
12	WES76806761	CLEANING BRUSH		1
-	WES2191A8108	OPERATING INSTRUCTIONS		1