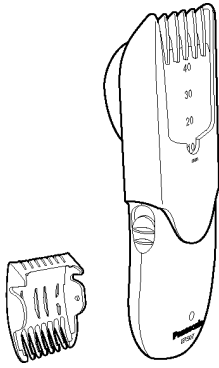


# Service Manual

AC/Rechargeable Hair Trimmer

ER507-E2



## SPECIFICATIONS

Power source	AC230V, 50Hz
Power consumption	5W
Motor voltage	1.2V DC
Rated time	40 minutes
Charging time	12 hours
Weight	150g (including attachment) 310g (adaptor)
Supplied accessories	10/20/30/40mm Comb Attachment 4mm/Thinning Attachment Oil Cleaning Brush

### WARNING

This service information is designed for experienced repair technicians only and is not designed for use by the general public. It does not contain warnings or cautions to advise non-technical individuals of potential dangers in attempting to service a product. Products powered by electricity should be serviced or repaired only by experienced professional technicians. Any attempt to service or repair the product or products dealt with in this service information by anyone else could result in serious injury or death.

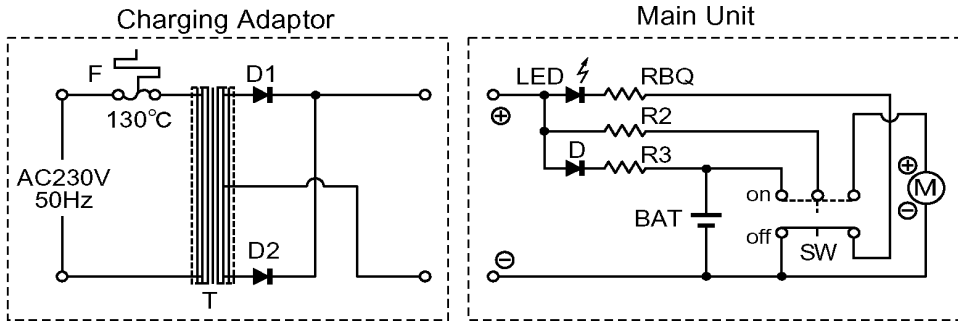
## CONTENTS

	Page		Page
1 SCHEMATIC DIAGRAM .....	2	5 TROUBLESHOOTING GUIDE .....	5
2 WIRING CONNECTION DIAGRAM .....	2	6 EXPLODED VIEW .....	6
3 DISASSEMBLY INSTRUCTIONS .....	3	7 REPLACEMENT PARTS LIST .....	6
4 ASSEMBLY INSTRUCTIONS .....	4		

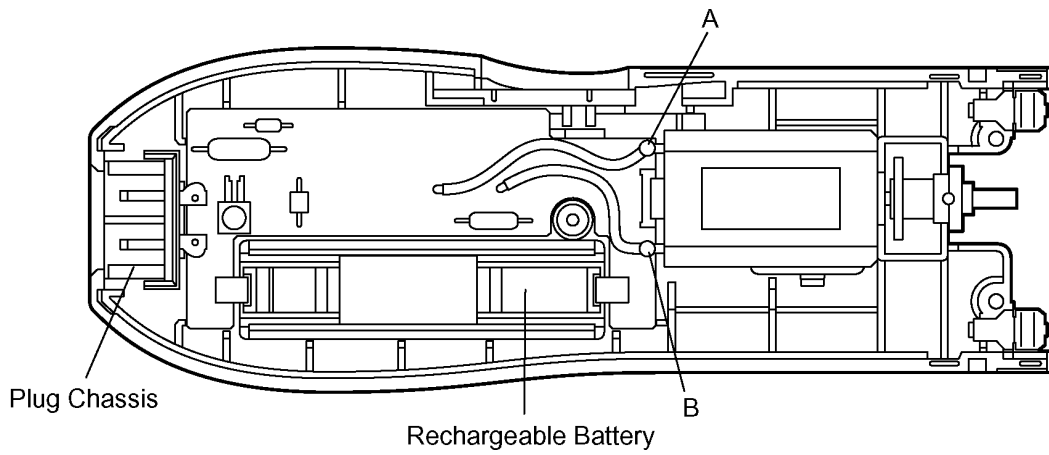
# Panasonic

© 2002 Matsushita Electric Works Ltd. All rights reserved. Unauthorized copying and distribution is a violation of law.

# 1 SCHEMATIC DIAGRAM



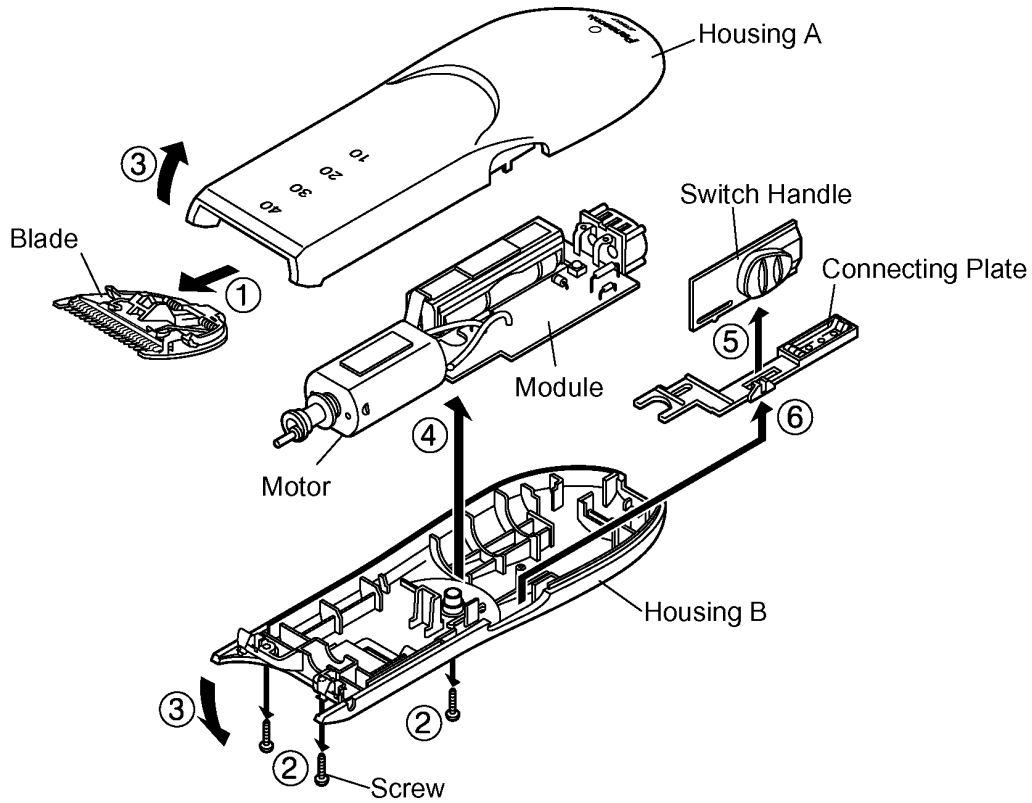
# 2 WIRING CONNECTION DIAGRAM



### 3 DISASSEMBLY INSTRUCTIONS

Follow the procedure below to disassemble the main body.

1. Remove the attachment and the blade.
2. Loosen two screws tightening the blade springs and one housing screw.
3. Separate housing A and B by opening at the blade side.
4. Take out the motor and module from housing B.
5. Remove the switch handle.
6. Remove the connecting plate.



## 4 ASSEMBLY INSTRUCTIONS

1. Place the connecting plate and the switch handle onto the housing B with OFF position.

**NOTE 1: Do not touch the contact metal plate to prevent its deformation. (See Fig.2-A.)**

**NOTE 2: Set the switch handle into the slit of connecting plate firmly. (See Fig.2-B.)**

2. Set the module and the motor placing the sticker on top. (See Fig.2-C.)

Press fit the lead wires neatly. (See Fig.2-D.)

**NOTE: Make sure if the motor rotates when switching ON.**

3. Close the housing A and B, and tighten three screws.

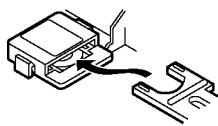
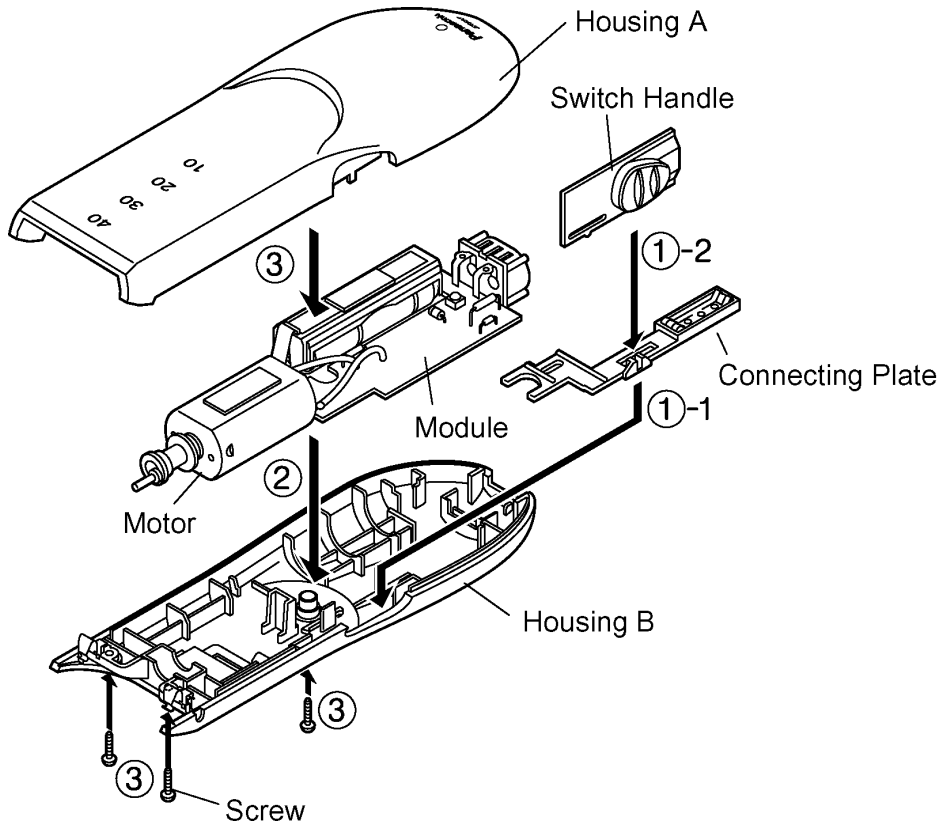


Fig.2-A

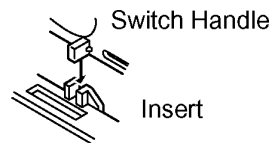


Fig.2-B

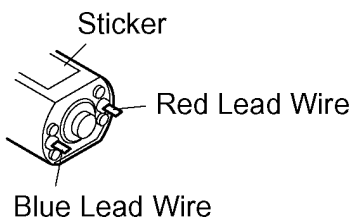


Fig.2-C

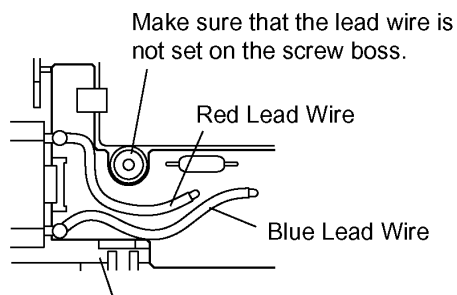
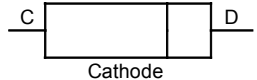


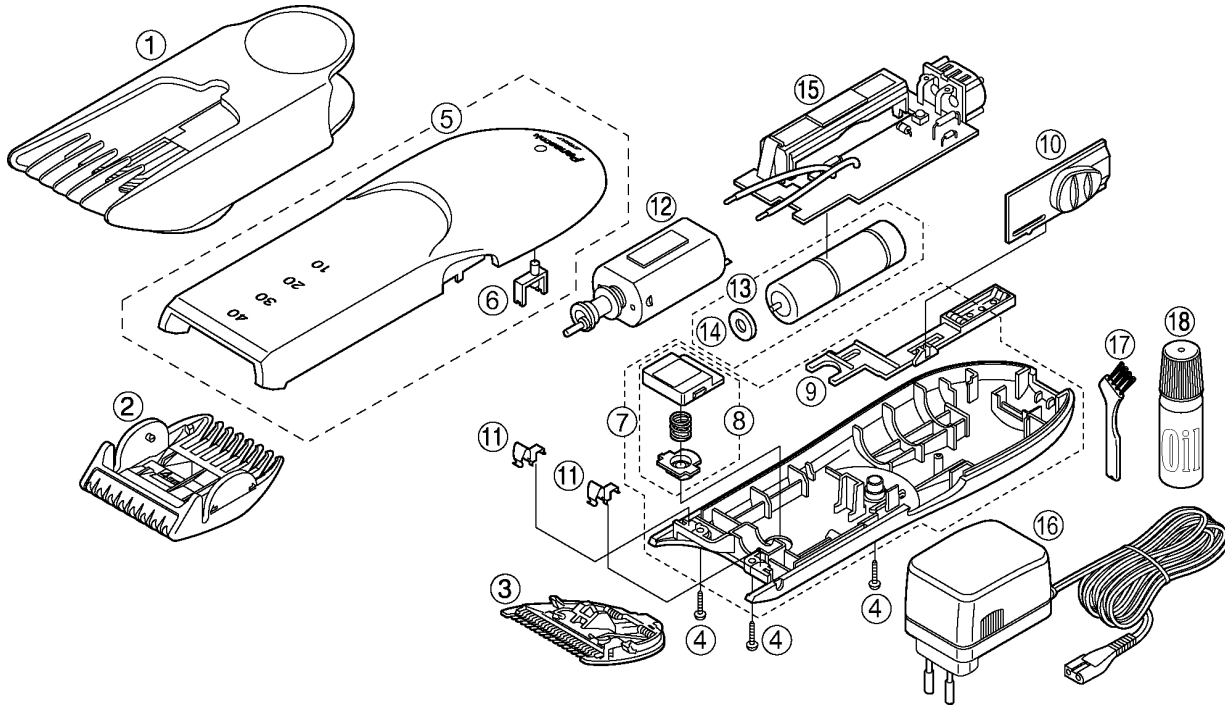
Fig.2-D

# 5 TROUBLESHOOTING GUIDE

(Refer to WIRING CONNECTION DIAGRAM)

< TROUBLE >	<CHECK.>		<REMEDY>
Does not operate.	<p align="center">&lt;CHECK CHARGING ADAPTOR.&gt;</p> Supply rated voltage to the adaptor. OK if it is approx. DC 1.6 - 2.4V between the terminals of the plug.	NO →	Replace charging adaptor.
↓ OK			
	<p align="center">&lt;CHECK SWITCH.&gt;</p> Replace the battery. If there is continuity between A and B, the switch is normal.	NO →	Replace the switch terminal plate.
↓ OK			
	<p align="center">&lt;CHECK MOTOR.&gt;</p> The motor should turn when 1.2V DC is applied to terminals.	NO →	Replace the motor.
↓ OK			
	<p align="center">&lt;CHECK MODULE. (RESISTER &amp; DIODE)&gt;</p> 1 Measurement of resistance values. RBQ = 100Ω R2 = 0.24Ω R3 = 3.3Ω 2 Check polarity of diode. Tester range = 100Ω Ok if; - approximately 80Ω when (+) on C side and (-) on D side. - infinite when (+) and (-) reversed.  NOTE: The resistance value will vary depending on the internal resistance of the tester.	NO →	Replace the module.
			
↓ OK			
	<p align="center">&lt;CHECK RECHARGEABLE BATTERY.&gt;</p> Okay if the voltage of rechargeable battery is more than approximately 1.2V DC between (+) and (-) terminals.	NO →	Replace rechargeable battery.
↓ OK			
	<p align="center">&lt;CHECK CHARGING CURRENT.&gt;</p> 1 Unsolder (+) terminal of battery, and connect the adaptor to AC power supply with switch OFF. Measure the charging current if it is approximately 130 ± 15mA. 2 The case of LED does not lit even the charging adaptor is normal, either LED or RBQ may be damaged.	OK →	Replace module.

## 6 EXPLODED VIEW



## 7 REPLACEMENT PARTS LIST

### NOTE

\*A=available as an optional accessory

\*B=only available as set

\*C=available individually

Ref. No.	Part No.	Part Name & Description	Remarks	Per Unit
1	WER507S7458	COMB ATTACHMENT		1
2	WER507A7398	4MM COMB ATTACHMENT		1
3	WER936Y	BLADE BLOCK		1
4	WER203K6008	SCREW	*C K2*8	3
5	WER507A3058	HOUSING A		1
6	WER507X3487	LAMP COVER		1
7	WER507A3068	HOUSING B		1
8	WER507A3608	LOCK BUTTON		1
9	WER507L1568	CONNECTING PLATE		1
10	WER507A3208	SWITCH HANDLE		1
11	WER561L0167	SPRING FOR BLADE	*B (2PCS/PK)	2
12	WER507L1007	MOTOR		1
13	WER121L2508	RECHARGEABLE BATTERY	NI-MH	1
14	WES778L0307	BLOTTING PAPER		1
15	WER507L2107	MODULE		1
16	WER507K7664	CHARGING ADAPTOR	C-2 PLUG	1
17	WES76806761	CLEANING BRUSH		1
18	WER203X7918	OIL		1
-	WER507A8008	INDIVIDUAL BOX		1
-	WER507A8108	OPERATING INSTRUCTIONS		1