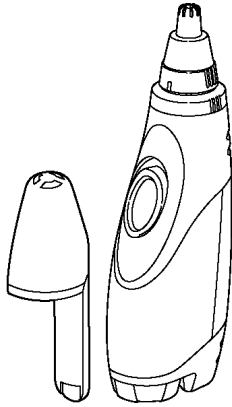


# Service Manual

Nose & Ear Hair Trimmer

ER430-X8



## SPECIFICATIONS

Power source	DC 1.5V (one "AA" Alkaline battery)
Weight (including battery)	125g

### **⚠ WARNING**

This service information is designed for experienced repair technicians only and is not designed for use by the general public. It does not contain warnings or cautions to advise non-technical individuals of potential dangers in attempting to service a product. Products powered by electricity should be serviced or repaired only by experienced professional technicians. Any attempt to service or repair the product or products dealt with in this service information by anyone else could result in serious injury or death.

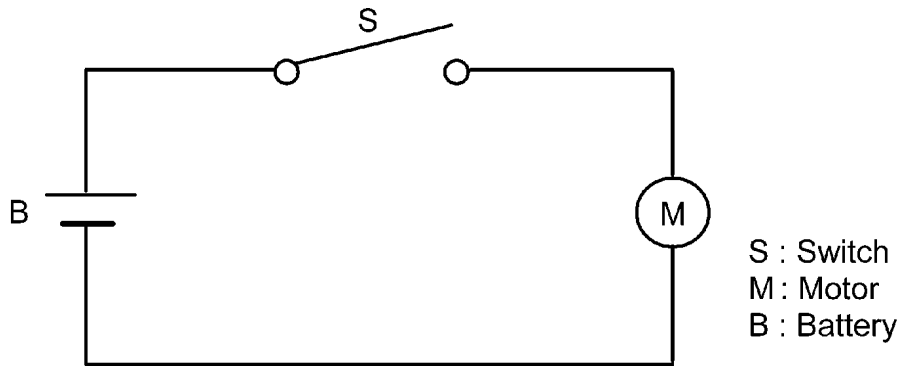
## CONTENTS

	Page		Page
1 SCHEMATIC DIAGRAM .....	2	3 REPLACEMENT PARTS LIST .....	3
2 EXPLODED VIEW .....	3		

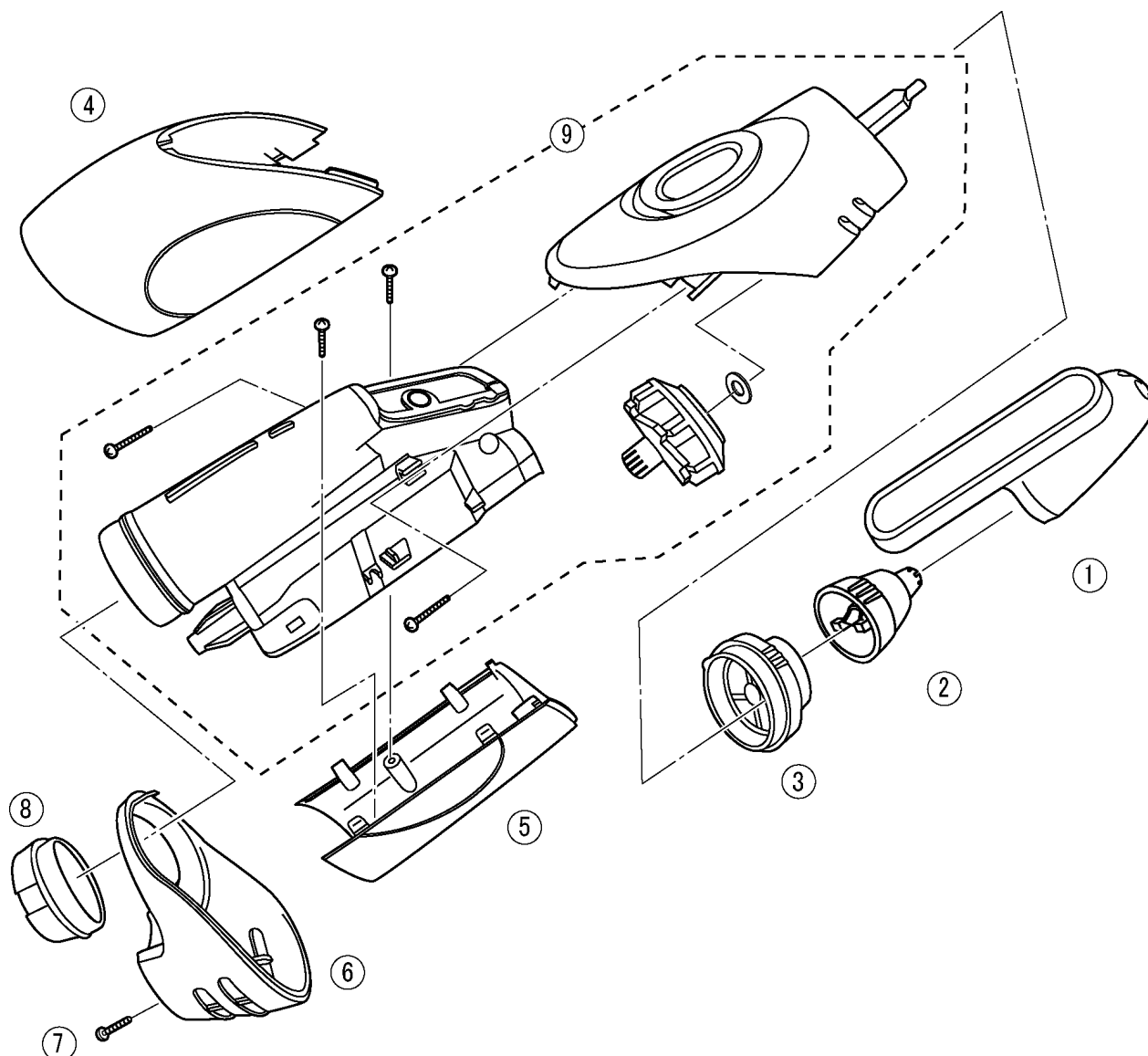
# Panasonic

© 2006 Matsushita Electric Works, Ltd. All rights reserved. Unauthorized copying and distribution is a violation of law.

# 1 SCHEMATIC DIAGRAM



## 2 EXPLODED VIEW



## 3 REPLACEMENT PARTS LIST

### NOTE:

\*A=available as an optional accessory

\*B=only available as set

\*C=available individually

Ref.No.	Part No.	Part Name & Descriptions	Remarks	Per Unit
1	WER430X3188	PROTECTIVE CAP		(BG) 1
2	WER416K1058	BLADE BLOCK		(BG) 1
3	WER430L0018	BLADE MOUNTING BASE		(BG) 1
4	WER430K3088	FRONT PANEL		(BG) 1
5	WER430K3098	REAR PANEL		(BG) 1
6	WER430K3118	BOTTOM COVER		(BG) 1
7	WER430S6008	P TIGHT SCREW	K2-8	(BG) 1
8	WER430K3129	BATTERY COVER	for EUROPE	(BG) 1
8	WER430K3120	BATTERY COVER	for Hong Kong	(BG) 1
9	WER430K4008	BODY BLOCK		(BG) 1
-	WER430K8009	INDIVIDUAL BOX	for EUROPE	(BG) 1
-	WER430K8000	INDIVIDUAL BOX	for Hong Kong	(BG) 1
-	WER430K8109	OPERATING INSTRUCTIONS	for EUROPE	(BG) 1
-	WER430K8100	OPERATING INSTRUCTIONS	for Hong Kong	(BG) 1