

Service Manual

Professional AC/Rechargeable Hair Clipper

Model No. **ER1611**

Middle East
Korea



Please file and use this manual together with the service manual for Model No. ER160, Order No. SD0407A53C3.

WARNING

This service information is designed for experienced repair technicians only and is not designed for use by the general public. It does not contain warnings or cautions to advise non-technical individuals of potential dangers in attempting to service a product. Products powered by electricity should be serviced or repaired only by experienced professional technicians. Any attempt to service or repair the product or products dealt with in this service information by anyone else could result in serious injury or death.

IMPORTANT SAFETY NOTICE


There are special components used in this equipment which are important for safety. These parts are marked by  in the Schematic Diagrams, Circuit Board Diagrams, Exploded Views and Replacement Parts List. It is essential that these critical parts should be replaced with manufacturer's specified parts to prevent shock, fire or other hazards. Do not modify the original design without permission of manufacturer.

TABLE OF CONTENTS

	PAGE	PAGE
1 Warning-----	2	
2 Specifications -----	2	
3 Exploded View and Replacement Parts List -----	3	

1 Warning

Caution:

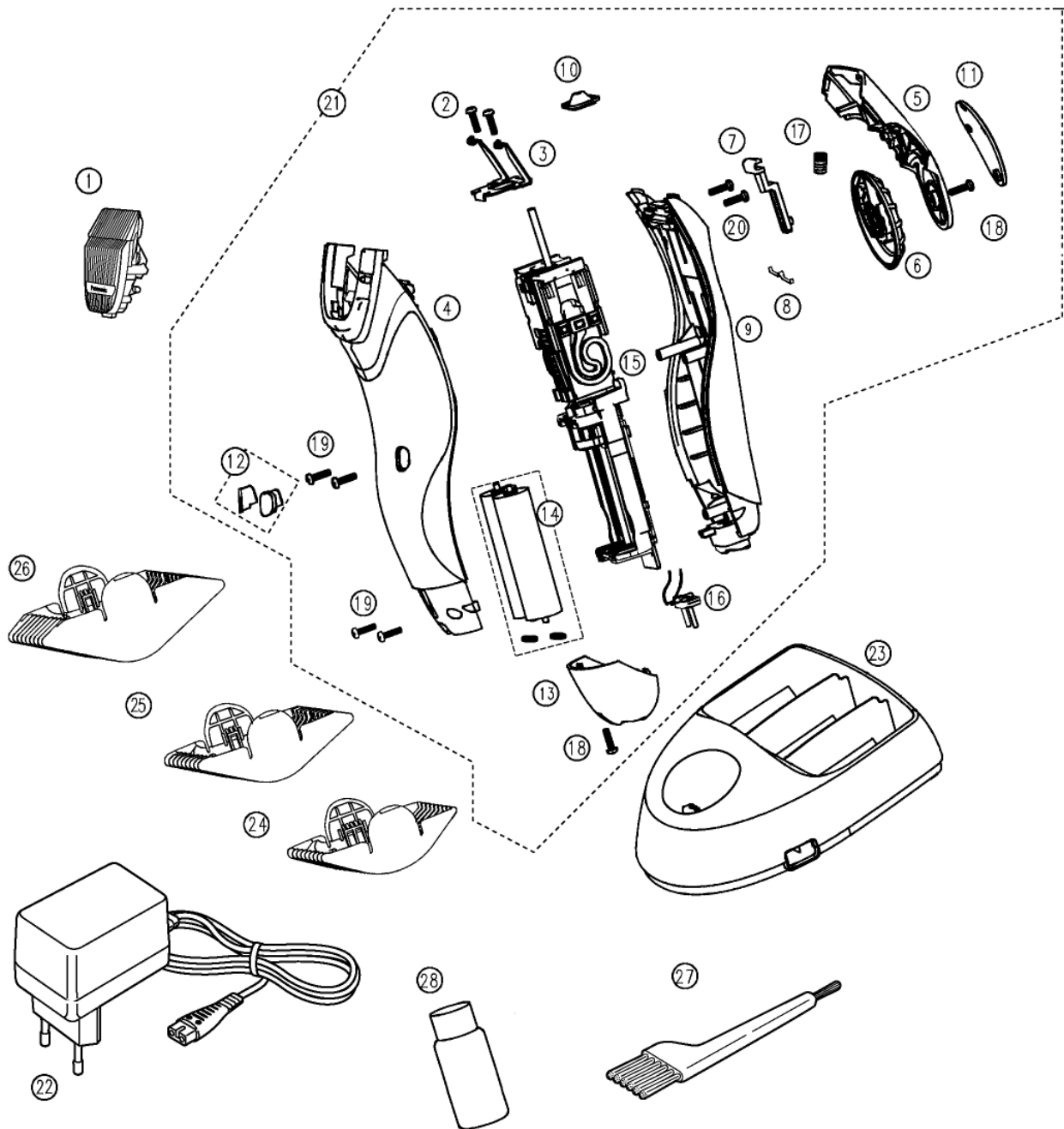
- Pb free solder has a higher melting point than standard solder; Typically the melting point is 50 - 70°F (30 - 40°C) higher. Please use a soldering iron with temperature control and adjust it to 750 ± 20°F (400 ± 10°C). In case of using high temperature soldering iron, please be careful not to heat too long.
- Pb free solder will tend to splash when heated too high (about 1100°F / 600°C).

2 Specifications

Power source	AC 100-240V, 50-60Hz (Automatic voltage conversion)
Motor voltage	2.4V DC
Charging time	1 Hour
Weight	262g
Supplied accessories	3/4 mm comb attachment (Middle East Only)
	6/9 mm comb attachment (Middle East Only)
	12/15 mm comb attachment (Middle East Only)
	Charging stand (Middle East Only)
	Cleaning brush
	Oil

3 Exploded View and Replacement Parts List

Model No. : ER1611 Exploded View



Model No. : ER1611 Parts List

Safety	Ref. No.	Part No.	Part Name & Description	Q'ty	Remarks
	1	WER9900E	BLADE BLOCK	1	
	2	WER160L9006	SCREW	2	(M2.5-8)
	3	WER160L0167	BLADE SPRING	1	
	4	WER1610K3068	HOUSING B	1	
	5	WER1611S1588	BLADE HOLDER A	1	(Middle East)
	5	WER1610S1589	BLADE HOLDER A	1	(Korea)
	6	WER1610K3288	DIAL	1	
	7	WER160L1557	CONNECTION BAR	1	
	8	WER160L0457	DIAL CLICK SPRING	1	
	9	WER1611K3058	HOUSING A	1	
	10	WER160L0137	DUST-PROOF RUBBER	1	
	11	WER1610K0327	FINGER GRIP	1	
	12	WER1610H3767	SCREW CAP	2	(2PCS/PK)
	13	WER1611K3178	BOTTOM COVER	1	(Middle East)
	13	WER1611K3179	BOTTOM COVER	1	(Korea)
	14	WER160L2506	RECHARGEABLE BATTERY	2	(Ni-Mh Type), (2PCS/PK)
	15	WER160L1007	LINEAR MOTOR ASSEMBLY	1	(Middle East)
	16	WER160L2157	PLUG CHASSIS	1	(Korea)
	17	WER160L0197	SPRING	1	
	18	WER160L9106	SCREW	2	(M2.0-6)
	19	WER160L9206	P-TIGHT SCREW	4	(M2.0-8)
	20	WER160L9306	P-TIGHT SCREW	2	(M2.0-12)
	21	WER1611K3038	BODY BLOCK	1	(Middle East)
	21	WER1611K3039	BODY BLOCK	1	(Korea)
	22	WER1611K7675	ADAPTOR	1	(C-2PLUG)
	22	WER1611K7671	ADAPTOR	1	(KS PLUG)
	23	WER1611K7188	CHARGING STAND	1	
	24	WER1610K7397	COMB ATTACHMENT A	1	(3/4mm)
	25	WER1610K7427	COMB ATTACHMENT B	1	(6/9mm)
	26	WER1610K7407	COMB ATTACHMENT C	1	(12/15mm)
	27	WER1510K7087	CLEANING BRUSH	1	
	28	WER203X7918	OIL	1	
	-	WER1611K8008	INDIVIDUAL BOX	1	(Middle East)
	-	WER1611K8009	INDIVIDUAL BOX	1	(Korea)
	-	WER1611K8108	OPERATING INSTRUCTIONS	1	(Middle East)
	-	WER1611K8109	OPERATING INSTRUCTIONS	1	(Korea)