

# Service Manual

## AC/Rechargeable Professional Razor

Model No. **ER-RZ10**

Europe



### **⚠ WARNING**

This service information is designed for experienced repair technicians only and is not designed for use by the general public. It does not contain warnings or cautions to advise non-technical individuals of potential dangers in attempting to service a product. Products powered by electricity should be serviced or repaired only by experienced professional technicians. Any attempt to service or repair the product or products dealt with in this service information by anyone else could result in serious injury or death.

### **IMPORTANT SAFETY NOTICE**

There are special components used in this equipment which are important for safety. These parts are marked by ⚠ in the Schematic Diagrams, Circuit Board Diagrams, Exploded Views and Replacement Parts List. It is essential that these critical parts should be replaced with manufacturer's specified parts to prevent shock, fire or other hazards. Do not modify the original design without permission of manufacturer.

•The specifications and the parts of this product are subject to change without notice for performance improvement or other purposes.

## TABLE OF CONTENTS

	PAGE	PAGE
<b>1 Warning</b> -----	2	
<b>2 Specifications</b> -----	2	
<b>3 Troubleshooting Guide</b> -----	3	
<b>4 Disassembly and Assembly Instructions</b> -----	4	
4.1. Disassembly Instructions-----	4	
4.2. Assembly Instructions-----	5	
<b>5 Exploded View and Replacement Parts List</b> -----	6	
5.1. Exploded View for ER-RZ10-----	6	
5.2. Replacement Parts List for ER-RZ10-----	7	

**Panasonic**<sup>®</sup>

© Panasonic Corporation 2017. All rights reserved.  
Unauthorized copying and distribution is a violation of law.

# 1 Warning

**Caution:**

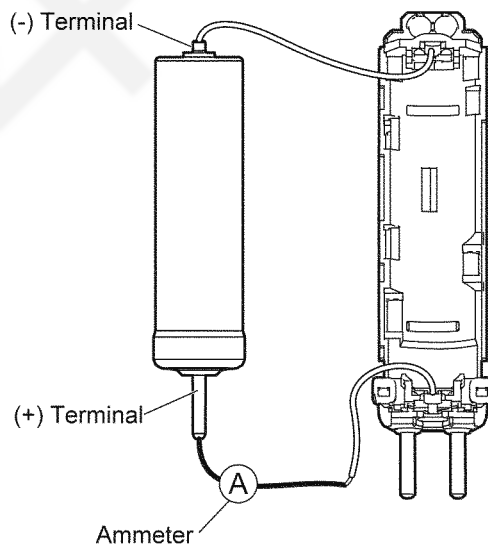
- Pb free solder has a higher melting point than standard solder; Typically the melting point is 50 - 70°F (30 - 40°) higher. Please use a soldering iron with temperature control and adjust it to 750 ± 20°F (400 ± 10°). In case of using high temperature soldering iron, please be careful not to heat too long.
- Pb free solder will tend to splash when heated too high (about 1100°F / 600°C).

# 2 Specifications

Power source	100-240 V AC, 50-60 Hz
Motor voltage	1.2 V
Charging time	Approx. 1 hour

### 3 Troubleshooting Guide

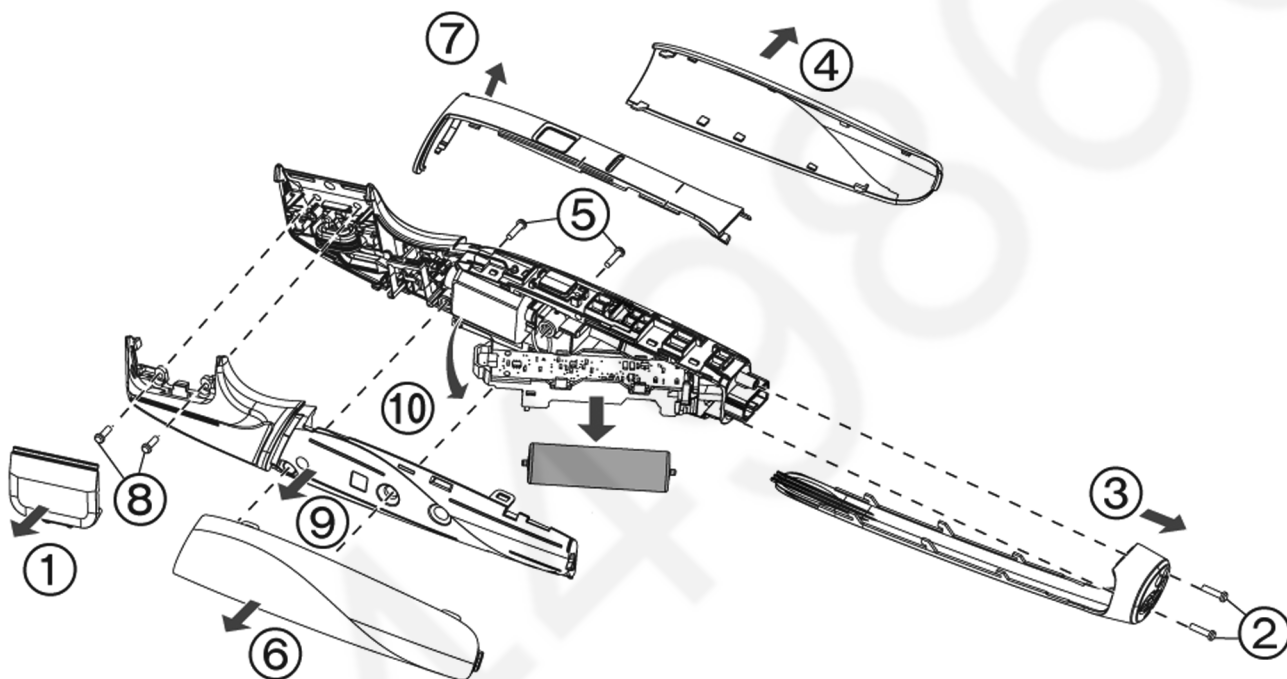
<TROUBLE>	<CHECK>	<REMEDY>
Does not operate.	<p>(Connect adaptor and charge for 10 seconds. Confirm if the switch turn ON.)</p> <p>&lt;CHECK ADAPTOR.&gt;                      Supply the rated voltage to the adaptor. OK if it is approximately 1.7 V DC between the terminals of the plug.</p>	NO → Replace the adaptor.
	<p>↓ OK</p> <p>&lt;CHECK MOTOR.&gt;                      The motor should turn when 1.2 V DC is applied to terminals.</p>	NO → Replace the motor.
	<p>↓ OK</p> <p>&lt;CHECK RECHARGEABLE BATTERY.&gt;                      OK if the voltage of rechargeable battery is more than approximately 1.2 V DC between (+) and (-) terminals.</p>	NO → Replace the rechargeable battery.
	<p>↓ OK</p> <p>&lt;CHECK MODULE.&gt;                      Replace the battery and set the switch ON.                      Connect the adaptor with the plug chassis and supply the rated voltage.                      OK if it is more than 1.2 V DC between (1) and (2).                      NOTE: Make sure of the electrical polarity on adaptor.</p>	NO → Replace the module assembly.
Does not charge. Does not light the charge indicator lamp.	<p>&lt;CHECK RECHARGEABLE BATTERY.&gt;                      OK if the voltage of rechargeable battery is more than approximately 1.2 V DC between (+) and (-) terminals.</p>	NO → Replace the adaptor.
	<p>↓ OK</p> <p>&lt;CHECK CHARGING CURRENT.&gt;                      Replace the battery and wire the module &amp; battery assembly referring with the figure.                      Check charging current, if it is more than 900 mA when connecting AC power source with swith OFF.</p>	OK → Replace the module assembly.



## 4 Disassembly and Assembly Instructions

### 4.1. Disassembly Instructions

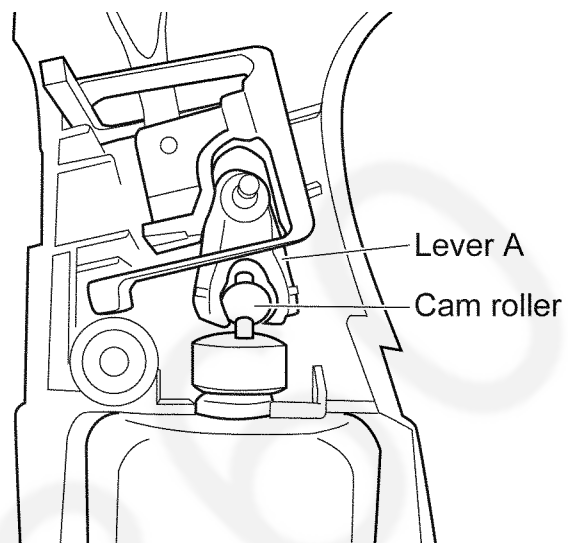
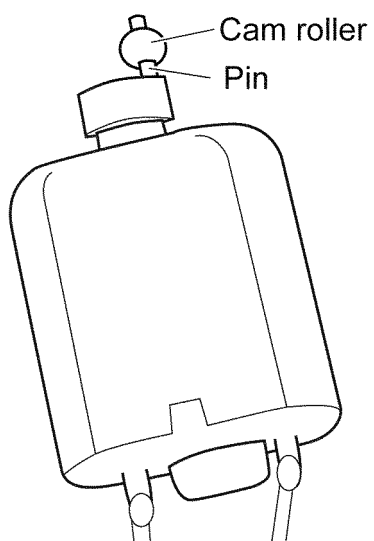
1. Remove the blade.
  2. Remove two screws from the bottom.
  3. Remove the rear panel.
  4. Remove the side panel R.
  5. Remove two screws from the main body.
  6. Remove the side panel L.
  7. Remove the front panel.
  8. Remove two screws from the head.
- Note : Do not scratch the housing, which also leads to the noise.**
9. Remove the housing B by loosening the hooks.
  10. Remove the module and the motor; remove the motor from its bottom.  
If the motor is removed from its top, the motor can be damaged.



## 4.2. Assembly Instructions

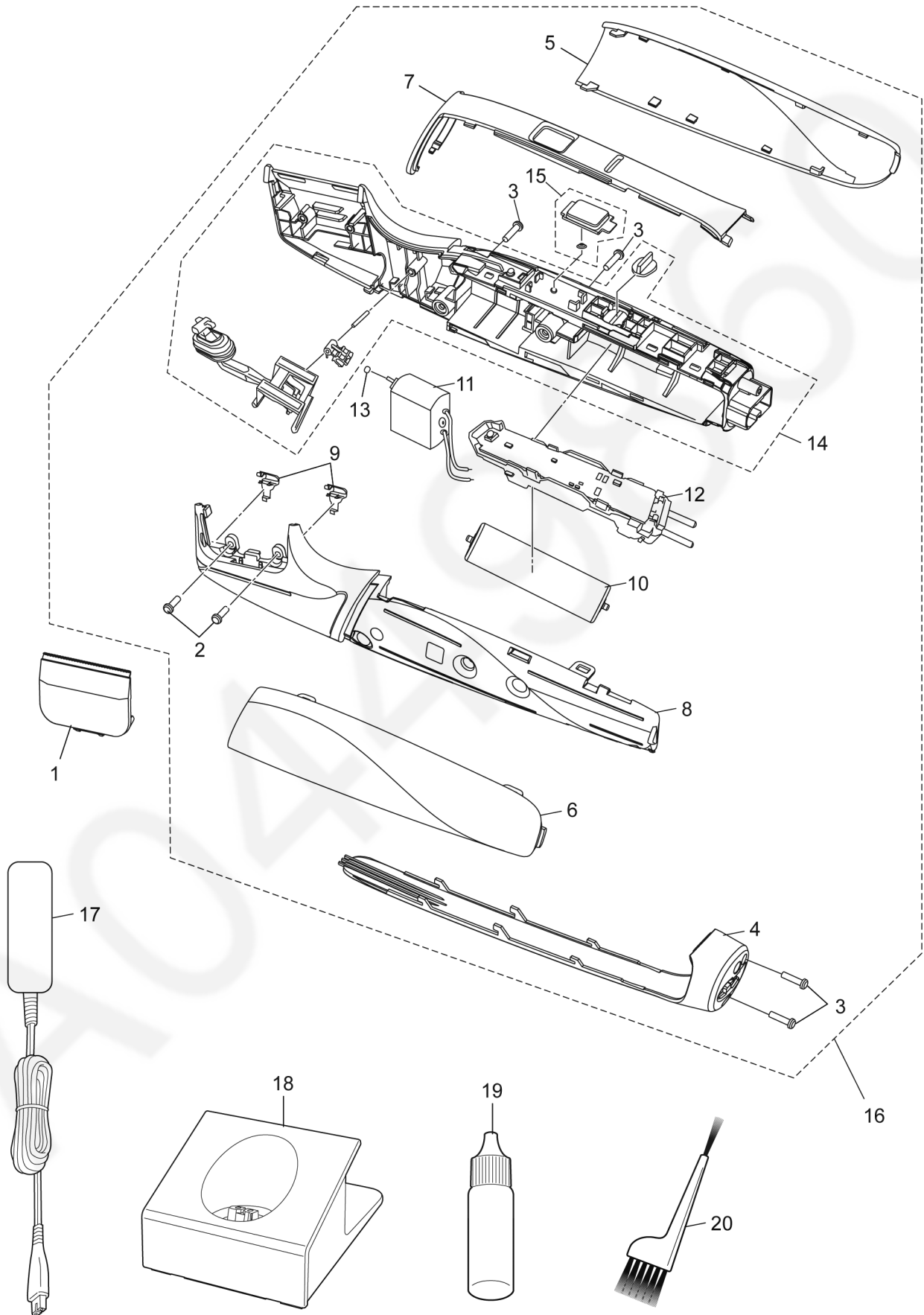
1. Apply the grease (G741S) on the pin of motor and cam roller.

Install the cam roller to the pin of motor, then the cam roller is fit into the hole of lever A properly.



# 5 Exploded View and Replacement Parts List

## 5.1. Exploded View for ER-RZ10



## 5.2. Replacement Parts List for ER-RZ10

Safety	Ref. No.	Part No.	Part Name & Description	Quantity	Remarks
	1	WER9340Y	BLADE BLOCK	1	
	2	WERRZ10L9108	SCREW	2	K2-6
	3	WER504L6007	SCREW	4	K2-8
	4	WERRZ10K3018	REAR PANEL	1	
	5	WERRZ10K3008	SIDE PANEL R	1	
	6	WERRZ10K3098	SIDE PANEL L	1	
	7	WERRZ10K3088	FRONT PANEL	1	
	8	WERRZ10K3078	HOUSING B	1	
	9	WERRZ10S1068	SPRING FOR CUTTER	2	
	10	WERGP21L2508	STORAGE BATTERY	1	NI-MH
	11	WERRZ10L1008	MOTOR	1	
	12	WERRZ10L0078	MODULE	1	
	13	WERRZ10L1578	CAM ROLLER	1	
	14	WERRZ10K3068	HOUSING ASSEMBLY	1	
	15	WERRZ10K3308	SWITCH BUTTON SET	1	
	16	WERRZ10K3038	BODY BLOCK	1	
	17	WERRZ10K7664	ADAPTOR	1	
	18	WERRZ10K7338	CHARGING STAND	1	C-2 TYPE
	19	WERGC20X7918	OIL	1	
	20	WER1510K7087	CLEANING BRUSH	1	
	-	WERRZ10K8008	INDIVIDUAL PACKAGE	1	
	-	WERRZ10K8028	PAD	1	
	-	WERRZ10K8108	OPERATING INSTRUCTIONS	1	