

# Service Manual

AC/Rechargeable Professional

Hair Clipper

Model No. **ER-GP80**

Europe




Please file and use this manual together with the service manual for Model No.ER160, Order No.SD0404E42C2.

### **WARNING**

This service information is designed for experienced repair technicians only and is not designed for use by the general public. It does not contain warnings or cautions to advise non-technical individuals of potential dangers in attempting to service a product. Products powered by electricity should be serviced or repaired only by experienced professional technicians. Any attempt to service or repair the product or products dealt with in this service information by anyone else could result in serious injury or death.

### **IMPORTANT SAFETY NOTICE**

There are special components used in this equipment which are important for safety. These parts are marked by  in the Schematic Diagrams, Circuit Board Diagrams, Exploded Views and Replacement Parts List. It is essential that these critical parts should be replaced with manufacturer's specified parts to prevent shock, fire or other hazards. Do not modify the original design without permission of manufacturer.

## TABLE OF CONTENTS

	PAGE	PAGE
1 Specifications .....	2	
2 EXPLODED VIEW & REPLACEMENT PARTS LIST ----	3	

# Panasonic

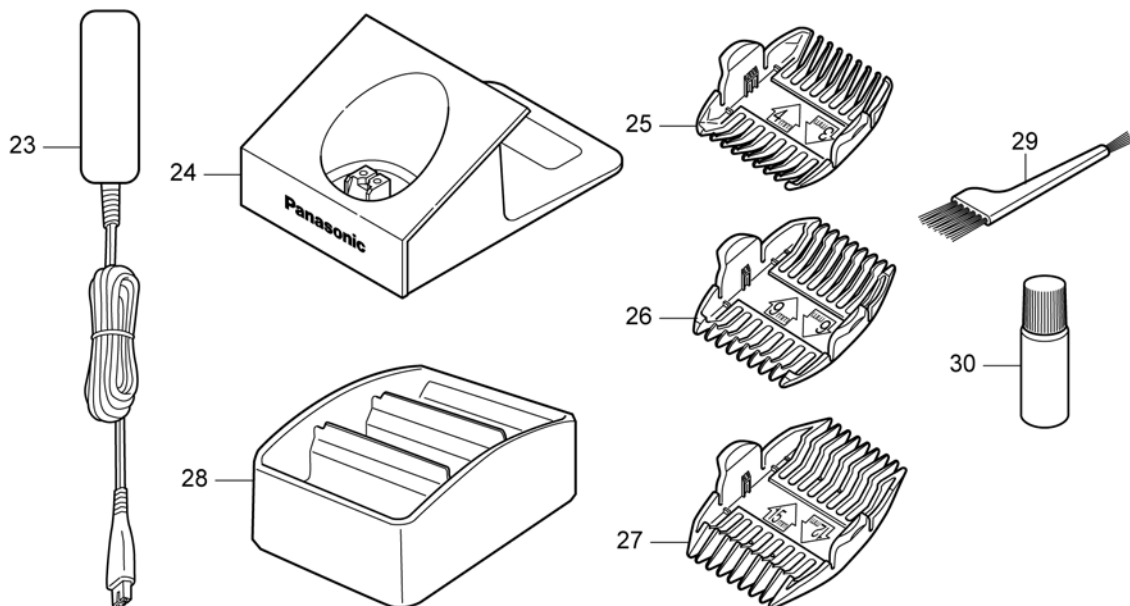
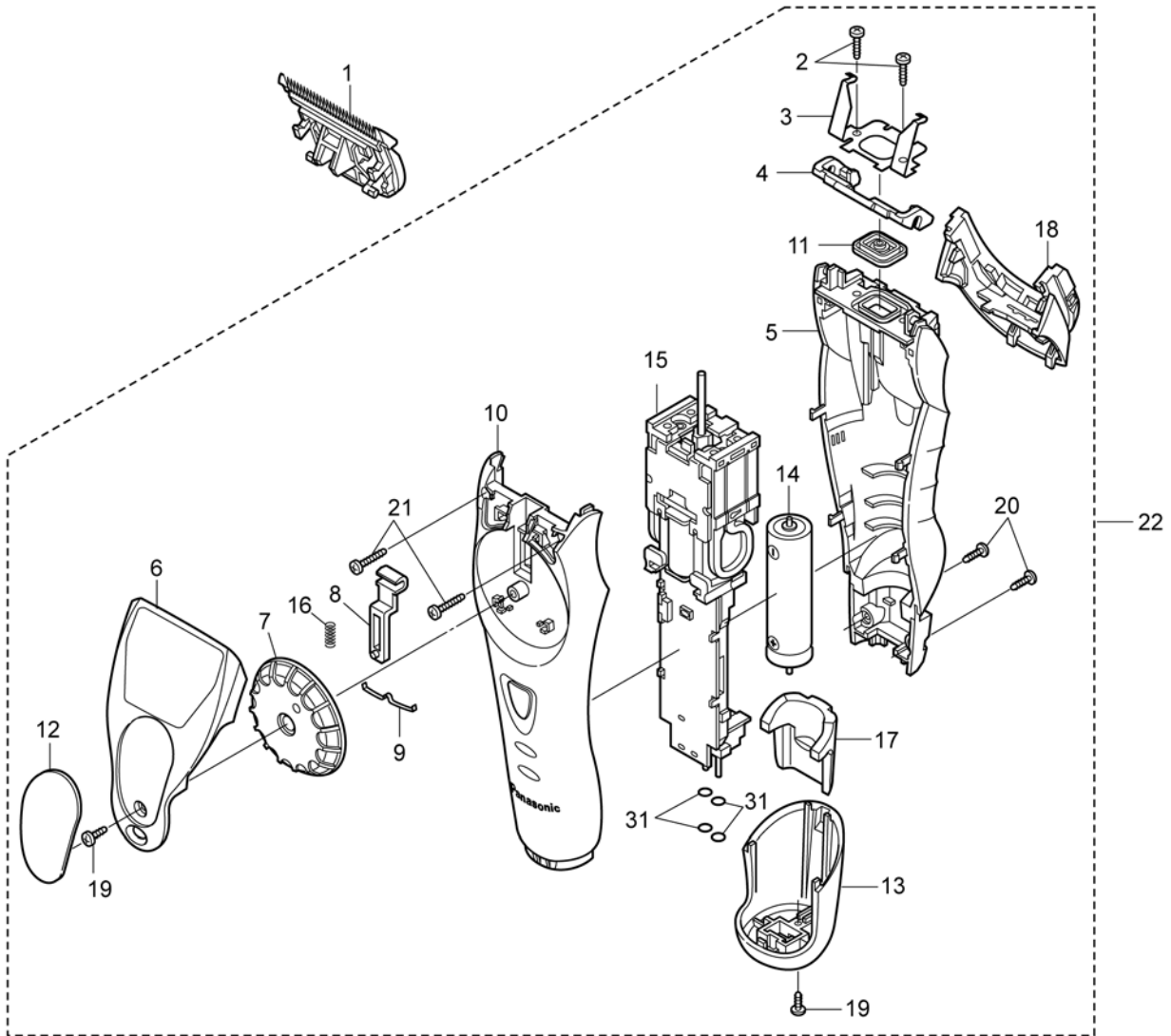
© Panasonic Corporation 2014 Unauthorized copying and distribution is a violation of law.

# 1 Specifications

Power source	AC 100-240V, 50-60Hz (Automatic voltage conversion)
Motor voltage	3.6 v
Charging time	Approx. 1 hour
Supplied accessories	3/4 mm comb attachment
	6/9 mm comb attachment
	12/15 mm comb attachment
	Charging stand
	Cleaning brush
	Oil

## 2 EXPLODED VIEW & REPLACEMENT PARTS LIST

### 2.1. EXPLODED VIEW



## 2.2. REPLACEMENT PARTS LIST

Safety	Ref. No.	Part No.	Part Name & Description	Quantity	Remarks
	1	WER9900Y	BLADE BLOCK	1	
	2	WER160L9006	SCREW	2	M2.5-8
	3	WER160L0167	BLADE SPRING	1	
	4	WERGP80L0208	LIFT BAR	1	
	5	WERGP80K3068	HOUSING B	1	
	6	WERGP80S1588	BLADE HOLDER A	1	
	7	WER1610K3288	DIAL	1	
	8	WER160L1557	CONNECTION BAR	1	
	9	WER160L0457	DIAL CLICK SPRING	1	
	10	WERGP80K3058	HOUSING A	1	
	11	WER160L0137	DUST-PROOF RUBBER	1	
	12	WER1610K0327	FINGER GRIP	1	
	13	WERGP80K3178	BOTTOM COVER	1	
	14	WESLV95L2508	RECHARGEABLE BATTERY	1	Li-ion TYPE
	15	WERGP80L1007	LINEAR MOTOR ASSEMBLY	1	
	16	WERGP80L0198	SPRING	1	
	17	WERGP80L3178	WEIGHT	1	
	18	WERGP80K3188	BLADE BASE	1	
	19	WER160L9106	SCREW	2	M2.0-6
	20	WER160L9206	P-TIGHT SCREW	4	M2.0-8
	21	WER160L9306	P-TIGHT SCREW	2	M2.0-12
	22	WERGP80K3038	BODY BLOCK	1	
	23	WERGP80K7664	CHARGING ADAPTOR	1	
	24	WERGP80K7118	CHARGING STAND	1	
	25	WER1610K7397	COMB ATTACHMENT 3-4MM	1	
	26	WER1610K7427	COMB ATTACHMENT 6-9MM	1	
	27	WER1610K7407	COMB ATTACHMENT 12-15MM	1	
	28	WER1510K7197	COMB ATTACHMENT SHELF	1	
	29	WER1510K7087	CLEANING BRUSH	1	
	30	WER203X7918	OIL	1	
	31	WERGP80K1608	O-RING	4	
	-	WERGP80K8008	INDIVIDUAL BOX	1	
	-	WERGP80K8108	OPERATING INSTRUCTIONS	1	