

# Service Manual

AC/Rechargeable Professional Hair Clipper

Model ER-GP30

EUROPE

CIS

AMERICA



Please file and use this manual together with the service manual for Model No. ER1410 ER1420, Order No. SD0802E37CE.

**⚠ WARNING**

This service information is designed for experienced repair technicians only and is not designed for use by the general public. It does not contain warnings or cautions to advise non-technical individuals of potential dangers in attempting to service a product. Products powered by electricity should be serviced or repaired only by experienced professional technicians. Any attempt to service or repair the product or products dealt with in this service information by anyone else could result in serious injury or death.

**IMPORTANT SAFETY NOTICE**

There are special components used in this equipment which are important for safety. These parts are marked by  $\Delta$  in the Schematic Diagrams, Circuit Board Diagrams, Exploded views and Replacement Parts List. It is essential that these critical parts should be replaced with manufacture's specified parts to prevent shock, fire or other hazards. Do not modify the original design without permission of manufacturer.

**TABLE OF CONTENTS**

	Page
1. WARNING.....	2
2. SPECIFICATIONS .....	2
3. EXPLODED VIEW & REPLACEMENT PARTS LIST .....	3



© Panasonic Corporation, 2016. All rights reserved. Unauthorized copying and distribution is a violation of law.

# 1. WARNING

**Caution:**

- Pb free solder has a higher melting point than standard solder; Typically the melting point is 50 - 70° F (30 - 40°C) higher. Please use a soldering iron with temperature control and adjust it to 750 ±20° F (400 ± 10°C). In case of using high temperature soldering iron, please be careful not to heat too long.
- Pb free solder will tend to splash when heated too high (about 1100° F / 600°C).

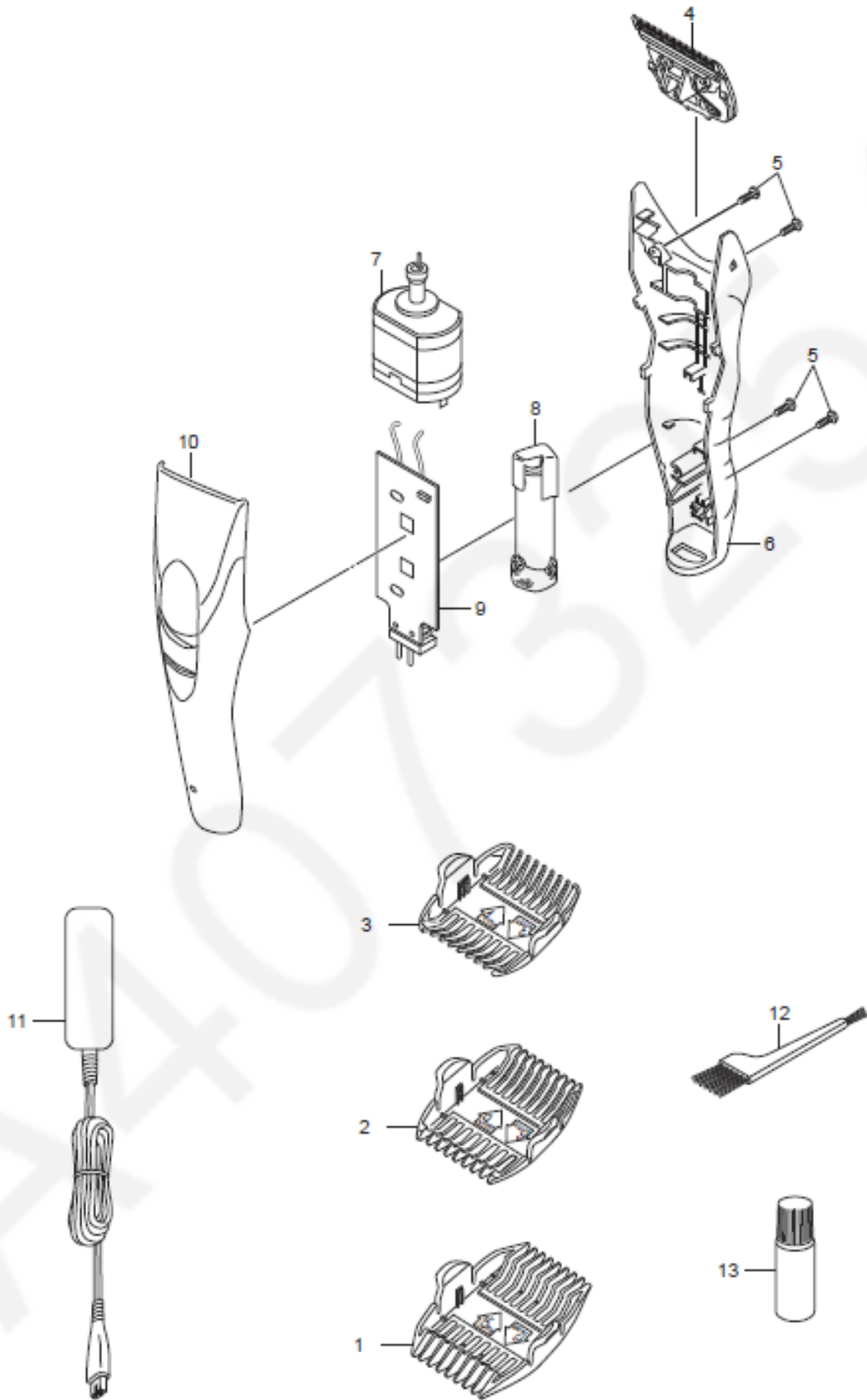
# 2. SPECIFICATIONS

Power source	100-240V AC, 50-60Hz
Motor Voltage	1.2V
Charging time	Approx. 8 hours
Weight (main unit)	Approx. 128 g (without attachment)

Supplied accessories	Comb attachment (3mm/6mm, 9mm/12mm, 15mm/18mm)
	Oil
	Cleaning brush

# 3 EXPLODED VIEW & REPLACEMENT PARTS LIST

## 3.1 EXPLODED VIEW ER-GP30



### 3.2 REPLACEMENT PARTS LIST

	Ref. No.	Part No.	Part Name & Description	Quantity	Remarks
	1	WER1410K7398	COMB ATTACHMENT	1	
	2	WER1410K7408	COMB ATTACHMENT	1	
	3	WER1410K7418	COMB ATTACHMENT	1	
	4	WER9701Y	BLADE BLOCK	1	EUROPE
	4	WER9701P	BLADE BLOCK	1	AMERICA
	5	WERGC33K9008	SCREW	4	K2-8
	6	WERGP30K3068	HOUSING B	1	EUROPE
	6	WERGP30K3061	HOUSING B	1	CIS
	6	WERGP30K3069	HOUSING B	1	AMERICA
	7	WERGC33L1008	MOTOR	1	
	8	WERGC33L2508	RECHARGEABLE BATTERY	1	NI-MH TYPE
	9	WERGP30L2108	MODULE ASSEMBLY	1	
	10	WERGP30K3058	HOUSING A	1	
	10	WERGP30K3059	HOUSING A	1	AMERICA
	11	WERGP30K7660	ADAPTOR	1	BF-3 PLUG
	11	WERGP30K7664	ADAPTOR	1	C-2 PLUG/EUROPE
	11	WERGP30K7661	ADAPTOR	1	C-2 PLUG/CIS
	11	WERGP30K7658	ADAPTOR	1	A-2 PLUG
	12	WER1510K7087	CLEANING BRUSH	1	
	13	WERGC20X7918	OIL	1	
		WERGP30K8008	INDIVIDUAL BOX	1	EUROPE
		WERGP30K8000	INDIVIDUAL BOX	1	ENGLAND
		WERGP30K8001	INDIVIDUAL BOX	1	CIS
		WERGP30K8009	INDIVIDUAL BOX	1	AMERICA
		WERGP30K8108	OPERATING INSTRUCTIONS	1	EUROPE
		WERGP30K8101	OPERATING INSTRUCTIONS	1	CIS
		WERGP30K8109	OPERATING INSTRUCTIONS	1	AMERICA