

# Service Manual

Rechargeable Beard/Hair Trimmer

Model No. **ER-GB40**



U.S.A.  
Canada/Latin America

## **⚠ WARNING**

This service information is designed for experienced repair technicians only and is not designed for use by the general public. It does not contain warnings or cautions to advise non-technical individuals of potential dangers in attempting to service a product. Products powered by electricity should be serviced or repaired only by experienced professional technicians. Any attempt to service or repair the product or products dealt with in this service information by anyone else could result in serious injury or death.

## **IMPORTANT SAFETY NOTICE**

There are special components used in this equipment which are important for safety. These parts are marked by **⚠** in the Schematic Diagrams, Circuit Board Diagrams, Exploded Views and Replacement Parts List. It is essential that these critical parts should be replaced with manufacturer's specified parts to prevent shock, fire or other hazards. Do not modify the original design without permission of manufacturer.

## **TABLE OF CONTENTS**

	PAGE	PAGE
<b>1 Warning</b> -----	<b>2</b>	
<b>2 Specifications</b> -----	<b>2</b>	
<b>3 Troubleshooting Guide</b> -----	<b>3</b>	
<b>4 Disassembly and Assembly Instructions</b> -----	<b>4</b>	
4.1. Disassembly Instructions-----	4	
4.2. Cautions in Assembly-----	5	
<b>5 Schematic Diagram</b> -----	<b>7</b>	
<b>6 Exploded View and Replacement Parts List</b> -----	<b>8</b>	
6.1. Exploded View-----	8	
6.2. Replacement Parts List-----	9	

# 1 Warning

**Caution:**

- Pb free solder has a higher melting point than standard solder; Typically the melting point is 50 - 70°F (30 - 40°) higher. Please use a soldering iron with temperature control and adjust it to 750 ± 20°F (400 ± 10°). In case of using high temperature soldering iron, please be careful not to heat too long.
- Pb free solder will tend to splash when heated too high (about 1100°F / 600°C).

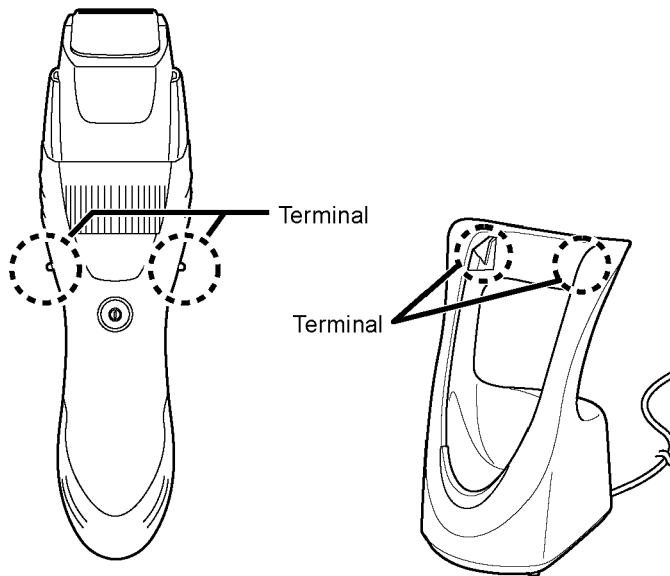
# 2 Specifications

Power source	AC 120V, 50Hz
Motor voltage	1.2 V
Charging time	Approx. 15 hours
Weight	150g

Supplied accessories	Comb attachment
	Cleaning brush
	Oil

### 3 Troubleshooting Guide

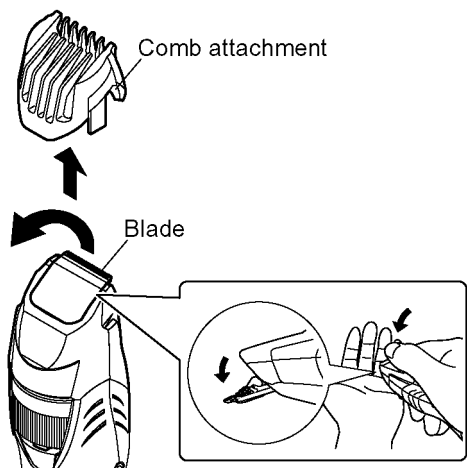
<TROUBLE>	<CHECK.>	<REMEDY>	
Motor does not rotate. Does not charge.	<p align="center">&lt;CHECK AC ADAPTOR.&gt;</p> Connect the rated voltage to the normal main unit by the AC adaptor. Check if the charge indicator lamp of AC adaptor is lit.	NO → Replace AC adaptor.	
↓ OK			
Charge the main unit with the AC adaptor from a customer for approximately 30 minutes. And check if the main unit operates or not.			NO → Replace AC adaptor.
↓ OK			
<p align="center">&lt;CHECK RECHARGEABLE BATTERY.&gt;</p> Okay if the voltage of rechargeable battery is more than approximately 1.2V DC between (+) and (-) terminals.			NO → Replace rechargeable battery.
↓ OK			
<p align="center">&lt;CHECK MOTOR.&gt;</p> Okay if motor rotates when DC1.2V is applied to (+) and (-) terminals.			NO → Replace motor.
↓ OK			
Replace module chassis assembly.			
↓ NO If it does not work properly;			
<p align="center">&lt;CHECK TERMINALS.&gt;</p> Check if there is any dirt or rust around the terminal of main unit and AC adaptor.			NO → Clean the terminals only with a soft close slightly dampened with tap water or tissue.



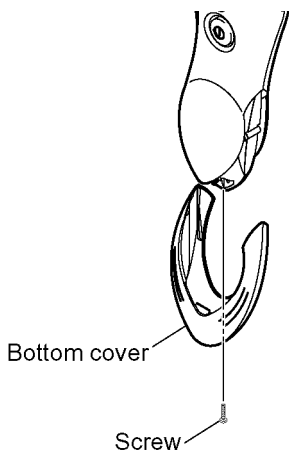
# 4 Disassembly and Assembly Instructions

## 4.1. Disassembly Instructions

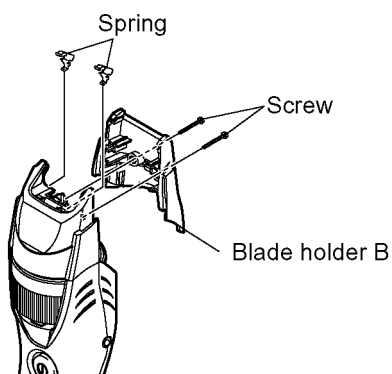
1. Remove the comb attachment.
2. Remove the blade.



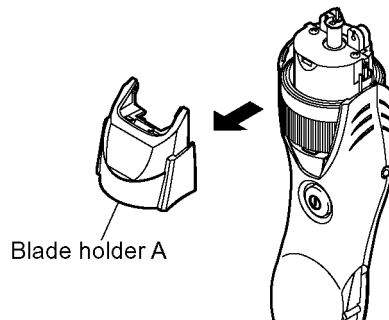
3. Remove one screw.
4. Remove the bottom cover.



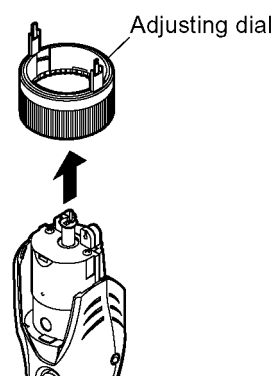
5. Remove two screws.
6. Remove the blade holder B and the spring for cutter.



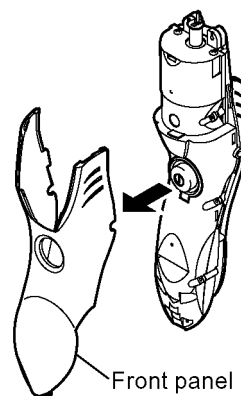
7. Remove the blade holder A.



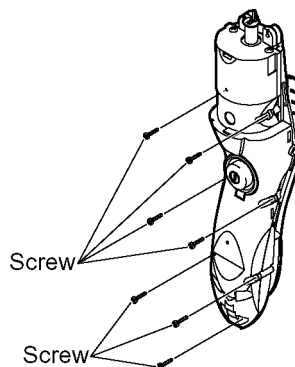
8. Remove the adjusting dial.



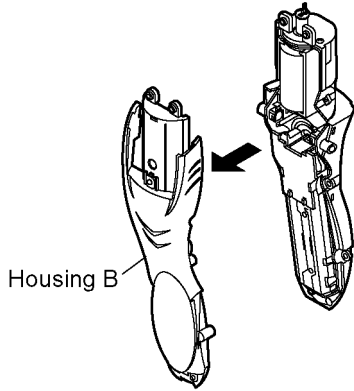
9. Remove the front panel.



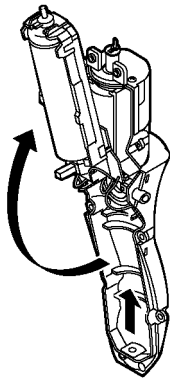
10. Remove the seven screws.



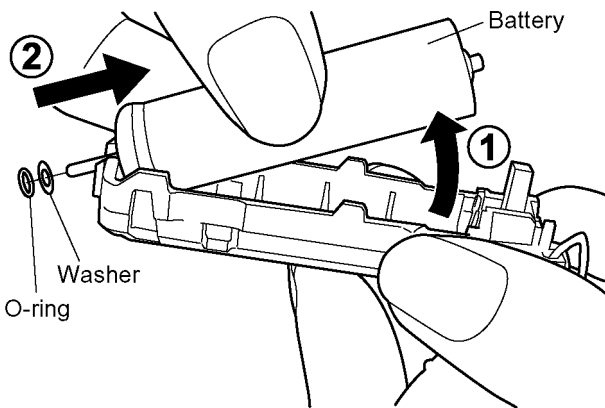
11. Remove the housing B.



12. Slide the chassis, and reversing the direction of the arrow.



13. Remove the battery o-ring and washer in battery. Take out the rechargeable battery from the chassis.



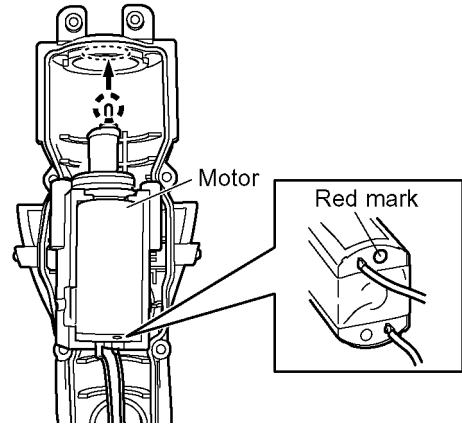
## 4.2. Cautions in Assembly

### NOTE:

When reassembling, replace the new waterproof rubber. Make sure whether there is NO foreign substance sticking around a part covered with water seal.

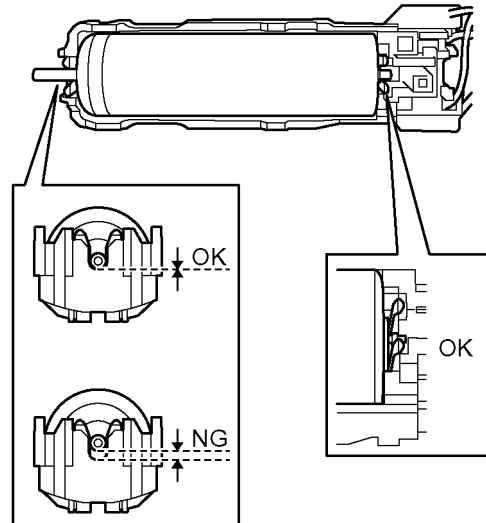
### 4.2.1. Motor

1. Place the red mark on upper side. Fit the shape of motor balancer and the hole of housing A and insert into housing A.



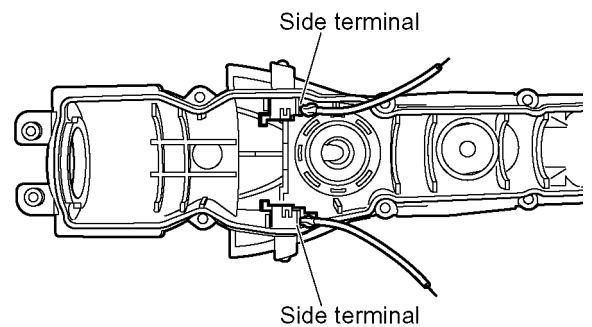
### 4.2.2. Rechargeable battery

1. Insert the rechargeable battery into chassis. Attach the battery o-ring and washer to the battery.



### 4.2.3. Side terminal

1. Insert the side terminals on both sides.



#### 4.2.4. Module chassis assembly

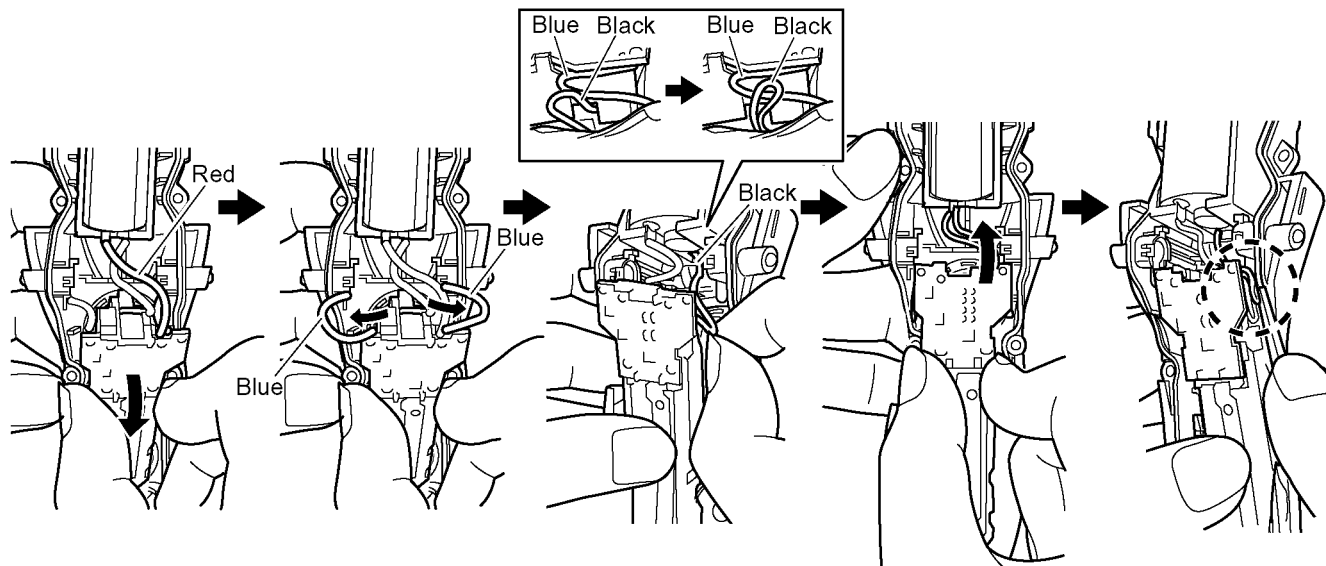
Confirm the correct wiring.

1. Place RED lead wire.
2. Move BLUE lead wires aside.
3. Place BLACK lead wire in right position.

Place module chassis assembly in the housing.

**NOTE:**

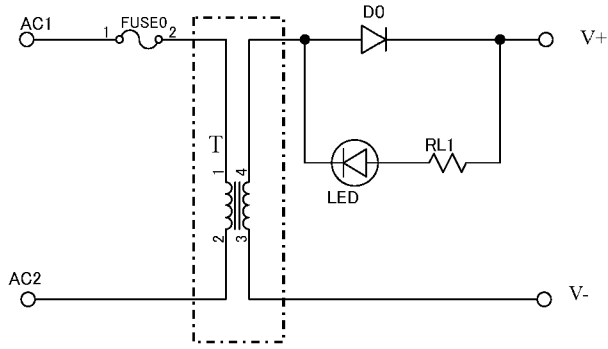
Press fit the lead wire neatly to avoid any pinching especially for the both side.



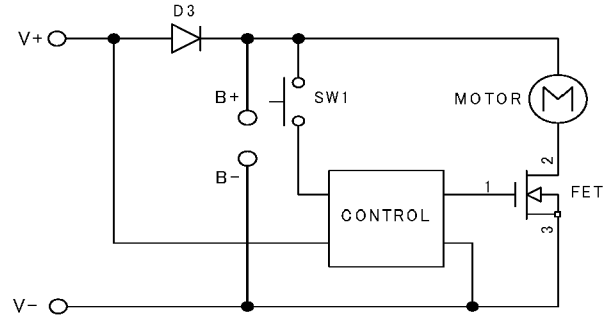
#### 4.2.5. Screw

1. Tighten screws with 1.47+-4.9N cm to prevent the breakage of housing or making a crevice in the housing.

# 5 Schematic Diagram



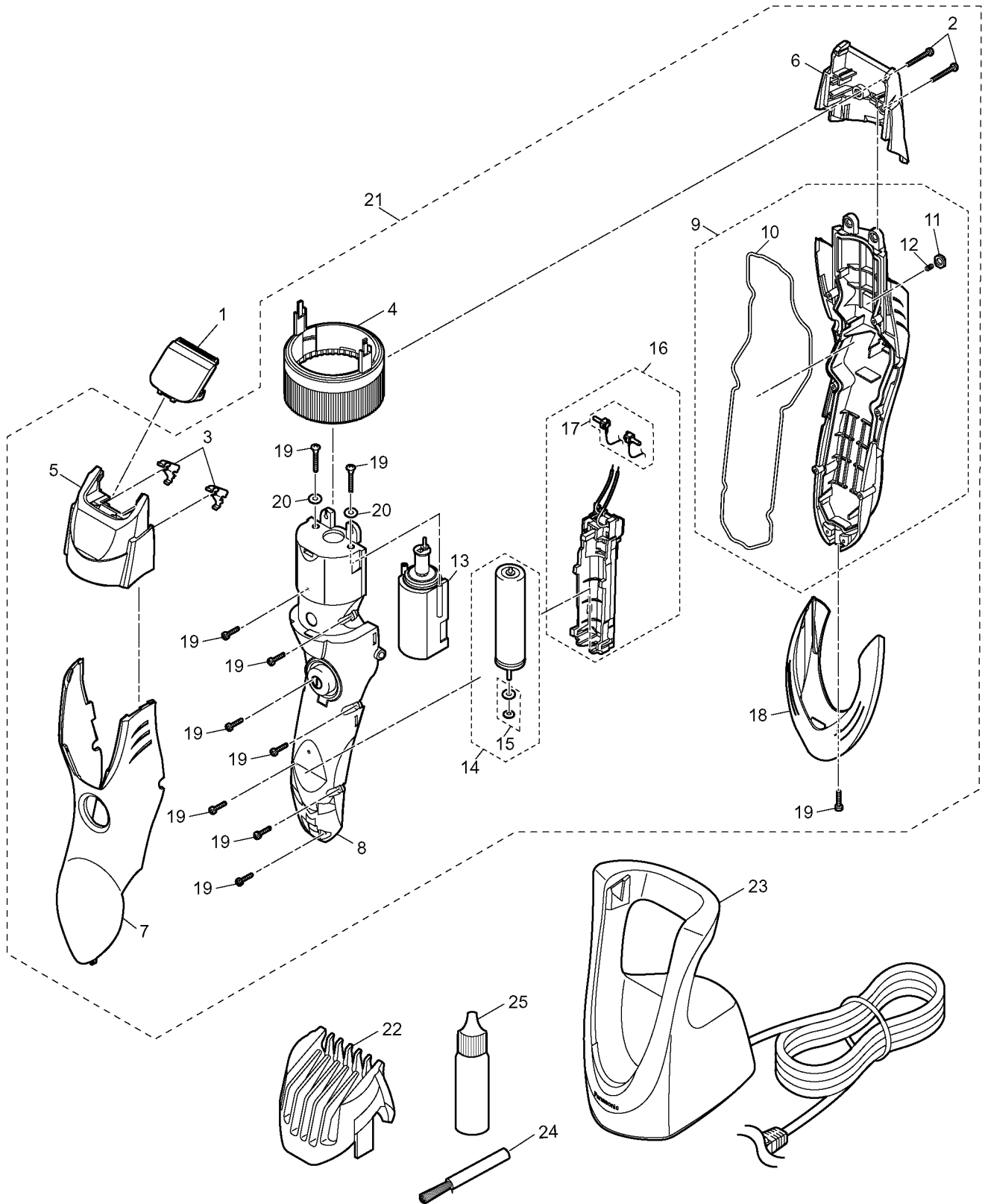
**Adaptor**



**Main unit**

# 6 Exploded View and Replacement Parts List

## 6.1. Exploded View





## 6.2. Replacement Parts List

Safety	Ref. No.	Part No.	Part Name & Description	Quantity	Remarks
	1	WER9606P	BLADE BLOCK	1	
	2	WES7025L9707	SCREW	2	
	3	WER504L0166	SPRING FOR CUTTER	2	(2PCS/PK)
	4	WERGB40S3288	ADJUSTING DIAL	1	
	5	WERGB40S1588	BLADE HOLDER A	1	
	6	WERGB40S1598	BLADE HOLDER B	1	
	7	WERGB40A3968	FRONT PANEL	1	
	8	WERGB40S3058	HOUSING A	1	
	9	WERGB40S3062	HOUSING B	1	
	10	WERGB40L0588	HOUSING O-RING	1	
	11	WERGB40L0458	CLICK BUTTON	1	
	12	WERGB40L0178	SPRING A	1	
	13	WERGB40L1008	MOTOR ASSEMBLY	1	
	14	WESSL41L2508	RECHARGEABLE BATTERY	1	Ni-MH TYPE
	15	WESRW30L0977	WASHER & O-RING SET	1ST	
	16	WESSL41L2108	MODULE CHASSIS ASSEMBLY	1	
	17	WESSL41L2158	SIDE TERMINAL	1ST	
	18	WERGB40S3178	BOTTOM COVER	1	
	19	WES8176L6056	TAPPING SCREW	9	K2-8
	20	WER217L0967	O-RING B	2	(6PCS/PK)
	21	WERGB40S3032	BODY BLOCK	1	
	22	WERGB40S7398	COMB ATTACHMENT	1	1mm (1/32INCH) to 10mm (13/32INCH)
	23	WESSL41K7658	AC ADAPTOR	1	A-2 PLUG
	24	WERGB30H7048	CLEANING BRUSH	1	
	25	WERC20X7918	OIL	1	
	-	WERGB40S8002	INDIVIDUAL BOX	1	only for U.S.A.
	-	WERGB40S8003	INDIVIDUAL BOX	1	
	-	WERGB40S8101	OPERATING INSTRUCTIONS	1	