

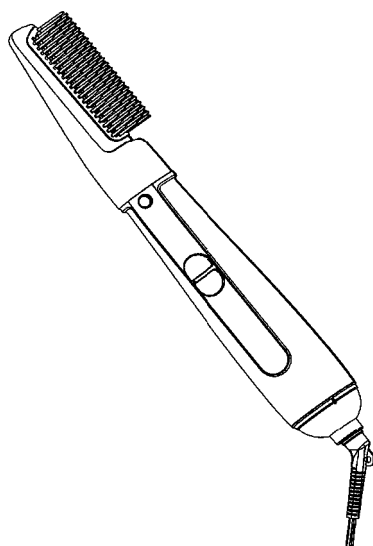
# Service Manual

(Household) Hair Styler

Model No. **EH-KE16**

Model No. **EH-KE46**


Asia



## **WARNING**

This service information is designed for experienced repair technicians only and is not designed for use by the general public. It does not contain warnings or cautions to advise non-technical individuals of potential dangers in attempting to service a product. Products powered by electricity should be serviced or repaired only by experienced professional technicians. Any attempt to service or repair the product or products dealt with in this service information by anyone else could result in serious injury or death.

## **IMPORTANT SAFETY NOTICE**

There are special components used in this equipment which are important for safety. These parts are marked by  in the Schematic Diagrams, Circuit Board Diagrams, Exploded Views and Replacement Parts List. It is essential that these critical parts should be replaced with manufacturer's specified parts to prevent shock, fire or other hazards. Do not modify the original design without permission of manufacturer.

## TABLE OF CONTENTS

	PAGE	PAGE
1 Warning-----	2	
2 Specifications -----	2	
3 Troubleshooting Guide -----	3	
4 Disassembly and Assembly Instructions -----	4	
5 Wiring Connection Diagram -----	8	
6 Schematic Diagram-----	9	
7 Exploded View and Replacement Parts List -----	10	

# Panasonic

© Panasonic Corporation, 2014.  
Unauthorized copying and distribution is a violation of law.

# 1 Warning

## Caution:

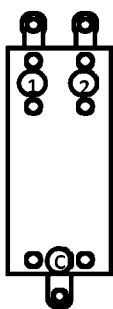
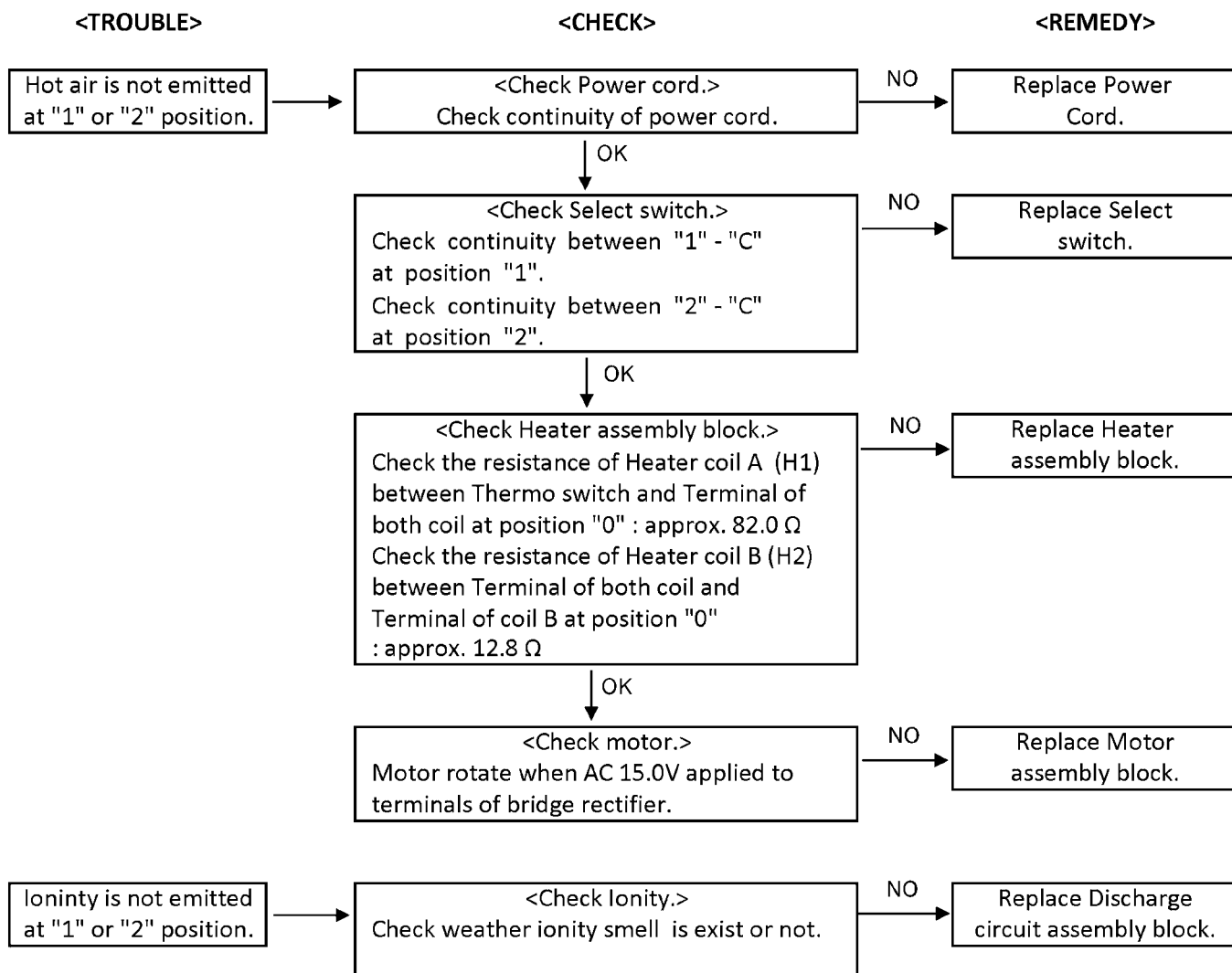
- Pb free solder has a higher melting point than standard solder; Typically the melting point is 50 - 70°F (30 - 40°C) higher. Please use a soldering iron with temperature control and adjust it to 750 ± 20°F (400 ± 10°C). In case of using high temperature soldering iron, please be careful not to heat too long.
- Pb free solder will tend to splash when heated too high (about 1100°F / 600°C).

# 2 Specifications

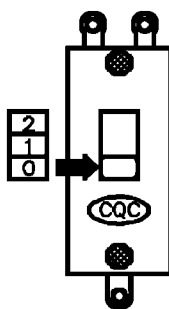
Model No.		EH-KE16/46					
Suffix		685	655	L	615	665	695
Country		Singapore Hong Kong UAE	Malaysia	Thailand	Iran Oman	Saudi Arabia	Kuwait Qatar
PowersSource		AC 220~240V 50-60Hz				220V~50Hz	240V~50Hz
Power consumption		220V 550W 230V 600W 240V 650W				550W	650W
Power cord length		1.7 m					
Plug		S3 Plug (Sunfai)		B2 Plug (Thai)	B2 Plug	S3 Plug (Sunfai)	
Attachment	EH-KE16	Blow Brush					
	EH-KE46	Blow Brush / Big Roll / Slim Roll / Nozzle					

# 3 Troubleshooting Guide

(Refer to SCHEMATIC DIAGRAM)



Back side



Front side

Select switch.

## 4 Disassembly and Assembly Instructions

### 4.1. Disassembly Instructions

1. Remove the two Torx screws from the Escutcheon, then remove Escutcheon, the Filter and the Fixing ring as show in figure 1.

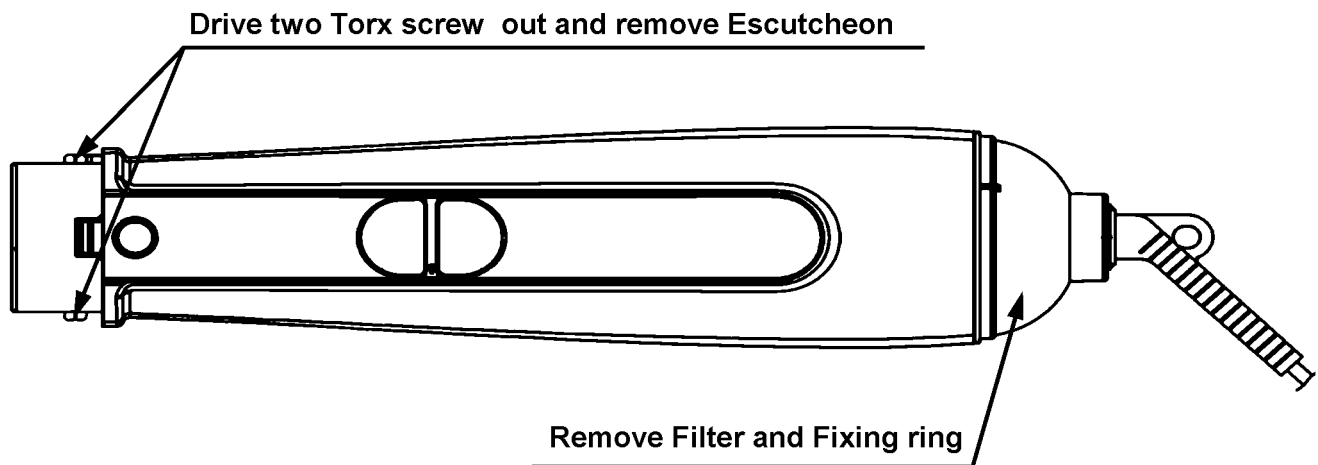


Figure 1

2. Seperate the Housing A and B by unfastening Housing B at indicated area show in figure 2.

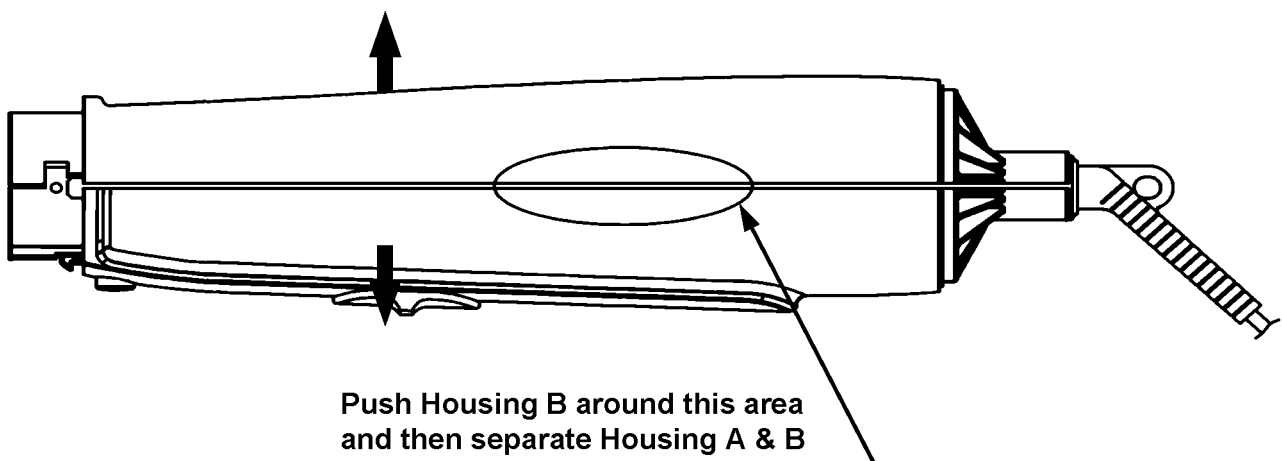


Figure 2

## 4.2. Assembly Instructions

1. Assembly Discharge circuit assembly block, Motor assembly block and Select switch to Heater assembly block by soldering Lead wire connect to the positions which are show in figure 3.  
(Refer all connecting position at page 8 "Wiring connection Diagram").

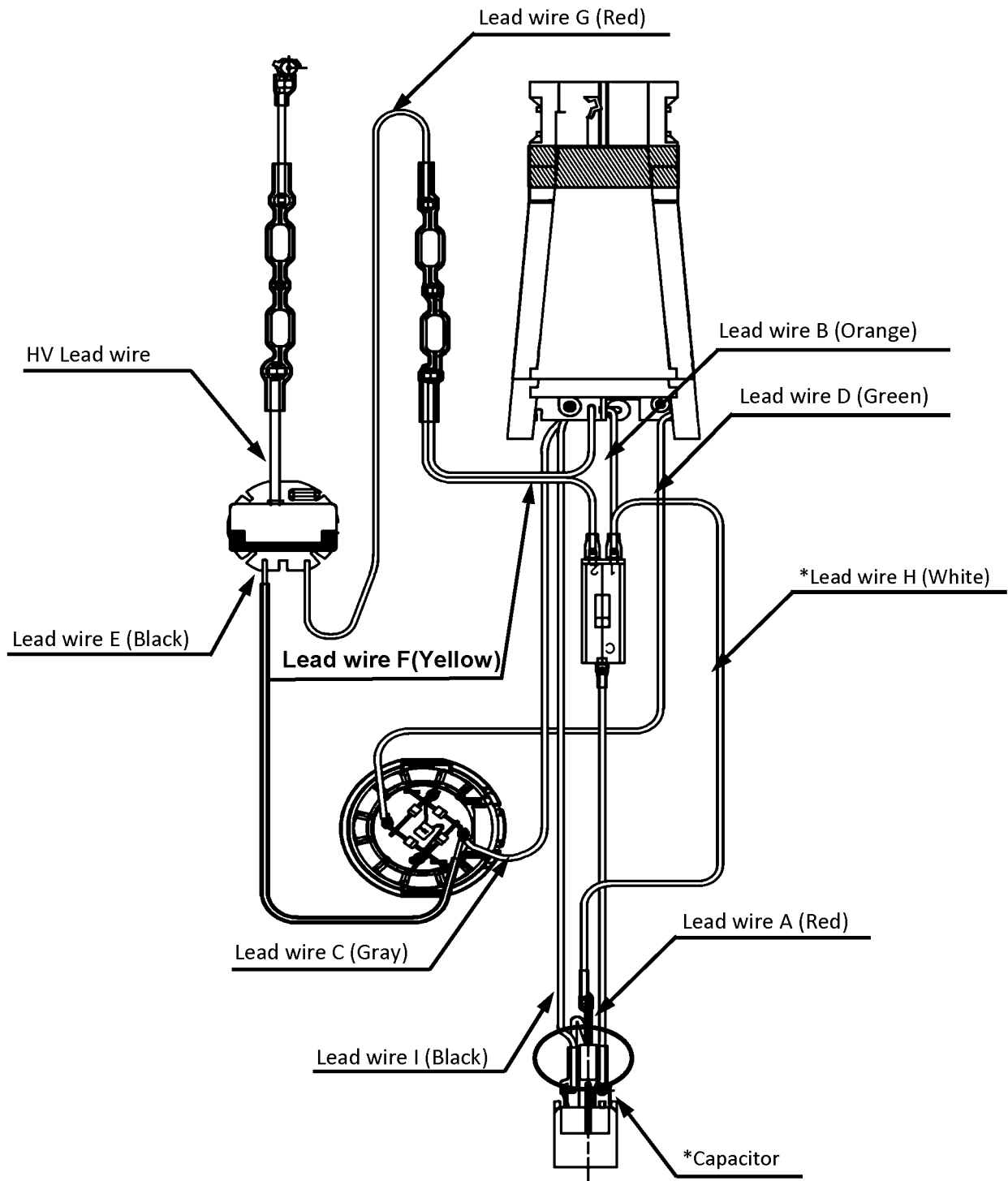


Figure 3

\*Capacitor and Lead wire H (white) don't be used in country code L and 615.

2. Assembly Select switch to motor assembly block and insert Lead wires into slot of PCB case and slot of Air flow regulator as show in figure 4.

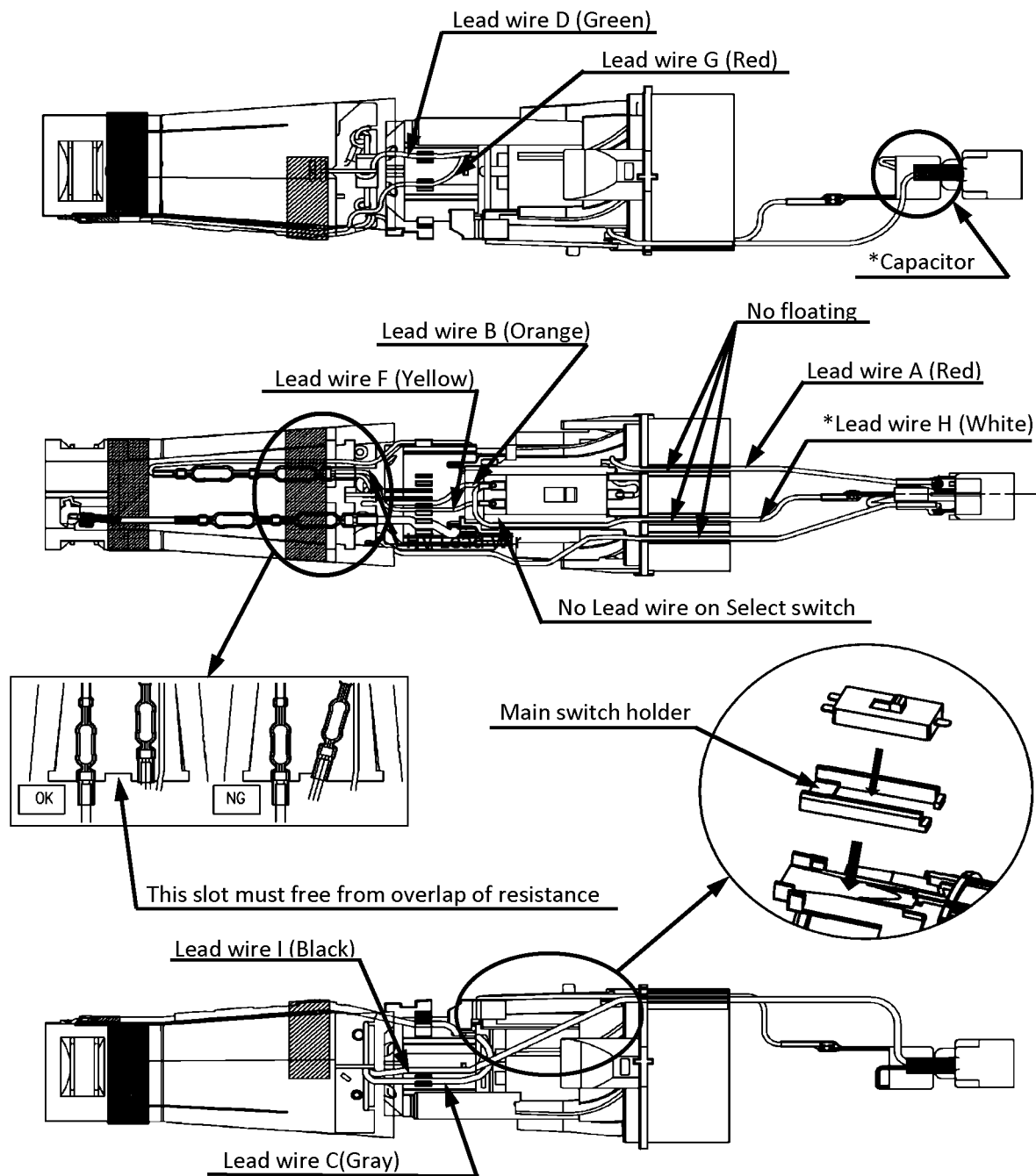


Figure 4

\*Capacitor and Lead wire H (white) don't be used in country code L and 615.

3. Assembly parts into Housing B step by step as show in figure 5.

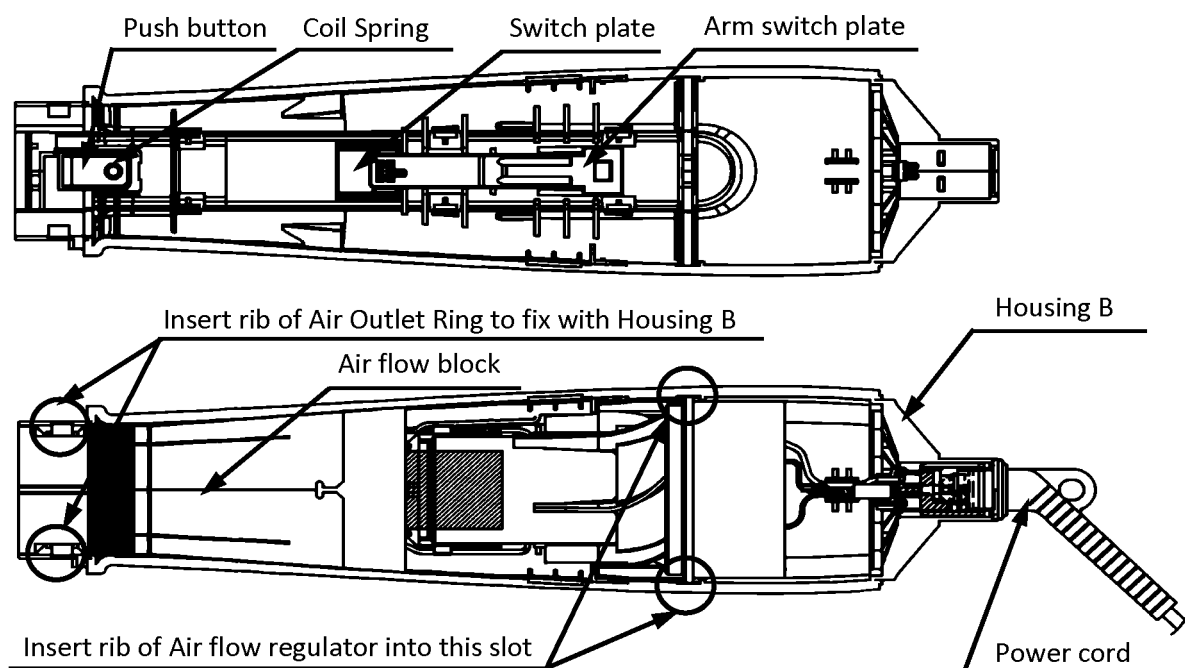


Figure 5

4. Assembly Housing A&B together, assembly Fixing ring, Filter, Escutcheon to housing A&B and in the end tighten two Torx screws as show in figure 6.

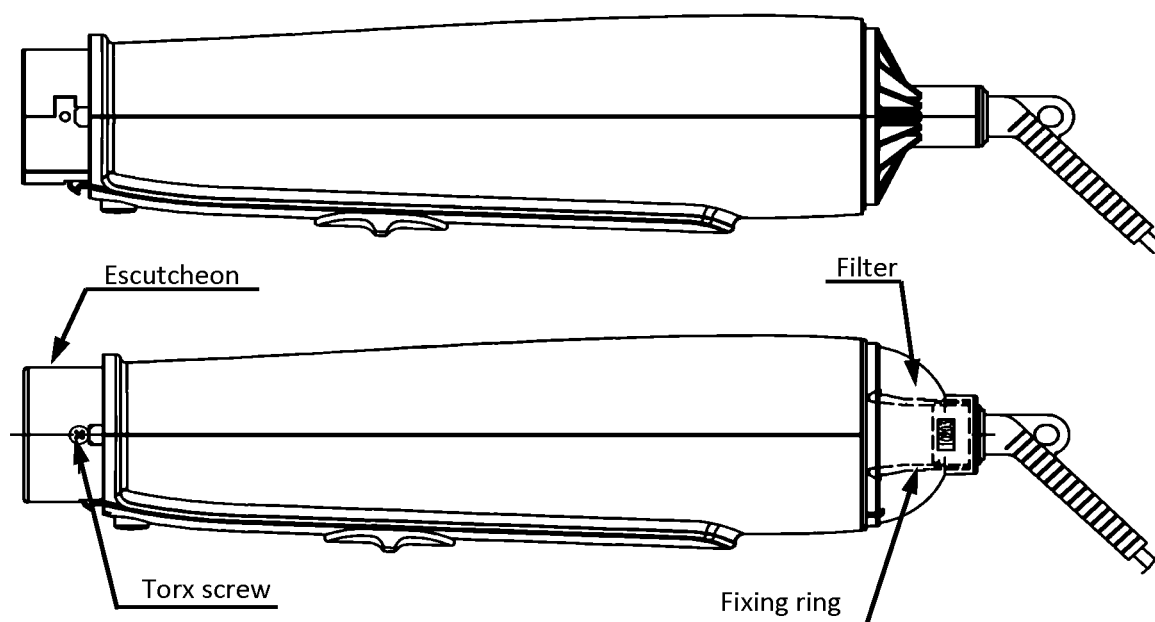
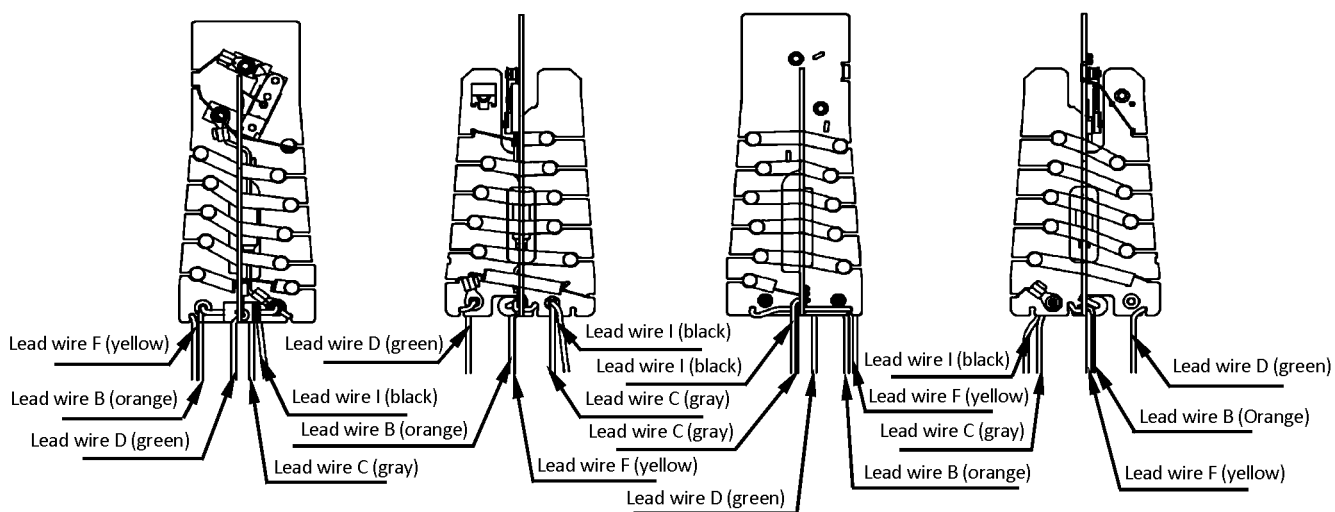
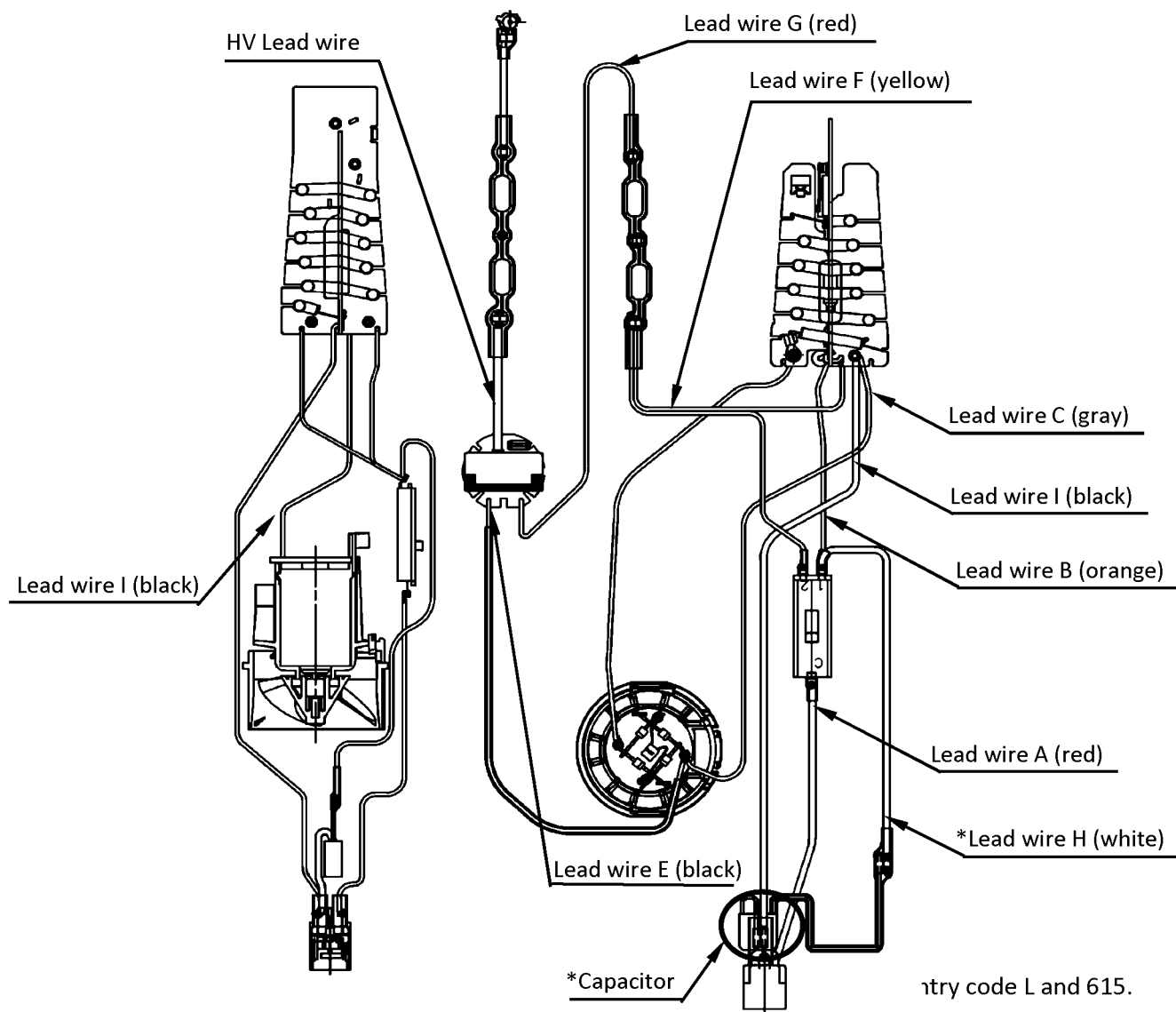


Figure 6

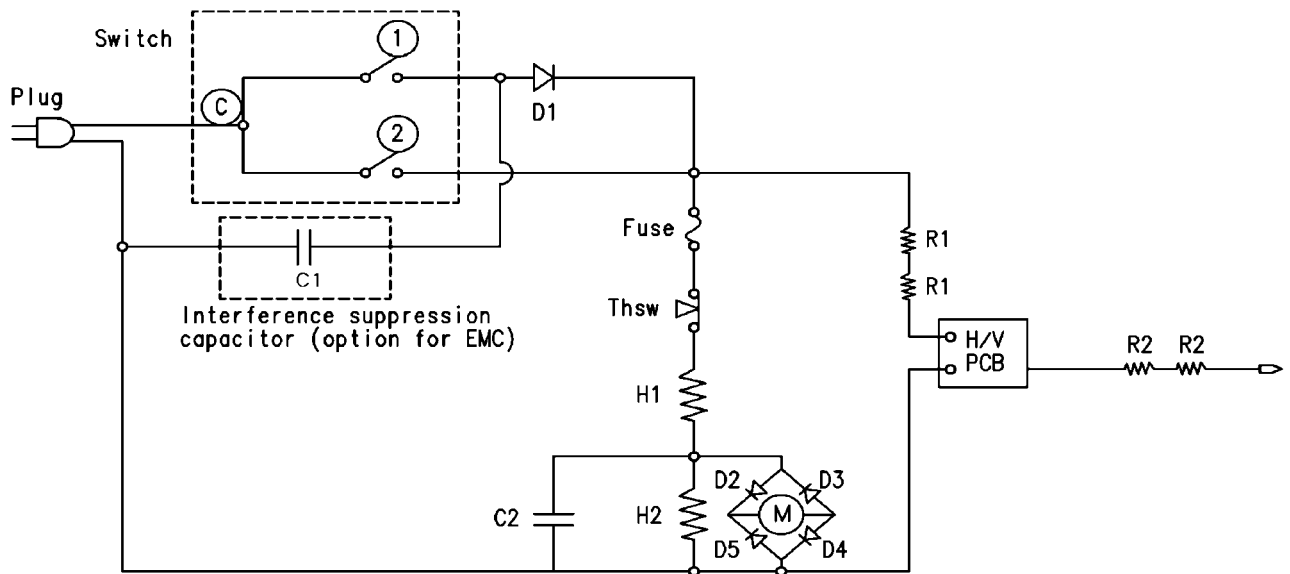
## 5 Wiring Connection Diagram



**\*Capacitor and Lead wire H (white) don't be used in country code L and 615.**

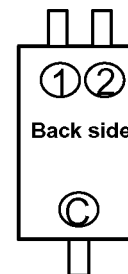


## 6 Schematic Diagram



Function Mode	Ⓒ ~ ①	Ⓒ ~ ②
Off (0)	X	X
Set (1)	O	O
Dry (2)	O	O

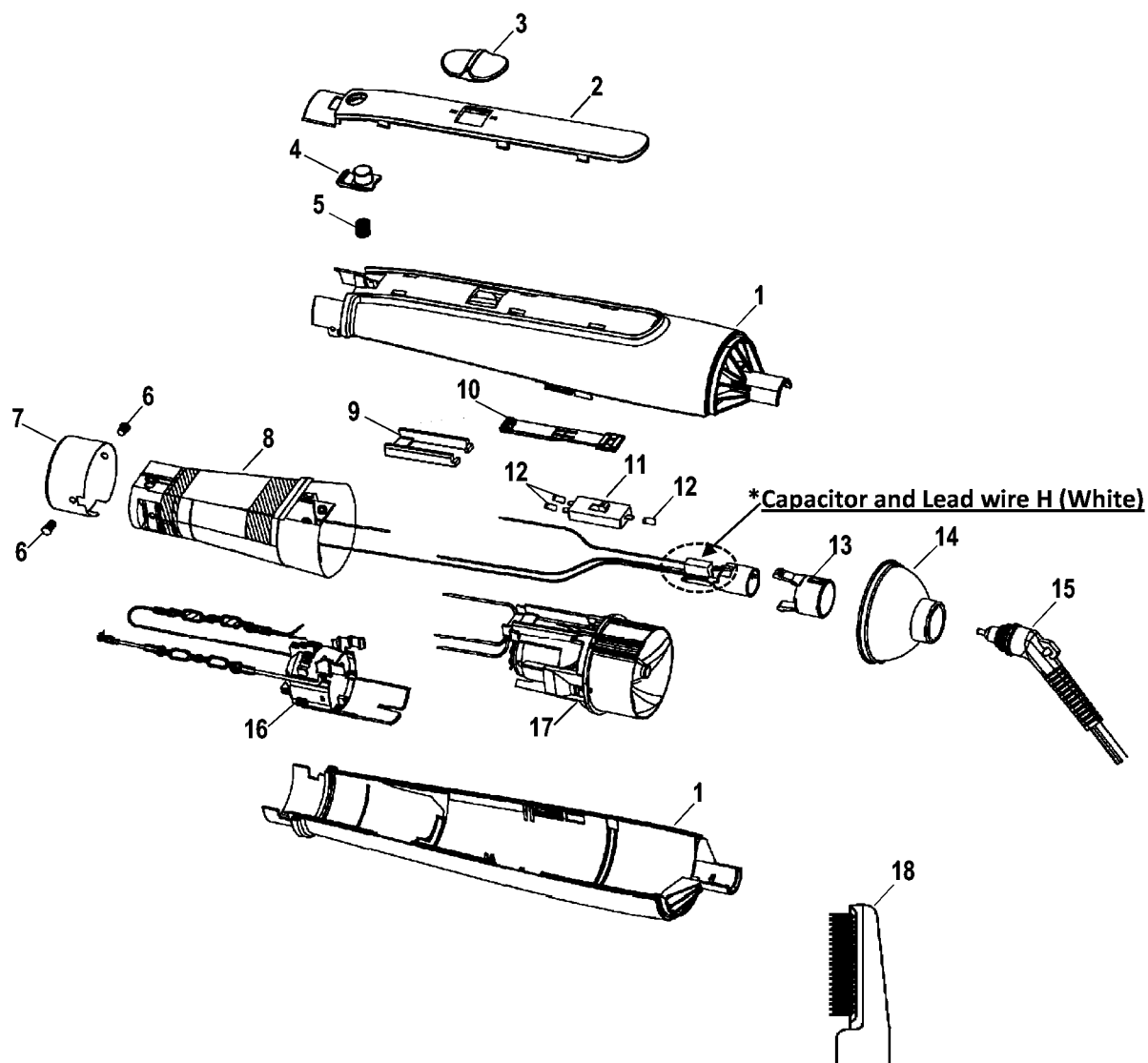
O = On  
X = Off



Symbol	PART NAME	SPECIFICATION	Q'ty	REMARK
H1	Resistance wire A	82.0±3% Ω/m	1	
H2	Resistance wire B	12.8±0.6 Ω/m	1	
C1	Interference suppression capacitor	275VAC,0.1μF	1	Not use in code L and 615
C2	Capacitor across motor	50VDC,0.33μF	1	
M	Motor	15VDC,340mA	1	
Thsw	Thermal Cut-Out	130±5°C	1	
Fuse	Thermal Fuse	10A 250V 205°C	1	
Switch	Main switch	11A 125VAC / 5.5A 250 VAC	1	
D1	Diode	1000VAC 7A	1	
D2-D5	Rectifier Diode	600VAC 1A	1	
Plug	Power cord		1	
R1	Fix resistance (H/V Dropping)	19 Ω 1W	2	
R2	Fix resistance (H/V Protecting)	1 MΩ 1/2W	2	
H/V PCB	High voltage circuit PCB		1	

## 7 Exploded View and Replacement Parts List

### 7.1. Exploded View for : EH-KE16



\*Capacitor and Lead wire H (White) don't be used in country code L and 615.

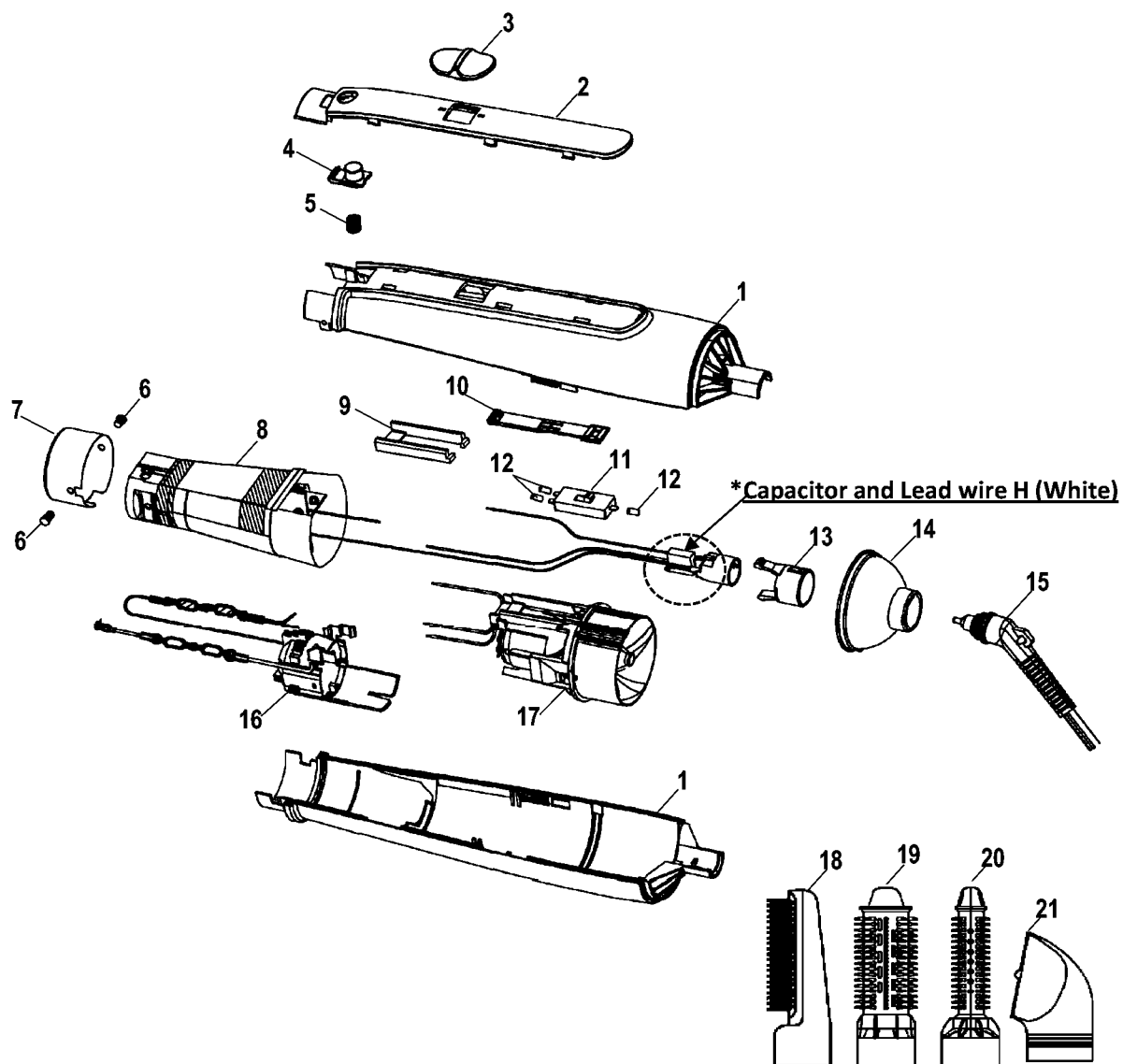
All parts are supplied from PMFTH-AP through PLAP

## 7.2. Parts List for EH-KE16

Safety	Ref. No.	Part No.	Part Name & Description	Quantity	Remarks
	1	EHKE16HSWW	HOUSING AB (WHITE)	1	(For others countries)
	1	EHKE16HS69WW	HOUSING AB (WHITE)	1	(For EH-KE16VP695 : Kuwait/Qatar)
	2	EHKE16PNPW	PANEL (PINK)	1	
	3	EHKE16MSPPW	MAIN SWITCH PLATE (VIVID PINK)	1	
	4	EHKE16PBPW	PUSH BUTTON (PINK)	1	
	5	EHKE16CSW	COIL SPRING	1	
	6	EHKE16T2604W	TORX SCREW 2.6*4	2	*1
	7	EHKE16ESW	ESCUTCHEON	1	
	8	EHKE16HB2W	HEATER ASSEMBLY BLOCK	1	(For EH-KE16VP615 : Iran/Oman, Include 3 Insulation Tubes)
	8	EHKE16HBW	HEATER ASSEMBLY BLOCK	1	(For others countries, Include 3 Insulation Tubes)
	9	EHKE16MSHW	MAIN SWITCH HOLDER	1	
	10	EHKE16ASPW	ARM SWITCH PLATE	1	
	11	EHKE16SSW	SELECT SWITCH	1	
	12	EHKE16ITBW	INSULATION TUBE (SET)	3	(3 pcs./pack)
	13	EHKE16FRHW	FIXING RING (GRAY)	1	
	14	EHKE16FTHW	FILTER (LIGHT GRAY)	1	
	15	EHKE16PCB2HW	POWER CORD (L/GRAY)	1	(B2-Plug)
	15	EHKE16PCS3HW	POWER CORD (L/GRAY)	1	(S3-Plug)
	16	EHKE16DCAW	DISCHARGE CIRCUIT ASS'Y BLOCK	1	
	17	EHKE16MBW	MOTOR WITH RECTIFIER BLOCK	1	
	18	EHKE16BAWW	BLOW BRUSH ASS'Y (WHITE)	1	
	-	EHKE16S03W	OPERATING INSTRUCTIONS	1	
	-	EHKE16615VPW	INDIVIDUAL PACKAGE	1	(For EH-KE16VP615 : Iran/Oman)
	-	EHKE16655VPW	INDIVIDUAL PACKAGE	1	(FOR EH-KE16VP655 : Malaysia)
	-	EHKE16665VPW	INDIVIDUAL PACKAGE	1	(FOR EH-KE16VP665 : Saudi Arabia)
	-	EHKE16685VPW	INDIVIDUAL PACKAGE	1	(FOR EH-KE16VP685 : Singapore, Hong Kong, UAE)
	-	EHKE16695VPW	INDIVIDUAL PACKAGE	1	(FOR EH-KE16VP695 : Kuwait/Qatar)
	-	EHKE16S09W	FILLER FOR PACKAGE	1	

Remarks : \*1 Individual Available

### 7.3. Exploded View for : EH-KE46



\*Capacitor and Lead wire H (White) don't be used in country code L and 615.

All parts are supplied from PMFTH-AP through PLAP

## 7.4. Parts List for EH-KE46

Safety	Ref. No.	Part No.	Part Name & Description	Quantity	Remarks
	1	EHKE46HSWW	HOUSING AB (WHITE)	1	(For others countries)
	1	EHKE46HS69WW	HOUSING AB (WHITE)	1	(For EH-KE46VP695 : Kuwait/Qatar)
	2	EHKE46PNPW	PANEL (PINK)	1	
	3	EHKE46MSPPW	MAIN SWITCH PLATE (VIVID PINK)	1	
	4	EHKE46PBPW	PUSH BUTTON (PINK)	1	
	5	EHKE46CSW	COIL SPRING	1	
	6	EHKE46T2604W	TORX SCREW 2.6*4	2	*1
	7	EHKE46ESW	ESCUTCHEON	1	
	8	EHKE46HB2W	HEATER ASSEMBLY BLOCK	1	(For EH-KE46VP615 : Iran/Oman, Include 3 Insulation Tubes)
	8	EHKE46HBW	HEATER ASSEMBLY BLOCK	1	(For others countries, Include 3 Insulation Tubes)
	9	EHKE46MSHW	MAIN SWITCH HOLDER	1	
	10	EHKE46ASPW	ARM SWITCH PLATE	1	
	11	EHKE46SSW	SELECT SWITCH	1	
	12	EHKE46ITBW	INSULATION TUBE (SET)	3	(3 pcs./pack)
	13	EHKE46FRHW	FIXING RING (GRAY)	1	
	14	EHKE46FTHW	FILTER (LIGHT GRAY)	1	
	15	EHKE46PCB2HW	POWER CORD (L/GRAY)	1	(B2-Plug)
	15	EHKE46PCS3HW	POWER CORD (L/GRAY)	1	(S3-Plug)
	16	EHKE46DCAW	DISCHARGE CIRCUIT ASS'Y BLOCK	1	
	17	EHKE46MBW	MOTOR WITH RECTIFIER BLOCK	1	
	18	EHKE46BAWW	BLOW BRUSH ASS'Y (WHITE)	1	
	19	EHKE46BRAWW	ROLLER BRUSH (WHITE)	1	
	20	EHKE46SRAWW	SLIM ROLLER BRUSH (WHITE)	1	
	21	EHKE46NZWW	NOZZLE (WHITE)	1	
	-	EHKE46S03W	OPERATING INSTRUCTIONS	1	
	-	EHKE46615VPW	INDIVIDUAL PACKAGE	1	(For EH-KE46VP615 : Iran/Oman)
	-	EHKE46655VPW	INDIVIDUAL PACKAGE	1	(FOR EH-KE46VP655 : Malaysia)
	-	EHKE46665VPW	INDIVIDUAL PACKAGE	1	(FOR EH-KE46VP665 : Saudi Arabia)
	-	EHKE46685VPW	INDIVIDUAL PACKAGE	1	(FOR EH-KE46VP685 : Singapore, Hong Kong, UAE)
	-	EHKE46695VPW	INDIVIDUAL PACKAGE	1	(FOR EH-KE46VP695 : Kuwait/Qatar)
	-	EHKE46S09W	FILLER FOR PACKAGE	1	

Remarks : \*1 Individual Available