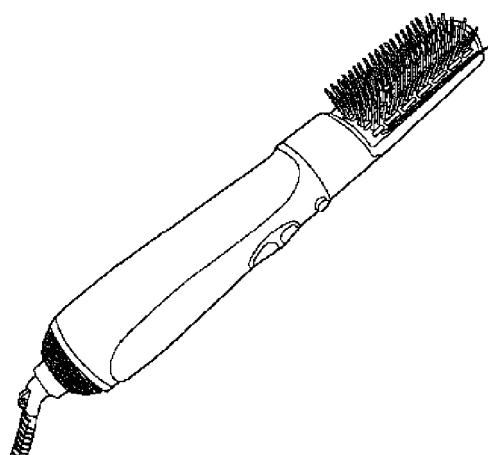


# Service Manual

**Hair Styler**

**Model No. EH-KA42  
EH-KA22**

Asia



## **⚠ WARNING**

This service information is designed for experienced repair technicians only and is not designed for use by the general public. It does not contain warnings or cautions to advise non-technical individuals of potential dangers in attempting to service a product. Products powered by electricity should be serviced or repaired only by experienced professional technicians. Any attempt to service or repair the product or products dealt with in this service information by anyone else could result in serious injury or death.

## **IMPORTANT SAFETY NOTICE**

There are special components used in this equipment which are important for safety. These parts are marked by ⚠ in the Schematic Diagrams, Circuit Board Diagrams, Exploded Views and Replacement Parts List. It is essential that these critical parts should be replaced with manufacturer's specified parts to prevent shock, fire or other hazards. Do not modify the original design without permission of manufacturer.

## **TABLE OF CONTENTS**

	PAGE	PAGE
1 Specifications .....	2	
2 Troubleshooting Guide .....	3	
3 Disassembly and Assembly Instructions .....	4	
4 Wiring Connection Diagram .....	9	
5 Schematic Diagram .....	10	
6 Exploded View and Replacement Parts List .....	11	

# Panasonic

© Panasonic Electric Works (Thailand) Co., Ltd.  
2011. All rights reserved. Unauthorized copying and  
distribution is a violation of law.

# 1 Warning

## Caution:

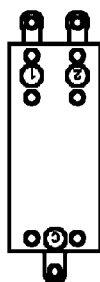
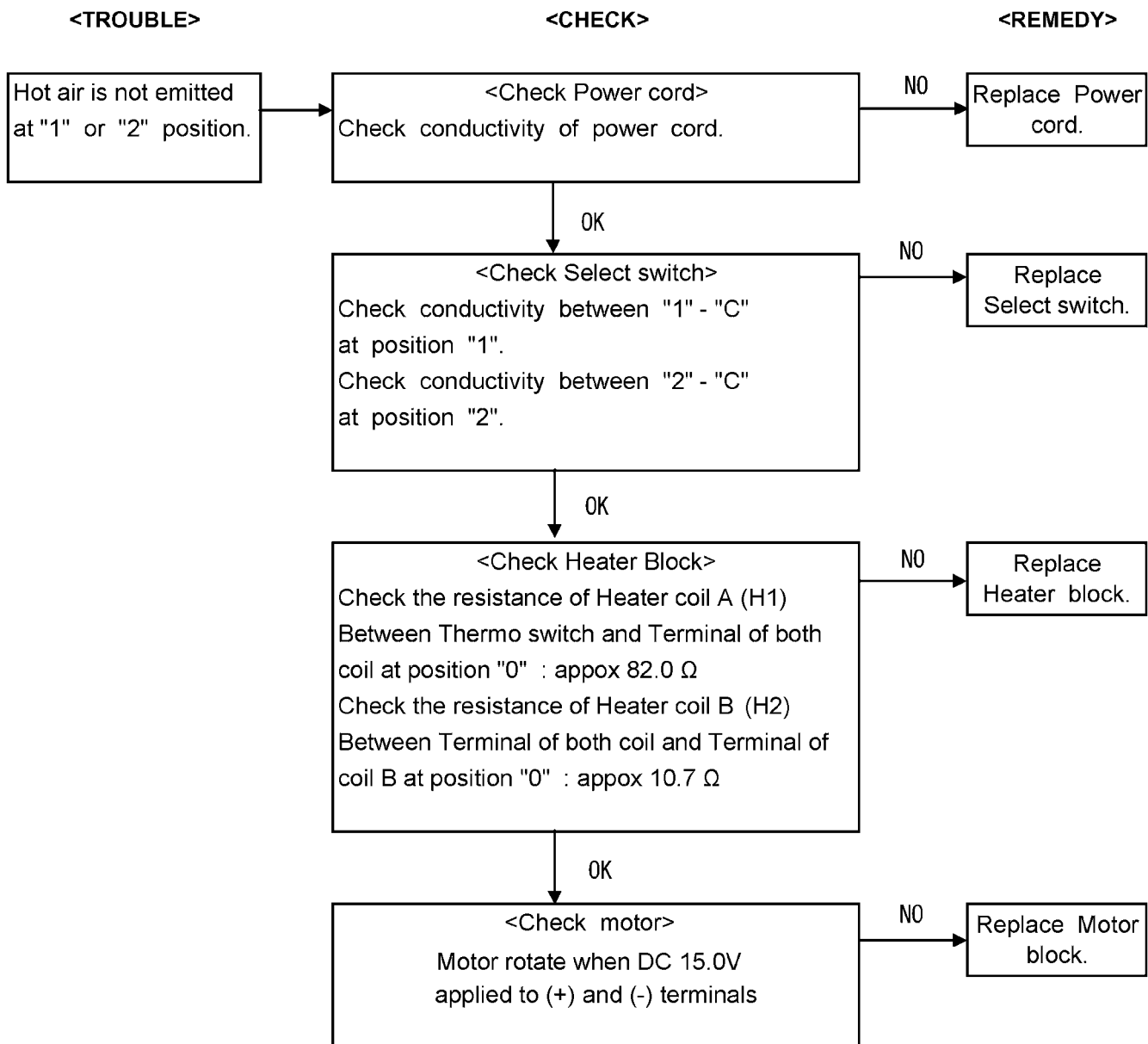
- Pb free solder has a higher melting point than standard solder; Typically the melting point is 50 - 70°F (30 - 40°C) higher. Please use a soldering iron with temperature control and adjust it to 750 ± 20°F (400 ± 10°C). In case of using high temperature soldering iron, please be careful not to heat too long.
- Pb free solder will tend to splash when heated too high (about 1100°F / 600°C).

# 2 Specifications

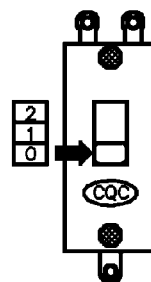
Sale Area or Country		India (615)	Vietnam (645)
Number of Model		EH-KA42 /EH-KA22	
Power source		AC 220-240V / 50-60Hz	
Power consumption	240V	650W	
	230V	600W	
	220V	550W	
Air volume with attachment		0.43 m <sup>3</sup> /min	
Air flow temperature (in case of room temperature 30°C)		120°C	
Cord length	B2 Plug	1.7 m	
Weight		320g	
Accessory	EH-KA42	Roller Brush, Nozzle, Blow Brush, Slim Roller Brush	
	EH-KA22	Roller Brush, Nozzle	

# 3 Troubleshooting Guide

Refer to WIRING CONNECTION DIAGRAM.



Back side



Front side

Select switch.

## 4 Disassembly and Assembly Instructions

### 4.1. Disassembly instructions

1. Remove the two Torx screws from the Escutcheon, then remove Escutcheon, the Filter and the Fixing ring as show in figure 1.

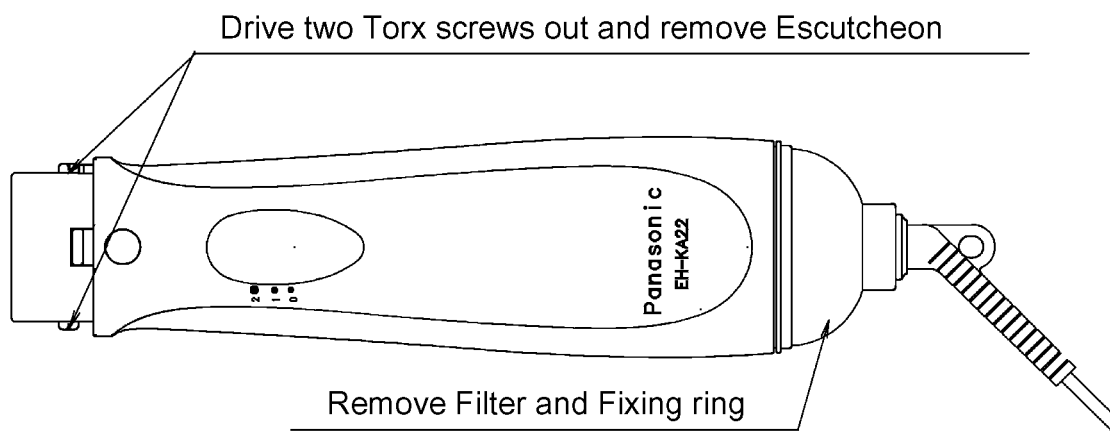


Figure 1

2. Separate the Housing A and B by unfastening Housing B at indicated area show in figure 2.

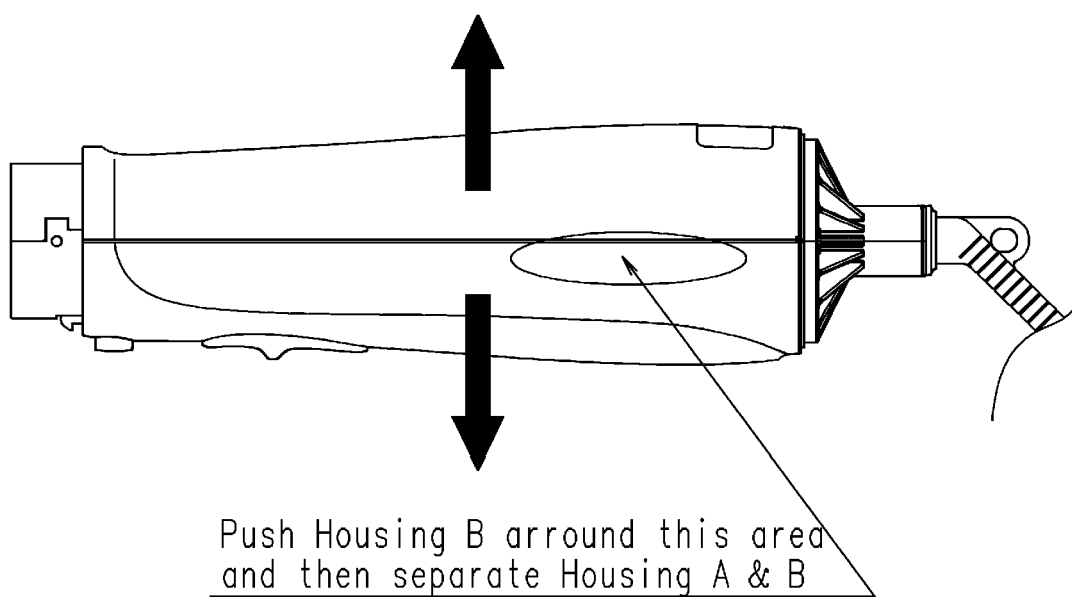


Figure 2

## 4.2. Assembly instructions

1. Assembly Select switch to Heater block by soldering Lead wires connect to the positions which are show in figure 3.

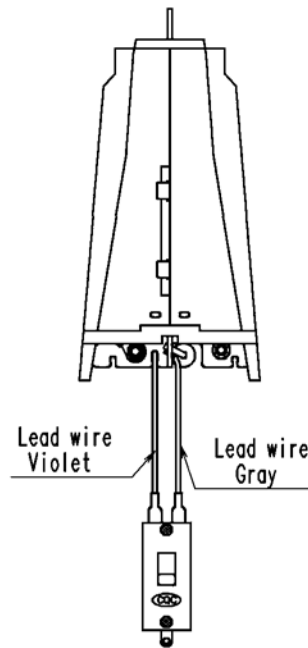


Figure 3

2. Assembly Connector cover block to Heater block by soldering Lead wries connect to the positions which are shown in Figure 4.

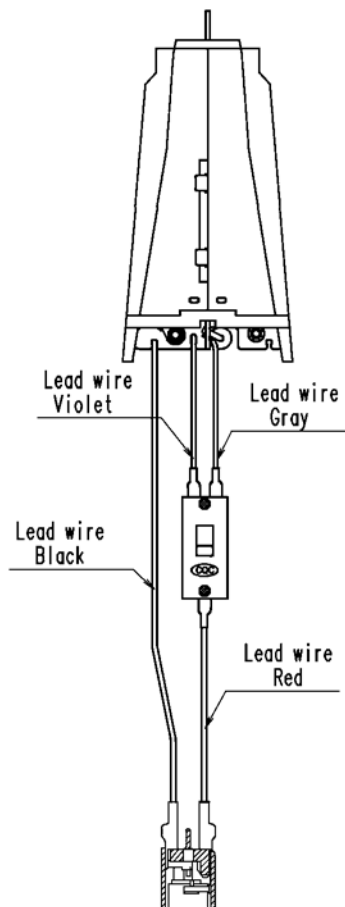
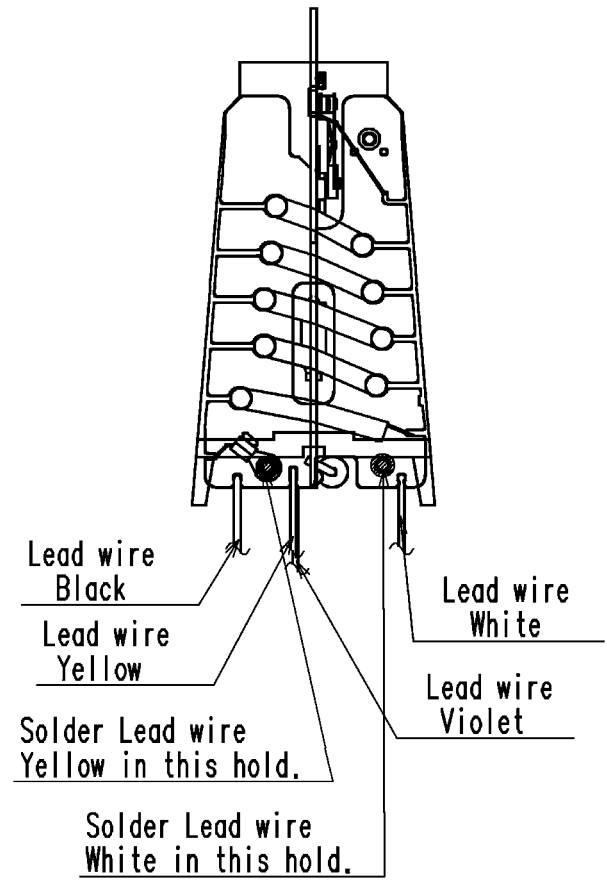
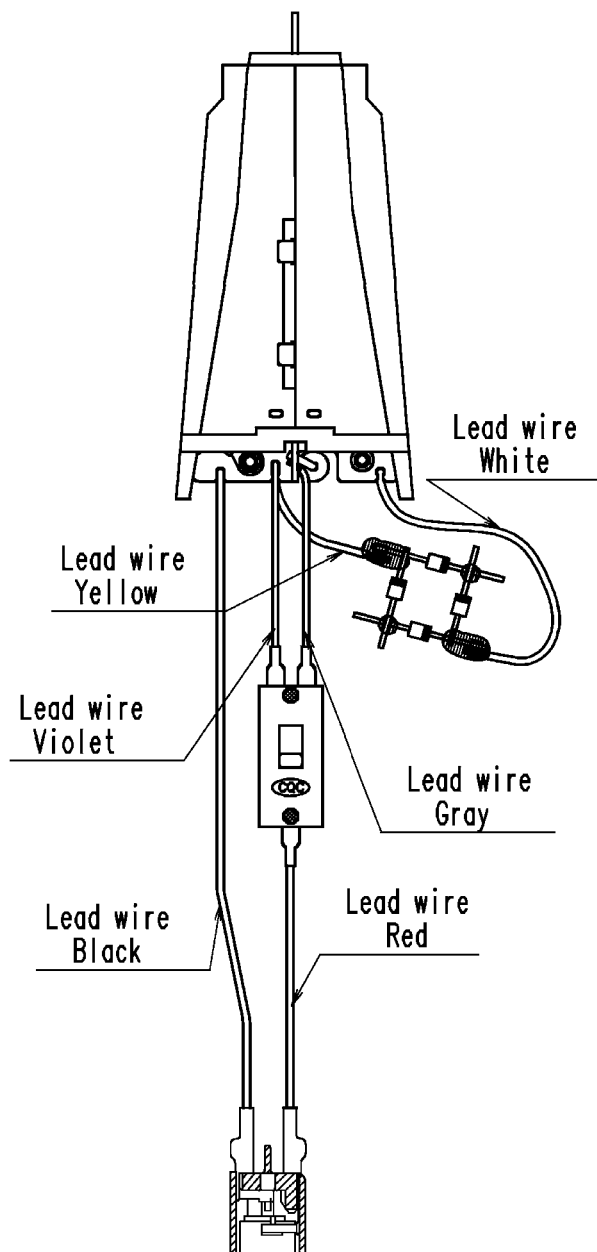


Figure 4

3. Assembly Rectifier ass'y block to Heater block by soldering Lead wires connect to the positions which are show in figure 5.



4. Insert Heater base board C to Motor ass'y block and assembly Diode bridge of Rectifier ass'y block to Motor 's terminals by solder as show in figure 6.

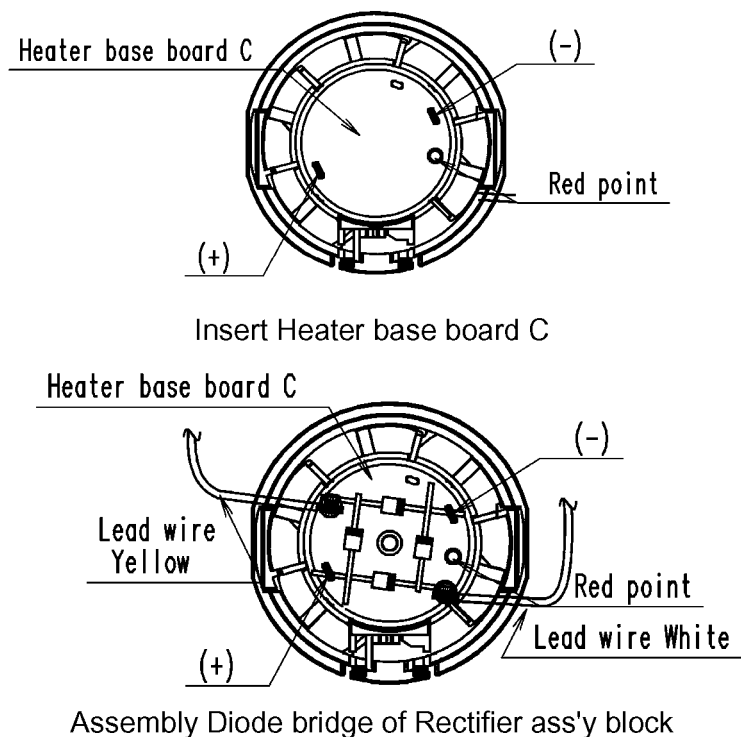


Figure 6

5. Assembly Select switch to Motor ass'y block ,insert two Lead wires (Black and Red) into slot of Air flow regulator as show in figure 7.

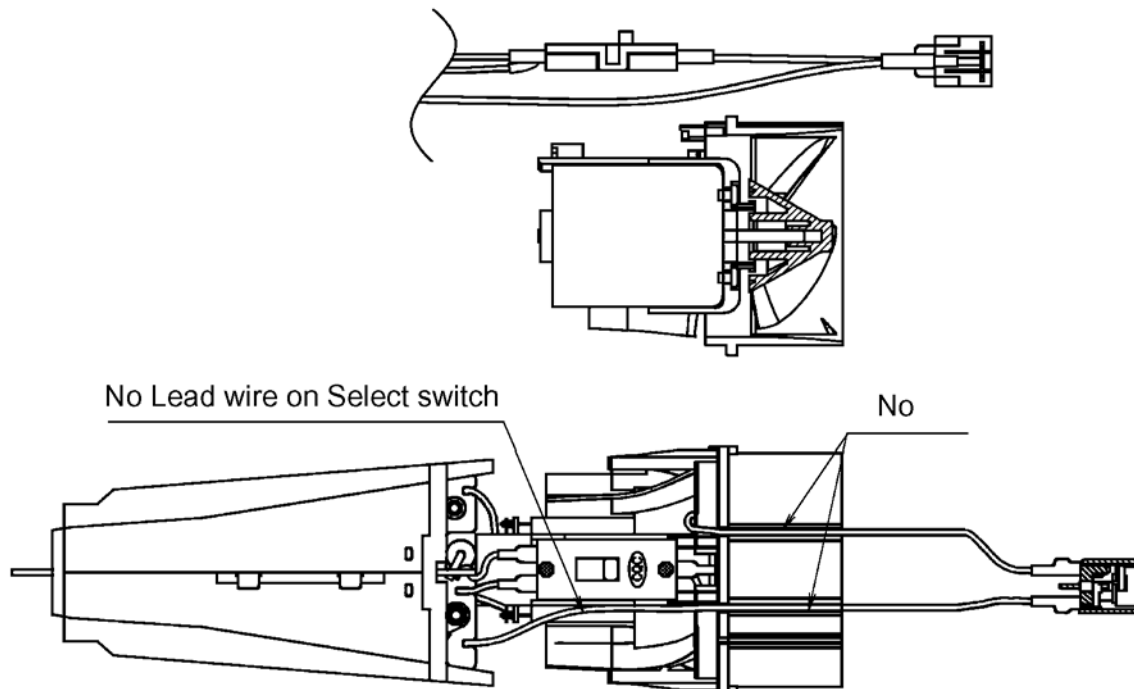


Figure 7

6. Assembly Parts into Housing B step by step as show in figure 8.

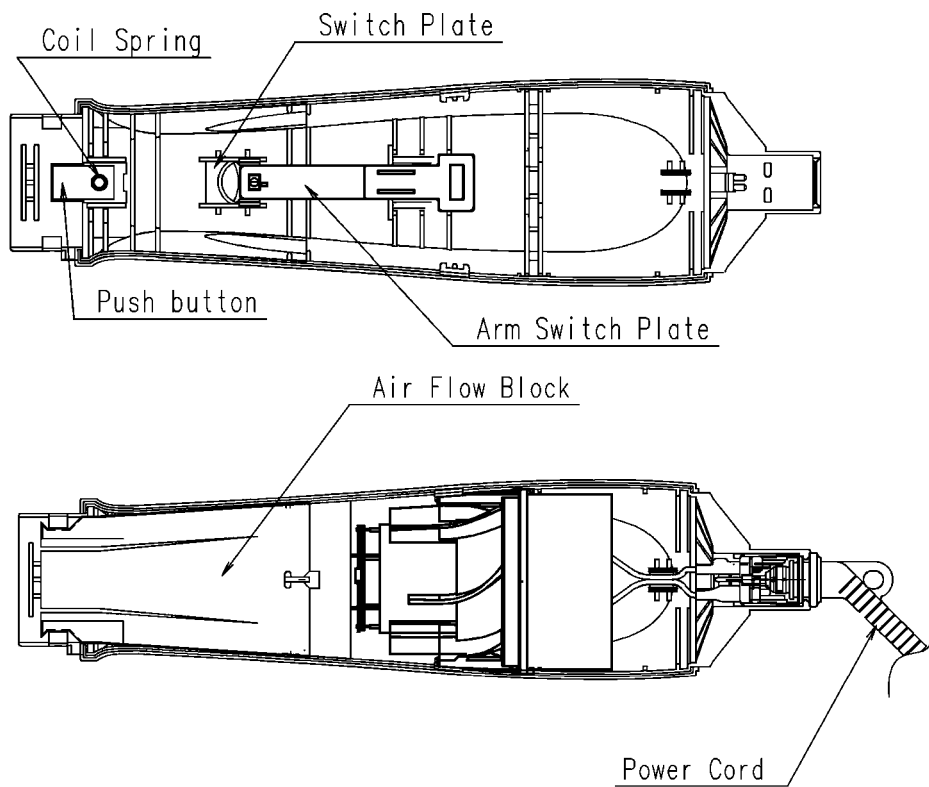


Figure 8

7. Assembly Housing A&B together, assembly Fixing ring, Filter, Escutcheon to Housing A&B and in the end tighter two Torx screws as show in figure 9.

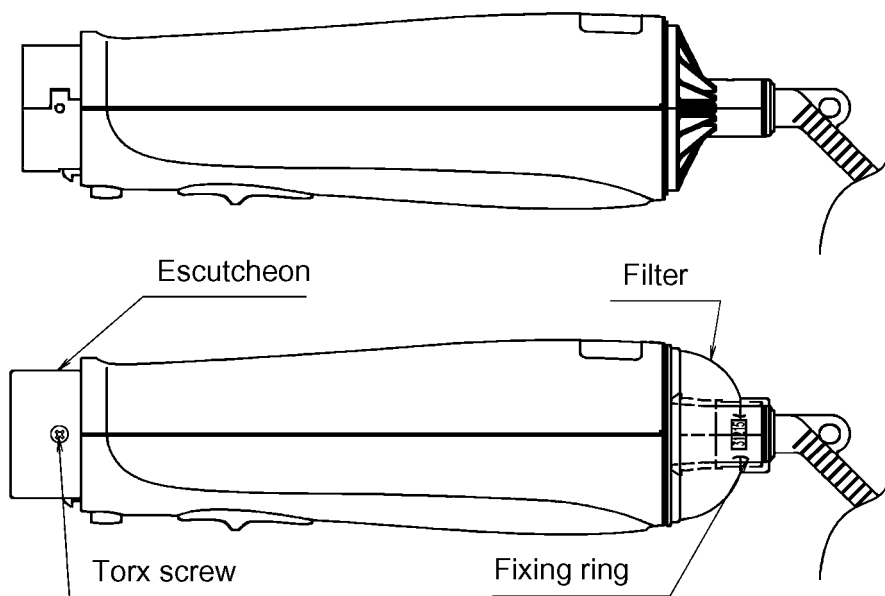
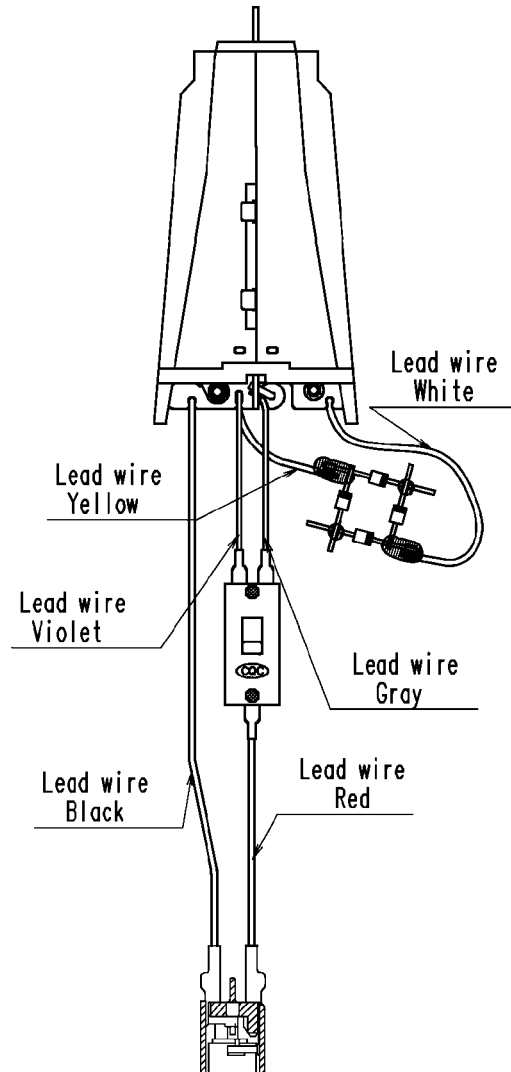


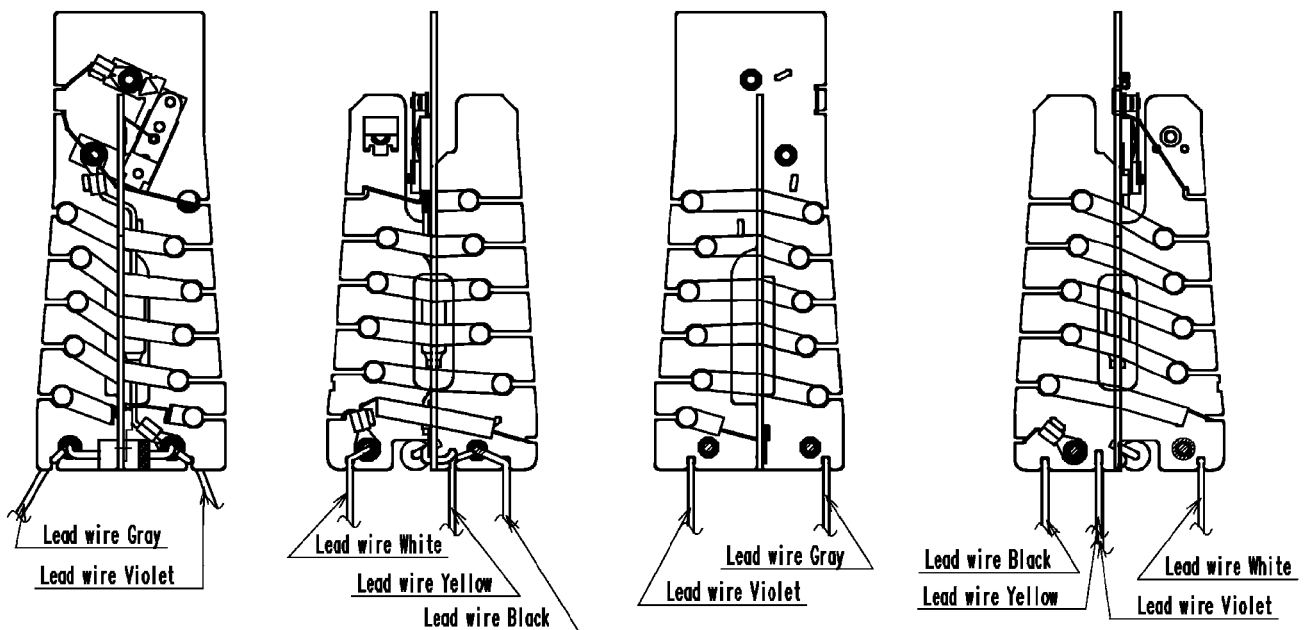
Figure 9



## 5 Wiring Connection Diagram

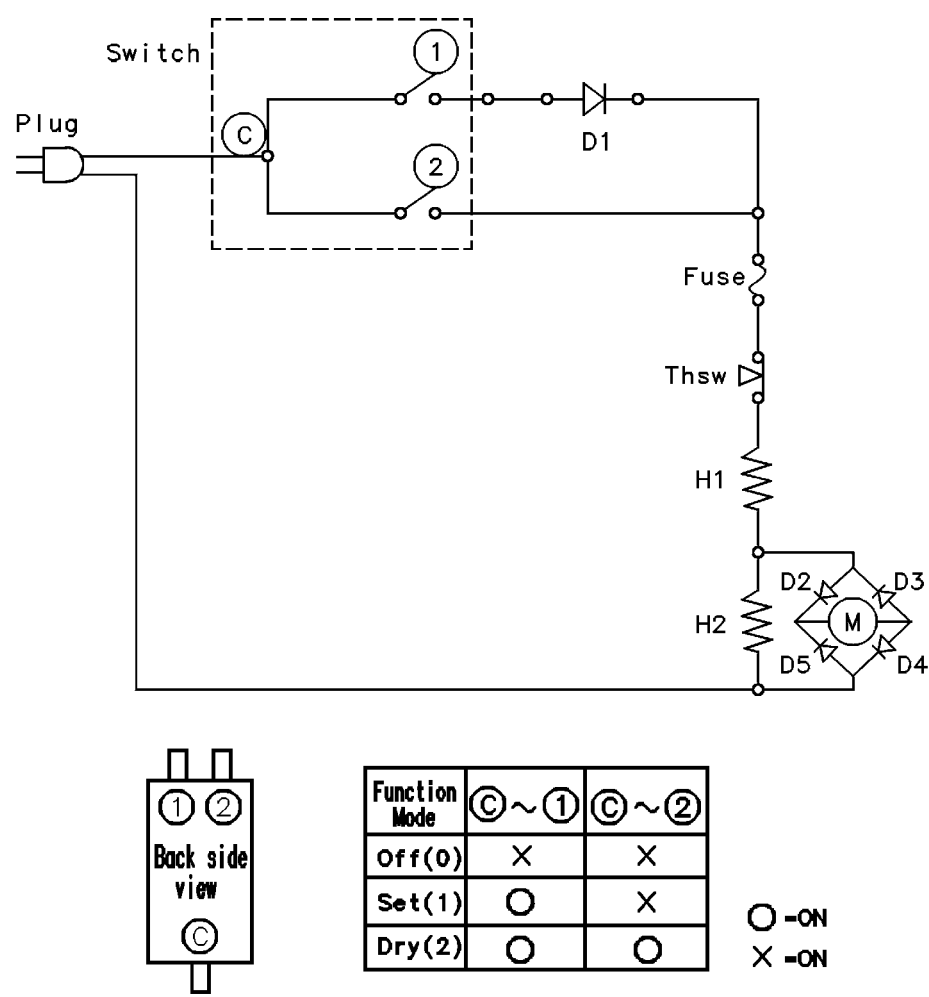


Air flow Block



Heater Block

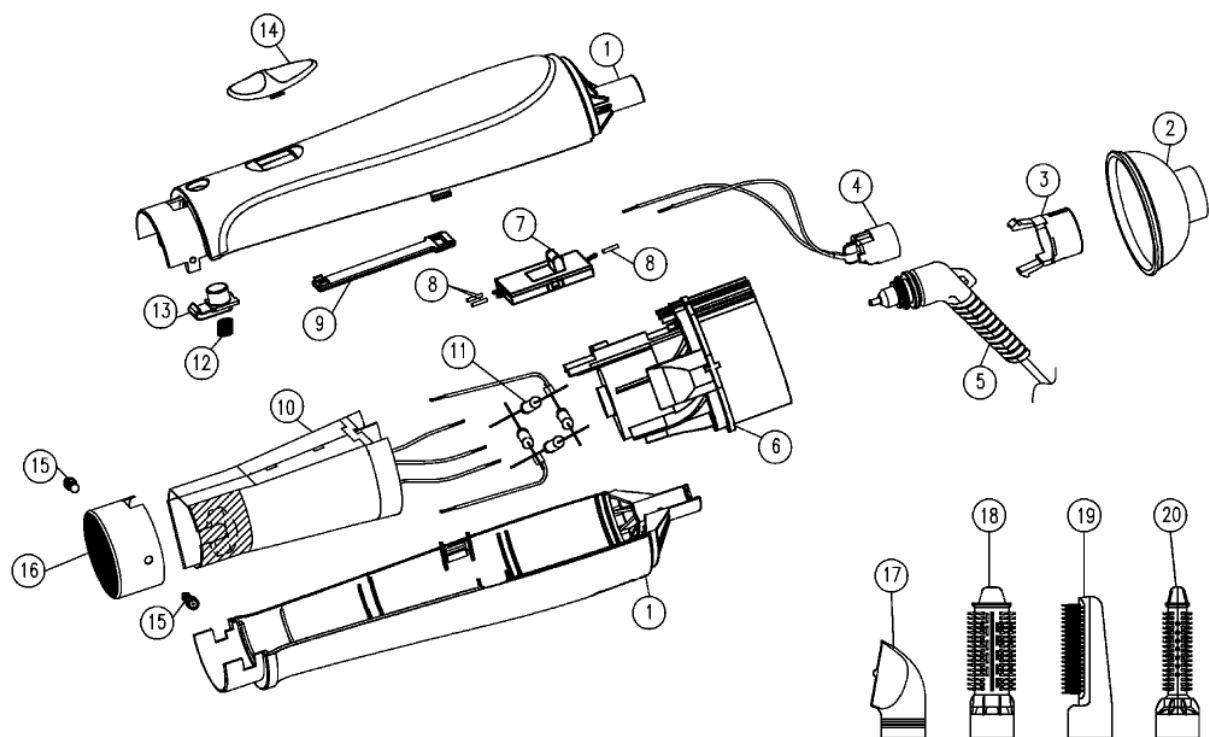
6 Schematic Diagram



SYMBOL	PART NAME	SPECIFICATION	Q'ty	REMARK
H1	RESISTANCE WIRE A	17.7±3%Ω/m	1	
H2	RESISTANCE WIRE B	21.1±3%Ω/m	1	
M	MOTOR	15VDC, 340mA	1	
Thsw	THERMAL CUT-OUT	120±5°C	1	
Fuse	THERMAL FUSE	15A 250V 184°C	1	
Switch	SELECT SWITCH	11A 125V 5.5A 250V	1	
D1	DIODE	1000VAC 7A	1	
D2-D5	RECTIFIER DIODE	600VAC 1A	1	
Plug	POWER CORD		1	

# 7 Exploded View and Replacement Parts List

Model No. : EH-KA42    Exploded View for EH-KA42



Remarks : \*1 Individual Available

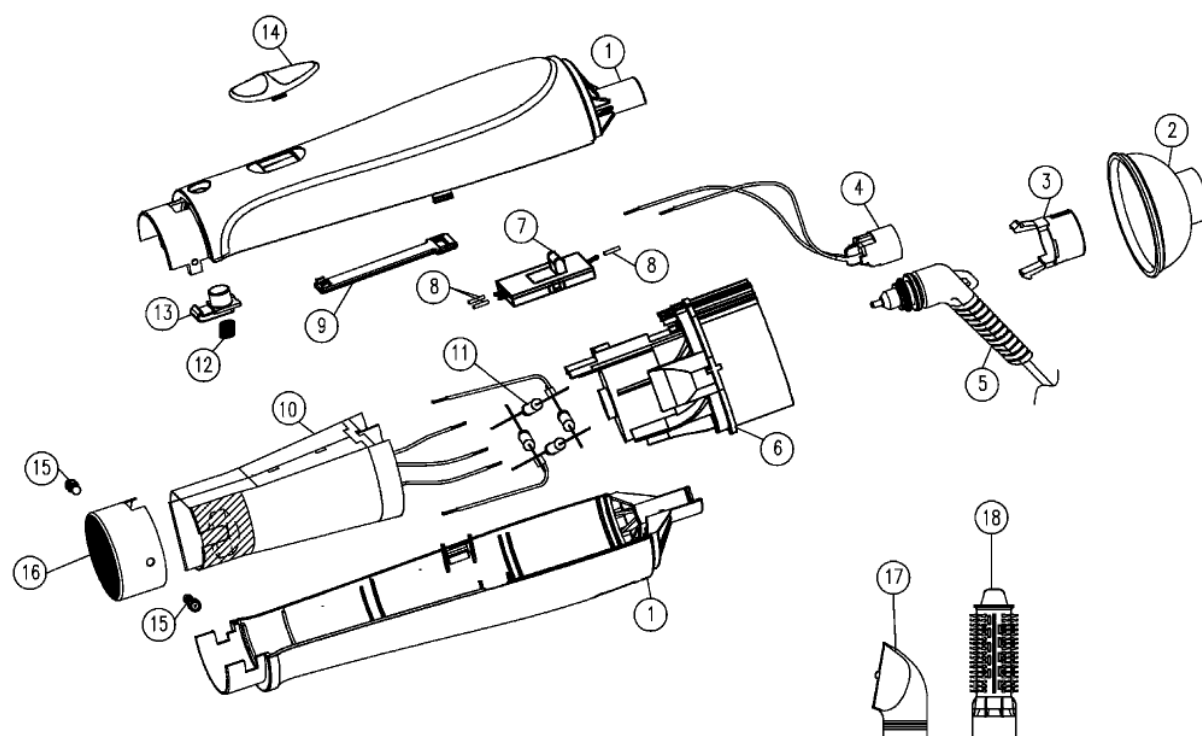
## Model No. : EH-KA42    Parts List

Safety	Ref. No.	Part No.	Part Name & Description	Q'ty	Remarks
EH-KA42					
	1	EHKA42HSVW	HOUSING AB	1	
	2	EHKA42FTVW	FILTER	1	
	3	EHKA42FRHW	FIXING RING	1	
	4	EHKA42CTBW	CONNECTOR COVER BLOCK	1	
	5	EHKA42PCHB2W	POWER CORD	1	(B2-PLUG)
	6	EHKA42MBW	MOTOR BLOCK	1	
	7	EHKA42SSW	SELECT SWITCH	1	(INCLUDE 3 INSULATION TUBES)
	8	EHKA42ITBW	INSULATION TUBE	3	(3PCS/PACK)
	9	EHKA42ASPVW	ARM SWITCH PLATE	1	
	10	EHKA42HBW	HEATER BLOCK	1	
	11	EHKA42RFBW	RECTIFIER ASS'Y BLOCK	1	
	12	EHKA42CSHW	COIL SPRING	1	
	13	EHKA42PBVW	PUSH BUTTON	1	
	14	EHKA42SPVW	SWITCH PLATE	1	
	15	EHKA42T2604W	TORX SCREW	2	*1
	16	EHKA42ESW	ESCUTCHEON	1	
	17	EHKA42NZVW	NOZZLE	1	
	18	EHKA42BRAVW	ROLLER BRUSH	1	
	19	EHKA42BAVW	BLOW BRUSH	1	
	20	EHKA42SRVW	SLIM ROLLER BRUSH	1	
	-	EHKA42S03UW	OPERATING INSTRUCTUIONS	1	
	-	EHKA4261501W	INDIVIDUAL PACKAGE	1	(FOR CODE V615 : INDIA)
	-	EHKA4264501W	INDIVIDUAL PACKAGE	1	(FOR CODE V645 : VIETNAM)
	-	EHKA42S09W	PULP FILLER FOR PACKAGE	1	

---

**Model No. : EH-KA22    Exploded View for EH-KA22**

---



**Remarks : \*1 Individual Available**

## Model No. : EH-KA22    Parts List

Safety	Ref. No.	Part No.	Part Name & Description	Q'ty	Remarks
EH-KA22					
	1	EHKA22HSVW	HOUSING AB	1	
	2	EHKA22FTVW	FILTER	1	
	3	EHKA22FRHW	FIXING RING	1	
	4	EHKA22CTBW	CONNECTOR COVER BLOCK	1	
	5	EHKA22PCHB2W	POWER CORD	1	(B2-PLUG)
	6	EHKA22MBW	MOTOR BLOCK	1	
	7	EHKA22SSW	SELECT SWITCH	1	(INCLUDE 3 INSULATION TUBES)
	8	EHKA22ITBW	INSULATION TUBE	3	(3PCS/PACK)
	9	EHKA22ASPVW	ARM SWITCH PLATE	1	
	10	EHKA22HBW	HEATER BLOCK	1	
	11	EHKA22RFBW	RECTIFIER ASS'Y BLOCK	1	
	12	EHKA22CSHW	COIL SPRING	1	
	13	EHKA22PBVW	PUSH BUTTON	1	
	14	EHKA22SPVW	SWITCH PLATE	1	
	15	EHKA22T2604W	TORX SCREW	2	*1
	16	EHKA22ESW	ESCUTCHEON	1	
	17	EHKA22NZVW	NOZZLE	1	
	18	EHKA22BRAVW	ROLLER BRUSH	1	
	-	EHKA22S03UW	OPERATING INSTRUCTUIONS	1	
	-	EHKA2261501W	INDIVIDUAL PACKAGE	1	(FOR CODE V615 : INDIA)
	-	EHKA2264501W	INDIVIDUAL PACKAGE	1	(FOR CODE V645 : VIETNAM)
	-	EHKA22S09W	PULP FILLER FOR PACKAGE	1	