

Service Manual

Negative Ion Steam Iron curl&Straighter

EH1575-A3



SPECIFICATIONS

Power Source	AC220-240V / 50-60Hz
Rated current	0.2A
Tank Quantity	approximately 10 ml
Barrel diameter	35 mm
Iron pipe temperature	approximately 135C°
Cord length	1.7 m
Weight	approximately 485 g (B2 plug) approximately 530 g (S3 plug)
accessory	Hair Band

WARNING

This service information is designed for experienced repair technicians only and is not designed for use by the general public. It does not contain warnings or cautions to advise non-technical individuals of potential dangers in attempting to service a product. Products powered by electricity should be serviced or repaired only by experienced professional technicians. Any attempt to service or repair the product or products dealt with in this service information by anyone else could result in serious injury or death.

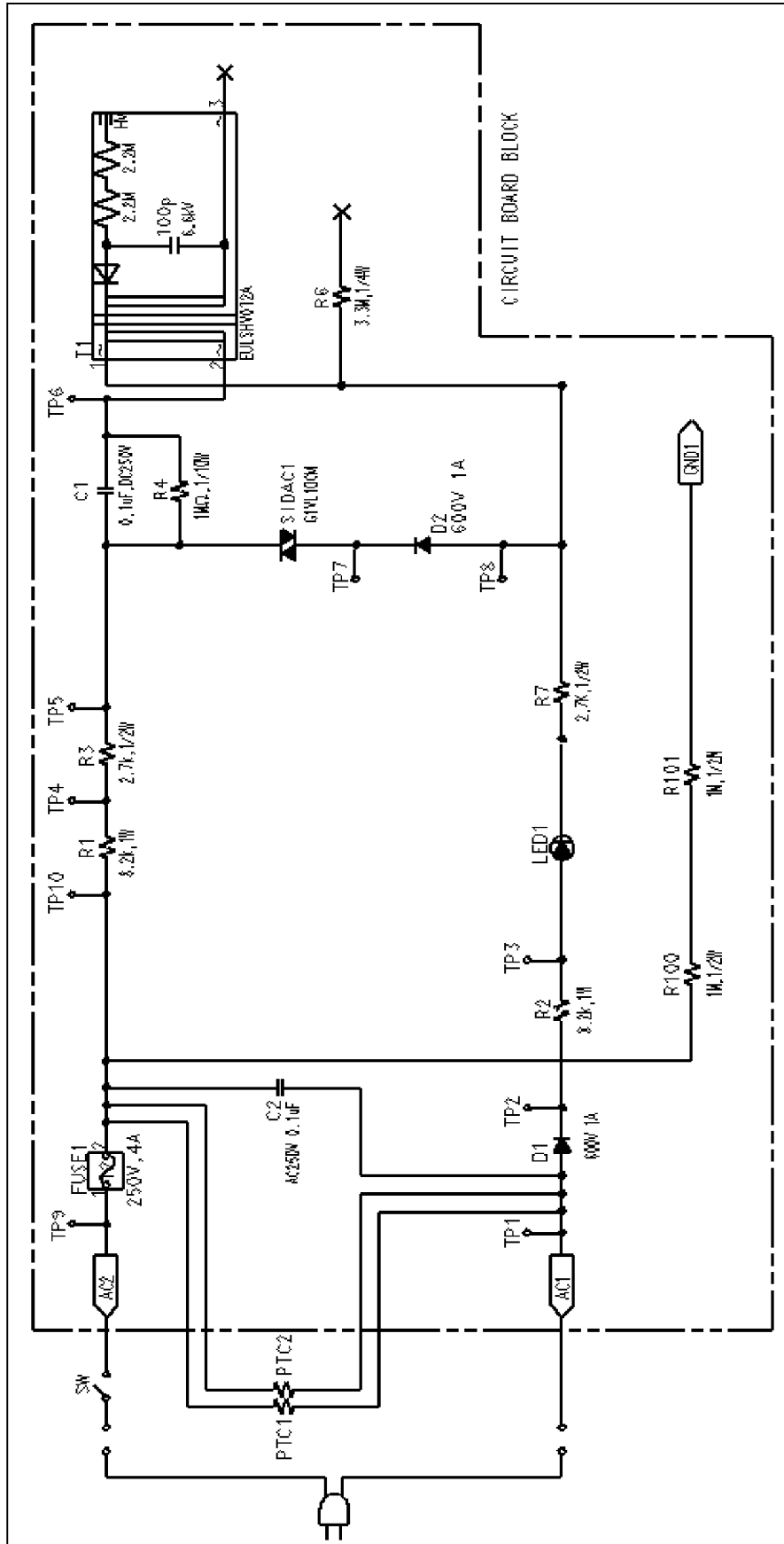
CONTENTS

	Page		Page
1 SCHEMATIC DIAGRAM	2	4 TROUBLESHOOTING GUIDE	7
2 WIRING CONNECTION DIAGRAM	3	5 EXPLODED VIEW	9
3 DISASSEMBLY INSTRUCTIONS	4	6 REPLACEMENT PARTS LIST	10

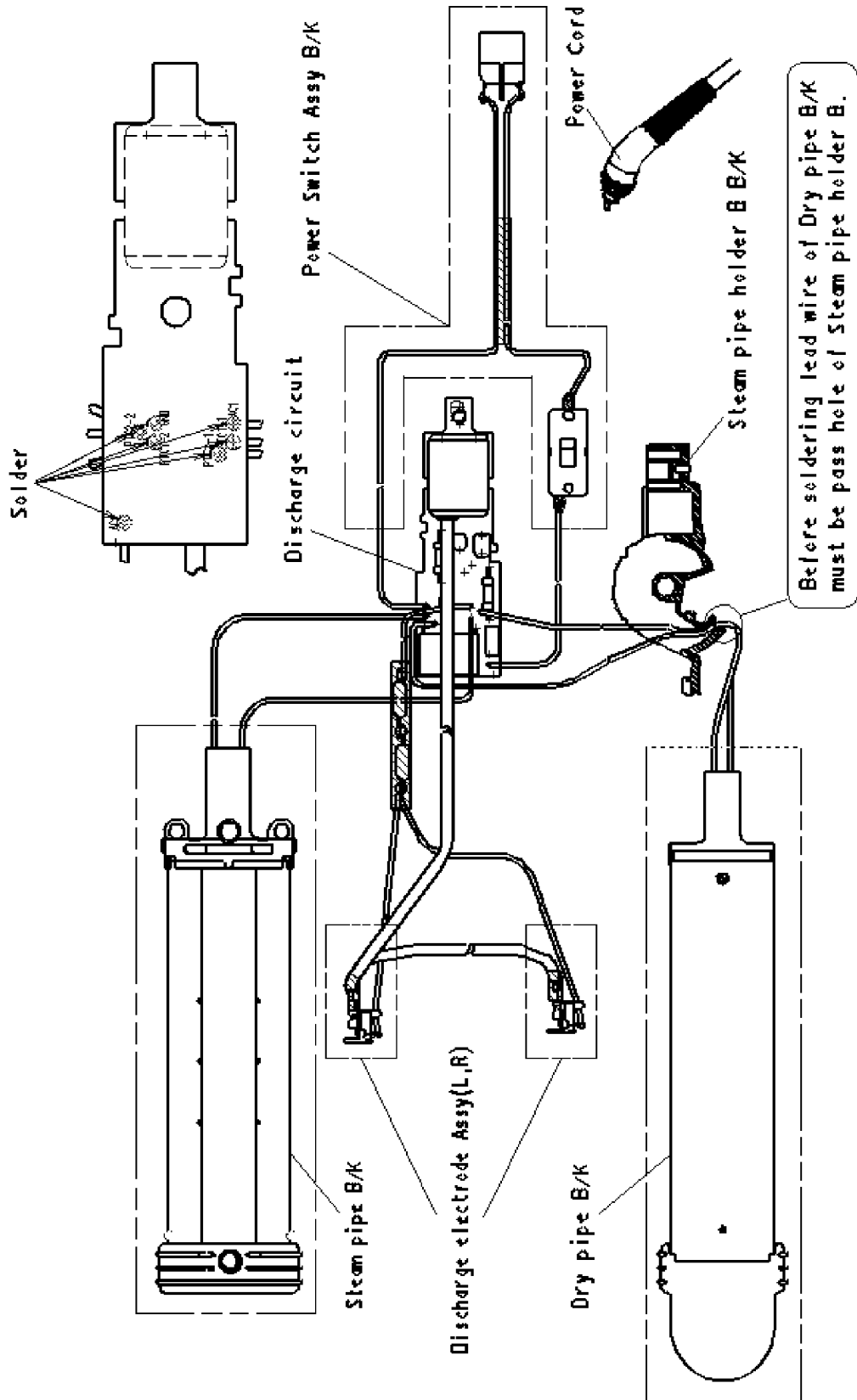
Panasonic

© 2005 Matsushita Electric Works (Thailand), Ltd. All rights reserved. Unauthorized copying and distribution is a violation of law.

1 SCHEMATIC DIAGRAM



2 WIRING CONNECTION DIAGRAM



3 DISASSEMBLY INSTRUCTIONS

3.1. Disassembly Dry pipe part

1. Remove torx screw (2.6x6.0) and slide the Fixing Ring as shown in Figure 1.

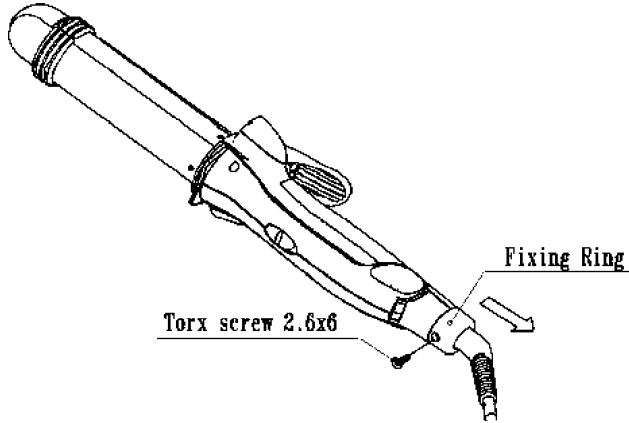


Figure 1

2. Remove the Hinge cover by use minus driver put into Hook as shown in Figure 2.

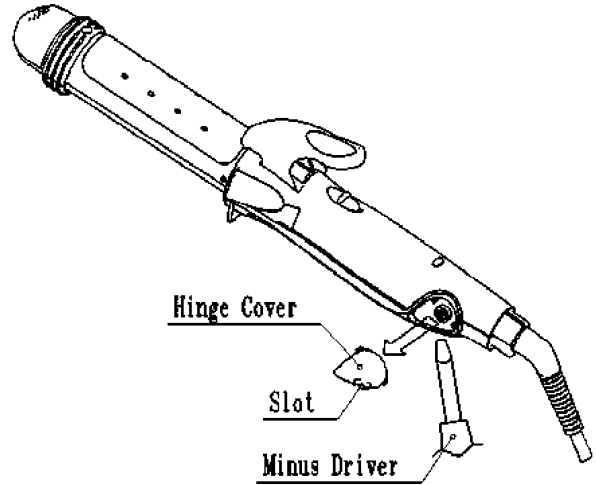


Figure 2

3. Remove torx screws(2.3x12 and 3x14) from Dry pipe holder as shown in Figure 3.

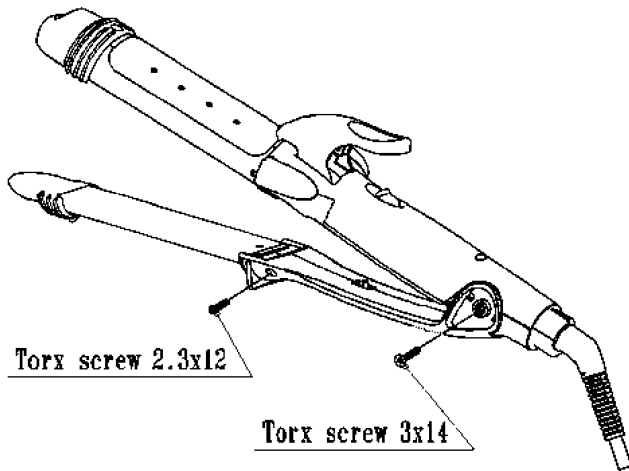


Figure 3

4. Take off Dry pipe holder at 2 Hooks and be careful not to make Hinge spring, Pusher A, Pusher B and locking switch button disappear as shown in Figure 4.

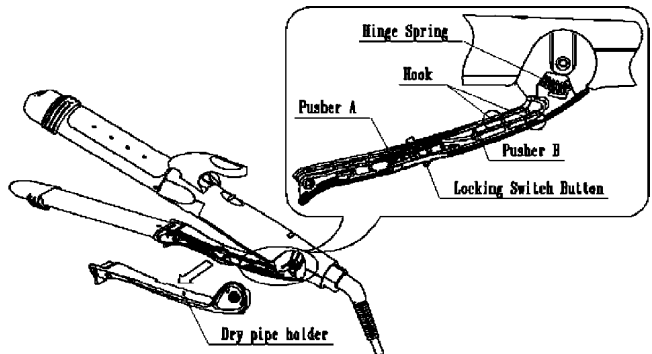


Figure 4

3.2. Disassembly Steam pipe part and Circuit Assembly B/K

1. Remove torx screws(2*12) 3 pieces from Steam pipe holder B as shown in Figure 5.

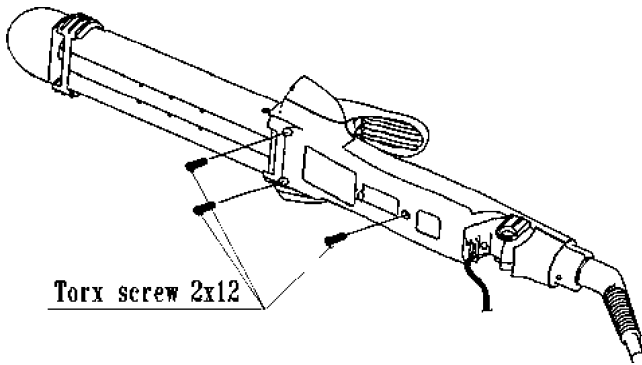


Figure 5

2. Take off Power cord and Steam pipe holder B by use Minus driver put into gap between Steam pipe and push at 2 Hooks as shown in Figure 6.

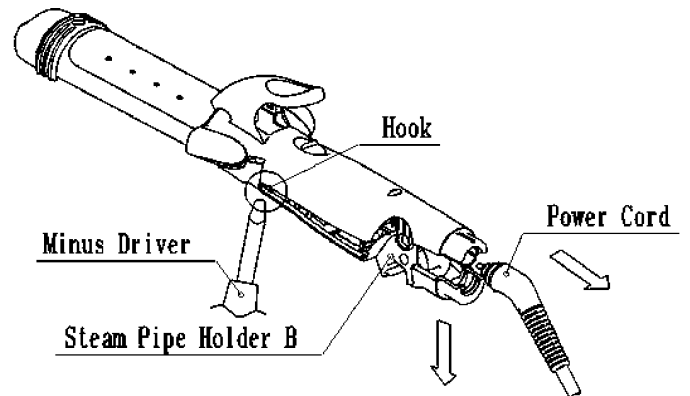


Figure 6

3. Take off Insulation sheet(2 pieces) from slot of Steam pipe holder A as shown in Figure 7.

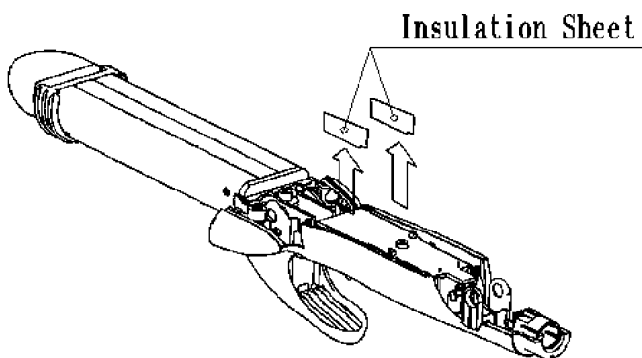


Figure 7

4. Remove Discharge B/K(both side) from Steam pipe holder A as shown in Figure 8.

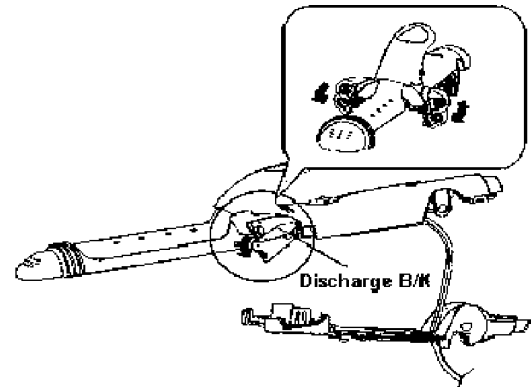


Figure 8

5. Remove Circuit B/K from 2 Hooks of Steam pipe holder A as shown in Figure 9.

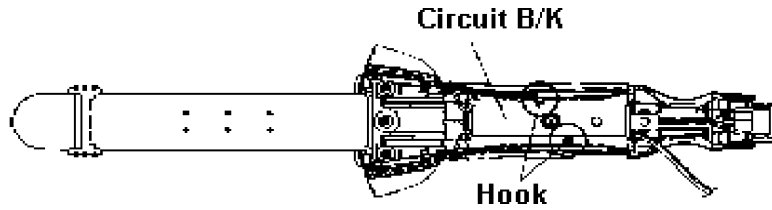


Figure 9

6. Take off Steam pipe from Steam pipe holder A as shown in Figure 10.

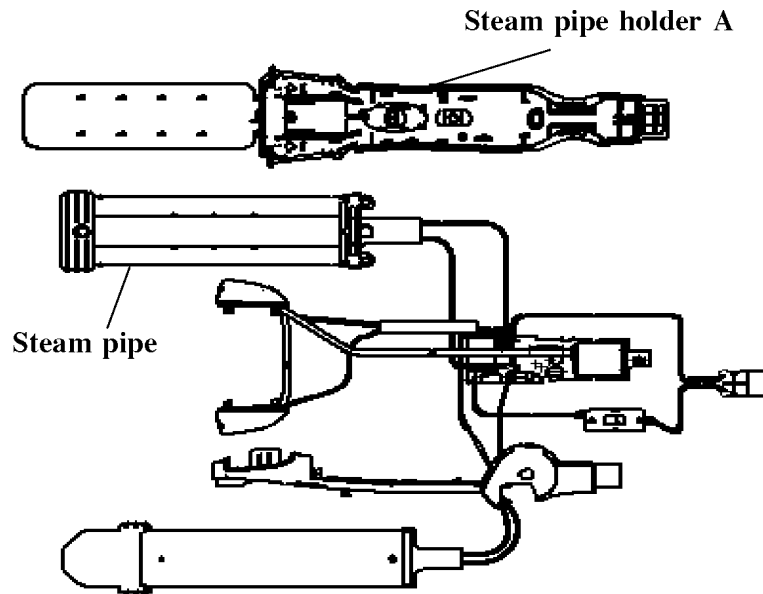


Figure 10

3.3. Disassembly Fixing plate B/K

1. Take off Fixing plate B/K from Steam pipe holder A by use Minus driver as shown in Figure 11.

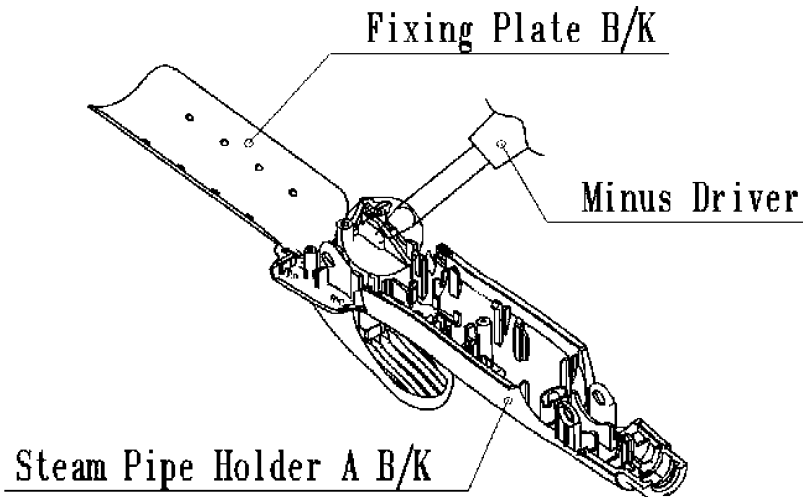
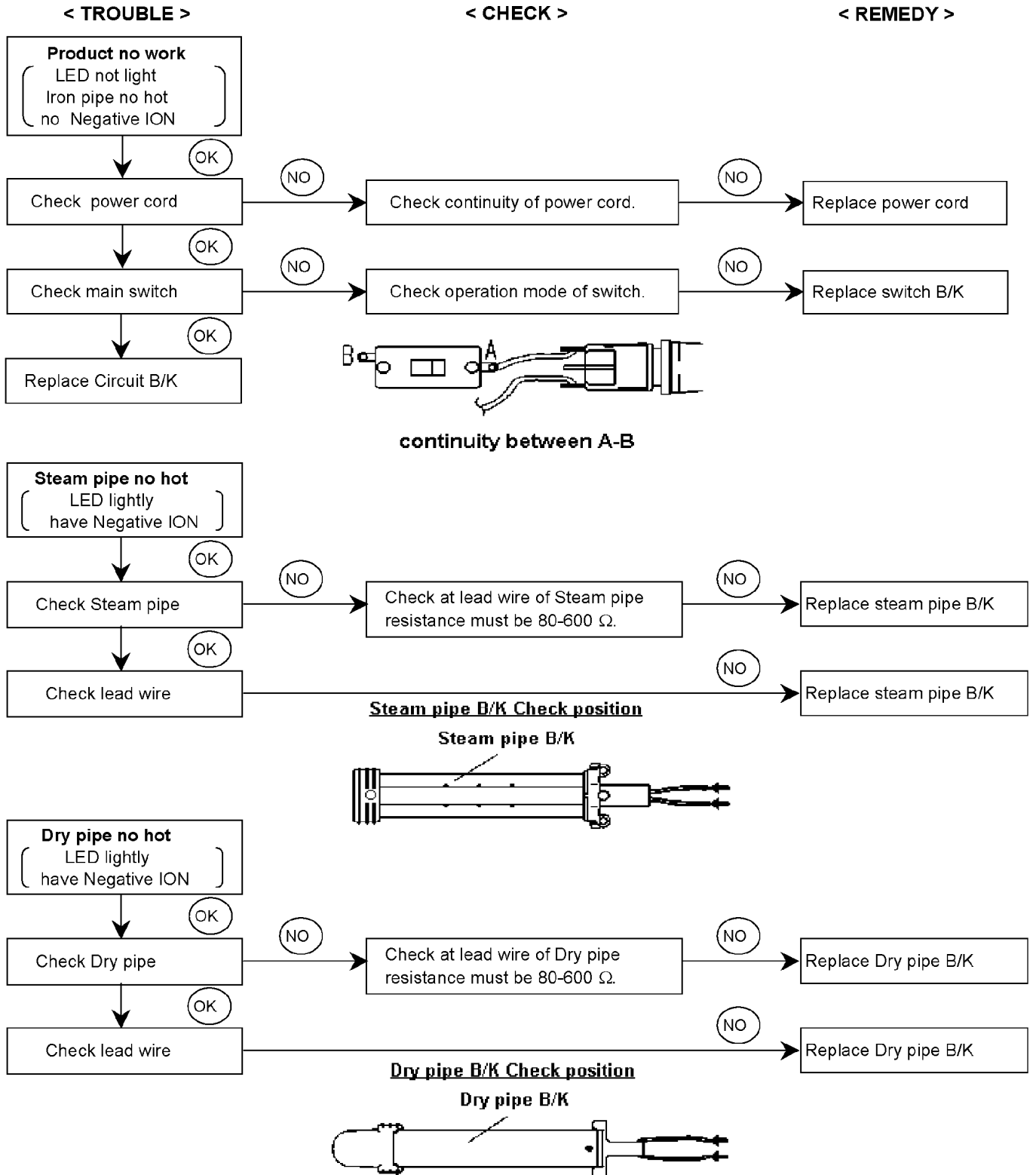
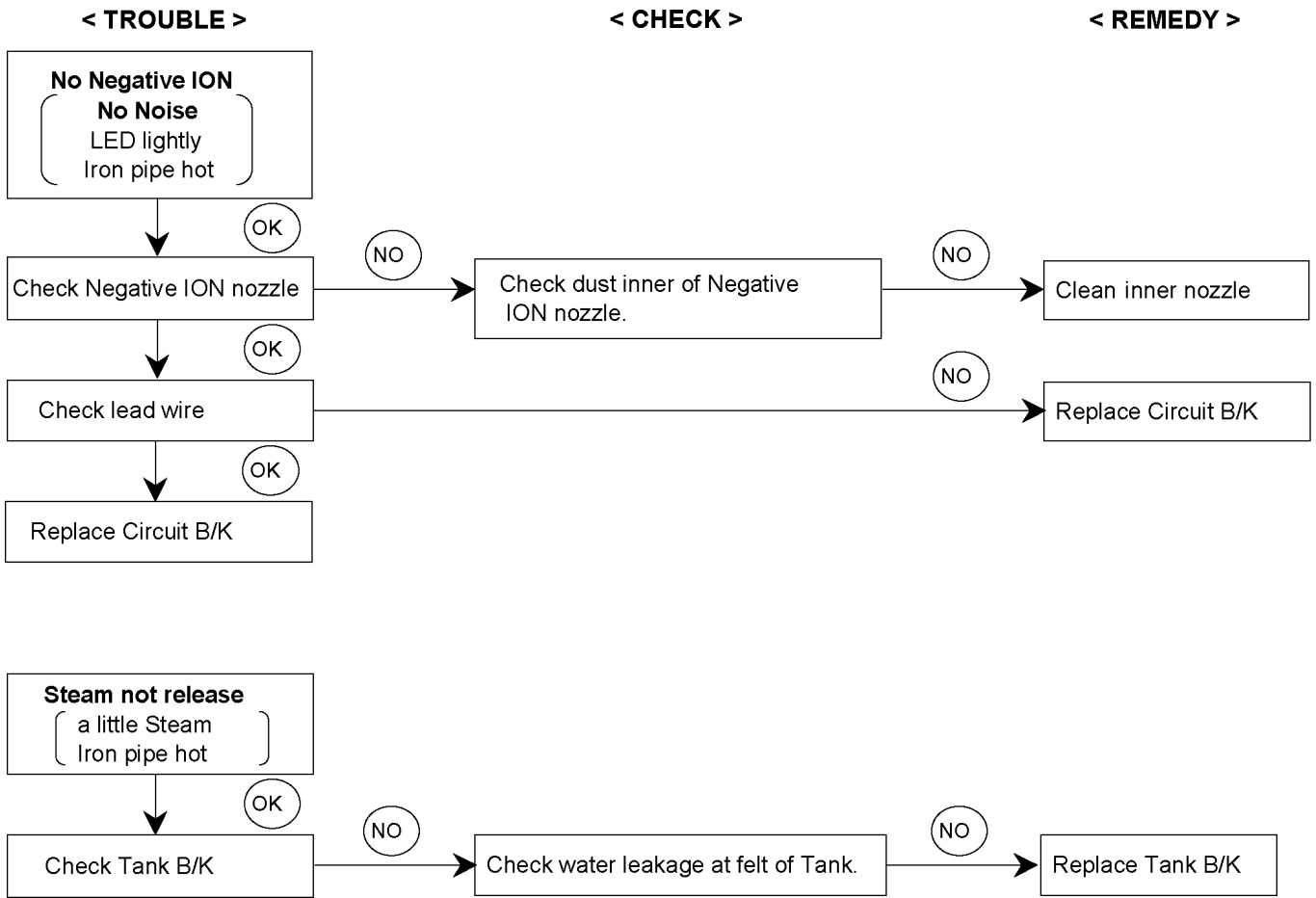


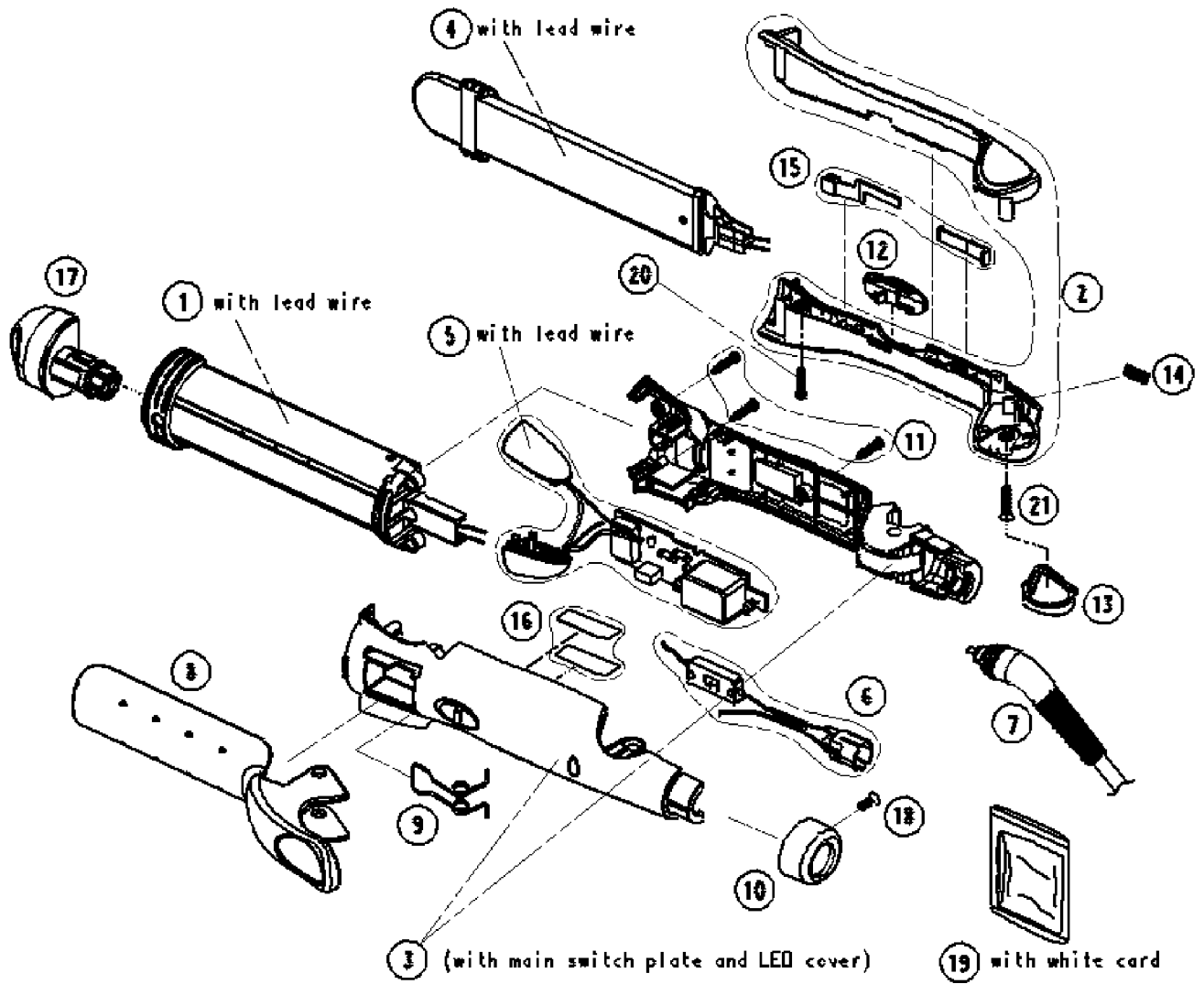
Figure 11

4 TROUBLESHOOTING GUIDE





5 EXPLODED VIEW



6 REPLACEMENT PARTS LIST

RMKS : * 1 Individual Available

Ref.No.	Part No.	Part Name & Descriptions	Per Unit	RMKS	
1	EH1575SIPW	STEAM IRON PIPE ASS`Y	1		
2	EH1575DPH2W	DRY PIPE HOLDER AB	1	VIOLET	OTHERS
2	EH1575DPH7W	DRY PIPE HOLDER AB	1	VIOLET	KOREA
3	EH1575SPHV2W	STEAM PIPE HOLDER AB	1	VIOLET	OTHERS
3	EH1575SPHV7W	STEAM PIPE HOLDER AB	1	VIOLET	KOREA
4	EH1575DIPW	DRY IRON PIPE ASS`Y	1		
5	EH1575DEAW	DISCHARGE ELECTRODE ASS`Y	1		
6	EH1575PSW	POWER SWITCH ASS`Y	1		
7	EH1575PCB2W	POWER CORD ASS`Y	1		OTHERS
7	EH1575PCCB2W	POWER CORD ASS`Y	1		KOREA
7	EH1575PCS3W	POWER CORD ASS`Y	1	S`PORE, HK, MALAYSIA, SAUDI A.	
8	EH1575FPW	FIXING PLATE ASS`Y	1		
9	EH1575SPCW	SPRING (FOR CLIP)	1		
10	EH1575FRVW	FIXING RING	1	VIOLET	
11	EH15752012W	TAPPING SCREW	3	2*12	*1
12	EH1575LSPVW	LOCKING SWITCH PLATE	1	VIOLET	
13	EH1575HCVW	HINGE COVER (VIOLET)	1		
14	EH1575SPHW	SPRING (FOR HINGE)	1		
15	EH1575PHW	PUSHER AB	1		
16	EH1575ISW	INSULATION SHEET	2		*2
17	EH1575TJAW	TANK WITH JOINT ASS`Y	1		
18	EH15752660W	TAPPING SCREW	1	2.6*6	
19	EH1575HBW	HAIR BAND	1		
20	EH15752312W	TAPPING SCREW	1	2.3*12	
21	EH15753014W	TAPPING SCREW	1	3*14	
-	EH1575S01W	INDIVIDUAL PACKAGE	1		
-	EH1575S03W	INSTRUCTION BOOKLET	1		
-	EH1575S09W	FILLER FOR PACKAGE	1		

RMKS :

* 1 Individual Available

* 2 Available 2pcs/unit

All parts are supplied from MEW-Thailand throught PLGA