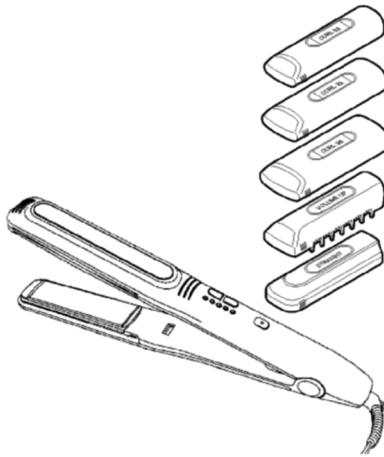


# Service Manual

(Household) Multi-styling Straightener

Model No. **EH-HW11**  
**EH-HW32**  
**EH-HW51**



ASIA  
 TAIWAN

### **⚠ WARNING**

This service information is designed for experienced repair technicians only and is not designed for use by the general public. It does not contain warnings or cautions to advise non-technical individuals of potential dangers in attempting to service a product. Products powered by electricity should be serviced or repaired only by experienced professional technicians. Any attempt to service or repair the product or products dealt with in this service information by anyone else could result in serious injury or death.

### **IMPORTANT SAFETY NOTICE**

There are special components used in this equipment which are important for safety. These parts are marked by ⚠ in the Schematic Diagrams, Circuit Board Diagrams, Exploded Views and Replacement Parts List. It is essential that these critical parts should be replaced with manufacturer's specified parts to prevent shock, fire or other hazards. Do not modify the original design without permission of manufacturer.

## TABLE OF CONTENTS

	PAGE	PAGE
1 Warning .....	2	
2 Specifications .....	2	
3 Troubleshooting Guide .....	3	
4 Disassembly and Assembly Instructions .....	5	
5 Wiring Connection Diagram .....	10	
6 Schematic Diagram .....	10	
7 Exploded View and Replacement Parts List .....	11	

# 1 Warning

## Caution:

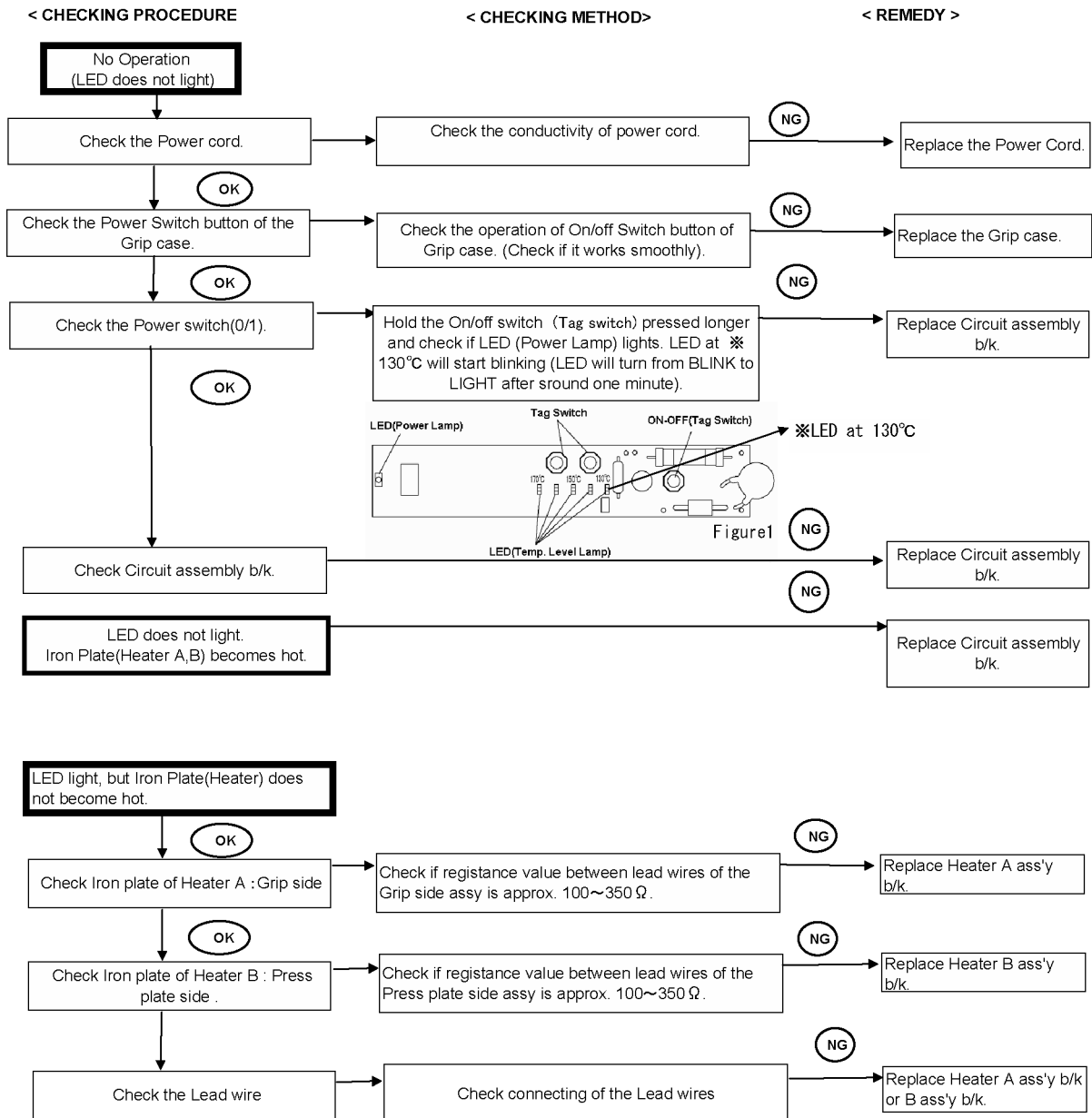
- Pb free solder has a higher melting point than standard solder; Typically the melting point is 50 - 70°F (30 - 40°C) higher. Please use a soldering iron with temperature control and adjust it to 750 ± 20°F (400 ± 10°C). In case of using high temperature soldering iron, please be careful not to heat too long.
- Pb free solder will tend to splash when heated too high (about 1100°F / 600°C).

# 2 Specifications

Model	EH-HW11	EH-HW32	EH-HW51
Power source/Power consumption	AC 100-130V 50-60 Hz 37W(Max.400W)		
	AC 220-240V 50-60 Hz 39W(Max.400W)		
Iron Plate Temperature	130 - 170 °C (5 Level adjustable)		
Cord length	A2,S3,B2 Plug 2.0 m		
Weight	B2(EU) = 371 g.		
	B2(Korea) = 363 g.		
	B2(Thai) = 360 g.		
	S3 = 421 g.		
	A2 = 360 g.		
Attachment	1 type	3 type	5 type

# 3 Troubleshooting Guide

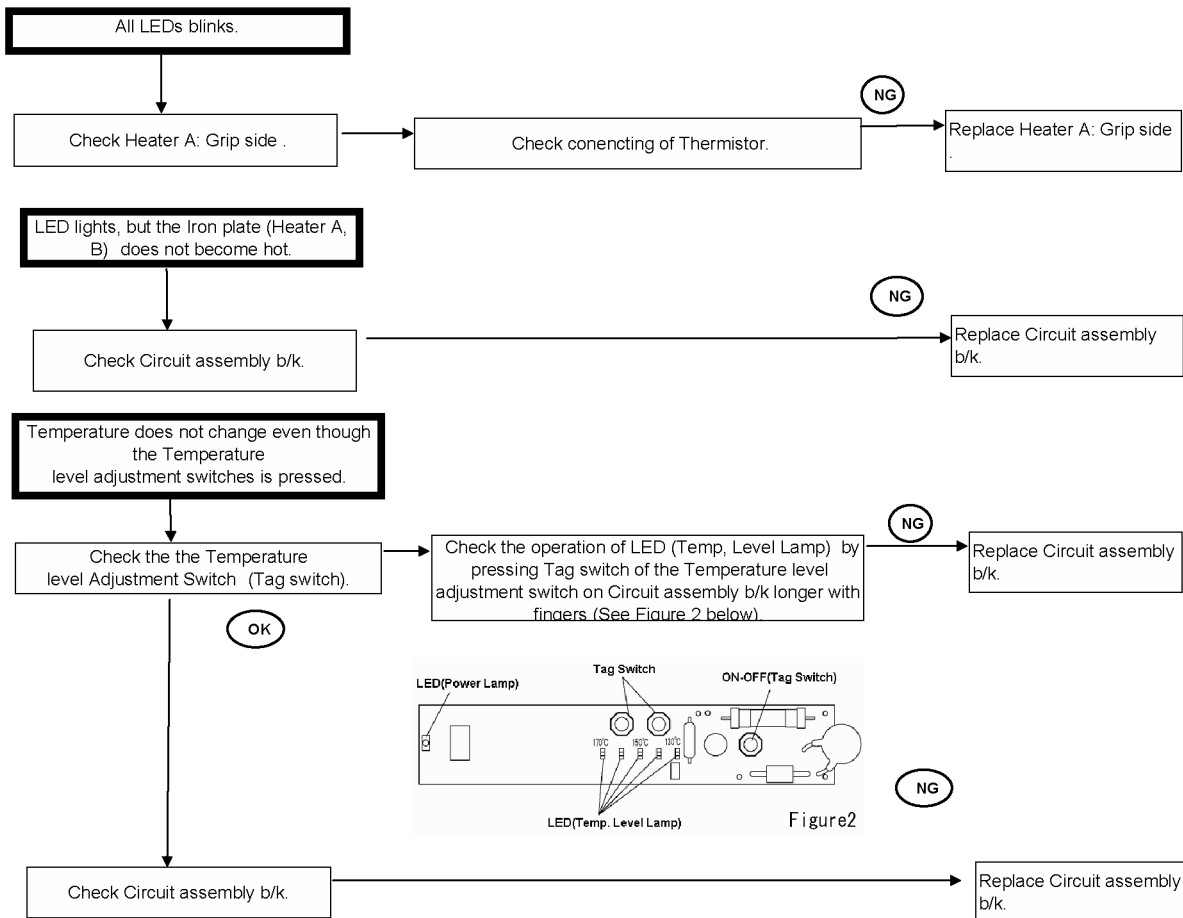
(Refer to Wiring Connection Diagram)



< CHECKING PROCEDURE

< CHECKING METHOD>

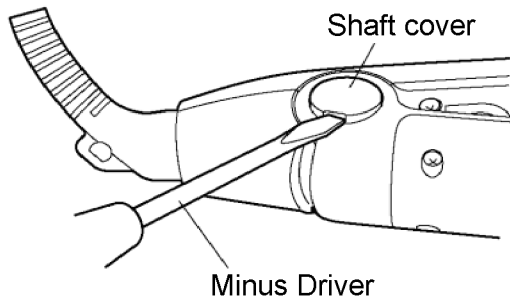
< REMEDY >



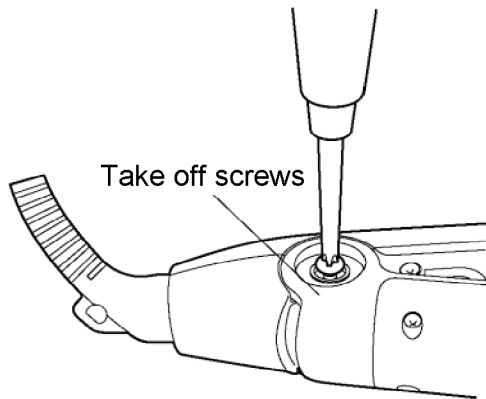
# 4 Disassembly and Assembly Instructions

## 4.1. Disassembly Instructions

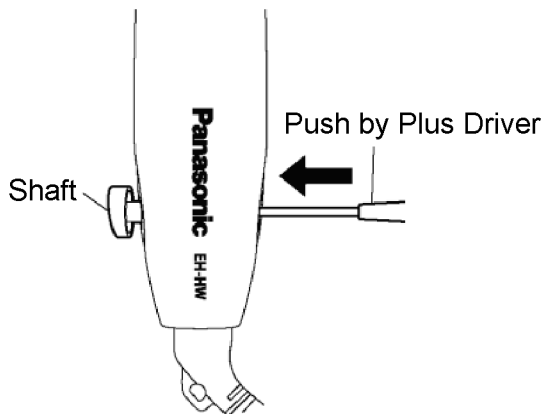
1. Remove Shaft Cover from Main Body by Slotted screwdriver(Minus driver).



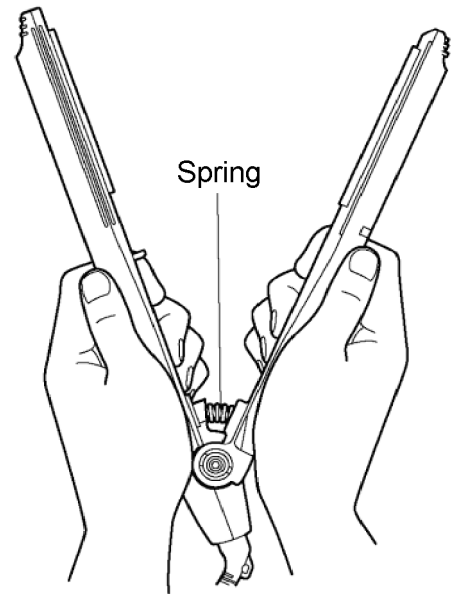
2. Remove Torx screws at Shaft position by Phillips screwdriver(Plus driver).



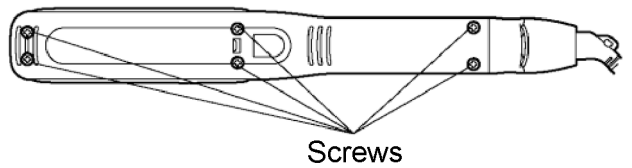
3. Push Shaft out by tiny-shaped Phillips screwdrivers (Plus driver) and pull it out from the main body.



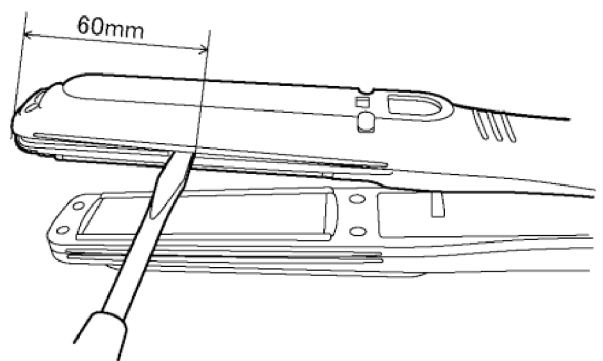
4. Remove Pivot spring by gripping and pulling it out from the Main body.



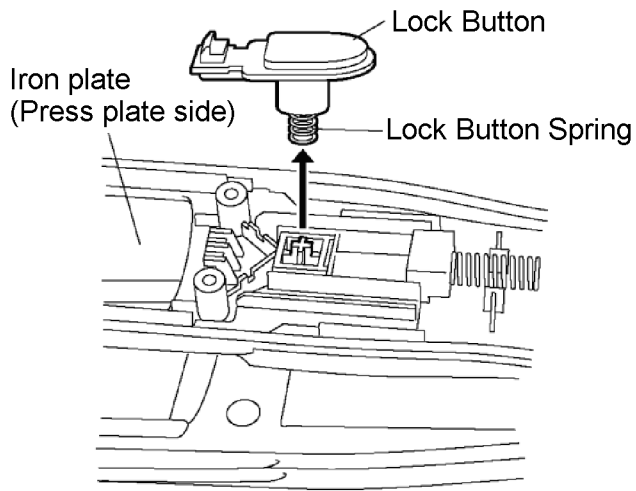
5. Remove 6 Screws for fitting Press plate side by Phillips screwdrivers(Plus driver).



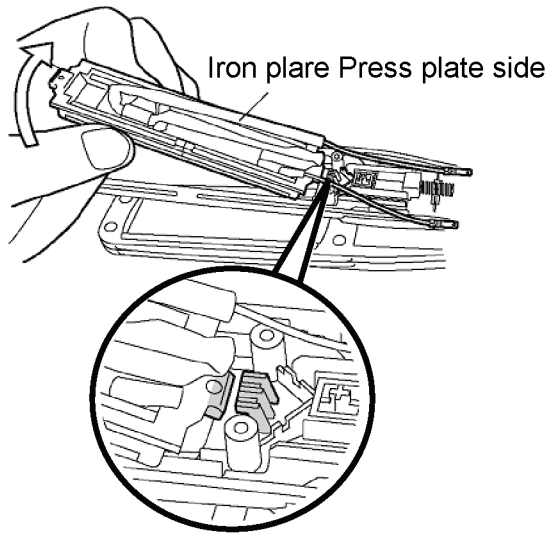
6. Press plate cover at the Hook part by Slotted screwdriver (Minus driver), as shown in Figure below.



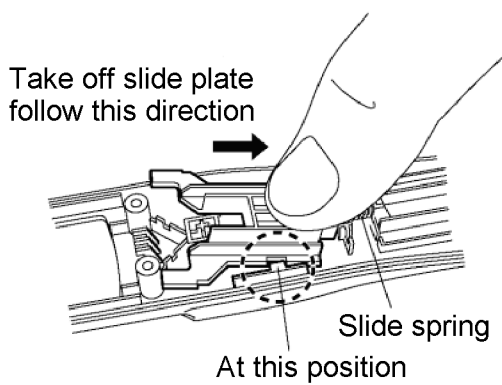
7. Remove Lock Button and Lock Button Spring.



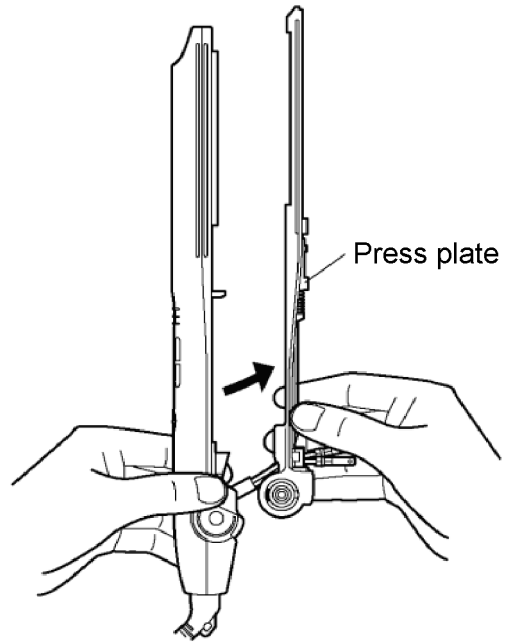
8. Remove Iron Plate of Heater B from Hook.



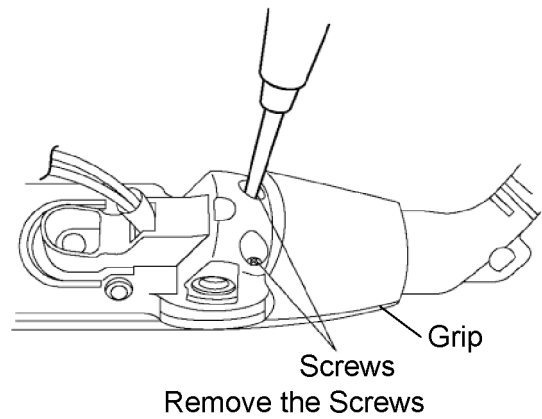
9. Remove Slide Plate and Slide Spring.



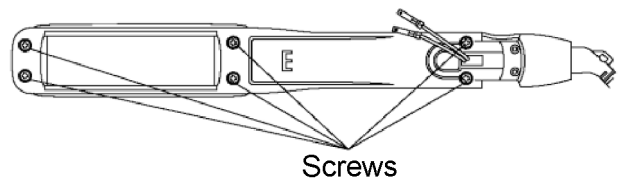
10. Take off Press Plate.



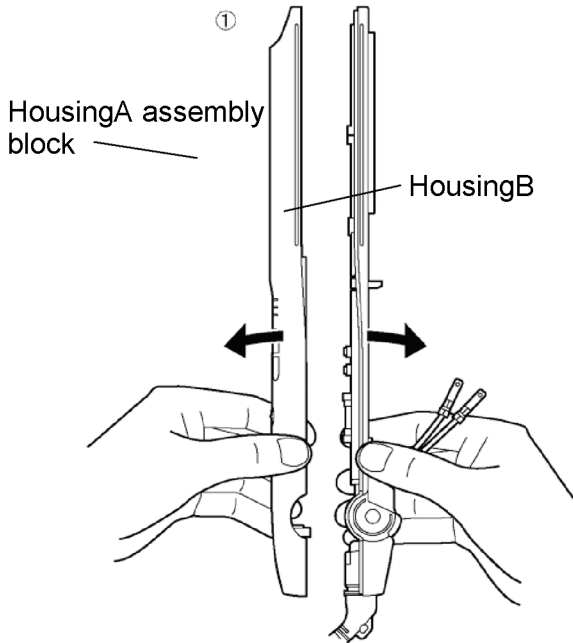
11. Remove 2 Screws of the Housing side by Phillips screwdriver(Plus driver).



12. Remove 6 Screws by Phillips screwdriver (Plus driver).

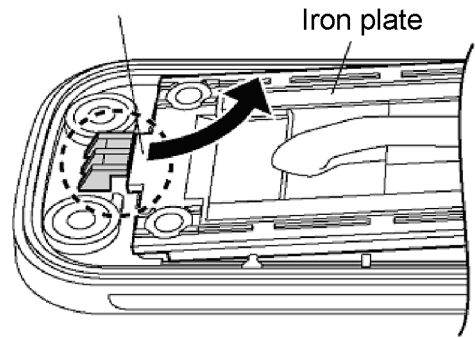


13. Remove Housing A from Housing B in Grip Case as following the drawing.



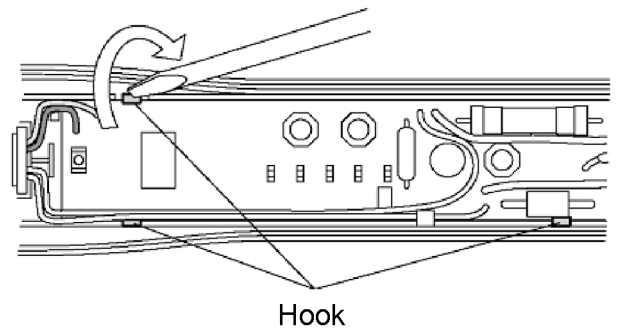
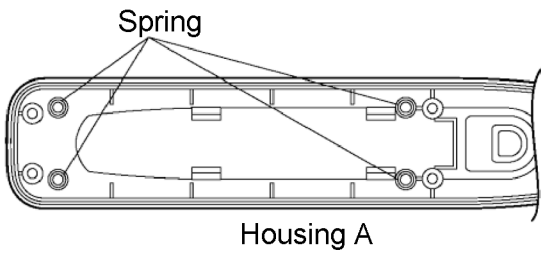
14. Take off Iron Plate and Circuit assembly b/k from Housing B.

① - Take off Iron plate from Hook of Housing B.



Remove Circuit assembly b/k by pushing and lift Hook of Housing A.

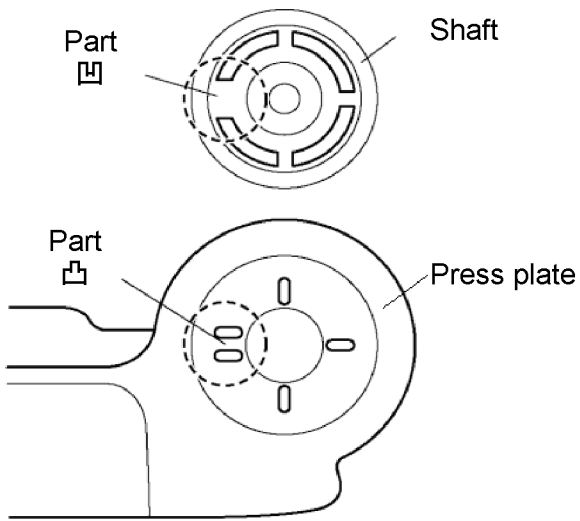
② 'When removing Housing A, be careful of not being lost 4 Springs in Figure below.



## 4.2. Assembly and Disassembly Points

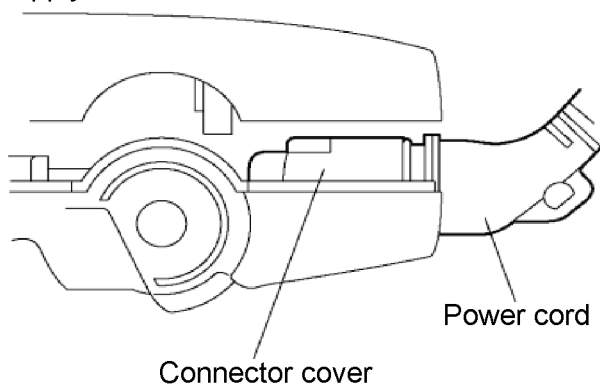
### 1. Shaft Cover fixing point.

There is a control direction. Inlay  
☐ :convex into ☐ : cavity as below.



### 2. Housing B Assembly Point.

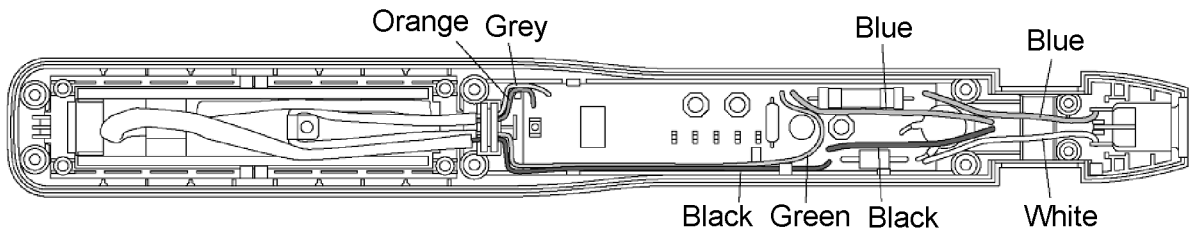
Attach the Case after making sure that the Power cord is  
connected to the Connector cover.  
Apply little amount of Floil onto Connector of the Power cord.



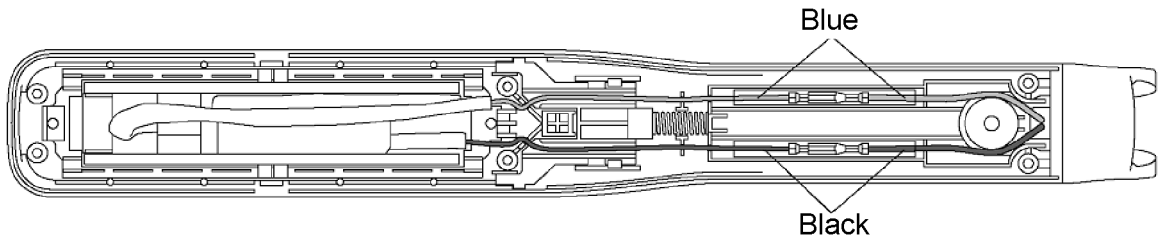


### 4.3. Lead wire of Iron Plate(Heater A, Heater B) and Circuit arrangement points.

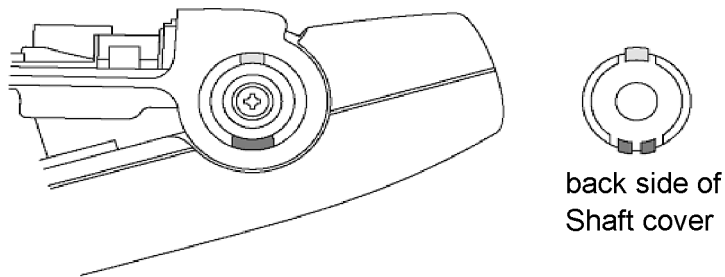
1. Lead wire of Iron Plate(Heater A assembly b/k) and Circuit assembly b/k arrangement follows as below.



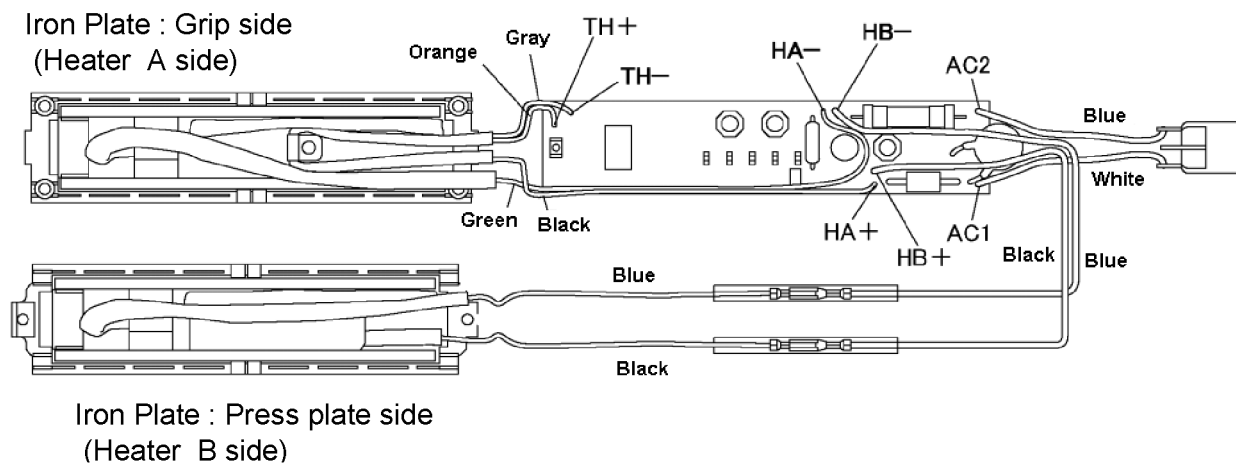
2. Lead wire of Iron Plate(Heater B assembly b/k) arrangement follows as below.



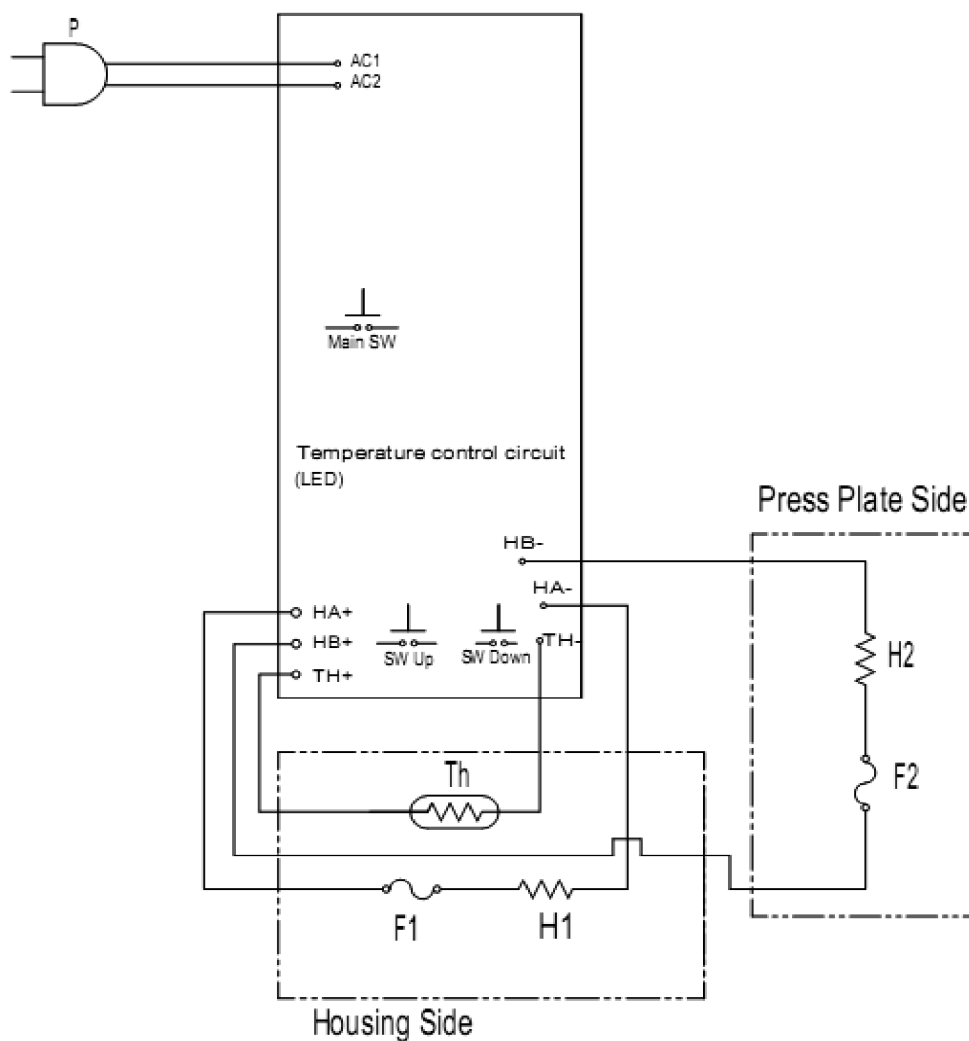
3. Shaft cover must have a control direction.



## 5 Wiring Connection Diagram

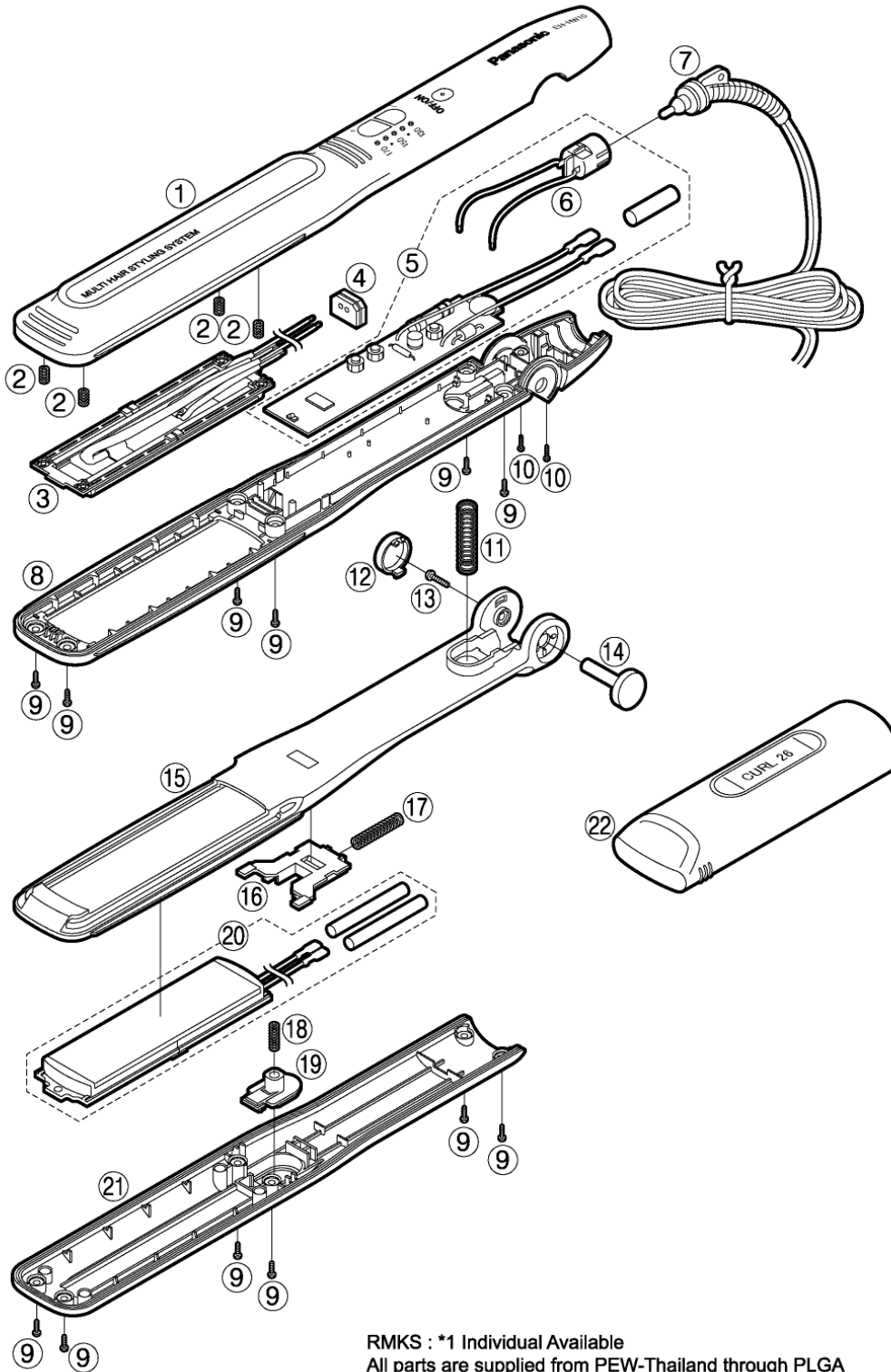


## 6 Schematic Diagram



# 7 Exploded View and Replacement Parts List

Model No. : EH-HW11 Exploded View for EH-HW11

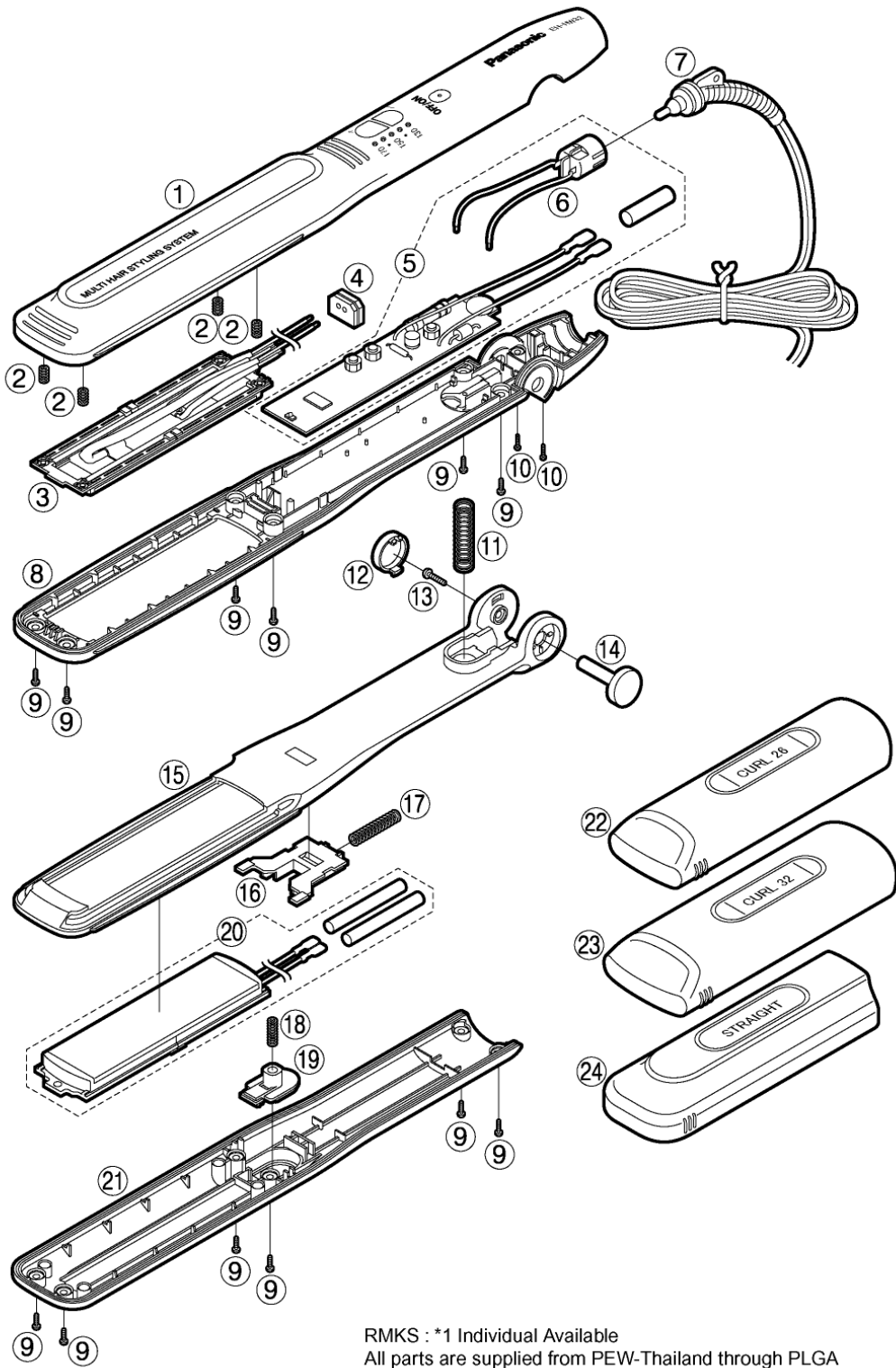


RMKS : \*1 Individual Available  
All parts are supplied from PEW-Thailand through PLGA

## Model No. : EH-HW11 Parts List

Safety	Ref. No.	Part No.	Part Name & Description	Q'ty	Remarks
EH-HW11					
	1	EHHW11HSABW	HOUSING A ASSEMBLY BLOCK	1	
	2	EHHW11FSW	FLOATING SPRING	4	*1
	3	EHHW11HABW	HEATER A ASSEMBLY BLOCK	1	
	4	EHHW11PKW	PACKING	1	
	5	EHHW11CCAW	CIRCUIT ASSEMBLY BLOCK	1	(INCLUDE 1 INSULATION TUBE,CONNECTOR COVER BLOCK)
	6	EHHW11CTBW	CONNECTOR COVER BLOCK	1	
	7	EHHW11PCA2W	POWER CORD	1	A2-PLUG, TAIWAN
	7	EHHW11PCB2W	POWER CORD	1	B2-PLUG, OTHERS
	7	EHHW11PC7B2W	POWER CORD	1	B2-PLUG, KOREA
	7	EHHW11PCS3W	POWER CORD	1	S3-PLUG
	8	EHHW11HSBB1W	HOUSING B	1	TAIWAN
	8	EHHW11HSBBW	HOUSING B	1	OTHERS
	8	EHHW11HSBB6W	HOUSING B	1	SAUDI ARABIA
	8	EHHW11HSBB7W	HOUSING B	1	KOREA
	9	EHHW11T2606W	TAPPING SCREW 2.6*6	12	*1
	10	EHHW11T2060W	TAPPING SCREW 2.0*6	2	*1
	11	EHHW11PSSW	PIVOT SPRING	1	
	12	EHHW11SCBW	SHAFT COVER	1	
	13	EHHW11T3012W	TORX SCREW 3.0*12	1	
	14	EHHW11SHBW	SHAFT	1	
	15	EHHW11PPBW	PRESS PLATE	1	
	16	EHHW11SPBW	SLIDE PLATE	1	
	17	EHHW11SSW	SLIDE SPRING	1	
	18	EHHW11LBSW	LOCK BUTTON SPRING	1	
	19	EHHW11LBBW	LOCK BUTTON	1	
	20	EHHW11HBBW	HEATER B ASSEMBLY BLOCK	1	(INCLUDE 2 INSULATION TUBES)
	21	EHHW11PPCB1W	PRESS PLATE COVER	1	(INCLUDE 1 ALUMINUM SEAL), TAIWAN
	21	EHHW11PPCB7W	PRESS PLATE COVER	1	(INCLUDE 1 ALUMINUM SEAL), KOREA
	21	EHHW11PPCBW	PRESS PLATE COVER	1	(INCLUDE 1 ALUMINUM SEAL), OTHERS
	22	EHHW11C26BW	CURL 26 ATTACHMENT	1	
	-	EHHW1113501W	INDIVIDUAL PACKAGE	1	(FOR EH-HW11-K135)
	-	EHHW1161501W	INDIVIDUAL PACKAGE	1	(FOR EH-HW11-K615)
	-	EHHW1164501W	INDIVIDUAL PACKAGE	1	(FOR EH-HW11-K645)
	-	EHHW1165501W	INDIVIDUAL PACKAGE	1	(FOR EH-HW11-K655)
	-	EHHW1166501W	INDIVIDUAL PACKAGE	1	(FOR EH-HW11-K665)
	-	EHHW1167501W	INDIVIDUAL PACKAGE	1	(FOR EH-HW11-K675)
	-	EHHW1168501W	INDIVIDUAL PACKAGE	1	(FOR EH-HW51-K685)
	-	EHHW11S09W	PULP FILLER	1	
	-	EHHW1113503W	INSTRUCTION BOOKLET	1	TAIWAN
	-	EHHW11S03W	INSTRUCTION BOOKLET	1	OTHERS
	-	EHHW11S04W	EASY MANUAL	1	

**Model No. : EH-HW32 Exploded View for EH-HW32**

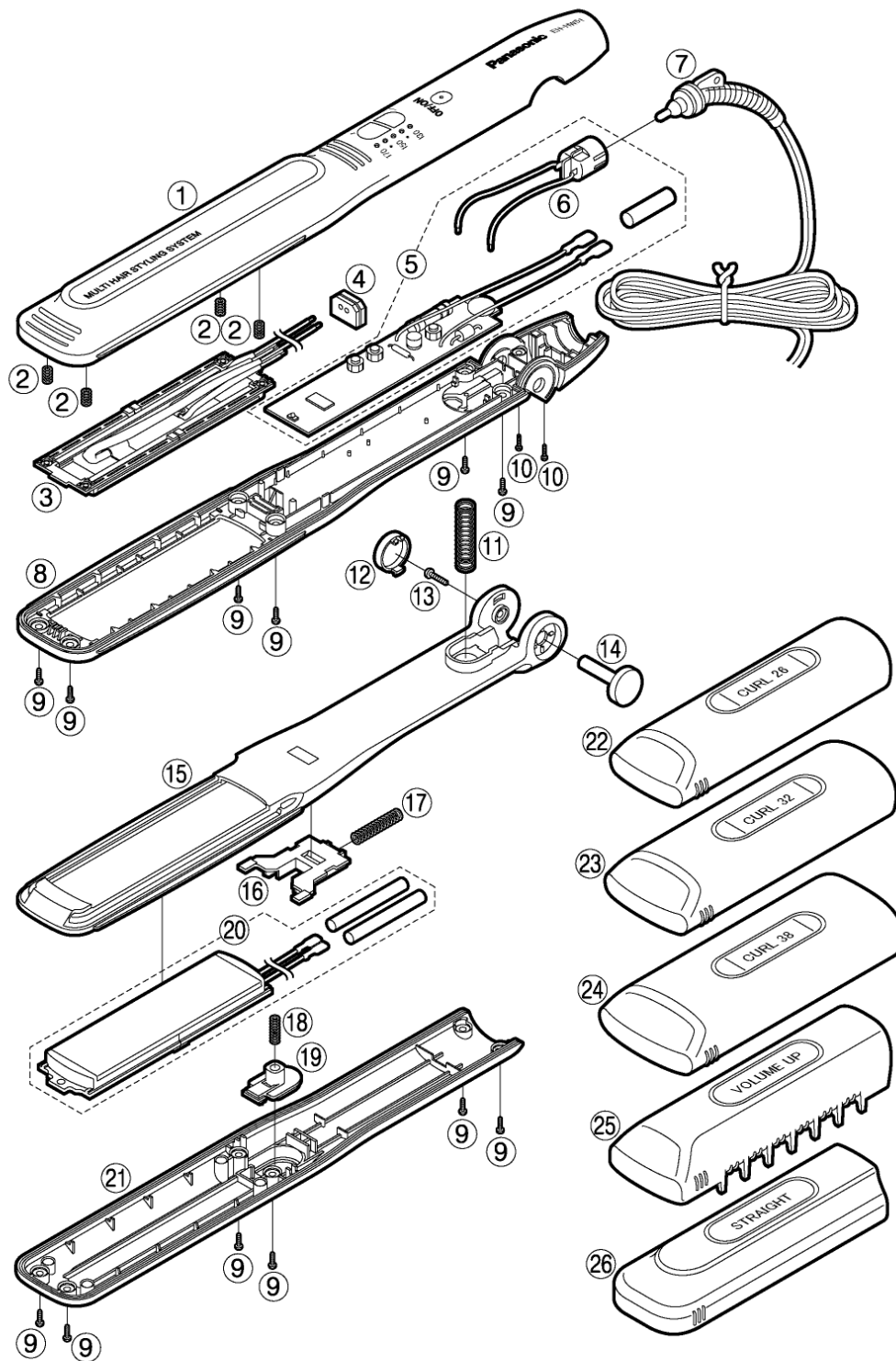


RMKS : \*1 Individual Available  
 All parts are supplied from PEW-Thailand through PLGA

## Model No. : EH-HW32 Parts List

Safety	Ref. No.	Part No.	Part Name & Description	Q'ty	Remarks
EH-HW32					
	1	EHHW32HSABW	HOUSING A ASSEMBLY BLOCK	1	
	2	EHHW32FSW	FLOATING SPRING	4	*1
	3	EHHW32HABW	HEATER A ASSEMBLY BLOCK	1	
	4	EHHW32PKW	PACKING	1	
	5	EHHW32CCAW	CIRCUIT ASSEMBLY BLOCK	1	(INCLUDE 1 INSULATION TUBE, CONNECTOR COVER BLOCK)
	6	EHHW32CTBW	CONNECTOR COVER BLOCK	1	
	7	EHHW32PCB2W	POWER CORD	1	B2-PLUG
	7	EHHW32PC7B2W	POWER CORD	1	B2-PLUG, KOREA
	7	EHHW32PCS3W	POWER CORD	1	S3-PLUG
	8	EHHW32HSBBW	HOUSING B	1	OTHERS
	8	EHHW32HSBB6W	HOUSING B	1	SAUDI ARABIA
	8	EHHW32HSBB7W	HOUSING B	1	KOREA
	9	EHHW32T2606W	TAPPING SCREW 2.6*6	12	*1
	10	EHHW32T2060W	TAPPING SCREW 2.0*6	2	*1
	11	EHHW32PSSW	PIVOT SPRING	1	
	12	EHHW32SCBW	SHAFT COVER	1	
	13	EHHW32T3012W	TORX SCREW 3.0*12	1	
	14	EHHW32SHBW	SHAFT	1	
	15	EHHW32PPBW	PRESS PLATE	1	
	16	EHHW32SPBW	SLIDE PLATE	1	
	17	EHHW32SSW	SLIDE SPRING	1	
	18	EHHW32LBSW	LOCK BUTTON SPRING	1	
	19	EHHW32LBBW	LOCK BUTTON	1	
	20	EHHW32HBBW	HEATER B ASSEMBLY BLOCK	1	(INCLUDE 2 INSULATION TUBES)
	21	EHHW32PPCBW	PRESS PLATE COVER	1	(INCLUDE 1 ALUMINUM SEAL), OTHERS
	21	EHHW32PPCB7W	PRESS PLATE COVER	1	(INCLUDE 1 ALUMINUM SEAL), KOREA
	22	EHHW32C26BW	CURL 26 ATTACHMENT	1	
	23	EHHW32C32BW	CURL 32 ATTACHMENT	1	
	24	EHHW32STBW	STRAIGHT ATTACHMENT	1	
	-	EHHW3261501W	INDIVIDUAL PACKAGE	1	(FOR EH-HW32-K615)
	-	EHHW3266501W	INDIVIDUAL PACKAGE	1	(FOR EH-HW32-K655)
	-	EHHW3267501W	INDIVIDUAL PACKAGE	1	(FOR EH-HW32-K675)
	-	EHHW3268501W	INDIVIDUAL PACKAGE	1	(FOR EH-HW32-K685)
	-	EHHW32S09W	PULP FILLER	1	
	-	EHHW32S03W	INSTRUCTION BOOKLET	1	
	-	EHHW32S04W	EASY MANUAL	1	

Model No. : EH-HW51 Exploded View for EH-HW51



RMKS : \*1 Individual Available  
All parts are supplied from PEW-Thailand through PLGA

## Model No. : EH-HW51 Parts List

Safety	Ref. No.	Part No.	Part Name & Description	Q'ty	Remarks
EH-HW51					
	1	EHHW51HSABW	HOUSING A ASSEMBLY BLOCK	1	
	2	EHHW51FSW	FLOATING SPRING	4	*1
	3	EHHW51HABW	HEATER A ASSEMBLY BLOCK	1	
	4	EHHW51PKW	PACKING	1	
	5	EHHW51CCAW	CIRCUIT ASSEMBLY BLOCK	1	(INCLUDE 1 INSULATION TUBE,CONNECTOR COVER BLOCK)
	6	EHHW51CTBW	CONNECTOR COVER BLOCK	1	
	7	EHHW51PCA2W	POWER CORD	1	A2-PLUG, TAIWAN
	7	EHHW51PCB2W	POWER CORD	1	B2-PLUG
	7	EHHW51PCS3W	POWER CORD	1	S3-PLUG
	8	EHHW51HSBB1W	HOUSING B	1	TAIWAN
	8	EHHW51HSBBW	HOUSING B	1	OTHERS
	8	EHHW51HSBB6W	HOUSING B	1	SAUDI ARABIA
	9	EHHW51T2606W	TAPPING SCREW 2.6*6	12	*1
	10	EHHW51T2060W	TAPPING SCREW 2.0*6	2	*1
	11	EHHW51PSSW	PIVOT SPRING	1	
	12	EHHW51SCBW	SHAFT COVER	1	
	13	EHHW51T3012W	TORX SCREW 3.0*12	1	
	14	EHHW51SHBW	SHAFT	1	
	15	EHHW51PPBW	PRESS PLATE	1	
	16	EHHW51SPBW	SLIDE PLATE	1	
	17	EHHW51SSW	SLIDE SPRING	1	
	18	EHHW51LBSW	LOCK BUTTON SPRING	1	
	19	EHHW51LBBW	LOCK BUTTON	1	
	20	EHHW51HBBW	HEATER B ASSEMBLY BLOCK	1	(INCLUDE 2 INSULATION TUBES)
	21	EHHW51PPCB1W	PRESS PLATE COVER	1	(INCLUDE 1 ALUMINUM SEAL), TAIWAN
	21	EHHW51PPCBW	PRESS PLATE COVER	1	(INCLUDE 1 ALUMINUM SEAL), OTHERS
	22	EHHW51C26BW	CURL 26 ATTACHMENT	1	
	23	EHHW51C32BW	CURL 32 ATTACHMENT	1	
	24	EHHW51C38BW	CURL 38 ATTACHMENT	1	
	25	EHHW51VLBW	VOLUME UP ATTACHMENT	1	
	26	EHHW51STBW	STRAIGHT ATTACHMENT	1	
	-	EHHW5113501W	INDIVIDUAL PACKAGE	1	(FOR EH-HW51-K135)
	-	EHHW5161501W	INDIVIDUAL PACKAGE	1	(FOR EH-HW51-K615)
	-	EHHW5165501W	INDIVIDUAL PACKAGE	1	(FOR EH-HW51-K655)
	-	EHHW5166501W	INDIVIDUAL PACKAGE	1	(FOR EH-HW51-K665)
	-	EHHW5168501W	INDIVIDUAL PACKAGE	1	(FOR EH-HW51-K685)
	-	EHHW51S09W	PULP FILLER	1	
	-	EHHW5113503W	INSTRUCTION BOOKLET	1	TAIWAN
	-	EHHW51S03W	INSTRUCTION BOOKLET	1	OTHERS
	-	EHHW51S04W	EASY MANUAL	1	