

Service Manual

Compact Multi Straightener

Model No. **EH-HW17**

Asia



⚠ WARNING

This service information is designed for experienced repair technicians only and is not designed for use by the general public. It does not contain warnings or cautions to advise non-technical individuals of potential dangers in attempting to service a product. Products powered by electricity should be serviced or repaired only by experienced professional technicians. Any attempt to service or repair the product or products dealt with in this service information by anyone else could result in serious injury or death.

IMPORTANT SAFETY NOTICE

There are special components used in this equipment which are important for safety. These parts are marked by **⚠** in the Schematic Diagrams, Circuit Board Diagrams, Exploded Views and Replacement Parts List. It is essential that these critical parts should be replaced with manufacturer's specified parts to prevent shock, fire or other hazards. Do not modify the original design without permission of manufacturer.

TABLE OF CONTENTS

	PAGE	PAGE
1 Warning -----	2	
2 Specifications -----	2	
3 Troubleshooting Guide -----	3	
4 Disassembly and Assembly Instructions -----	4	
4.1. Disassembly Instructions-----	4	
4.2. Assembly Instructions-----	6	
5 Wiring Connection Diagram -----	7	
6 Schematic Diagram -----	8	
7 Exploded View and Replacement Parts List -----	9	
7.1. Exploded View-----	9	
7.2. Replacement Parts List-----	10	

1 Warning

Caution:

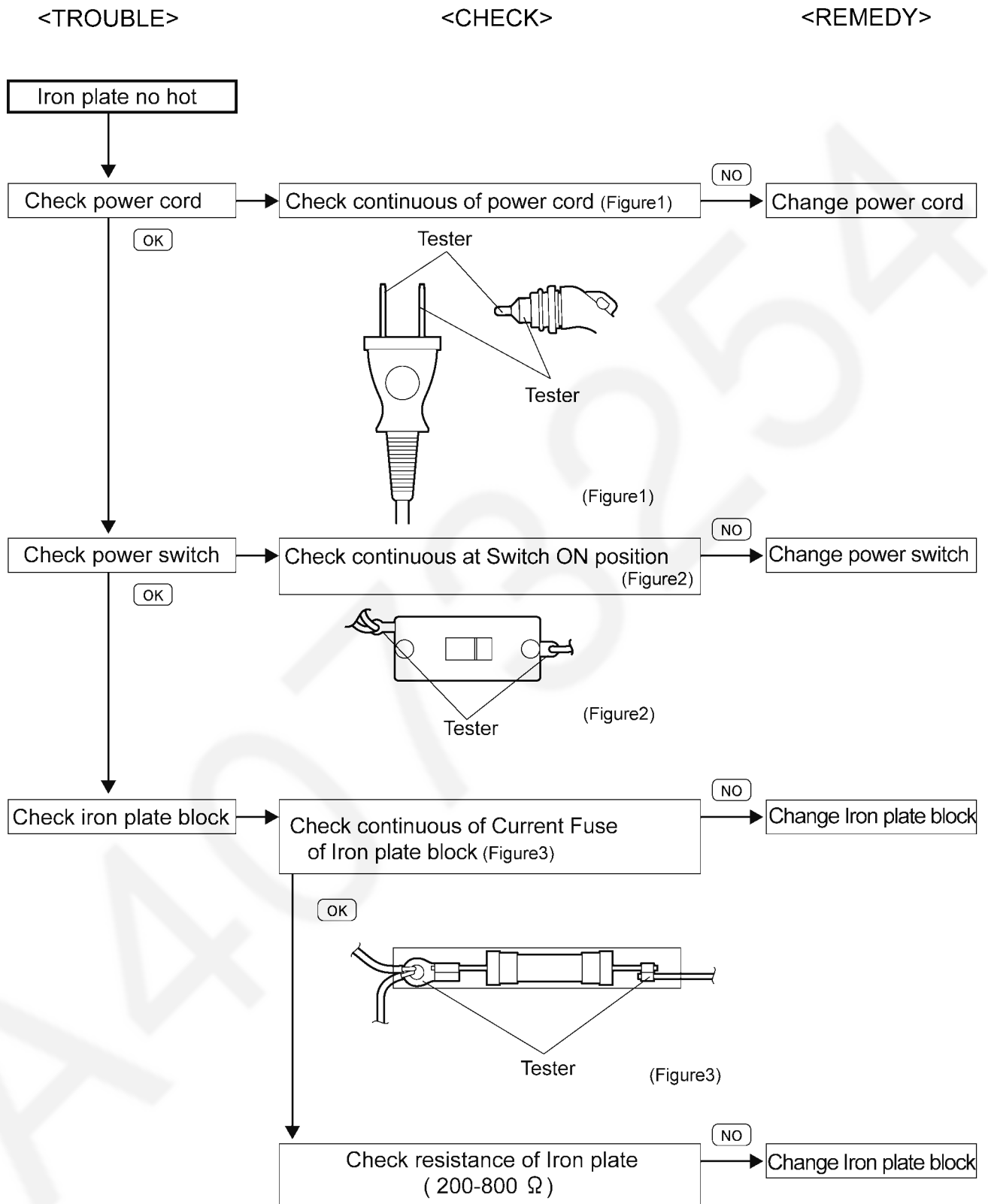
- Pb free solder has a higher melting point than standard solder. Typically the melting point is 50 - 70°F (30 - 40°C) higher. Please use soldering iron with temperature control and adjust it to 750 ± 20°F (400 ± 10°C). In case of using high temperature soldering iron, please be careful not to heat too long.
- Pb free solder will tend to splash when heated too high (about 1100°F / 600°C).

2 Specifications

Sales Area		Asia	
Power source		AC100-240V, 50-60Hz	
Power consumption		22 W	
Iron Plate temperature		200 °C	
Body size (mm.)		Without Cap	230×28×32
		With Cap	235 x 35 x 39
Weight	S3 Plug (SF629/UK13A3)	Without Cap	322 g
		With Cap	352 g
	B2 Plug (SF82/M3204)	Without Cap	271 g
		With Cap	301 g
	B2 Plug (SF822)	Without Cap	260 g
		With Cap	290 g
	A2 Plug (LM-201-9)	Without Cap	257 g
		With Cap	287 g
Cord length		S3(SF629/UK13A3) Plug	1.7 m
		B2(SF82/M3204) Plug	1.7 m
		B2(SF822) Plug	1.7 m
		A2(LM-201-9) Plug	1.7 m

3 Troubleshooting Guide

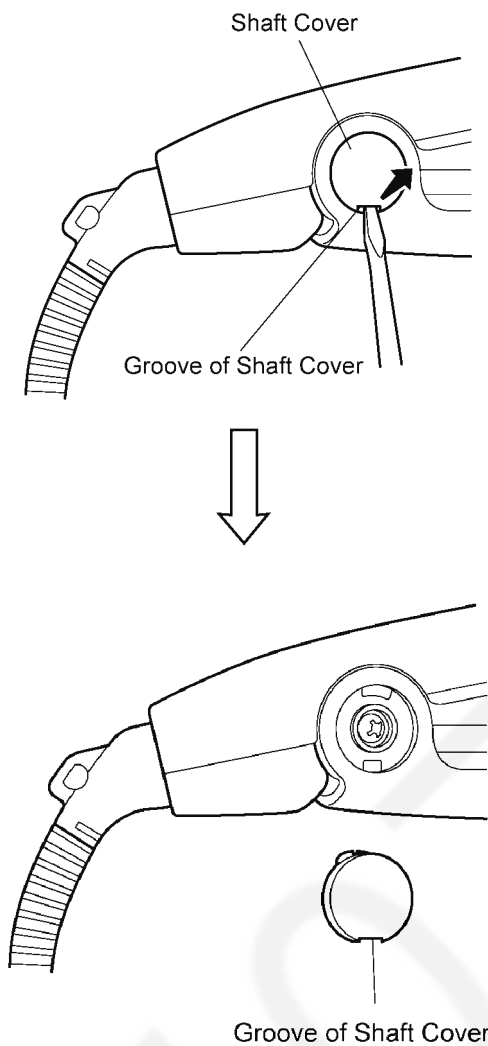
(Refer to SCHEMATIC DIAGRAM)



4 Disassembly and Assembly Instructions

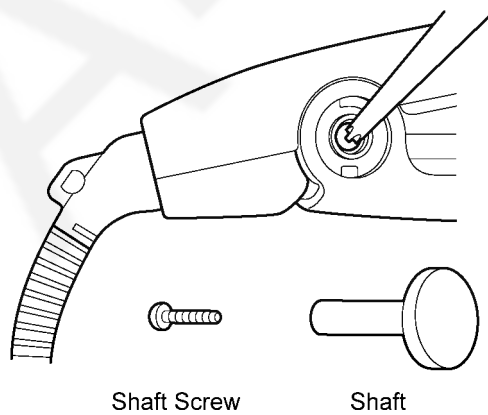
4.1. Disassembly Instructions

1. Insert a small flat head screwdriver into the Groove of the Shaft Cover as shown in Figure 4.

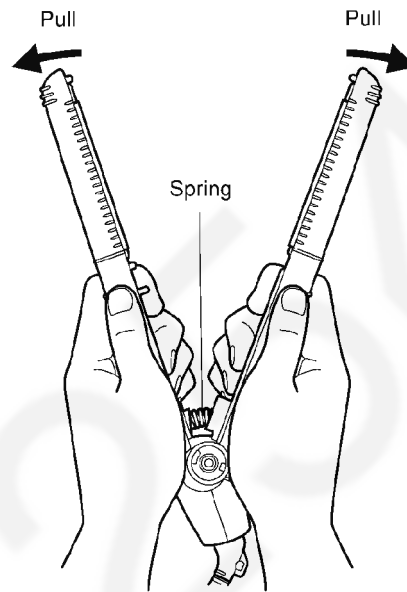


(Figure 4)

2. Remove the Shaft screw and take off the Shaft from Main body as shown in Figure 5.

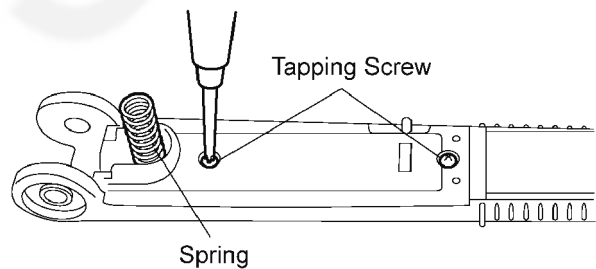


3. Remove the spring by pull out of the Housing side and Press plate side as shown in Figure 6.



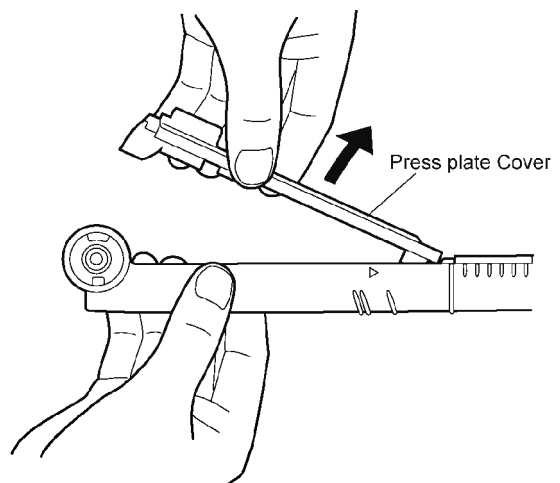
(Figure 6)

4. Remove the two tapping screws from the Press Plate Cover as shown in Figure 7.
Be careful not to lose the spring.



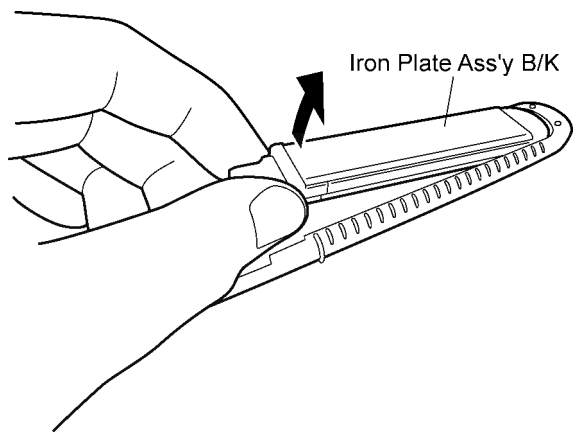
(Figure 7)

5. Take off the Press Plate Cover as shown in Figure 8.



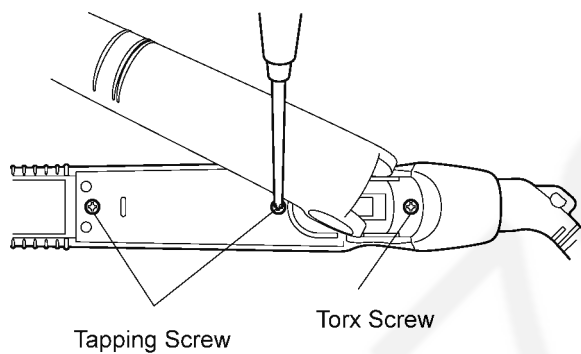
(Figure 8)

6. Remove the Iron Plate Ass'y B/K of Press Plate side as shown in Figure 9.



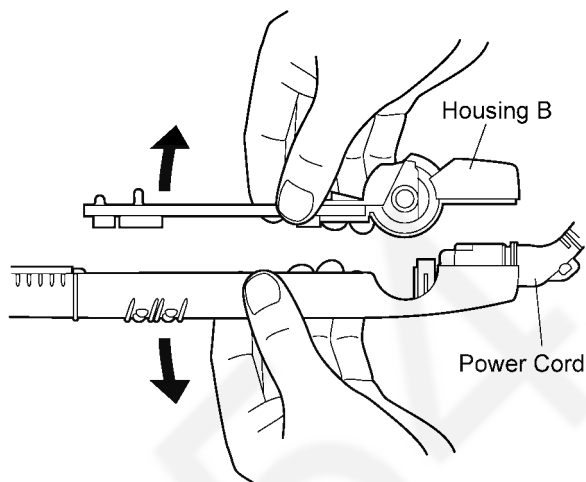
(Figure 9)

7. Remove the 2 tapping screws and 1 torx screw as shown in Figure 10.



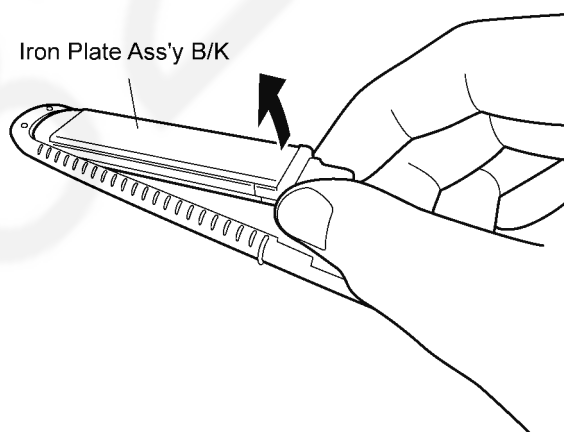
(Figure 10)

8. Take off the Housing B as shown in Figure 11.



(Figure 11)

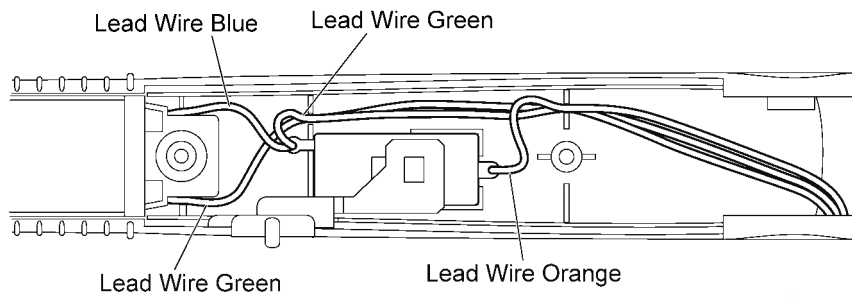
9. Remove the Iron Plate Ass'y B/K of the Housing side as shown in Figure 12.



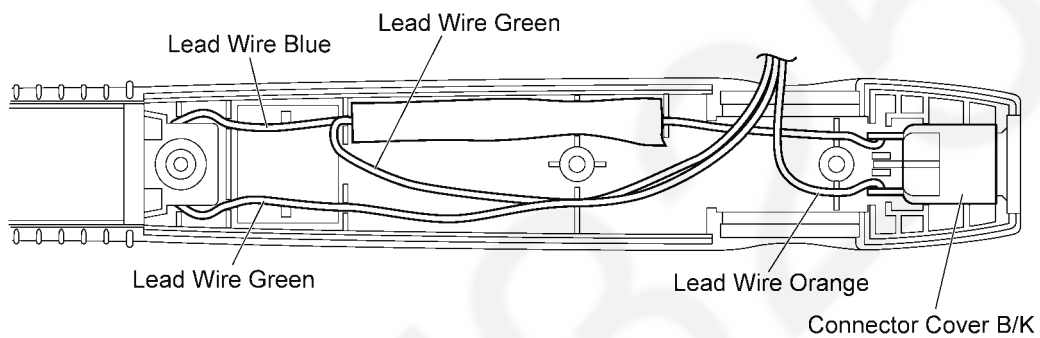
(Figure 12)

4.2. Assembly Instructions

1. Arrange Lead wire into rib of the Press Plate.

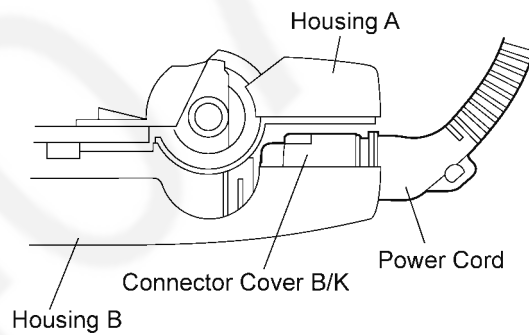


2. Arrange Lead wire into rib of the Housing A.

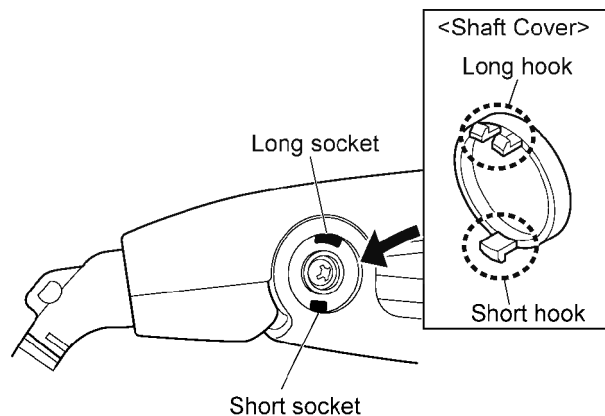


3. Assembly Housing B together with the Housing A.

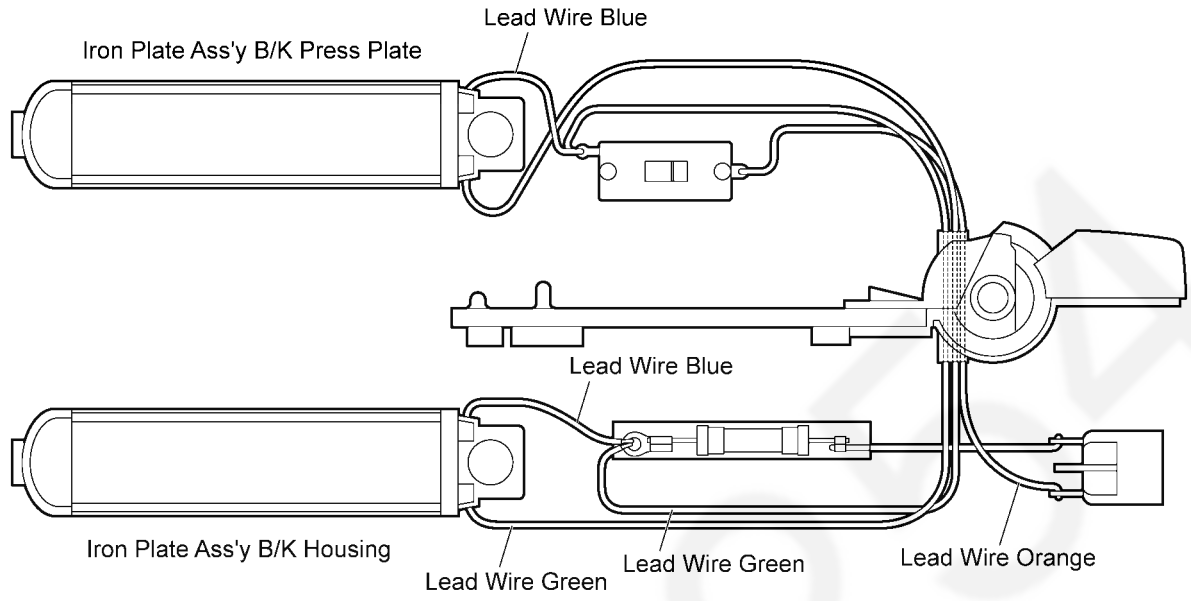
- Ensure that the Power Cord is attached to the Connector Cover.
- (Apply grease foil at the Power Cord terminal)



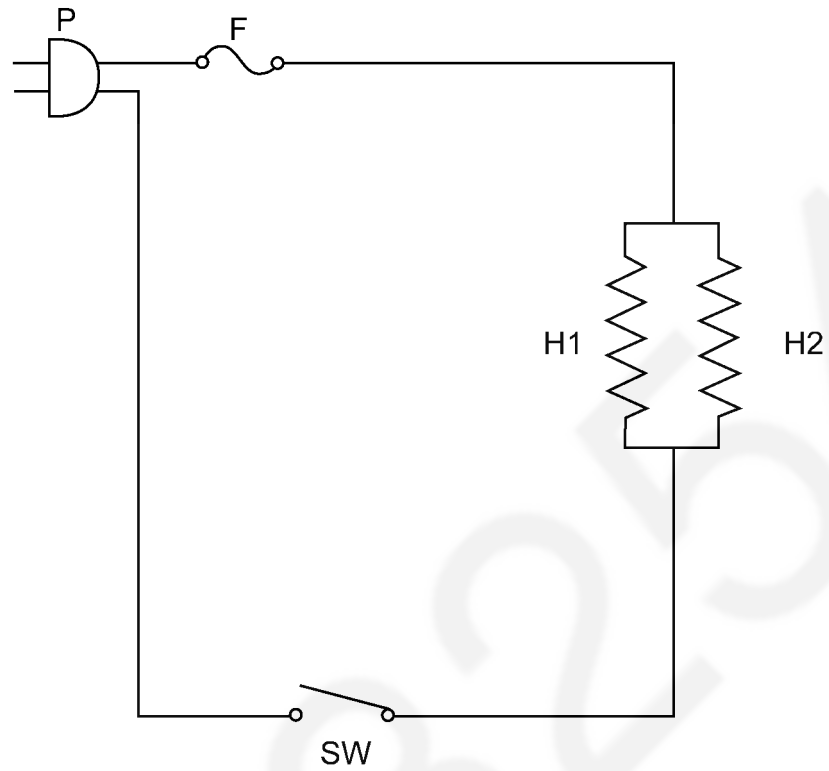
4. Fixing Shaft Cover follow hook direction.



5 Wiring Connection Diagram

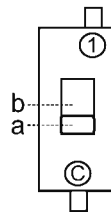


6 Schematic Diagram



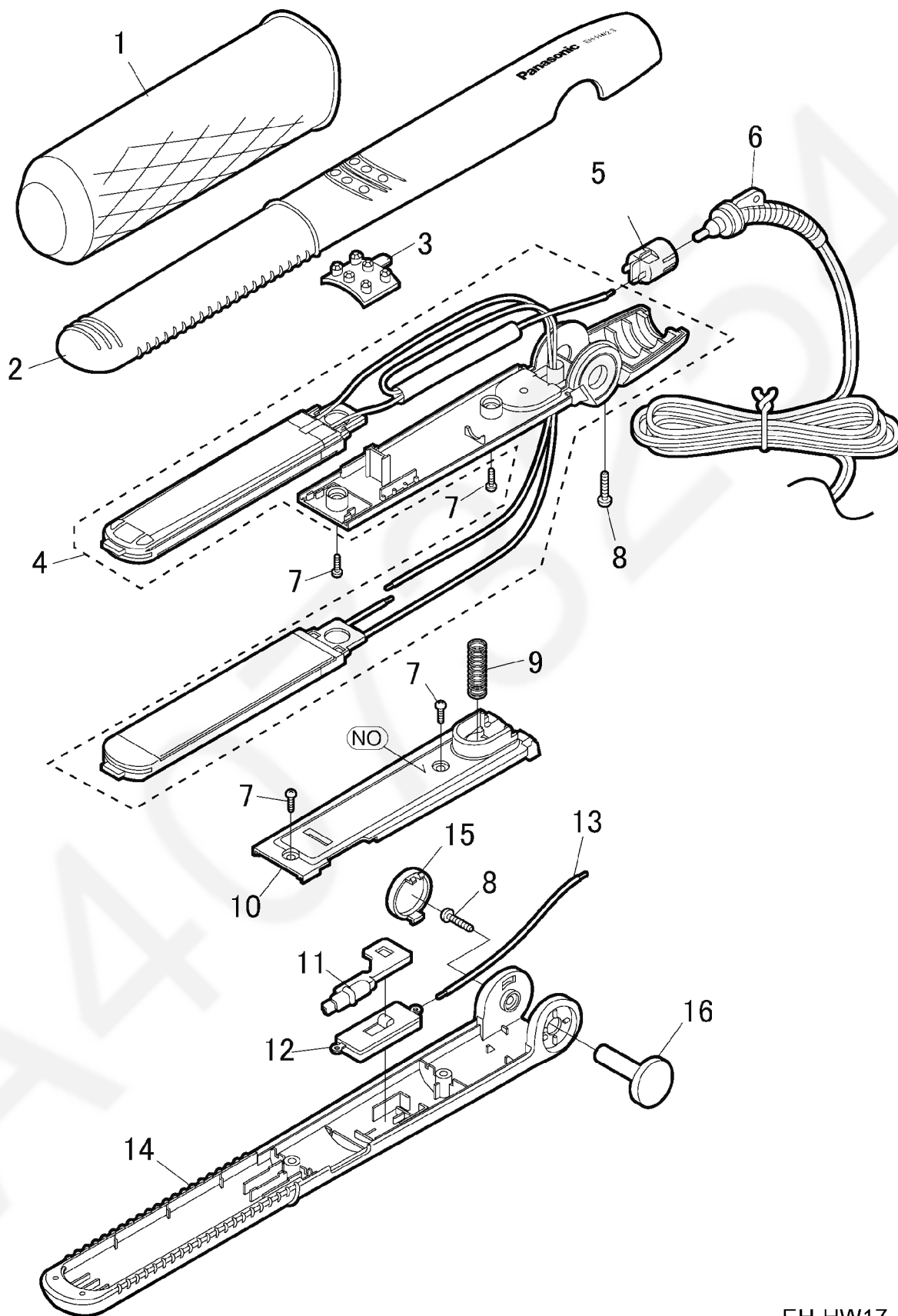
F	Current Fuse	250V, 5A	1
H1, H2	PTC Heating Element	200 ~ 800 ohm	1
SW	Main Switch	11A,125VAC / 5.5A,250VAC	1
P	Power Cord		

	a	b
C-1	OFF	ON



7 Exploded View and Replacement Parts List

7.1. Exploded View



EH-HW17

All parts are supplied from PMFTH-AP through PLAP

7.2. Replacement Parts List

EH-HW17(Asia)

Safety	Ref. No.	Part No.	Part Name & Description	Q'ty	Remarks
	1	EHHW17CBW	CAP (BLACK)	1	
	1	EHHW17CPW	CAP (PINK)	1	
	1	EHHW17CWW	CAP (WHITE)	1	
	2	EHHW17HSABW	HOUSING A (BLACK)	1	
	2	EHHW17HSAPW	HOUSING A (PINK)	1	
	2	EHHW17HSAWW	HOUSING A (WHITE)	1	
	3	EHHW17STYW	STONE (YELLOW)	1	(FOR BLACK COLOR)
	3	EHHW17STPW	STONE (PINK)	1	(FOR PINK COLOR)
	3	EHHW17STVW	STONE (VIOLET)	1	(FOR WHITE COLOR)
	4	EHHW17IP41BW	IRON PLATE (BLACK)	1	(FOR INDONESIA)
	4	EHHW17IPBW	IRON PLATE (BLACK)	1	(FOR OTHERS)
	4	EHHW17IP64BW	IRON PLATE (BLACK)	1	(FOR VIETNAM)
	4	EHHW17IP66BW	IRON PLATE (BLACK)	1	(FOR SAUDI ARABIA)
	4	EHHW17IP69BW	IRON PLATE (BLACK)	1	(FOR KUWAIT, QATAR)
	4	EHHW17IP13PW	IRON PLATE (PINK)	1	(FOR TAIWAN)
	4	EHHW17IP41PW	IRON PLATE (PINK)	1	(FOR INDONESIA)
	4	EHHW17IPPW	IRON PLATE (PINK)	1	(FOR OTHERS)
	4	EHHW17IP64PW	IRON PLATE (PINK)	1	(FOR VIETNAM)
	4	EHHW17IP66PW	IRON PLATE (PINK)	1	(FOR SAUDI ARABIA)
	4	EHHW17IP69PW	IRON PLATE (PINK)	1	(FOR KUWAIT, QATAR)
	4	EHHW17IP13WW	IRON PLATE (WHITE)	1	(FOR TAIWAN)
	4	EHHW17IP41WW	IRON PLATE (WHITE)	1	(FOR INDONESIA)
	4	EHHW17IPWW	IRON PLATE (WHITE)	1	(FOR OTHERS)
	4	EHHW17IP64WW	IRON PLATE (WHITE)	1	(FOR VIETNAM)
	4	EHHW17IP66WW	IRON PLATE (WHITE)	1	(FOR SAUDI ARABIA)
	4	EHHW17IP69WW	IRON PLATE (WHITE)	1	(FOR KUWAIT, QATAR)
	5	EHHW17CTBW	CONNECTOR COVER BLOCK	1	
	6	EHHW17PCB2BW	POWER CORD (BLACK)	1	(B2-PLUG)
	6	EHHW17PCS3BW	POWER CORD (BLACK)	1	(S3-PLUG)
	6	EHHW17PCA2HW	POWER CORD (GRAY)	1	(FOR PINK AND WHITE COLOR, A2-PLUG)
	6	EHHW17PCB2HW	POWER CORD (GRAY)	1	(FOR PINK AND WHITE COLOR, B2-PLUG)
	6	EHHW17PCS3HW	POWER CORD (GRAY)	1	(FOR PINK AND WHITE COLOR, S3-PLUG)
	7	EHHW172608BW	TAPPING SCREW 2.6*8 (BLACK)	4	*1
	7	EHHW172608SW	TAPPING SCREW 2.6*8 (SILVER)	4	*1
	8	EHHW173010BW	TORX SCREW 3*10 (BLACK)	2	*1
	8	EHHW173010SW	TORX SCREW 3*10 (SILVER)	2	*1
	9	EHHW17PSW	PIVOT SPRING	1	
	10	EHHW17PPCBW	PRESS PLATE COVER (BLACK)	1	
	10	EHHW17PPCPW	PRESS PLATE COVER (PINK)	1	
	10	EHHW17PPCWW	PRESS PLATE COVER (WHITE)	1	
	11	EHHW17SPBW	SWITCH PLATE (BLACK)	1	
	11	EHHW17SPPW	SWITCH PLATE (PINK)	1	
	11	EHHW17SPWW	SWITCH PLATE (WHITE)	1	
	12	EHHW17MSW	MAIN SWITCH	1	
	13	EHHW17LWA2W	LEAD WIRE (ORANGE)	1	
	14	EHHW17PP41BW	PRESS PLATE (BLACK)	1	(FOR INDONESIA)
	14	EHHW17PPBW	PRESS PLATE (BLACK)	1	(FOR OTHERS)
	14	EHHW17PP13PW	PRESS PLATE (PINK)	1	(FOR TAIWAN)
	14	EHHW17PP41PW	PRESS PLATE (PINK)	1	(FOR INDONESIA)
	14	EHHW17PPPW	PRESS PLATE (PINK)	1	(FOR OTHERS)
	14	EHHW17PP13WW	PRESS PLATE (WHITE)	1	(FOR TAIWAN)
	14	EHHW17PP41WW	PRESS PLATE (WHITE)	1	(FOR INDONESIA)
	14	EHHW17PPWW	PRESS PLATE (WHITE)	1	(FOR OTHERS)
	15	EHHW17SCBW	SHAFT COVER (BLACK)	1	
	15	EHHW17SCPW	SHAFT COVER (PINK)	1	
	15	EHHW17SCWW	SHAFT COVER (WHITE)	1	
	16	EHHW17SHBW	SHAFT (BLACK)	1	
	16	EHHW17SHPW	SHAFT (PINK)	1	
	16	EHHW17SHWW	SHAFT (WHITE)	1	
	-	EHHW1741503W	OPERATING INSTRUCTION	1	(FOR INDONESIA ONLY)
	-	EHHW17S03UW	OPERATING INSTRUCTION	1	
	-	EHHW17S415KW	INDIVIDUAL PACKAGE	1	(FOR BLACK, -K415 : INDONESIA)
	-	EHHW17S615KW	INDIVIDUAL PACKAGE	1	(FOR BLACK, -K615 : OMAN)
	-	EHHW17S01KW	INDIVIDUAL PACKAGE	1	(FOR BLACK, -K615I : INDIA)
	-	EHHW17S645KW	INDIVIDUAL PACKAGE	1	(FOR BLACK, -K645 : VIETNAM)
	-	EHHW17S655KW	INDIVIDUAL PACKAGE	1	(FOR BLACK, -K655 : MALAYSIA)
	-	EHHW17S665KW	INDIVIDUAL PACKAGE	1	(FOR BLACK, -K665 : SAUDI ARABIA)
	-	EHHW17S685KW	INDIVIDUAL PACKAGE	1	(FOR BLACK, -K685 : M. EAST)
	-	EHHW17S695KW	INDIVIDUAL PACKAGE	1	(FOR BLACK, -K695 : KUWAIT/QATAR)

Safety	Ref. No.	Part No.	Part Name & Description	Q'ty	Remarks
	-	EHHW17S135PW	INDIVIDUAL PACKAGE	1	(FOR PINK,-P135 : TAIWAN)
	-	EHHW17S415PW	INDIVIDUAL PACKAGE	1	(FOR PINK,-P415 : INDONESIA)
	-	EHHW17S615PW	INDIVIDUAL PACKAGE	1	(FOR PINK,-P615 : OMAN)
	-	EHHW17S01IPW	INDIVIDUAL PACKAGE	1	(FOR PINK,P615I : INDIA)
	-	EHHW17S645PW	INDIVIDUAL PACKAGE	1	(FOR PINK,-P645 : VIETNAM)
	-	EHHW17S655PW	INDIVIDUAL PACKAGE	1	(FOR PINK,-P655 : MALAYSIA)
	-	EHHW17S665PW	INDIVIDUAL PACKAGE	1	(FOR PINK,-P665 : SAUDI ARABIA)
	-	EHHW17S685PW	INDIVIDUAL PACKAGE	1	(FOR PINK,-P685 : M.EAST)
	-	EHHW17S695PW	INDIVIDUAL PACKAGE	1	(FOR PINK,-P695 : KUWAIT/QATAR)
	-	EHHW17S135WW	INDIVIDUAL PACKAGE	1	(FOR WHITE,-W135 : TAIWAN)
	-	EHHW17S415WW	INDIVIDUAL PACKAGE	1	(FOR WHITE,-W415 : INDONESIA)
	-	EHHW17S615WW	INDIVIDUAL PACKAGE	1	(FOR WHITE,-W615 : OMAN)
	-	EHHW17S01IWW	INDIVIDUAL PACKAGE	1	(FOR WHITE,W615I : INDIA)
	-	EHHW17S645WW	INDIVIDUAL PACKAGE	1	(FOR WHITE,-W645 : VIETNAM)
	-	EHHW17S655WW	INDIVIDUAL PACKAGE	1	(FOR WHITE,-W655 : MALAYSIA)
	-	EHHW17S665WW	INDIVIDUAL PACKAGE	1	(FOR WHITE,-W665 : SAUDI ARABIA)
	-	EHHW17S685WW	INDIVIDUAL PACKAGE	1	(FOR WHITE,-W685 : M.EAST)
	-	EHHW17S695WW	INDIVIDUAL PACKAGE	1	(FOR WHITE,-W695 : KUWAIT/QATAR)
	-	EHHW17S04UW	EASY MANUAL	1	

Remarks : *1 Individual Available