

Service Manual

AC/Rechargeable Shaver

ES8196-H3



Please file and use this manual together with the service manual for Model No. ES8176, Order No. SD0412A31C3.

SPECIFICATIONS

Power source	AC 100-240V, 50-60Hz (Automatic voltage conversion)
Power consumption	Approx. 7W (at AC drive)
Motor voltage	3.6V DC
Charging time	1 hours
Shavers per charge	14 times (3 minutes shave)
Measurement	(H)15.3 x (W)6.2 x (D)4.6 cm
Weight	180g (without protective cap)
Supplied accessories	Soft case Cleaning brush Charging stand Self-clean recharger

WARNING

This service information is designed for experienced repair technicians only and is not designed for use by the general public. It does not contain warnings or cautions to advise non-technical individuals of potential dangers in attempting to service a product. Products powered by electricity should be serviced or repaired only by experienced professional technicians. Any attempt to service or repair the product or products dealt with in this service information by anyone else could result in serious injury or death.

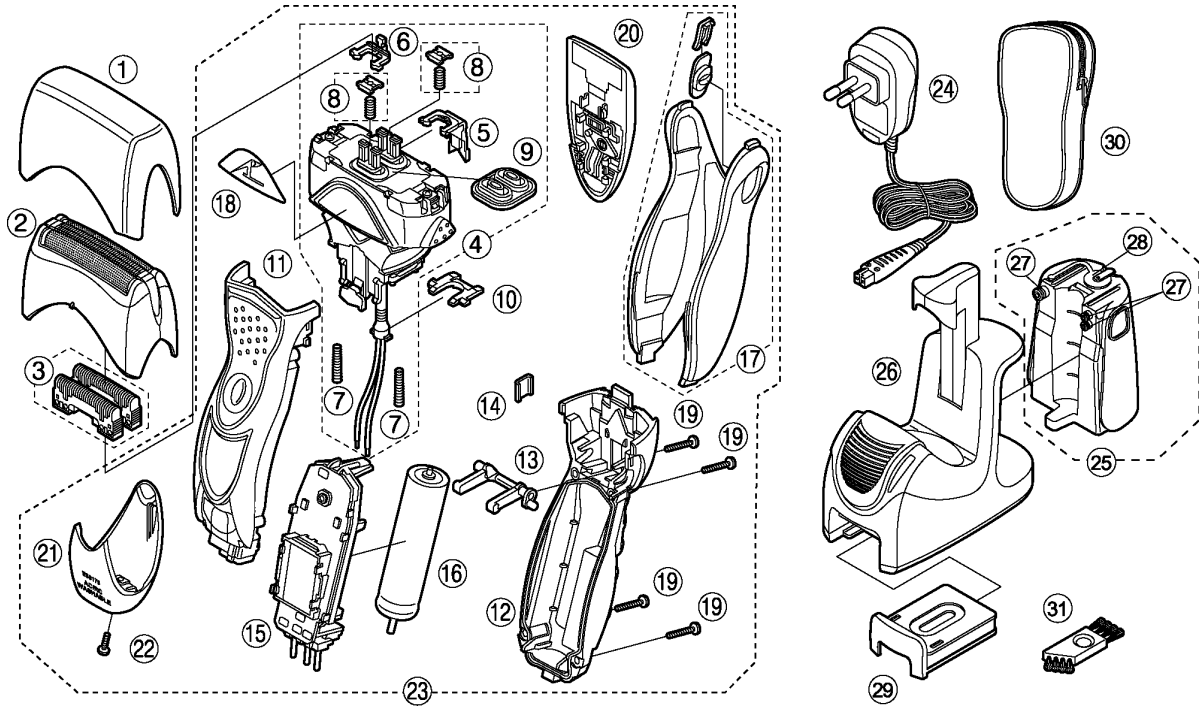
CONTENTS

	Page		Page
1 EXPLODED VIEW	2	2 REPLACEMENT PARTS LIST	2

Panasonic

© 2006 Matsushita Electric Works, Ltd. All rights reserved. Unauthorized copying and distribution is a violation of law.

1 EXPLODED VIEW



2 REPLACEMENT PARTS LIST

NOTE:

*A=available as an optional accessory

*B=only available as set

*C=available individually

Ref. No.	Parts No.	Parts Name & Descriptions	Remarks	Per Unit
1	WES8176X7158	PROTECTIVE CAP		1
2	WES9065E	OUTER FOIL		1
3	WES9066E	INNER BLADE	*B (2PCS/PK)	1ST
4	WES8196L1007	LINEAR MOTOR ASSEMBLY		1
5	WES8176L1087	TRIMMER DRIVING BAR		1
6	WES8176L1077	SLIT BLADE DRIVING BAR		1
7	WES8176L0227	FLOAT SPRING	*B (2PCS/PK)	2
8	WES8176L0587	SPRING AND STOPPER	*B (2SETS/PK)	2
9	WES8196L0328	WATERPROOF RUBBER		1
10	WES8176L0207	TUBE HOLDER		1
11	WES8196S3058	HOUSING A		1
12	WES8196S3068	HOUSING B		1
13	WES8176L1157	LOCK LEVER SHAFT		1
14	WES8176L0167	HOUSING CLIP		1
15	WES8196L2127	MODULE		1
16	WES8176L2509	RECHARGEABLE BATTERY	LITHIUM-ION TYPE	1
17	WES8196H3367	REAR PANEL		1
18	WES8196N3347	LOGO PLATE		1
19	WES8176L6007	P TIGHT SCREW	*C M2-12	4
20	WES8196H1507	TRIMMER		1
21	WES8196S3848	BOTTOM COVER		1
22	WES8176L6057	TAPPING SCREW	M2*8	1
23	WES8196S3038	BODY BLOCK		1
24	WES8176K7663	CHARGING ADAPTOR	C-2 PLUG	1
25	WES8176A7357	WATER TANK		1
26	WES8167H4218	SELF-CLEANING RECHARGER		1
27	WES8176L0967	O-RING FOR WATER TANK		1ST
28	WES8176H3657	TANK CAP		1
29	WES035K7778	DETERGENT CARTRIDGE	*B (3PACKS/BOX)	1
30	WES8176K7017	SOFT CASE		1
31	WES8093H7057	CLEANING BRUSH		1
-	WES8196S8008	INDIVIDUAL BOX		1
-	WES8196S8108	OPERATING INSTRUCTIONS		1