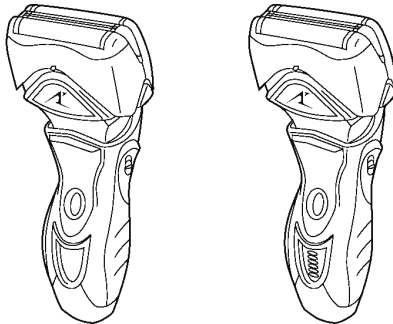


Service Manual

Wet/Dry Rechargeable Shaver

ES8162-U1

ES8164-U1



Please file and use this manual together with the service manual for Model No. ES8163, Order No. SD0411U59C1.

SPECIFICATIONS

Power source	AC 100-240V, 50-60Hz (Automatic voltage conversion)
Power consumption	DC5V 1A
Charging time	1 Hour
Shaves per charge	14 times (3 minutes shave)
Measurement	(H)15.3 x (W)6.2 x (D)4.6 cm
Weight	180g (without protective cap)
Supplied accessories	Soft case Charging stand

WARNING

This service information is designed for experienced repair technicians only and is not designed for use by the general public. It does not contain warnings or cautions to advise non-technical individuals of potential dangers in attempting to service a product. Products powered by electricity should be serviced or repaired only by experienced professional technicians. Any attempt to service or repair the product or products dealt with in this service information by anyone else could result in serious injury or death.

CONTENTS

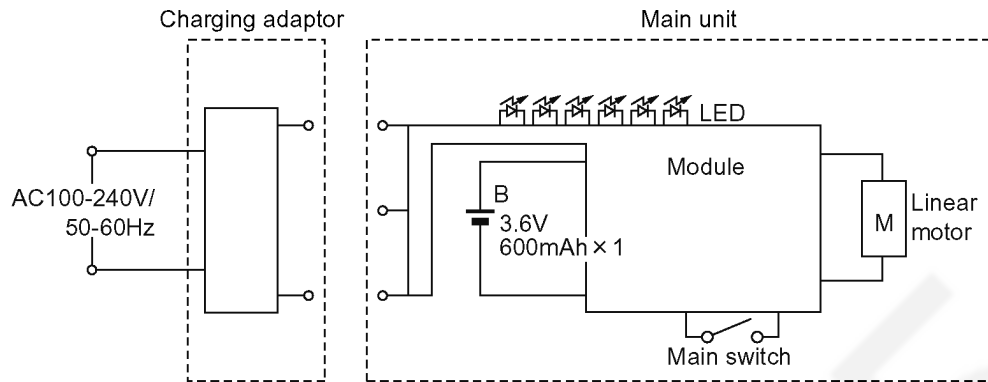
	Page	Page	
1 SCHEMATIC DIAGRAM	2	2 EXPLODED VIEW & REPLACEMENT PARTS LIST	3

Panasonic®

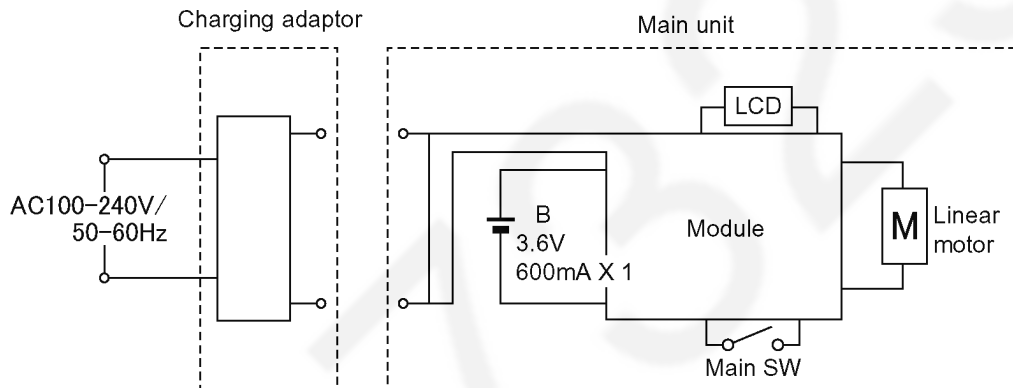
© 2005 Matsushita Electric Works, Ltd. All rights reserved. Unauthorized copying and distribution is a violation of law.

1 SCHEMATIC DIAGRAM

1.1. ES8162

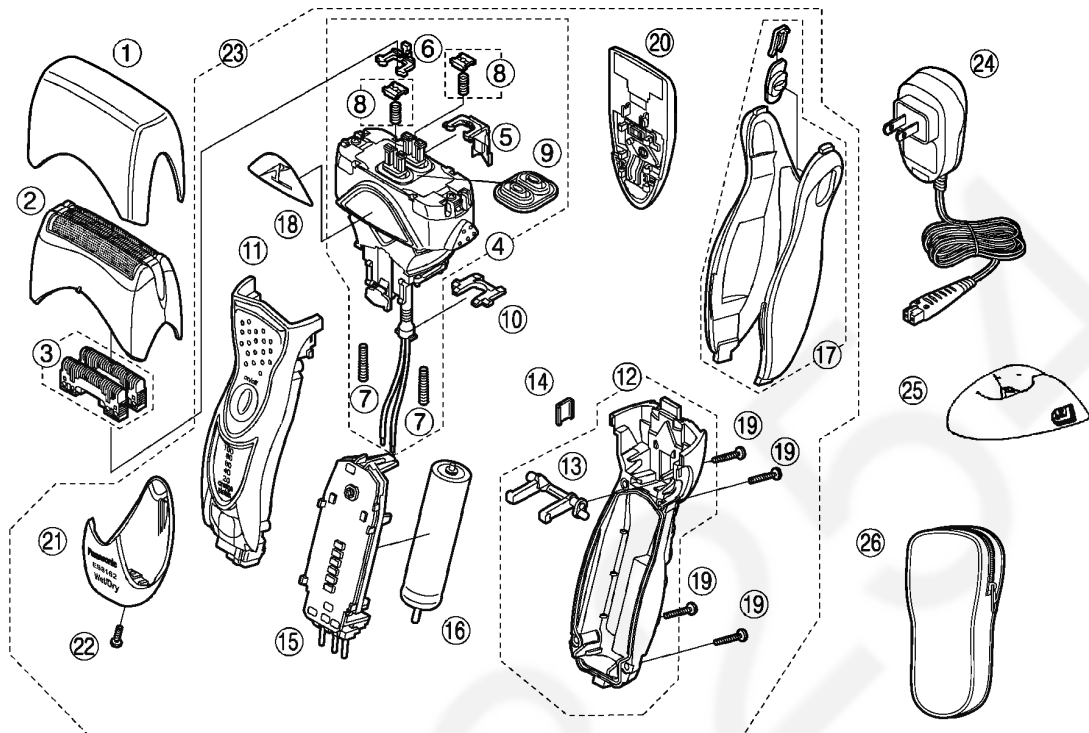


1.2. ES8164



2 EXPLODED VIEW & REPLACEMENT PARTS LIST

2.1. ES8162



NOTE:

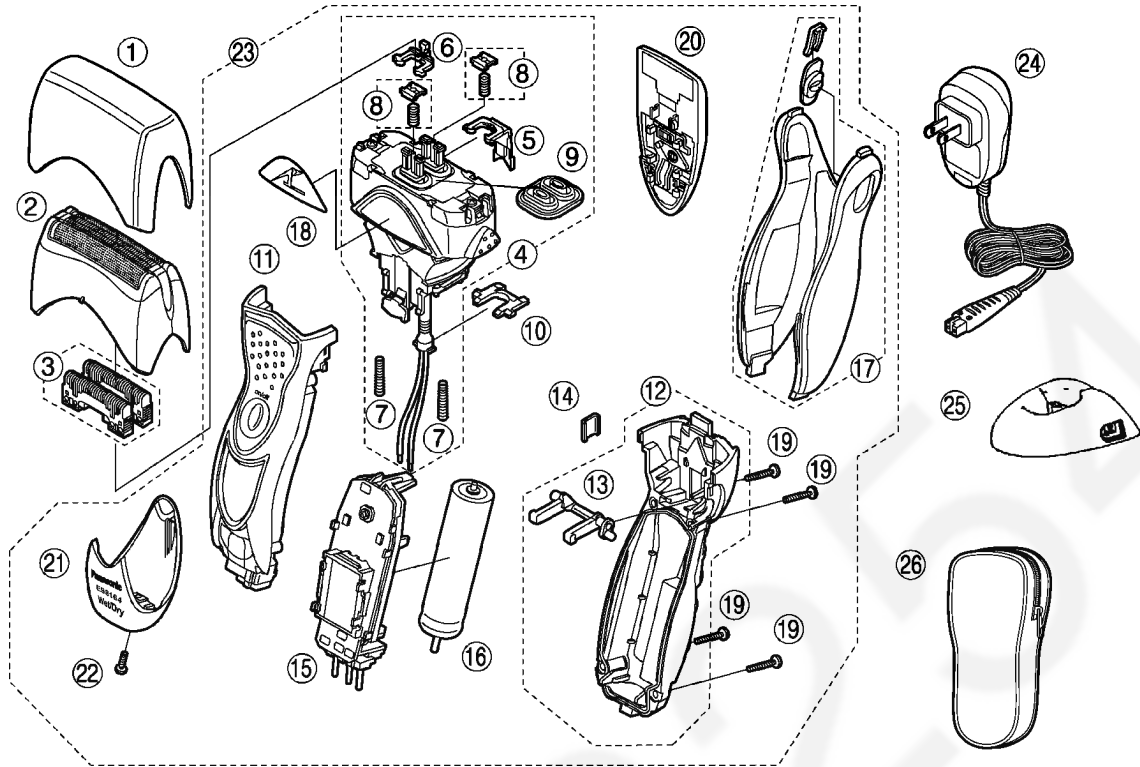
*A=available as an optional accessory

*B=only available as set

*C=available individually

Ref. No.	Parts No.	Parts Name & Descriptions	Remarks	Per Unit
1	WES8163X7158	PROTECTIVE CAP		1
2	WES9065PC	OUTER FOIL		1
3	WES9066PC	INNER BLADE	*B (2PCS/PK)	2
4	WES8176L1007	LINEAR MOTOR ASSEMBLY		1
5	WES8176L1087	TRIMMER DRIVING BAR		1
6	WES8176L1077	SLIT BLADE DRIVING BAR		1
7	WES8176L0227	FLOAT SPRING	*B (2PCS/PK)	2
8	WES8176L0587	SPRING AND STOPPER	*B (2SETS/PK)	2
9	WES8176L0327	WATERPROOF RUBBER		1
10	WES8176L0207	TUBE HOLDER		1
11	WES8162S3058	HOUSING A		1
12	WES8175S3068	HOUSING B		1
13	WES8176L1157	LOCK LEVER SHAFT		1
14	WES8176L0167	HOUSING CLIP		1
15	WES8162L2128	MODULE		1
16	WES8163L2509	RECHARGEABLE BATTERY	LITHIUM-ION TYPE	1
17	WES8162H3368	REAR PANEL		1
18	WES8176N3347	LOGO PLATE		1
19	WES8176L6007	P TIGHT SCREW	*C M2-12	4
20	WES8176H1507	TRIMMER		1
21	WES8162S3848	BOTTOM COVER		1
22	WES8176L6057	TAPPING SCREW	M2-8	1
23	WES8162S3038	BODY BLOCK		1
24	WES8163K7658	CHARGING ADAPTOR	A-2 PLUG	1
25	WES8163K7668	CHARGING STAND		1
26	WES8176K7017	SOFT CASE		1
-	WES8162S8008	INDIVIDUAL BOX		1
-	WES8164S8108	OPERATING INSTRUCTIONS		1

2.2. ES8164



NOTE:

*A=available as an optional accessory

*B=only available as set

*C=available individually

Ref. No.	Parts No.	Parts Name & Descriptions	Remarks	Per Unit
1	WES8163X7158	PROTECTIVE CAP		1
2	WES9065PC	OUTER FOIL		1
3	WES9066PC	INNER BLADE	*B (2PCS/PK)	1ST
4	WES8176L1007	LINEAR MOTOR ASSEMBLY		1
5	WES8176L1087	TRIMMER DRIVING BAR		1
6	WES8176L1077	SLIT BLADE DRIVING BAR		1
7	WES8176L0227	FLOAT SPRING	*B (2PCS/PK)	2
8	WES8176L0587	SPRING AND STOPPER	*B (2SETS/PK)	2
9	WES8176L0327	WATERPROOF RUBBER		1
10	WES8176L0207	TUBE HOLDER		1
11	WES8164S3058	HOUSING A		1
12	WES8175S3068	HOUSING B		1
13	WES8176L1157	LOCK LEVER SHAFT		1
14	WES8176L0167	HOUSING CLIP		1
15	WES8163L2128	MODULE		1
16	WES8163L2509	RECHARGEABLE BATTERY	LITHIUM-ION TYPE	1
17	WES8162H3369	REAR PANEL		1
18	WES8175S3347	LOGO PLATE		1
19	WES8176L6007	P TIGHT SCREW	*C M2-12	4
20	WES8175H1507	TRIMMER		1
21	WES8164H3848	BOTTOM COVER		1
22	WES8176L6057	TAPPING SCREW	M2-8	1
23	WES8164S3038	BODY BLOCK		1
24	WES8163K7658	CHARGING ADAPTOR	for USA (A-2 PLUG)	1
24	WES8164K7656	CHARGING ADAPTOR	for CANADA (A-2 PLUG)	1
25	WES8163K7668	CHARGING STAND		1
26	WES8176K7017	SOFT CASE		1
-	WES8164S8008	INDIVIDUAL BOX		1
-	WES8164S8108	OPERATING INSTRUCTIONS		1