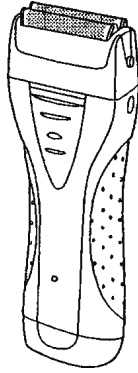


Service Manual

Wet/Dry Rechargeable Shaver

ES4001



SPECIFICATIONS

Power source	AC100-120V/220-240V, 50-60Hz (Automatic voltage conversion)
Power source (only for Korea)	AC110-220V, 60Hz
Power consumption	25/30mA
Power consumption (only for Korea)	30mA
Motor voltage	1.2V DC
Charging time	8-hours
Weight	150g
Supplied accessories	Soft case Cleaning brush

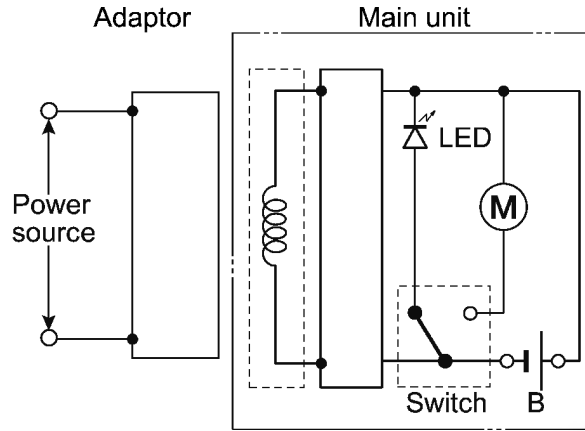
WARNING

This service information is designed for experienced repair technicians only and is not designed for use by the general public. It does not contain warnings or cautions to advise non-technical individuals of potential dangers in attempting to service a product. Products powered by electricity should be serviced or repaired only by experienced professional technicians. Any attempt to service or repair the product or products dealt with in this service information by anyone else could result in serious injury or death.

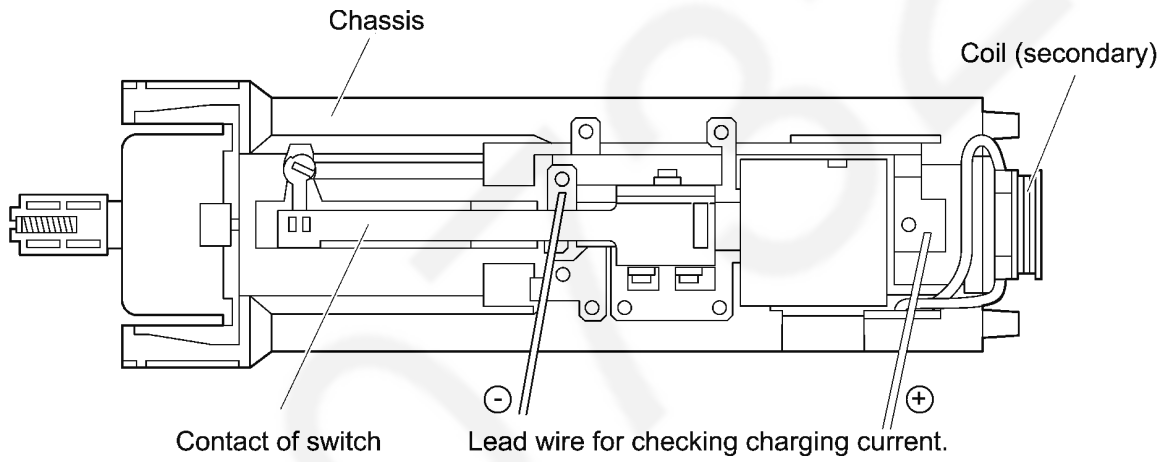
CONTENTS

	Page		Page
1 SCHEMATIC DIAGRAM	2	4 TROUBLESHOOTING GUIDE	6
2 WIRING CONNECTION DIAGRAM	2	5 EXPLODED VIEW & REPLACEMENT PARTS LIST	8
3 DISASSEMBLY / ASSEMBLY INSTRUCTIONS	3		

1 SCHEMATIC DIAGRAM



2 WIRING CONNECTION DIAGRAM



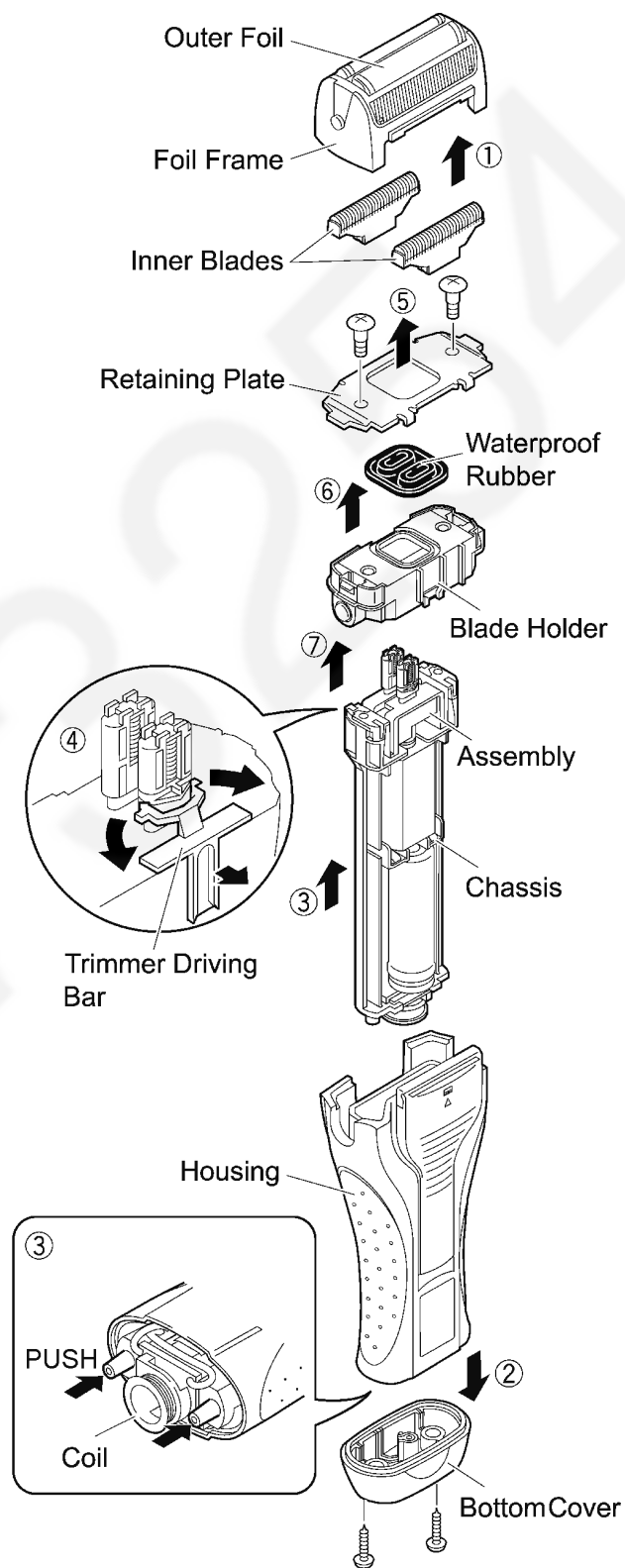
3 DISASSEMBLY / ASSEMBLY INSTRUCTIONS

3.1. MAIN UNIT REPLACEMENT

Follow the procedure below to disassemble the main block.

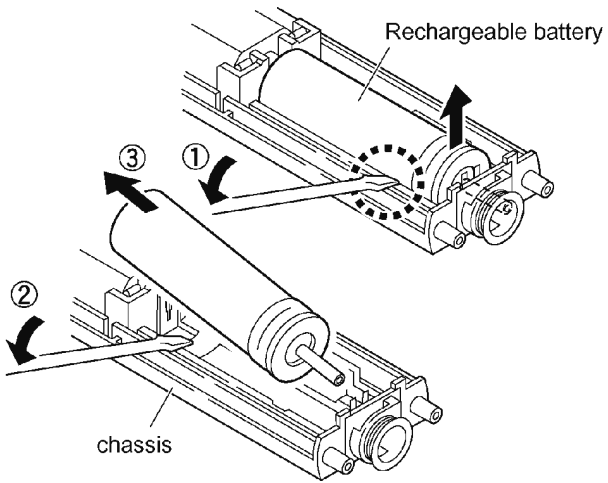
1. Remove Cap, Foil frame and Inner blades.
2. Loosen the two bottom screws and remove the bottom cover.
3. Take out the chassis block from housing by pushing the base of chassis.
4. Remove the trimmer driving bar.
5. Loosen the two screws and lift the rubber retaining plate away.
6. Remove the driving head water proof rubber.
7. Remove the blade holder block.

NOTE: When reassembling, replace the new waterproof rubber.



3.2. BATTERY REPLACEMENT

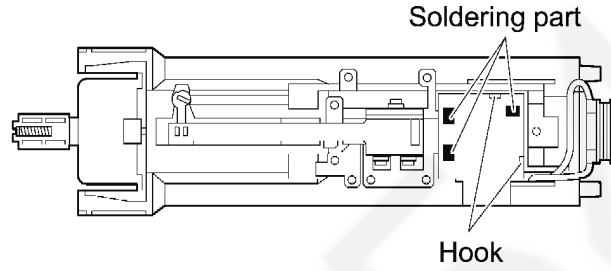
To remove the battery, fix the top of battery terminal with the flat and lifting up the battery pin.



3.3. MODULE REPLACEMENT

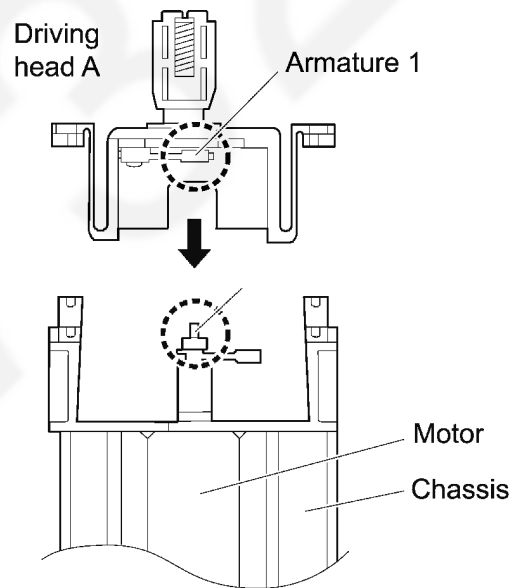
The module is soldered to the chassis at 3 points.

1. Unsolder the three connections to the chassis.
2. Remove the module from the two hooks of the chassis.

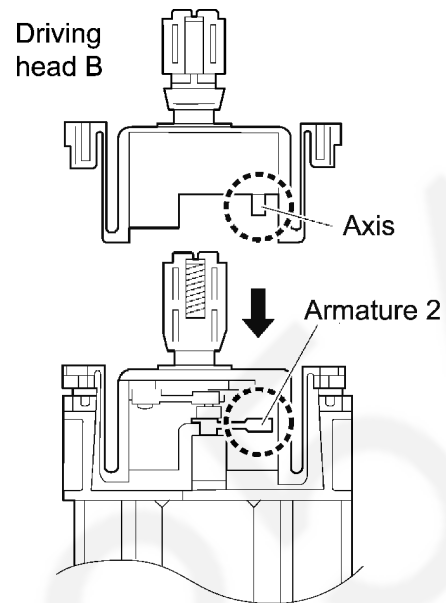


3.4. DRIVING HEADS INSTALLATION

- (1) Install driving head A in the chassis (with the motor assembled) after inserting the motor tip pin into the hole of armature of driving head A.

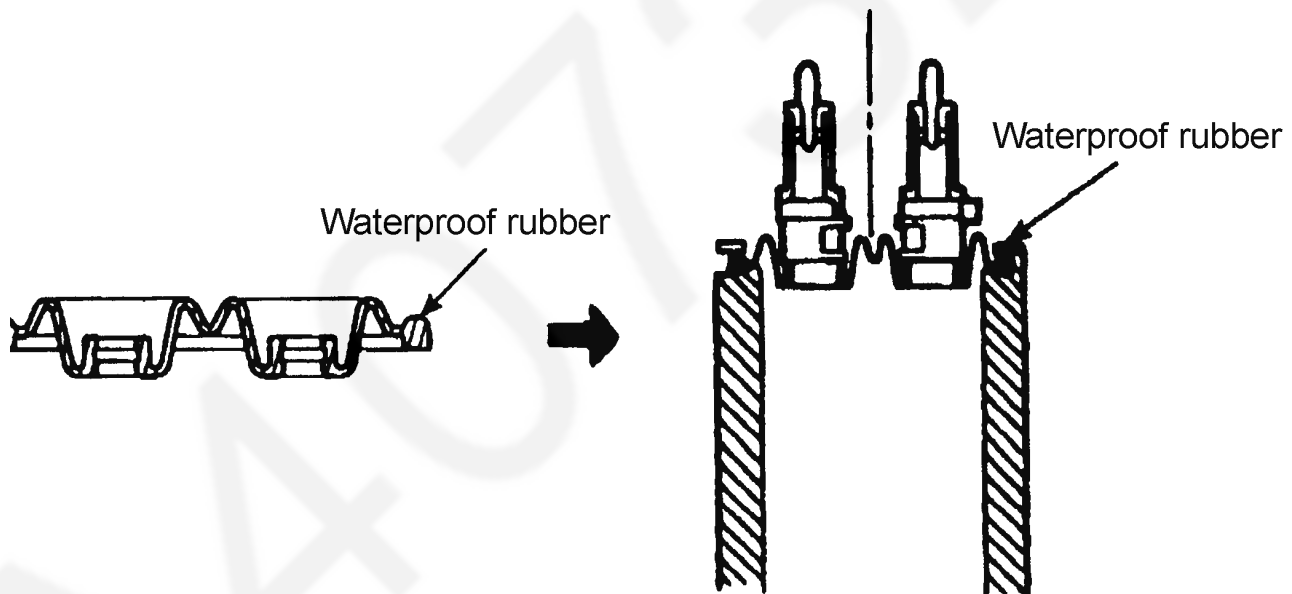


- (2) Then, install driving head B in the assembly (1) above after inserting driving head B axis into the hole of armature 2 of the motor.

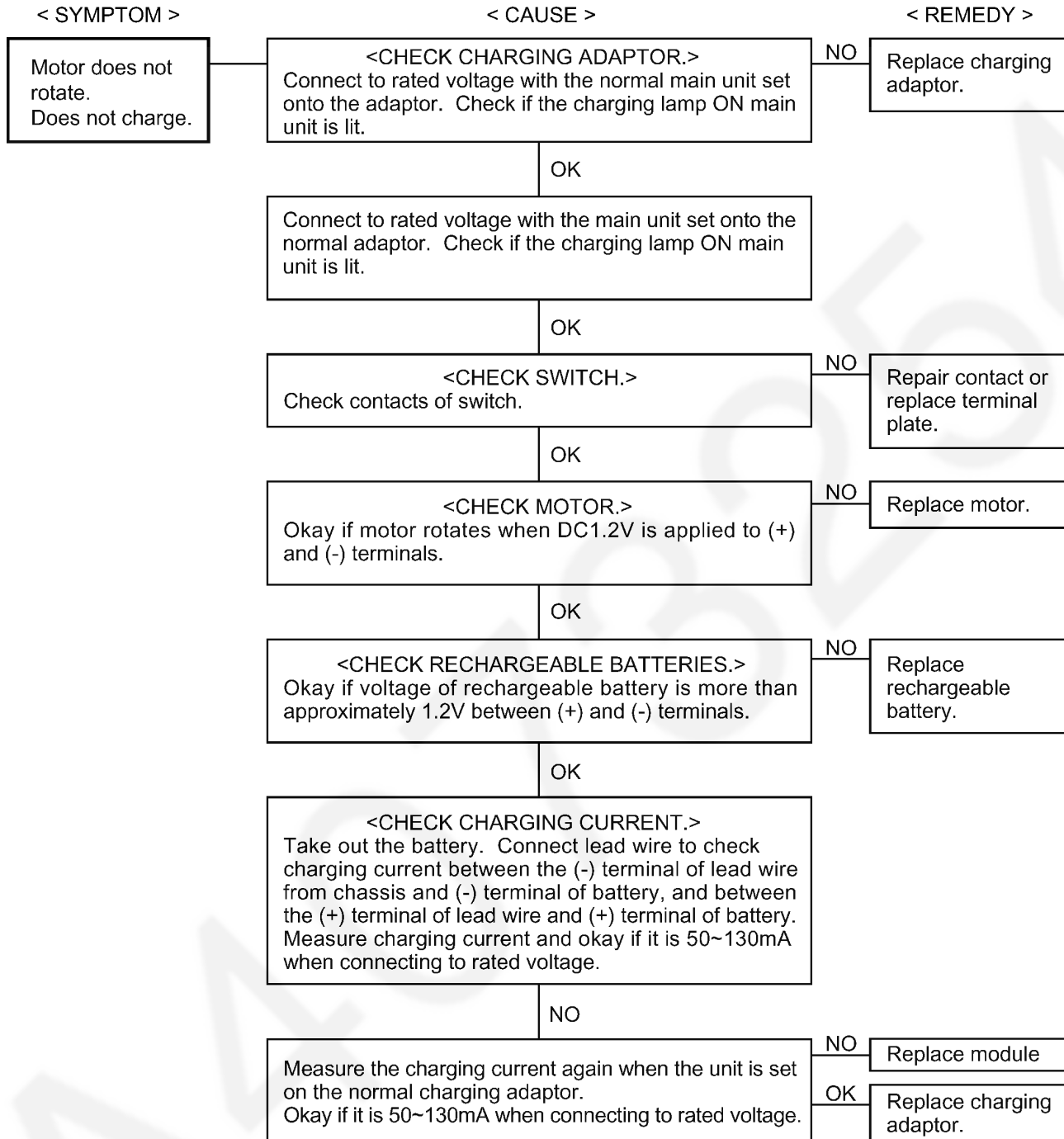


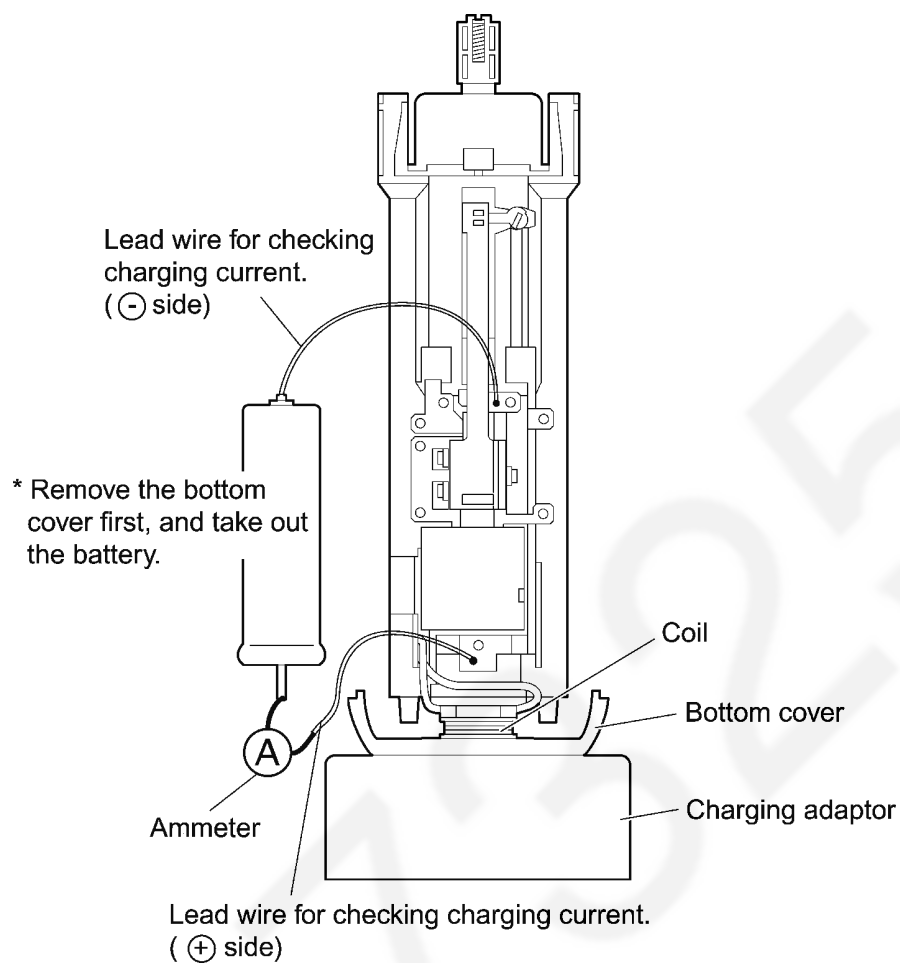
3.5. WATERPROOF RUBBER INSTALLATION

The waterproof rubber must be fitted the right way around.
Install as shown in figure by inserting firmly to the set position.



4 TROUBLESHOOTING GUIDE





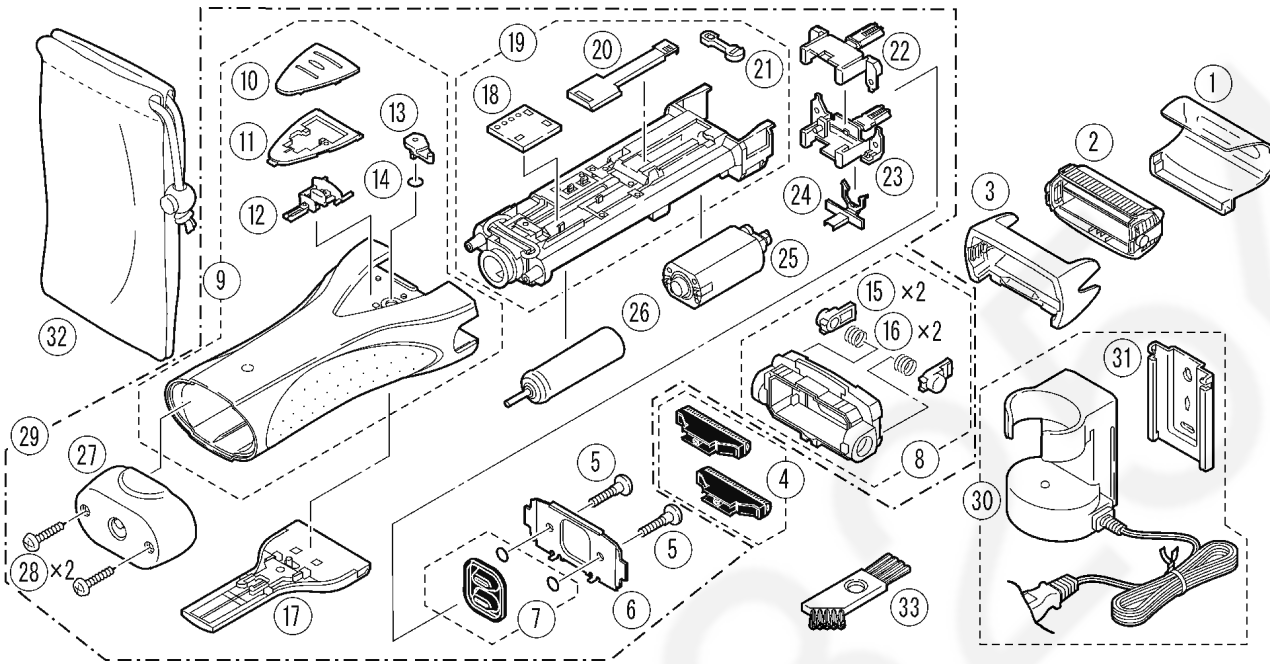
NOTE: The charging current fluctuates depending on the space between charging adaptor and the coil.

Please follow the procedure below.

1. Put the coil and the bottom cover close together.
2. Put the bottom cover and the charging adaptor close together.
3. Measure the charging current between two lead wires.

5 EXPLODED VIEW & REPLACEMENT PARTS LIST

5.1. EXPLODED VIEW



5.2. REPLACEMENT PARTS LIST

NOTE:

*A=available as an optional accessory

*B=only available as set

*C=available individually

Ref. No.	Part No.	Part Name & Description	Remarks	Per Unit
1	WES4001X7158	PROTECTIVE CAP		(BG) 1
2	WES9837E	OUTER FOIL		1
3	WES4001S0047	OUTER FOIL FRAME		(BG) 1
4	WES9850E	INNER BLADE		1
5	WES762L9707	SCREW	*B	2
6	WES4001L0207	RETAINING PLATE		(BG) 1
7	WES727L0327	WATER-PROOF RUBBER SET		(BG) 1
8	WES4001H0007	BLADE MOUNTING BASE		(BG) 1
9	WES4001S3160	HOUSING		(BG) 1
9	WES4001S3161	HOUSING	only for TAIWAN	(BG) 1
9	WES4001S3162	HOUSING	only for HONG KONG SINGAPORE and UAE	(BG) 1
10	WES4001H3207	SWITCH HANDLE		(BG) 1
11	WES4001J3967	SWITCH PLATE		(BG) 1
12	WES4001H0367	LOCK BUTTON		(BG) 1
13	WES4001L1667	SWITCH CAM		(BG) 1
14	WES663L0977	O-RING		(BG) 1
15	WES4001H3267	LOCK RELEASE BUTTON		(BG) 1
16	WES4001L0177	SPRING FOR RELEASE BUTTON		(BG) 1
17	WES4001K1507	TRIMMER		(BG) 1
18	WES4001L2127	MODULE		(BG) 1
19	WES4001L0777	CHASSIS		(BG) 1
20	WES4001L0057	CONTACT PLATE		(BG) 1
21	WES4001L1677	SWITCH CAM LEVER		(BG) 1
22	WES727L1247	DRIVING HEAD A		(BG) 1
23	WES727L1257	DRIVING HEAD B		(BG) 1
24	WES4001L1087	TRIMMER DRIVING BAR		(BG) 1
25	WES727L1007	MOTOR		(BG) 1
26	WES366L2509	RECHARGEABLE BATTERY	Ni-Mh	(BG) 1
27	WES4001H3847	BOTTOM COVER		(BG) 1
28	WES762L6007	SCREW	*C	2
29	WES4001S3040	BODY BLOCK		(BG) 1
29	WES4001S3041	BODY BLOCK	only for TAIWAN	(BG) 1
29	WES4001S3042	BODY BLOCK	only for HONG KONG SINGAPORE and UAE	(BG) 1
30	WES4001H7662	CHARGING ADAPTOR	A-2 PLUG	(BG) 1
30	WES4001H7663	CHARGING ADAPTOR	C-2 PLUG	(BG) 1
30	WES4001H7674	CHARGING ADAPTOR	only for HONG KONG SINGAPORE and UAE	(BG) 1
30	WES4001H7671	CHARGING ADAPTOR	KOREAN PLUG	(BG) 1
31	WES663H7667	WALL MOUNT		1
32	WES4001K7007	SOFT CASE		(BG) 1
33	WES861B7057	CLEANING BRUSH		1
-	WES4001S8012	INDIVIDUAL BOX		(BG) 1
-	WES4001S8013	INDIVIDUAL BOX	only for TAIWAN	(BG) 1
-	WES4001S8111	OPERATING INSTRUCTIONS		(BG) 1