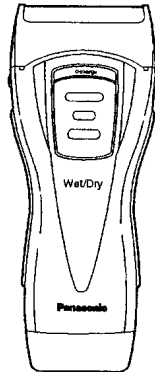


Service Manual

Wet/Dry Rechargeable Shaver



ES3040
ES3041
ES3042

SPECIFICATIONS

Power source	AC100-120V, 50-60Hz (Automatic voltage conversion)
Motor voltage	1.2V DC
Power consumption	6W
Charging time	8-hours
Weight	140g
Soft case	<SUPPLIED ACCESSORIES>

WARNING

This service information is designed for experienced repair technicians only and is not designed for use by the general public. It does not contain warnings or cautions to advise non-technical individuals of potential dangers in attempting to service a product. Products powered by electricity should be serviced or repaired only by experienced professional technicians. Any attempt to service or repair the product or products dealt with in this service information by anyone else could result in serious injury or death.

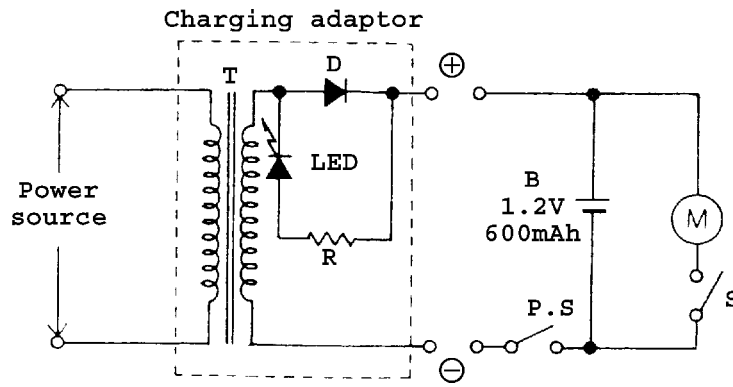
CONTENTS

	Page	Page	
1 SCHEMATIC DIAGRAM	2	5 TROUBLESHOOTING GUIDE	5
2 WIRING CONNECTION DIAGRAM	2	6 EXPLODED VIEW	6
3 DISASSEMBLY METHOD	3	7 REPLACEMENT PARTS LIST	6
4 CAUTION IN ASSEMBLY	4		

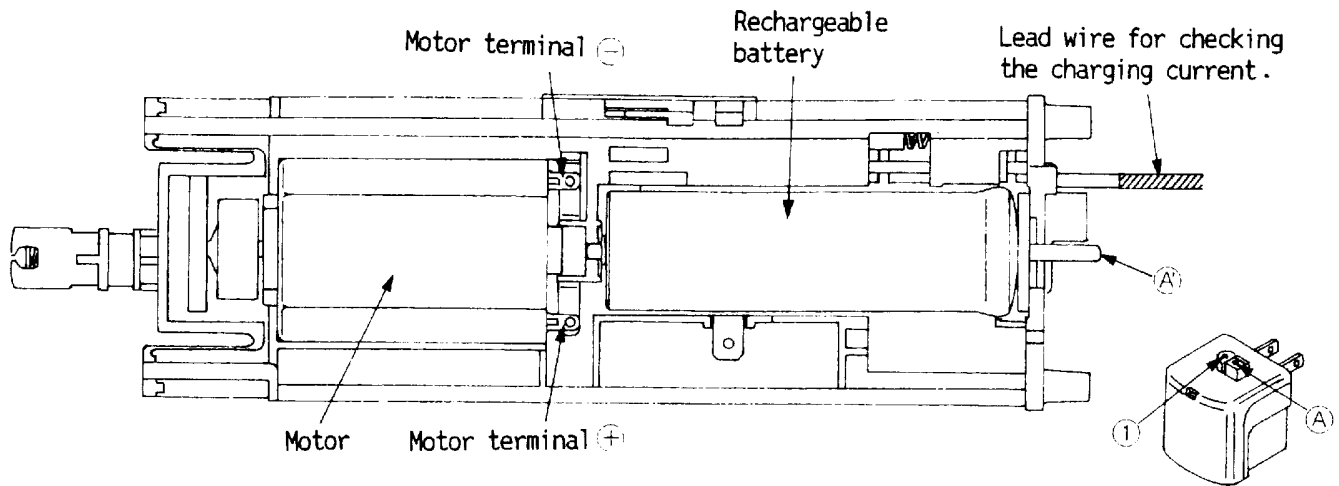
Panasonic®

© 2001 Matsushita Electric Works, Ltd. All rights reserved. Unauthorized copying and distribution is a violation of law.

1 SCHEMATIC DIAGRAM




2 WIRING CONNECTION DIAGRAM

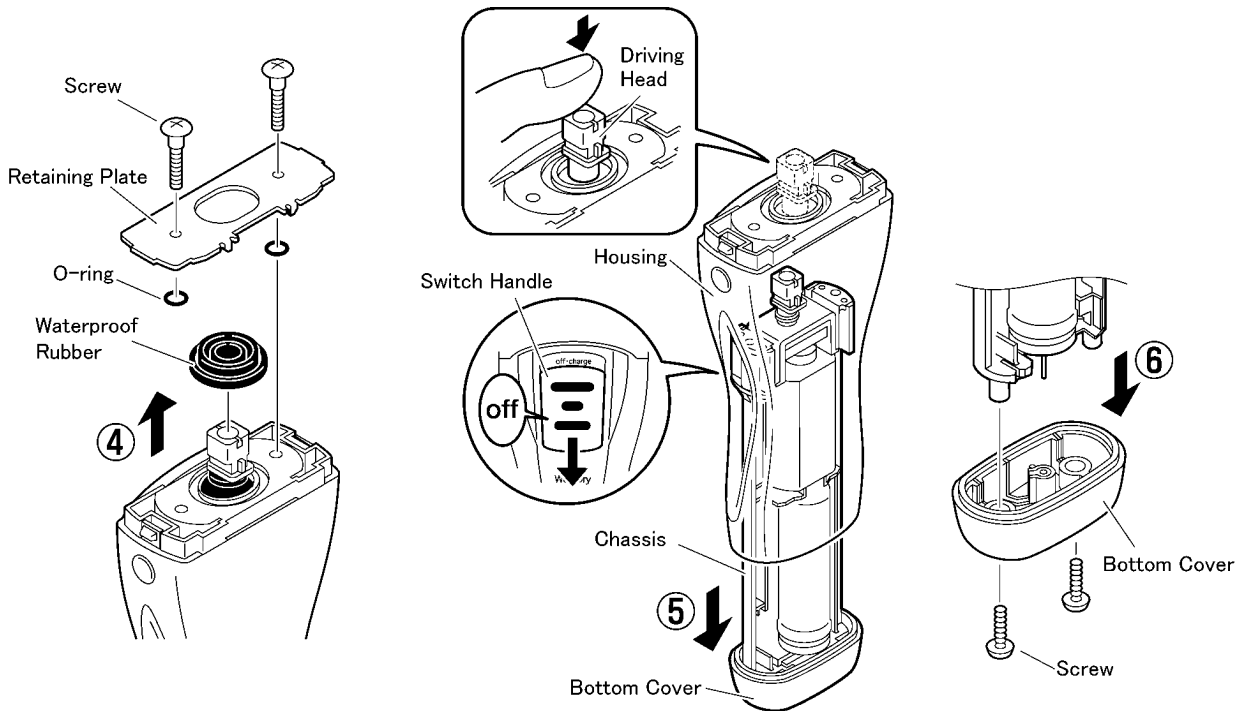
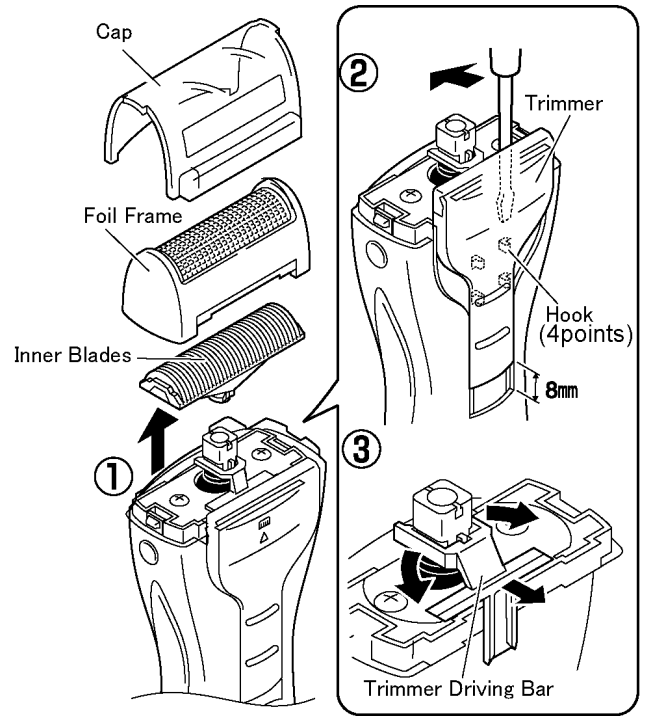


3 DISASSEMBLY METHOD

Follow the procedure below to disassemble the main block.

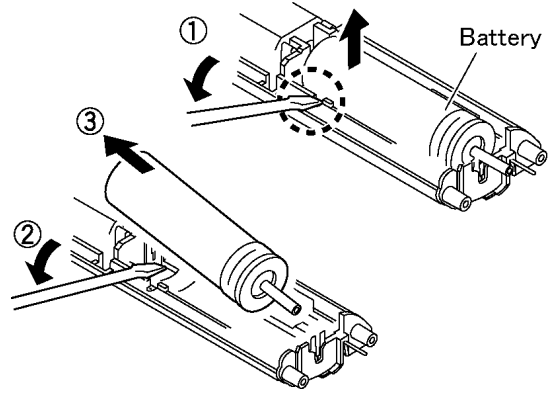
1. Remove cap, foil frame and inner blade.
2. Unhook right and left side of hooks at upside using a flat screwdriver with a position 8mm sliding above. Then slightly move trimmer until position marking  2 , and unhook lower side of hooks.
3. To remove trimmer driving bar, press bar outward.
4. Loosen two screws and lift rubber retaining plate away. Take out waterproof rubber and two O-rings.
5. Take out the chassis block from housing by pushing a head of driving head down with switch OFF.
6. Loosen two screws and remove bottom cover.

NOTE : When reassembling, replace the new waterproof rubber.



3.1. BATTERY REPLACEMENT

To remove battery, fix the top of battery terminal with a flat plate and lifting up the battery pin.



4 CAUTION IN ASSEMBLY

1. Bottom Cove

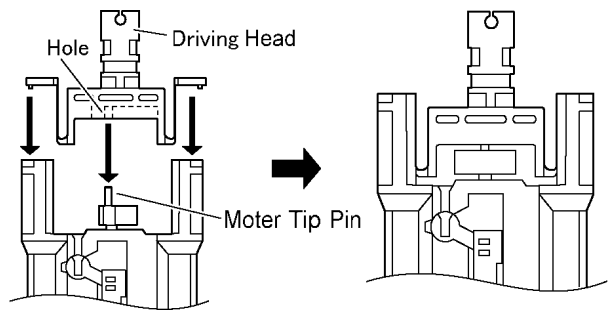
Make sure whether there is NO foreign substance sticking around a part covered with water seal.

2. Chassis

Make sure of terminal plates whether there is No deformation or their condition.

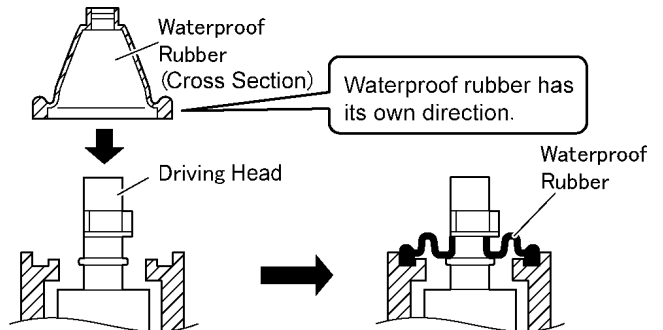
3. Driving Head

Insert a motor tip pin into the hole of driving head and install driving head in chassis.



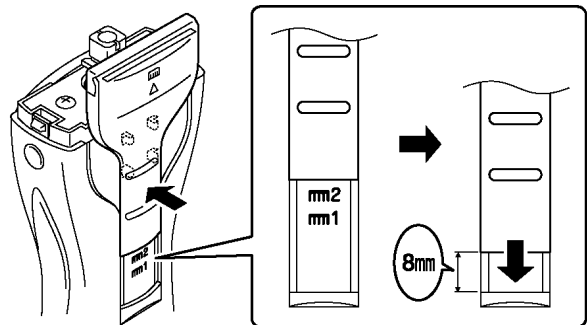
4. Waterproof Rubber

The driving head waterproof rubber must be fitted the right way around. Install as shown in figure by inserting firmly to the set position.

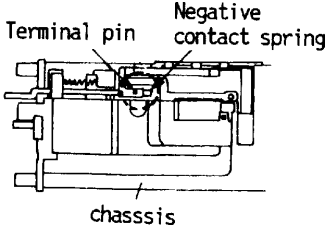
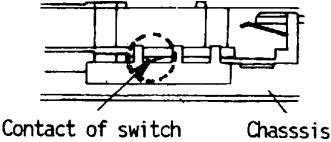


5. Trimmer

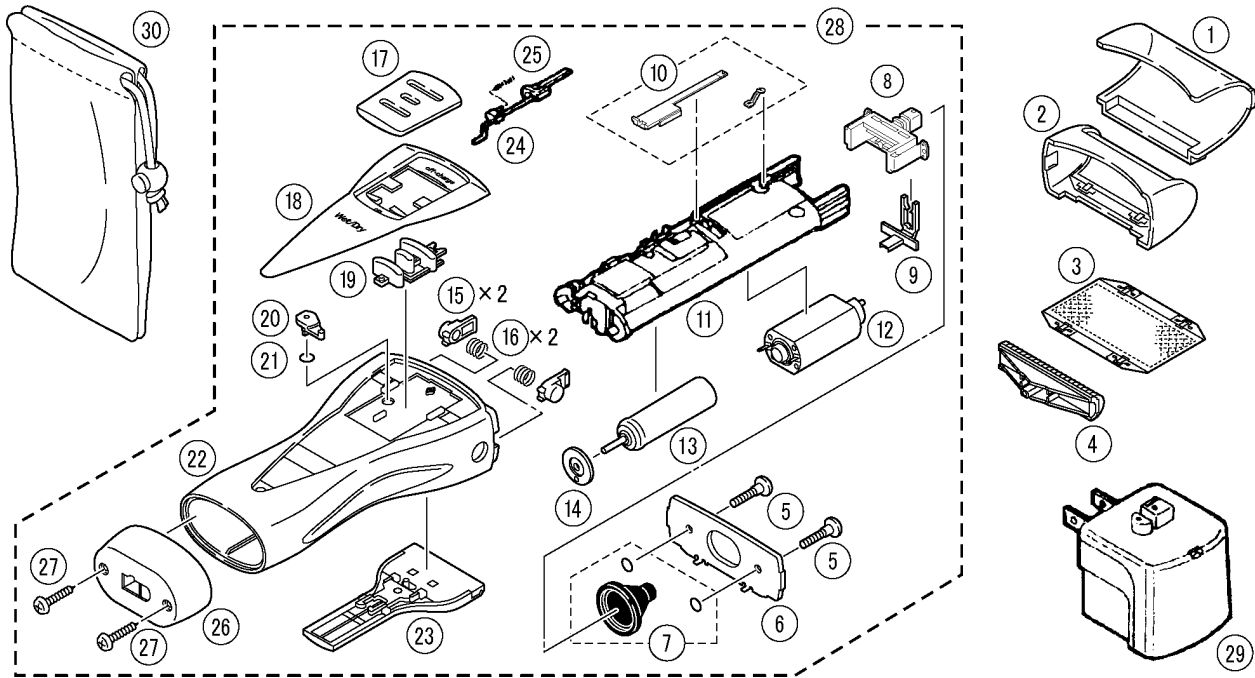
Set a position where marking **mm2** , and hook lower side of two hooks.
With a position 8mm sliding down, hook right and left side of hooks at upside.



5 TROUBLESHOOTING GUIDE

< SYMPTOM >	< CAUSE >	< REMEDY >
Motor does not rotate. Does not charge	<CHECK CHARGING ADAPTOR.> Connect to rated voltage. OK if it is approximately DC 1.5V-3.0V between ① - ② .	NO → Replace charging adaptor.
 <p>Terminal pin Negative contact spring chassis</p>	↓ OK	NO → Repair contact of negative contact spring.
 <p>Contact of switch Chassis</p>	<CHECK CONTACT CONDITIONS OF SWITCH.> Check for proper contact between negative contact spring and terminal pin when terminal pin is depressed.	
	↓ OK	NO → Repair contact or replace chassis.
	<CHECK SWITCH.> Check contacts of switch.	
	↓ OK	NO → Replace motor.
	<CHECK MOTOR.> Okay if motor rotates when DC1.2V is applied to (+) and (-) terminals.	
	↓ OK	NO → Replace rechargeable battery.
	<CHECK RECHARGEABLE BATTERIES.> Okay if voltage of rechargeable battery is more than approximately 1.2V between (+) and (-) terminals.	
OK	*The rechargeable battery has a limited life. The battery should be replaced if - after being charged for the rated charging time, battery voltage is less than DC 1.2V or an usabtime is extremely short. - the battery leaks. Check battery for leaks and terminals for white powder or green corrosion.	
	<CHECK CHARGING CURRENT> Connect lead wire ② to charging adaptor ① and measure charging current across ③ and ④ . Okay if it is 160±20mA.	

6 EXPLODED VIEW



7 REPLACEMENT PARTS LIST

Ref. No.	Part No.	Part Name & Description	Remarks	Per Unit
1	WES3040X7158	PROTECTIVE CAP		(BG) 1
2	WES3050S0047	OUTER FOIL FRAME	ES3040/3042	(BG) 1
2	WES3041K0048	OUTER FOIL FRAME	ES3041	(BG) 1
3	WES9941P	OUTER FOIL		1
4	WES9942P	INNER BLADE		1
5	WES762L9707	SCREW	*C	2
6	WES3050L0207	RETAINING PLATE		(BG) 1
7	WES366L0328	WATERPROOF RUBBER		1
8	WES366L1248	DRIVING HEAD		(BG) 1
9	WES366K1088	TRIMMER DRIVING BAR		(BG) 1
10	WES365L0057	TERMINAL PLATE		(BG) 1
11	WES365L0777	CHASSIS		(BG) 1
12	WES364L1007	MOTOR		(BG) 1
13	WES365L2508	RECHARGEABLE BATTERY		(BG) 1
14	WES365L0307	SPACER		(BG) 1
15	WES4001H3267	RELEASE BUTTON	*C	(BG) 2
16	WES4001L0177	SPRING FOR RELEASE BUTTON	*C	(BG) 2
17	WES3050S3207	SWITCH HANDLE		(BG) 1
18	WES3040S3968	SWITCH PANEL	ES3040/3041	(BG) 1
18	WES3042A3968	SWITCH PANEL	ES3042	(BG) 1
19	WES3050A0367	LOCK BUTTON		(BG) 1
20	WES3050L1667	SWITCH CAM		(BG) 1
21	WES663L0977	SWITCH O-RING		1
22	WES3040S3058	HOUSING	ES3040	(BG) 1
22	WES3041K3058	HOUSING	ES3041	(BG) 1
22	WES3042S3058	HOUSING	ES3042	(BG) 1
23	WES4001K1507	TRIMMER	ES3040/3042	(BG) 1
23	WES3041K1508	TRIMMER	ES3041	(BG) 1
24	WES365L1577	PLUG LEVER		(BG) 1
25	WES365L0187	LEVER SPRING		(BG) 1
26	WES3040H3848	BOTTOM COVER	ES3040/3042	(BG) 1
26	WES3041K3848	BOTTOM COVER	ES3041	(BG) 1
27	WES762L6007	SCREW	*C	2
28	WES3040S3038	BODY BLOCK	ES3040	(BG) 1
28	WES3041K3038	BODY BLOCK	ES3041	(BG) 1
28	WES3042S3038	BODY BLOCK	ES3042	(BG) 1
29	WES365H7658	CHARGING ADAPTOR	A-2PLUG	(BG) 1
30	WES4001K7007	SOFT CASE		(BG) 1
-	WES3040S8108	OPERATING INSTRUCTIONS		(BG) 1