

Service Manual

Rechargeable Shaver

Model No. **ES-LF51**

Middle East

Simplified



Please file and use this manual together with the service manual for Model No. ES-LA93/ES-LA63, Order No.SD0904E30CE.

⚠ WARNING

This service information is designed for experienced repair technicians only and is not designed for use by the general public. It does not contain warnings or cautions to advise non-technical individuals of potential dangers in attempting to service a product. Products powered by electricity should be serviced or repaired only by experienced professional technicians. Any attempt to service or repair the product or products dealt with in this service information by anyone else could result in serious injury or death.

IMPORTANT SAFETY NOTICE

There are special components used in this equipment which are important for safety. These parts are marked by ⚠ in the Schematic Diagrams, Circuit Board Diagrams, Exploded Views and Replacement Parts List. It is essential that these critical parts should be replaced with manufacturer's specified parts to prevent shock, fire or other hazards. Do not modify the original design without permission of manufacturer.

TABLE OF CONTENTS

	PAGE	PAGE
1 Warning-----	2	
2 Specifications -----	2	
3 Disassembly and Assembly Instructions -----	3	
4 Schematic Diagram-----	4	
5 Exploded View and Replacement Parts List -----	5	

Panasonic

© Panasonic Electric Works Co., Ltd. 2011.
All rights reserved. Unauthorized copying and distribution is a violation of law.

1 Warning

Caution:

- Pb free solder has a higher melting point than standard solder; Typically the melting point is 50 - 70°F (30 - 40°C) higher. Please use a soldering iron with temperature control and adjust it to 750 ± 20°F (400 ± 10°C). In case of using high temperature soldering iron, please be careful not to heat too long.
- Pb free solder will tend to splash when heated too high (about 1100°F / 600°C).

2 Specifications

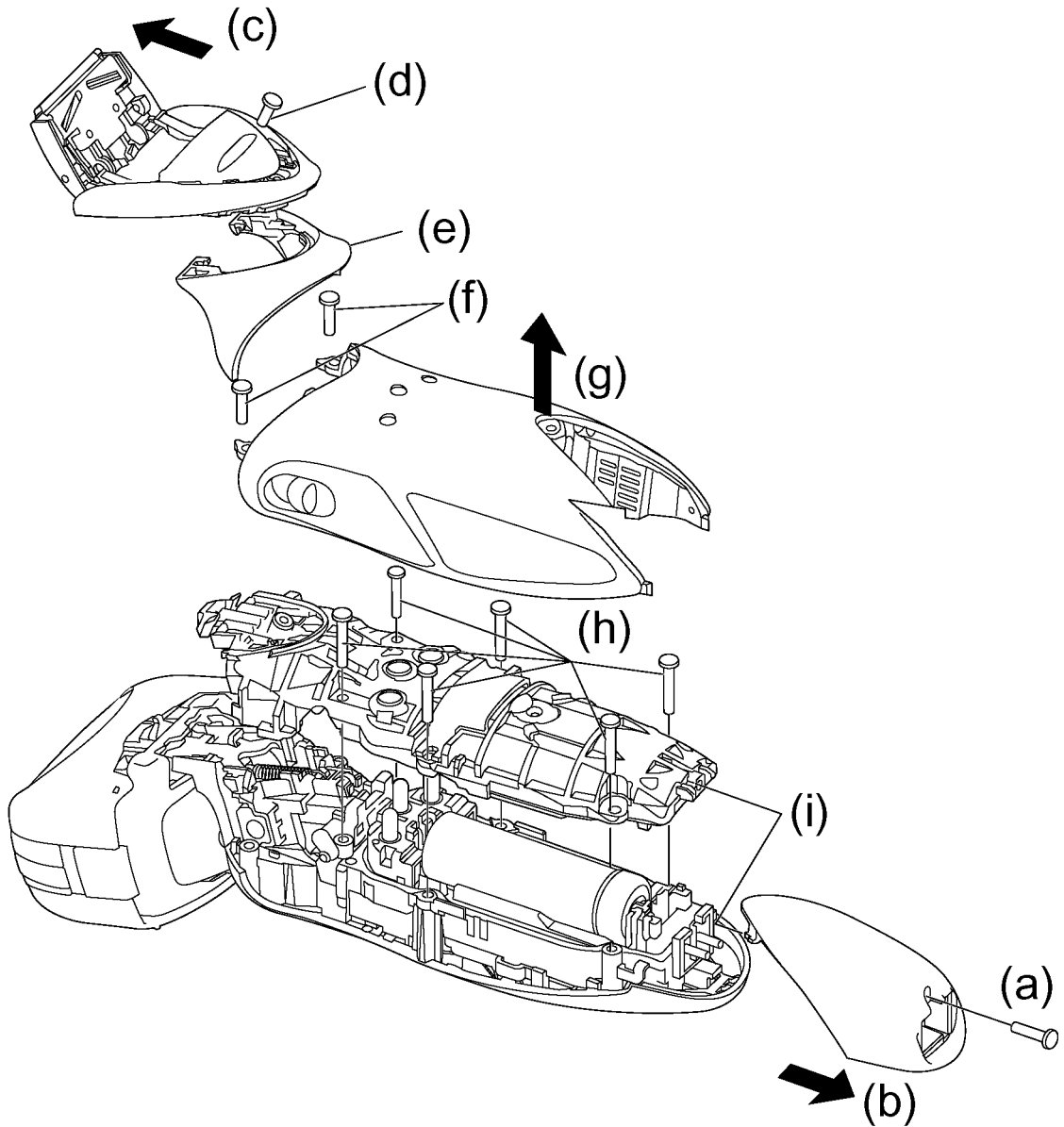
Power source	AC 100-240V, 50-60Hz (Automatic voltage conversion)
Power consumption	Approx. 7W (when charging)
Charging time	1 Hour
Shaves per charge	14 times (3 minutes shave)
Measurement	(H) 15.7 x (W) 6.3 x (D) 5.3
Weight	Approx. 175g (without protective cap)

Supplied accessories	Soft case
	Oil
	Cleaning brush

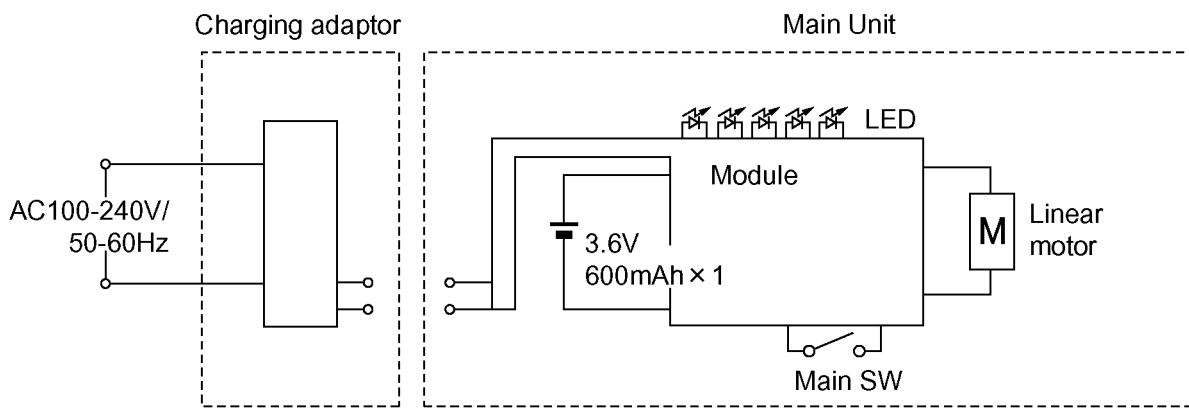
3 Disassembly and Assembly Instructions

Follow the procedure below to disassemble the main body.

- (a) Loosen a screw.
- (b) Remove the bottom cover
- (c) Push up the blade of trimmer.
- (d) Loosen a screw.
- (e) Remove the upper rear panel.
- (f) Loosen two screws.
- (g) Remove the rear panel.
- (h) Loosen six screws.
- (i) Remove the housing B.

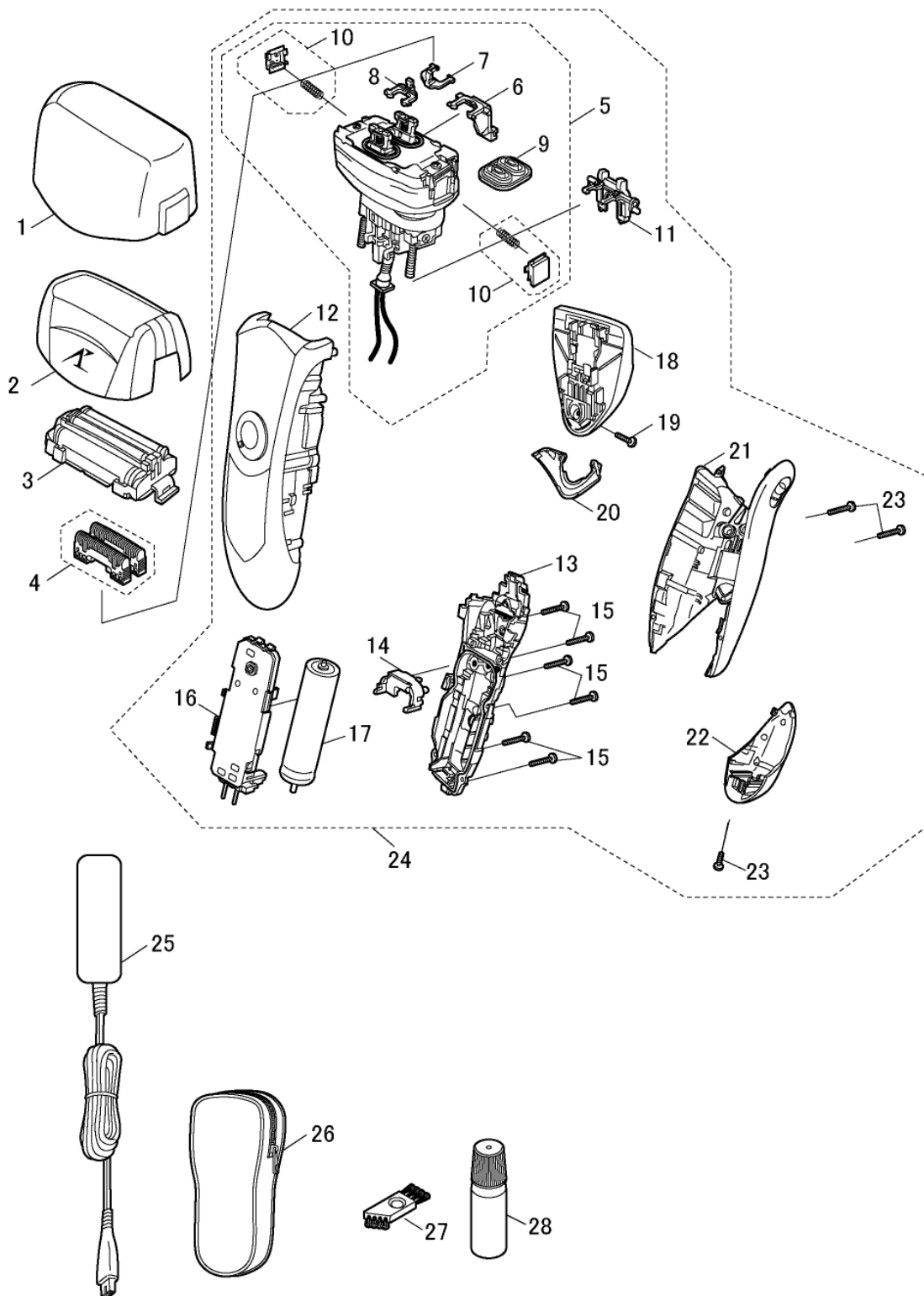


4 Schematic Diagram



5 Exploded View and Replacement Parts List

Model No. : ES-LF51 Exploded View



Model No. : ES-LF51 Parts List

Safety	Ref. No.	Part No.	Part Name & Description	Q'ty	Remarks
	1	WESLF70X7158	PROTECTIVE CAP	1	
	2	WESLF70S0047	OUTER FOIL FRAME	1	
	3	WES9167E	OUTER FOIL	1	
	4	WES9068E	INNER BLADE	1ST	
	5	WESLF70L1007	LINEAR MOTOR ASSEMBLY	1	
	6	WES8258L1087	TRIMMER DRIVING BAR	1	
	7	WES8258L1077	SLIT BLADE DRIVING BAR	1	
	8	WES8258L1177	FINISHING BLADE DRIVING BAR	1	
	9	WES8258L0327	WATERPROOF RUBBER	1	
	10	WESLF70K3267	FOIL RELEASE BUTTON	2	
	11	WES8258L0537	TUBE HOLDER	1	
	12	WESLF51S3058	HOUSING A	1	
	13	WES8258H3067	HOUSING B	1	
	14	WES8255L0497	REAR COVER	1	
	15	WES8176L6007	P TIGHT SCREW	6	(M2-12)
	16	WESLF51L2128	MODULE	1	
	17	WES8176L2508	RECHARGEABLE BATTERY	1	(LI-ION TYPE)
	18	WESLF70S1507	TRIMMER	1	
	19	WES8238L6007	P TIGHT SCREW	1	(M2-6)
	20	WES8258S3857	REAR PANEL (UPPER)	1	
	21	WESLF70K3367	REAR PANEL	1	
	22	WESLF51S3121	BOTTOM COVER	1	
	23	WES8176L6057	TAPPING SCREW	3	(M2-8)
	24	WESLF51S3031	BODY BLOCK	1	
	24	WESLV90K7663	CHARGING ADAPTOR	1	(C-2 PLUG)
	26	WES8259K7018	SOFT CASE	1	
	27	WES8093H7057	CLEANING BRUSH	1	
	28	WES8196X7918	OIL	1	
	-	WESLF51S8001	INDIVIDUAL BOX	1	
	-	WESLF51S8101	OPERATING INSTRUCTIONS	1	

Parts Change Notice

Model No. ES-LF51 <Correction for S/M SD1106M61AE>

Please revise the original parts list in the Service Manual to conform to the change(s) shown herein.
If new part numbers are shown, be sure to use them when ordering parts.

Reason for Change		*The circled item indicates the reason. If no marking, see the Notes in the bottom column.				
1.	Improve performance					
2.	Change of material or dimension					
3.	To meet approved specification					
4.	Standardization					
5.	Addition					
6.	Deletion					
7.	Correction					
8.	Other					
Interchangeability Code		**The circled item indicates the interchangeability. If no marking, see the Notes in the bottom column.				
Parts Set Production						
(A)	Original Early New Late	Original or new parts may be used in early or late production set. Use original parts until exhausted, then stock new parts.				
B	Original Early New Late	Original parts may be used in early production sets only. New parts may be used in early or late production sets. Use original parts where possible, then stock new parts.				
C	Original Early New Late	New parts only may be used in early or late production sets. Stock new parts.				
D	Original Early New Late	Original parts may be used in early production sets only. New parts may be used in late production sets only. Stock both original and new parts.				
E	Other					
Part Number						
Model No.	Ref. No.	Original Part No.	New Part No.	Notes(***)	Part Name & Descriptions	
ES-LF51	22	WESLF51S3121	WESLF51S3120	*8, **A	BOTTOM COVER	
ES-LF51	24	WESLF51S3031	WESLF51S3030	*8, **A	BODY BLOCK	

File this Parts Change Notice with your copy of the Service Manual.

