

Service Manual

Pore Cleanser

Model No. **EH2513**

ASIA



⚠ WARNING

This service information is designed for experienced repair technicians only and is not designed for use by the general public. It does not contain warnings or cautions to advise non-technical individuals of potential dangers in attempting to service a product. Products powered by electricity should be serviced or repaired only by experienced professional technicians. Any attempt to service or repair the product or products dealt with in this service information by anyone else could result in serious injury or death.

IMPORTANT SAFETY NOTICE

There are special components used in this equipment which are important for safety. These parts are marked by **⚠** in the Schematic Diagrams, Circuit Board Diagrams, Exploded Views and Replacement Parts List. It is essential that these critical parts should be replaced with manufacturer's specified parts to prevent shock, fire or other hazards. Do not modify the original design without permission of manufacturer.

TABLE OF CONTENTS

	PAGE	PAGE
1 Warning -----	2	
2 Specifications -----	2	
3 Troubleshooting Guide -----	3	
4 Wiring Connection Diagram -----	4	
5 Schematic Diagram -----	4	
6 Exploded View and Replacement Parts List -----	5	

1 Warning

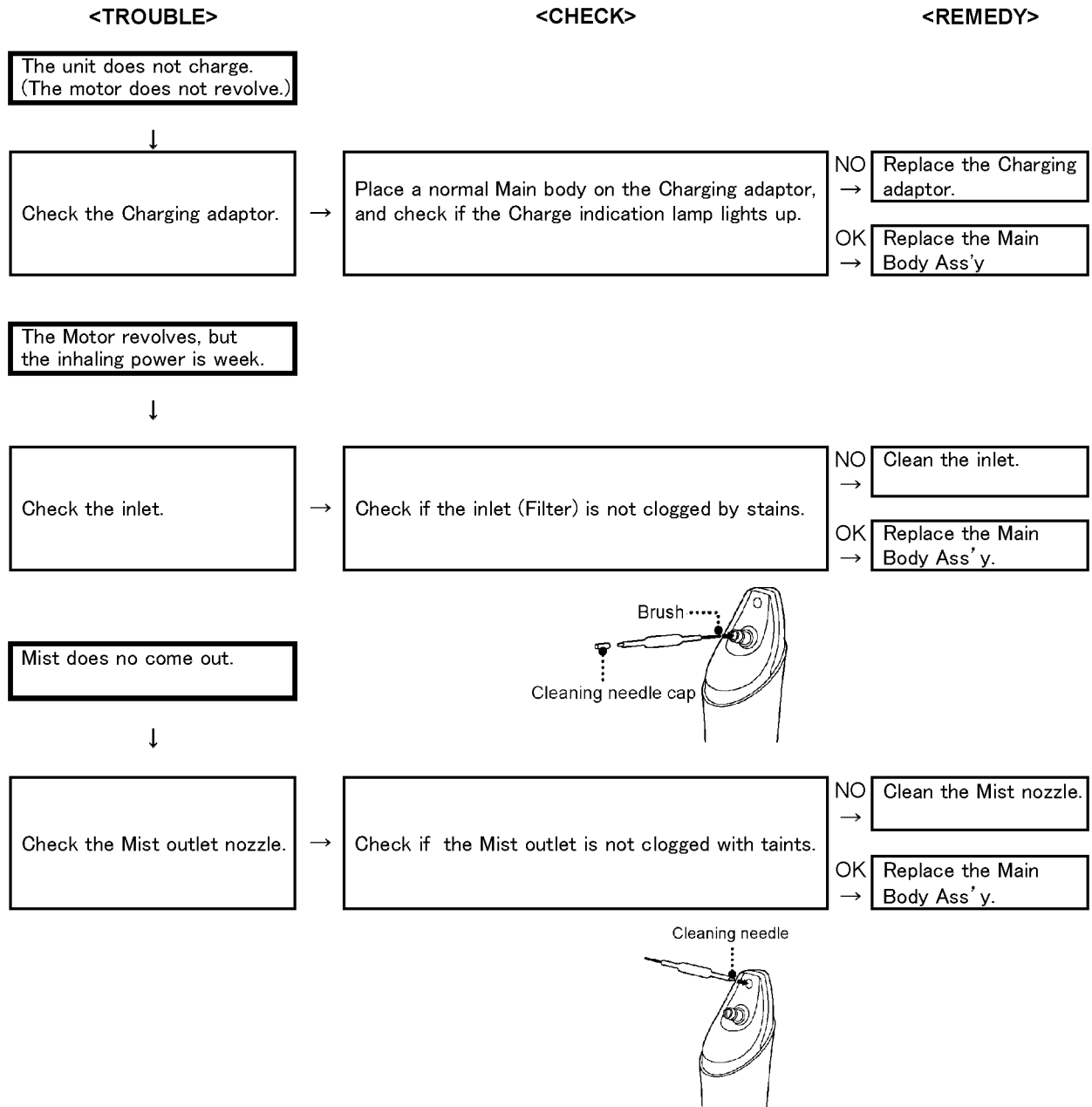
Caution:

- Pb free solder has a higher melting point than standard solder; Typically the melting point is 50 - 70°F (30 - 40°C) higher. Please use a soldering iron with temperature control and adjust it to 750 ± 20°F (400 ± 10°C). In case of using high temperature soldering iron, please be careful not to heat too long.
- Pb free solder will tend to splash when heated too high (about 1100°F / 600°C).

2 Specifications

Power source	AC 110-120V, 50-60Hz (TAIWAN)
	AC 100-240V, 50-60Hz (ASIA, MIDDLE EAST)
Power consumption	Approx. 2.0W
Motor voltage	1.2V DC
Charging time	12 Hours
Weight	150g (excluding charger stand ass'y)
Supplied accessories	Mist rod ass'y

3 Troubleshooting Guide



• How to clean the filter

- Inlet (Filter)

Turn the Switch off and remove the stains with the attached cleaning brush having a needle.

NOTE: Do not use the Cleaning needle side.

- Tank

Turn the Switch off and clean the inside of the Tank with the attached cleaning brush.

- Mist outlet

Turn the Switch off and clean the hole of the Mist outlet with the attached cleaning needle.

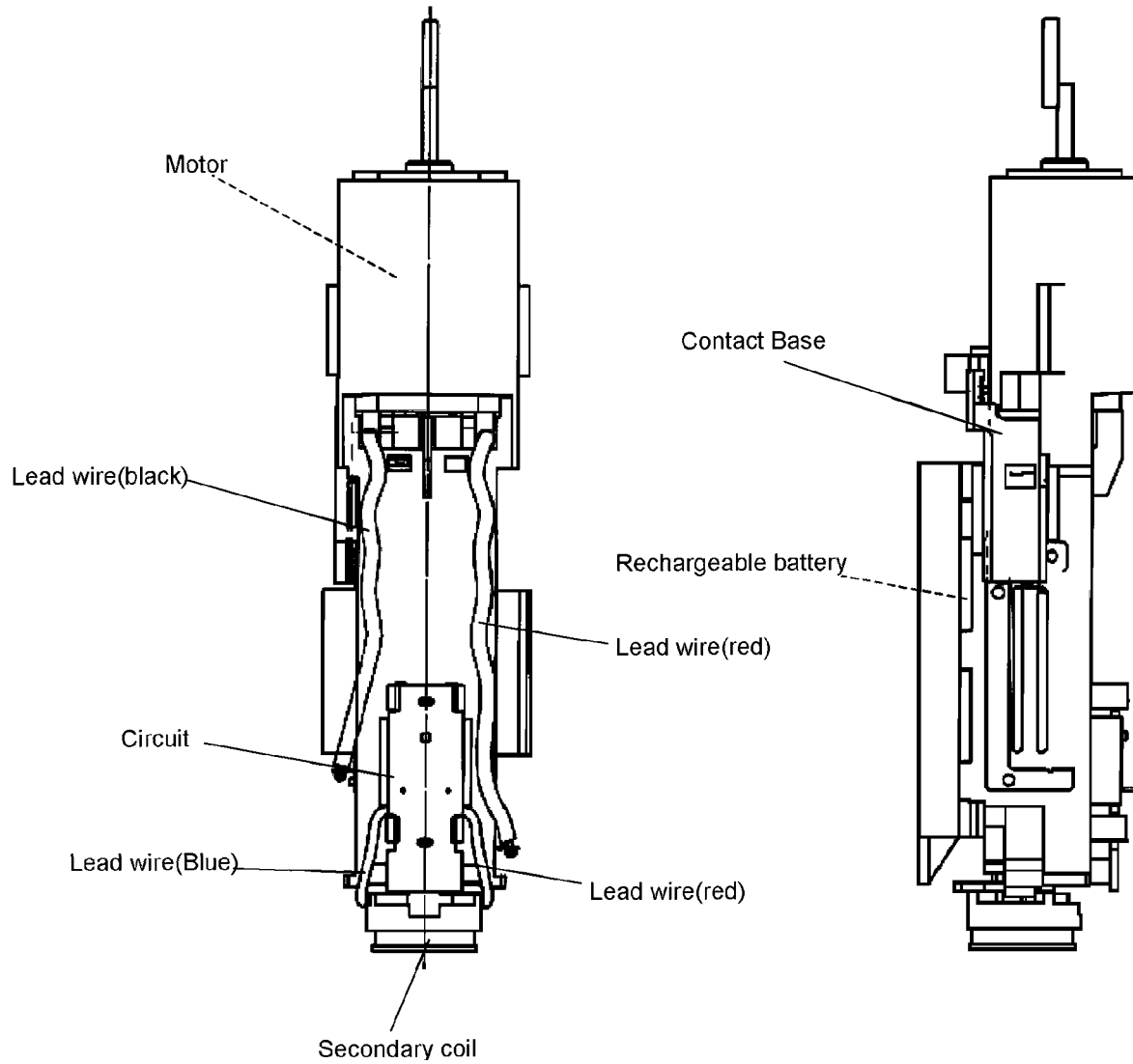
• How to drain the water from the Pump

1. Turn the Switch on and shake the Main body approximately ten times to drain the water.

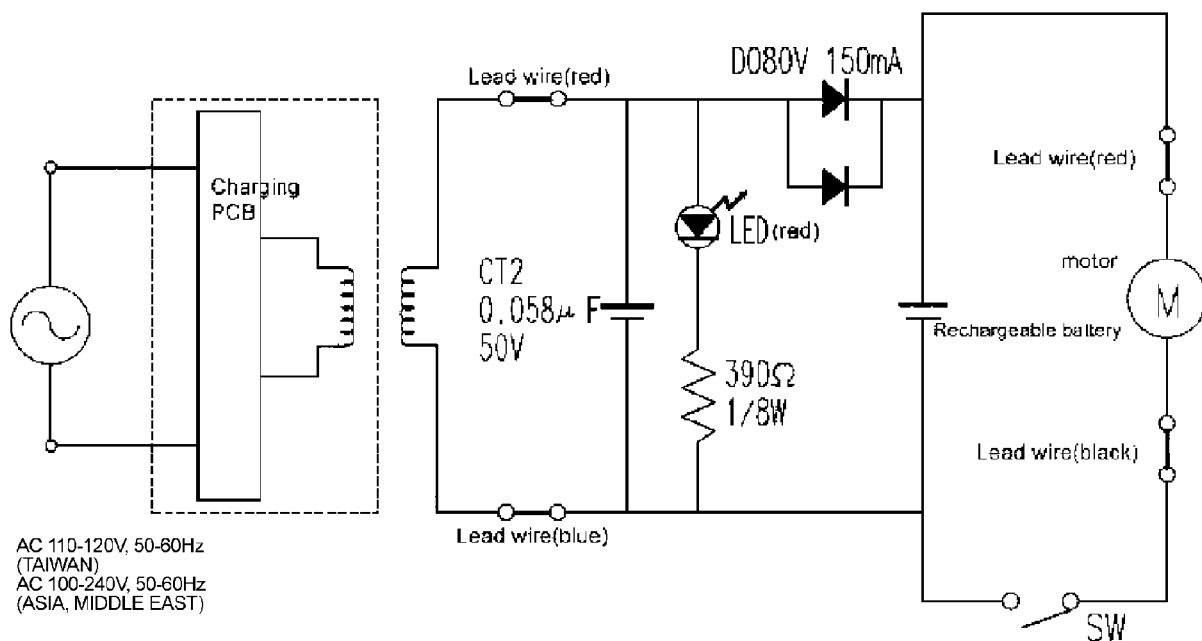
2. Drain the water from the Tank, and dry it by unplugging the tank sealing.

3. Wipe the Main body and the Cup with a tissue or swabs. Especially, wipe the inside the Cup thoroughly.

4 Wiring Connection Diagram

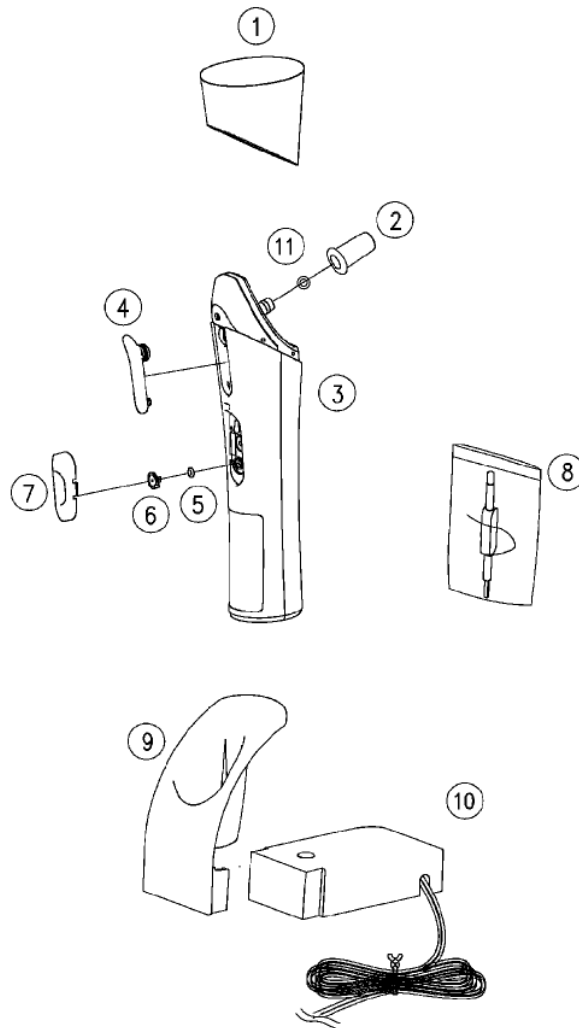


5 Schematic Diagram



6 Exploded View and Replacement Parts List

Model No. : EH2513 Exploded View



All parts are supplied from PEW-Thailand through PLGA

Model No. : EH2513 Parts List

Safety	Ref. No.	Part No.	Part Name & Description	Q'ty	Remarks
	1	EH2513CCGW	CAP COVER ASS'Y	1	(GREEN)
	2	EH2513ATGW	ATTACHMENT	1	(GREEN)
	3	EH2513MBDG1W	MAIN BODY ASS'Y	1	(GREEN), (TAIWAN)
	3	EH2513MBDG2W	MAIN BODY ASS'Y	1	(GREEN), (OTHERS)
	4	EH2513TSWW	TANK SEALING	1	(WHITE)
	5	EH2513ORSW	O-RING (SWITCH)	1	
	6	EH2513SCTW	SWITCH CAM	1	
	7	EH2513SWBWW	SWITCH BUTTON ASS'Y	1	(WHITE)
	8	EH2513MRTW	MIST ROD ASS'Y	1	
	9	EH2513STPWW	STAND PANEL	1	(WHITE)
	10	EH2513CRW1W	CHARGER STAND ASS'Y	1	(WHITE), (TAIWAN)
	10	EH2513CRWC2W	CHARGER STAND ASS'Y	1	(WHITE), (OTHERS)
	11	EH2513ORATW	O-RING (ATTACHMENT)	1	
		EH2513S01UGW	INDIVIDUAL PACKGE	1	
		EH2513S03UW	INSTRUCTION BOOKLET	1	
		EH2513S09W	FILLER FOR PACKAGE	1	