

Service Manual

IPL HAIR REMOVAL SYSTEM

Model No. ES-WH90

Europe
CIS
Middle East
Asia



⚠ WARNING

This service information is designed for experienced repair technicians only and is not designed for use by the general public. It does not contain warnings or cautions to advise non-technical individuals of potential dangers in attempting to service a product. Products powered by electricity should be serviced or repaired only by experienced professional technicians. Any attempt to service or repair the product or products dealt with in this service information by anyone else could result in serious injury or death.

IMPORTANT SAFETY NOTICE

There are special components used in this equipment which are important for safety. These parts are marked by **⚠** in the Schematic Diagrams, Circuit Board Diagrams, Exploded Views and Replacement Parts List. It is essential that these critical parts should be replaced with manufacturer's specified parts to prevent shock, fire or other hazards. Do not modify the original design without permission of manufacturer.

•The specifications and the parts of this product are subject to change without notice for performance improvement or other purposes.

TABLE OF CONTENTS

	PAGE	PAGE
1 Warning-----	2	
2 Specifications -----	2	
3 Troubleshooting Guide-----	3	
4 Disassembly and Assembly Instructions -----	5	
5 Exploded View and Replacement Parts List -----	6	

Panasonic

© Panasonic Corporation, 2016. All rights reserved.
Unauthorized copying and distribution is a violation
of law.

1 Warning

Caution:

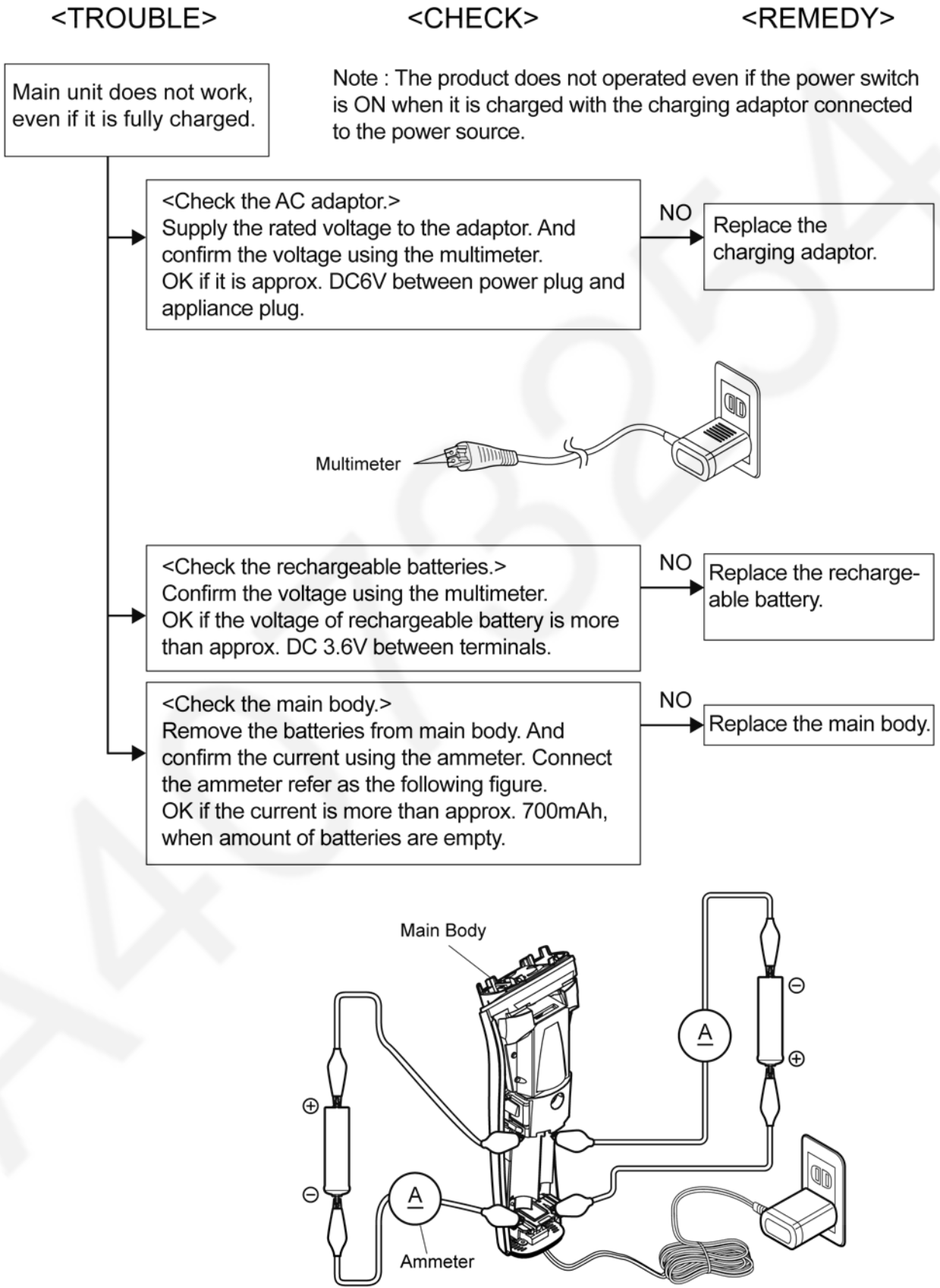
- Pb free solder has a higher melting point than standard solder; Typically the melting point is 50 - 70°F (30 - 40°C) higher. Please use a soldering iron with temperature control and adjust it to 750 ± 20°F (400 ± 10°C). In case of using high temperature soldering iron, please be careful not to heat too long.
- Pb free solder will tend to splash when heated too high (about 1100°F / 600°C).

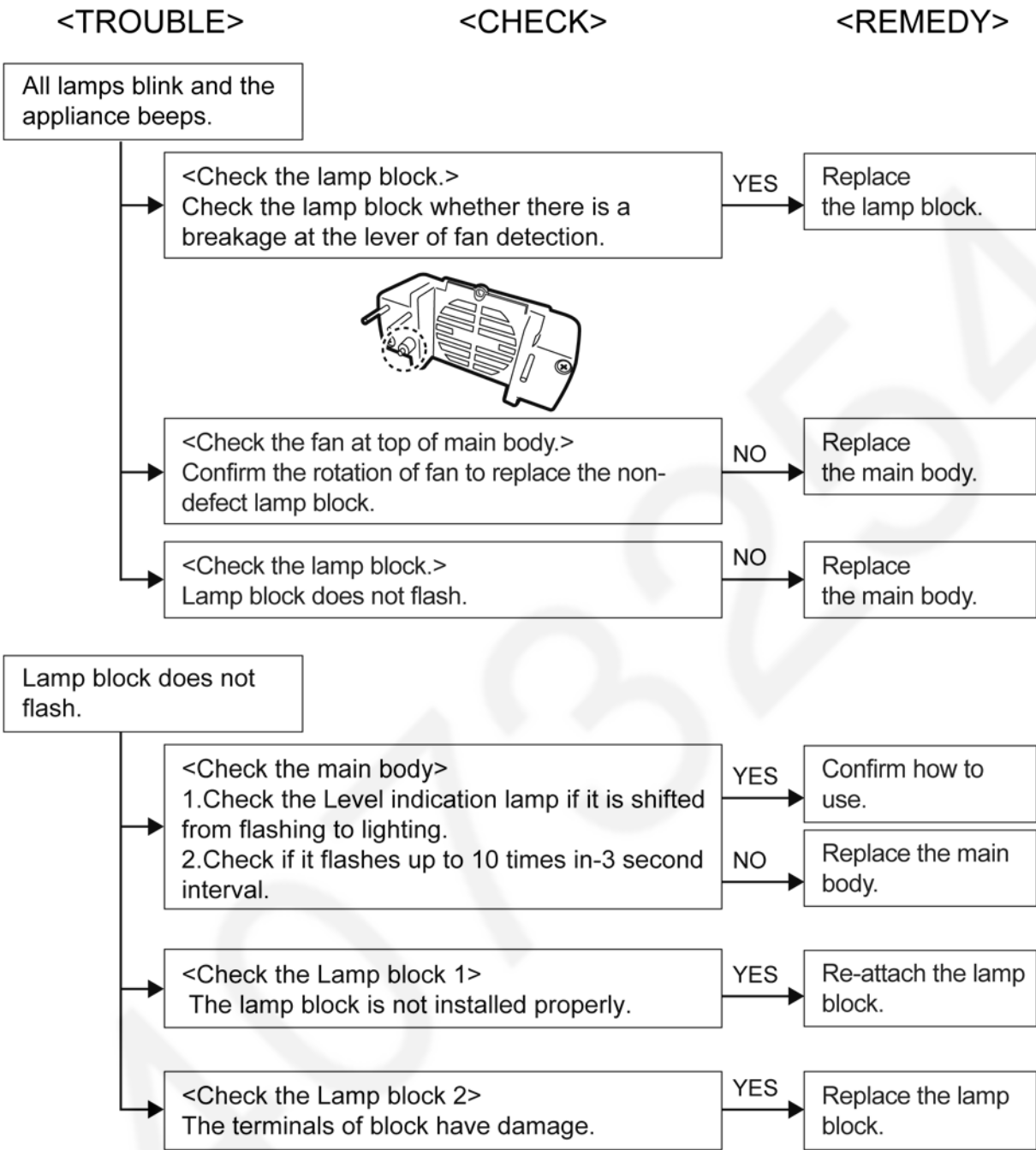
2 Specifications

Power source	100-240V AC, 50-60Hz
Power consumption (when charging)	Approx. 9W
Maximum times of flashing in a full single charge	Approx. 600 flashes
Charging time	Approx. 3 hours
Length of power cord	Approx. 1.8 m
Weight	Approx. 350 g (excluding cap)

3 Troubleshooting Guide

3.1. Main unit and charging adaptor

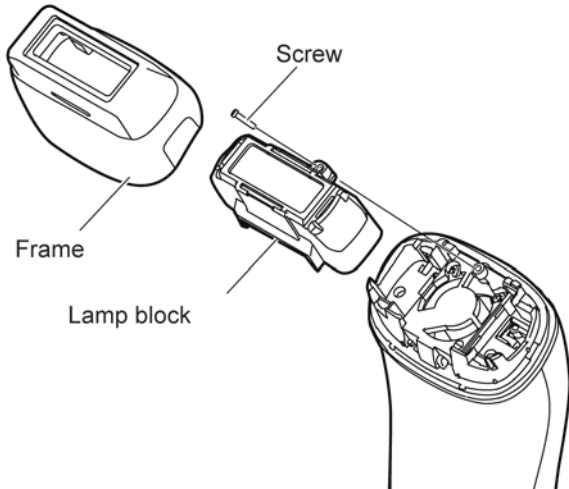




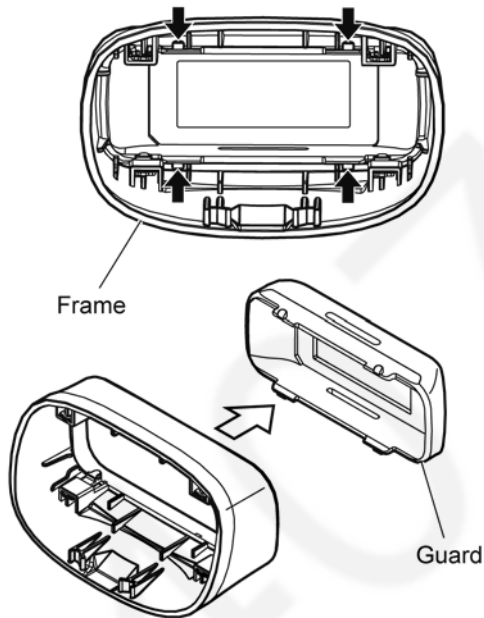
4 Disassembly and Assembly Instructions

4.1. Disassembly method.

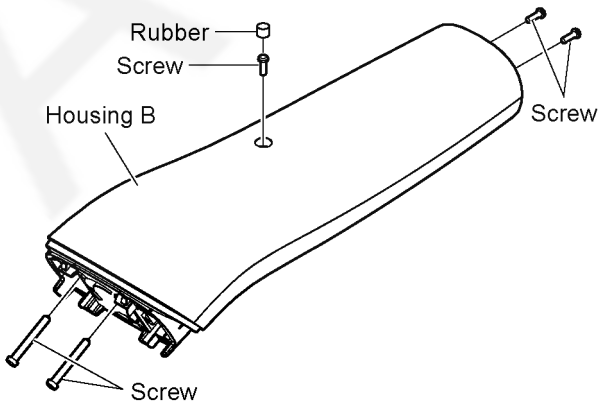
1. Remove the frame, lamp block and screw.



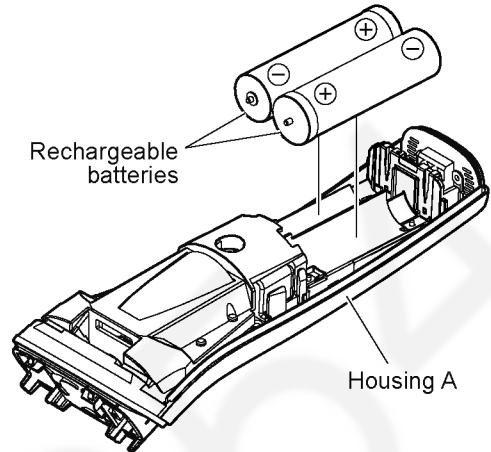
2. Remove the guard from frame by unfastening hooks.



3. Remove the rubber and five screws, and remove the housing B.

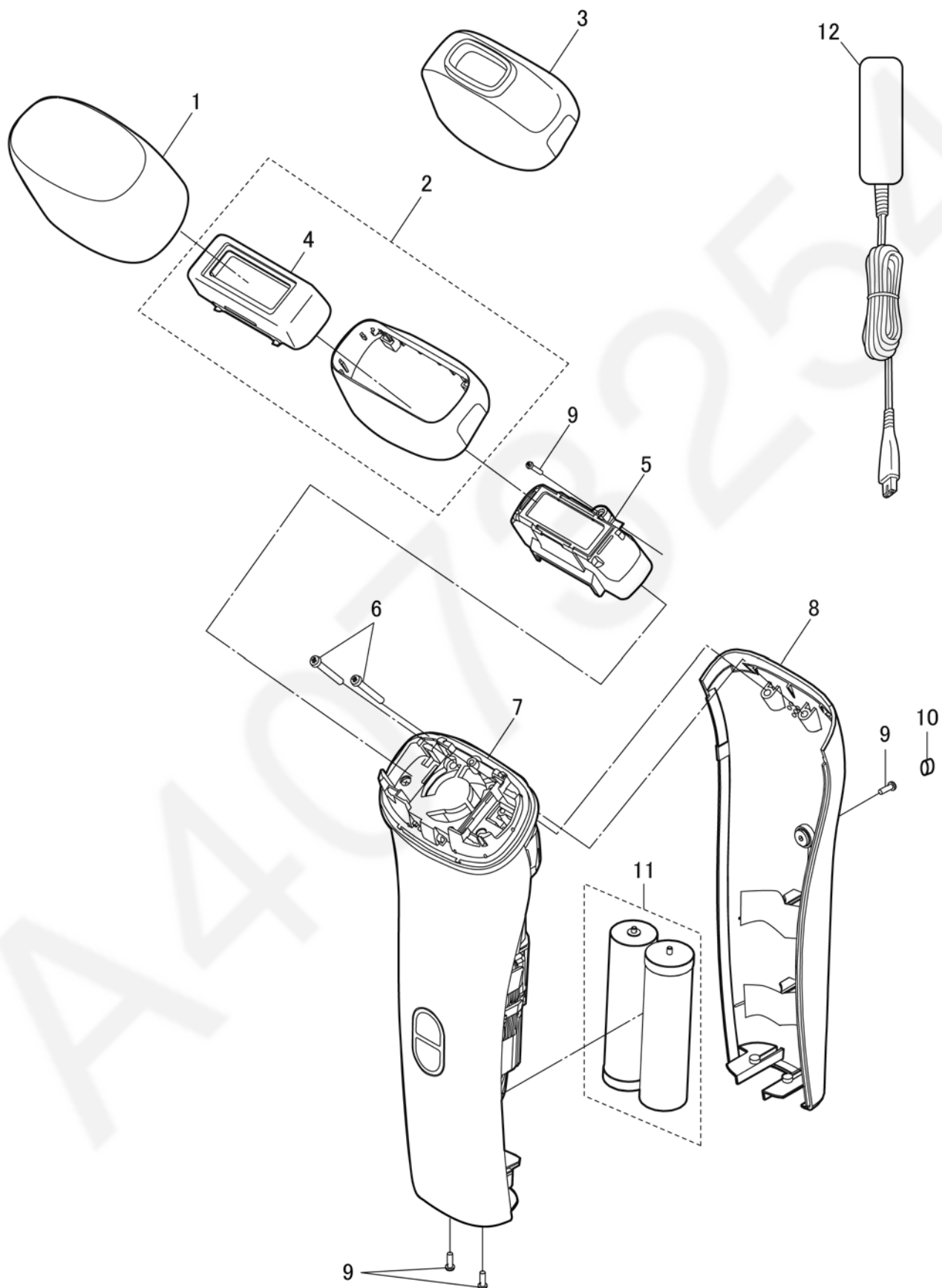


4. Remove the batteries from main body.



5 Exploded View and Replacement Parts List

5.1. Exploded view



5.2. Replacement Parts List

Safety	Ref. No.	Part No.	Part Name & Description	Quantity	Remarks
	1	WESWH93W7157	CAP	1	
	2	WESWH90W3108	BODY ATTACHMENT	1	
	3	WESWH90W3208	FACE ATTACHMENT	1	
	4	WESWH93W3747	GUARD	1	
	5	WESWH90W3218	LAMP BLOCK	1	
	6	WESWH81L6207	SCREW	2	K2.6-20
	7	WESWH90W4008	HOUSING A	1	
	8	WESWH90W3088	HOUSING B	1	EUROPE
	8	WESWH90W3089	HOUSING B	1	RUSSIA
	8	WESWH90W3080	HOUSING B	1	MIDDLE EAST, ASIA
	9	WESWH20L9007	SCREW	4	K2-6
	10	WESWH80X7158	RUBBER	1	
	11	WESWH81L2507	RECHARGEABLE BATTERY	2	LI-ION TYPE
	12	WESWH80W7864	CHARGING ADAPTOR	1	C-2 PLUG, EUROPE
	12	WESWH80W7860	CHARGING ADAPTOR	1	BF-3 PLUG, UK
	12	WESWH80W7661	CHARGING ADAPTOR	1	C-2 PLUG, RUSSIA
	12	WESWH80W7675	CHARGING ADAPTOR	1	BF-3 PLUG, MIDDLE EAST
	12	WESWH80W7663	CHARGING ADAPTOR	1	BF-3 PLUG, ASIA
	-	WESWH90P8008	INDIVIDUAL BOX	1	EUROPE
	-	WESWH90P8002	INDIVIDUAL BOX	1	UK
	-	WESWH90P8009	INDIVIDUAL BOX	1	RUSSIA
	-	WESWH90P8000	INDIVIDUAL BOX	1	MIDDLE EAST
	-	WESWH90P8001	INDIVIDUAL BOX	1	ASIA
	-	WESWH90P8108	OPERATING INSTRUCTIONS	1	EUROPE
	-	WESWH90P8100	OPERATING INSTRUCTIONS	1	RUSSIA
	-	WESWH90P8101	OPERATING INSTRUCTIONS	1	MIDDLE EAST, ASIA