

# Service Manual

Facial Ionic Steamer

Model No. **EH-SA31**

Asia



## **⚠ WARNING**

This service information is designed for experienced repair technicians only and is not designed for use by the general public. It does not contain warnings or cautions to advise non-technical individuals of potential dangers in attempting to service a product. Products powered by electricity should be serviced or repaired only by experienced professional technicians. Any attempt to service or repair the product or products dealt with in this service information by anyone else could result in serious injury or death.

## **IMPORTANT SAFETY NOTICE**

There are special components used in this equipment which are important for safety. These parts are marked by **⚠** in the Schematic Diagrams, Circuit Board Diagrams, Exploded Views and Replacement Parts List. It is essential that these critical parts should be replaced with manufacturer's specified parts to prevent shock, fire or other hazards. Do not modify the original design without permission of manufacturer.

## **TABLE OF CONTENTS**

	PAGE	PAGE
<b>1 Warning</b> -----	<b>2</b>	
<b>2 Specifications</b> -----	<b>2</b>	
<b>3 Troubleshooting Guide</b> -----	<b>3</b>	
<b>4 Disassembly and Assembly Instructions</b> -----	<b>4</b>	
<b>5 Exploded View and Replacement Parts List</b> -----	<b>6</b>	

# 1 Warning

## Caution:

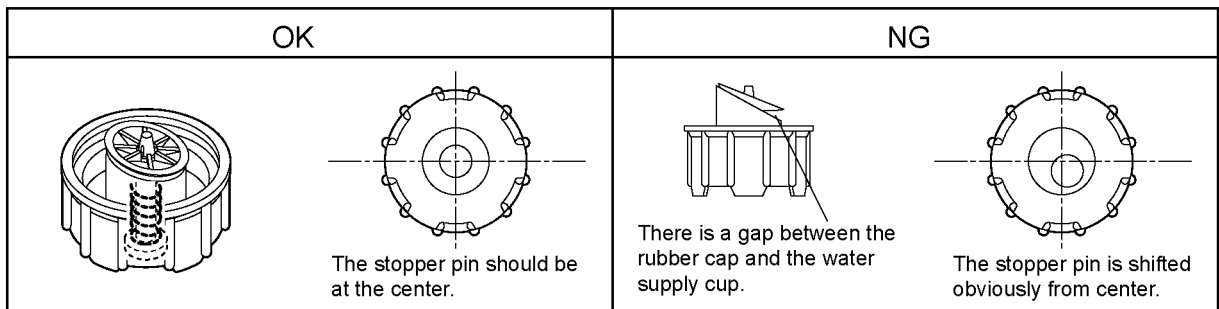
- Pb free solder has a higher melting point than standard solder; Typically the melting point is 50 - 70°F (30 - 40°C) higher. Please use a soldering iron with temperature control and adjust it to 750 ± 20°F (400 ± 10°C). In case of using high temperature soldering iron, please be careful not to heat too long.
- Pb free solder will tend to splash when heated too high (about 1100°F / 600°C).

# 2 Specifications

Power source	AC 220-240V 50-60Hz
	AC 220V 50-60Hz (Only for Korea)
	AC 110V 60Hz (Only for Taiwan)
Power consumption	290W
Steam discharge rate	Approx. 6 ml/min
Steam temperature	Approx. 40°C (at a distance of approx. 20cm from edge of the nozzle)

# 3 Troubleshooting Guide

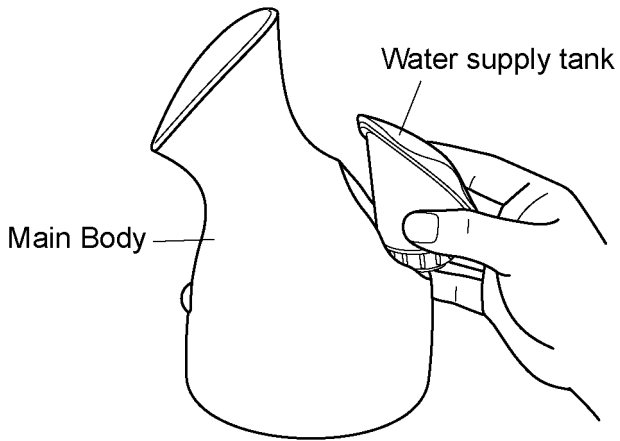
<TROUBLE>	<CHECK.>	<REMEDY>
Steam does not come out, or a small amount of steam comes out.	<p align="center">&lt;CHECK POWER CORD.&gt;</p> Check the conductivity of the power cord.	NO → Replace the power cord. OK → Replace the boiler block
It is not ionized.	<p align="center">&lt;CHECK HIGH VOLTAGE UNIT.&gt;</p> It is OK if the electric discharge sound is heard from the high voltage unit.	NO → Replace the boiler block
Beads of hot water are released.	<p align="center">&lt;CHECK WATER THAT YOU ARE USING.&gt;</p> Use only distilled water or tap water. Do not use the mineral water, lotion and so on.	NO → Replace the boiler block
↓ OK		
	<p align="center">&lt;CHECK INSIDE OF NOZZLE.&gt;</p> Check if there is the dust or something clogged inside of nozzle.	YES → Remove the foreign object inside of nozzle.
↓ OK		
	<p align="center">&lt;CHECK ABSORBENT FELT.&gt;</p> Check if there is the rugged on the surface of absorbent felt.	YES → Remove the absorbent felt. NO → Replace the boiler block
The water leaks out from the main body.	<p align="center">&lt;CHECK WATER SUPPLY TANK.&gt;</p> Check if there is the gap or pinhole in the water supply tank.	YES → Replace the water supply tank
↓ OK		
	<p align="center">&lt;CHECK CAP OF WATER SUPPLY TANK. No.1&gt;</p> Check whether the rubber cup is set properly without transformation nor twist.	NO → Reset the rubber cap properly. Or replace the water supply cap.
↓ OK		
	<p align="center">&lt;CHECK CAP OF WATER SUPPLY TANK. No.2&gt;</p> Check if there is the dust or something clogged on or under rubber cup.	YES → Remove the dust or something clogged.
↓ OK		
	<p align="center">&lt;CHECK CAP OF WATER SUPPLY TANK. No.3&gt;</p> Check if the stopper pin and the stopper spring operates up and down smoothly.	NO → Replace the water supply tank



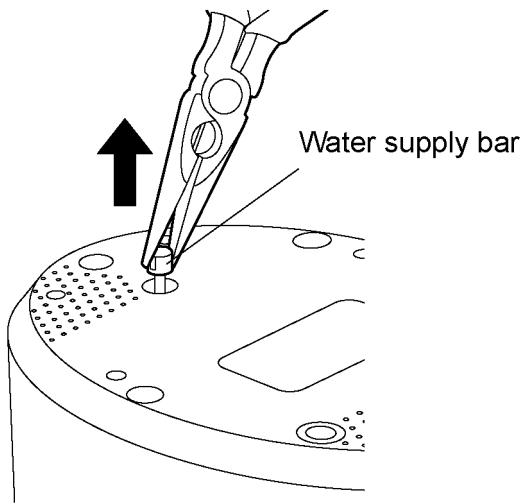
# 4 Disassembly and Assembly Instructions

## 4.1. DISASSEMBLY INSTRUCTIONS

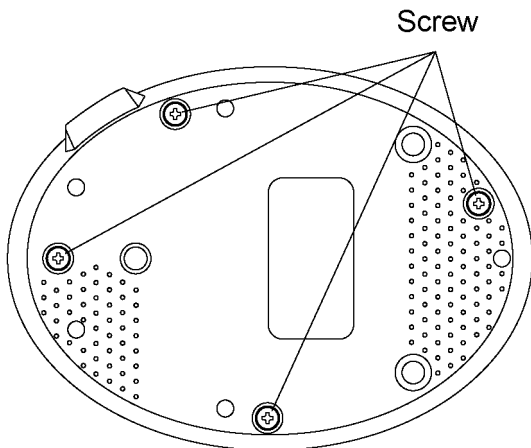
1. Remove the water supply tank.



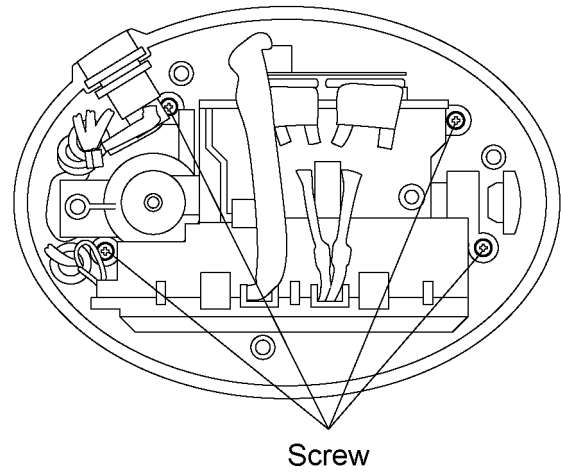
2. Take off the cover of water supply bar from bottom side.



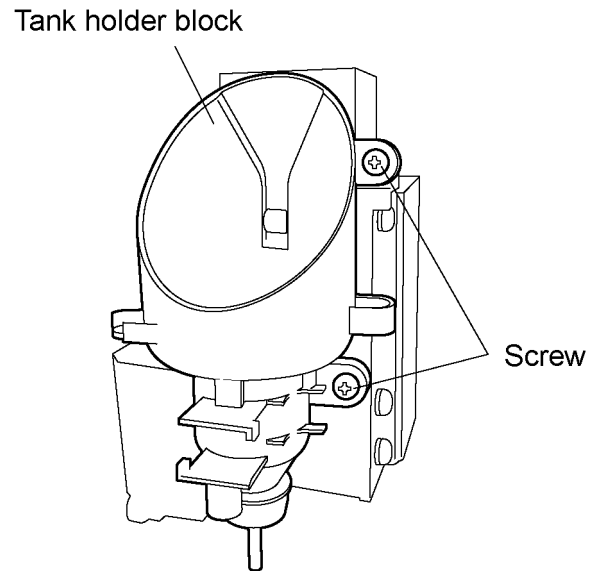
3. Loosen four screws from bottom cover.



4. Loosen four screws and remove the boiler block.

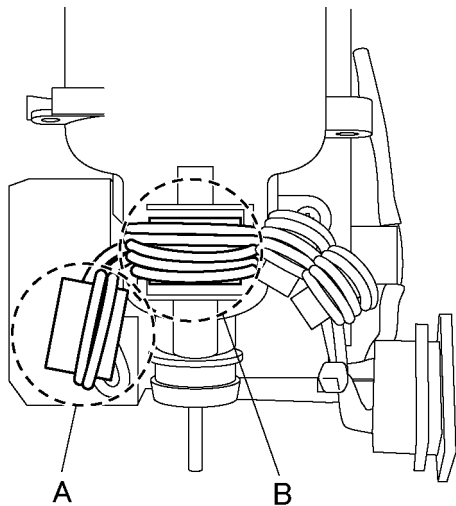


5. Loosen two screws and remove the boiler block.

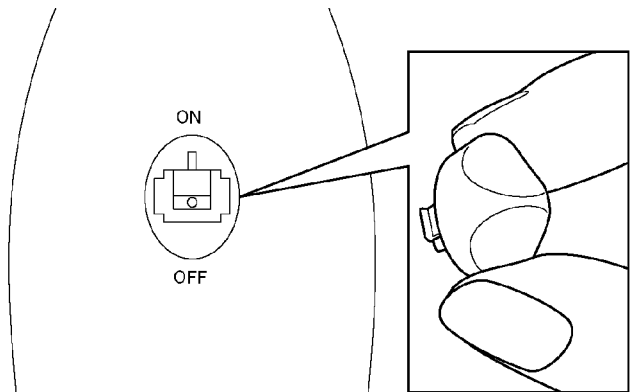


## 4.2. CAUTION ASSEMBLY

1. Allocate two ferrite cores to A and B positions.



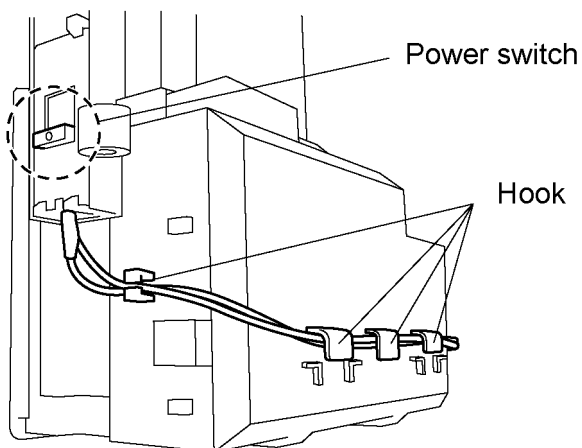
3. Set the power switch button after insert the boiler block into housing.



2. Insert the boiler block into housing.

**Note :**

Allocate the power switch to OFF position.  
Store the lead wires into the hooks.

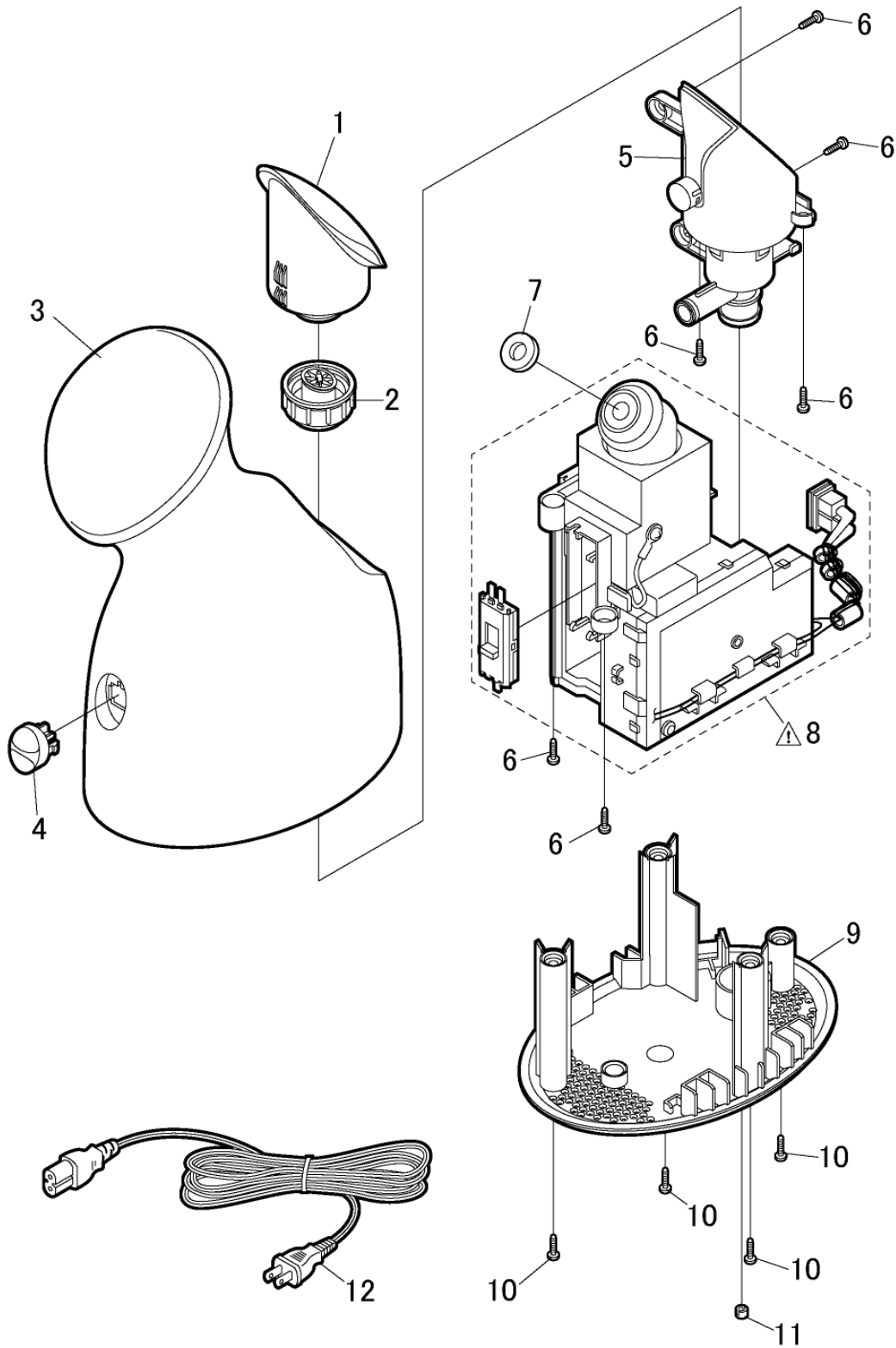


## 4.3. CHECKING AFTER REPAIR

- Pour water into the water supply tank full and turn on the switch. Check if the ionized steam comes out in approximately 30 seconds.
- Check if the ion steam comes out for approximately 12 minutes and beads of hot water are not released.
- No leakage.
- No scratches.

# 5 Exploded View and Replacement Parts List

Model No. : EH-SA31 Exploded View



## Model No. : EH-SA31 Parts List

Safety	Ref. No.	Part No.	Part Name & Description	Q'ty	Remarks
	1	WEHSA31W7857	WATER SUPPLY TANK	1	
	2	WEHSA31W3187	WATER SUPPLY CAP	1	
	3	WEHSA31P3068	HOUSING BLOCK	1	(Only for Hong Kong)
	3	WEHSA31P3069	HOUSING BLOCK	1	(Only for Taiwan)
	3	WEHSA31P3060	HOUSING BLOCK	1	(Only for Korea)
	4	WEHSA31W3597	SWITCH BUTTON	1	
	5	WEHSA31W3207	TANK HOLDER BLOCK	1	
	6	WEH246S9097	SCREW	6	(K4-10)
	7	WEH2424W0517	ABSORBENT FELT	1	
	8	WEHSA31L4437	BOILER BLOCK	1	
	8	WEHSA31L4438	BOILER BLOCK	1	(Only for Taiwan)
	9	WEHSA31W3048	BOTTOM COVER	1	(Only for Hong Kong)
	9	WEHSA31W3049	BOTTOM COVER	1	(Only for Taiwan)
	9	WEHSA31W3040	BOTTOM COVER	1	(Only for Korea)
	10	WEH2461S6237	SCREW	4	(K4-10)
	11	WEH2471W0057	SLANT DETECTOR COVER	1	
	12	WEHSA31H2058	POWER CORD	1	(Only for Hong Kong)
	12	WEHSA31H2059	POWER CORD	1	(Only for Taiwan)
	12	WEHSA31H2050	POWER CORD	1	(Only for Korea)
	-	WEHSA31P8008	INDIVIDUAL BOX	1	(Only for Hong Kong)
	-	WEHSA31P8009	INDIVIDUAL BOX	1	(Only for Taiwan)
	-	WEHSA31P8000	INDIVIDUAL BOX	1	(Only for Korea)
	-	WEHSA31P8108	OPERATING INSTRUCTIONS	1	
	-	WEHSA31P8109	OPERATING INSTRUCTIONS	1	(Only for Taiwan)