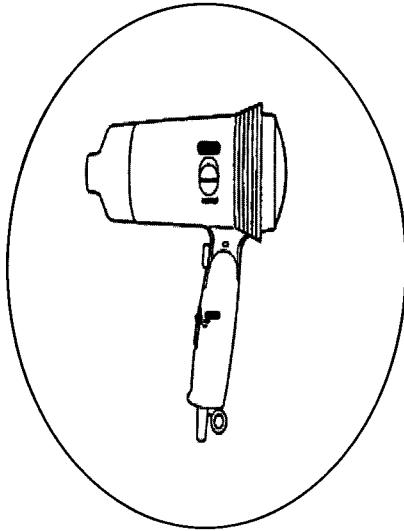


Service Manual

Hair Dryer

EH5944



SPECIFICATIONS

Power source	AC220, 230, 240V/50-60Hz (Separately available)	Air flow velocity	13.5m/s(Turbo)
Power consumption	2/Turbo/Normal 220V 1320W 230V 1440W 240V 1560W 2/Low/Normal 220V 650W 230V 710W 240V 770W	Air volume	1.4m ³ /min(Turbo)
		Air flow temperature	125°C(240V-2/Turbo/Normal) 130°C(240V-2/High/Normal) (in case of room temperature 30°C)
		Cord length	1.70m
		Weight	410g(with nozzle)

⚠ WARNING

This service literature is designed for experienced repair technicians only and is not designed for use by the general public. It does not contain warnings or cautions to advise non-technical individuals of potential dangers in attempting to service a product. Products powered by electricity should be serviced or repaired only by experienced professional technicians. Any attempt to service or repair the product or products dealt with in this service information by anyone else could result in serious injury or death.

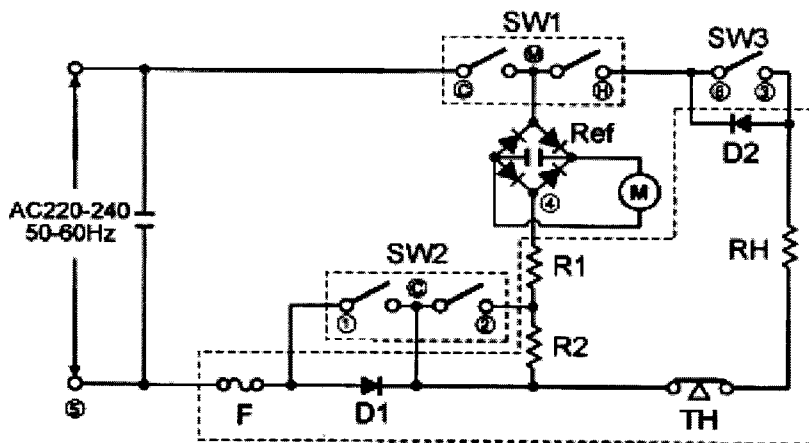
CONTENTS

	Page		Page
1 SCHEMATIC DIAGRAM.....	2	4 TROUBLESHOOTING GUIDE.....	5
2 WIRING CONNECTION DIAGRAM.....	2	5 EXPLODED VIEW & REPLACEMENT PARTS LIST.....	6
3 DISASSEMBLY / ASSEMBLY INSTRUCTION.....	3		

Panasonic

©2001 Matsushita Electric Works(Thailand), Ltd.
All rights reserved. Unauthorized copying and distribution is a violation of law.

1 SCHEMATIC DIAGRAM



○ CLOSE
 × OPEN

SW3(Temperature Control Switch)

	3-6
NORMAL	○
HEALTHY	×

SW2(Speed Selector Switch)

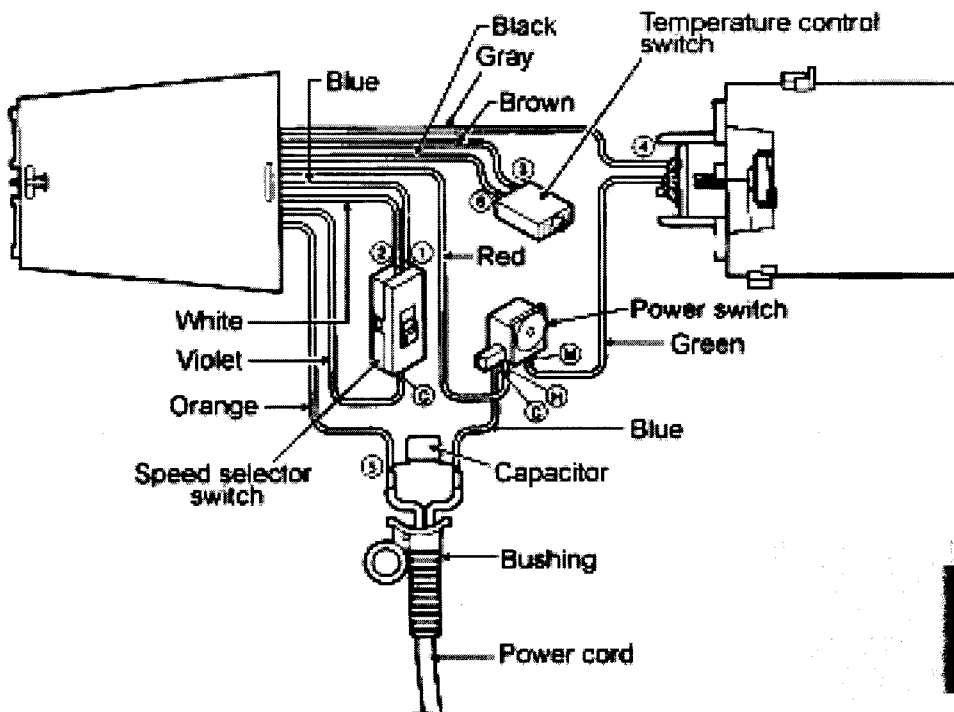
	C-1	C-2
LOW	×	×
HIGH	○	×
TURBO	○	○

SW1(Power Switch)

	M-C	M-H
0	×	×
2	○	○
1	○	×

Ref	CAPACITOR	50V, 0.1 μF	SW3	TEMPERATURE CONTROL SWITCH	125V, 13A
SW1	POWER SWITCH	125V, 13A / 250V, 6.5A	D1, D2	DIODE	1000V, 5A
Ref	RECTIFIER	100V, 1A	F	THERMAL CUT OFF	250V, 12A 142°C
M	MOTOR	40V, 550mA	RH	RESISTANCE WIRE	39 Ω
SW2	SPEED SELECTOR SWITCH	125V, 13A / 250V, 6.5A	R1 + R2	VOLTAGE DROPPING RESISTO	39 Ω R1=358 Ω R2=410 Ω
C	CAPACITOR	250V, 0.1 μF (220V, KOREA)	TH	TEMPERATURE LIMITER	250V, 6A. 120°C

2 WIRING CONNECTION DIAGRAM



3 DISASSEMBLY / ASSEMBLY INSTRUCTIONS

- (1) Assemble the heater block and motor block, and attach them into the housing B.
- (2) Attach the main switch push button, and insert the lead wire violet, blue, white, red, orange, green, and blue (from power cord) into housing B as shown in Fig.1.

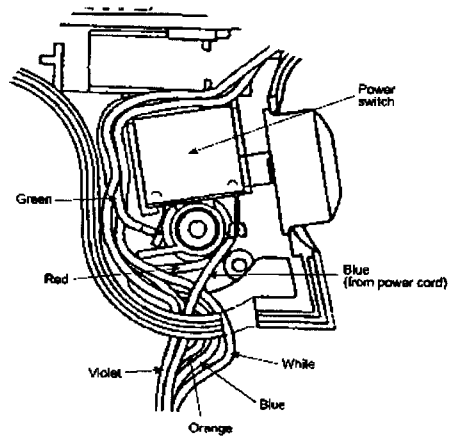


Fig.1

- (1) Insert the white, yellow, orange lead wires of selector switch, and blue, red lead wires of power cord into the housing B as shown in Fig.2.

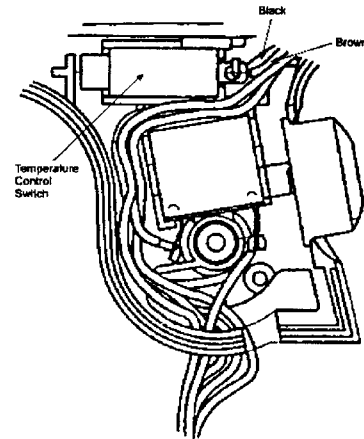


Fig.2

- (1) Assemble the housing A and B by snapping the hook as shown in Fig.3.

NOTE : Be sure not to be pinched the lead wire between the housing AB.

- (2) Assemble the air outlet grill and air outlet ring, and insert them into the housing AB.

NOTE : The outlet ring should be inserted with the projection point to bottom side.

- (3) Insert the air inlet block into the housing AB.

NOTE : Match the screw holes of air inlet block and housing B.

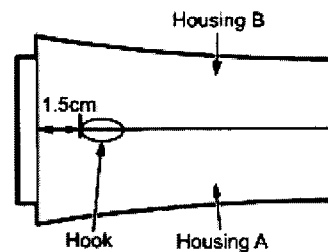


Fig.3

- (1) Attach the swivel ring as shown in Fig.4.
- (2) Assemble the handle B into the housing AB block as shown in Fig.4.
- (3) Insert the high/low switch plate into handle B as shown in Fig.4.

NOTE : The high/low switch plate should be inserted in the low position.

- (4) Insert the selector switch, next power cord, Insert each lead wire into the handle B as shown in Fig.4.
- (5) Insert the cord bushing into handle B as shown in Fig.4.
- (6) Assemble the handle.
- (7) Fasten the 2 screws for handle, and 1 screw for housing AB.

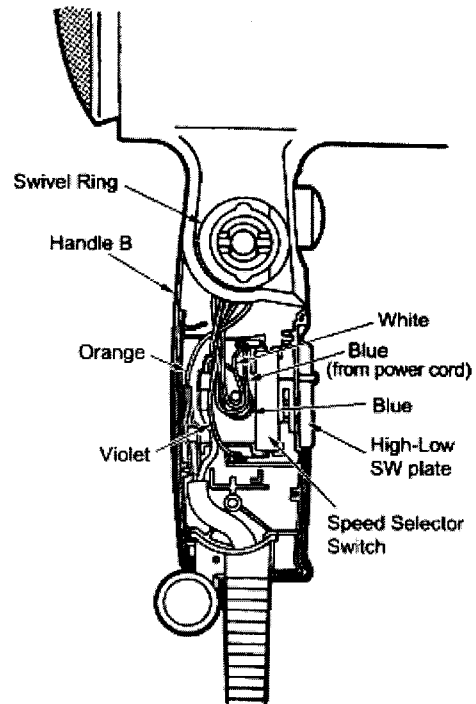


Fig.4

- (1) Remove tapping screw 2.6-6.
- (2) Insert the tip of small flat screwdriver between housing & air inlet block as shown in Fig.5. Then try to open the housing and remove air inlet block. Take care not to scratch the housing.
- (3) Remove screw 3-12 and remove handle.
- (4) Remove housing AB.

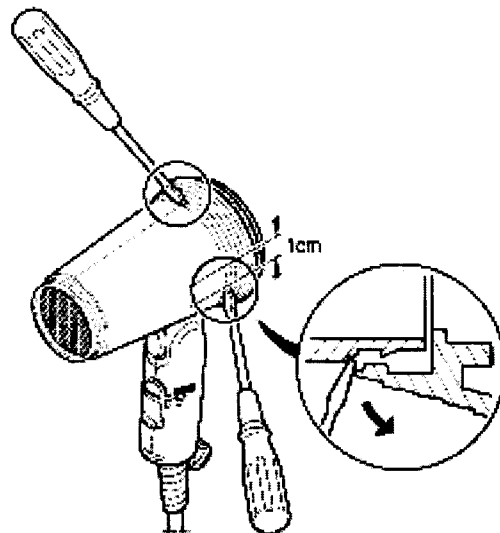
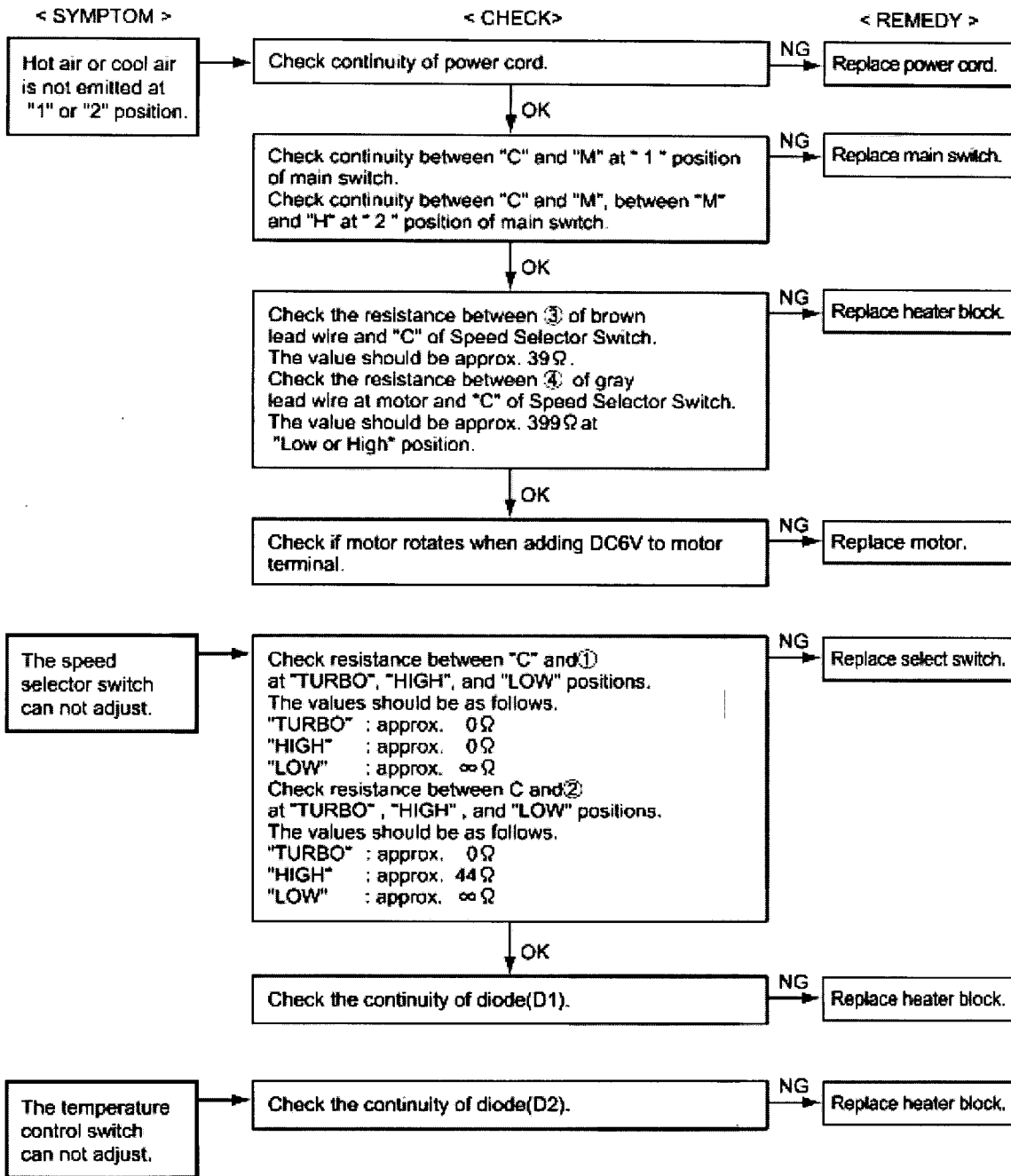


Fig.5

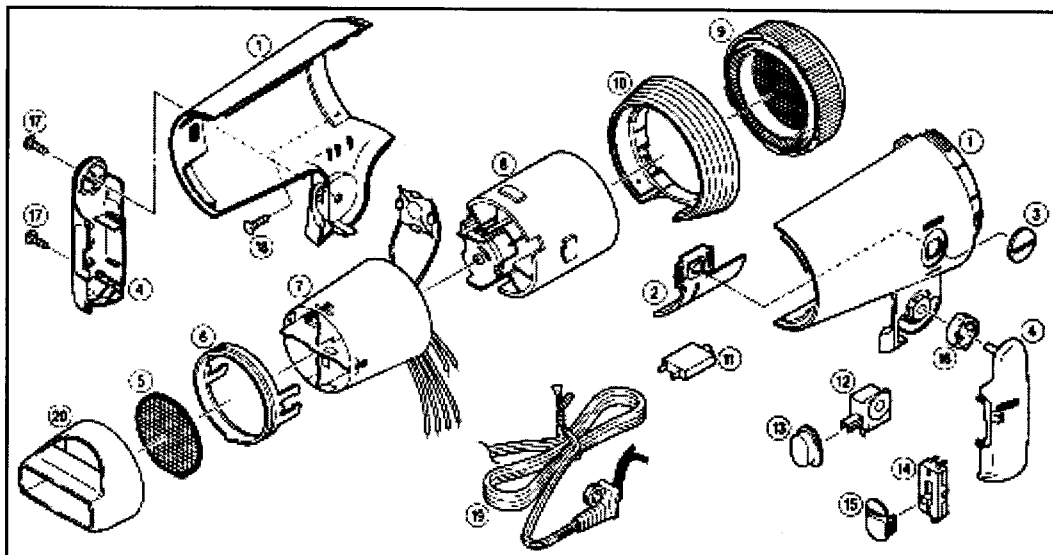
4 TROUBLESHOOTING GUIDE

Refer to WIRING CONNECTION DIAGRAM.



5 EXPLODED VIEW & REPLACEMENT PARTS LIST

5.1 EXPLODED VIEW



REPLACEMENT PARTS PRICE LIST

MODEL: EH5944*S

RMKS: *1= Available individually

ran
29-NOV-07

Ref. No.	Parts No.	Parts Name & Descriptions	Per Unit	RMKS
1	EH5944HSS2W	HOUSING AB ASS'Y	1	OTHERS
1	EH5944HSS3W	HOUSING AB ASS'Y	1	S'PORE,HK
1	EH5944HSS7W	HOUSING AB ASS'Y	1	KOREA
2	EH5944HSLWW	HEALTHY SWITCH LEVER	1	WHTIE
3	EH5944HSPHW	HEALTHY SWITCH PLATE	1	L/GRAY
4	EH5944HDHW	HANDLE AB	1	L/GRAY
5	EH5944AOBW	AIR OUTLET GRILL	1	
6	EH5944AORW	AIR OUTLET RING	1	
7	EH5944HBW	HEATER BLOCK ASS'Y	1	
8	EH5944MBW	MOTOR BLOCK ASS'Y	1	
9	EH5944AIAHW	AIR INLET ASS'Y	1	L/GRAY
10	EH5944HSCSW	HOUSING C	1	SILVER
11	EH5944HSW	HEALTH SWITCH	1	
12	EH5944MSW	MAIN SWITCH	1	
13	EH5944MPLHW	MAIN SWITCH PUSH BUTTON	1	L/GRAY
14	EH5944SSW	SELECT SWITCH	1	
15	EH5944HLSPHW	HIGH LOW SWITCH PLATE	1	L/GRAY
16	EH5944SRTW	SWIVEL RING	1	NATURAL
17	EH5944T0312W	TAPPING SCREW	2	*1
18	EH5944T2660W	TAPPING SCREW	1	
19	EH5944PCHC2W	POWER CORD ASS'Y	1	C2-PLUG,OTHERS
19	EH5944PCHA2W	POWER CORD ASS'Y	1	A2-PLUG,PHILIPPINES
19	EH5944PCS3W	POWER CORD ASS'Y	1	S3-PLUG,S'PORE,HK
19	EH5944PCHB2W	POWER CORD ASS'Y	1	B2-PLUG,KOREA
20	EH5944NZHW	NOZZLE	1	L/GRAY
--	EH5944S09W	FILLER FOR PACKAGE	1	
--	EH5944S01SW	INDIVIDUAL FOR PACKAGE	1	
--	EH5944S03W	INSTRUCTION BOOKLET	1	

RMKS : * 1 Individual Available

All parts are supplied from MEW-Thailand throught PLGA

Parts Change Notice

Model No. EH-5944

Please revise the original parts list in the Service Manual to conform to the change(s) shown herein. If new part numbers are shown, be sure to use them when ordering parts.

Reason for Change		*The circled item indicates the reason. If no marking, see the Notes in the bottom column.				
1.	Improve performance					
2.	Change of material or dimension					
3.	To meet approved specification					
4.	Standardization					
5.	Addition	HEATER BLOCK FOR KOREA				
6.	Deletion					
7.	Correction					
8.	Other					

Interchangeability Code		**The circled item indicates the interchangeability. If no marking, see the Notes in the bottom column.				
	Parts	Set Production				
A	Original	→	Early	Original or new parts may be used in early or late production set. Use original parts until exhausted, then stock new parts.		
	New	→	Late			
B	Original	→	Early	Original parts may be used in early production sets only. New parts may be used in early or late production sets. Use original parts where possible, then stock new parts.		
	New	→	Late			
C	Original	→	Early	New parts only may be used in early or late production sets. Stock new parts.		
	New	→	Late			
D	Original	→	Early	Original parts may be used in early production sets only. New parts may be used in late production sets only. Stock both original and new parts.		
	New	→	Late			
E	Other					

Part Number						
Model No.	Ref. No.	Original Part No.	New Part No.	Notes(***)	Part Name & Descriptions	RMKS
EH-5944	7	-----	EH5944HB7W	5*,C**	HEATER BLOCK ASS'Y	FOR KOREA

File this Parts Change Notice with your copy of the Service Manual.

