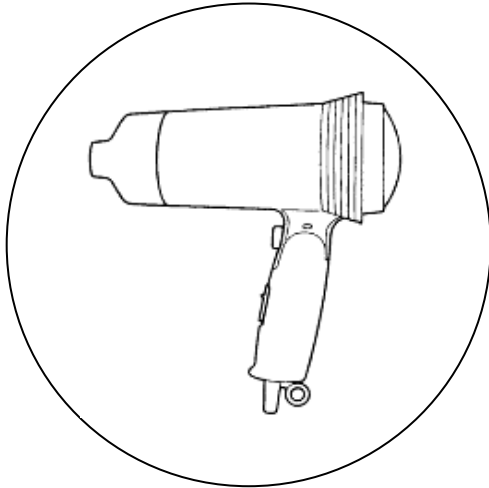


Service Manual

Hair Dryer

EH5934



SPECIFICATIONS

Power source	AC110, 220, 230, 240V/50-60Hz (Separately available)	Air flow velocity	13.5m/s (Turbo)
Power consumption	2/Turbo 110V, 230V 1200W 220V 1100W 240V 1300W 2/Low 110V, 230V 585W 220V 535W 240V 635W	Air volume	1.1m ³ /min(Turbo)
		Air flow temperature	115°C (Turbo), 120°C (High) 90°C (Low) (in case of room temperature 30°C)
		Cord length	1.70m
		Weight	410g(with nozzle)

⚠ WARNING

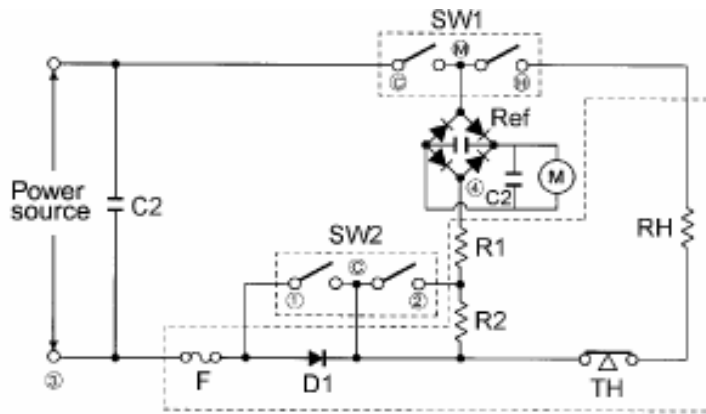
This service literature is designed for experienced repair technicians only and is not designed for use by the general public. It does not contain warnings or cautions to advise non-technical individuals of potential dangers in attempting to service a product. Products powered by electricity should be serviced or repaired only by experienced professional technicians. Any attempt to service or repair the product or products dealt with in this service information by anyone else could result in serious injury or death.

CONTENTS

	Page		Page
1 SCHEAMATIC DIAGRAM.....	2	4 TROUBLESHOOTING GUIDE.....	5
2 WIRING CONNECTION DIAGRAM.....	2	5 EXPLODED VIEW & REPLACEMENT PARTS LIST.....	6
3 DISASSEMBLY / ASSEMBLY INSTRUCTION....	3		

© 2001 Matsushita Electric Works(Thailand), Ltd.
All rights reserved. Unauthorized copying and distribution is a violation of law.

1 SCHEMATIC DIAGRAM



○ CLOSE
 × OPEN

SW2(Speed Selector Switch)

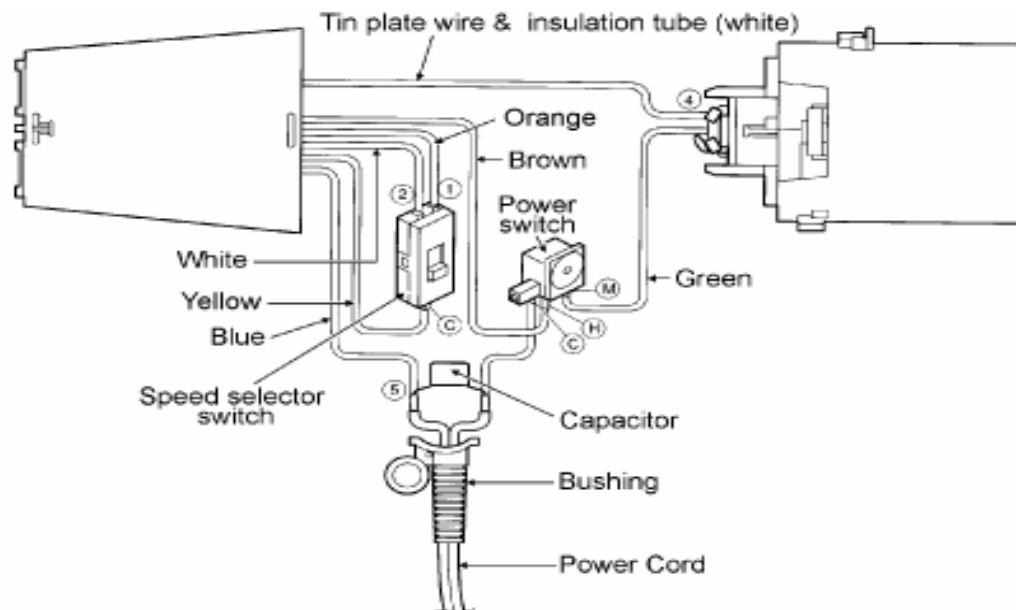
	C-1	C-2
LOW	×	×
HIGH	○	×
TURBO	○	○

SW1(Power Switch)

	M-C	M-H
0	×	×
2	○	○
1	○	×

RH	HEATER COIL (220-240V) 47 Ω (110V) 10 Ω	R1 ↓ R2	VOLTAGE DROP RESISTOR (220-240V) 596 Ω R1=492 Ω R2=104 Ω (110V) 258 Ω R1=210 Ω R2=48 Ω
C2	CAPACITOR (220V KOREA) 250V, 0.1 μF (100V) 125V, 0.1 μF	D	DIODE 500V, 5A
C1	CAPACITOR 50V, 0.033F	F	TEMPERATURE FUSE 250V, 12A, 142°C
SW1	POWER SWITCH 125V, 13A / 250V, 6.5A	TH	THERMO SWITCH 250V, 6A, 120°C
Ref	RECTIFIER 280V, 1.5A	SW2	SPEED SELECTOR SWITCH 125V, 13A / 250V, 6.5A
		M	MOTOR 24V, 510mA

2 WIRING CONNECTION DIAGRAM



3 DISASSEMBLY / ASSEMBLY INSTRUCTIONS

- (1) Assemble the heater block and motor block, and attach them into the housing B.
- (2) Attach the main switch push button, and insert the brown and green lead wires into the housing B as shown in Fig.1.

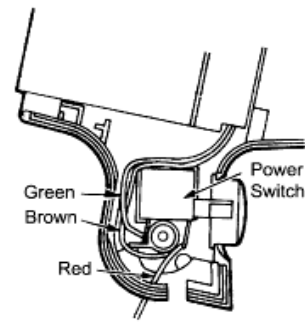


Fig.1

- (1) Insert the white, yellow, orange lead wires of selector switch, and blue, red lead wires of power cord into the housing B as shown in Fig.2.

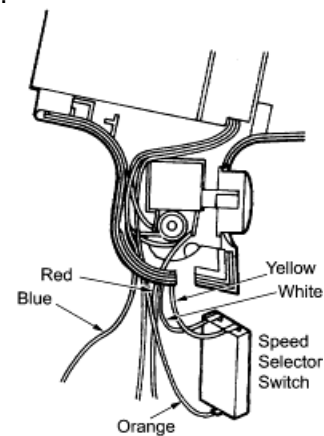


Fig.2

- (1) Assemble the housing A and B by snapping the hook as shown in Fig.3.

NOTE : Be sure not to be pinched the lead wire between the housing AB.

- (2) Assemble the air outlet grill and air outlet ring, and insert them into the housing AB.

NOTE : The outlet ring should be inserted with the projection point to bottom side.

- (3) Insert the air inlet block into the housing AB.

NOTE : Match the screw holes of air inlet block and housing B.

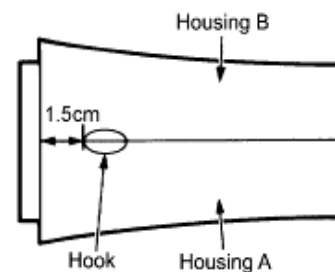


Fig.3

- (1) Attach the swivel ring as shown in Fig.4.
- (2) Assemble the handle B into the housing AB block as shown in Fig.4.
- (3) Insert the high/low switch plate into handle B as shown in Fig.4.

NOTE : The high/low switch plate should be inserted in the low position.

- (4) Insert the selector switch, next power cord, Insert each lead wire into the handle B as shown in Fig.4.
- (5) Insert the cord bushing into handle B as shown in Fig.4.
- (6) Assemble the handle.
- (7) Fasten the 2 screws for handle, and 1 screw for housing AB.

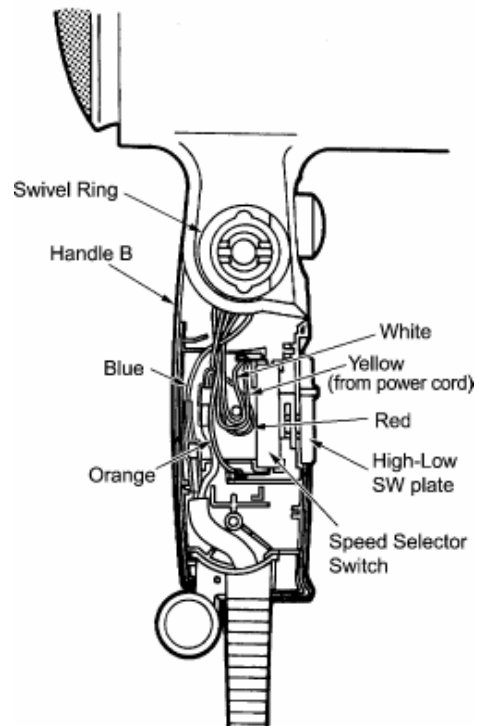


Fig.4

- (1) Remove tapping screw 2.6-6.
- (2) Insert the tip of small flat screwdriver between housing & air inlet block as shown in Fig.5. Then try to open the housing and remove air inlet block. Take care not to scratch the housing.
- (3) Remove screw 3-12 and remove handle.
- (4) Remove housing AB.

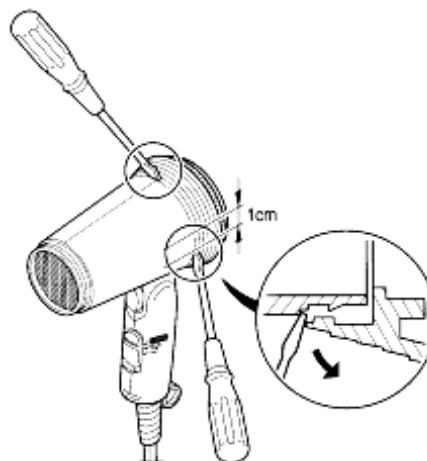
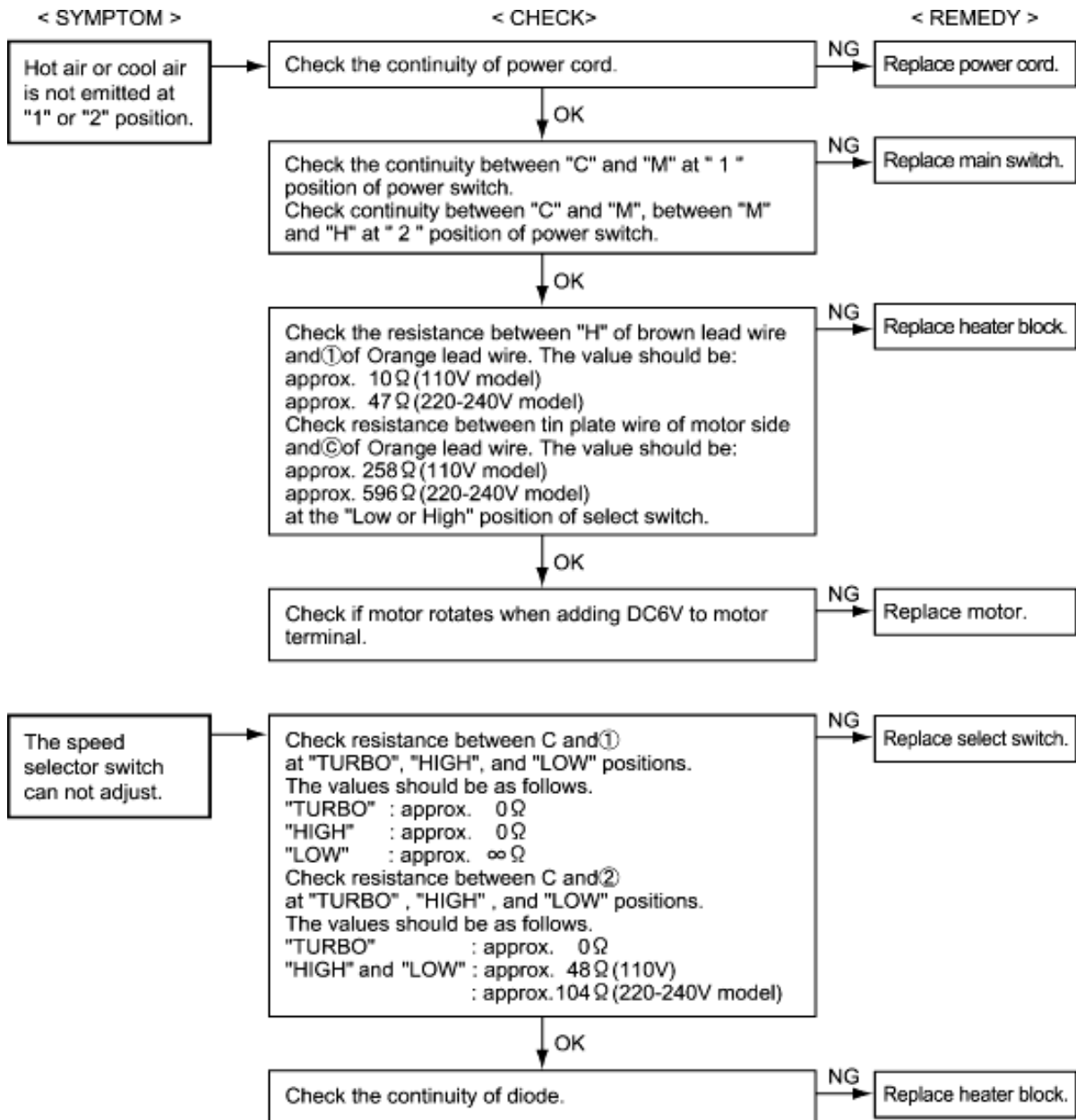


Fig.5

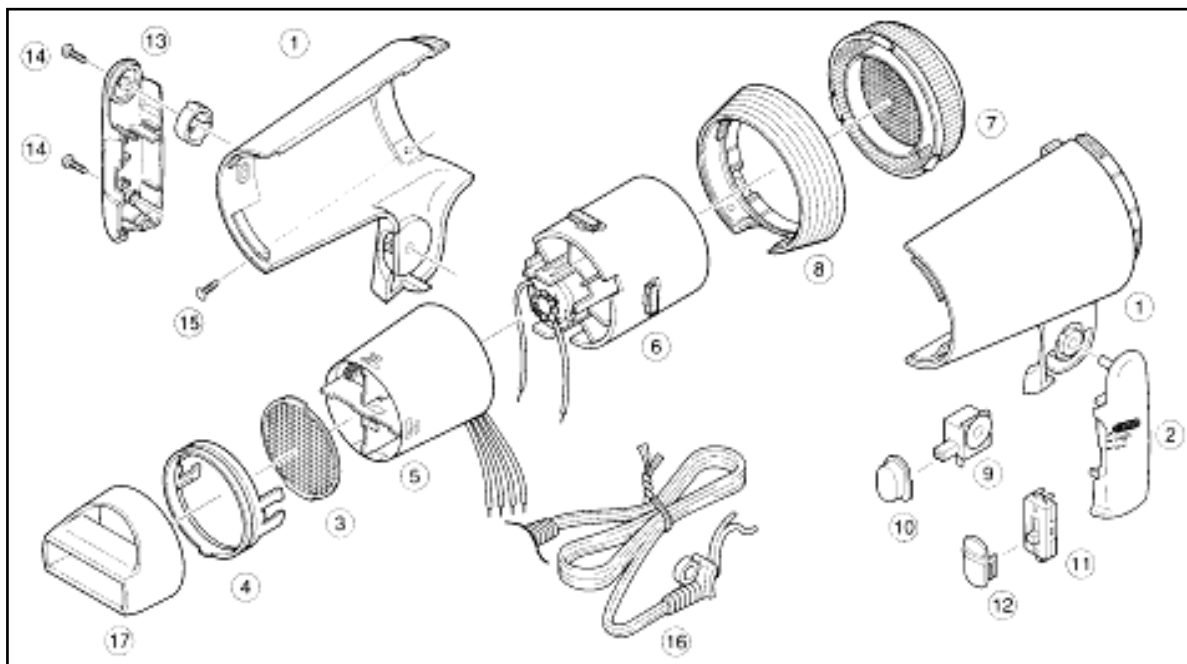
4 TROUBLESHOOTING GUIDE

Refer to WIRING CONNECTION DIAGRAM.



5 EXPLODED VIEW & REPLACEMENT PARTS LIST

5.1 EXPLODED VIEW



REPLACEMENT PARTS PRICE LIST

RMKS: *1= Available individually

Ref. No.	Parts No.	Parts Name & Descriptions	Per Unit	RMKS
1	EH5934HSDL1W	HOUSING AB ASS'Y	1	D/BBLUE TAIWAN
1	EH5934HSL1W	HOUSING AB ASS'Y	1	L/BBLUE TAIWAN
1	EH5934HSDL2W	HOUSING AB ASS'Y	1	D/BBLUE OTHERS
1	EH5934HSL2W	HOUSING AB ASS'Y	1	L/BBLUE OTHERS
1	EH5934HSDL3W	HOUSING AB ASS'Y	1	D/BBLUE S'PORE, HK
1	EH5934HSL3W	HOUSING AB ASS'Y	1	L/BBLUE S'PORE, HK
1	EH5934HSDL7W	HOUSING AB ASS'Y	1	D/BBLUE KOREA
1	EH5934HSL7W	HOUSING AB ASS'Y	1	L/BBLUE KOREA
2	EH5934HDDL1W	HANDLE AB	1	D/BBLUE TAIWAN
2	EH5934HDL1W	HANDLE AB	1	BLUE TAIWAN
2	EH5934HDDL2W	HANDLE AB	1	D/BBLUE OTHERS
2	EH5934HDL2W	HANDLE AB	1	BLUE OTHERS
3	EH5934AOGW	AIR OUTLET GRILL	1	
4	EH5934AORHW	AIR OUTLET RING	1	L/GRAY
5	EH5934HB11W	HEATER BLOCK ASS'Y	1	110V TAIWAN
5	EH5934HB22W	HEATER BLOCK ASS'Y	1	220-240V OTHERS
6	EH5934MBW	MOTOR ASS'Y	1	
7	EH5934AIADLW	AIR INLET ASS'Y	1	D/BBLUE
7	EH5934AIAVW	AIR INLET ASS'Y	1	VIOLET
8	EH5934HSCHW	HOUSING C	1	L/GRAY
9	EH5934PS304W	MAIN SWITCH	1	
10	EH5934MPDLW	MAIN SWITCH PUSH BUTTON	1	D/BBLUE
10	EH5934MPLW	MAIN SWITCH PUSH BUTTON	1	BLUE
11	EH5934SSW	SELECT SWITCH	1	
12	EH5934HLSLW	HIGH/LOW SWITCH PLATE	1	BLUE MAIN BODY BLUE
12	EH5934HLSLVW	HIGH/LOW SWITCH PLATE	1	BLUE MAIN BODY VIOLET
13	EH5931SRW	SWIVEL RING	1	NATURAL
14	EH5934T0312W	TAPPING SCREW	2	3*12 *1
15	EH5934T2660W	TAPPING SCREW	1	2.6*6
16	EH5934PCA2W	POWER CORD ASS'Y	1	A2-PLUG,TAIWAN
16	EH5934PCHC2W	POWER CORD ASS'Y	1	C2-PLUG,OTHERS
16	EH5934PCS3W	POWER CORD ASS'Y	1	S3-PLUG,S'PORE,HK
16	EH5934PCHB2W	POWER CORD ASS'Y	1	B2-PLUG,KOREA
17	EH5934NZDLW	NOZZLE	1	D/BBLUE
17	EH5934NZLW	NOZZLE	1	BLUE
-	EH5934S09W	FILLER FOR PACKAGE	1	
-	EH5934S03W	INSTRUCTION BOOKLET	1	
-	EH5934S01LW	INDIVIDUAL FOR PACKAGE	1	BLUE
-	EH5934S01VW	INDIVIDUAL FOR PACKAGE	1	VIOLET

RMKS : * 1 Individual Available

All parts are supplied from MEW-Thailand throught PLGA