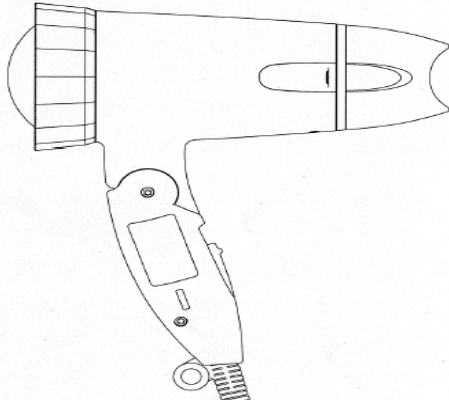


# Service Manual

**Hair Dryer**  
**EH5373-A3**



## SPECIFICATIONS

Power source	AC110V, AC220-240V / 50-60Hz (Separately available)	Power consumption	Function "3".....110V 1200W 220V 1100W 230V 1200W 240V 1300W
Air volume	1.0 m <sup>3</sup> /min(3)		
Air flow temperature	110V.....120 deg C(3) 220 - 240V.....120 deg C(3) (in case of room temperature 30°C)	Function "2".....110V 600W 220V 530W 230V 570W 240V 600W	
Cord length	1.75 m	Function "1".....110V 23W 220V 40W 230V 44W 240V 48W	
Weight	460 g		

### **⚠ WARNING**

This service information is designed for experienced repair technicians only and is not designed for use by the general public. It does not contain warnings or cautions to advise non-technical individuals of potential dangers in attempting to service a product. Products powered by electricity should be serviced or repaired only by experienced professional technicians. Any attempt to service or repair the product or products dealt with in this service information by anyone else could result in serious injury or death.

## CONTENTS

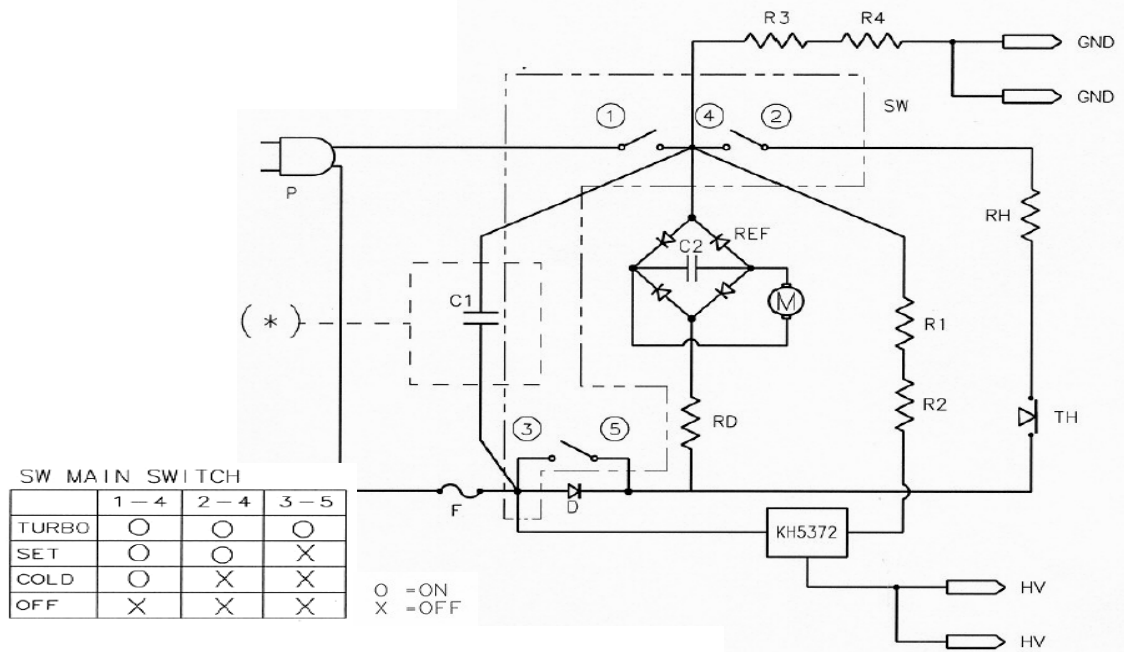
	Page		Page
1 SCHEMATIC DIAGRAM .....	1	4 DISASSEMBLY INSTRUCTION.....	9
2 WIRING CONNECTION DIAGRAM.....	2	5 TROUBLESHOOTING .....	12
3 ASSEMBLY INSTRUCTION.....	4	6 EXPLODED VIEW & REPLACEMENT PARTS LIST.....	13

# Panasonic

©2005 Matsushita Electric Works, Ltd.  
All rights reserved. Unauthorized copying  
and distribution is a violation of law.

# 1 SCHEMATIC DIAGRAM

## 1.1) Rated Voltage 220-240V (Korea, Saudi Arabia, Hong Kong, Singapore Other)



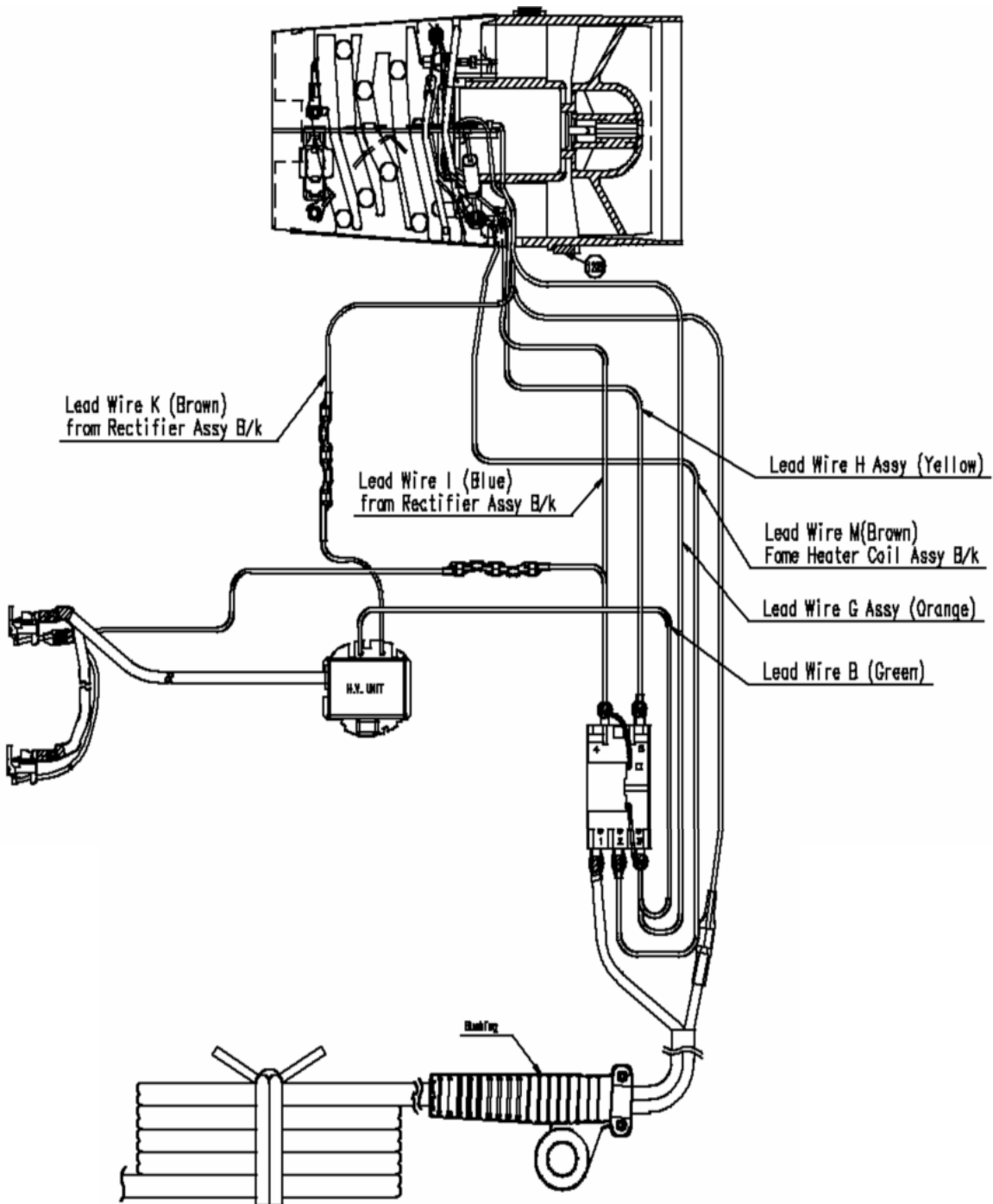
Remark; (\*)= Optional for the country that require EMC such as Korea, Saudi Arabia, etc)

## 1.2) Component list

		220-240V (Korea, Saudi)	220-240V (Hongkong, Singapore Other)
C1	CAPACITOR	0.22 $\mu$ F, 275V	NOT USE
C2	CAPACITOR (FOR MOTOR)	0.1 $\mu$ F, 50VDC	
D	DIODE	600V, 5A	
F	TEMPERATURE FUSE	142 degC, 250V, 12A	
M	MOTOR	MM1872	
SW	MAIN SWITCH	250V / 7.5A	
TH	THERMO SWITCH	120+/-5 degC	
RH	HEATER COIL	41.0+/-0.7 $\Omega$	
RD	VOLTAGE DROPPING RESISTOR	360+/-10 $\Omega$	
REF	DIODE BRIDGE	400V, 1A	
R1, R2	RESISTOR	13 kOhm, 1 W	
R3, R4	RESISTOR	1 MOhm, 1/2W	

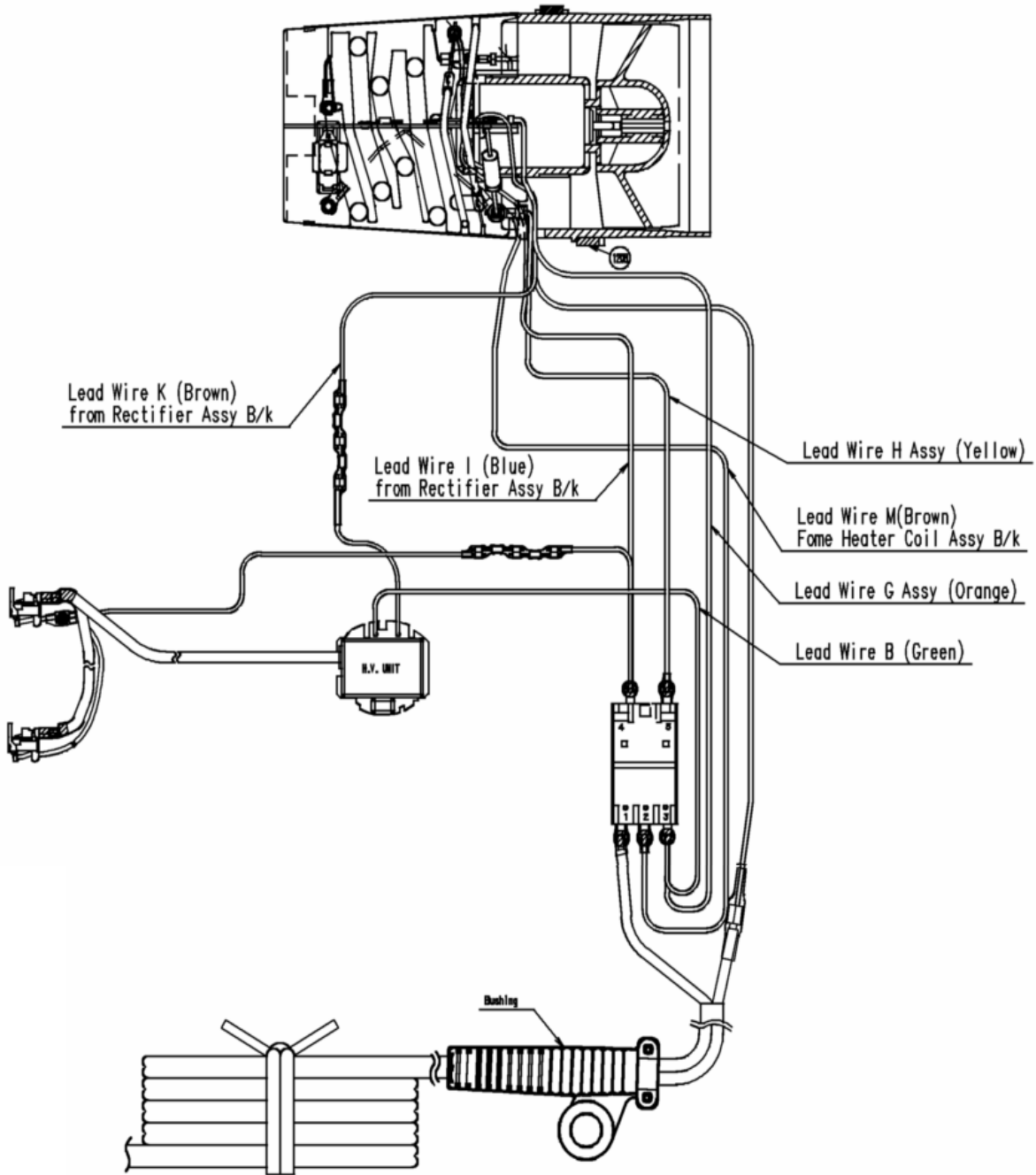
## 2 WIRING CONNECTION DIAGRAM

(1) 220-240 V (For Korea, Saudi Arabia)



## 2 WIRING CONNECTION DIAGRAM

(2) 220-240 V (For Other Country)



### 3 ASSEMBLY INSTRUCTIONS

(\*) Caution for soldering lead wire on Main switch  
Location and orientation of lead wire  
must be as WIRING CONNECTION DIAGRAM

(1) Connection rectifier to motor block as Figure 2

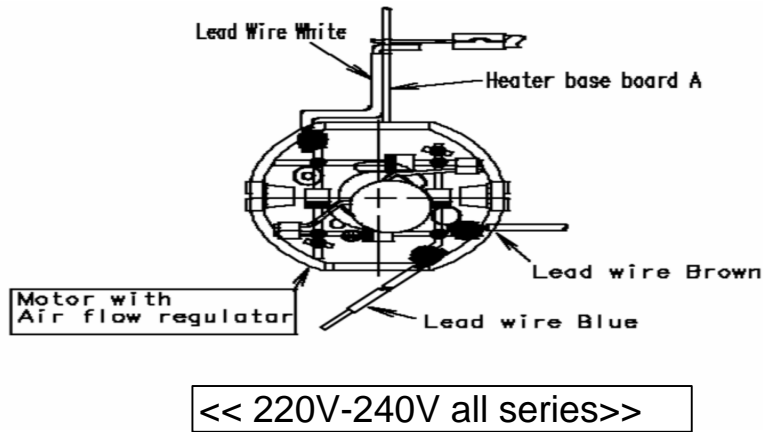
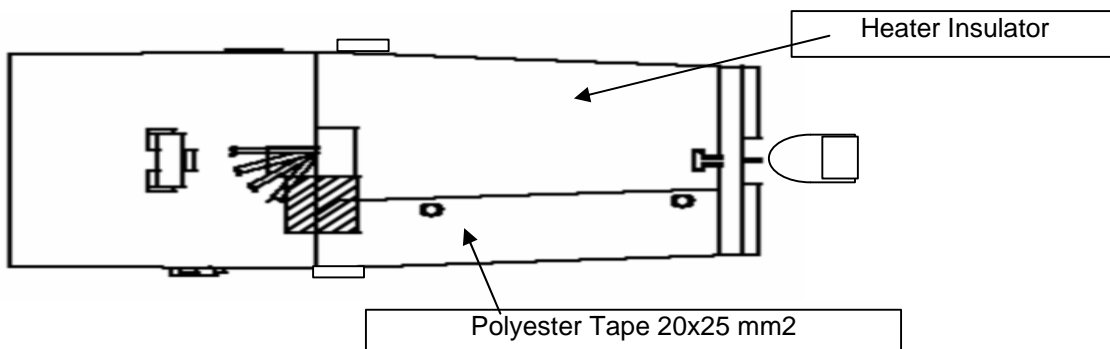


Figure 2 Connection rectifier to motor block

2) Install all lead wire through Heater Insulator, Then install Heater Insulator as indicated position as Figure 3 . Now you will get Air Flow Assy Block

Figure 3 Assembly heater compartment with motor block

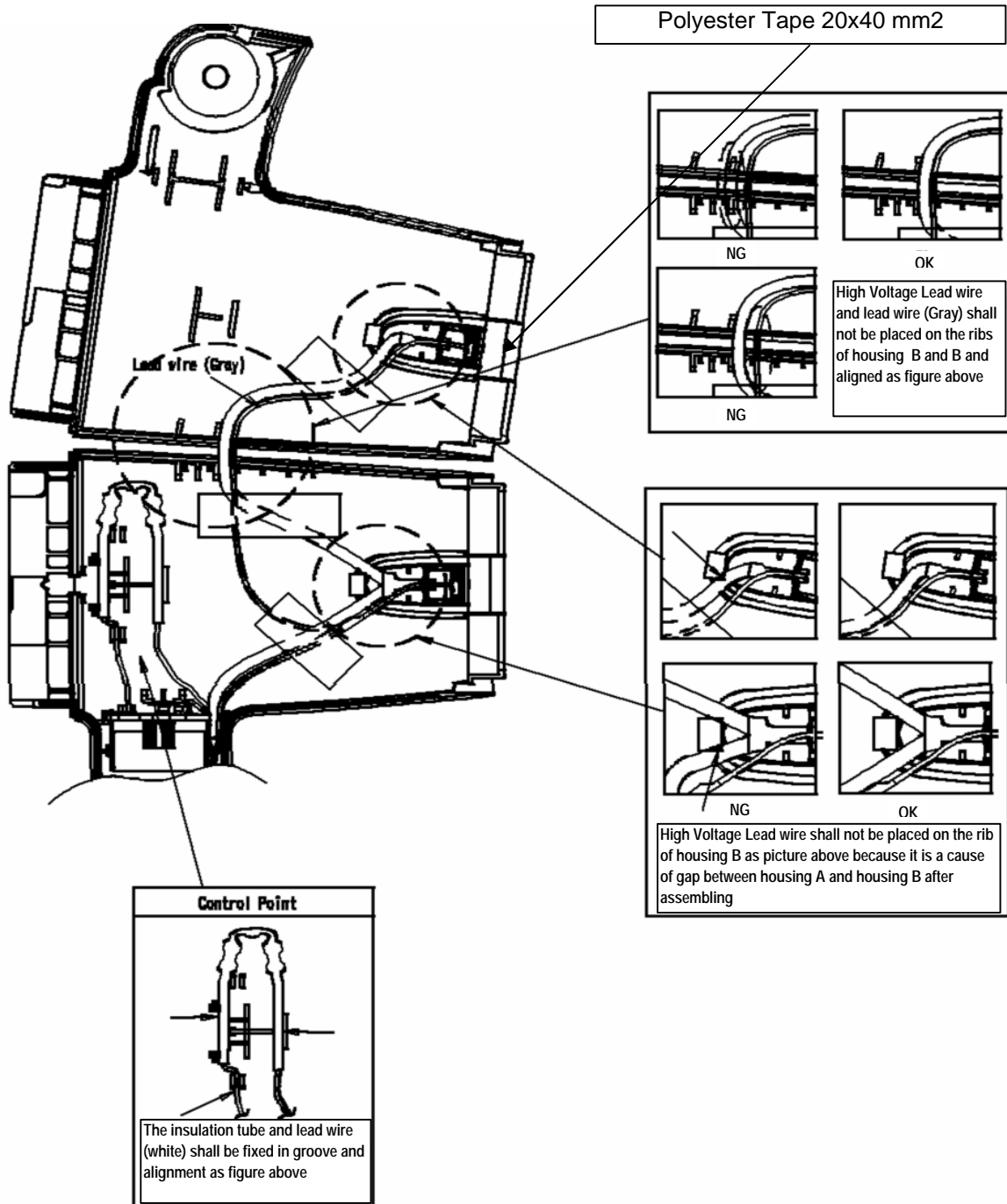


### 3 ASSEMBLY INSTRUCTIONS

(3) Install Air Flow Assy Block with Housing A and B, Lead wire alignment shall be installed as figure 4

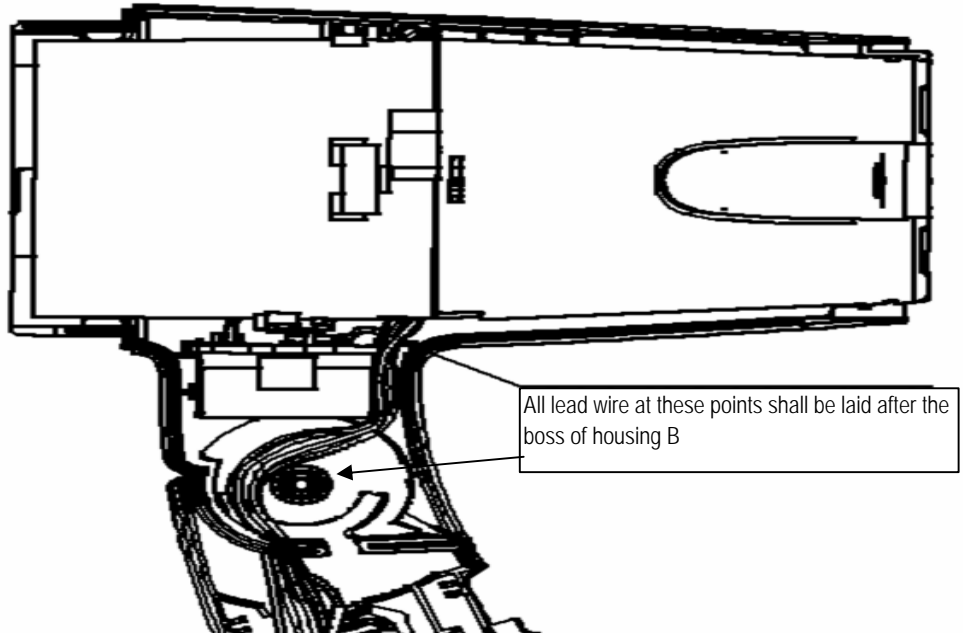
< 220-240V for all series>

Figure 4 (2) High voltage lead wire alignment on housing A and B (220V-240V for all series)



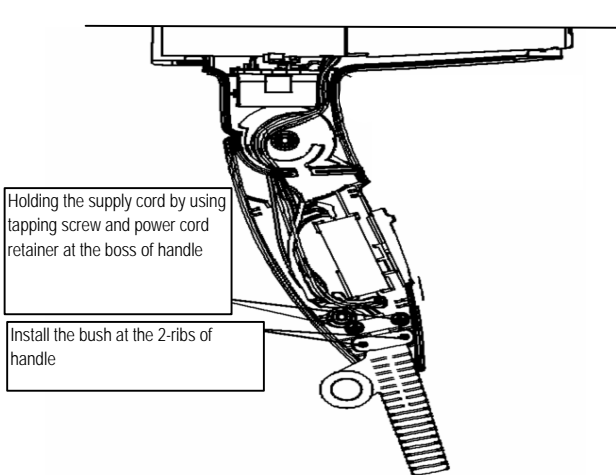
### 3 ASSEMBLY INSTRUCTIONS

(4) Place "Air Flow Regulator on Housing" then align the all lead wire as figure below

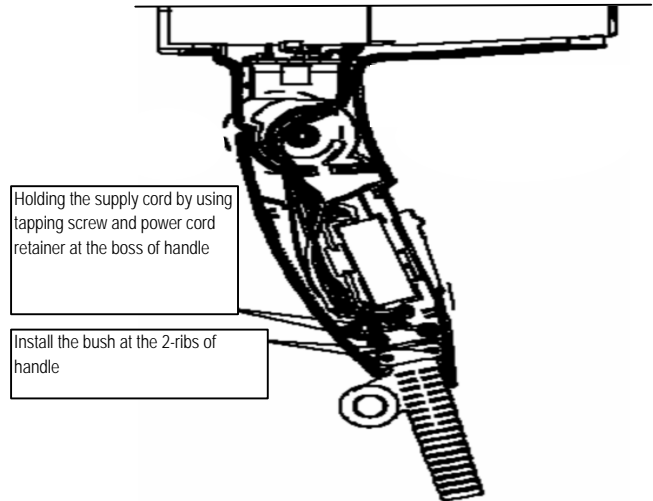


(5) Assemble housing A with housing B then assembly handle A/B that the lead wire alignment shall be laid as figure 5

Figure 5 Lead wire alignment at handle A/B



<<220-240V Other country>>

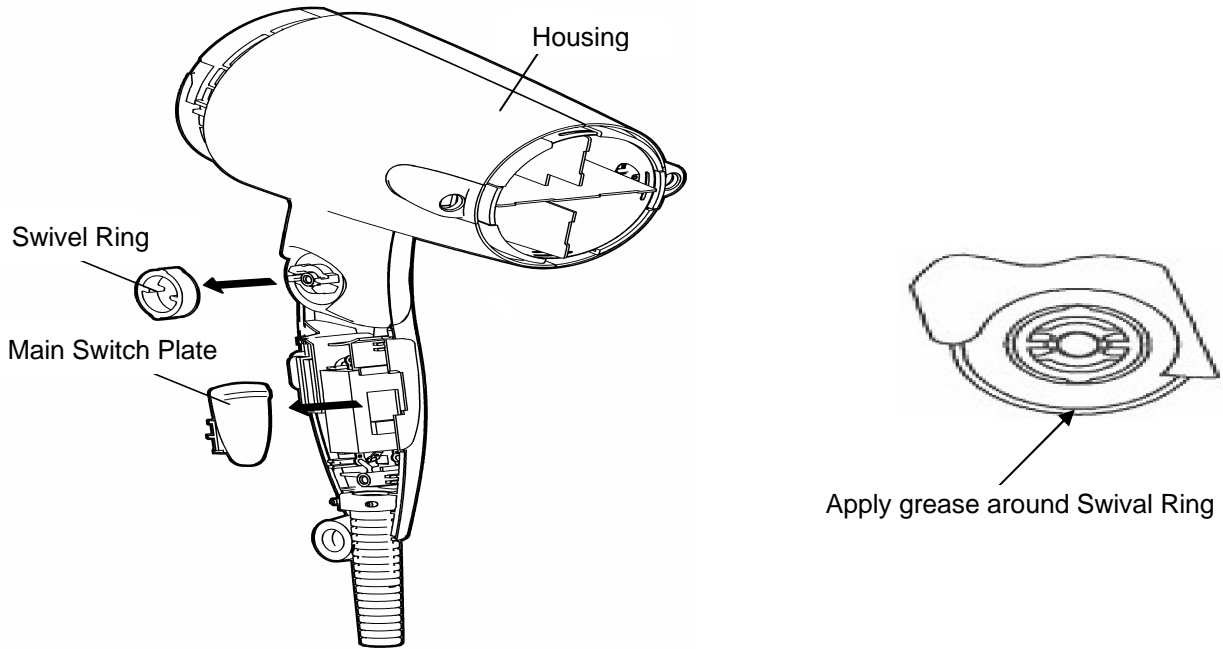


<<220-240V Korea, Saudi Arabia>>

### 3 ASSEMBLY INSTRUCTIONS

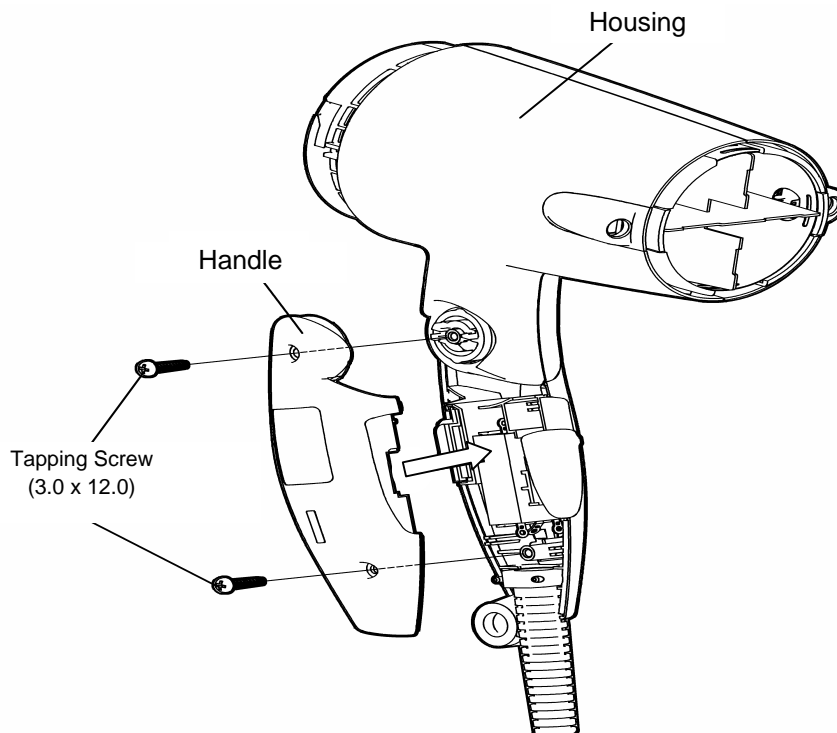
(6) Assembly Swivel Ring, See Figure 6. Then apply grease around Swivel Ring.

Figure 6 Assembly Swival Ring



(7) Assembly the handle by Torx Screw (3.0x12.0) as Figure 7

Figure 7 Assembly the handle

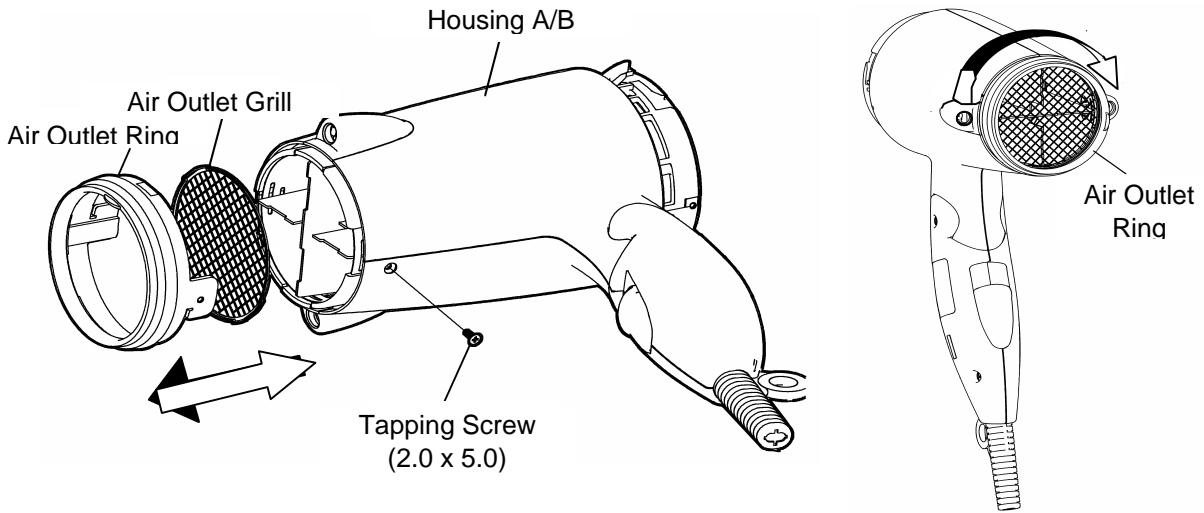




### 3 ASSEMBLY INSTRUCTIONS

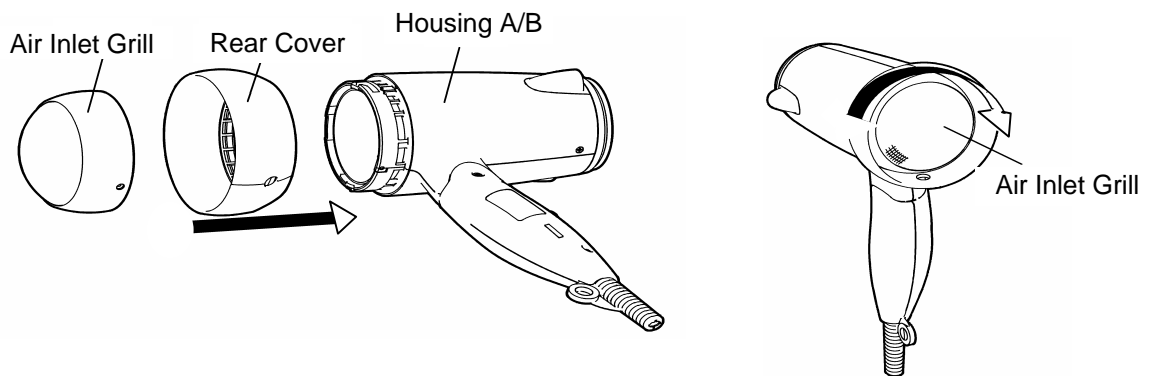
(8) Assembly Air Outlet Ring, Air Outlet Grill with housing A/B, See the direction and assembly method As Figure 8

Figure 8 Assembly Air Outlet Ring, Air Outlet Grill with housugn A/B



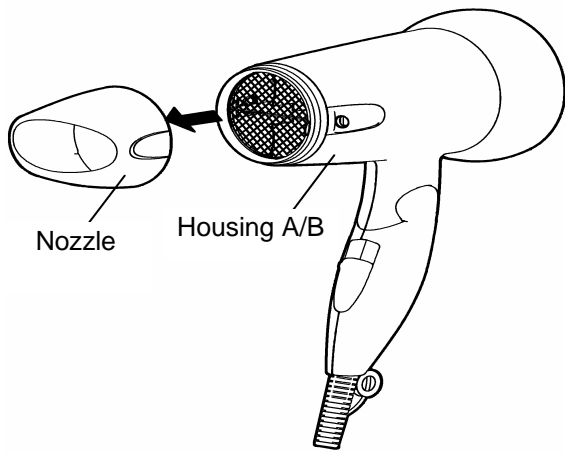
(9) Assembly Air Inlet Ring, Air Inlet Grill with housing A/B, See the direction and assembly method As Figure 9

Figure 9 Assembly Air Inlet Ring, Air Inlet Grill with housing A/B

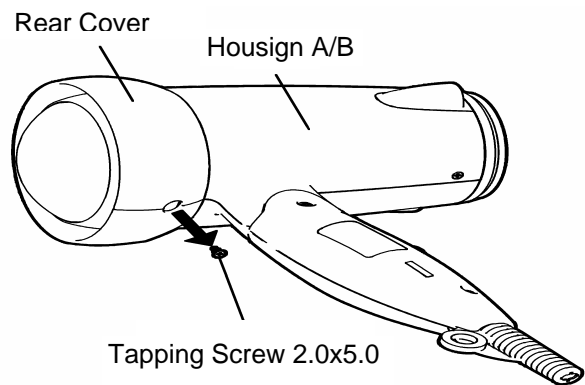


## 4 DISASSEMBLY INSTRUCTIONS

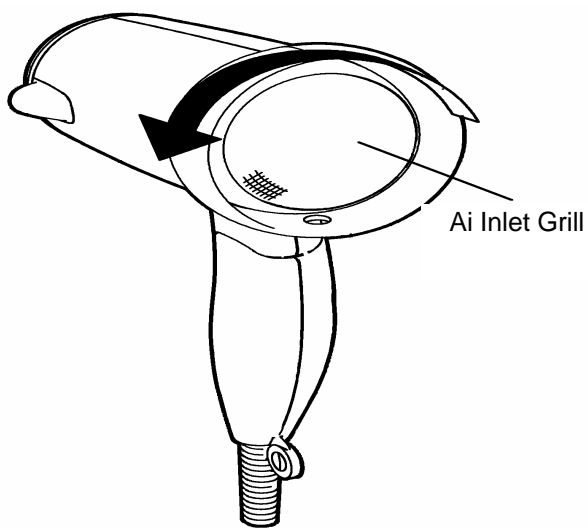
(1). Take the Nozzle off as direction below.



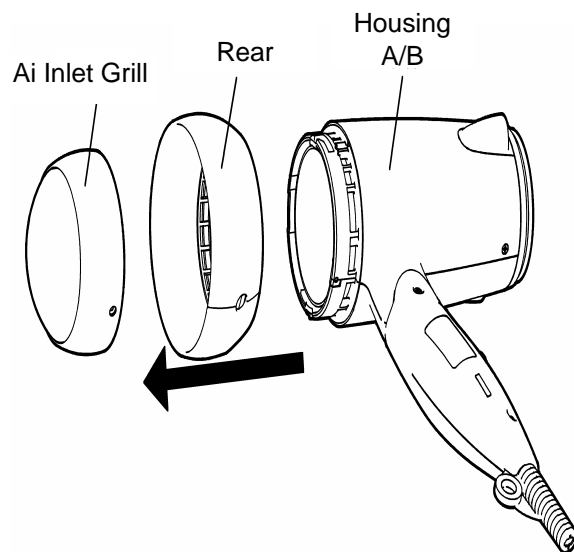
(2). Take the tapping screw off for rear cover as picture below



(3). Twist the rear cover as picture below

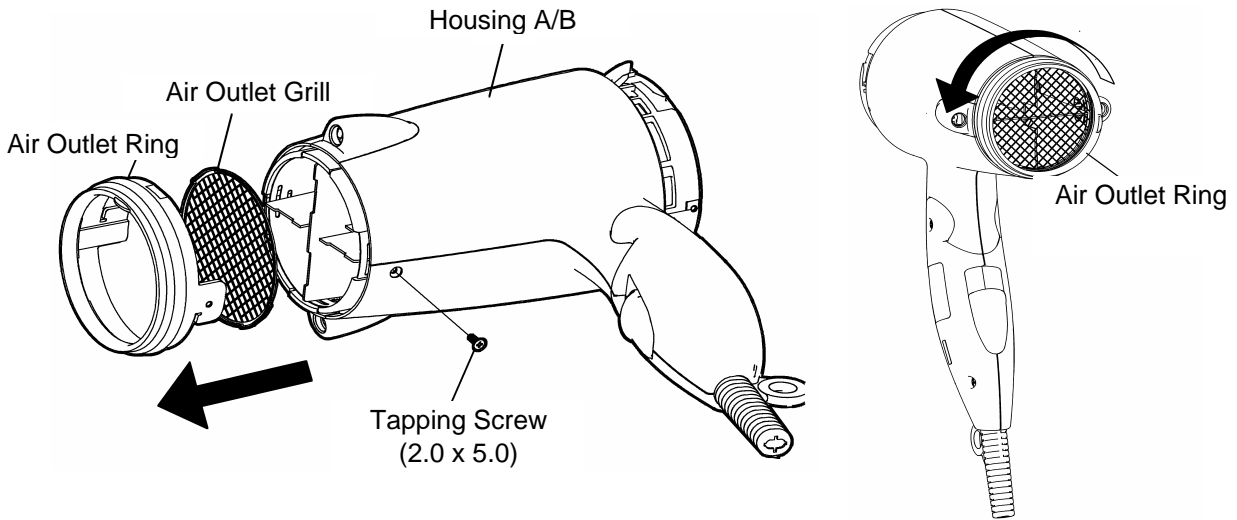


(4) Re-assembly as picture below

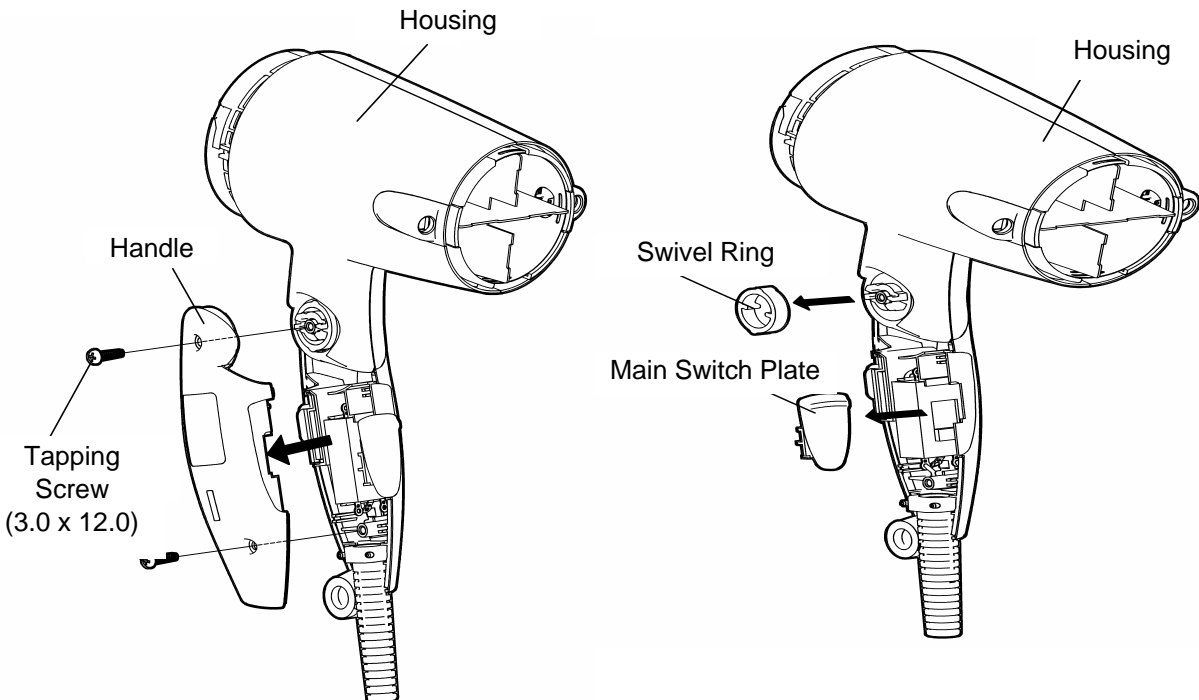


## 4 ASSEMBLY INSTRUCTIONS

- (5). Take the tapping screw off then twist the air outlet ring as the direction below, after that you can detach the parts in front of the hair dryer as the direction below.

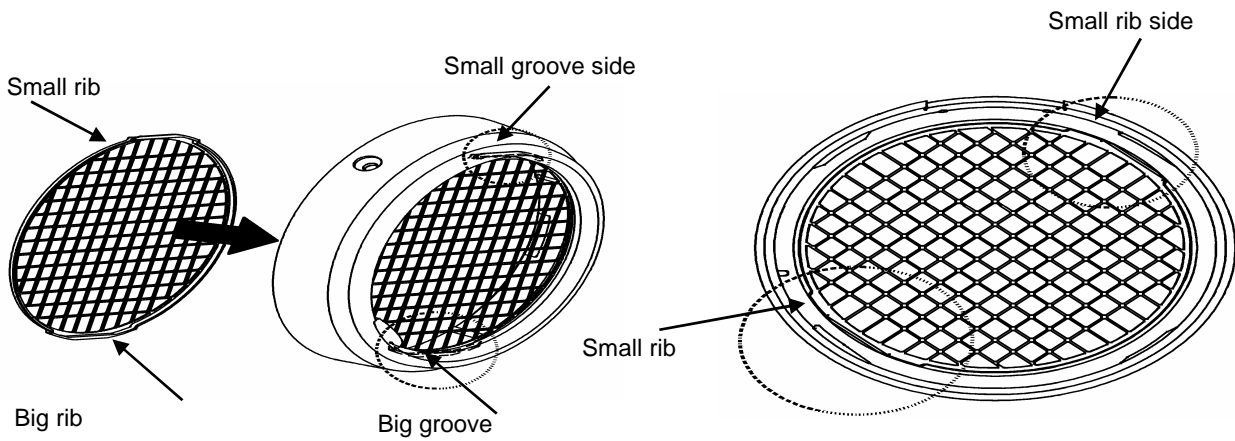


- (6). Opening the handle by taking the torx screw off, then you can take the main switch plate off and the swivel ring off as the picture below.

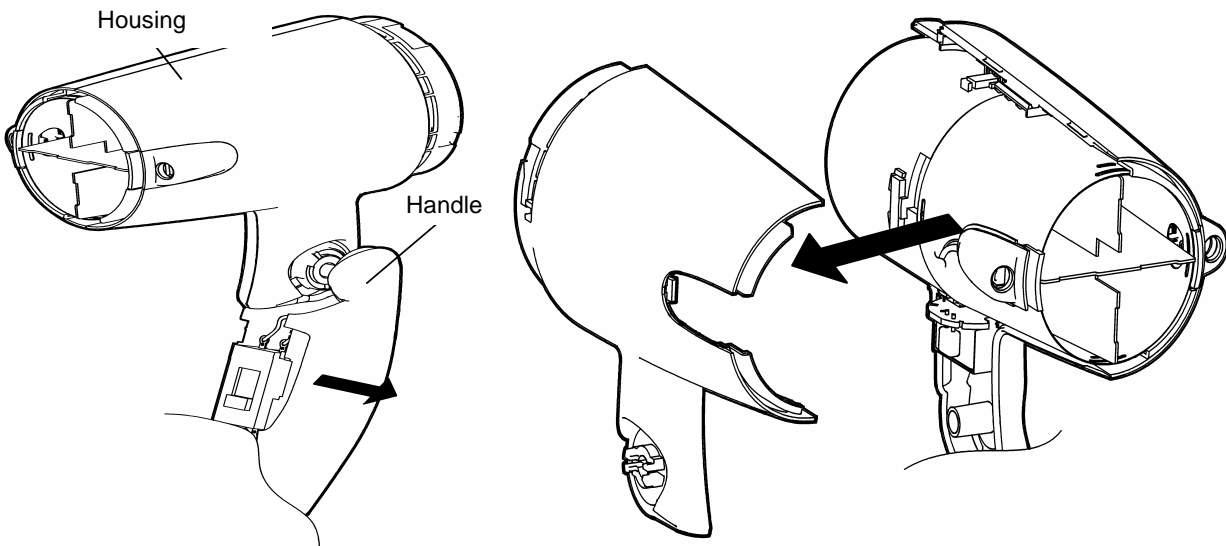


## 4 ASSEMBLY INSTRUCTIONS

- (7). Assembly method between Air Outlet Ring and Air Outlet Grill, You can see the big rib side and small rib side of Air Outlet Grill, the small groove side and big groove side of Air Outlet Ring, You can combine the two part within the two groove,

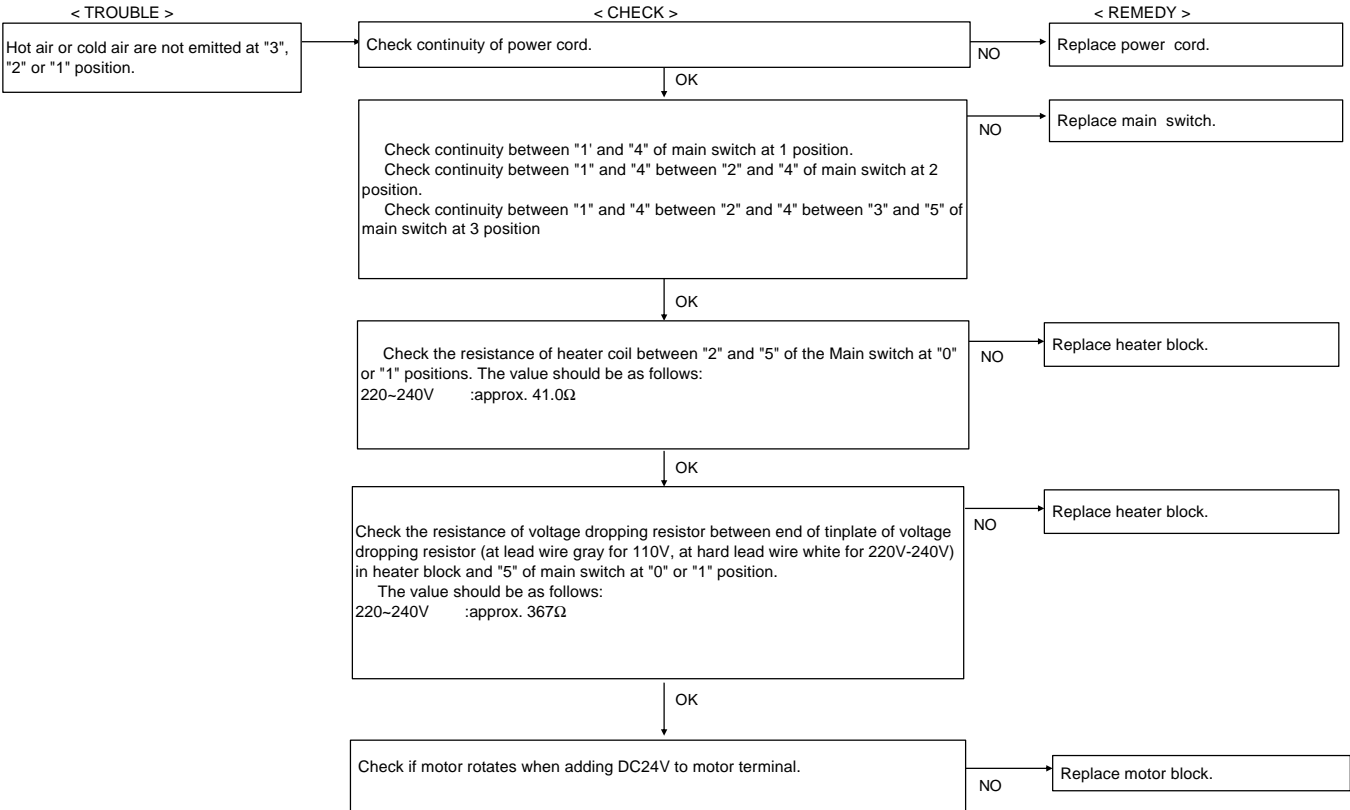


- (8). Take the rest handle part of, then you can open the housing for accessible to Air Flow Assembly block.

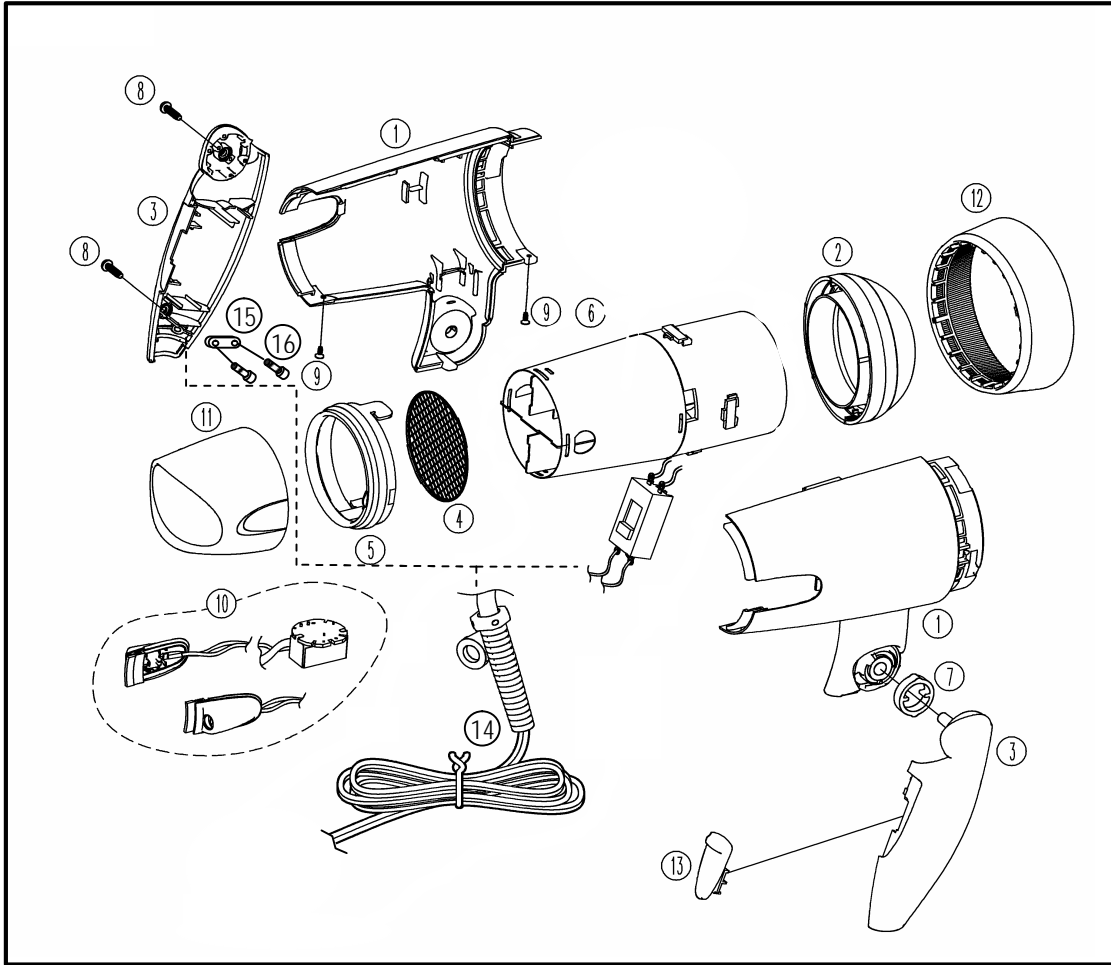


## 5 TROUBLESHOOTING GUIDE

Refer to WIRING CONNECTION DIAGRAM.



## 6 EXPLODED VIEW



## 7 REPLACEMENT PARTS LIST

Ref.no.	Parts No.	Parts Names & Description	Qt'y/Unit	Remarks
1	EH5373HSLW	HOUSING AB	1	BLUE
1	EH5373HSL8W	HOUSING AB	1	BLUE S'PORE , HK, MALAYSIA
2	EH5373AIASW	AIR INLET ASS'Y	1	SILVER
3	EH5373HDL2W	HANDLE AB	1	LIGHT BLUE OTHERS, 220-240V
3	EH5373HDL7W	HANDLE AB	1	LIGHT BLUE KOREA
4	EH5373AOGW	AIR OUTLET GRILL	1	
5	EH5373AORW	AIR OUTLET RING	1	
6	EH5373HB2W	HEATER BLOCK	1	220V-240V
6	EH5373HB7W	HEATER BLOCK	1	KOREA, SAUDI A.
7	EH5373SRTW	SWIVEL RING	1	
8	EH53730312W	TAPPING SCREW	2	*1
9	EH53732005W	TAPPING SCREW	2	*1
10	EH5373DEAW	DISCHARGE ELECTRODE ASS'Y	1	
11	EH5373NZLW	NOZZLE	1	CLEAR BLUE
12	EH5373RCLW	REAR COVER	1	CLEAR BLUE
13	EH5373MSPLW	MAIN SWITCH PLATE	1	BLUE
14	EH5373PCB2W	POWER CORD ASS'Y	1	B2 PLUG OTHERS
14	EH5373PCS3W	POWER CORD ASS'Y	1	S3 PLUG S'PORE, HK, MALAYSIA, SAUDI A.
15	EH5373PCRBW	POWER CORD RETAINER	1	
16	EH53733080W	TAPPING SCREW	2	*1
--	EH5373S01LW	INDIVIDUAL PACKAGE	1	
-	EH5373S03W	INSTRUCITON BOOKLET	1	
-	EH5373S09W	FILLER FOR PACKAGE	1	

RMKS:\*1 Individual Available

All parts are supplied from MEW-Thailand through PLGA