

Service Manual

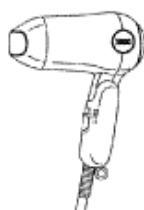
[TOP](#) [NEXT](#)

ORDER NO.PCD0312A89C3

Service Manual

Hair Dryer

- EH5282-A3



SPECIFICATIONS

Power Source	AC110V, 220-240V/ 50-60Hz	Air Volume	0.80m ³ /min (3)
	(Separately available)	Air Flow Temperature	110V, 105°C (3)
Power consumption	Function '3'.....110V, 1000W		220-240V, 105°C (3)
	220V, 930W		(In case of room temperature 30°C)
	230V, 1000W	Cord Length	1.75m
	240V, 1100W	Weight	400g
	Function '2'.....110V, 500W		
	220V, 450W		
	230V, 500W		
	240V, 550W		

© 2003 Matsushita Electric Works (Thailand), Ltd. All rights reserved. Unauthorized copying and distribution is a violation of law.

⚠ WARNING

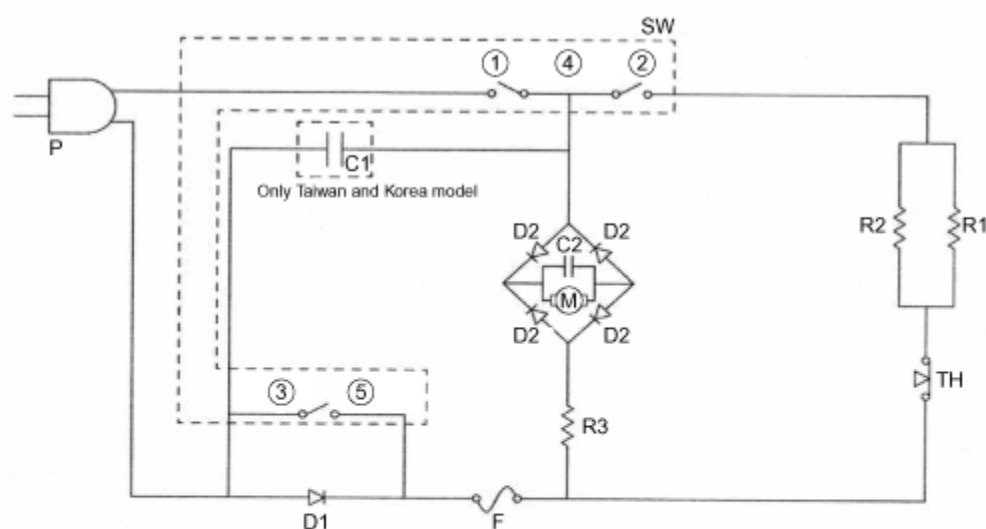
This service information is designed for experienced repair technicians only and is not designed for use by the general public. It does not contain warnings or cautions to advise non-technical individuals of potential dangers in attempting to service a product. Products powered by electricity should be serviced or repaired only by experienced professional technicians. Any attempt to service or repair the product or products dealt with in this service information by anyone else could result in serious injury or death.

Panasonic

[TOP](#) [NEXT](#)

1 SCHEMATIC DIAGRAM

[TOP](#) [PREVIOUS](#) [NEXT](#)



SW Main switch

Function	① - ④	② - ④	③ - ⑤
0	×	×	×
1	○	×	×
2	○	○	×
3	○	○	○

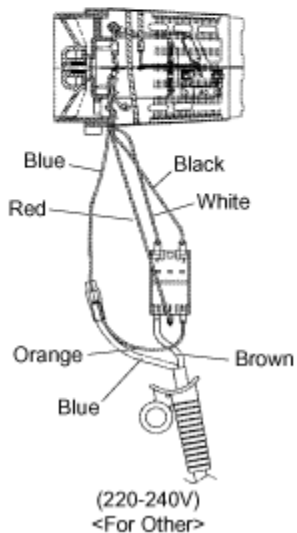
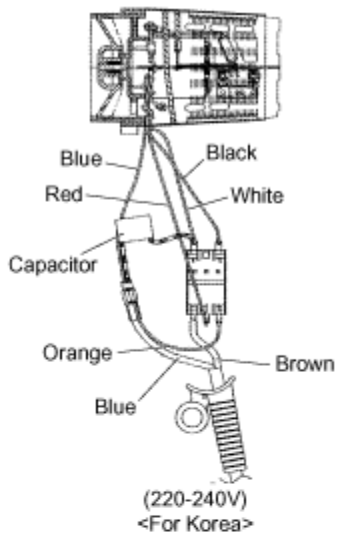
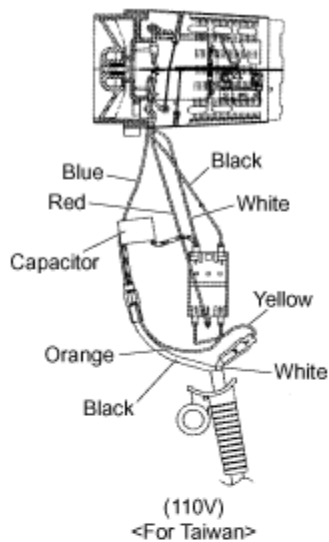
○=ON
×=OFF

		110V (TAIWAN)	220-240V (KOREA)	220-240V (OTHERS)
C1	CAPACITOR	0.1 μ F, 275V		NOT USE
C2	CAPACITOR (FOR MOTOR)	0.1 μ F, DC50 V		
D1	DIODE	600V, 5A		
D2 (×4)	DIODE (BRIDGE)	400V, 2A		
F	TEMPERATURE FUSE	147°C, 250V, 12A	136°C, 250V, 12A	
M	MOTOR	DC 15V		
SW1	MAIN SWITCH	AC 125V/13A; 250V/6.5A		
TH	TEHRMO SWITCH	110 \pm 5°C; AC125V/16A; 85 \pm 5°C; AC125V/16A; AC250V/10A		
		AC250V/10A		
R3	VOLTAGE DROP. RESISTOR	111.2 \pm 3 Ω	254.2 \pm 7 Ω	
R2		-	64.8 \pm 1.9 Ω	
R1	HEATER COIL	-	NOT USE	
R1/R2		13.0 \pm 0.5 Ω	NOT USE	

[TOP](#) [PREVIOUS](#) [NEXT](#)

2 WIRING CONNECTION DIAGRAM

[TOP](#) [PREVIOUS](#) [NEXT](#)



[TOP](#) [PREVIOUS](#) [NEXT](#)

3 ASSEMBLY INSTRUCTIONS

[TOP](#) [PREVIOUS](#) [NEXT](#)

CAUTION:

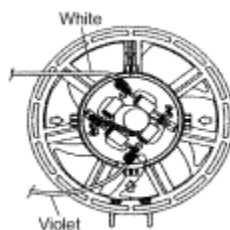
When soldering lead wires on the main switch, location and orientation of lead wires must be as shown in [Figure 1](#) .

Figure 1



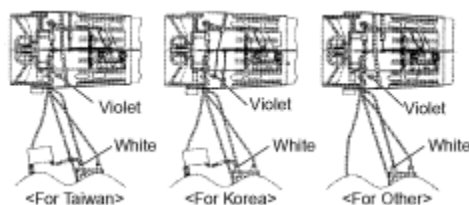
1. Assemble the heater into slots of the motor block assembly as shown in [Figure 2](#) .

Figure 2



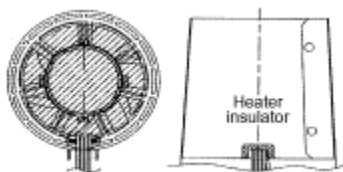
2. Solder white and violet lead wires into the heater as shown in [Figure 3](#) .

Figure 3



3. Insert the red, black, blue, white lead wires between the guide post of air flow assembly, and align heater insulator slot and lead wires as shown in [Figure 4](#) .

Figure 4



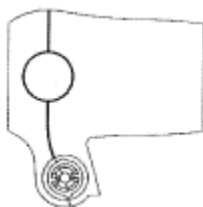
4. Set air outlet grill and outlet ring to heater block by aligning rib of air outlet ring and slot of front housing as shown in [Figure 5](#) .

Figure 5



5. Put heater block into front housing by aligning heater base board and air outlet ring.
6. Assemble back housing and front housing, then install swivel ring into the housing as shown in [Figure 6](#) .

Figure 6



7. Install handle B into the housing.

NOTE:

Make sure of aligning all lead wires at right hand side of screw bush as shown in [Figure 7](#) .

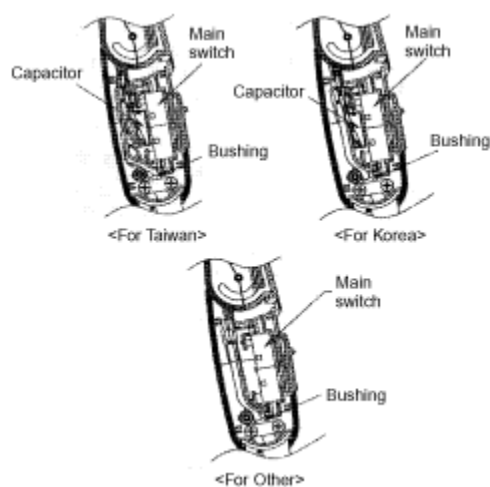
8. Install main switch plate, main switch, lead wires into housing B as shown in Figure 7.
9. Set power cord and bushing, then fasten 2 screws to power cord retainer as shown in Figure 7.

10. Install capacitor into handle B as shown in Figure 7.

NOTE:

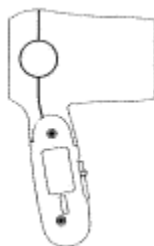
For Taiwan and Korea model only.

Figure 7



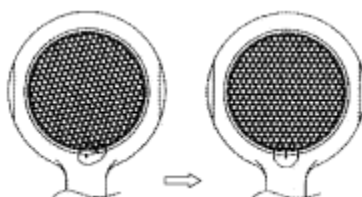
11. Assemble handle A and handle B, then fasten 2 torque screws as shown in [Figure 8](#) .

Figure 8



12. Assemble air inlet grill into back housing by aligning mark of air inlet grill mesh and mark of back housing as shown in [Figure 9](#) .

Figure 9



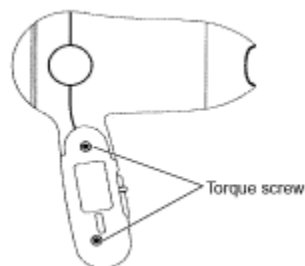
[TOP](#) [PREVIOUS](#) [NEXT](#)

4 DISASSEMBLY INSTRUCTIONS

[TOP](#) [PREVIOUS](#) [NEXT](#)

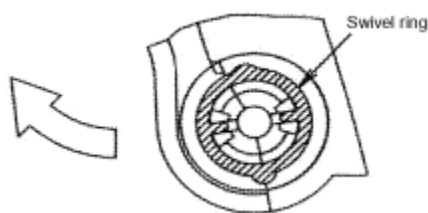
1. Remove 2 torque screws from handle using torque head driver as shown in [Figure 10](#) .

Figure 10



2. Remove swivel ring, then remove hook of back housing from front housing. (See [Figure 11](#))

Figure 11



3. Remove 2 tapping screws from power cord retainer.
4. Remove the motor block, heater block, and main switch.

[TOP](#) [PREVIOUS](#) [NEXT](#)

5 TROUBLESHOOTING GUIDE

[TOP](#) [PREVIOUS](#) [NEXT](#)

NOTE: Refer to WIRING CONNECTION DIAGRAM.

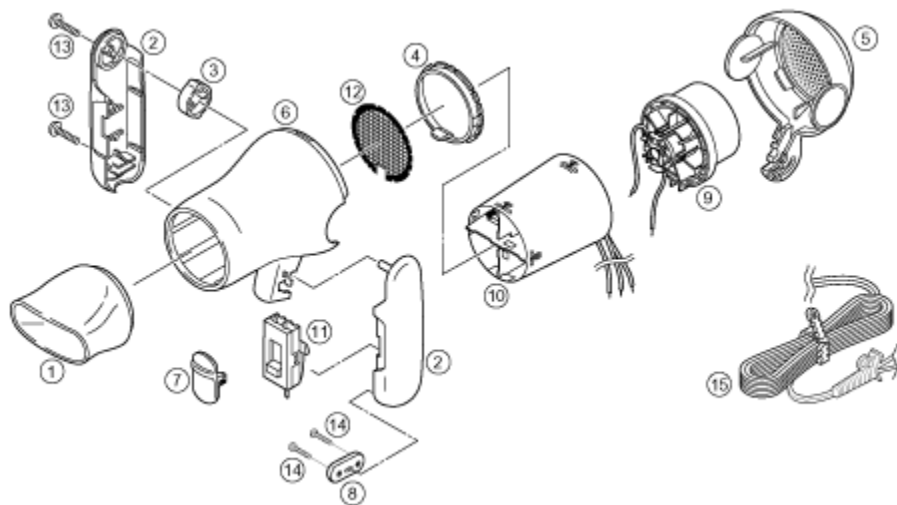
< TROUBLE >	< CHECK >	< REMEDY >
Hot air or cool air is not emitted at "1", "2" or "3" position.	Check the continuity of power cord.	NO Replace the power cord. →
	↓ OK	
	Check the continuity between "1" and "4" at 1 position of main switch. Check the continuity between "1" and "4", between "2" and "4" at 2 position of main switch. Check the continuity between "1" and "4", between "2" and "4", between "3" and "5" at the 3 position of main switch.	NO Replace the main switch. →
	↓ OK	
	Check the resistance of heater coil between "2" and "5" at 0 or 1 position of main switch. The values should be as follows: 220–240V :approx. 66.0Ω 110V :approx. 13.3Ω Check the resistance of voltage dropping resistor between violet lead wire in heater block and "5" at 0 or 1 position of main switch. The values should be as follows: 220–240V :approx. 256.0Ω 110V :approx. 113.0Ω	NO Replace the heater block. →
	↓ OK	
	Check if the motor rotates when adding DC 15V to motor terminal.	NO Replace the motor. →
	↓ OK	

Check the continuity of diode(D).

NO Replace the heater block.

→

[TOP](#) [PREVIOUS](#) [NEXT](#)



7 REPLACEMENT PARTS LIST

[TOP PREVIOUS](#)

NOTES: All parts are supplied from MEWT through PLGA.

Remarks: *1 = Available individually

Ref.No.	Part No.	Part Name & Descriptions	Remarks	Per Unit
1	EH5282NZLW	NOZZLE (BLUE)		1
1	EH5282NZPW	NOZZLE (PINK)		1
2	EH5282HDL1W	HANDLE AB (BLUE)	TAIWAN	1
2	EH5282HDP1W	HANDLE AB (PINK)	TAIWAN	1
2	EH5282HDL2W	HANDLE AB (BLUE)	OTHERS	1
2	EH5282HDP2W	HANDLE AB (PINK)	OTHERS	1
2	EH5282HDL7W	HANDLE AB (BLUE)	KOREA	1
2	EH5287HDH7W	HANDLE AB (PINK)	KOREA	1
3	EH5282SRW	SWIVEL RING (NATURAL)		1
4	EH5282AORHW	AIR OUTLET RING (LIGHT GRAY)		1
5	EH5282BHSLW	BACK HOUSING (BLUE)		1
5	EH5282BHSPW	BACK HOUSING (PINK)		1
6	EH5282FHSLW	FRONT HOUSING (BLUE)		1
6	EH5282FHSPW	FRONT HOUSING (PINK)		1
7	EH5282MSPLW	MAIN SWITCH PLATE (BLUE)		1
7	EH5282MSPPW	MAIN SWITCH PLATE (PINK)		1
8	EH5282PCRBW	POWER CORD RETAINER (BLACK)		1
9	EH5282MBW	MOTOR ASS'Y BLOCK		1
10	EH5282HB1W	HEATER ASS'Y BLOCK	110V	1
10	EH5282HB2W	HEATER ASS'Y BLOCK	220-240V	1
11	EH5282MSW	MAIN SWITCH		1
12	EH5282AOGW	AIR OUTLET GRILL		1
13	EH52823012W	TAPPING SCREW	*1	2
14	EH52823080W	TAPPING SCREW	*1	2
15	EH5282PCA2W	POWER CORD ASS'Y	A2-PLUG TAIWAN	1
15	EH5282PCS3W	POWER CORD ASS'Y	S3-PLUG, MALY,S'PORE,HK	1
15	EH5282PCC2W	POWER CORD ASS'Y	C2-PLUG, MNE, OTHER	1

15	EH5282PCB2W	POWER CORD ASS'Y	B2-PLUG, KOREA	1
-	EH5282135LW	INDIVIDUAL PACKAGE	(BLUE) TAIWAN	1
-	EH5282135PW	INDIVIDUAL PACKAGE	(PINK) TAIWAN	1
-	EH5282685LW	INDIVIDUAL PACKAGE	(BLUE) OTHERS	1
-	EH5282685PW	INDIVIDUAL PACKAGE	(PINK) OTHERS	1
-	EH528213503W	INSTRUCTION BOOKLET	TAIWAN	1
-	EH528268503W	INSTRUCTION BOOKLET	OTHERS	1
-	EH5282S09W	FILLER FOR PACKAGE		1

[TOP](#) [PREVIOUS](#)